

## Cover Letter

### Difference between WMI2-W167-M1 & WMI2-W167-M2

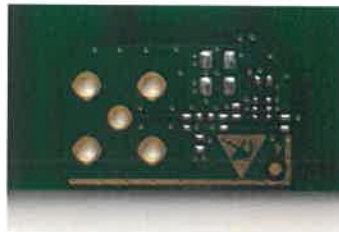
Basically the WMI2-W167-M1 is very much the same to WMI2-W167-M2 except the cell-phone-coupling-function.

The coupling function is the capability of passive transmission of the cell-phone-signal via the compenser (device to connect high frequency units in the vehicle) to the cellular car antenna.

The difference in the hardware on the couple board is documented with enclosed pictures and the difference on the main board is a resistor value, which corresponds to the diagnose flags for activating of the coupling antenna function. Both PCBs (main-PCB/couple-PCB) for both modifications are identical.



WMI2-W167-M1



WMI2-W167-M2

Application software remains the same for both WMI2-W167-M1 & WMI2-W167-M2

peiker acustic GmbH  
Max-Planck-Str. 28- 32  
61381 Friedrichsdorf  
Germany



i.V. Gerald Müller  
Product Line R&D Director

i.A. Uwe Hänig  
Technical Project Management



.....



.....