

Annex 3: EUT Internal Photographs to
TEST REPORT
 No.: 17-1-0290001T06

According to:
FCC Regulations
 Part 15.225

IC-Regulations
 RSS-Gen, Issue 4
 RSS-210, Issue 9 (Sub-Chapter B.6)

for

Peiker acoustic GmbH
 WMI2-W167-M1
 2609-090-403-51

FCC-ID: QWY-WMI2W167
 IC: 6588A-WMI2W167
 PMN: Wireless Mobile Interface
 HVIN: WMI2-W167-M1







Laboratory Accreditation and Listings			
 Deutsche Akkreditierungsstelle D-PL-12047-01-01	 FEDERAL COMMUNICATIONS COMMISSION USA MRA US-EU 0003	 Industry Canada Reg. No.: 3462D-1 Reg. No.: 3462D-2 Reg. No.: 3462D-3	 Voluntary Controls for Electromagnetic Emissions Reg. No.: R-4552 C-20009, T-20006, G-20013
 WiFi ALLIANCE AUTHORIZED RF LABORATORY	 ctia Authorized TM Test Lab Lab Code: 20011130-00		
accredited according to DIN EN ISO/IEC 17025			
<p align="center"> CETECOM GmbH Laboratory Radio Communications & Electromagnetic Compatibility Im Teelbruch 116 • 45219 Essen • Germany Registered in Essen, Germany, Reg. No.: HRB Essen 8984 Tel.: + 49 (0) 20 54 / 95 19-954 • Fax: + 49 (0) 20 54 / 95 19-964 E-mail: info@cetecom.com • Internet: www.cetecom.com </p>			

Table of contents

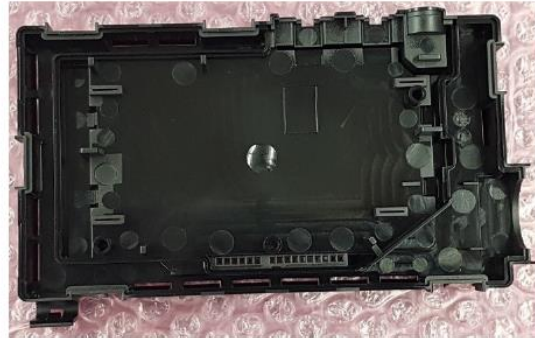
1. INTERNAL PHOTOGRAPHS OF EUT:.....	3
--------------------------------------	---

1. Internal photographs of EUT:

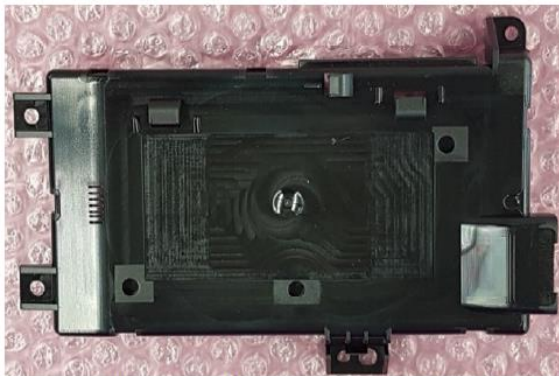
1.1. EUT Photographs



Top Housing, View from outside on the part.



Top Housing, view inside the Part.



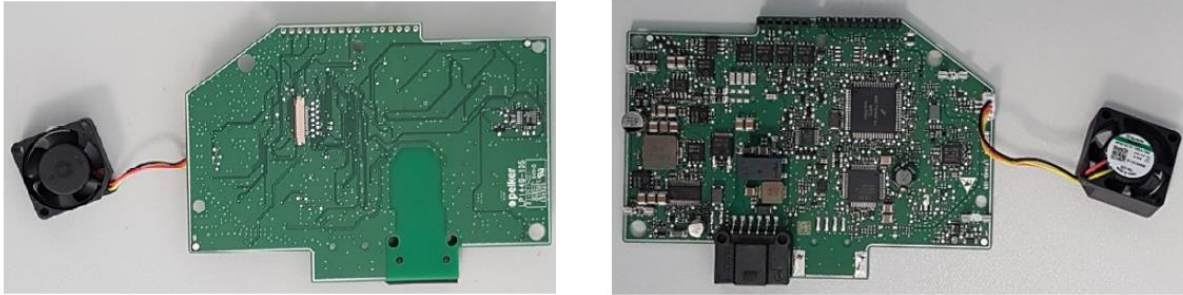
Bottom Housing, View from outside on the part.



Bottom Housing, view inside the Part.



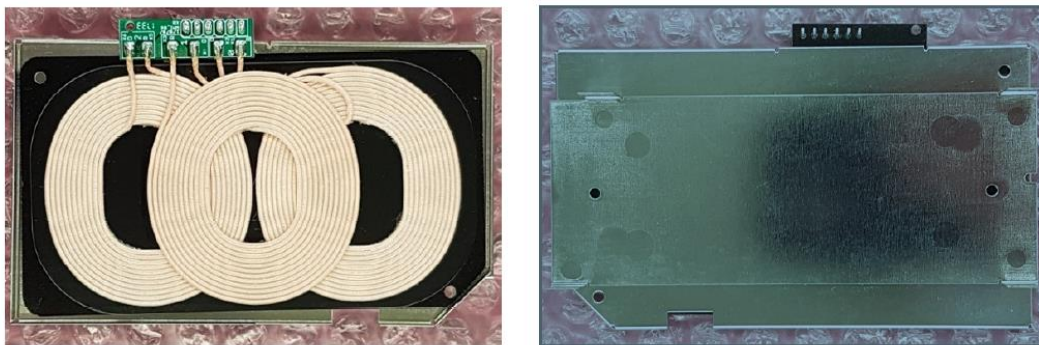
Main-Board with JTAG-Connector and Fan



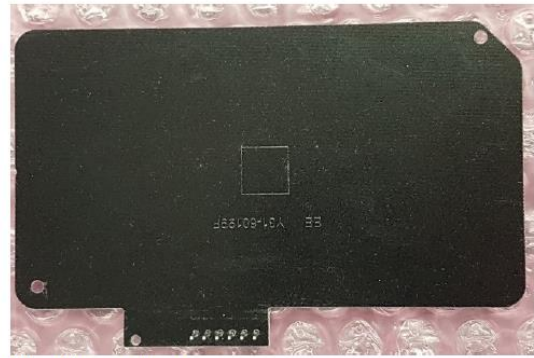
Main-Board, bottom and top view with connected Fan.



Fan, stand alone, top / bottom view.



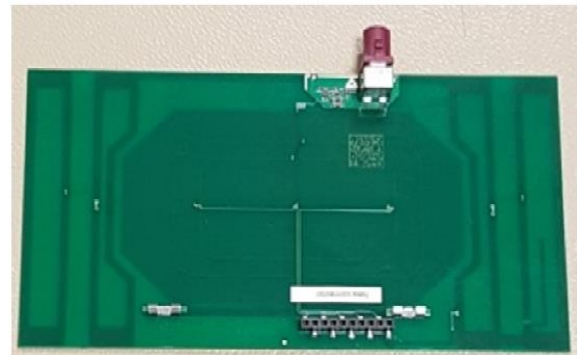
Charging coil element with connector, ferrite plate and metal shield, view from top and bottom side.



Charging coil module with ferrite plate, top and bottom view.



Metal shield, top and bottom view.



Antenna-PCB (NFC-Antenna and GSM-Coupling-Antenna), top and bottom view.