

Annex 2: External photographs to  
**TEST REPORT**  
 No.: 15-1-0007501-02a/b/c/d

According to:  
**FCC Regulations**  
 Part 22, Part 24, Part 27







**IC-Regulations**  
 RSS-132 Issue 3, RSS-133 Issue 6,  
 RSS-139 Issue 3, RSS-Gen Issue 4

for

peiker acoustic GmbH & Co. KG

**GSM/W-CDMA/LTE Module**  
**V1140-101-1**

**FCC-ID:** QWY-V1140-101-1  
**IC:** 6588A-V11401011  
**PMN:** V1140-101-1  
**HVIN:** V1140-101-1

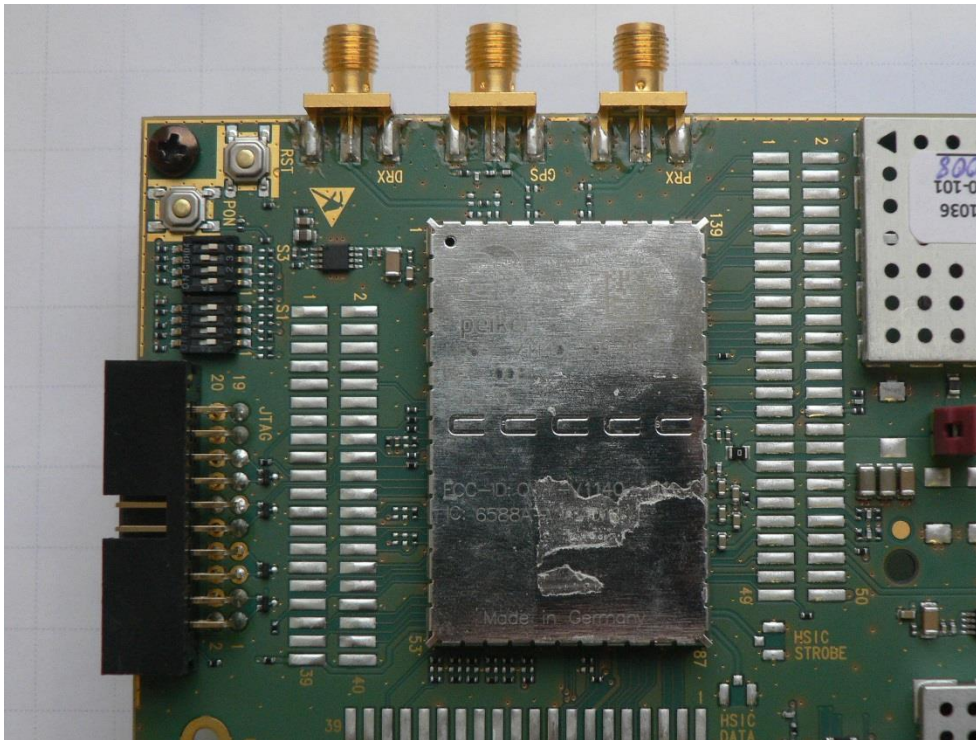
Laboratory Accreditation and Listings			
 Deutsche Akkreditierungsstelle D-PL-12047-01-01	 FEDERAL COMMUNICATIONS COMMISSION USA MRA US-EU 0003	 Industry Canada Reg. No.: 3462D-1 Reg. No.: 3462D-2 Reg. No.: 3462D-3	 Voluntary Controls for Electromagnetic Emissions Reg. No.: R-2666 C-2914, T-1967, G-301
 <b>WiFi</b> ALLIANCE AUTHORIZED RF LABORATORY	 <b>CTIA Authorized Test Lab</b> LAB CODE 20011130-00		
accredited according to DIN EN ISO/IEC 17025			
<p align="center"> <b>CETECOM GmbH</b>            Laboratory Radio Communications &amp; Electromagnetic Compatibility            Im Teelbruch 116 • 45219 Essen • Germany            Registered in Essen, Germany, Reg. No.: HRB Essen 8984            Tel.: + 49 (0) 20 54 / 95 19-954 • Fax: + 49 (0) 20 54 / 95 19-964            E-mail: info@cetecom.com • Internet: www.cetecom.com         </p>			

## Table of contents

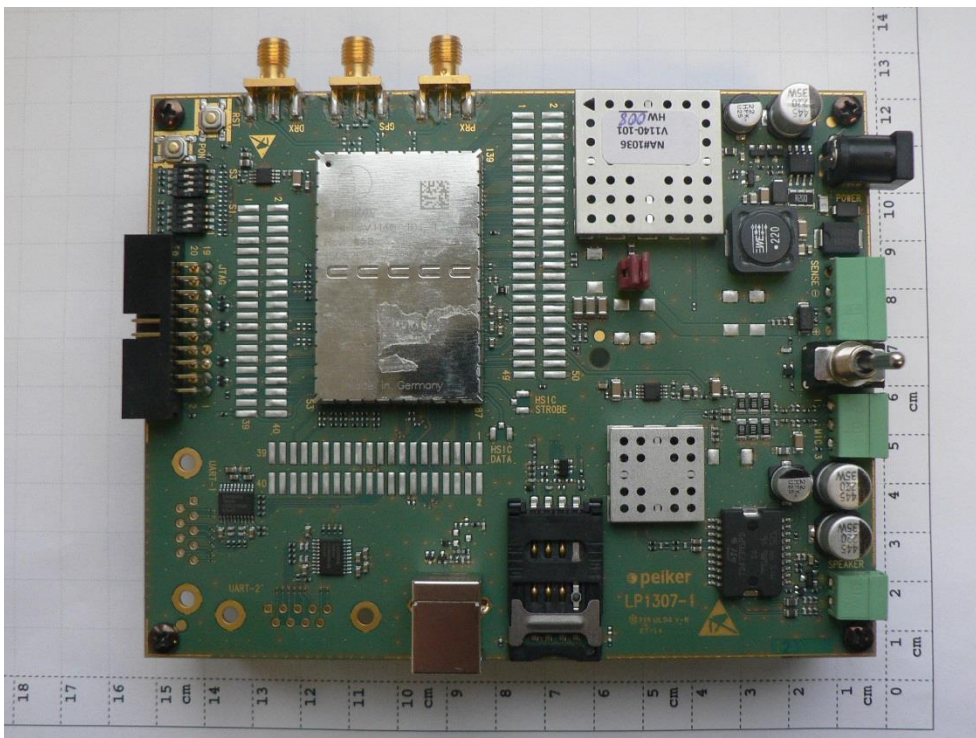
1. EXTERNAL PHOTOGRAPHS.....	3
------------------------------	---

# 1. External Photographs

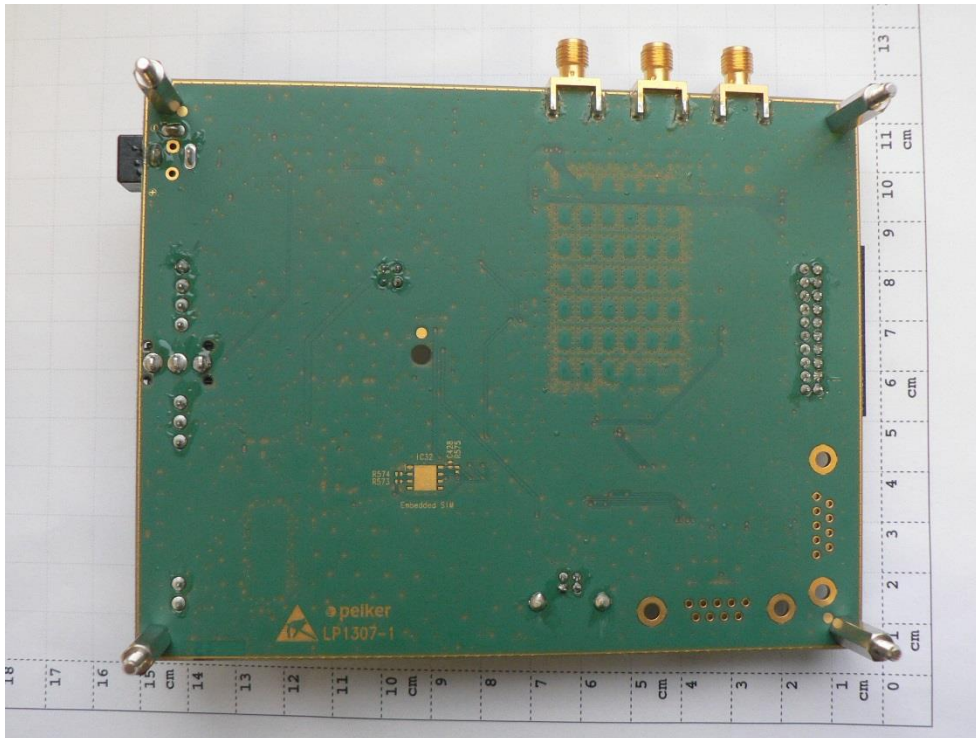
## 1.1. EUT photographs



Photograph 1: EUT1 (close view)



Photograph 2: EUT1 on AE1 (front view)



Photograph 3: EUT1 on AE1 (rear view)



Photograph 4: EUT2 (overview)



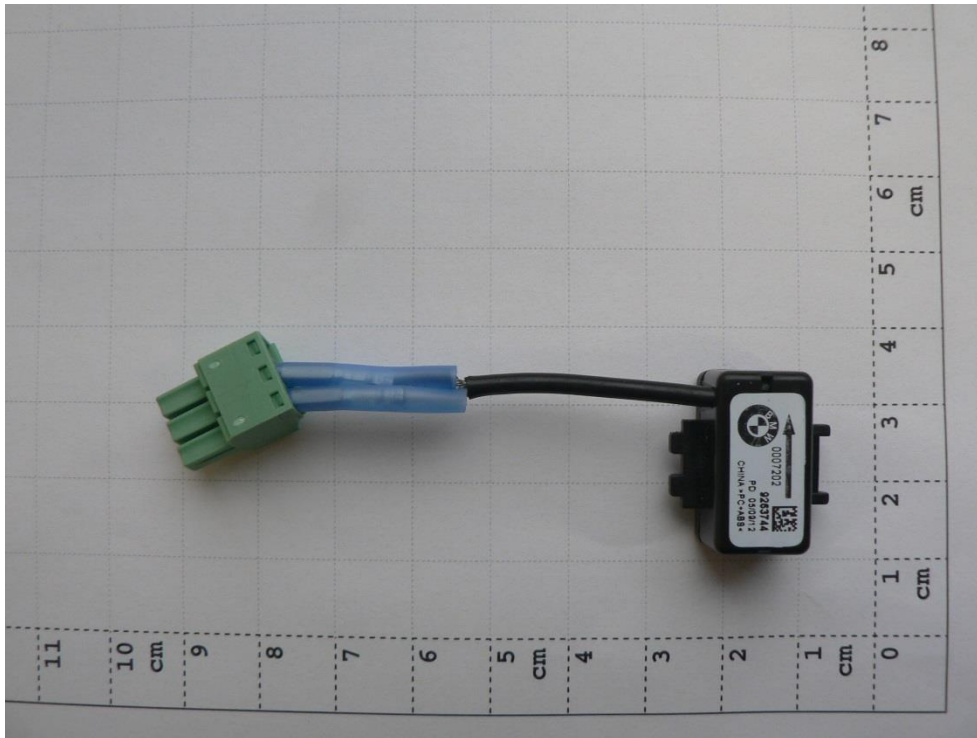


**Photograph 5: EUT2 view 1(cover removed)**



**Photograph 6: EUT2 view 2 (cover removed)**

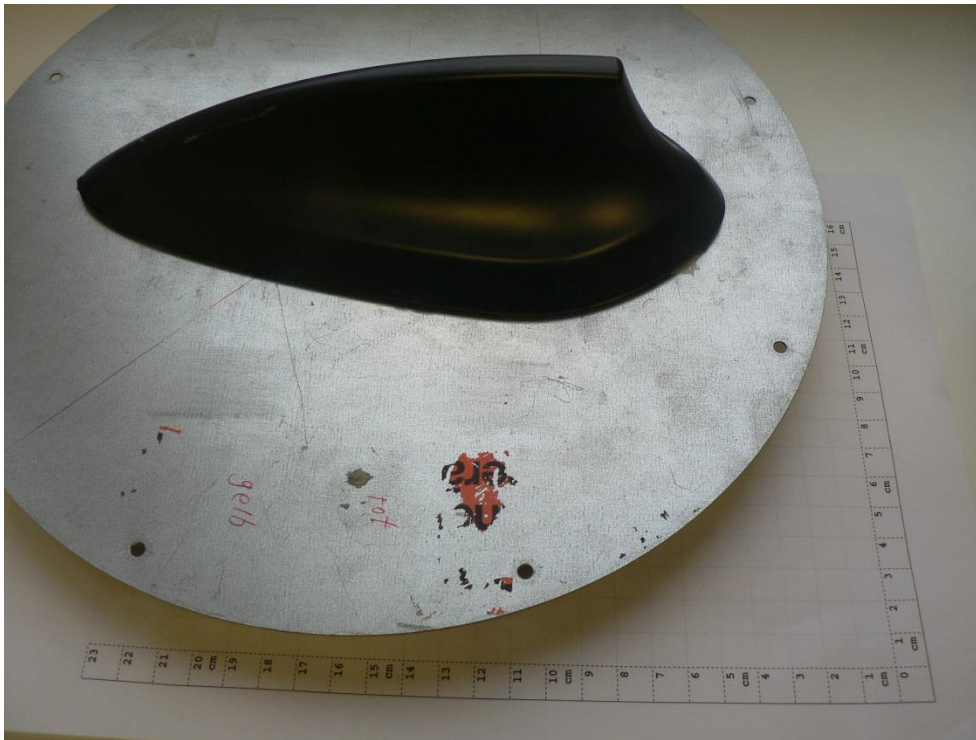
## 1.2. AE's photographs



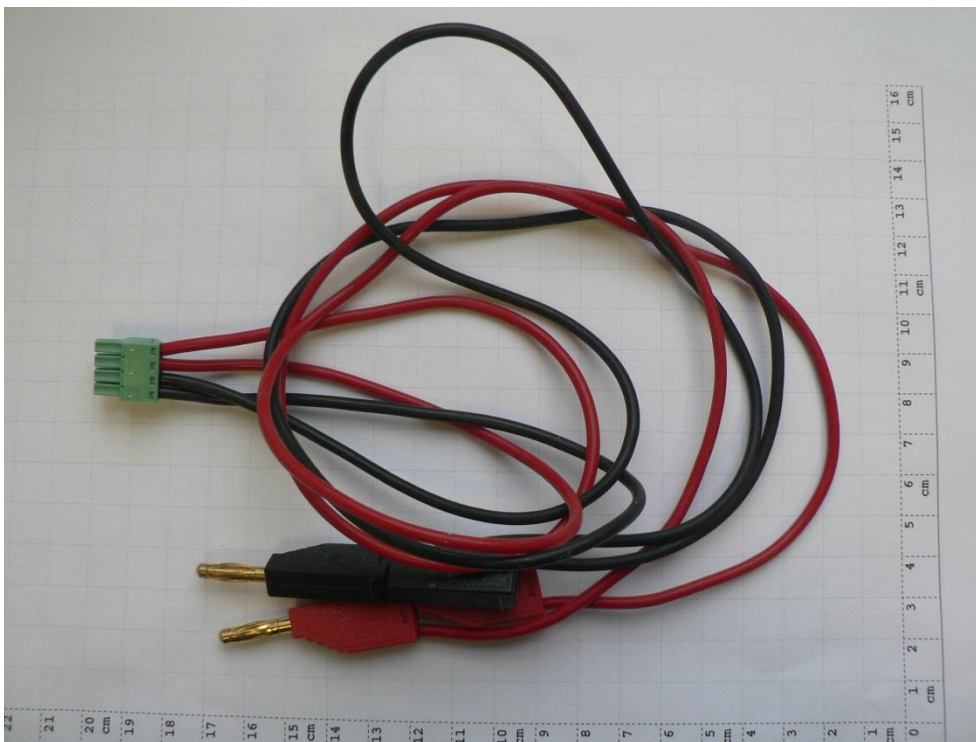
Photograph 7: Mikrophone



Photograph 8: AE 3 - Loudspeaker



**Photograph 9: AE 4 Ground Plane**



**Photograph 10: AE 5 - DC power cables**