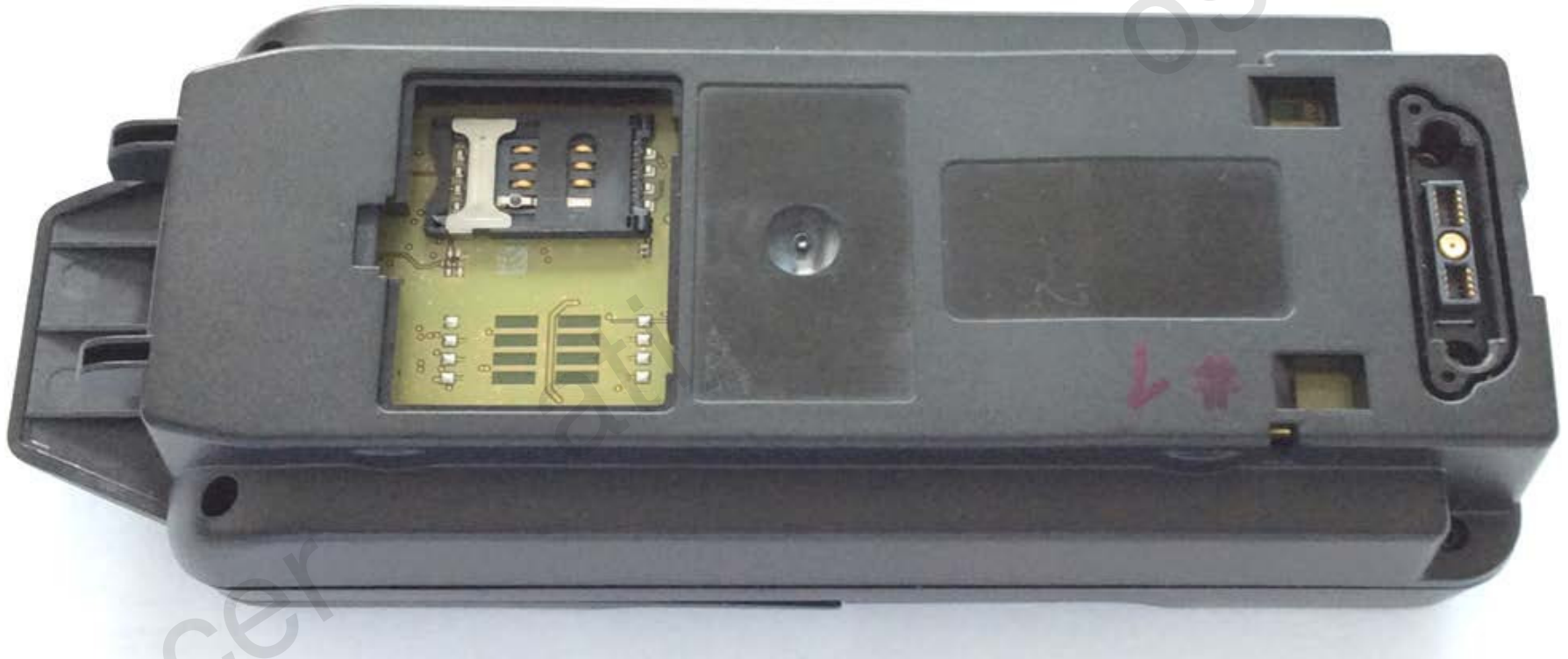


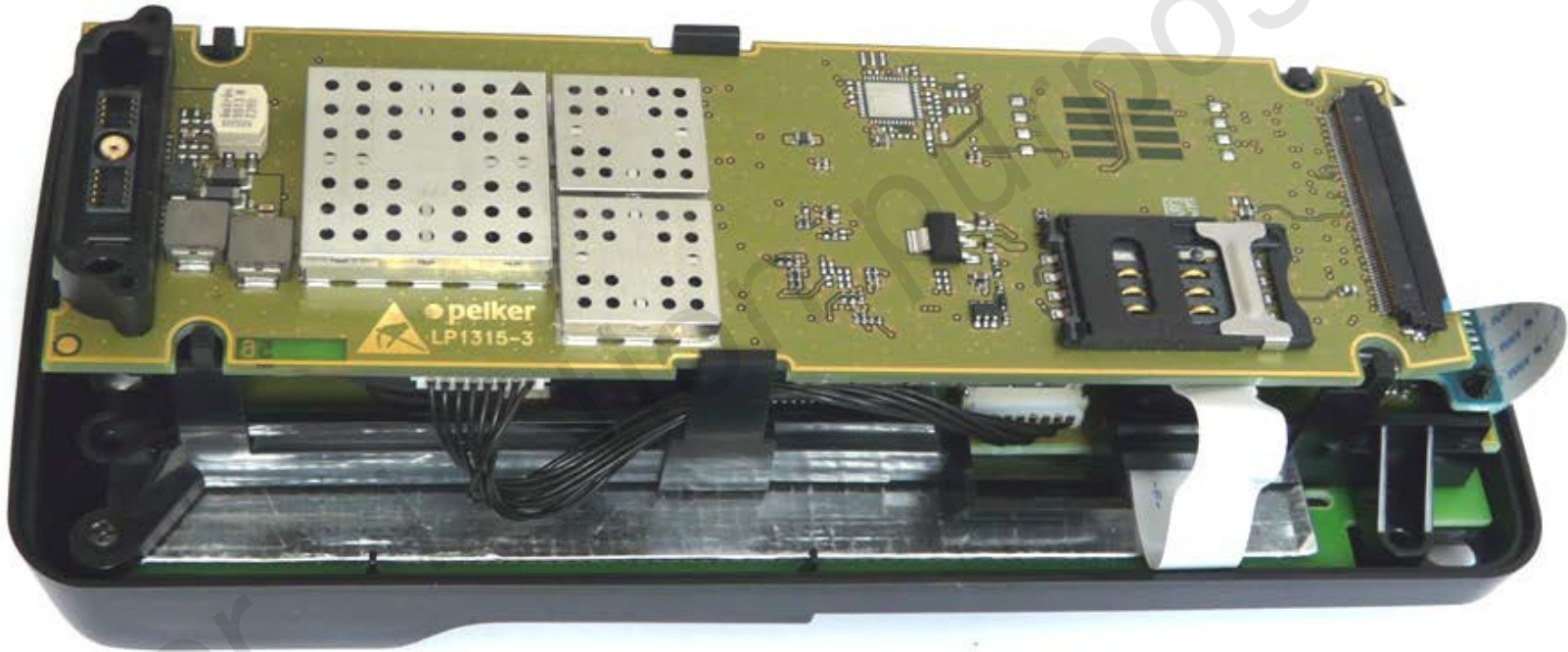


**BMW CSM 3.0 US Car Sharing Module
internal photos of the device**

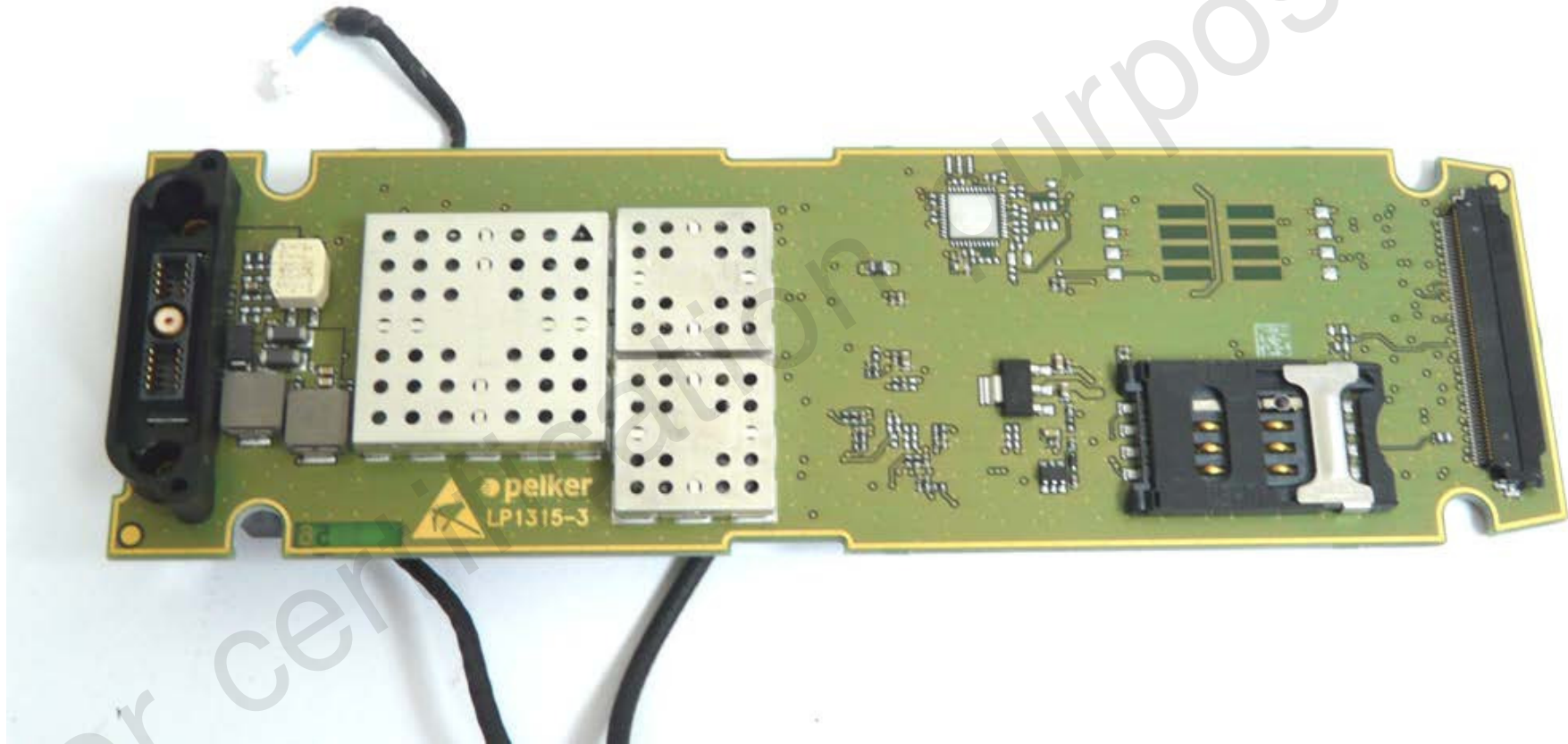
Main Module SIM card slot



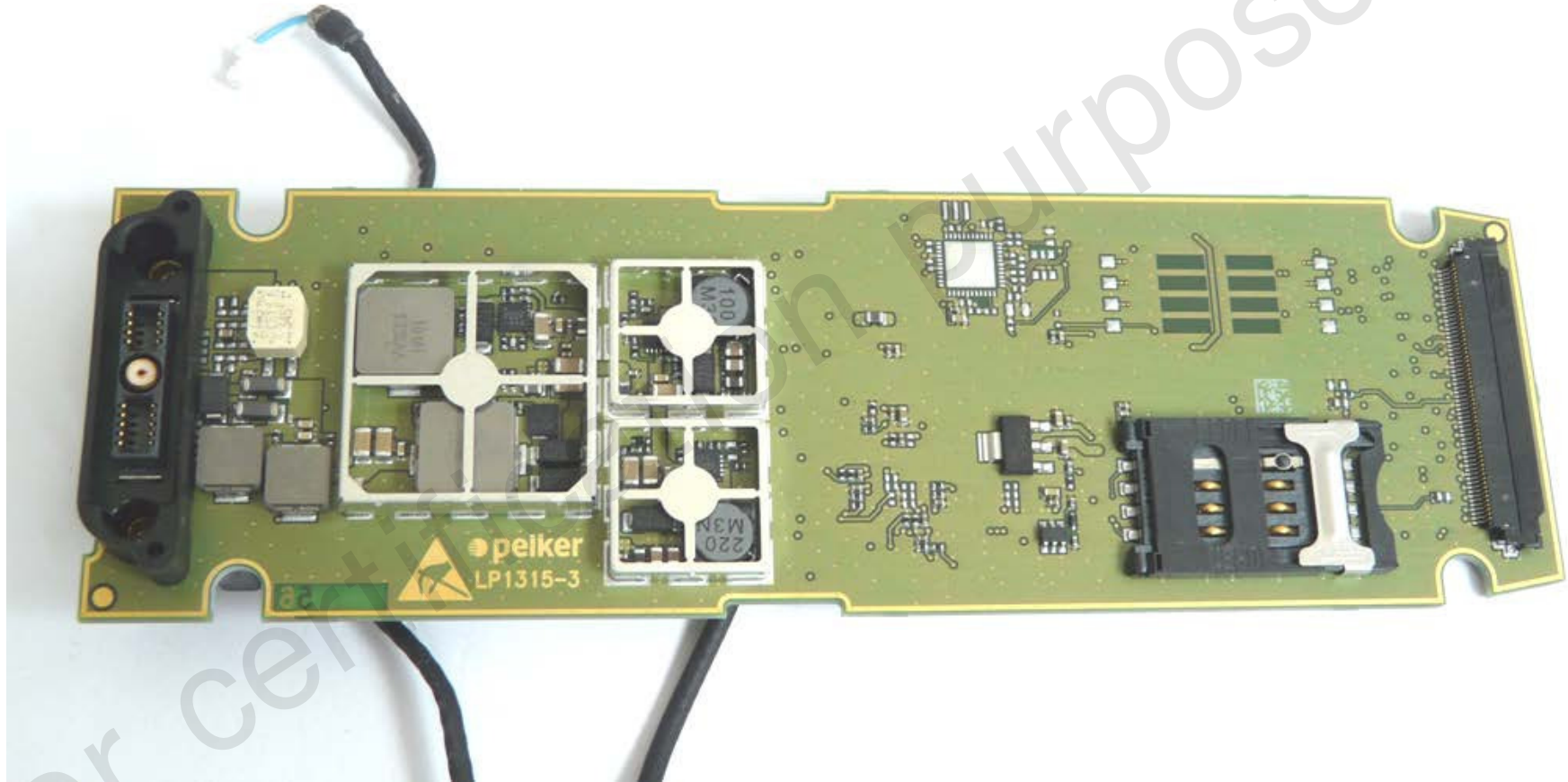
Main Module – uncovered (with shielding)



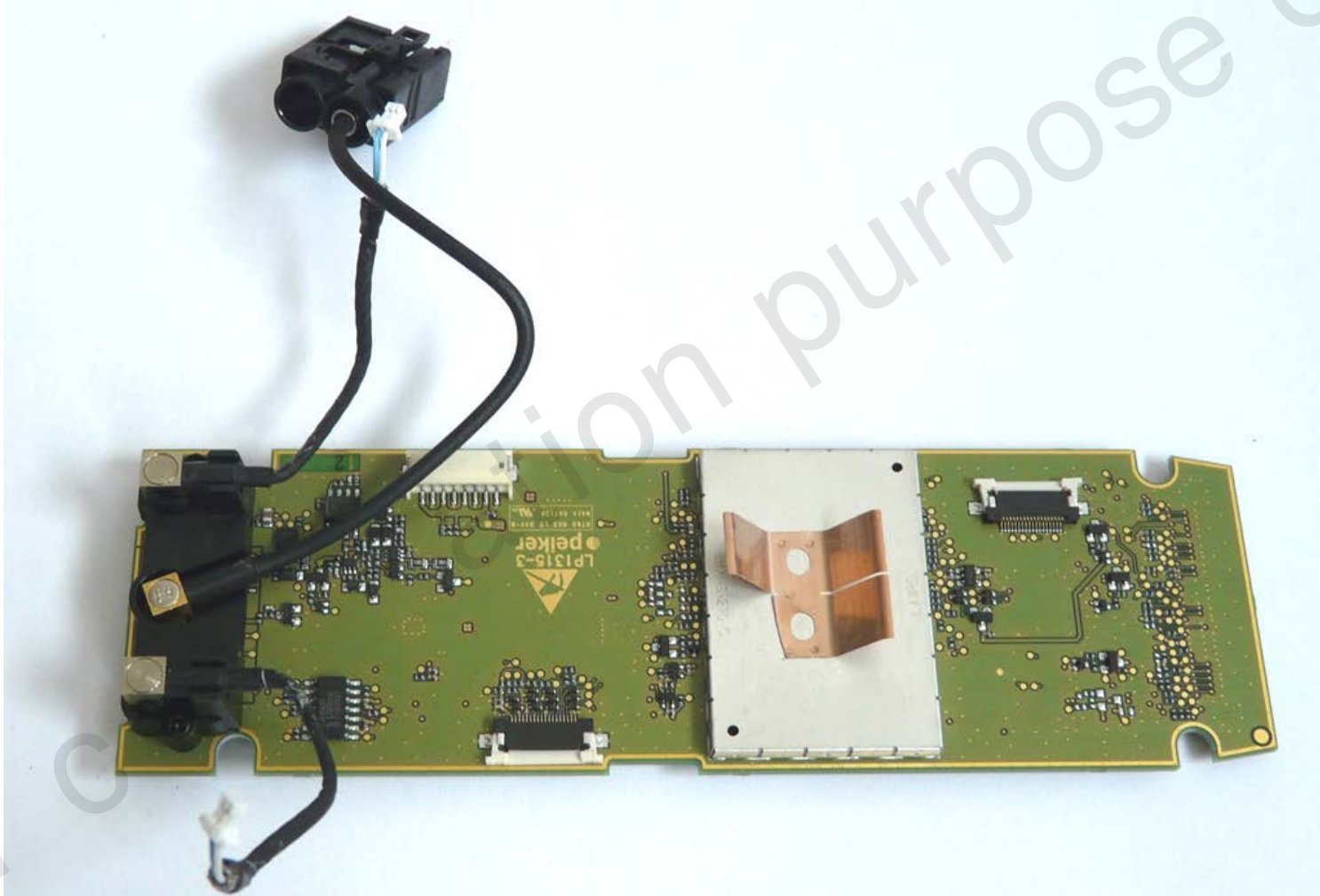
Main Board front (with shielding)



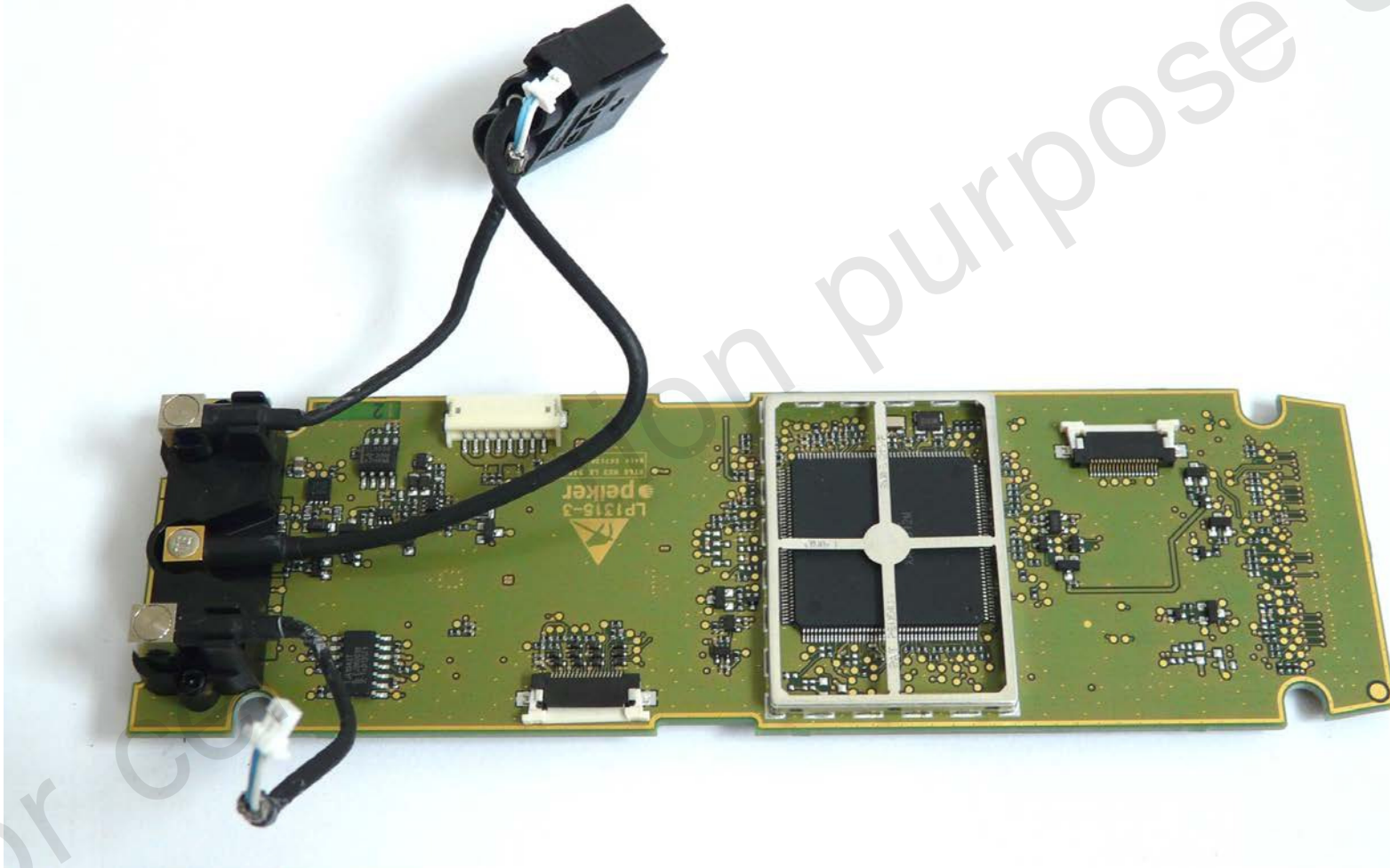
Main Board front (without shielding)



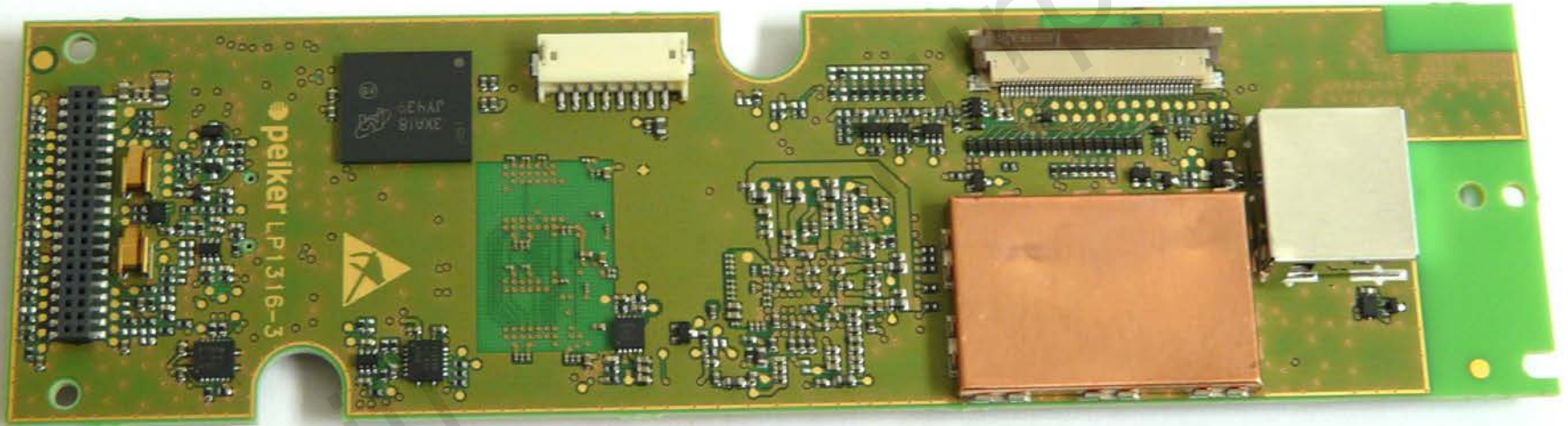
Main Board back (with shielding)



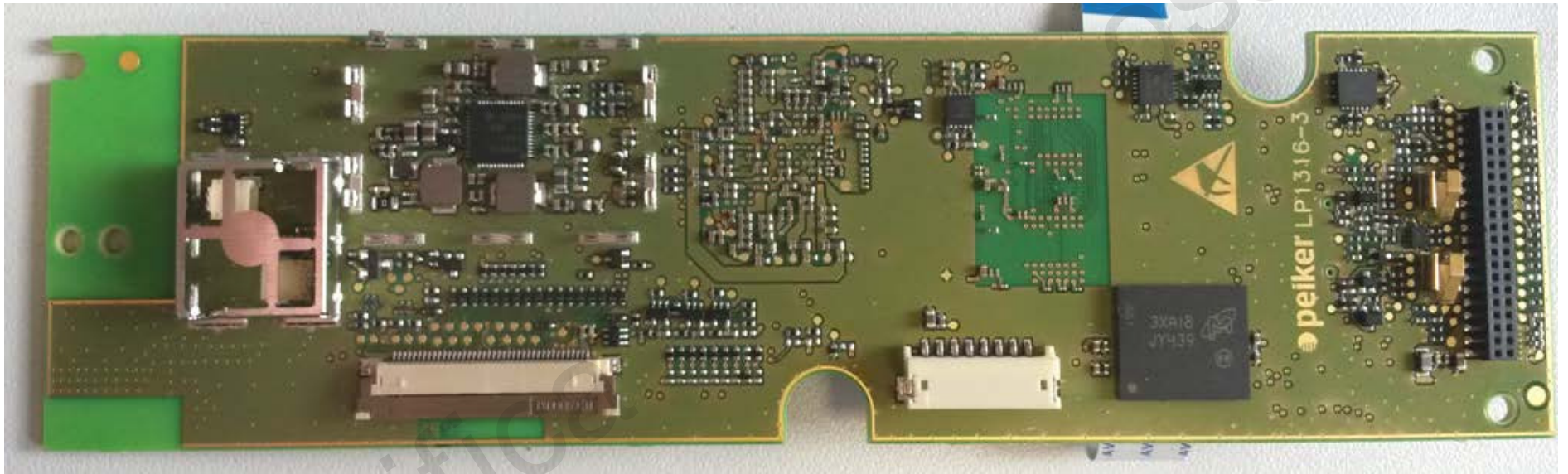
Main Board back (without shielding)



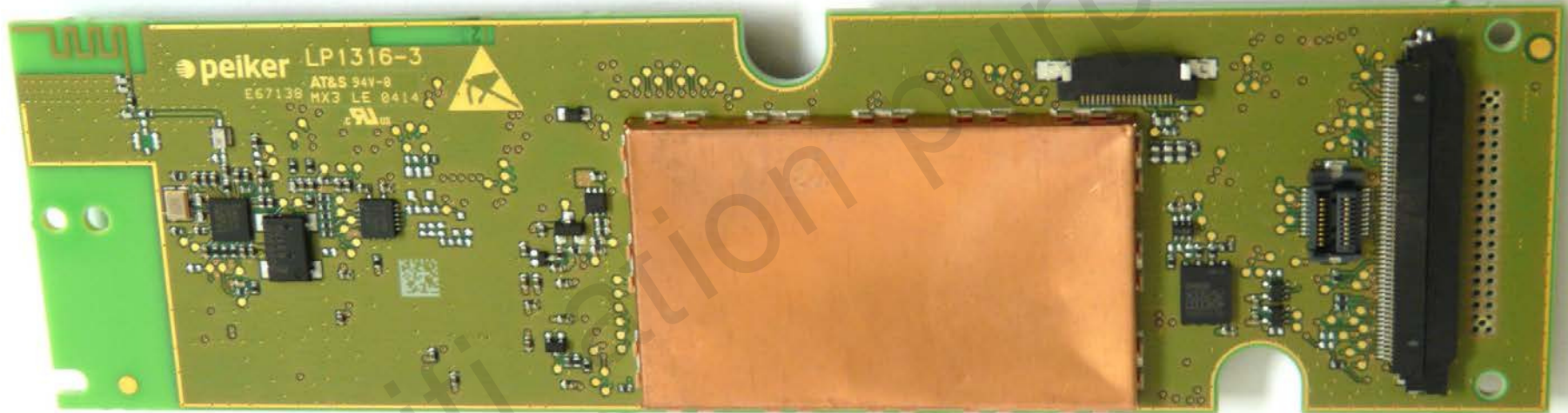
Application Board front (with shielding)



Application Board front (without shielding)



Application Board back (with shielding)



Application Board back (without shielding)



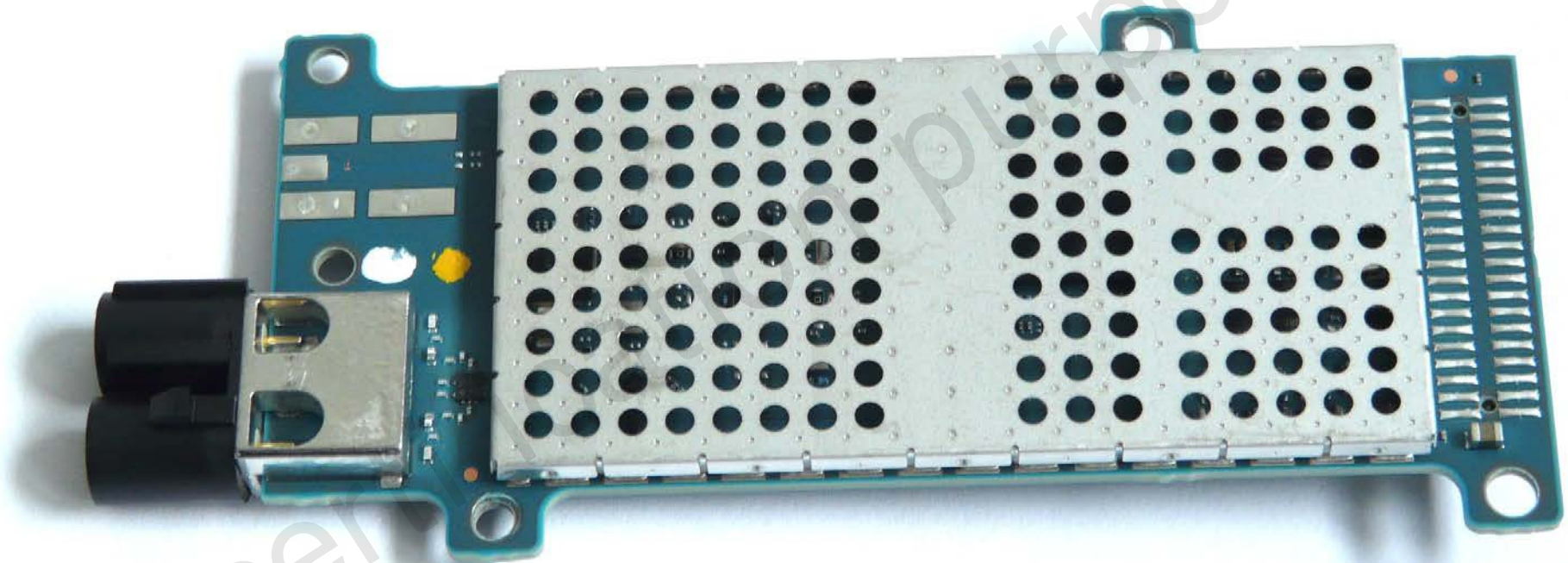
NFC/ RFI D Board front



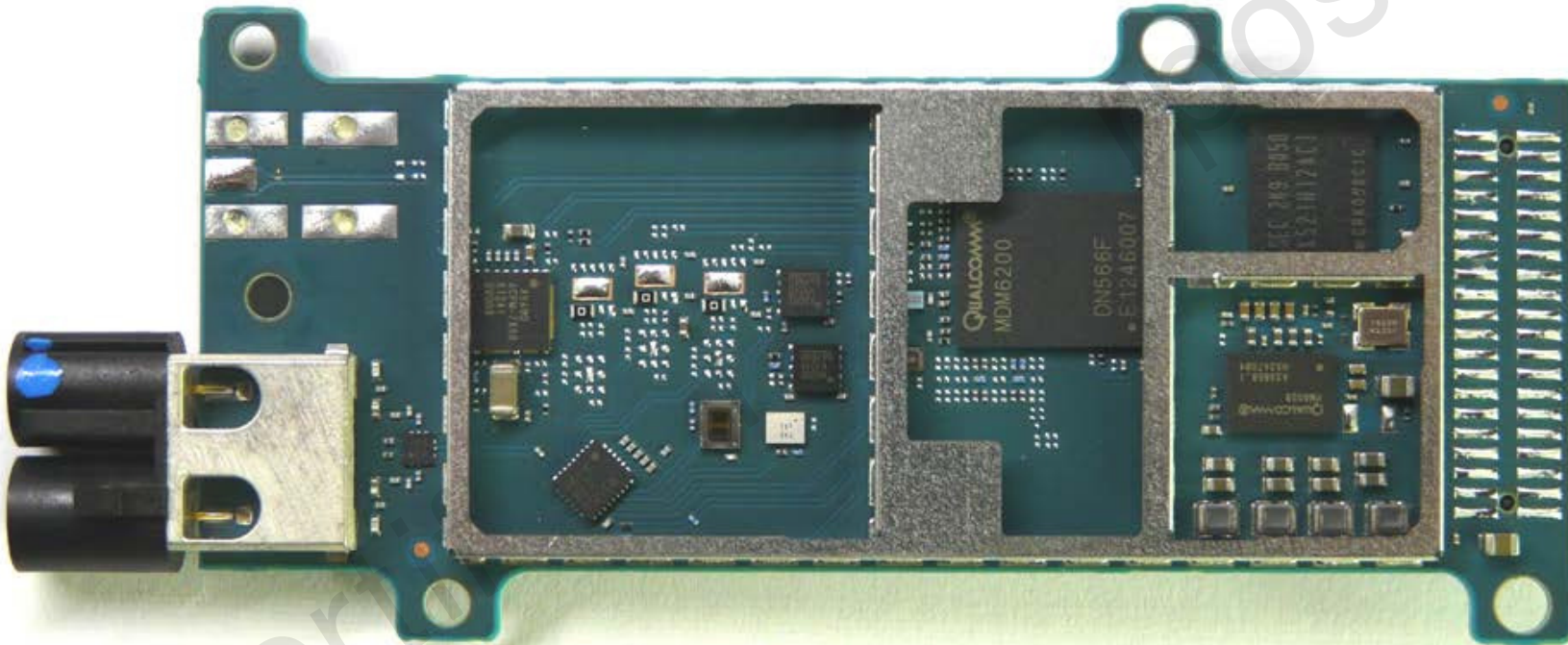
NFC/ RFI D Board back



Network Access Device (NAD) front



Network Access Device (NAD) front, unshielded



Network Access Device (NAD) back

