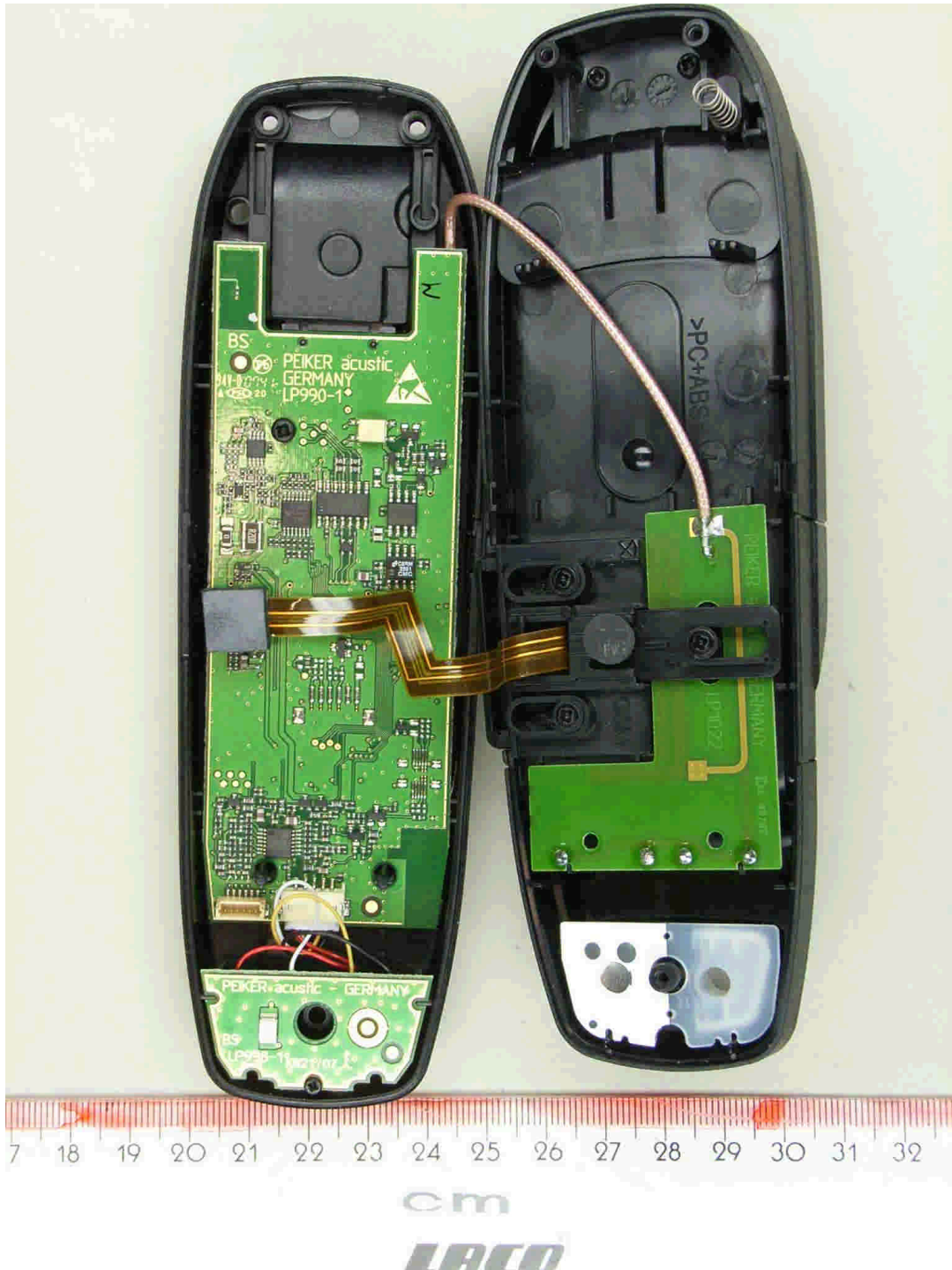


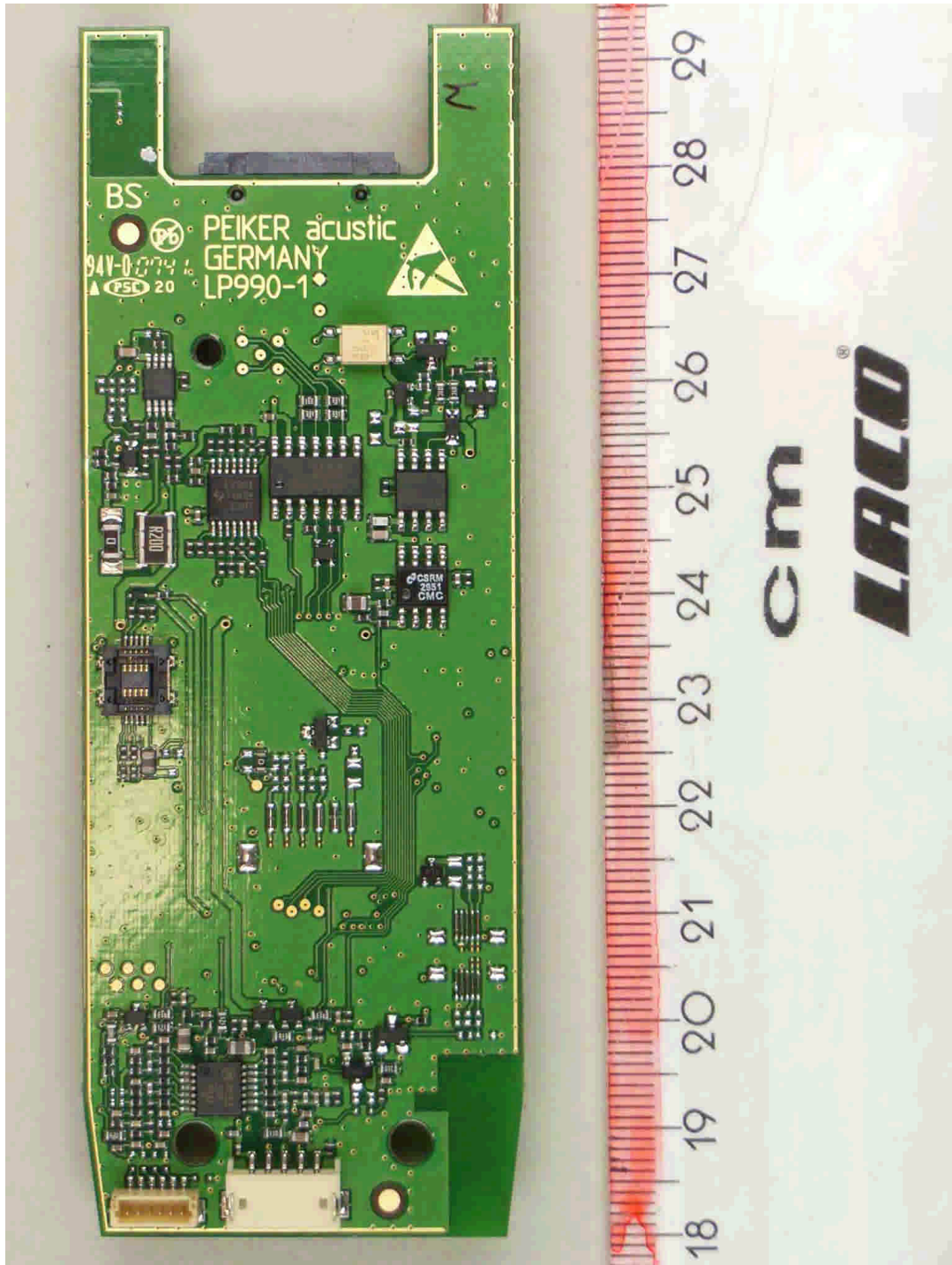
Annex B of test report R71750_B Edition 1
EUT: CKII (Motorola KRZR K1)
Manufacturer: Peiker acoustic GmbH & Co. KG



71750_6.jpg

CKII, internal view

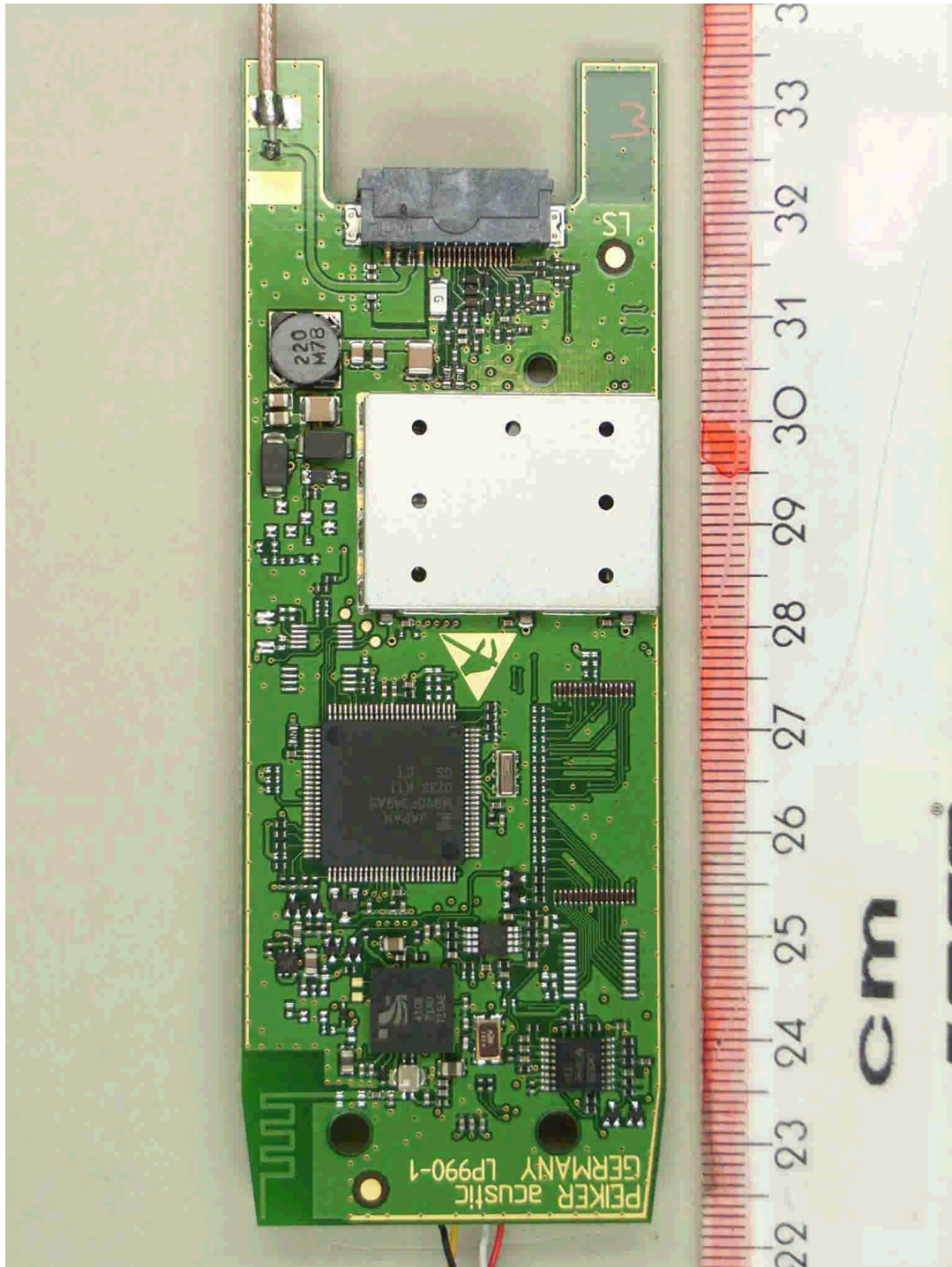
Annex B of test report R71750_B Edition 1
EUT: CKII (Motorola KRZR K1)
Manufacturer: Peiker acoustic GmbH & Co. KG



71750_2.jpg

CKII, main PCB, top view

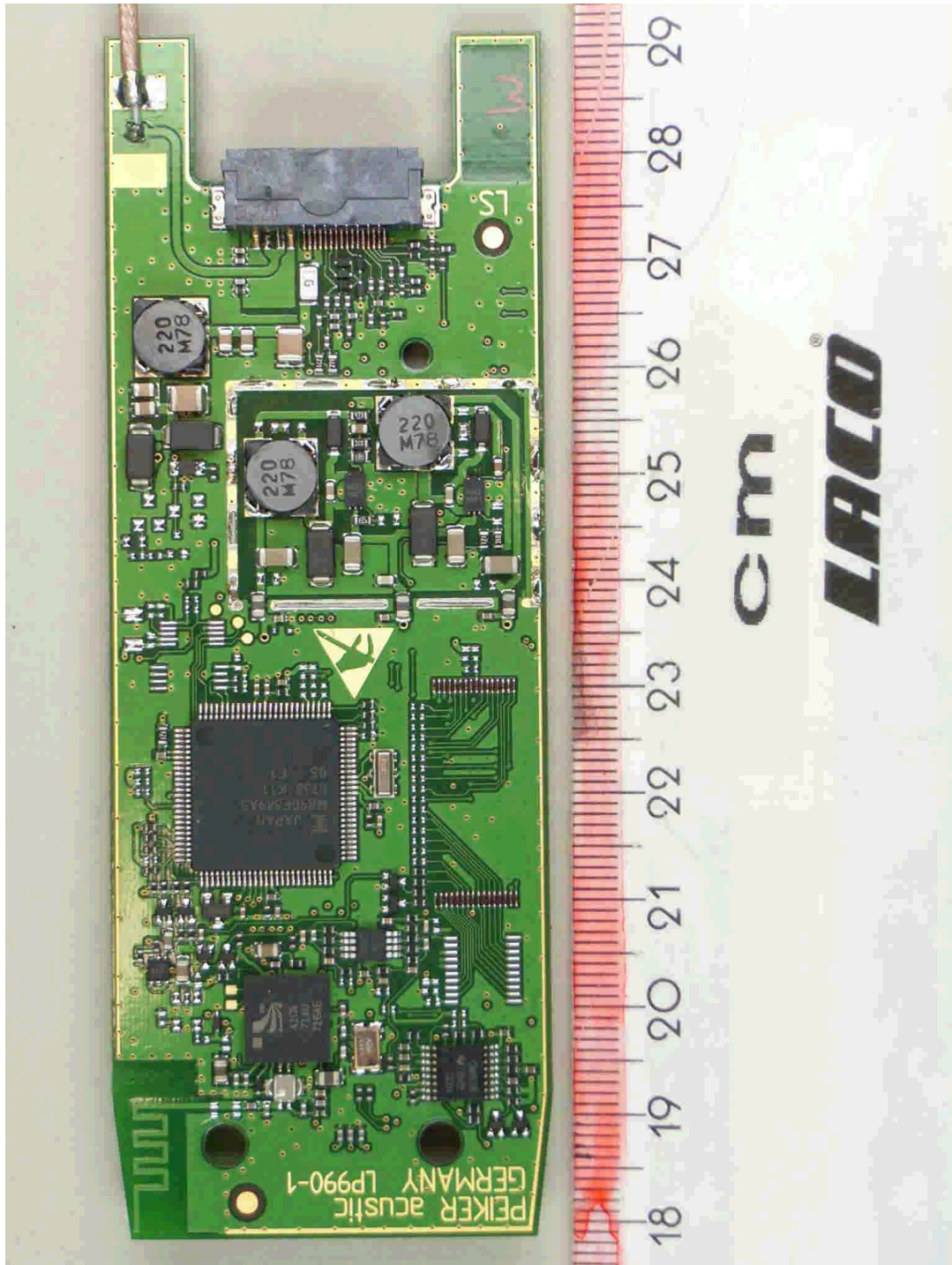
Annex B of test report R71750_B Edition 1
EUT: CKII (Motorola KRZR K1)
Manufacturer: Peiker acoustic GmbH & Co. KG



71750_4.jpg

CKII, main PCB, bottom view

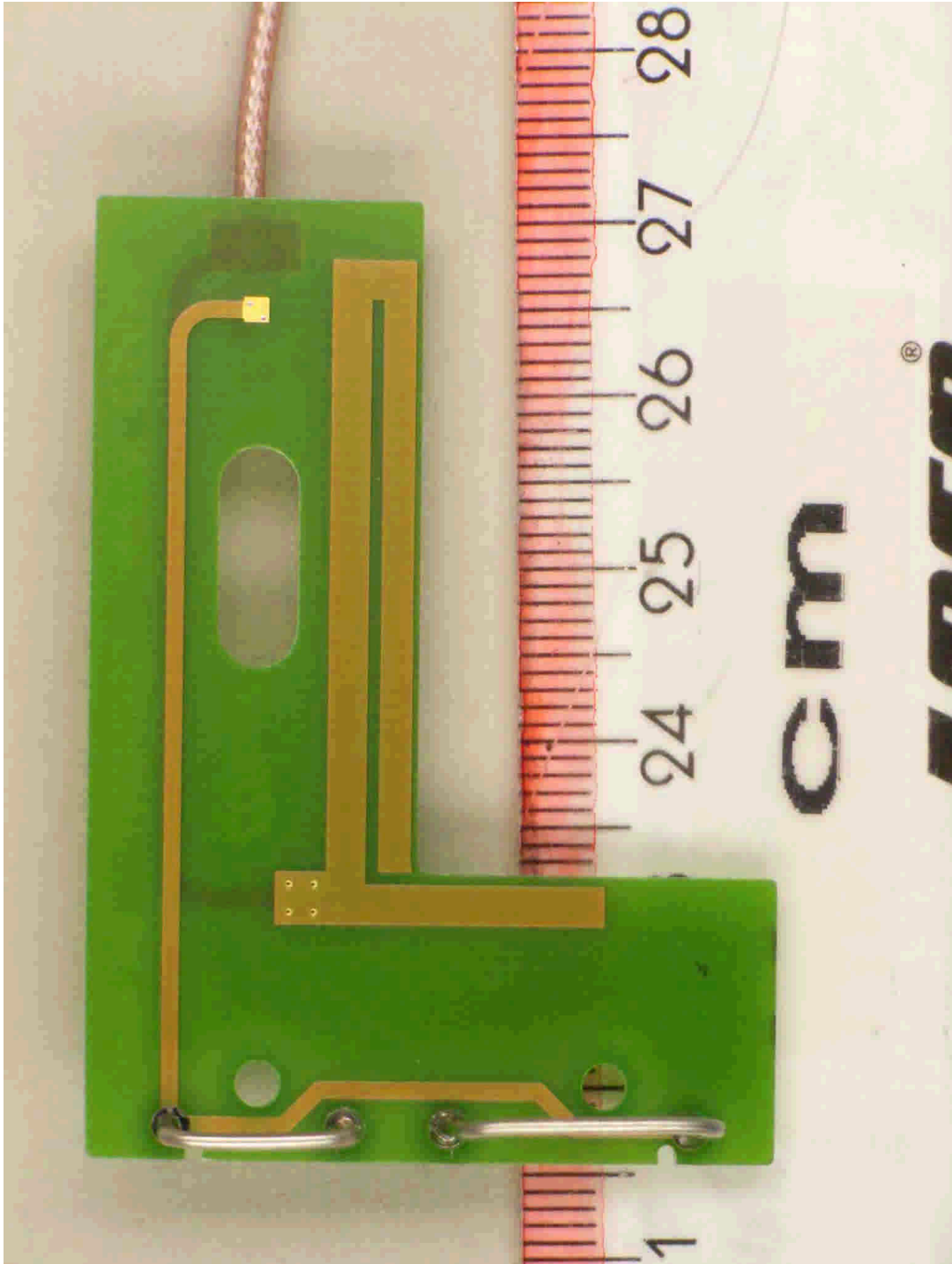
Annex B of test report R71750_B Edition 1
EUT: CKII (Motorola KRZR K1)
Manufacturer: Peiker acoustic GmbH & Co. KG



71750_8.jpg

CKII, main PCB, bottom view, cover removed

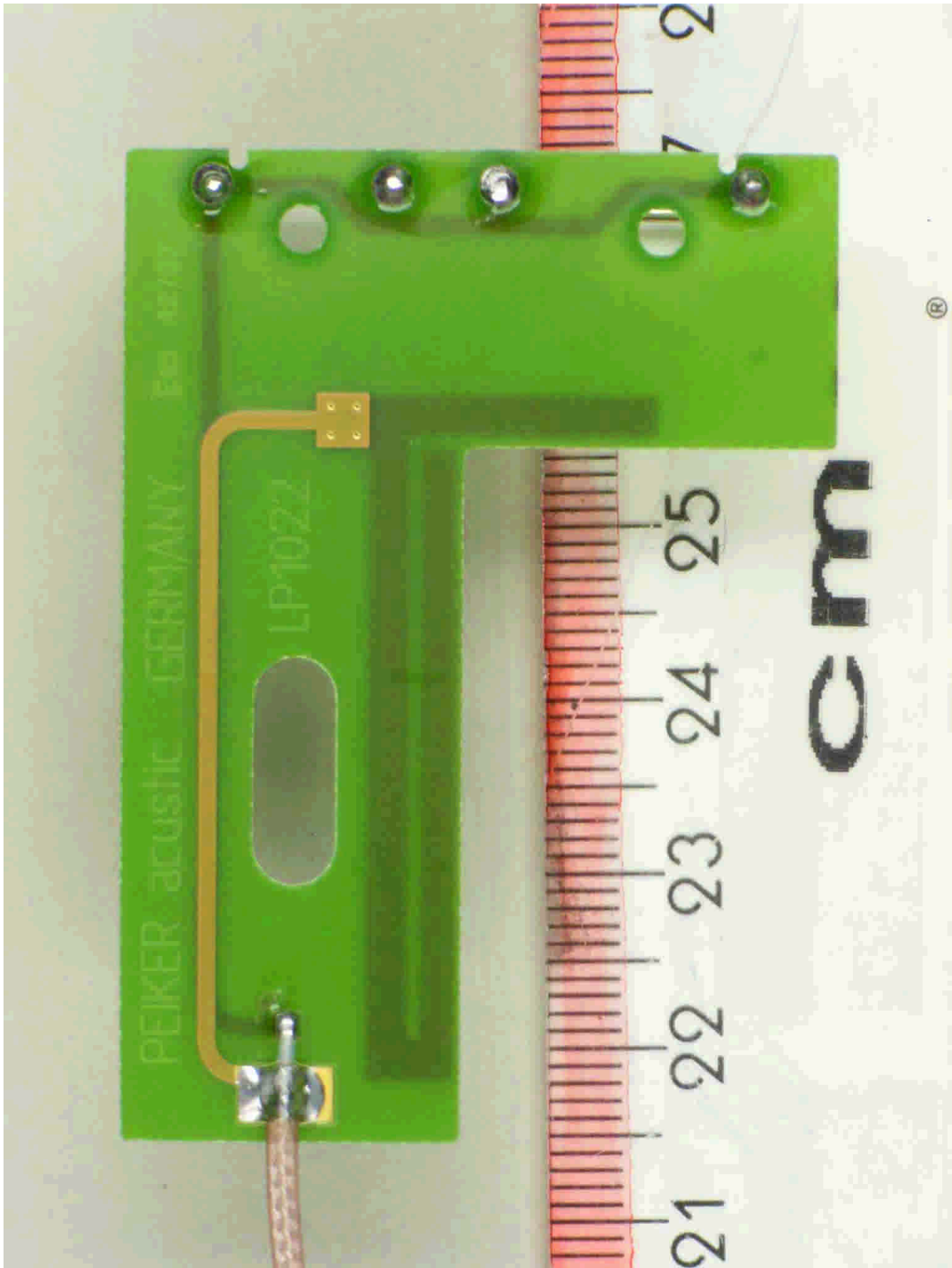
Annex B of test report R71750_B Edition 1
EUT: CKII (Motorola KRZR K1)
Manufacturer: Peiker acustic GmbH & Co. KG



71750_11.jpg

CKII, GSM coupler PCB, top view

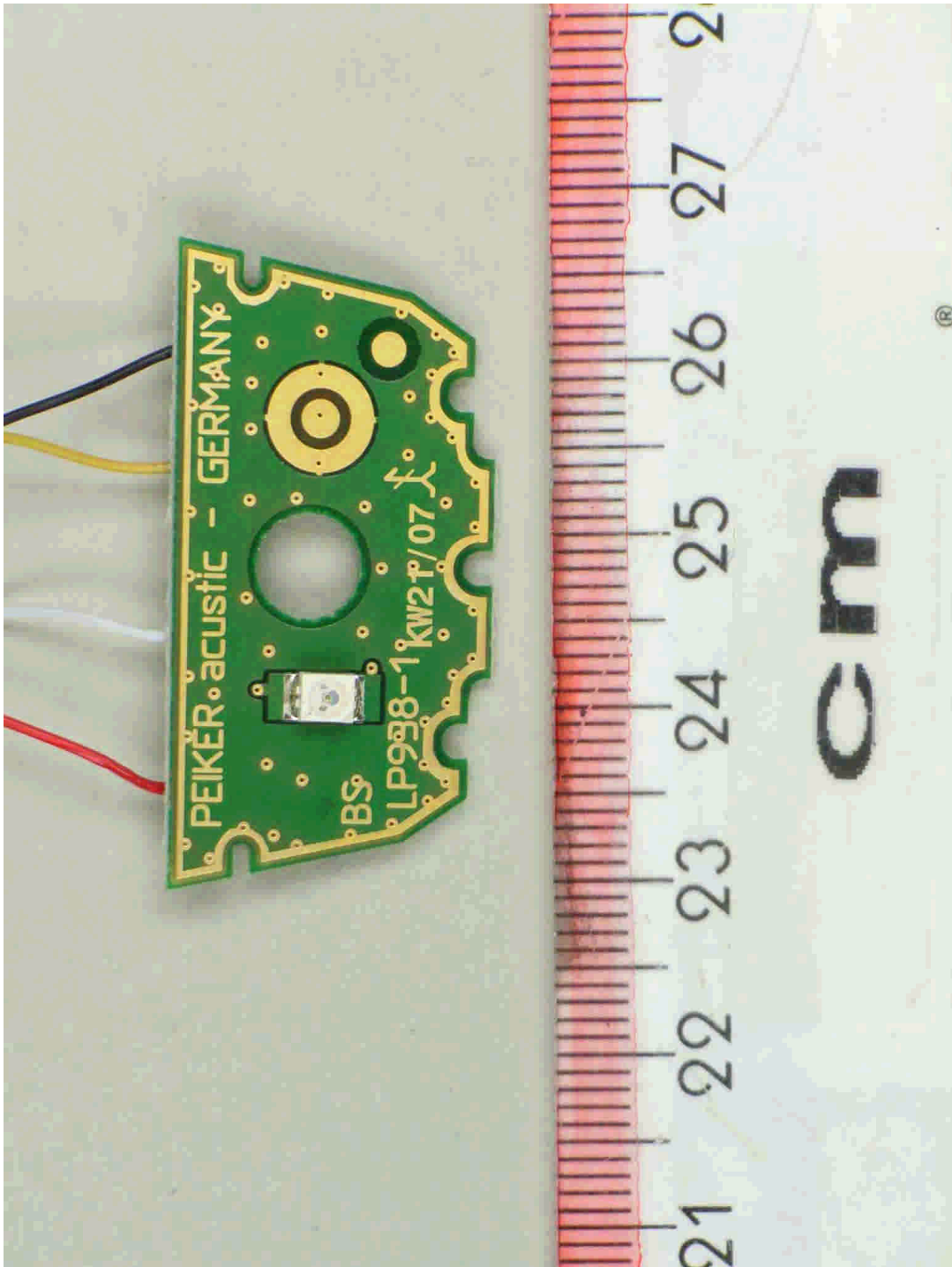
Annex B of test report R71750_B Edition 1
EUT: CKII (Motorola KRZR K1)
Manufacturer: Peiker acoustic GmbH & Co. KG



71750_13.jpg

CKII, GSM coupler PCB, bottom view

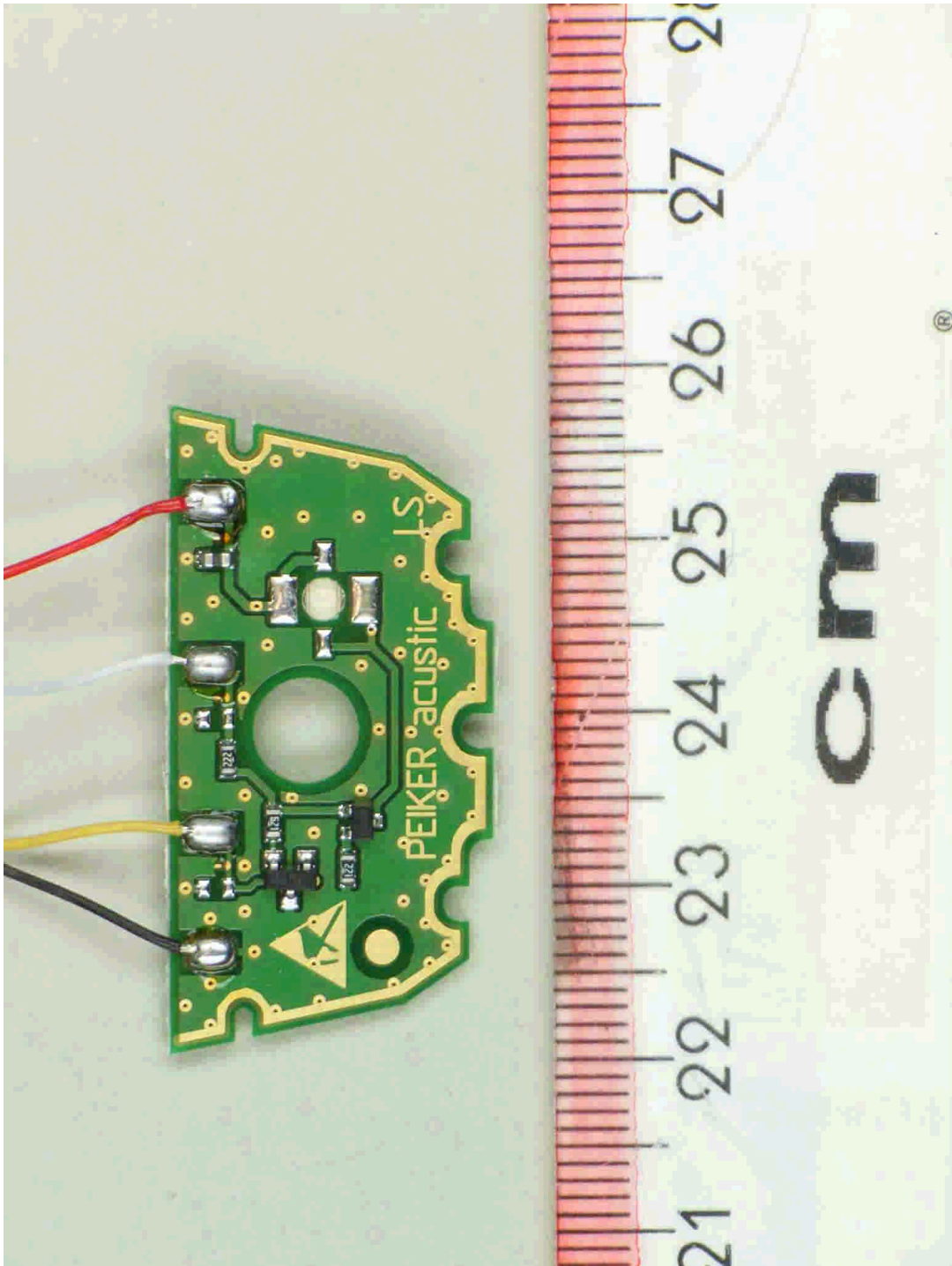
Annex B of test report R71750_B Edition 1
EUT: CKII (Motorola KRZR K1)
Manufacturer: Peiker acoustic GmbH & Co. KG



71750_7.jpg

CKII, ancillary PCB, top view

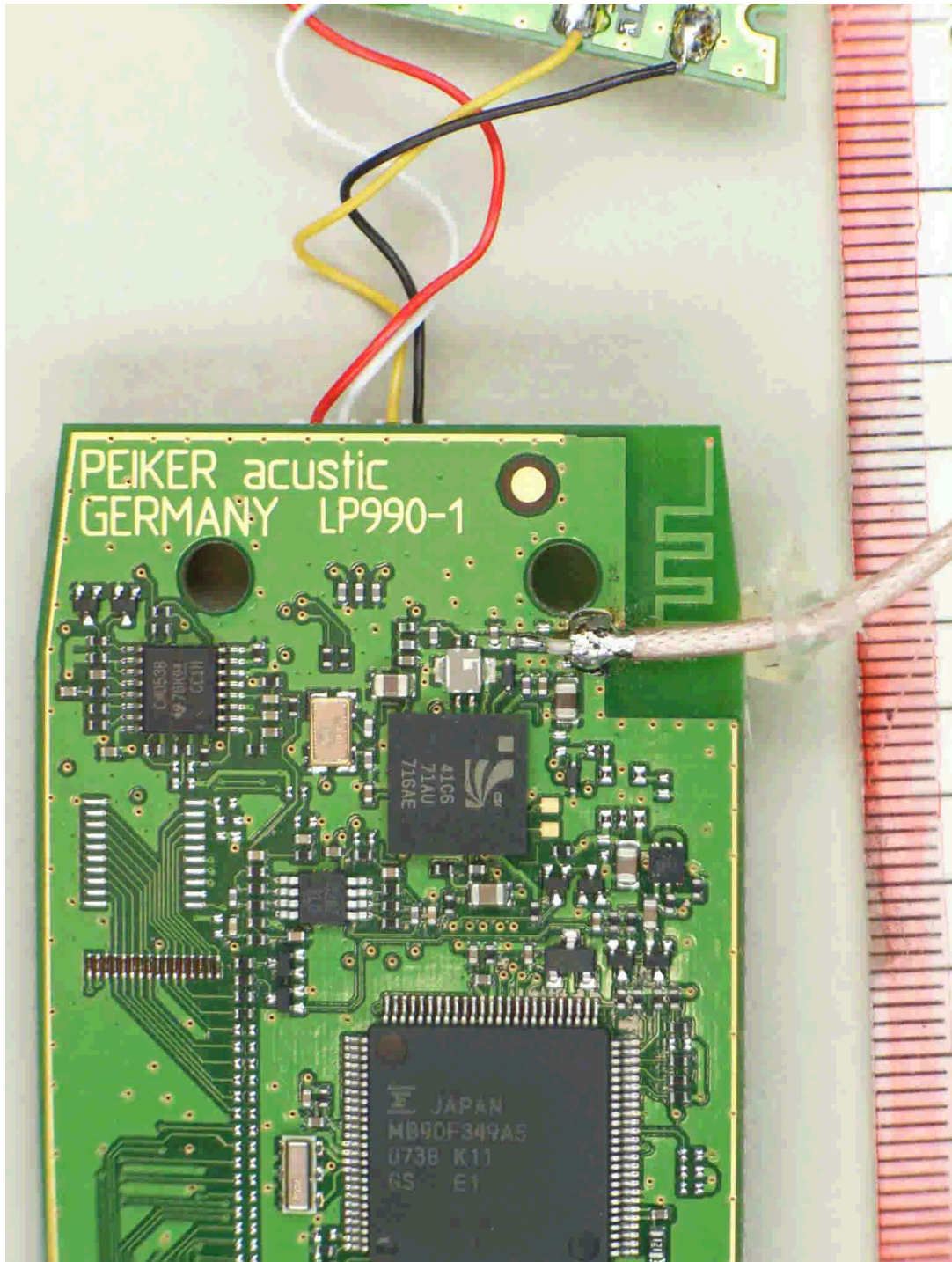
Annex B of test report R71750_B Edition 1
EUT: CKII (Motorola KRZR K1)
Manufacturer: Peiker acoustic GmbH & Co. KG



71750_5.jpg

CKII, ancillary PCB, bottom view

Annex B of test report R71750_B Edition 1
EUT: CKII (Motorola KRZR K1)
Manufacturer: Peiker acoustic GmbH & Co. KG



71750_1.jpg

CKII, detail view to sample with temporary antenna connector and external power supply