







Annex 2: Internal photographs to  
**TEST REPORT**  
 No.: 16-1-0001901T59a  
 16-1-0001901T61a,  
 16-1-0001901T62a

According to:  
**FCC Regulations**  
 Part 22, Part 24

for  
 peiker acoustic GmbH

Telematic Device  
 ATM-02-ROW-T1

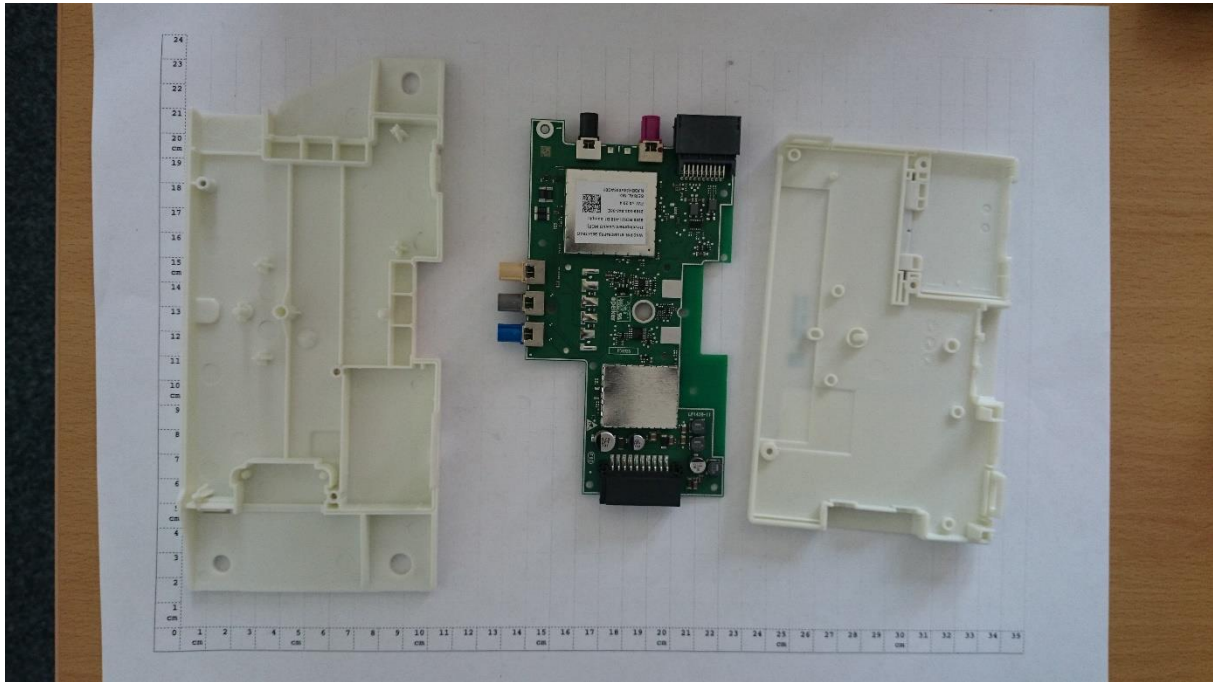
FCC: QWY-ATM2-T-13

Laboratory Accreditation and Listings			
 <p><b>DAkkS</b>            Deutsche            Akkreditierungsstelle            D-PL-12047-01-01</p>	 <p>FEDERAL COMMUNICATIONS COMMISSION  <b>FC</b>            USA            MRA US-EU 0003</p>	 <p>Industry Canada            Reg. No.: 3462D-1            Reg. No.: 3462D-2            Reg. No.: 3462D-3</p>	 <p>Voluntary Controls for            Electromagnetic Emissions            Reg. No.:            R-2666 C-2914,            T-1967, G-301</p>
 <p><b>WiFi</b>            ALLIANCE            AUTHORIZED            RF LABORATORY</p>	 <p><b>ctia</b> Authorized            Test Lab            Lab Code: 20011130-00</p>		
accredited according to DIN EN ISO/IEC 17025			
<p><b>CETECOM GmbH</b>            Laboratory Radio Communications &amp; Electromagnetic Compatibility            Im Teelbruch 116 • 45219 Essen • Germany            Registered in Essen, Germany, Reg. No.: HRB Essen 8984            Tel.: + 49 (0) 20 54 / 95 19-954 • Fax: + 49 (0) 20 54 / 95 19-964            E-mail: info@cetecom.com • Internet: www.cetecom.com</p>			

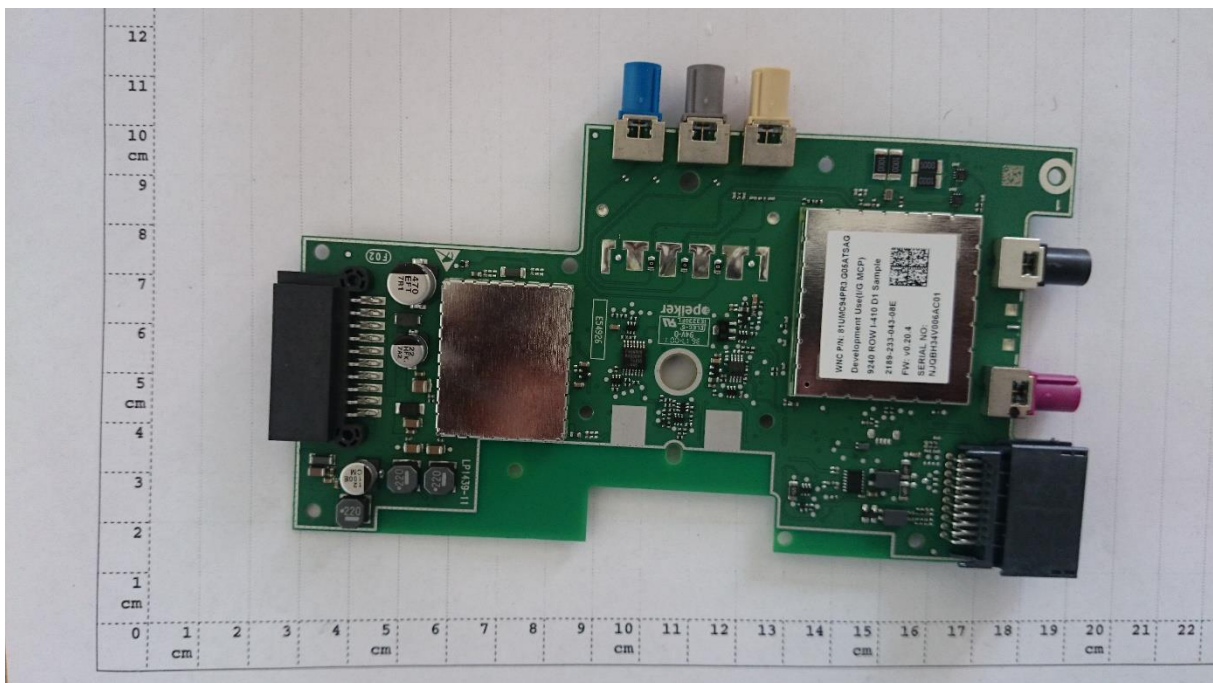
## **Table of contents**

**1. INTERNAL PHOTOGRAPHS.....3**

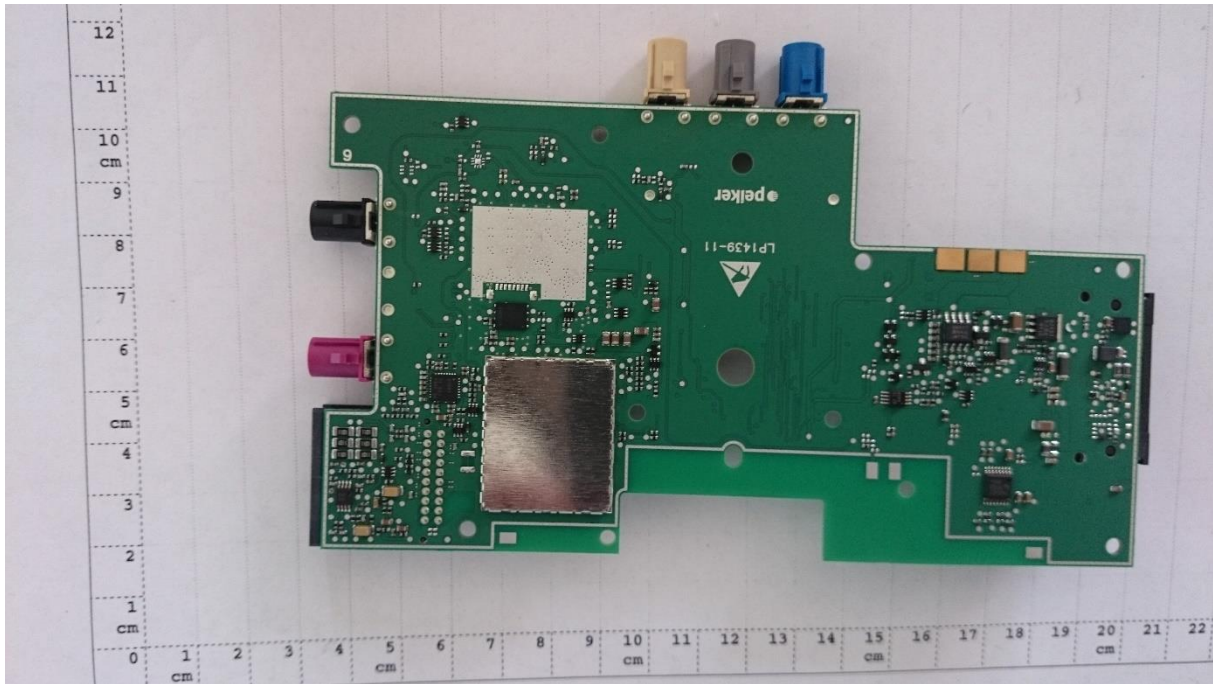
### 1. Internal photographs



PCB top side with cover



PCB close view front side



PCB close view backside