

Annex 3: External photographs to
TEST REPORT
 No.: 16-1-0001901T59a,
 16-1-0001901T61a,
 16-1-0001901T62a

According to:
FCC Regulations
 Part 22, Part 24

for
 peiker acoustic GmbH

Telematic Device
 ATM-02-ROW-T1

FCC: QWY-ATM2-T-13







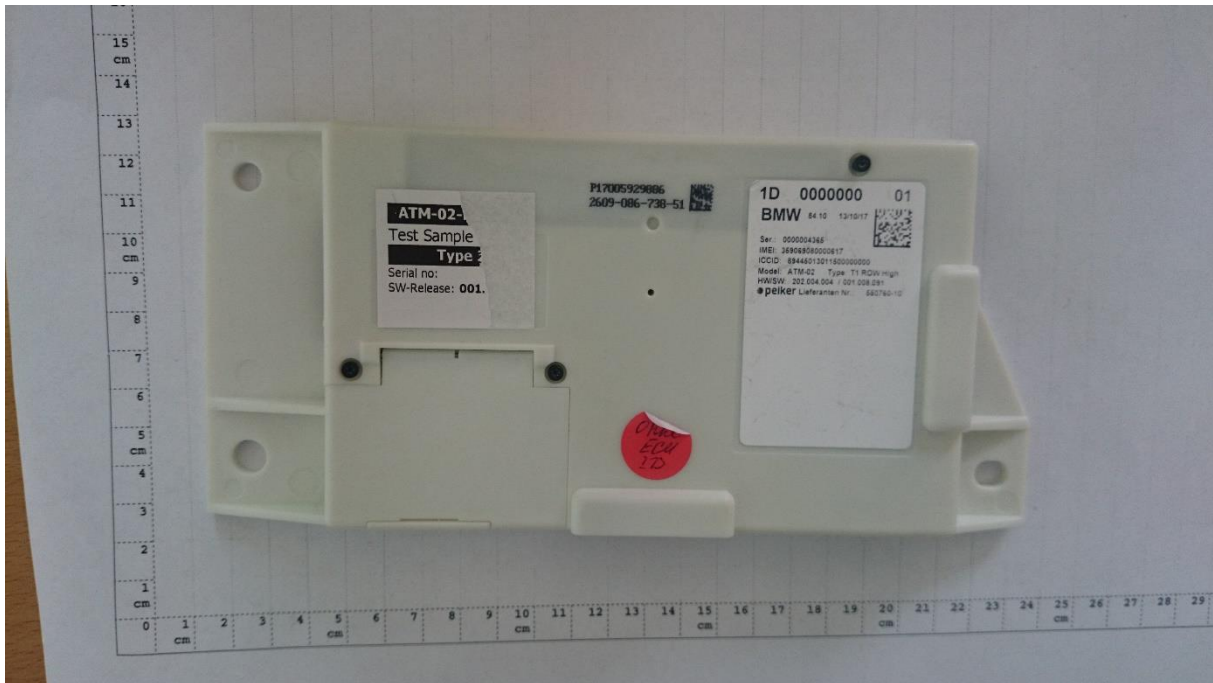
Laboratory Accreditation and Listings			
 DAkKS Deutsche Akkreditierungsstelle D-PL-12047-01-01	 FEDERAL COMMUNICATIONS COMMISSION FCC USA MRA US-EU 0003	 Industry Canada Reg. No.: 3462D-1 Reg. No.: 3462D-2 Reg. No.: 3462D-3	 Voluntary Controls for Electromagnetic Emissions Reg. No.: R-2666 C-2914, T-1967, G-301
 WiFi ALLIANCE AUTHORIZED RF LABORATORY	 ctia Authorized Test Lab Lab Code: 20011130-00		
accredited according to DIN EN ISO/IEC 17025			
<p align="center"> CETECOM GmbH Laboratory Radio Communications & Electromagnetic Compatibility Im Teelbruch 116 • 45219 Essen • Germany Registered in Essen, Germany, Reg. No.: HRB Essen 8984 Tel.: + 49 (0) 20 54 / 95 19-954 • Fax: + 49 (0) 20 54 / 95 19-964 E-mail: info@cetecom.com • Internet: www.cetecom.com </p>			

Table of contents

1. EXTERNAL PHOTOGRAPHS.....	3
1.1. Main device under test (EUT/DUT)	3
1.2. Accessories	7

1. External photographs

1.1. Main device under test (EUT/DUT)



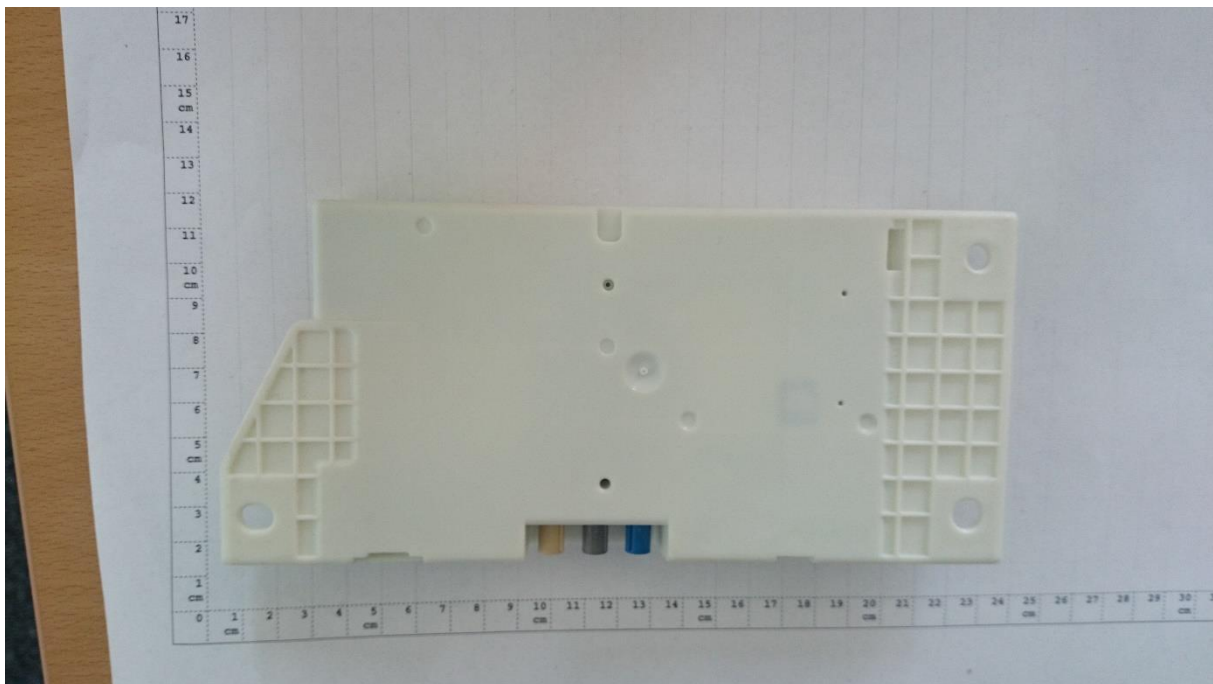
Photograph 1: Front side view



Photograph 2: right side view



Photograph 3: left side view



Photograph 4: back side view



Photograph 5: under side view

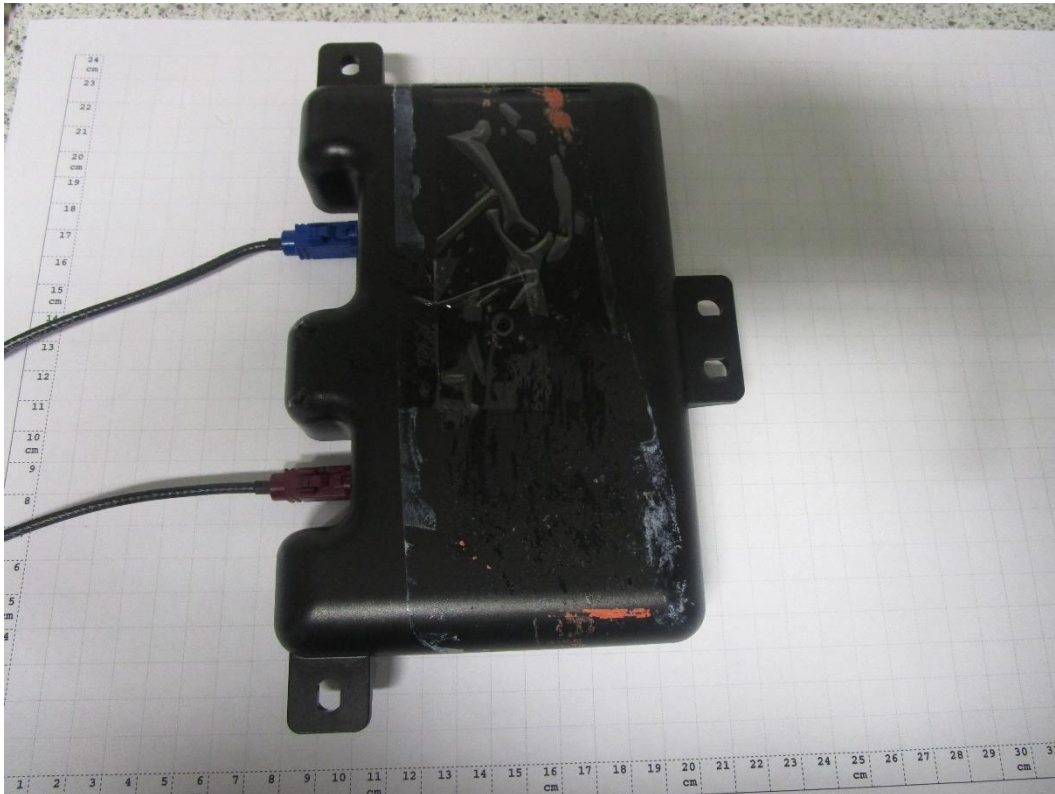


Photograph 6: top side view



Photograph 7: Conducted Sample with external SIM CARD holder

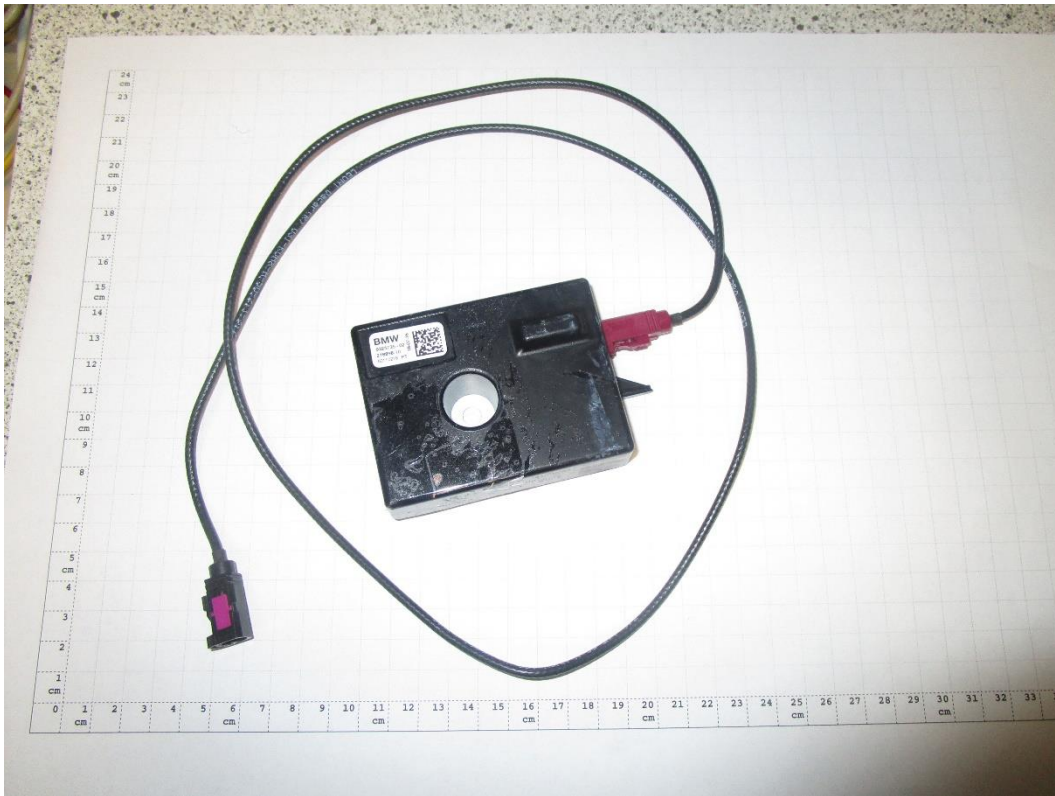
1.2. Accessories



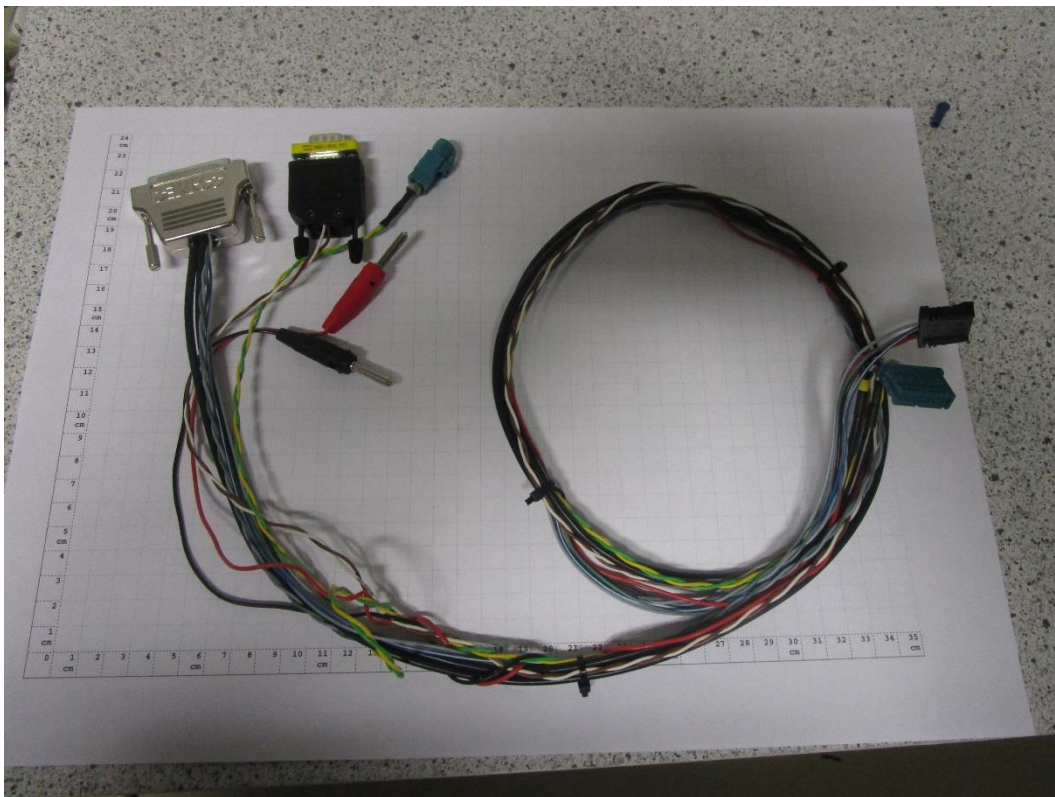
Photograph 8: Main Antenna



Photograph 9: Diversity Antenna



Photograph 10: Backup Antenna



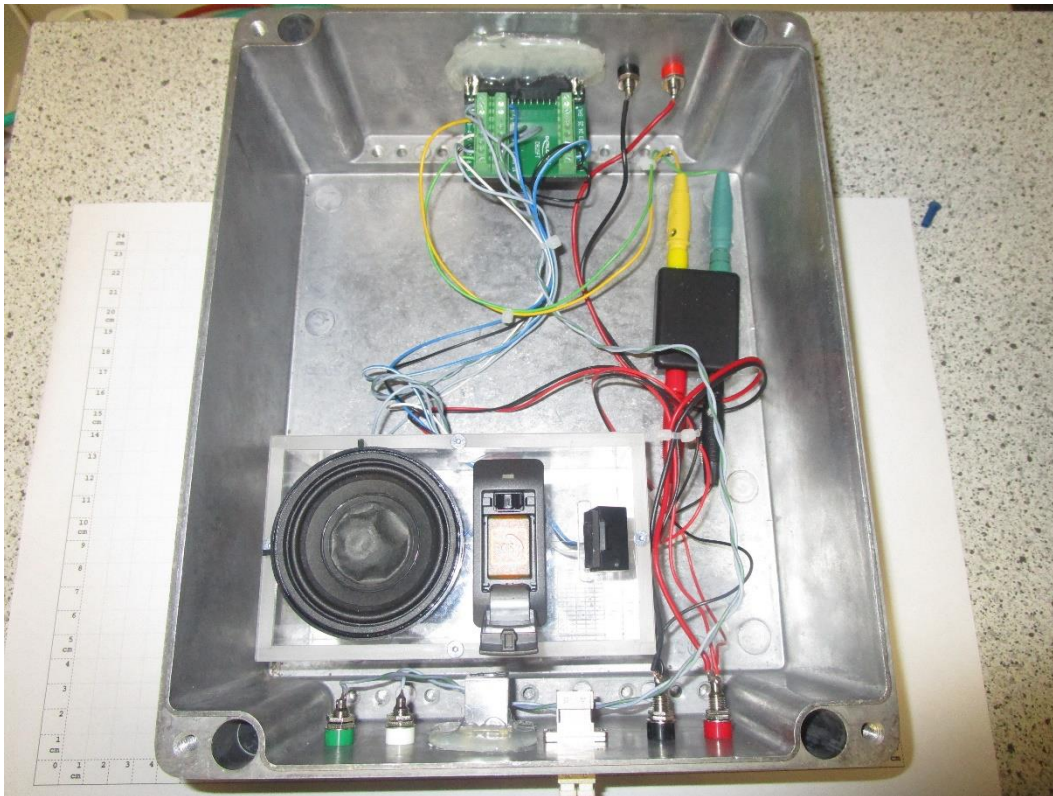
Photograph 11: Main wiring



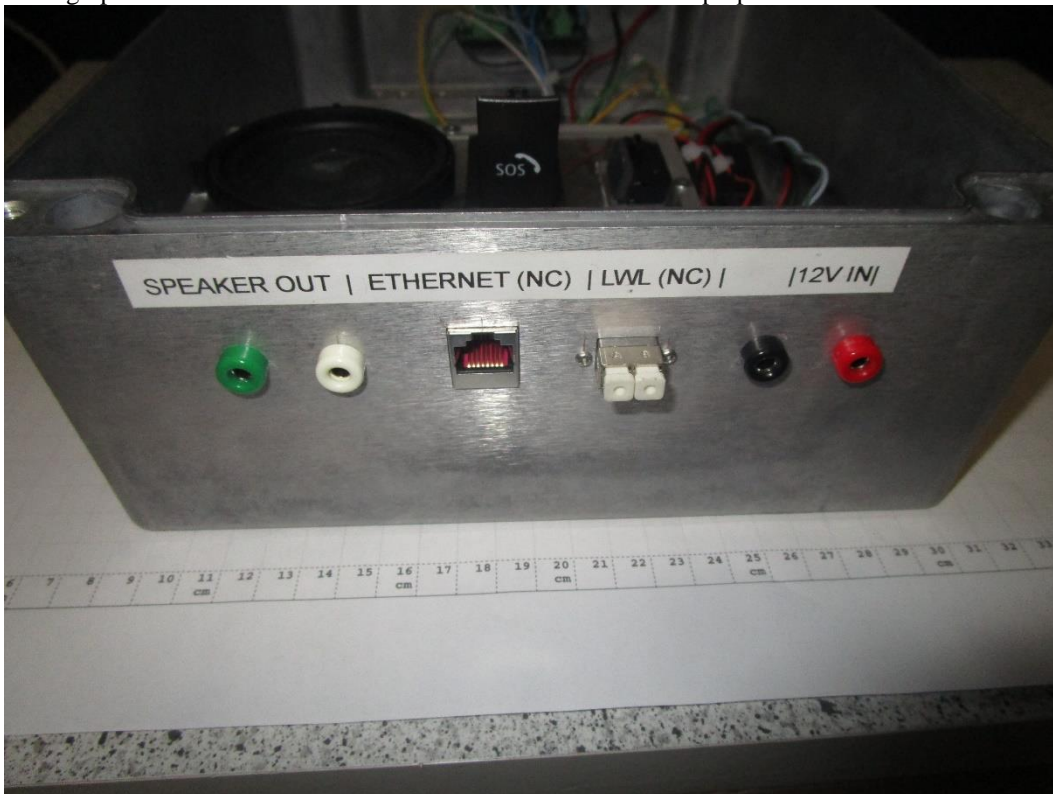
Photograph 12: connection box outside chamber



Photograph 13 Connectionbox inside chamber connected with laptop



Photograph 14 Connectionbox inside chamber connected with Laptop



Photograph 15 Connectionbox inside chamber through fibre optic cable