

Annex 3: External photographs to  
**TEST REPORT**  
 No.: 16-1-0001901T65a,  
 16-1-0001901T66a,  
 16-1-0001901T67a

According to:  
**FCC Regulations**  
 Part 22, Part 24







**IC-Regulations**  
 RSS-132 Issue 3, RSS-133 Issue 6,  
 RSS-Gen Issue 4

for

peiker acoustic GmbH

Telematic Device  
 ATM-02-US-T1

FCC: QWY-ATM2-T-11  
 ISED: 6588A-ATM2T11  
 PMN: ATM 02 Trunk version  
 HVIN: ATM-02-US-T1

Laboratory Accreditation and Listings			
 <b>DAkKS</b> Deutsche Akkreditierungsstelle D-PL-12047-01-01	 <b>FCC</b> FEDERAL COMMUNICATIONS COMMISSION USA MRA US-EU 0003	 Industry Canada Reg. No.: 3462D-1 Reg. No.: 3462D-2 Reg. No.: 3462D-3	 Voluntary Controls for Electromagnetic Emissions Reg. No.: R-2666 C-2914, T-1967, G-301
 <b>WiFi</b> ALLIANCE AUTHORIZED RF LABORATORY	 <b>ctia</b> Authorized Test Lab Lab Code: 20011130-00		
accredited according to DIN EN ISO/IEC 17025			
<p align="center"><b>CETECOM GmbH</b></p> <p align="center">Laboratory Radio Communications &amp; Electromagnetic Compatibility            Im Teelbruch 116 • 45219 Essen • Germany            Registered in Essen, Germany, Reg. No.: HRB Essen 8984            Tel.: + 49 (0) 20 54 / 95 19-954 • Fax: + 49 (0) 20 54 / 95 19-964            E-mail: info@cetecom.com • Internet: www.cetecom.com</p>			

## Table of contents

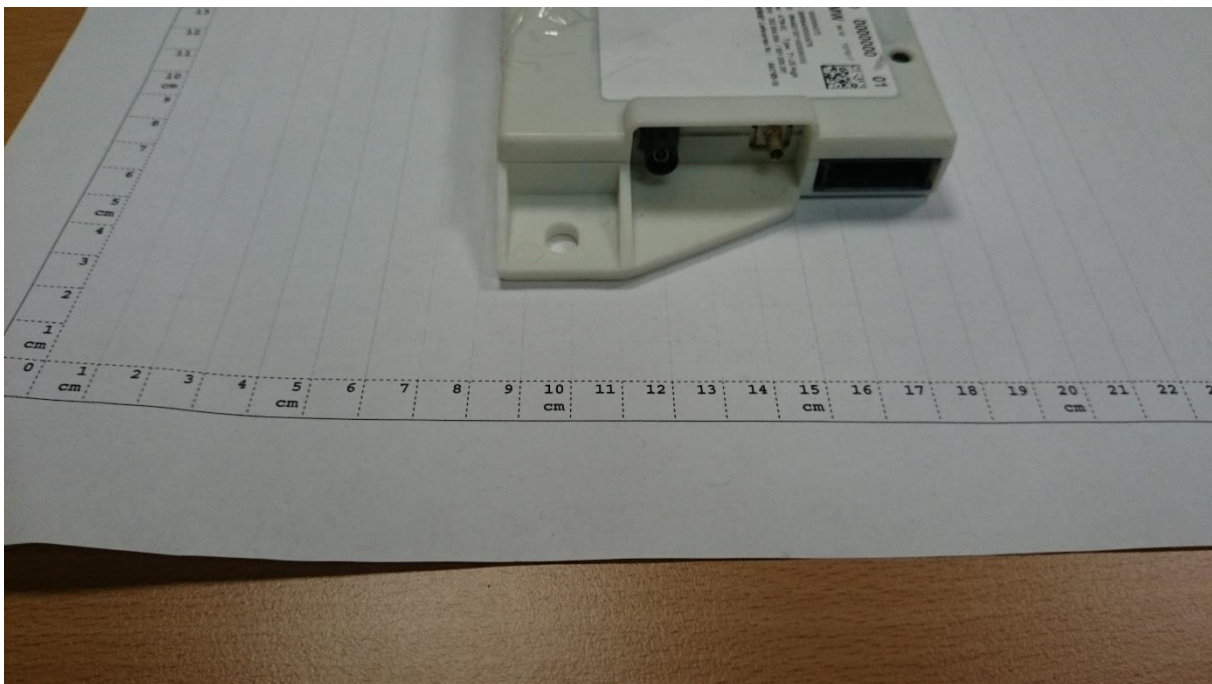
<b>1. EXTERNAL PHOTOGRAPHS.....</b>	<b>3</b>
1.1. Main device under test (EUT/DUT) .....	3
1.2. Accessories .....	7

# 1. External photographs

## 1.1. Main device under test (EUT/DUT)



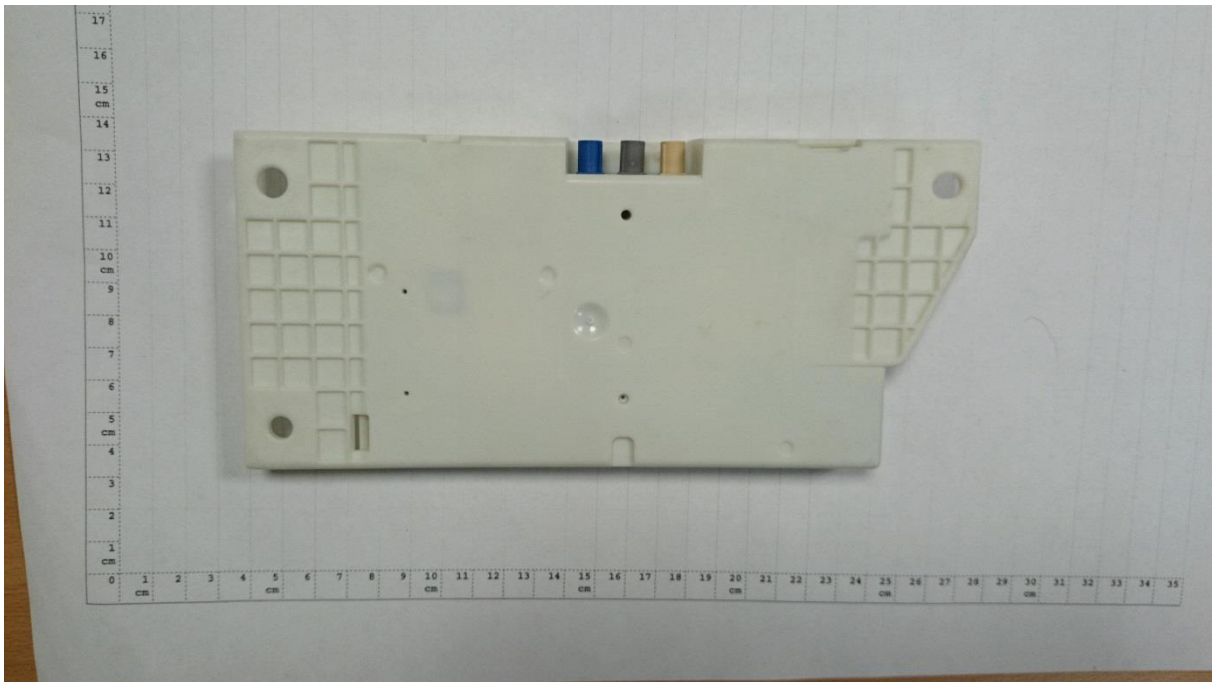
Photograph 1: Front side view



Photograph 2: right side view



Photograph 3: left side view



Photograph 4: back side view

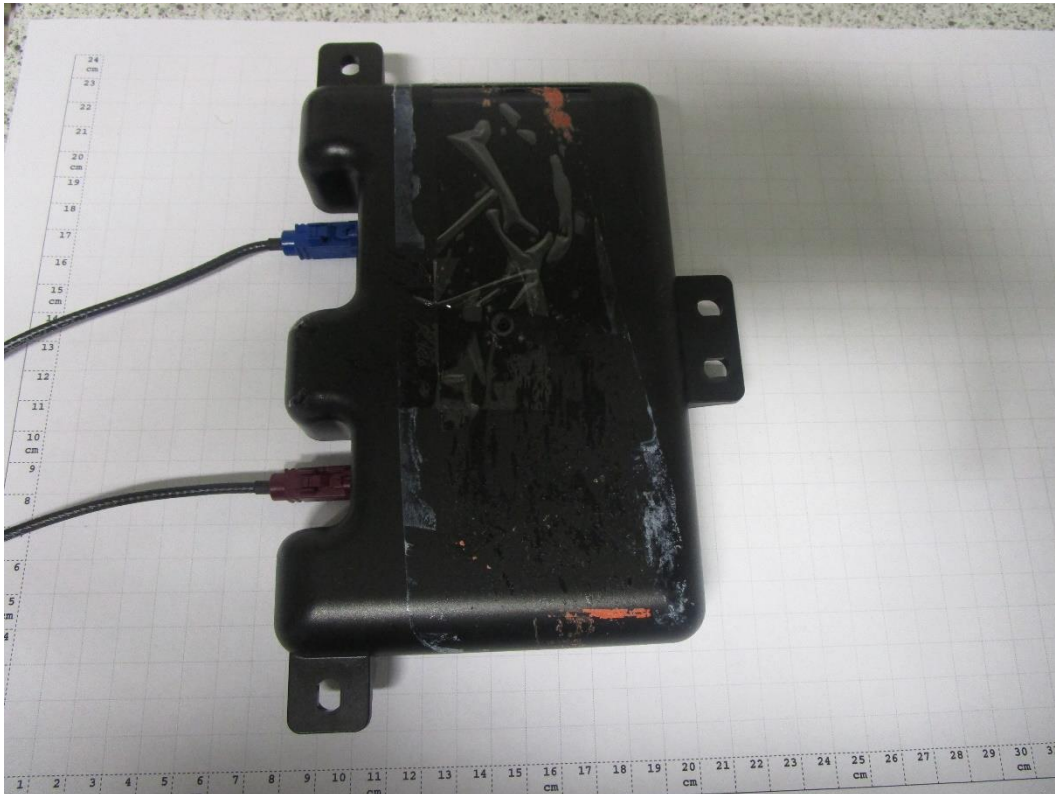




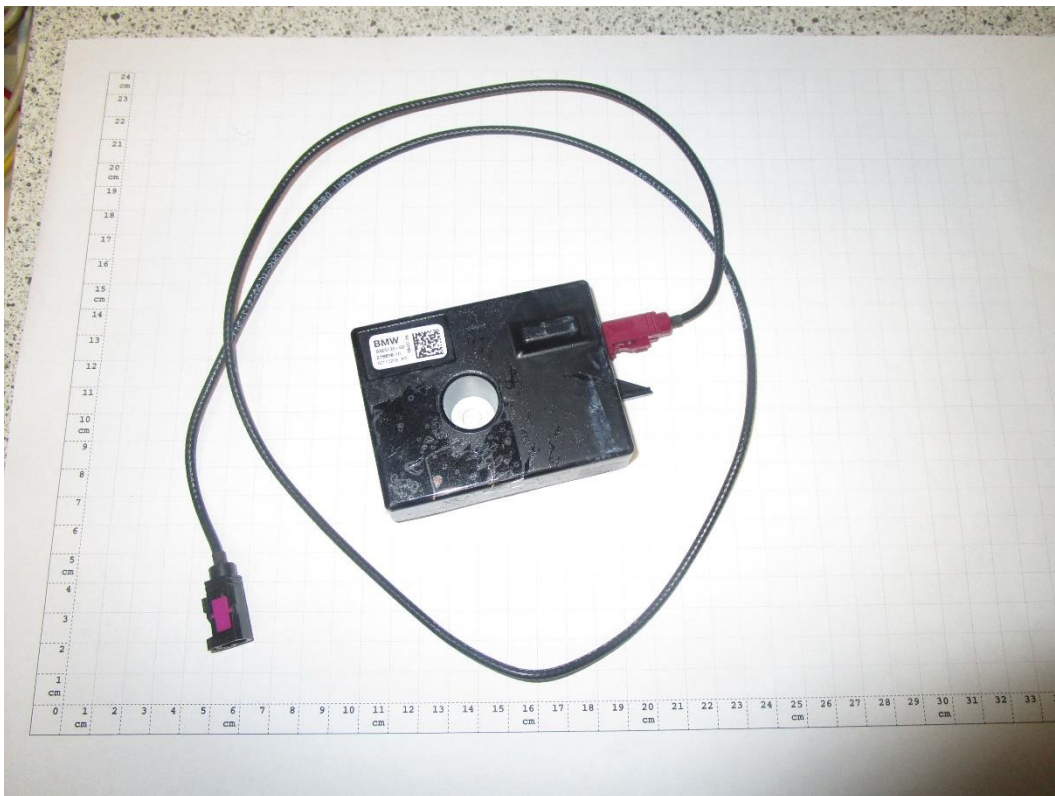


Photograph 7: Conducted Sample with external SIM CARD holder

## 1.2. Accessories



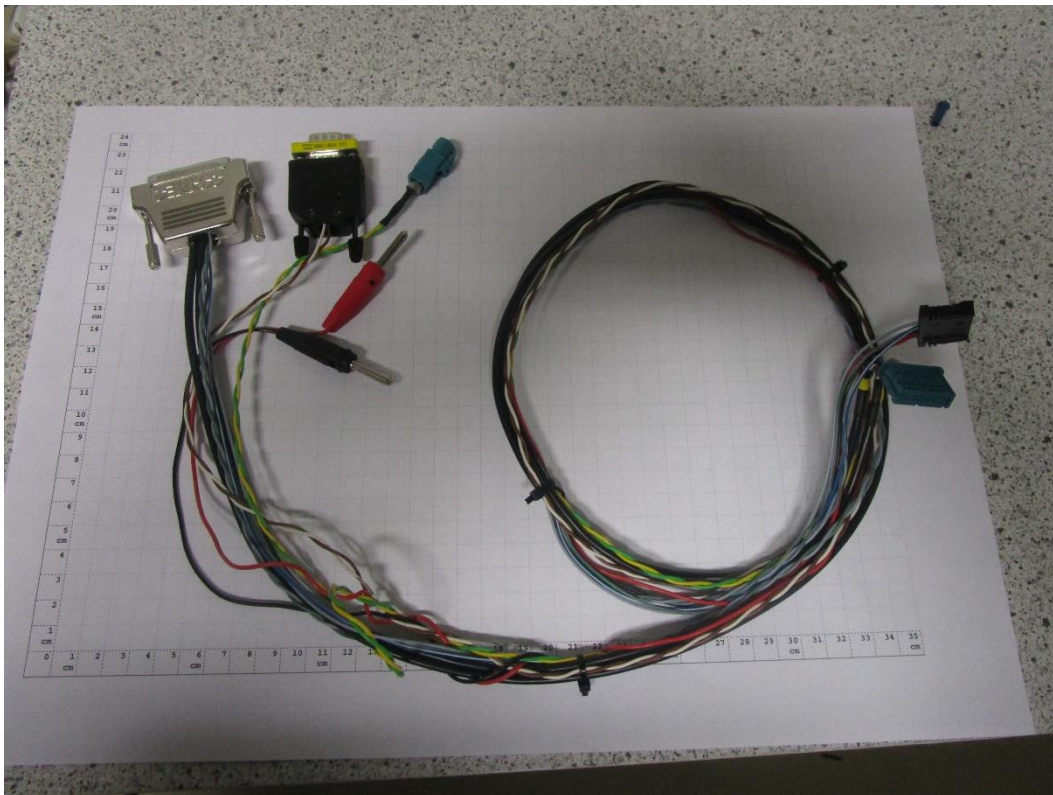
Photograph 8: Main Antenna



Photograph 9: Backup Antenna



Photograph 10: Diversity + SDARS Antenna



Photograph 11: Main wiring

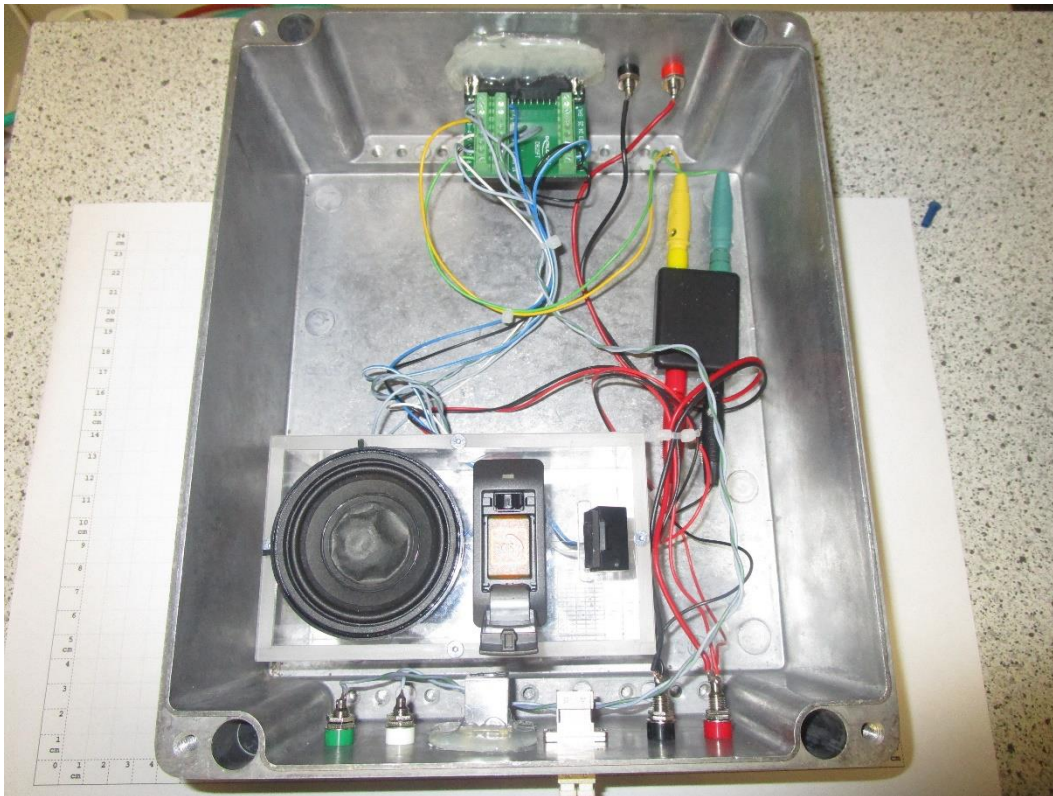




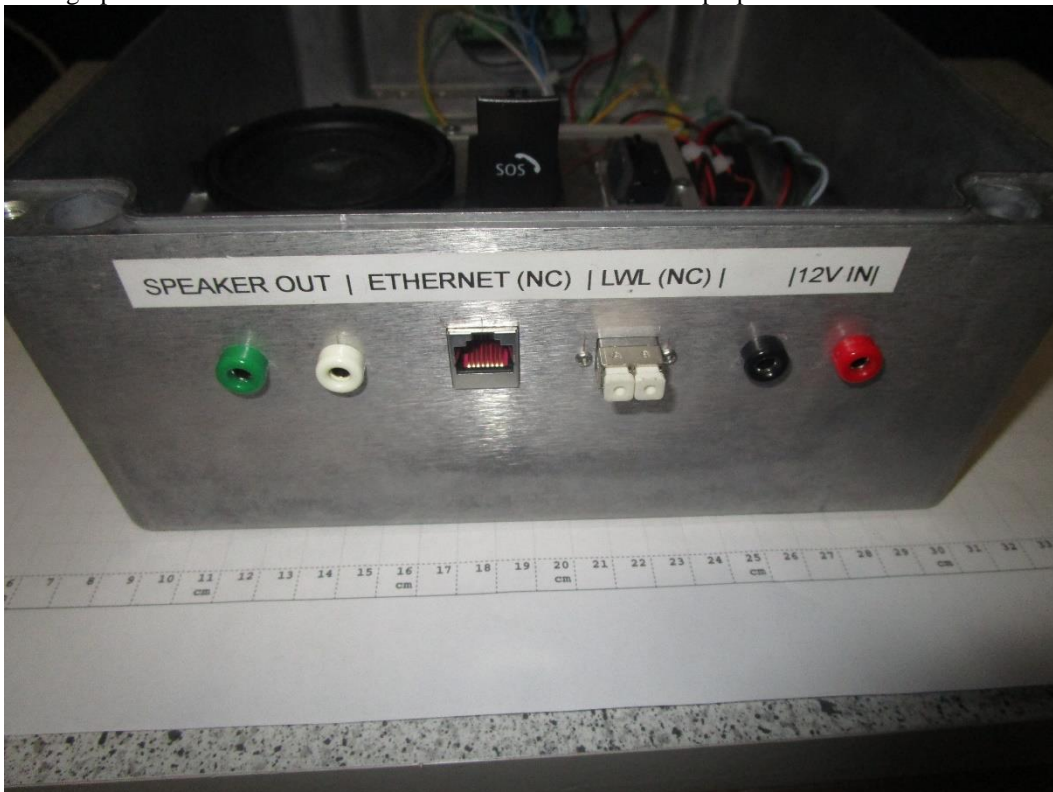
Photograph 12: connection box outside chamber



Photograph 13 Connectionbox inside chamber connected with laptop



Photograph 14 Connectionbox inside chamber connected with Laptop



Photograph 15 Connectionbox inside chamber through fibre optic cable