

Annex 3: External photographs to  
**TEST REPORT**  
 No.: 16-1-0001901T15a,  
 16-1-0001901T16a,  
 16-1-0001901T17a







According to:  
**FCC Regulations**  
 Part 22, Part 24

for

peiker acoustic GmbH

Telematic Device  
 ATM-02-ROW-R1

FCC: QWY-ATM2-R-13

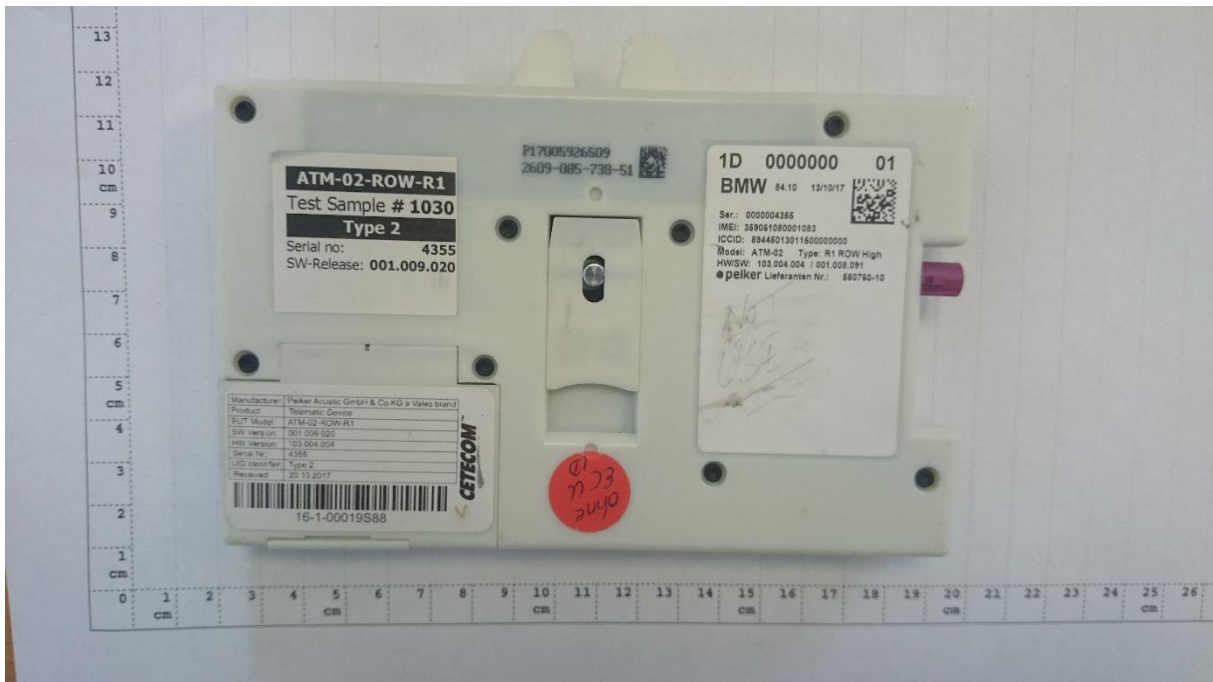
Laboratory Accreditation and Listings			
 <b>DAkKS</b> Deutsche Akkreditierungsstelle D-PL-12047-01-01	 FEDERAL COMMUNICATIONS COMMISSION <b>FCC</b> USA MRA US-EU 0003	 Industry Canada Reg. No.: 3462D-1 Reg. No.: 3462D-2 Reg. No.: 3462D-3	 Voluntary Controls for Electromagnetic Emissions Reg. No.: R-2666 C-2914, T-1967, G-301
 <b>WiFi</b> ALLIANCE AUTHORIZED RF LABORATORY	 <b>ctia</b> Authorized Test Lab Lab Code: 20011130-00		
accredited according to DIN EN ISO/IEC 17025			
<p align="center"> <b>CETECOM GmbH</b>            Laboratory Radio Communications &amp; Electromagnetic Compatibility            Im Teelbruch 116 • 45219 Essen • Germany            Registered in Essen, Germany, Reg. No.: HRB Essen 8984            Tel.: + 49 (0) 20 54 / 95 19-954 • Fax: + 49 (0) 20 54 / 95 19-964            E-mail: info@cetecom.com • Internet: www.cetecom.com         </p>			

## Table of contents

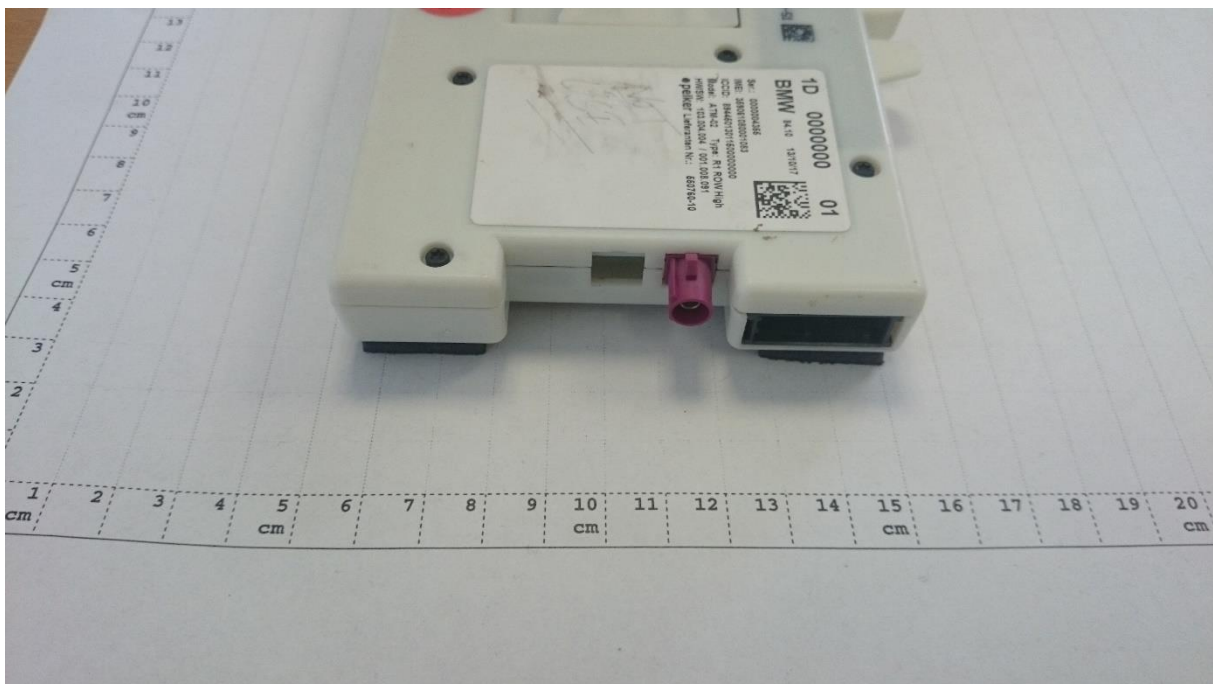
<b>1. EXTERNAL PHOTOGRAPHS.....</b>	<b>3</b>
1.1. Main device under test (EUT/DUT) .....	3
1.2. Accessories .....	7

## 1. External photographs

### 1.1. Main device under test (EUT/DUT)



Photograph 1: Front side view



Photograph 2: right side view



Photograph 3: left side view



Photograph 4: back side view



Photograph 5: under side view



Photograph 6: top side view



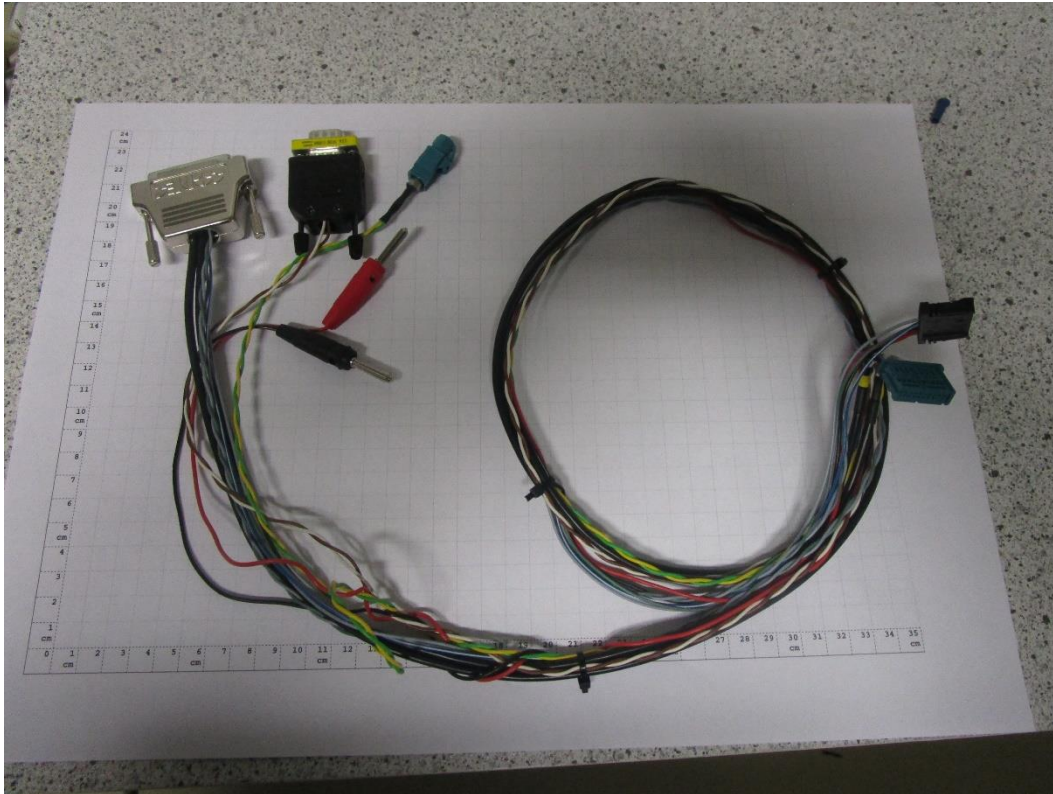


Photograph 7: Conducted Sample with external SIM CARD holder

## 1.2. Accessories

Photograph 8: Main Antenna

Photograph 9: Diversity + SDARS Antenna



Photograph 10: Main wiring

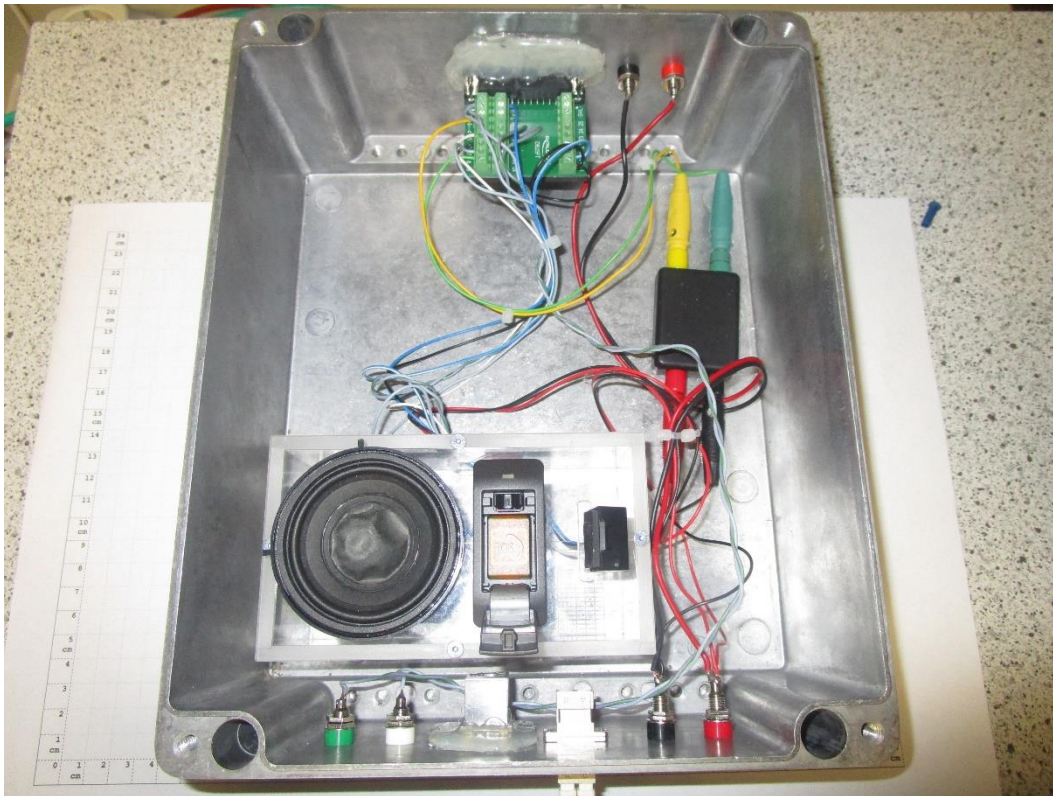


Photograph 11: connection box outside chamber



Photograph 12 Connectionbox inside chamber connected with laptop

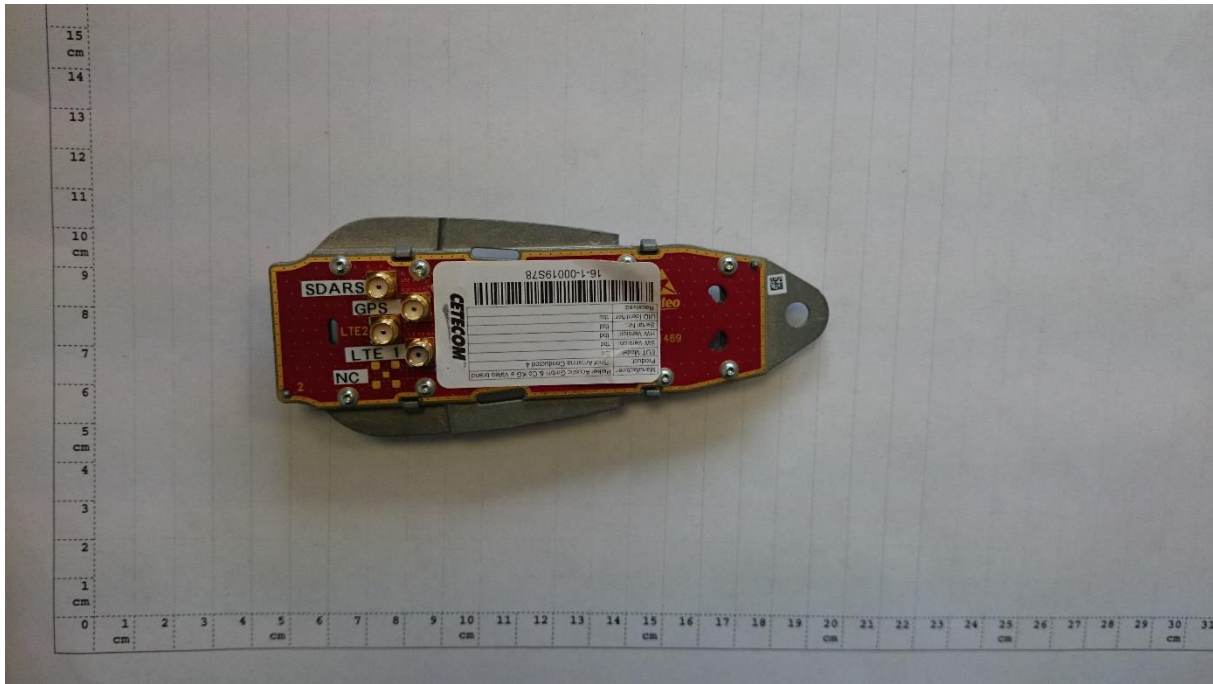




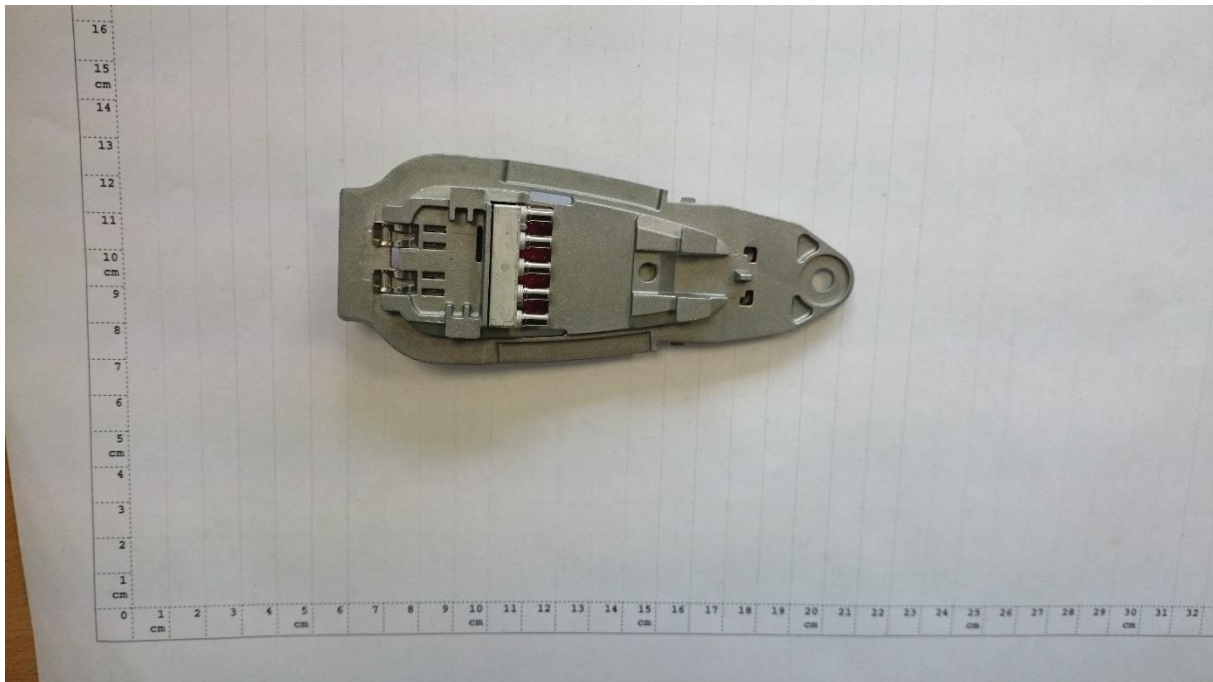
Photograph 13 Connectionbox inside chamber connected with Laptop



Photograph 14 Connectionbox inside chamber through fibre optic cable



Photograph 15 conducted roof antenna Adapter front side



Photograph 16 conducted roof antenna Adapter back side