

Annex 2: Internal photographs to
TEST REPORT
 No.: 17-1-0165401T01
 17-1-0165401T02,
 17-1-0165401T03

According to:
FCC Regulations
 Part 22, Part 24, Part 27

for
 peiker acoustic GmbH

Telematic Device
 ATM-02-MEX-R1

FCC: QWY-ATM2-R-11







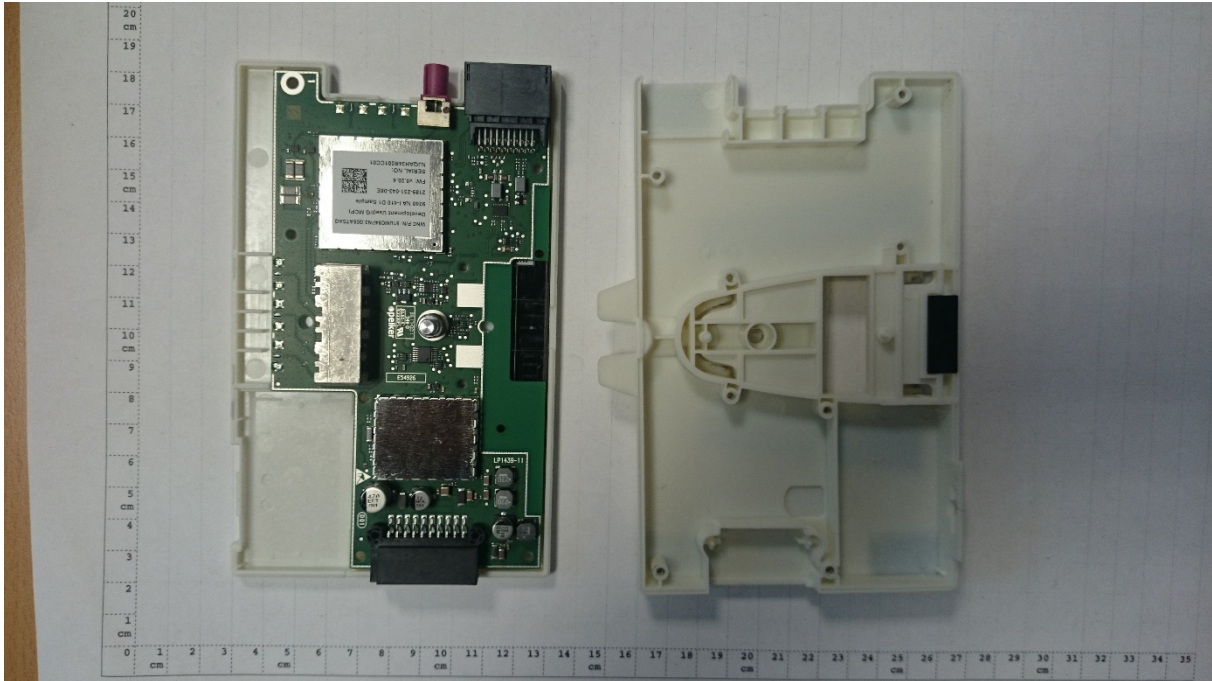
Laboratory Accreditation and Listings			
 <p>DAkkS Deutsche Akkreditierungsstelle D-PL-12047-01-01</p>	 <p>FEDERAL COMMUNICATIONS COMMISSION FCC • USA • MRA US-EU 0003</p>	 <p>Industry Canada Reg. No.: 3462D-1 Reg. No.: 3462D-2 Reg. No.: 3462D-3</p>	 <p>Voluntary Controls for Electromagnetic Emissions Reg. No.: R-2666 C-2914, T-1967, G-301</p>
 <p>WiFi ALLIANCE AUTHORIZED RF LABORATORY</p>	 <p>ctia AuthorizedTM Test Lab Lab Code: 20011130-00</p>		
accredited according to DIN EN ISO/IEC 17025			
<p align="center">CETECOM GmbH Laboratory Radio Communications & Electromagnetic Compatibility Im Teelbruch 116 • 45219 Essen • Germany Registered in Essen, Germany, Reg. No.: HRB Essen 8984 Tel.: + 49 (0) 20 54 / 95 19-954 • Fax: + 49 (0) 20 54 / 95 19-964 E-mail: info@cetecom.com • Internet: www.cetecom.com</p>			

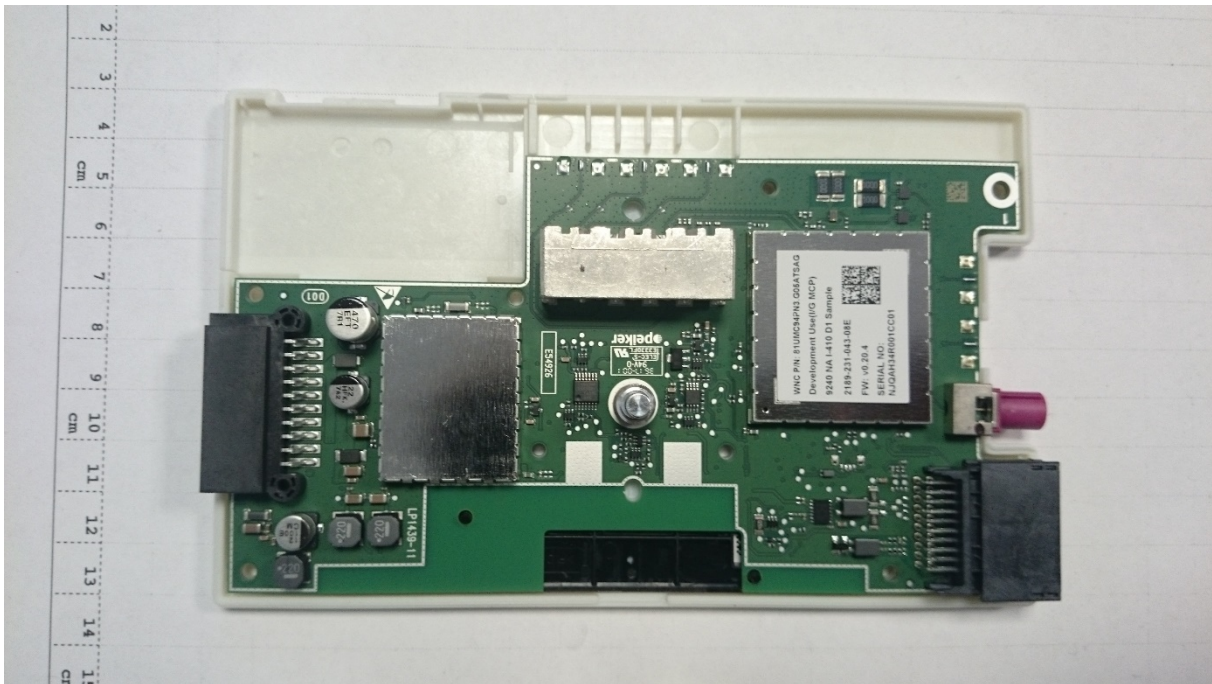
Table of contents

1. INTERNAL PHOTOGRAPHS.....3

1. Internal photographs



PCB top side with cover



PCB close view