

Annex 2: Internal photographs to  
**TEST REPORT**  
 No.: 16-1-0001901T21a  
 16-1-0001901T22a,  
 16-1-0001901T23a

According to:  
**FCC Regulations**  
 Part 22, Part 24







**IC-Regulations**  
 RSS-132 Issue 3, RSS-133 Issue 6,  
 RSS-Gen Issue 4

for

peiker acoustic GmbH

Telematic Device  
 ATM-02-US-R1

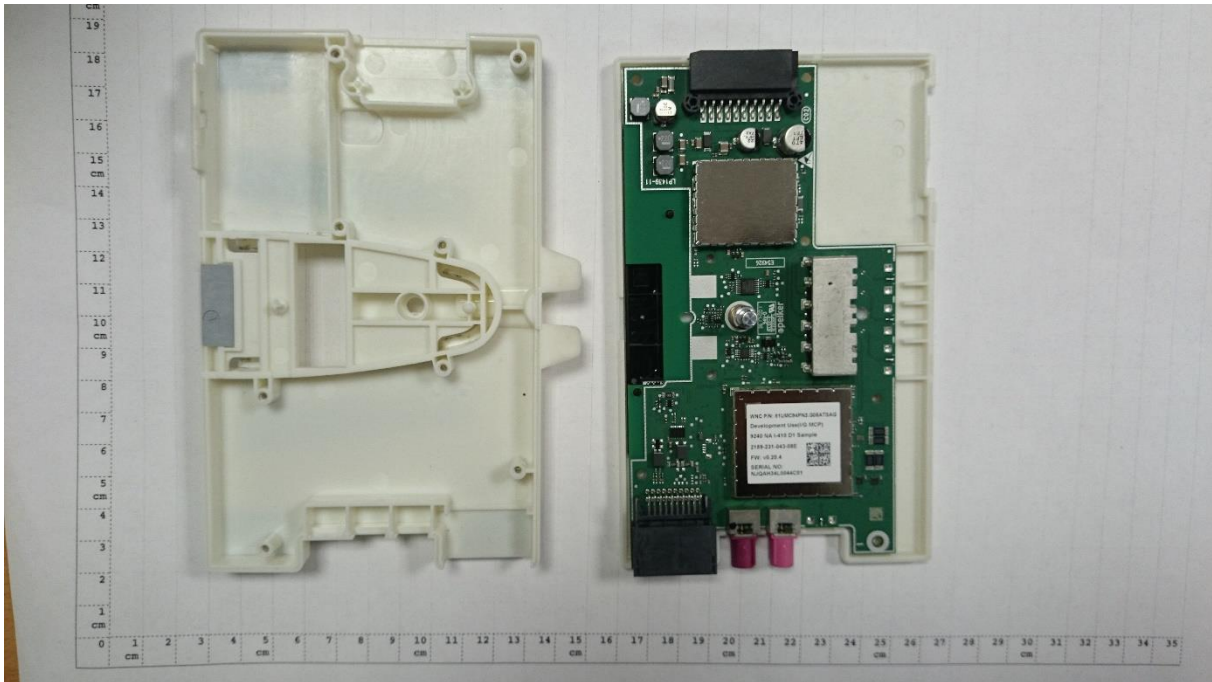
FCC: QWY-ATM2-R-11  
 ISED: 6588A-ATM2R11  
 PMN: ATM 02 Roof version  
 HVIN: ATM-02-US-R1

Laboratory Accreditation and Listings			
 Deutsche Akkreditierungsstelle D-PL-12047-01-01	 FEDERAL COMMUNICATIONS COMMISSION USA MRA US-EU 0003	 Industry Canada Reg. No.: 3462D-1 Reg. No.: 3462D-2 Reg. No.: 3462D-3	 Voluntary Controls for Electromagnetic Emissions Reg. No.: R-2666 C-2914, T-1967, G-301
 <b>WiFi</b> ALLIANCE AUTHORIZED RF LABORATORY	 <b>ctia</b> Authorized Test Lab Lab Code: 20011130-00		
accredited according to DIN EN ISO/IEC 17025			
<p align="center"><b>CETECOM GmbH</b>            Laboratory Radio Communications &amp; Electromagnetic Compatibility            Im Teelbruch 116 • 45219 Essen • Germany            Registered in Essen, Germany, Reg. No.: HRB Essen 8984            Tel.: + 49 (0) 20 54 / 95 19-954 • Fax: + 49 (0) 20 54 / 95 19-964            E-mail: info@cetecom.com • Internet: www.cetecom.com</p>			

## **Table of contents**

**1. INTERNAL PHOTOGRAPHS.....3**

## 1. Internal photographs



PCB top side with cover



PCB close view