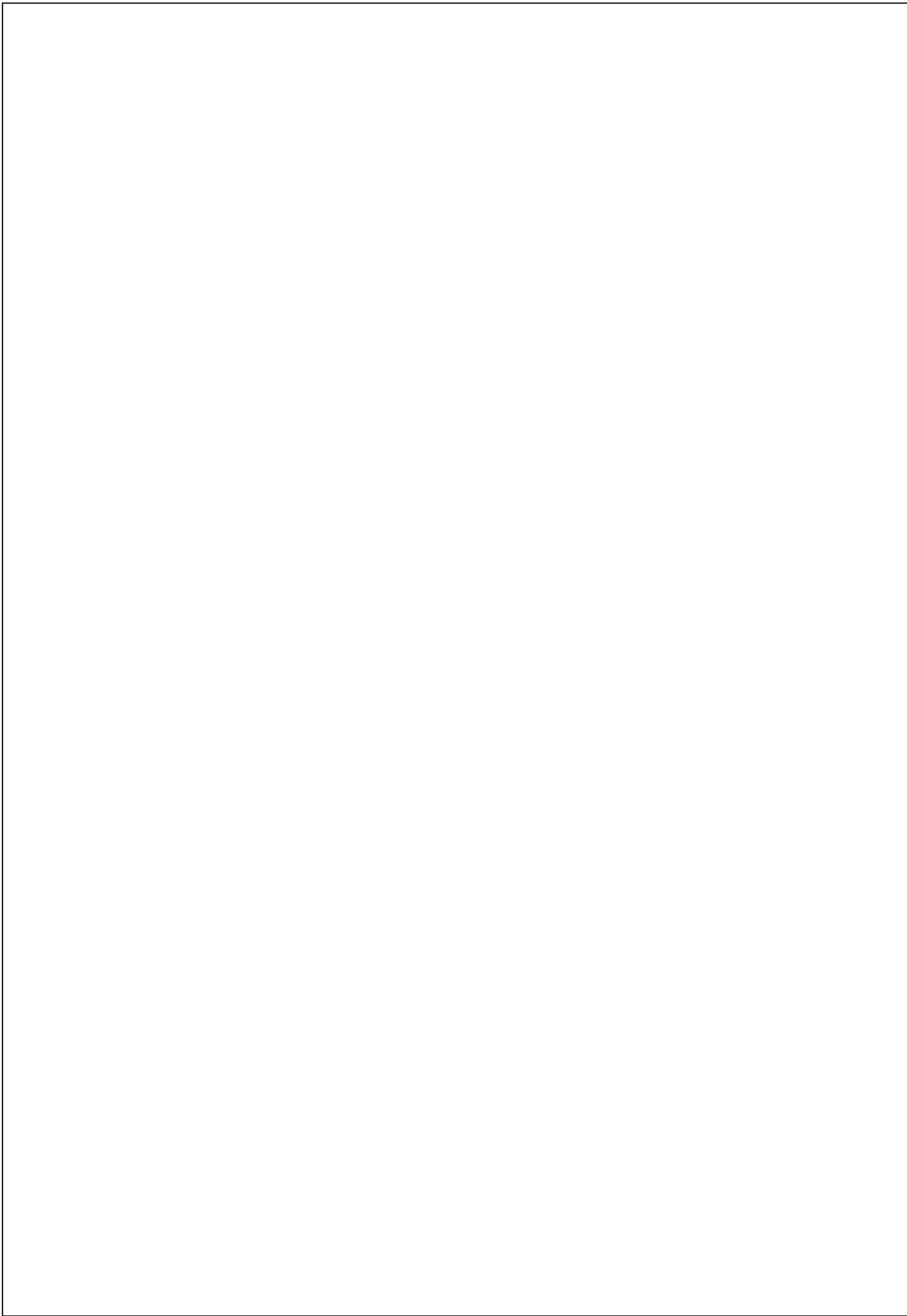


# **PPT-180 Series**

## **Portable Data Terminal**

### **User Manual**





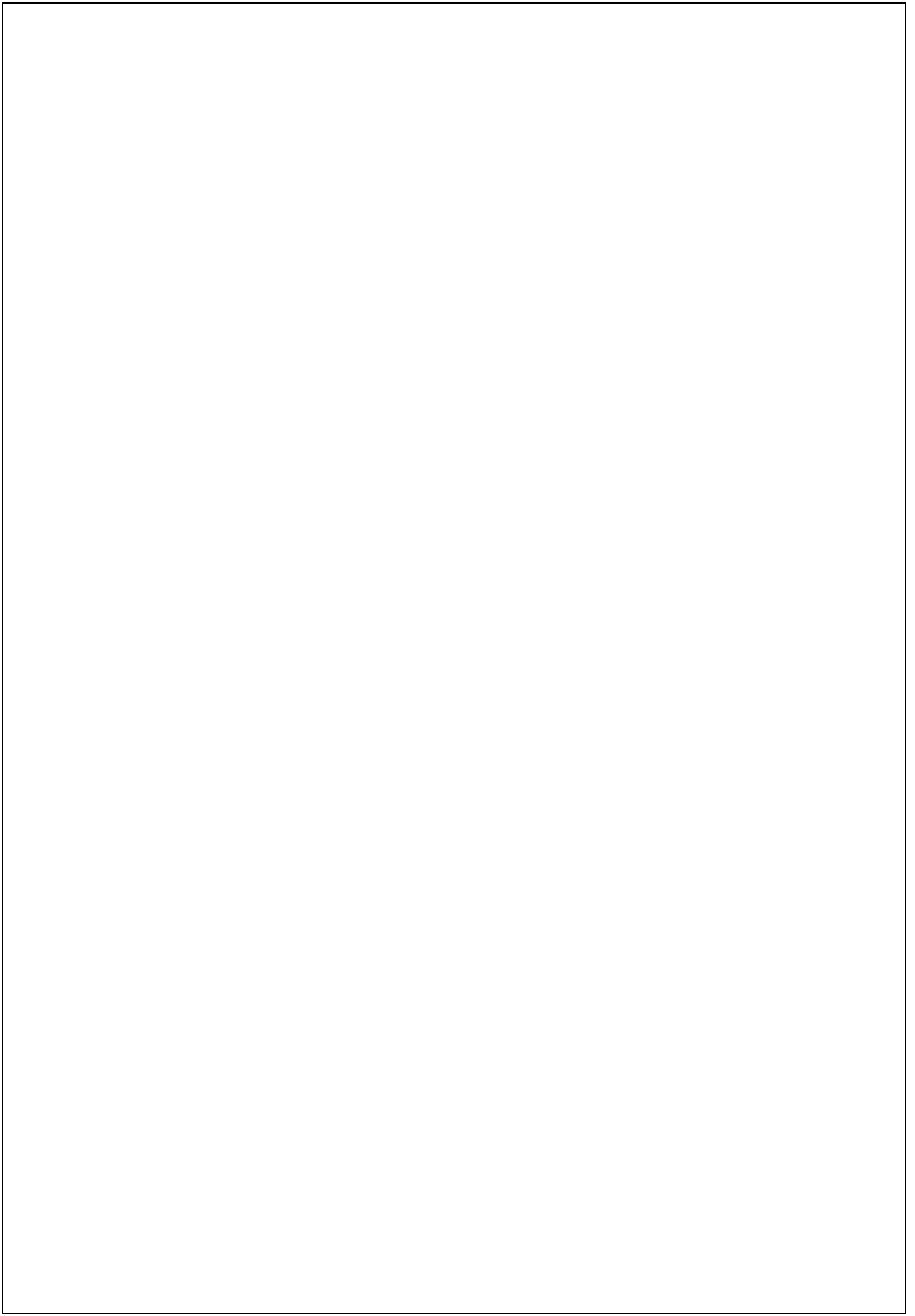
**Notice:**

This equipment has been tested and found to comply with the limits for a Class B Digital Device, pursuant to part 15 of the FCC Rules. These limits are designed to provide reasonable protection against harmful interference in a residential installation. This equipment generates uses and can radiate radio frequency energy and, if not installed and used in accordance with the instruction, may cause harmful interference to radio communication. However, there is no grantee that interference will not occur in a particular installation. If this equipment dose causes harmful interference to radio or television reception, which can be determined by turning the equipment off and on, the user is encouraged to try to correct the interference by one or more of the following measures:

- Reorient or relocate the receiving antenna.
- Increase the separation between the equipment and receiver.
- Connect the equipment into an outlet on a circuit different from that to which the receiver is connected.
- Consult the dealer or an experienced radio/TV technician for help.

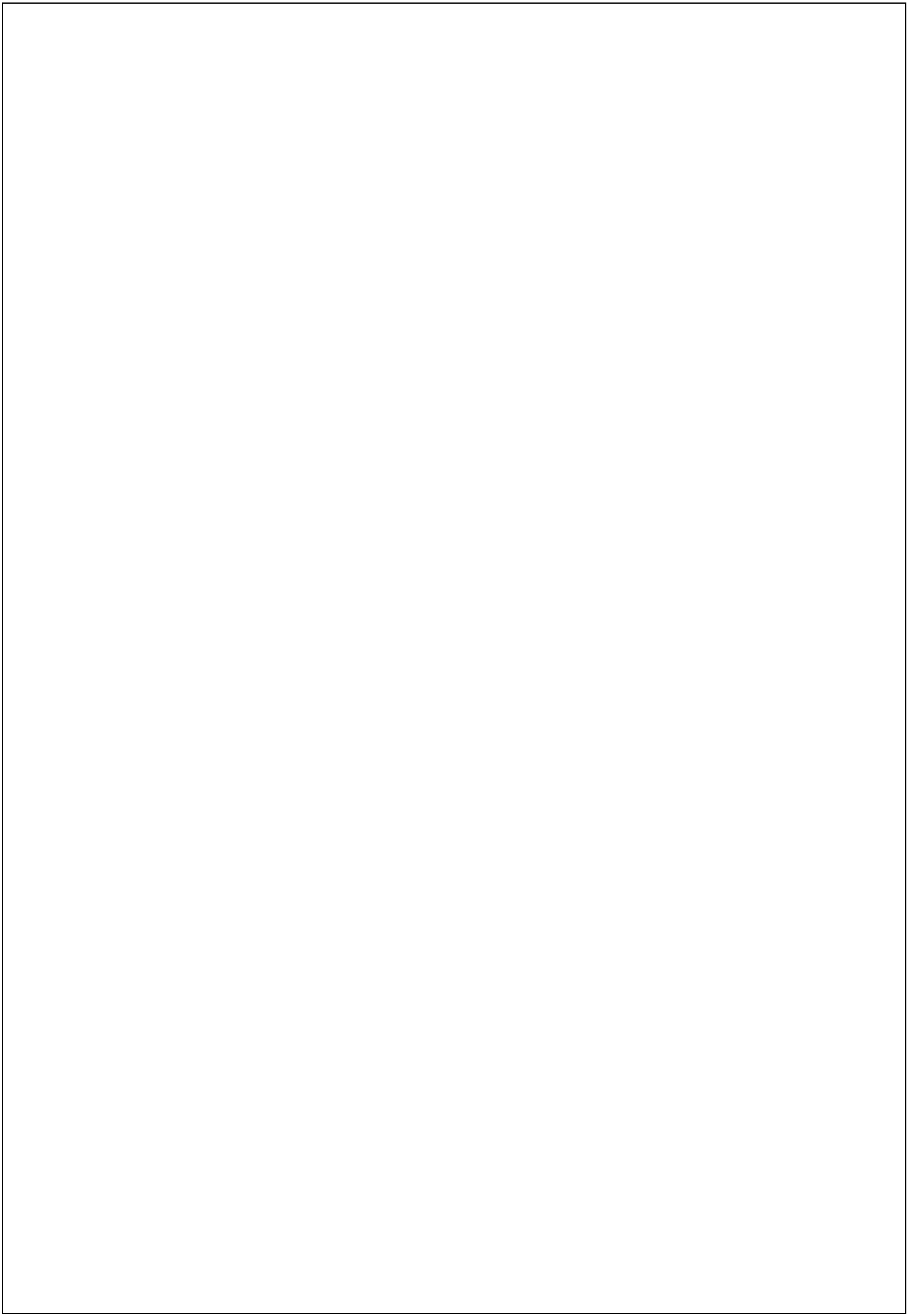
The changes or modifications not expressly approved by the party responsible for compliance could void the user's authority to operate the equipment.

To comply with the FCC RF exposure compliance requirements, this device and its antenna must not be co-located or operating to conjunction with any other antenna or transmitter.



## **- Contents -**

1. Safety precautions.....	1
2. Specifications .....	2
3. List of included items.....	3
4. Exterior .....	4
5. Operation.....	7
5.1 To charge and change battery .....	7
5.2 System reset .....	8
5.3 Use and care of the touch panel .....	8
5.4 Internal data storage space (Flash memory) .....	9
5.5 Microsoft ActiveSync software .....	9
6. System Tools .....	10
6.1 PC Connection.....	10
6.2 Bluetooth (optional).....	11
6.3 SCAN Engine .....	12
6.4 WiFi (optional).....	13
6.5 Screen Backlight .....	14
6.6 KeyPad Backlight.....	15
6.7 Function Key .....	15
6.8 Volume .....	16
6.9 System .....	16
6.10 Backup and Restore .....	17
6.11 User Setting .....	17



## **1. Safety precautions**

For your safety, please read the following:

- (1) Please use only the accessories from the original manufacturer. Use of any accessories not provided by the manufacturer may damage the device and invalidate the product warranty.
- (2) Do not place the device in environments that exceed the specified temperature or humidity limits. Doing so may result in damage to the device and invalidate the product warranty.
- (3) Please keep all I/O ports covered when not in use to prevent water, dirt, metal or other objects from entering the device and causing damage.
- (4) Do not disassemble or modify the device, in order to prevent damage to the unit or electrical shock. Any disassembly or modification of the device automatically invalidates the product warranty.

## 2. Specifications

OS	Windows CE.NET 5.0 (Compact Framework 2.0)
CPU	Intel PXA255 400MHz
RAM	64 MB
Flash	On board: 256 MB (180 MB available) Expend: SD memory card
LCD	2.8" TFT, SVGA 240*320
Touch Screen	4 wire resistive
Barcode reader	1D Laser
Wireless	WLAN (Optional): 802.11b/g Bluetooth (Optional): Class II
Power (Adapter)	AC Input: 100~240V, 50~60Hz DC Output: 6V, 2A
Power (Battery)	Lithium Ion, 3.7V, 2200 mAH
Dimensions	185*75*35 mm
Weight	370g (includes battery)
Operating temperature	0 °C ~ + 50 °C
Storage temperature	-20 °C ~ + 70 °C
Relative humidity	0 % ~ 80 % (without condensation)
Ingress protection	IP54
Drop specification	1.2m drop to concrete



### 3. List of included items

Upon opening the packaging, please check that the following items are included:



(1)



(2)



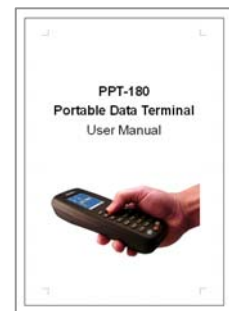
(3)



(4)



(5)



(6)

- (1) PPT-180 portable data terminal with stylus
- (2) Main Battery
- (3) Power adaptor
- (4) USB active sync cable
- (5) Stylus strap
- (6) User manual


## 4. Exterior



1. Internal microphone
2. 2.8" TFT color LCD with touch panel, resolution: 240\*320 pixels
3. Alphanumeric keys

These keys are used to enter numbers and letters. Every key can be used together with the Alpha ( **A** ) or Function ( **F** ) key to allow a different mode of data entry, refer to table below:

Key	Normal mode	Alpha mode	Function Mode
SCAN	Trigger barcode scanning	Trigger barcode scanning	Not definable
ESC	Esc key	Esc key	Not definable
←	Backspace key	Backspace key	Not definable
→	Tab key	Tab key	Not definable
↵	Enter key	Enter key	Not definable
▲	Up arrow key	Up arrow key	Not definable
▼	Down arrow key	Down arrow key	Not definable
◀	Left arrow key	Left arrow key	Not definable
▶	Right arrow key	Right arrow key	Not definable
1	Numeral " 1 "	Caps lock change	F1 (Programmable)
2	Numeral " 2 "	Rotates through letters A, B, C	F2 (Programmable)
3	Numeral " 3 "	Rotates through letters D, E, F	F3 (Programmable)
4	Numeral " 4 "	Rotates through letters G, H, I	F4 (Programmable)
5	Numeral " 5 "	Rotates through letters J, K, L	F5 (Programmable)
6	Numeral " 6 "	Rotates through letters M, N, O	F6 (Programmable)
7	Numeral " 7 "	Rotates through letters P, Q, R, S	F7 (Programmable)

8	Numerical " 8 "	Rotates through letters T, U, V	F8 (Programmable)
9	Numerical " 9 "	Rotates through letters W, X, Y, Z	F9 (Programmable)
0	Numerical " 0 "	Rotates through symbols =, #, @, \$	Soft Keyboard (Programmable)
	Space key	Rotates through symbols +, -, *, /	Not definable
▪	Symbol " ▪ "	Rotates through symbols , , " , % , ? , :	Not definable

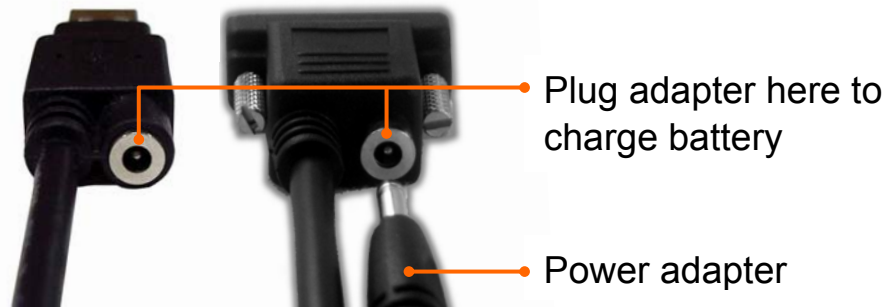
4. Power button: To turn off the device (to enter suspend mode) or turn it on.
5. Barcode reading indicator:
  - (1) Unlit: Currently not scanning barcode
  - (2) Red: During the barcode engine is scanning barcode
  - (3) Green: When a barcode is successfully scanned
6. Charging status indicator:
  - (1) Unlit: Currently not charging
  - (2) Red: Charging battery
  - (3) Green: Battery fully charged
7. Stylus
8. Internal speaker
9. System reset button
10. Main Battery
11. SD slot: Supports SD/MMC memory cards, up to 2GBytes.
12. Barcode scanner window: Location of barcode scanner

**Caution:** *This window emits a beam of laser light. During use, do not point directly into anyone's eyes to avoid causing injury.*

13. Earphone jack: Ø2.5mm, 3 poles, for external stereo earphone.

14. Multipurpose communication port for:

- (1) USB client: Use the USB cable included to link the device to a PC for data synchronization, software installation, etc.
- (2) RS-232: Use the RS-232 cable (optional) to support standard RS-232 functions.
- (3) Battery charging: Both the USB and RS-232 cables can be used to charge the battery when the power adapter is plugged.



## 5. Operation

### 5.1 To charge and change battery

- (1) When shipped from the factory, the battery is minimally charged. Please charge the battery over 8 hours before first time used, or when the device is not used for extended periods to make sure the backup battery inside is fully charged.
- (2) When battery power is nearly depleted, a popup window will warn user to recharge the battery. Failure to recharge the battery before power is completely depleted may result in loss of data saved on the device.
- (3) Please turn off the power (to enter suspend mode) before changing the battery.

**Caution:** *If the device will not be used for extended periods, please remove the battery to prolong battery life.*

## 5.2 System reset

If an application causes the device to hang, the system reset function can return the terminal to normal operating status.

This terminal features two types of reset:

### (1) Warm reset

Use the stylus to lightly press the reset button on the back of the device. Warm reset will not delete data saved on the device.

### (2) Cold reset

**Caution:** *When doing a cold reset, all data stored in the RAM will be deleted, and the terminal will be restored to factory defaults. It is recommended to save all data before performing the cold reset, and to backup data regularly.*

The cold reset is performed as follows:

- (A) Press and hold the 'ESC' and "←" (Backspace) key together.
- (B) Using the stylus to lightly press the reset button on the back of the device.

## 5.3 Use and care of the touch panel

- (1) Do not place any objects on the panel.
- (2) Use only the provided stylus on the touch panel. Do not use your finger or any other pointed objects to avoid damaging the panel.
- (3) Wipe the touch panel with a smooth, clean, anti-static cloth. Mild household cleaner or water can also be used if needed. Do not use alcohol or other industrial strength cleaning fluids.
- (4) Do not pour water directly onto the panel. Cleaning should be done only with a damp cloth, in order to avoid damaging the device.

## 5.4 Internal data storage space (Flash memory)

A limited storage space for user to save data can be found in “My Device > Flash”. Data saved in this folder remains after run out of the battery.

For data exceeds this storage space can be saved in SD memory card.



Flash

## 5.5 Microsoft ActiveSync software

Please download the latest version of Microsoft ActiveSync software from Microsoft website as following:

<http://www.microsoft.com/windowsmobile/en-us/help/synchronize/default.aspx>



How-tos for Synchronizing Your Phone With Your PC | Smartphone and PDA - Windows Internet Explorer

http://www.microsoft.com/windowsmobile/en-us/help/synchronize/default.aspx

Click Here to Install Silverlight

Windows Mobile

Home Meet Windows Mobile Choose Your Phone Use Your Phone Make It Yours Total Access


### Synchronizing

Tips, tricks, help, and how-to


While replacing a lost or stolen phone may not be fun, it's a task that can be accomplished relatively easily. Replacing the e-mail, contact information, pictures, and music that were stored on that phone can prove to be an impossible task if you haven't synchronized your phone with your PC on a regular basis. "Synchronizing" quickly and easily transfers your contacts, e-mail, calendar and other files between your mobile device and your PC.

Before synchronizing, it's important to know [which version of Windows your PC is running](#). Your synchronization settings will be managed through ActiveSync if you have Windows XP or earlier; Windows Mobile Device Center if you have Vista.


### Using ActiveSync



**Download Active Sync 4.5**  
Read about supported features and system requirements, and select the language you'd like to download.  
[Download >](#)




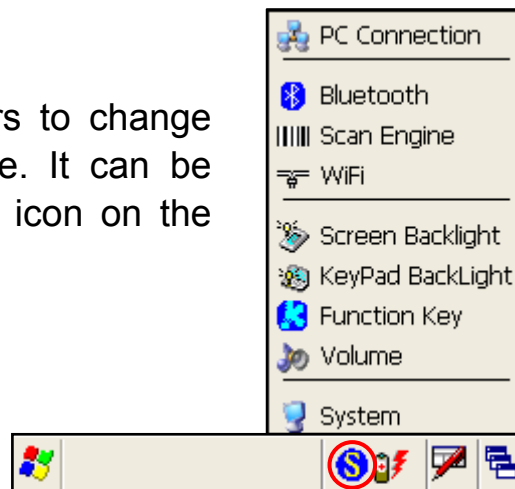
**Step-by-step instructions**  
The four steps you need to take to synchronize your phone and your PC using ActiveSync.  
[Learn more >](#)



**Troubleshooting Guide**  
Solve issues related to firewalls, various utilities, and Outlook synchronization.  
[Learn more >](#)

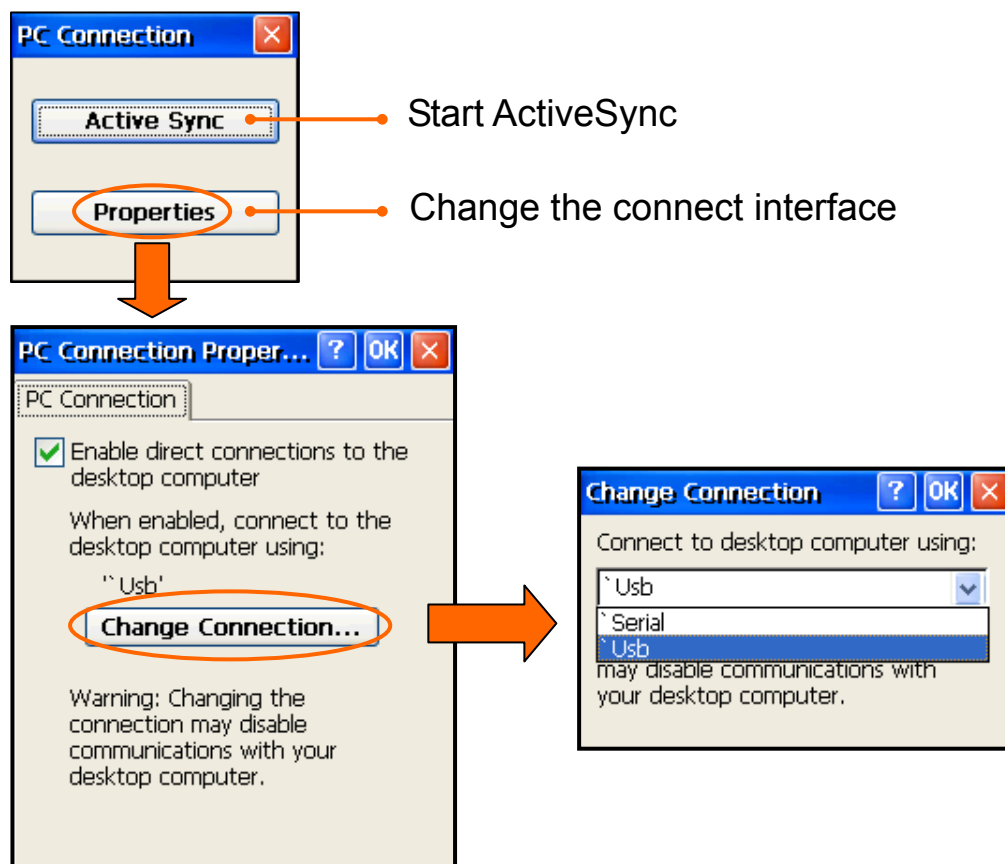
## 6. System Tools

System tools provide users to change the settings on this device. It can be opened when click the  icon on the tool bar.



### 6.1 PC Connection

Use ActiveSync to synchronize data between device and PC.



**Caution:** *ActiveSync will automatic start up when using USB interface only, if using the other interface, it is necessary to start up ActiveSync manually.*

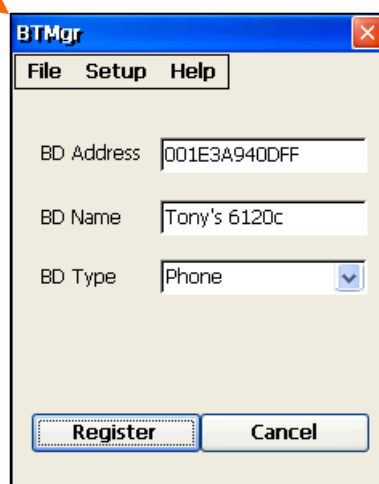
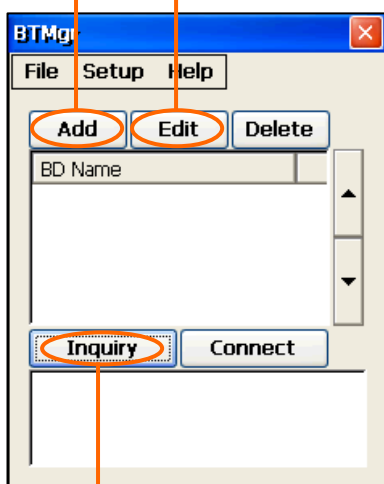


## 6.2 Bluetooth (optional)

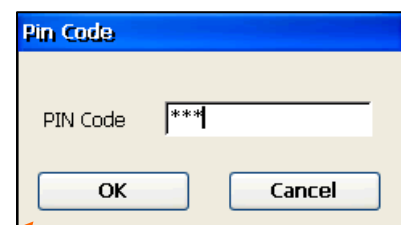
- (1) This function only active on the specified models that feature with a Bluetooth module.
- (2) Click ON/OFF to turn on/off the internal Bluetooth module function.
- (3) When Bluetooth function is on, a Bluetooth icon will show on the tool bar.
- (4) Click Bluetooth icon to open the BTMgr (Bluetooth management).



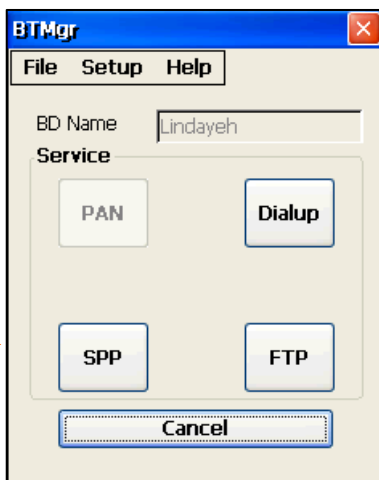
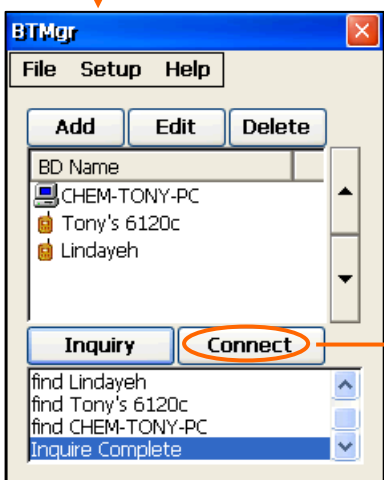
Add or edit BD (Bluetooth Device) information by manually



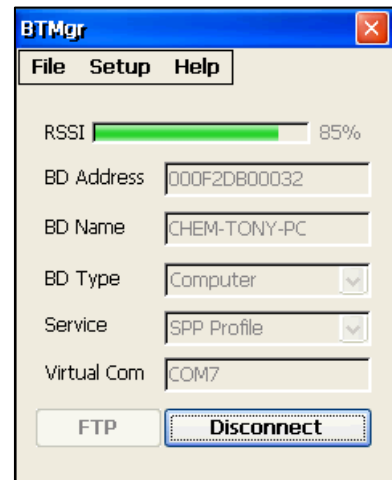
Input PIN code if necessary



Auto find and register BD in range



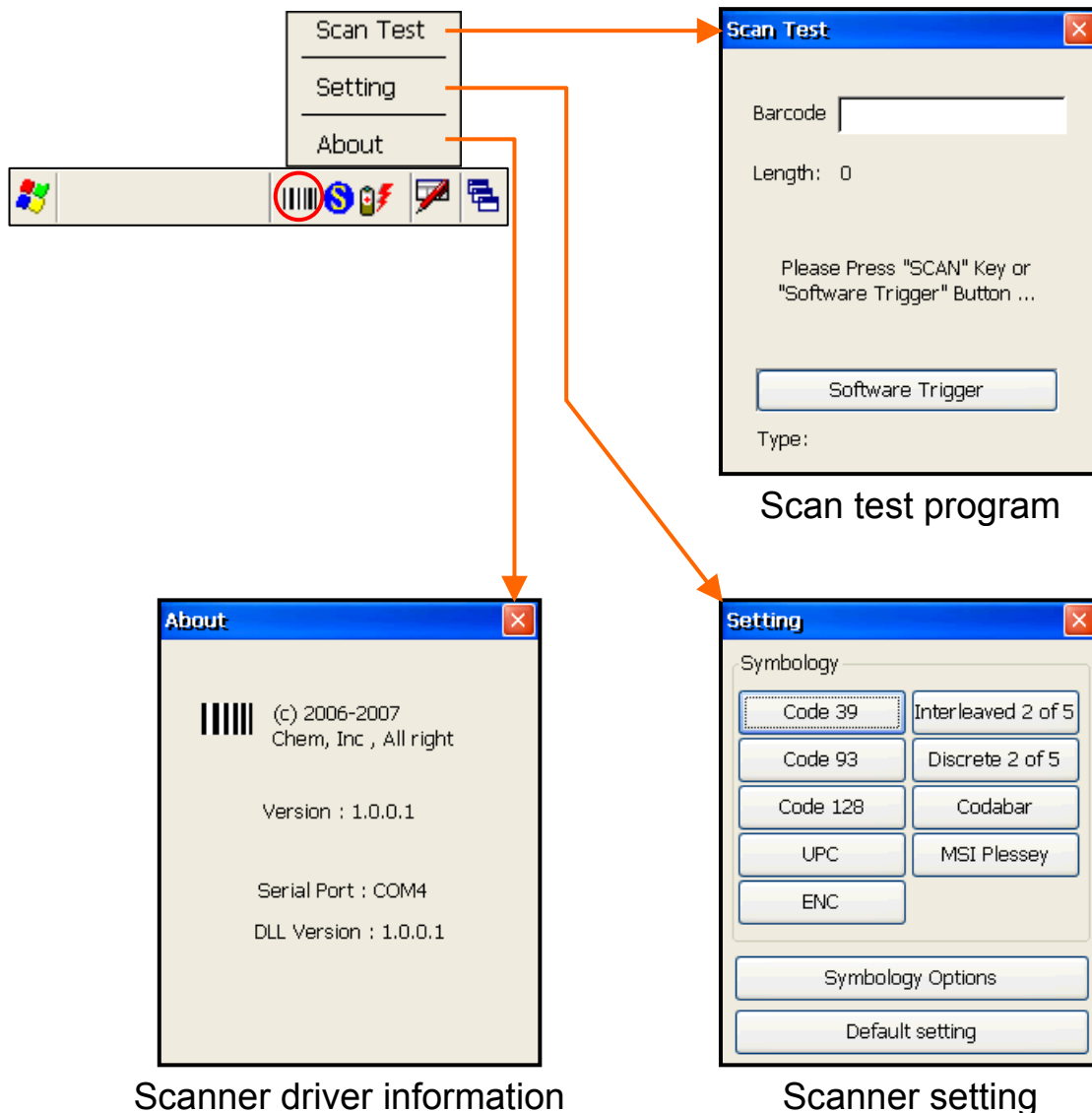
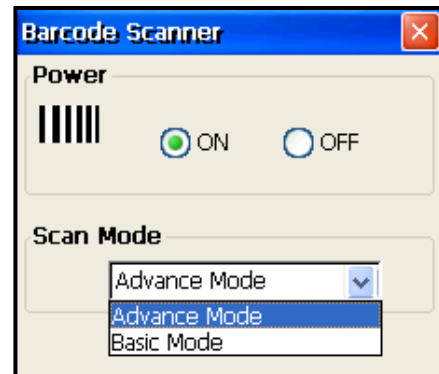
Select connection profile



Connected

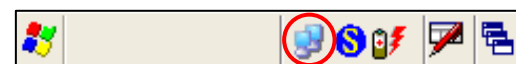
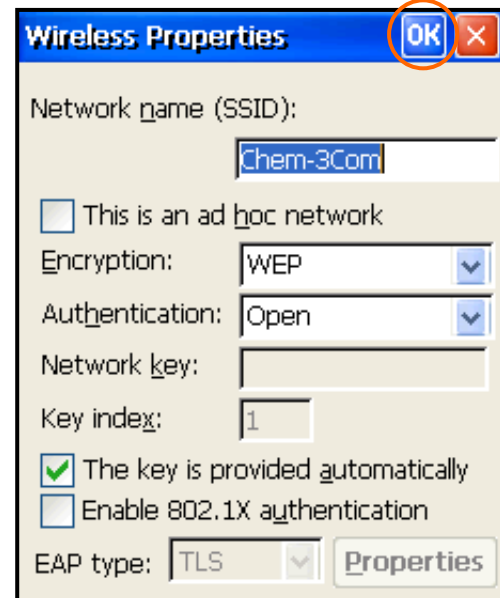
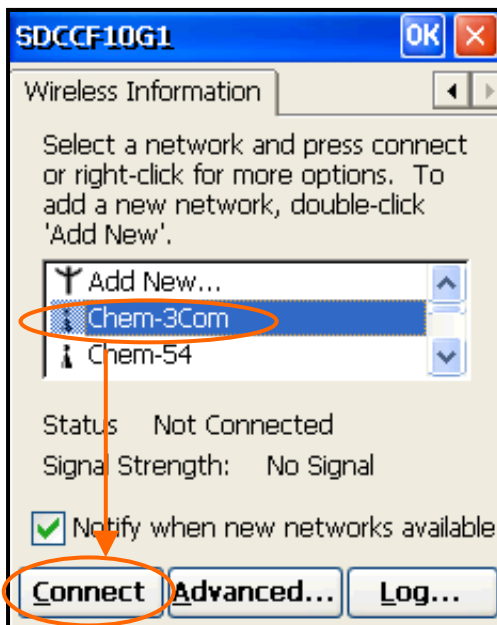
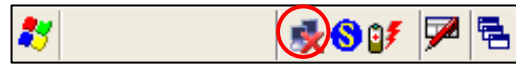
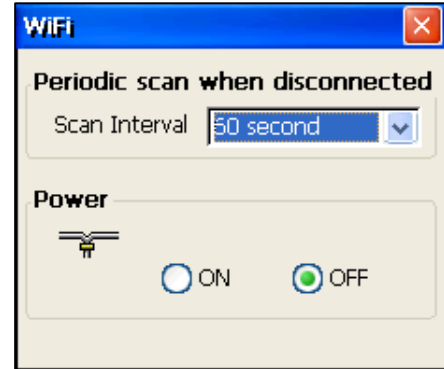
## 6.3 SCAN Engine

- (1) Click ON/OFF to turn on/off the internal barcode scanner.
- (2) When barcode scanner is on, a barcode icon will show on the tool bar.
- (3) Scan modes setting:  
Advance Mode: Scanner can be triggered only on EDIT cursor.  
Basic Mode: Scanner can be triggered always.
- (4) Click barcode icon to open the scanner menu:



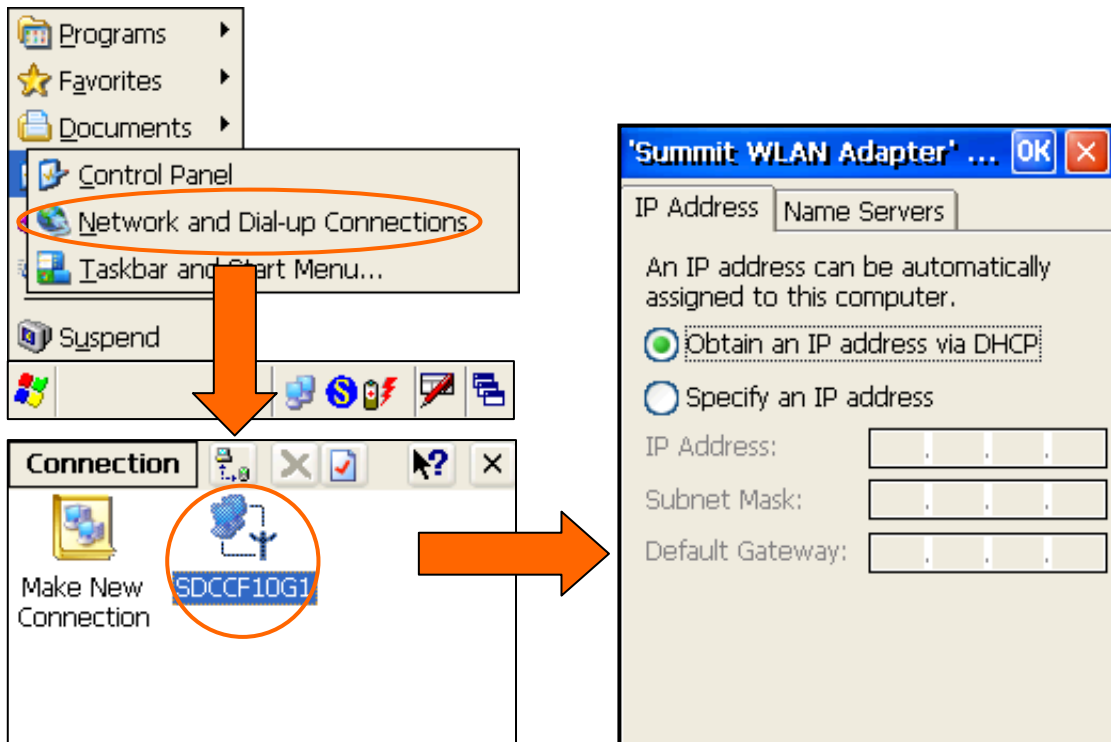
## 6.4 WiFi (optional)

- (1) This function only active on the specified models that feature with a WLAN module.
- (2) Click ON/OFF to turn on/off the internal WLAN module function.
- (3) Scan interval setting may change the refresh network time after network disconnected.
- (4) When WLAN function is on, a network icon will show on the tool bar.
- (5) Click network icon to open the WLAN management.
- (6) Select the desired network and click "Connect". Enter the necessary parameters as required and click "OK".



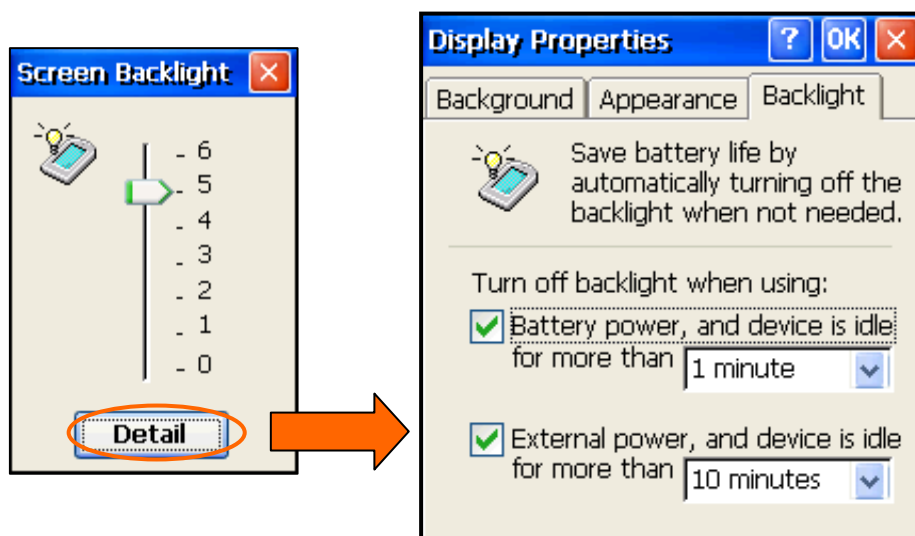
- (7) When WLAN connecting succeeds, the network icon status on the tool bar will appear connected.

- (8) According to network environment requirement to define settings for TCP/IP, DNS and other parameters (refer to the “Network and Dial-up Connections” in Start -> Settings or Control Panel).



## 6.5 Screen Backlight

- (1) Move the cursor to desired screen backlight level.
- (2) Click “Detail” button to change the setting to automatically turn off the screen backlight if needed.



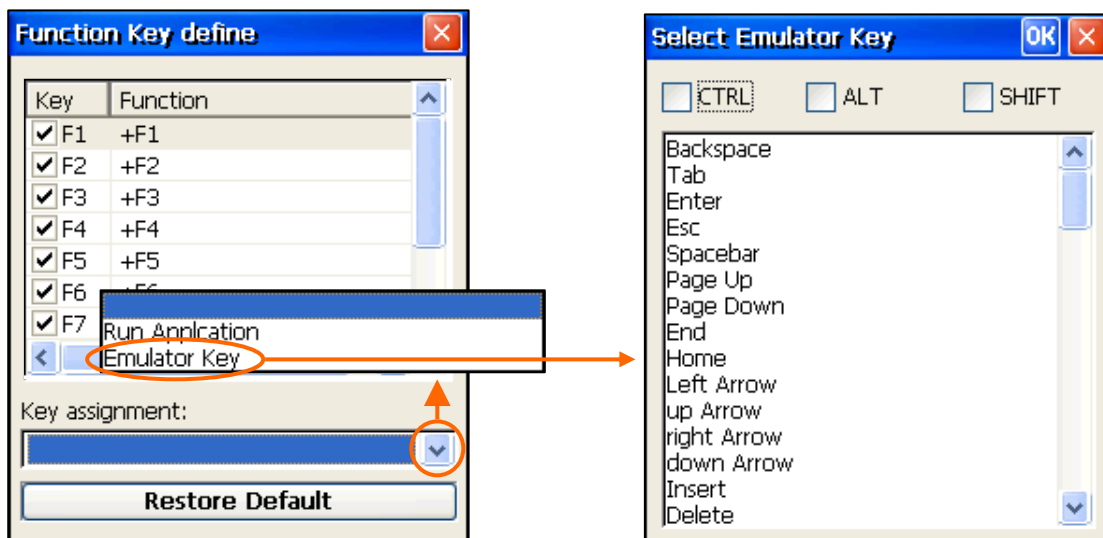
## 6.6 KeyPad Backlight

- (1) Click ON/OFF to turn on/off the keypad backlight.
- (2) If keypad backlight is turn on, it will automatically light when press any key, and unlit after 3 seconds.



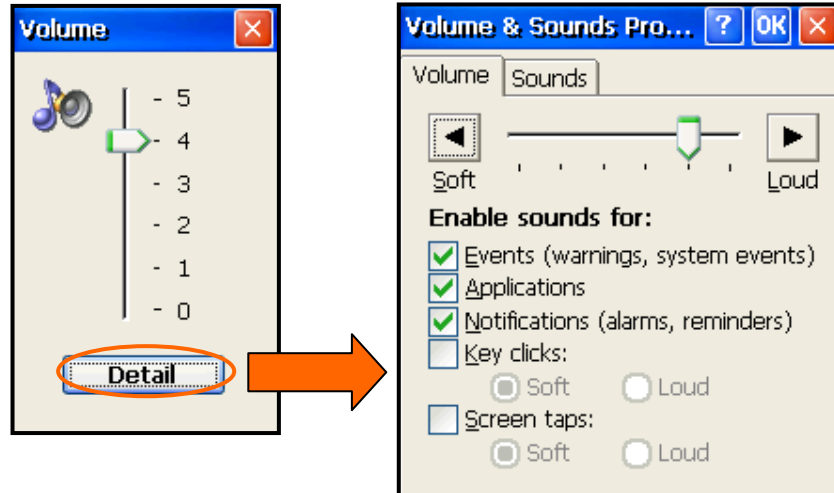
## 6.7 Function Key

- (1) There are 10 programmable function keys.
- (2) Each key can be defined to run an application or emulator.
- (3) Click "Restore Default" button will set all function keys back to factory defaults.



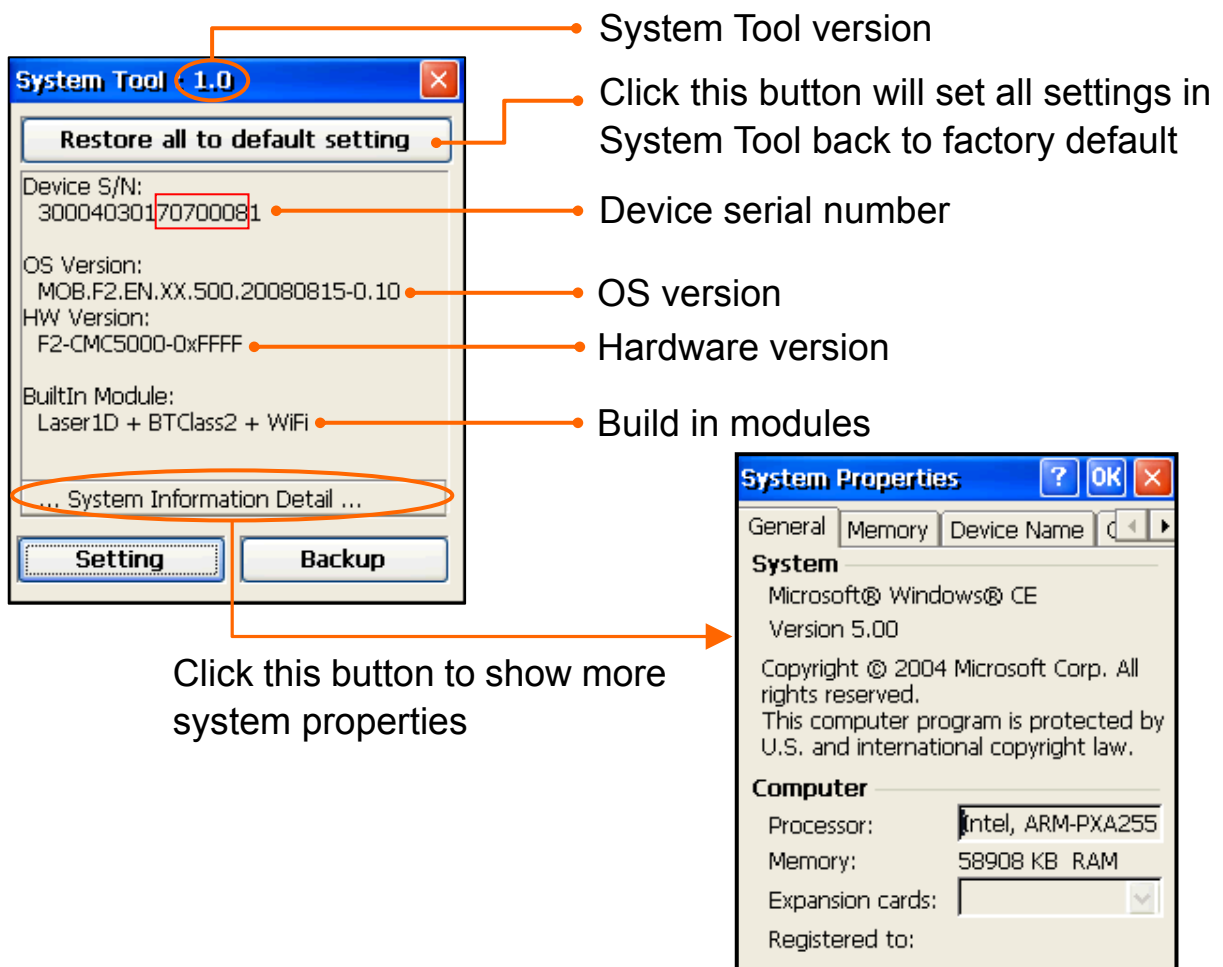
## 6.8 Volume

- (1) Move the cursor to desired volume level.
- (2) Click "Detail" button to change other parameters if needed.



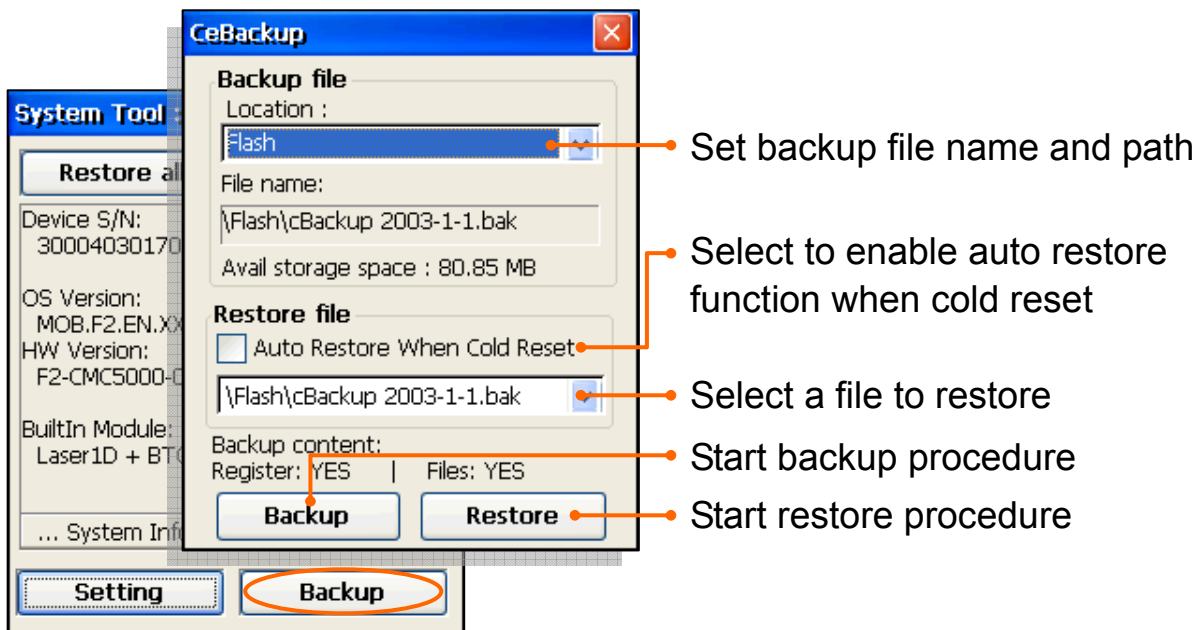
## 6.9 System

This page shows system information as:



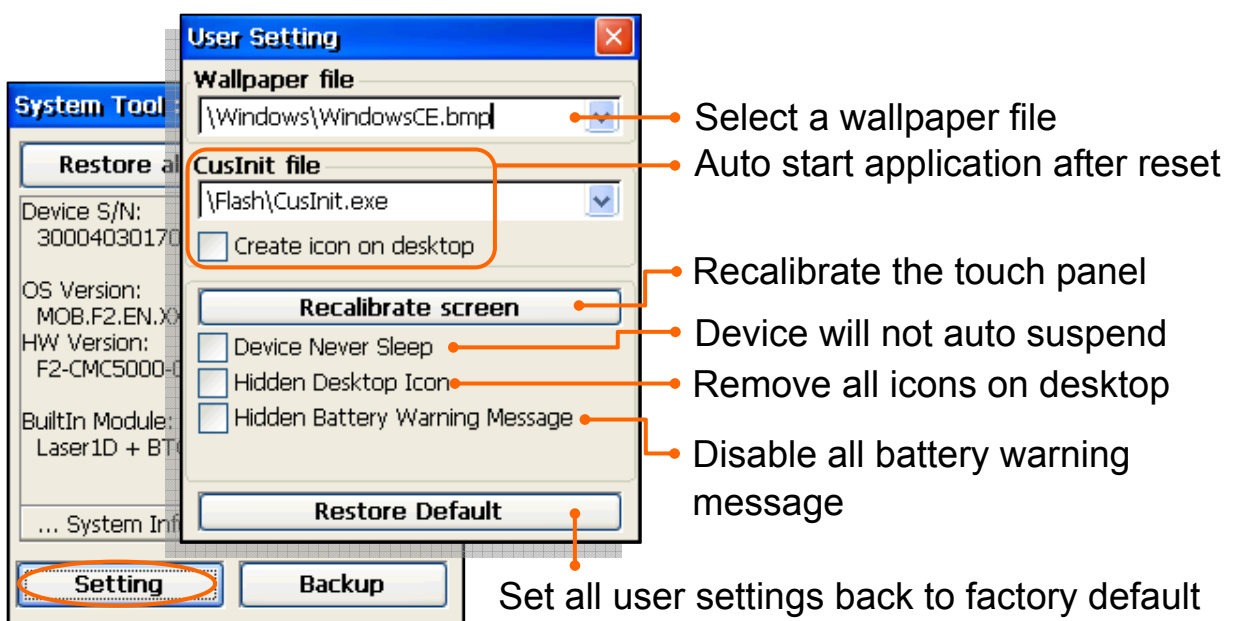
## 6.10 Backup and Restore

- (1) Click “Backup” button at System information page to open this Backup and Restore application.
- (2) All files and system register on the RAM will be saved and restored.



## 6.11 User Setting

Click “Setting” button at System information to open this page.



**2507F200001A**  
**(081015)**