

Wireless Broadband Router

Model No. MW-P150MS 

User Guide

MW-P150MS

Please install on the PC
which must be connected
with internet.

Contents

Introduction	3
Windy31 Characteristics	
Scenario I/II	
1. Features and configuration	5
1.1 Features	
1.2 Configuration	
1.3 Product Description	
1.4 Installation Requirements	
1.5 Structure Diagram of Windy31	
2. Installation Windy31-11n	7
2.1 before Installation	
2.2 Windows 7	
2.3 Windows VISTA	
2.4 Windows XP	
3. How to used Windy31-11n	13
3.1 Windy31 Manager Setting	
3.2 Wireless LAN Adapter Setting	
4. Optional Configuration	18
4.1 Wireless LAN connection in Windows VISTA	
4.2 Wireless LAN connection in Windows XP	
4.3 Directly input IP Address	
5. Trouble Shooting	23

Introduction

- ◆ The USB-type wireless portable gateway that combines a Wireless Router, Access Point(AP)and Wireless LAN Adapter all in one!
- ◆ All three of these functions allow the user to truly experience wireless freedom, as well as the convenience of portability.
- ◆ Because of its small size, users can virtually carry it wherever they go.
- ◆ Conveniently be plugged right into your PC, PDA, or laptop's USB port

3-in-1 Wireless Broadband Router

1. Wireless Broadband Router

The Windy31 is highly portable and user friendly, allowing the host to easily connect other surrounding Wi-Fi enabled products, such as laptops, PDAs, and Wi-Fi phones to the internet without the hassle of wires.

2. Wireless LAN Adapter

The Windy31 can conveniently be plugged right into your computer, PDA, or laptop's USB port. You can walk into any café, library, office, school, airport, or any other place that provides wireless internet service, and let the auto-run installation program do the rest.

3. Wireless Access Point (WAP)

The WINDY31 can wirelessly network up to 32 different clients together by being plugged into a single host computer. Manage all your local networks, easily share documents, and best of all, go wireless!

WINDY31 Characteristics

- ◆ Auto-installation without a CD
- ◆ Easy mode-changing from LAN/AP/Router
- ◆ Convenient User-Interface
- ◆ Windows Vista/7 Compatible!

Scenario I

◆ If you want to access the internet in a public area such as a Seminar, Trade Show, Library, Hotel, or Airport:

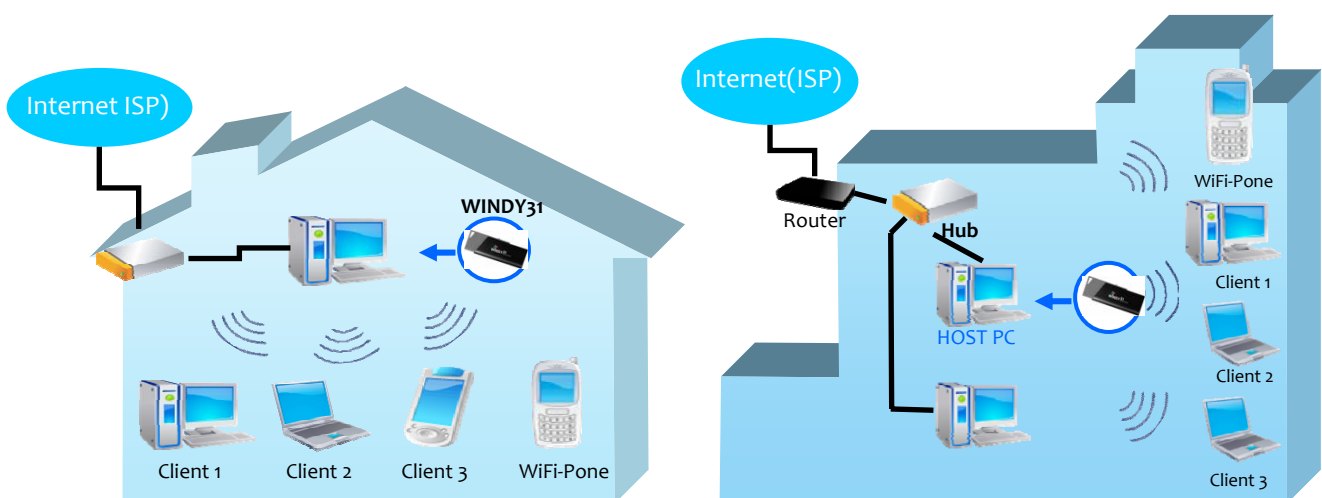
- **Existing** : Only a wireless internet service subscriber can use the internet
- **Windy31** : Plug the Windy31 into any computer that is connected to the internet, and you can use the internet service through your laptop

Scenario II

◆ If you want to share your internet connection with friends or co-workers without paying for each additional line at a wireless service provided from Airport, Hotel, Conference room, Trade show, etc.

- **Existing** : No choice for non-subscribers. You have to pay for each user.
- **Windy31** : Plug the Windy31 into the subscriber's computer and share the connection with friends and co-workers at no additional cost.

Windy31 typical Configuration(At Home or Office)



1. Features and configuration

1.1 Features

◆ Convenient to use anywhere and anytime

- Portable, slim and compact design to fit in one hand (USB memory stick size)
- The only thing required is internet connected computer, easy and fast internet connection sharing

◆ Fast installation and easy setting

- Connect Windy31 into computer for auto installation of driver and utility programs (Separate installation CD and driver not necessary)
- Easy GUI-type setting screen

◆ Speed

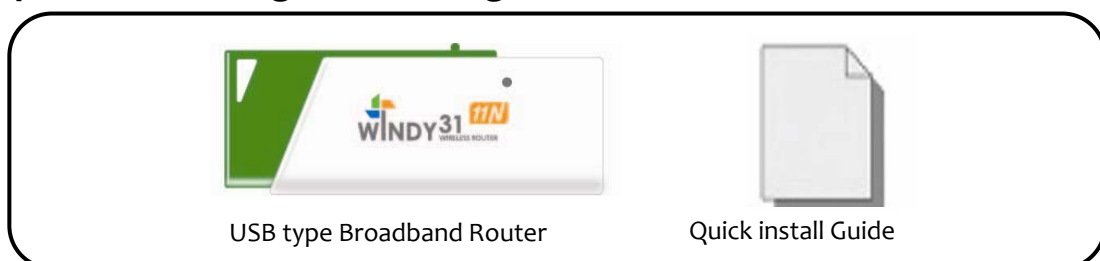
- Support Wireless 802.11b(11Mbps) speed
- 802.11g(54Mbps) speed
- 802.11n(Max.150Mbps) speed

◆ Security

- Access control with WEP(64,128 bit) / WPA-PSK / WPA2-PSK(AES) and MAC address

1.2 Configuration

- ◆ Please check Windy31 product configurations as shown below. Please contact the seller you purchased from immediately if contents of product is damaged or missing.



1.3 Product Description



1.4 Installation Requirements

◆ Before installing Windy31, Please check whether your computer configuration matches the requirements shown below.

- Intel Pentium IV or above
- 512M bytes system memory or above
- Windows XP/VISTA/7 Operating Systems (Support auto-installation for Windows XP or above)
- USB 1.1 or USB 2.0
- Requires more than 30M bytes of usable hard disk space

1.5 Configuration



2. Installation Windy31

2.1 Usage Precautions

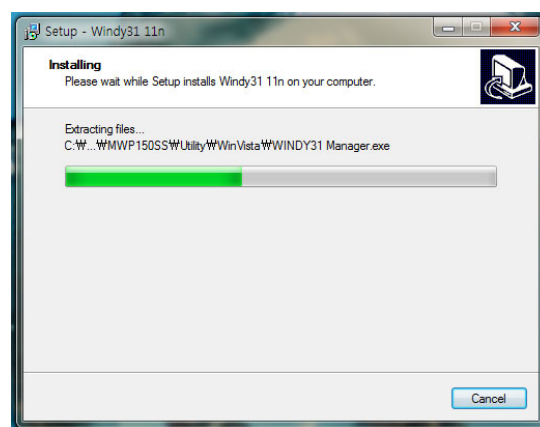
◆ Checklist before installing

1. Please be sure that Windy31 must be inserted to a computer which is connected to Internet.
2. Computer to be installed with Windy31 must have more than one LAN Adapter.
3. Please check your computer for Virus and Spyware, before installation. Some Viruses and Spywares may interfere with automatic installation of Windy31 driver and utility programs

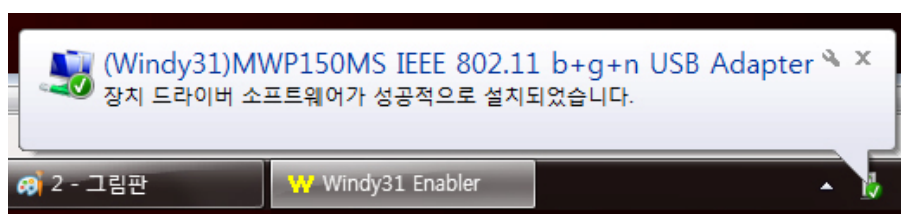
2.2 Windows 7

◆ Installation

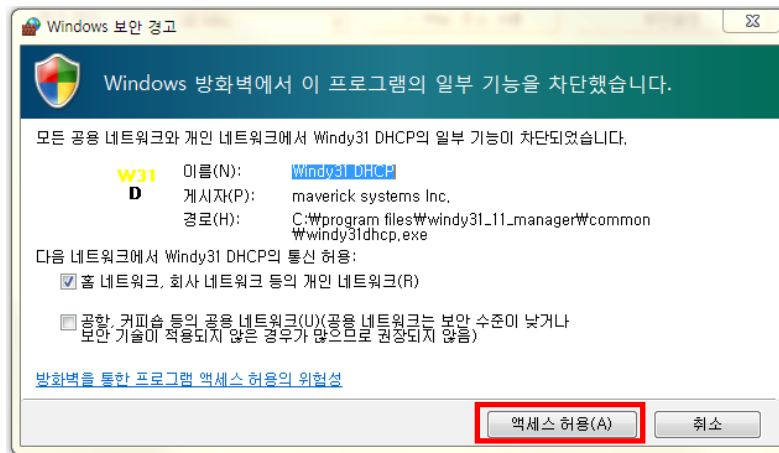
- 1) Insert Windy31 into USB port of Laptop or Desktop PC and program will automatically run as shown below.



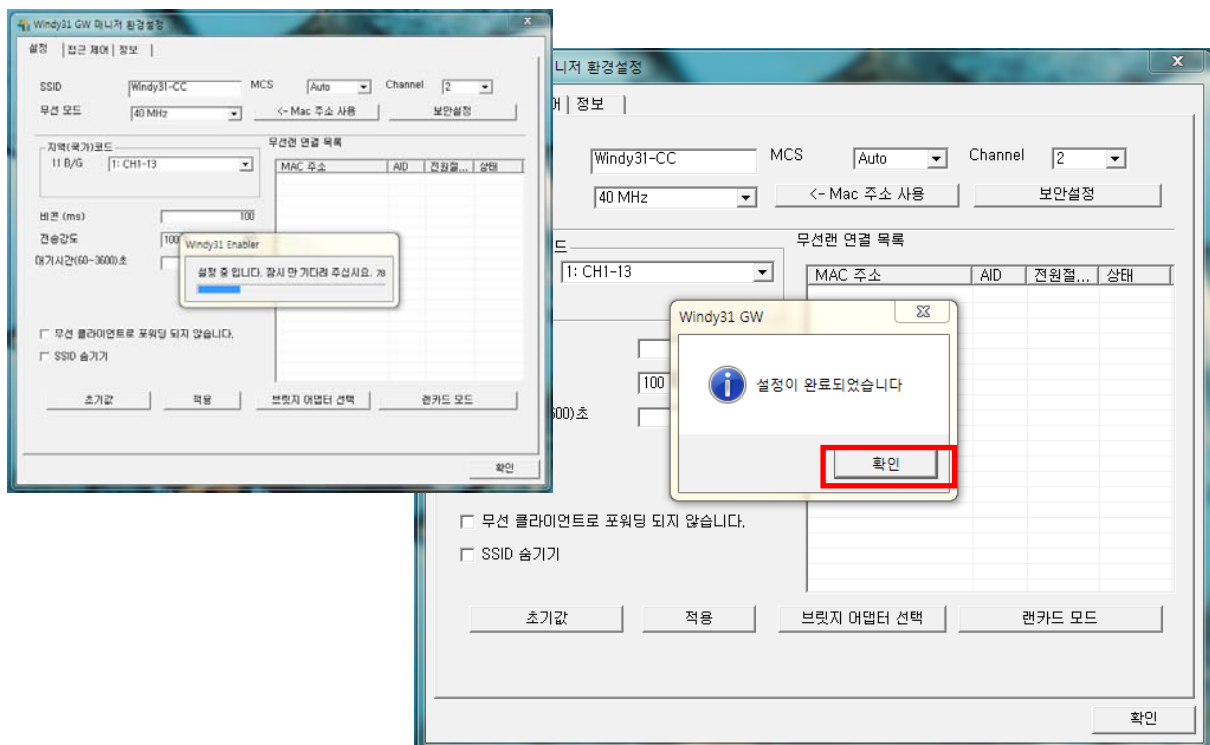
- 2) After program installation, the following screen will appear one after another in the right-side of Windows Task bar, showing that the USB device acknowledges and is installing Windy31.



During installation, Windows Security Alert may display “Keep blocking” & “Unlock” pop-up for security, please select the button “Unlock”. (If you select “Keep blocking” blocked, then there will be no network connection.)



2) Please wait until “Windy31 Gateway Manager” window appears, “Windy31 setting in progress” and “setting complete” windows are displayed as shown below. This process will take some minutes as it is installing the Windy31 Gateway.(Installation time may differ according to computer configuration)



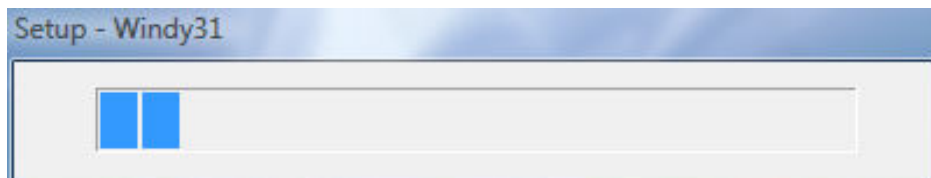
3) In Step 3, After “Program has been successfully installed“ appears, click “OK”. Then, Windy31 has completed installation.

Connection method may differ according to Wireless LAN device, please refer to Wireless LAN usage method. (For wireless device usage method, please refer to wireless device product manual or please contact the provider.)

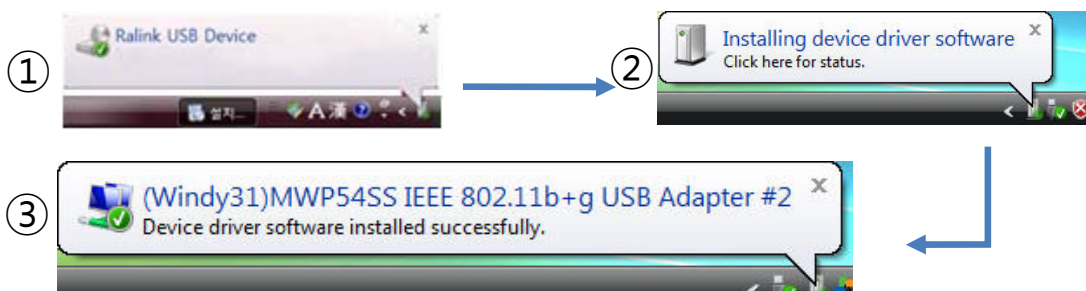
2.3 Windows VISTA

◆ Installation

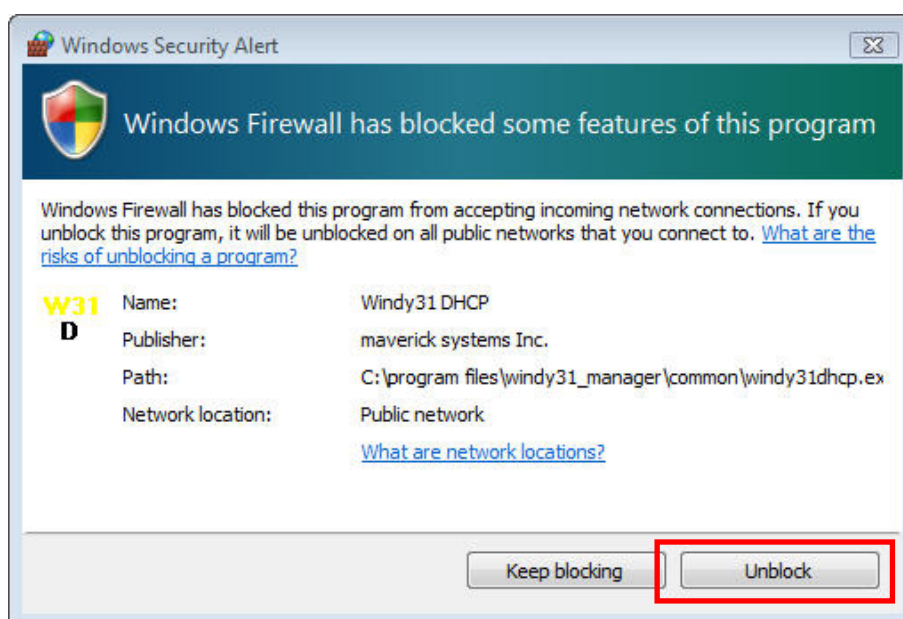
- 1) Insert Windy31 into USB port of Laptop or Desktop PC and program will automatically run as shown below



- 2) After program installation, the following screen will appear one after another in the right-side of Windows Task bar, showing that the USB device acknowledges and is installing Windy31.

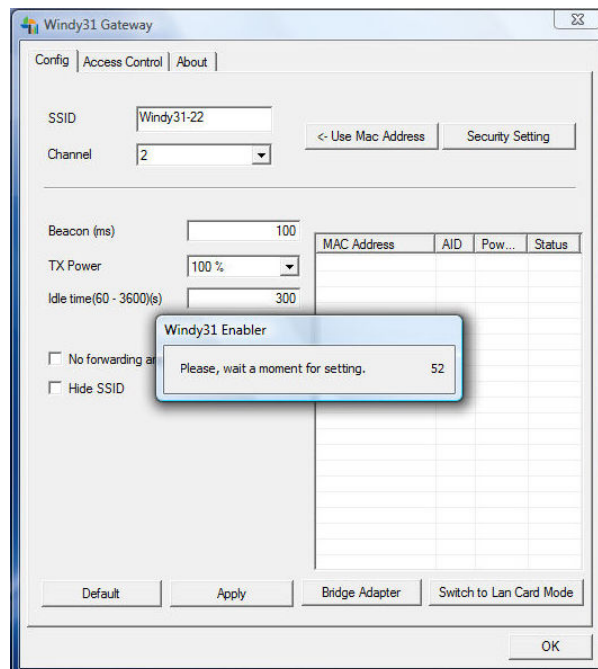


During installation, Windows Security Alert may display “Keep blocking” & “Unblock” pop-up for security, please select the button “unblock”.
(If you select “keep blocking” blocked, then there will be no network connection.)

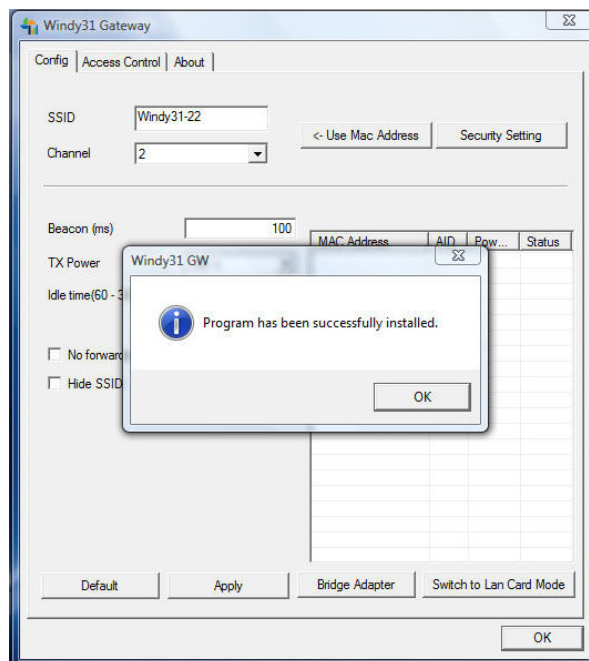


Portable Wireless Broadband Router

- 3) Please wait until “Windy31 Gateway Manager” window appears, “Windy31 setting in progress” and “setting complete” windows are displayed as shown below. This process will take some minutes as it is installing the Windy31 Gateway. (Installation time may differ according to computer configuration)



- 4) In Step 3, After “Program has been successfully installed“ appears, click “OK”. Then, Windy31 has completed installation.

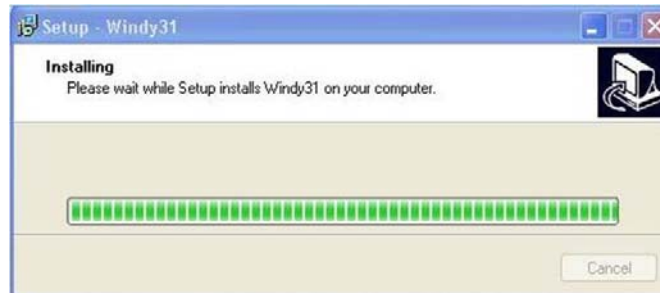


Connection method may differ according to Wireless LAN device, please refer to Wireless LAN usage method. (For wireless device usage method, please refer to wireless device product manual or please contact the provider.)

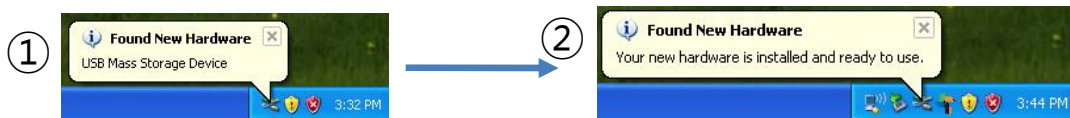
2.4 Windows XP

◆ Installation

- 1) Insert Windy31 into USB port of Laptop or Desktop PC and program will automatically run as shown below.



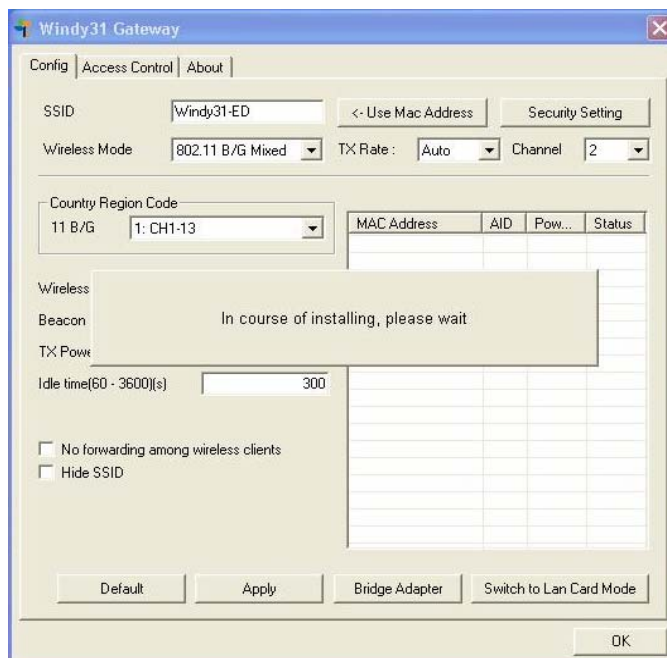
- 2) After program installation, the following screen will appear one after another in the right-side of Windows Task bar, showing that the USB device acknowledges and is installing Windy31.



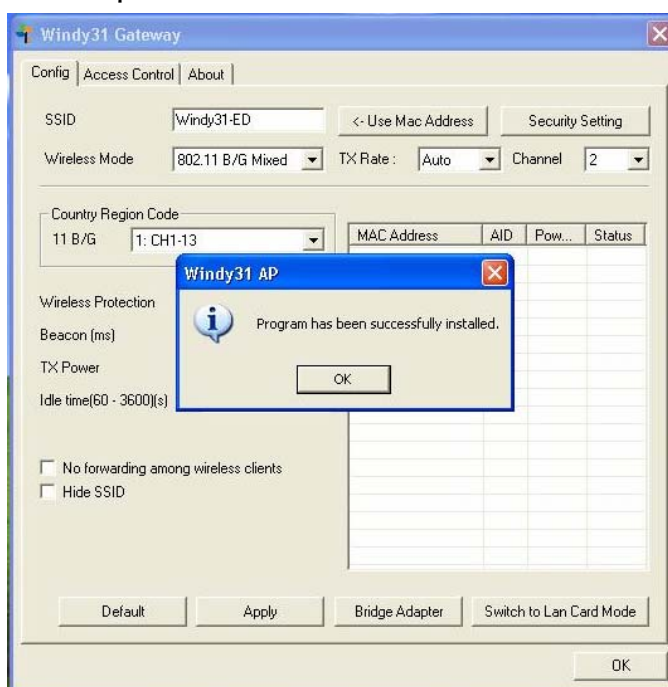
During installation, Windows Security Alert may display “Keep blocking” & “Unblock” pop-up for security, please select the button “unblock”. (If you select “keep blocking” blocked, then there will be no network connection.)



- 3) Please wait until “Windy31 Gateway Manager” window appears, “Windy31 setting in progress” and “setting complete” windows are displayed as shown below. This process will take some minutes as it is installing the Windy31 Gateway. (Installation time may differ according to computer configuration)



- 4) In Step 3, After “Program has been successfully installed“ appears, click “OK”. Then, Windy31 has completed installation.



Connection method may differ according to Wireless LAN device, please refer to Wireless LAN usage method. (For wireless device usage method, please refer to wireless device product manual or please contact the provider.)

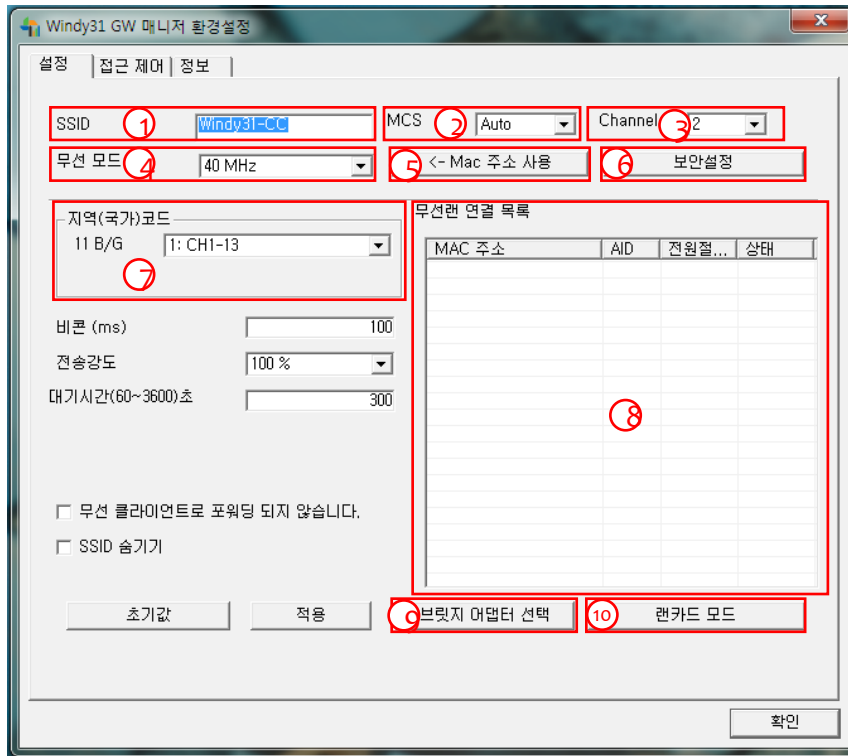
3. Windy31 Manage Setting

3.1 Windy31 Gateway Manager setting

◆ Screen shown below is Windy31 Gateway Manager Setting screen.

For more information, Please refer to our website [www.windy31.com]

Config

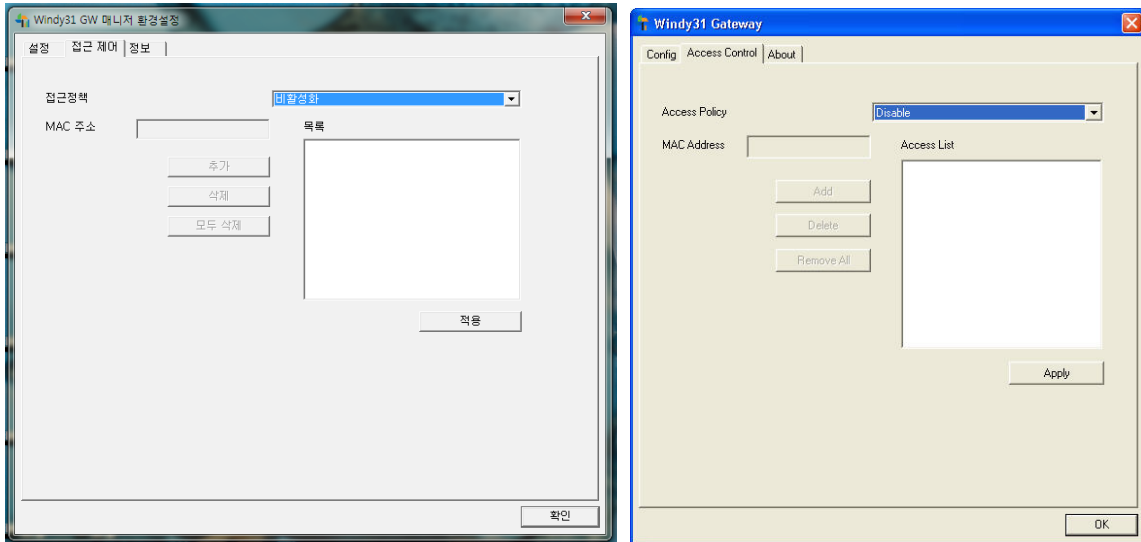


- ① SSID : Name to be used in wireless(Default is Windy31-XX)
- ② MCS: Assign 11n data transmission speed
- ③ Channel : Assign wireless channel, automatically.
- ④ Wireless Mode: Assign wireless LAN mode (802.11b=11Mbps/802.11g=54Mbps)
- ⑤ Use Mac address : Assign SSID as MAC address.
- ⑥ Security Settings : Assign wireless security settings
(Please refer to the installation guide for more details)
- ⑦ Area(Country code) : Assign channel range used by each countries.
- ⑧ Wireless LAN connection list : List of wireless device's MAC address connected to Windy31.
- ⑨ Bridge adapter : Allow Internet-connected network card change
- ⑩ Switch to LAN card mode : Button to use Windy31 as LAN Adapter.

(In LAN Adapter mode, Windy31 Gateway functions cannot be used)

Access Control

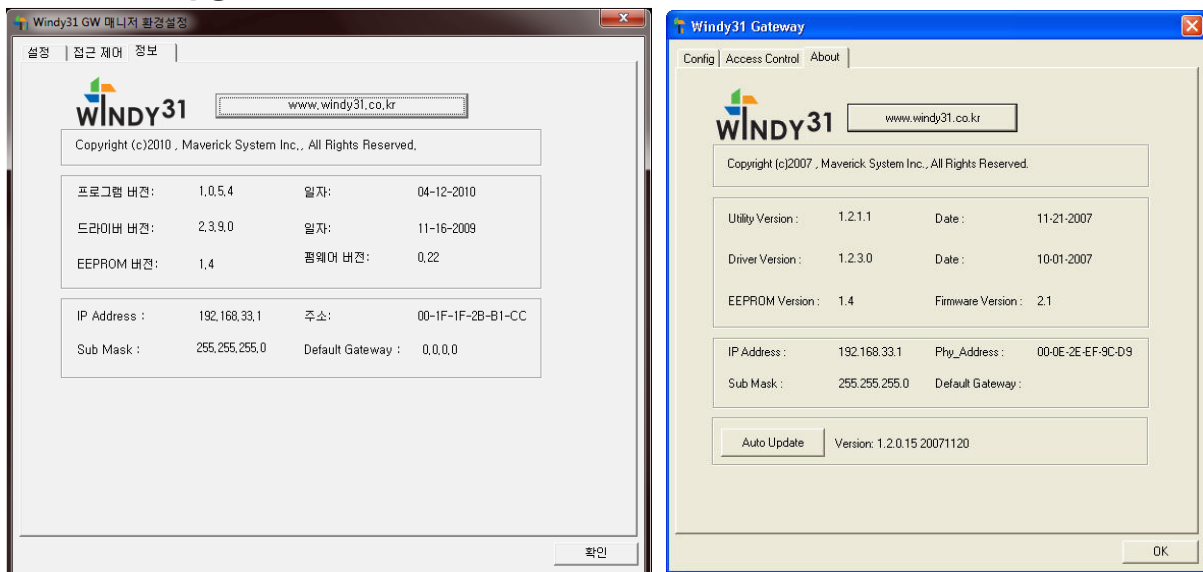
- ◆ Internet access by other users can be controlled in “Access Control” menu of Windy31 Gateway below.



- ① Disable : Disable Access Policy.
- ② Allow All : All the Mac addresses access to the internet listed in the table can be accessed to the internet.
- ③ Reject All : All the Mac addresses listed in the table can not be accessed to the internet.

About

- ◆ Software upgrade



Click “Auto Update”, to confirm that you are using the latest software. If you are currently using the old software, the software update will be appeared.

3.2 Wireless LAN Adapter setting

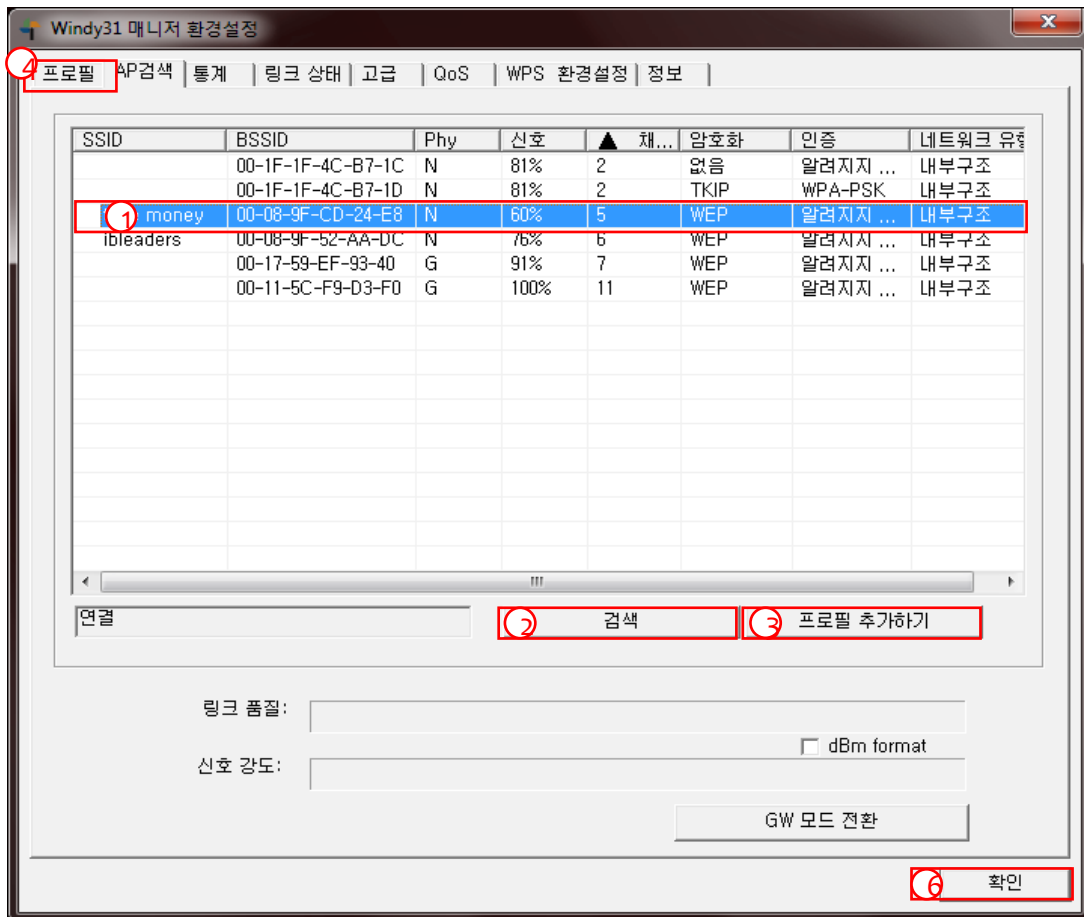
➤ WINDOWS VISTA/7

- ◆ How to configure PC setting for using Windy31 as Wireless LAN Adapter. Router Mode(GW-mode) when changing modes in GW Gateway window manager “switch to LAN Card Mode” button should be.

For more information, please refer to our website [www.windy31.com]

◆ Wireless LAN connection

- 1 Scan AP
- 2 Select AP
- 3 Add to Profile
- 4 Profile
- 5 Select profile
- 6 OK



- ① Select AP as connection mode from AP list
- ② Rescan : Scan Wireless AP
- ③ Connect : Connect to selected AP with wireless
- ④ Add to Profile : Add the selected AP to Profile
- ⑤ Switch to Gateway mode : Switch to Windy31 Wireless Router mode

➤ WINDOWS XP

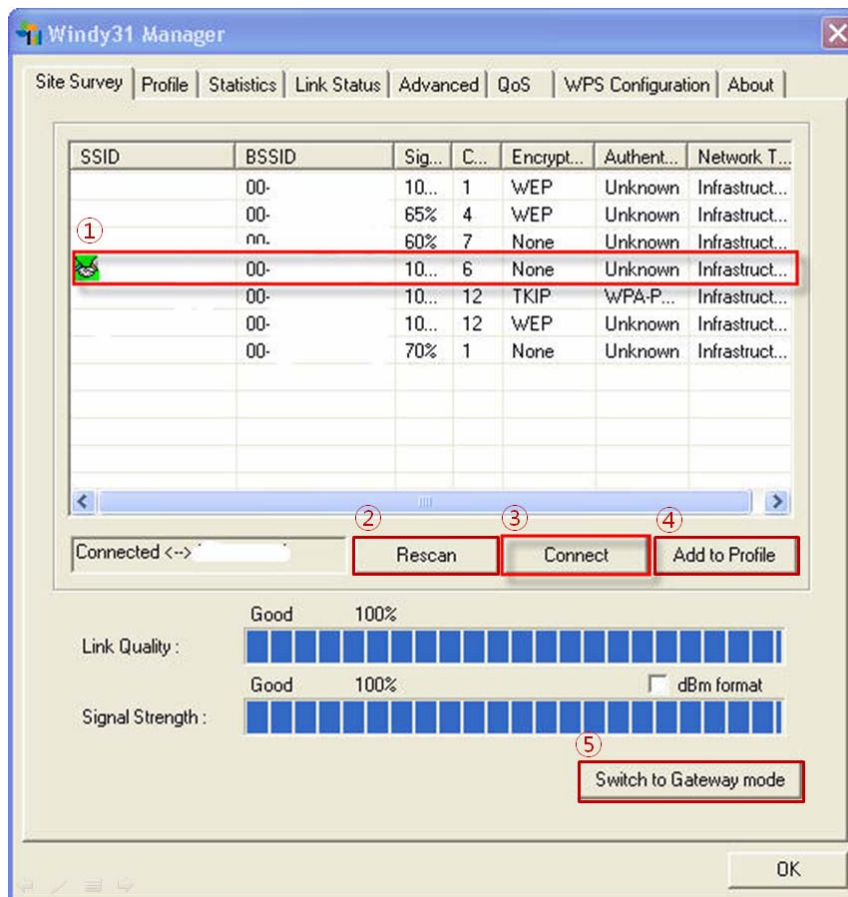
- ◆ How to configure PC setting for using Windy31 as Wireless LAN Adapter.
Router Mode(GW-mode) when changing modes in GW Gateway window manager
“switch to LAN Card Mode” button should be.

For more information, please refer to our website [www.windy31.com]

- ◆ Wireless LAN connection

1. Scan AP → 2. Select AP → 3. Connect

Site Survey



- ① Select AP as connection mode from AP list
- ② Rescan : Scan Wireless AP
- ③ Connect : Connect to selected AP with wireless
- ④ Add to Profile : Add the selected AP to Profile
- ⑤ Switch to Gateway mode : Switch to Windy31 Wireless Router mode

4. Optional Configuration

4.1 Wireless LAN connection in Windows VISTA/7

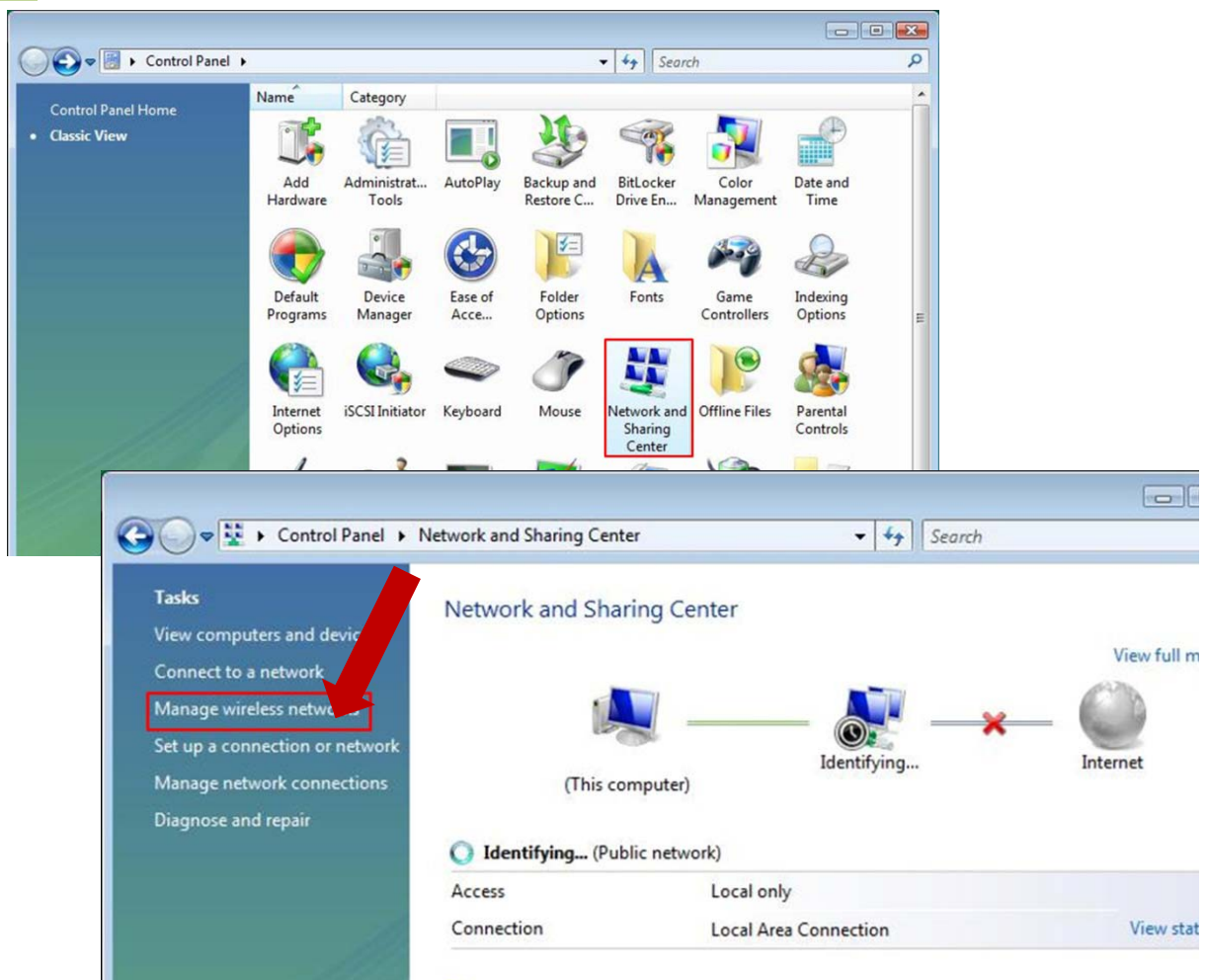
◆ To use wireless LAN service, Wireless LAN Adapter must be installed in your computer.

- Wireless LAN connection program(WLAN Autoconfig) is embedded in Windows VISTA.
- If wireless service is disabled, wireless LAN cannot be used.
- Please refer to Windows VISTA user manual for further information on wireless LAN Autoconfig.

Please refer to the product manual of Wireless LAN Adapter purchased or contact Wireless LAN Adapter manufacturers/sales representatives for installing user's wireless LAN Adapter or application program.

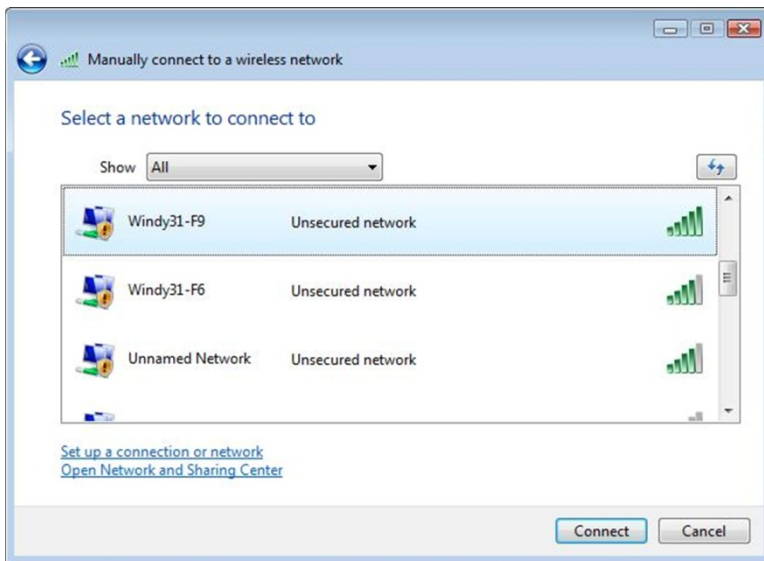
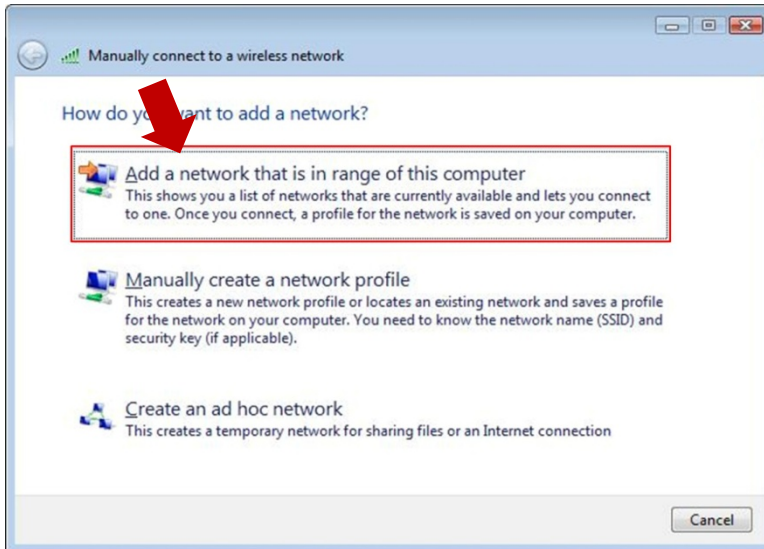
◆ Optional Connection

Start → Control Panel → Network and Sharing Center → Manage wireless networks



Portable Wireless Broadband Router

- Add a network that is in range of this computer → Windy31-XX → Connect
- Connect

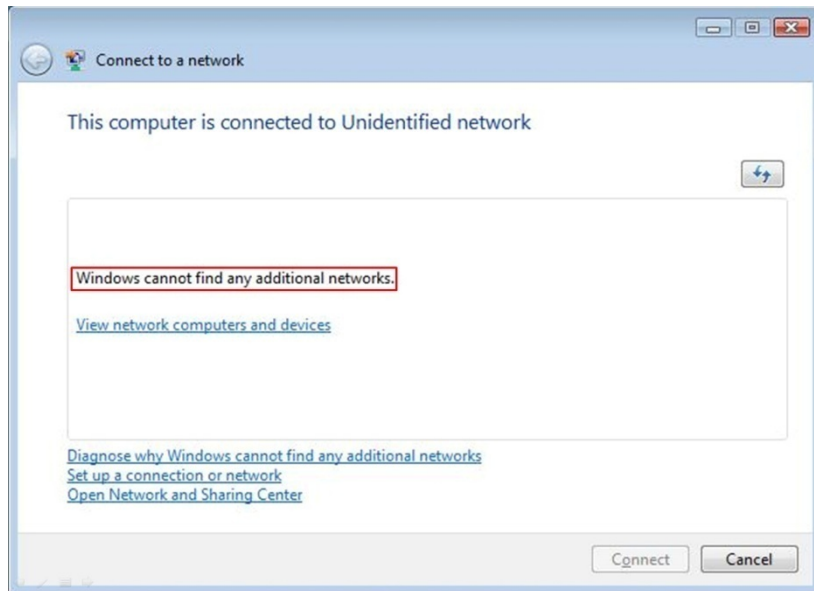


- "Successfully connected to Windy31-xx." message appears and check box "Save this network" saved then, click "Close" button to complete wireless network connection.

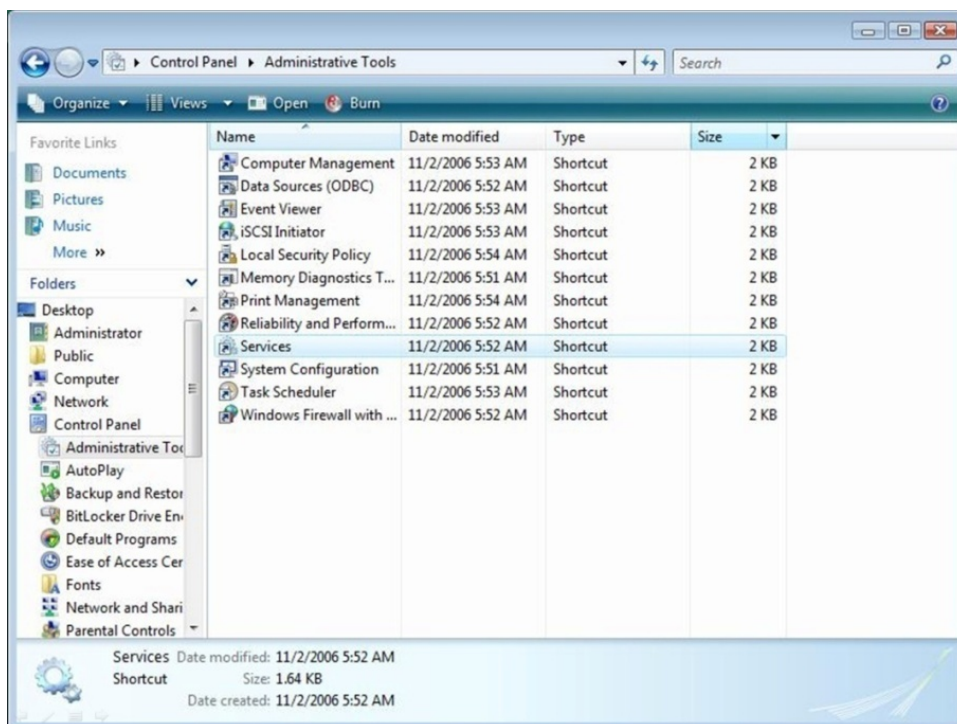
Portable Wireless Broadband Router

Start → Control Panel → Network and Sharing Center → Manage wireless networks

- If the message "This computer is connected to Unidentified network" appears, click "Addition" button in wireless network management and check the following service item.

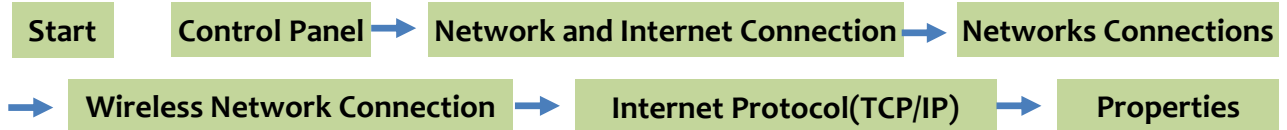


Start → Control Panel → Administrative Tools → Service → WLAN Autoconfig

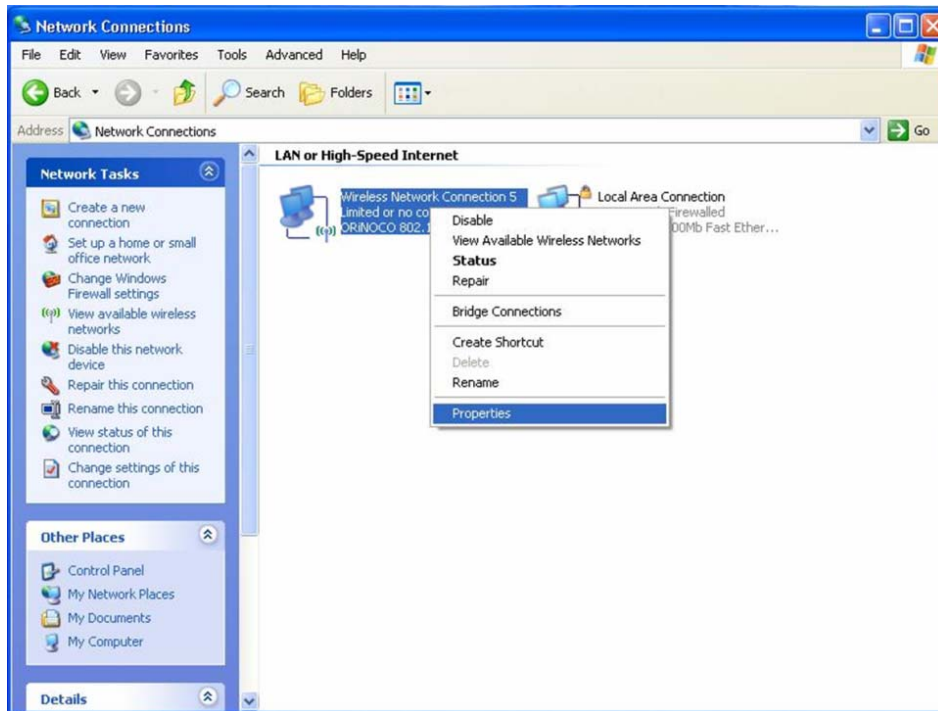


- Confirm whether service has begun normally after the selection of "WLAN Autoconfig" in services (Local).

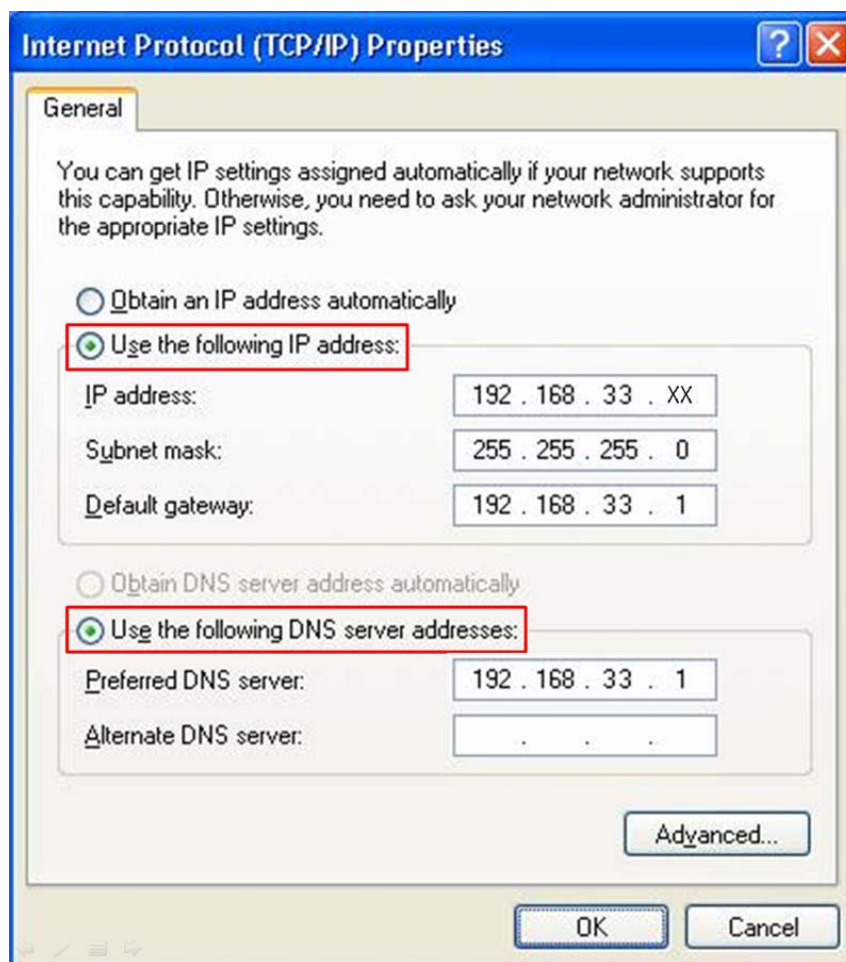
4.2 Directly input IP Address



- Select Wireless Network Connection, click right-side of mouse to select properties.



- ◆ In Internet Protocol(TCP/IP) Properties, select "Use the following IP Address(S)", then directly input IP address.
 - **IP Address** : IP address which used in Windy31, is inbetween the following IP range 192.168.33.2 to 192.168.33.254.
 - **Subnet Mask** : Windy31 uses C-class by default.(255.255.255.0)
 - **Default gateway** : Windy31 uses Default gateway.(192.168.33.1)



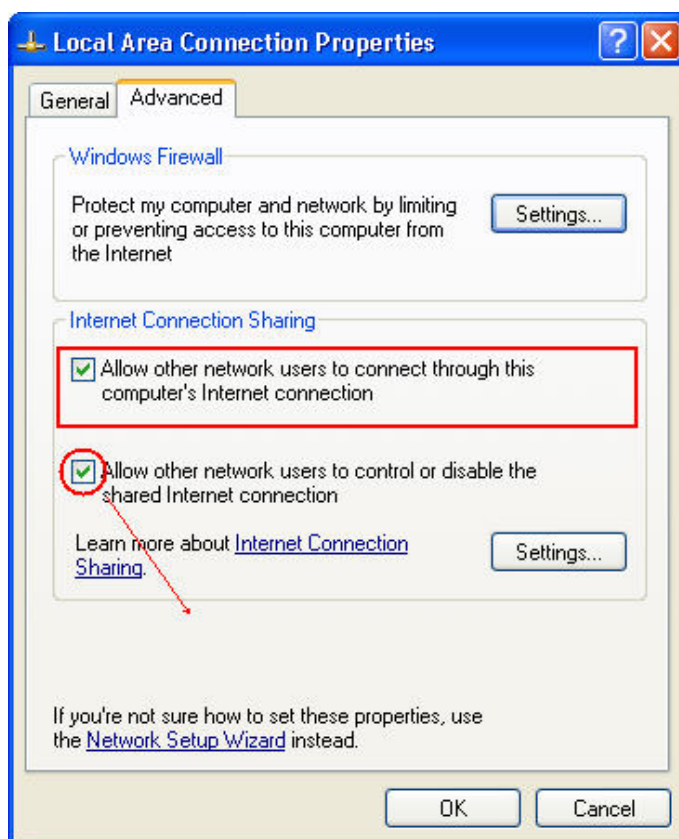
5. Trouble Shootings

◆ Checklist before installing - page 7

1. There is no response and no action after connecting Windy31.
 - First, disconnect and reconnect Windy31 to another USB port or another Computer, If there is no response, please contact our Tech-support engineer.
2. Windy31 is detected but not installed.
 - Please install with “Windy31install.exe” file which is in the virtual CD-ROM Drive (Explorer in the your computer)
3. Cannot detect virtual CD-ROM Drive and process further at storage device detection
 - Remove storage device from device management, rescan hardware detection, and then re-install. If you get same problem, please check USB port.
4. At Installation, Windy31 enabler dialog doesn't show, install as LAN Adapter mode promptly.
 - Check service status in the windows service category WMI(Windows Management Instrumentation). If there is problem in WMI, Windy31 can't be configured in the Windows service. Please check your computer, below.
 - * Control Panel -> Administrative Tools -> Service and Application -> Check WMI control status run correctly.
5. In occurrence of Internal Connection Error Code 80040201 the ensuing problem is that no IP address gets stored in Windy31 adapter.



- 1. Having computer re-boot and type any random IP address into Windy31 and see whether it gets stored. (to be done by windy31 manager program information).
2. Confirming IP address stored, check whether WindowsICS gets on running. Getting into 'Local Network Property → Advanced', select Internet Sharing (select wireless network (windy31))



At this time, the IP address of wireless network (Windy31) as shared is to be set as 192.168.0.1

3. If sharing setting runs properly, off with sharing and do GW mode transfer.
4. If IP address fails to be stored, uninstall Windy31 and further locate Windy31 in registry and completely remove it, and then try to re-install.
6. Windy31 is installed completely, but try to connect to Windy31 from another wireless device, connection is blocked and connection is not established.
 - You can see this message if windy31 is installed at personal firewall software operating computer.(Such as, Zone Alarm, McAfee Personal Firewall, My Firewall, Sygate Personal Firewall, Etc.)
 - Re-connect it after temporary deactivation of firewall program.
 - * To allow internet connection in firewall software program, refer to the **Instruction Guide and Manual.**
7. Internet doesn't work at wireless client's computer even it is connected to Windy31.
 - Please check IP Address of wireless client
 - "Start"->"Run"->type "cmd"->type "ipconfig/all" then you can see IP address of wireless client. It must be 192.168.33.xxx

8. Wireless client can't get IP address even you unblocked firewall and security setting.

→ You must directly input IP address. Please refer to the Installation Guide, "Directly input IP address, page 27,28.

9. You can't use internet at wireless client's for long time, if host computer goes to power saving mode

→ 1. Do not use power saving mode at host computer.

→ 2. Or reconnect the Windy31 to the host computer.

10. You can't see the Installation complete message, after occurring internal error, Switching to LAN adapter mode

→ In Wireless LAN Adapter mode, click "Switch to Gateway mode" button, if "Switch to Gateway mode" is not switched, reinstall it again.

11. Computer which has been connected with Windy31, gets short of speed or stops acting.

1) Where program of Nero InCD/ DVD Ram Driver has been installed, Conflict with this program causes the problem.

→ It is needed to uninstall the above program, reboot and proceed with the installation.

12. No further process goes on after installation of Windy31 program.

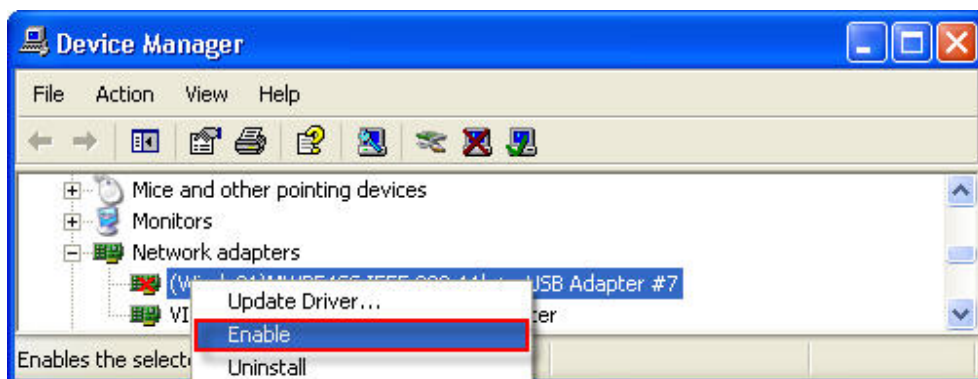
1) It occurs firstly after installation

→ It appears as error in Windy31 Image file, and redoing with firmware is required.

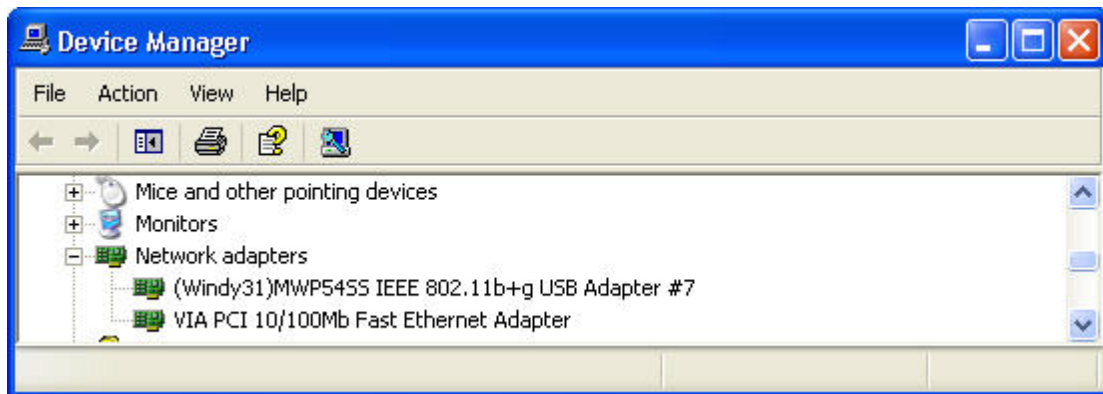
2) When rebooting computer or during its operation, no response follows after recognition of USB device

→ Check in Device Driver to find out whether Windy31 is in enabled position.

Disabled position being found as shown in the picture below, change it to Enabled by clicking right button of mouse.



Picture below shows the enabled position of Windy31.



13. Computer being re-boot, Windy31 GW Manager program would not work.

1) If, as shown below, it is after recognition of USB device that Windy31 GW Manager does not work



[Solution] The status is stoppage with CD-ROM.
Open My Computer and have CD-ROM run.

2) If, as shown below, setting screen does not appear even after recognition of USB device and running of Windy31 manager



[Solution] It's acting at LAN card mode. Click icon,
at Windy31 Manager setting menu click GW mode and do with mode transfer.

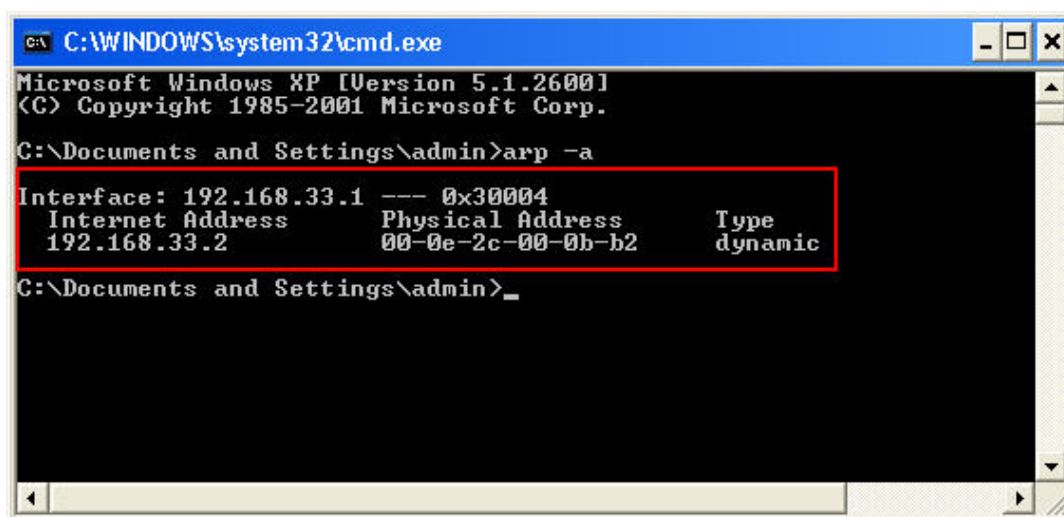
If WINDy31 Manager Program would not run, force the file of windy31 GW.exe presently running to end from processor and re-execute.

Means to end processor: Simultaneously press the three keys of Ctrl + Alt + Del, and select processor at Task Manager and locate Windy31GW.exe to select and close it by clicking processor close.

**** Windy31 setting (Windy31 Enabler) screen would not stop.**
(Problem lies with inability to store change of IP address and it is needed to check malware or virus after which Windy31 program is to be removed and re-installed.)

- 1) If, in the course of Windy31 Enabler running, no further step progresses at ~4X, there may be network problem with computer connected to Windy31, and it is needed to check malware or virus with the relevant computer and re-install.
- 2) If, in the course of Windy31 Enabler running, no further step progresses at 5X, problem lies with inability to change IP address in internet connection adapter of HOST PC. IP change may be blocked by firewall program as installed, and in the absence of firewall please try to re-install after checking with malware or virus.
- 3) If, in the course of Windy31 Enabler running, no further step progresses at 6X, the problem may have occurred from settings of Windows Firewall or File Sharing, and it is needed to check with Windows network status. Further it causes the error of 80040201. It is needed to check HOST PC computer and network status.
- 4) If, in the course of Windy31 Enabler running, it stops at 7X~8X, the problem lies with inability to change IP address in Windy31, and it is needed to force the processor Windy31 Enabler.exe to end and re-install Windy31.

* Means to confirm IP address of Client PC connected to Windy31 (arp -a command input)
It can be confirmed that IP (192.168.33.2) address of Client PC is connected to Windy31 IP (192.168.33.1)



```
C:\WINDOWS\system32\cmd.exe
Microsoft Windows XP [Version 5.1.2600]
(C) Copyright 1985-2001 Microsoft Corp.

C:\Documents and Settings\admin>arp -a

Interface: 192.168.33.1 --- 0x30004
Internet Address      Physical Address      Type
192.168.33.2         00-0e-2c-00-0b-b2    dynamic

C:\Documents and Settings\admin>_
```

- ◆ If you have any problem, please visit at Windy31 website (www.windy31.com) and check Q&A in details customer support section.
- ◆ Official Website (www.windy31.com) provides the Windy31 User with the Remote Control Service for the accurate trouble shootings.

Wireless Broadband Router

Model No. MW-P150MS



TEL : +82 - 70 - 7018 - 0245

FAX: +82-2082-1590

Homepage: www.windy31.com

Maverick Systems Inc.

Federal Communication Commission Interference Statement

This equipment has been tested and found to comply with the limits for a Class B digital device, pursuant to Part 15 of the FCC Rules. These limits are designed to provide reasonable protection against harmful interference in a residential installation. This equipment generates, uses and can radiate radio frequency energy and, if not installed and used in accordance with the instructions, may cause harmful interference to radio communications. However, there is no guarantee that interference will not occur in a particular installation. If this equipment does cause harmful interference to radio or television reception, which can be determined by turning the equipment off and on, the user is encouraged to try to correct the interference by one of the following measures:

- Reorient or relocate the receiving antenna.
- Increase the separation between the equipment and receiver.
- Connect the equipment into an outlet on a circuit different from that to which the receiver is connected.
- Consult the dealer or an experienced radio/TV technician for help.

FCC Caution: To assure continued compliance, (example - use only shielded interface cables when connecting to computer or peripheral devices). Any changes or modifications not expressly approved by the party responsible for compliance could void the user's authority to operate this equipment. This device complies with Part 15 of the FCC Rules. Operation is subject to the following two conditions: (1) This device may not cause harmful interference, and (2) this device must accept any interference received, including interference that may cause undesired operation

including interference that may cause undesired operation

IMPORTANT NOTE:

FCC RF Radiation Exposure Statement:

This equipment complies with FCC RF radiation exposure limits set forth for an uncontrolled environment. This equipment should be installed and operated with a minimum distance of 20 centimeters between the radiator and your body. This transmitter must not be co-located or operating in conjunction with any other antenna or transmitter.

NOTE: THE MANUFACTURER IS NOT RESPONSIBLE FOR ANY RADIO OR TV INTERFERENCE CAUSED BY UNAUTHORIZED MODIFICATIONS TO THIS EQUIPMENT. SUCH MODIFICATIONS COULD VOID THE USER'S AUTHORITY TO OPERATE THE EQUIPMENT.

IMPORTANT Safety Instruction:

CAUTION

To reduce the risk of electric shock, do not remove the top cover (or the rear section).
No user serviceable parts inside, refer servicing to qualified personnel.



This symbol, wherever it appears, alerts you to the presence of uninsulated dangerous voltage inside the enclosure-voltage that may be sufficient to constitute a risk of shock.



This symbol, wherever it appears, alerts you to the important operating and maintenance instructions in the accompanying literature. Please read the manual.

- 1) Read these instructions.
- 2) Keep these instructions.
- 3) Heed all warnings.
- 4) Follow all instructions.
- 5) Do not use this equipment near water.
- 6) Do not use near any heat sources such as radiators, heat resistors, stove, or other equipment that produce heat.

CAUTION
RISK OF EXPLOSION IF BATTERY IS REPLACED
BY AN INCORRECT TYPE.
DISPOSE OF USED BATTERIES ACCORDING
TO THE INSTRUCTIONS

European Union Regulatory Notice

Compliance with these directives implies conformity to harmonized European standards (European Norms) that are listed in the EU Declaration of Conformity issued by HP for this product or product family. This compliance is indicated by the following conformity marking placed on the product.



The wireless telecommunications functionality of this product may be used in the following EU and EFTA countries:

Austria, Belgium, Bulgaria, Cyprus, Czech Republic, Denmark, Estonia, Finland, France, Germany, Greece, Hungary, Iceland, Ireland, Italy, Latvia, Liechtenstein, Lithuania, Luxembourg, Malta, Netherlands, Norway, Poland, Portugal, Slovak Republic, Slovenia, Spain, Sweden, Switzerland, and United Kingdom,

Products with 2.4-GHz wireless devices France

Outdoor use limited to 10mW e.i.r.p within the band 2454-2483.5 MHz

CE RF Radiation Exposure Statement:

Caution This equipment complies with European RF radiation exposure limits set forth for an uncontrolled environment. This equipment should be installed and operated with a minimum distance of 20 centimeters between the radiator and your body. This transmitter must not be co-located or operating in conjunction with any other antenna or transmitter.



E-Mail : jjung629@mavericksys

Tel. : 82-70-7018-0250

Fax. : 82-2-2082-1590

Declaration of conformity

We, Maverick Systems, Inc.

908, Daerungposttower 2(i)-cha, 182-13 Guro-dong Guro-gu, Seoul 152-790

Declares under our own responsibility that the product

Product Description: Wireless LAN GW(Wireless LAN USB Dongle)

Model Number: MW-P150MS

To which this declaration refers conforms with the relevant standards or other standardizing documents

Art.3.1.a) EN 60950-1:2006 +A1:2010

**Art.3.1.b) EN 301 489-1 V1.8.1 Part 1
EN 301 489-17 V1.3.2 Part 17
EN55022:2006 +A1:2007
EN55024:1998 +A1:2001+A2:2003
EN61000-3-2:2006
EN61000-3-3:1995+A1:2001+A2:2005**

Art.3.2) EN 300 328 V1.7.1

According to the regulations in **Directive 1999/5/EC R&TTE Directive.**

Data : 2010 – 06 – 01

sign

Name and position [young-young choi / CEO]