

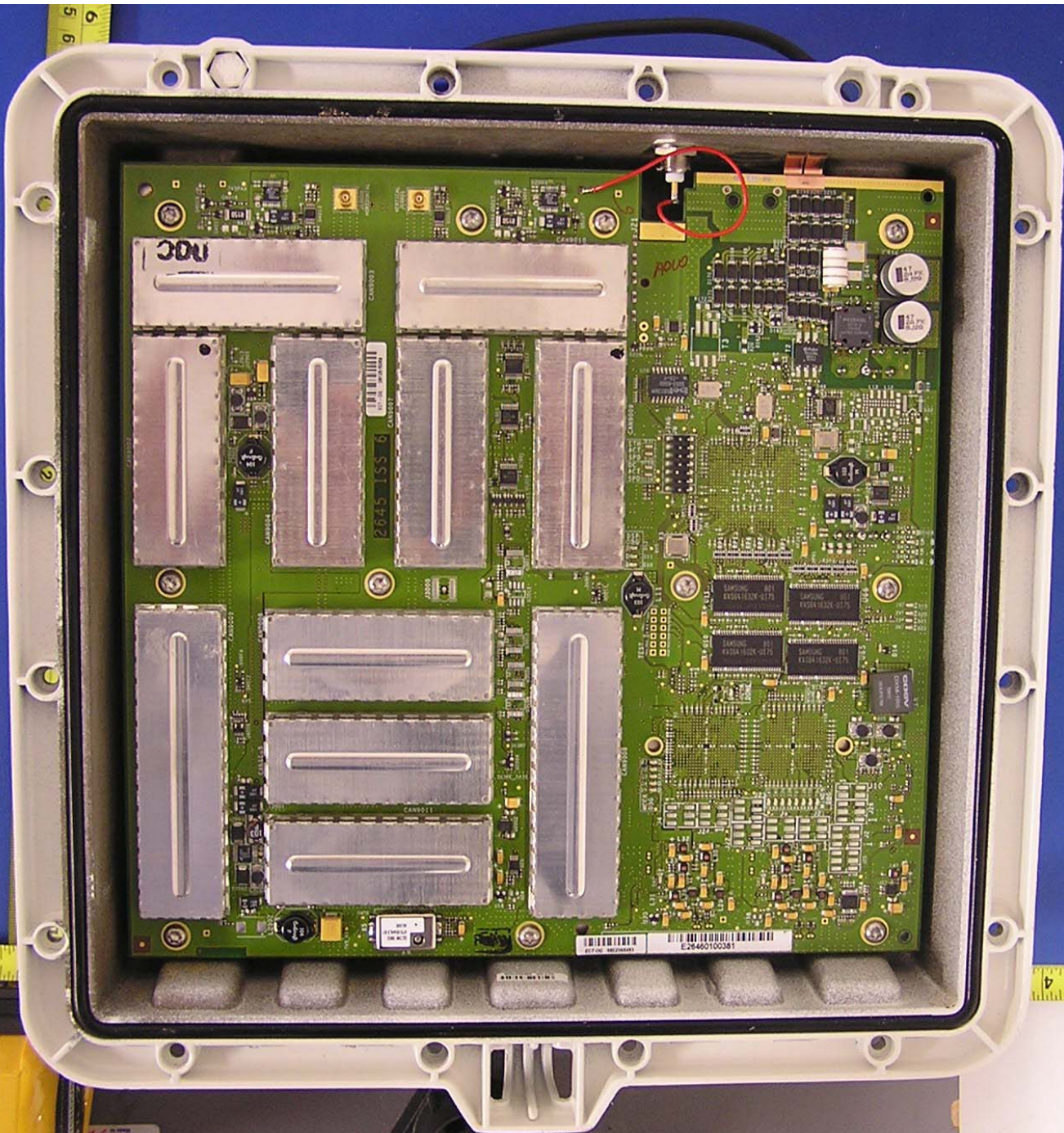


6
7
8
9
10
11
12
13
14
15
16
17
18
19
20
21
22

22
21
20
19
18
17
16
15
14
13
12
11
10
9
8
7
6
5
4
3
2
1



FESTRI
Manufactured in
Germany
Made in Germany
FESTRI



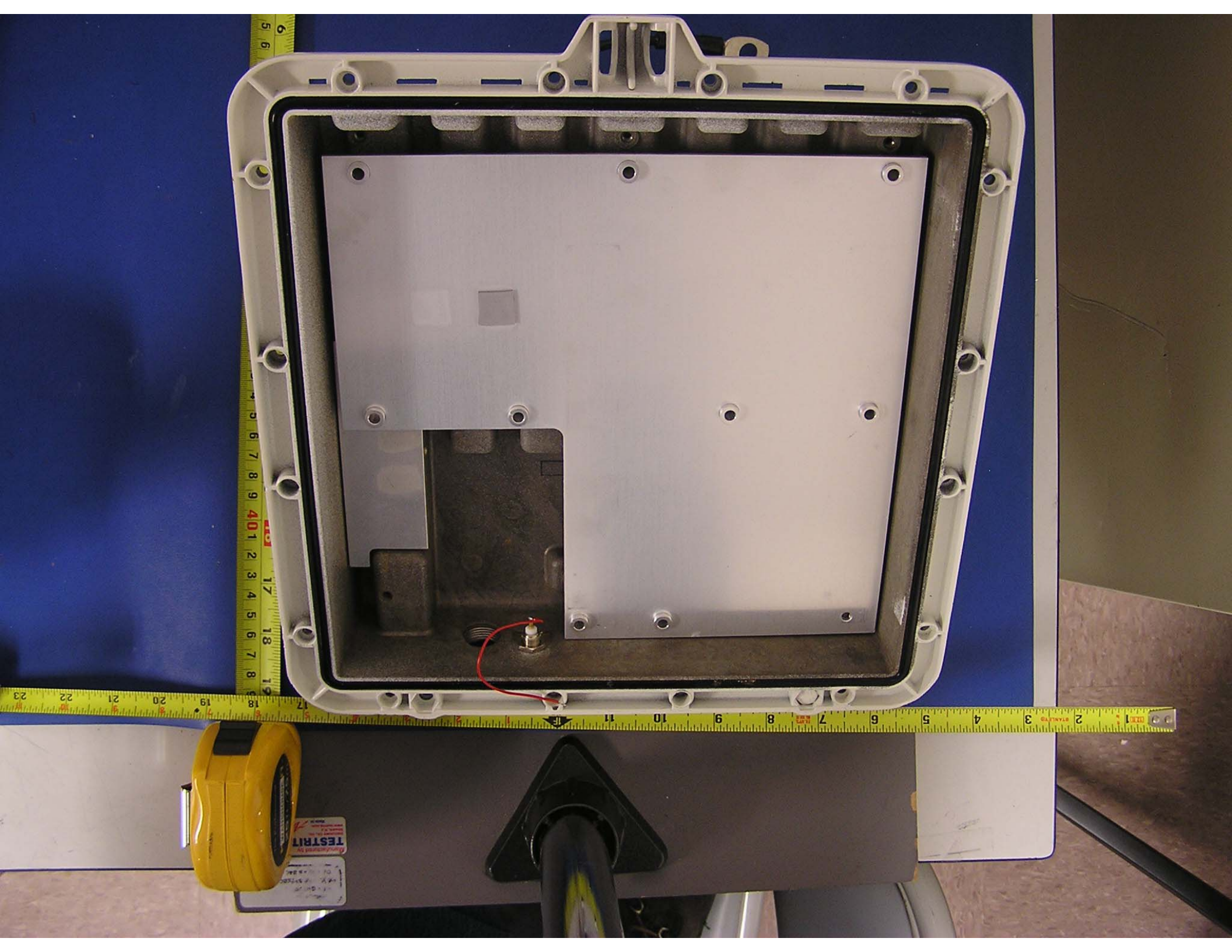
300

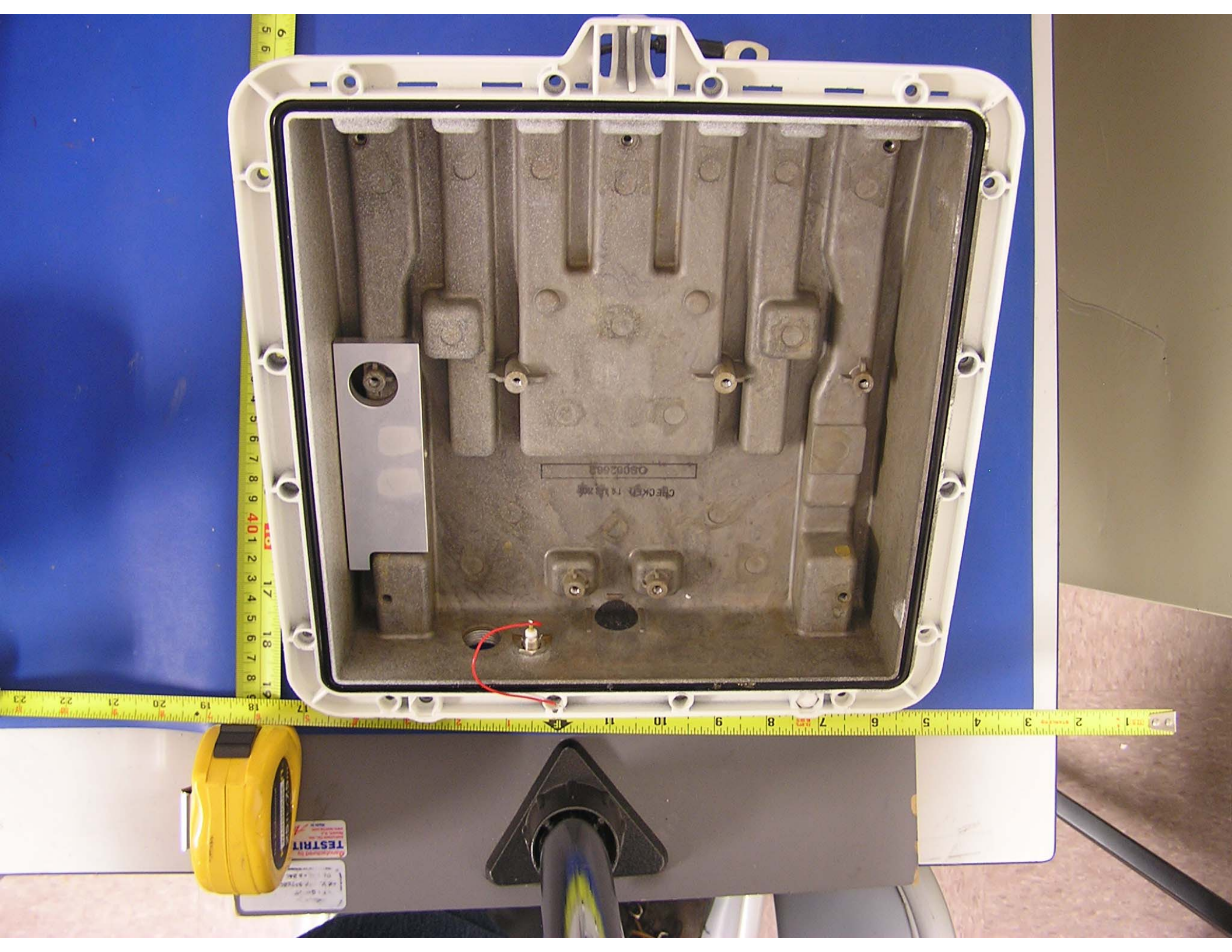
1000

2045 1SS 6

180100942E
E2946010038

TESTRAIT
DATE: 10/10/2008
TIME: 10:00 AM

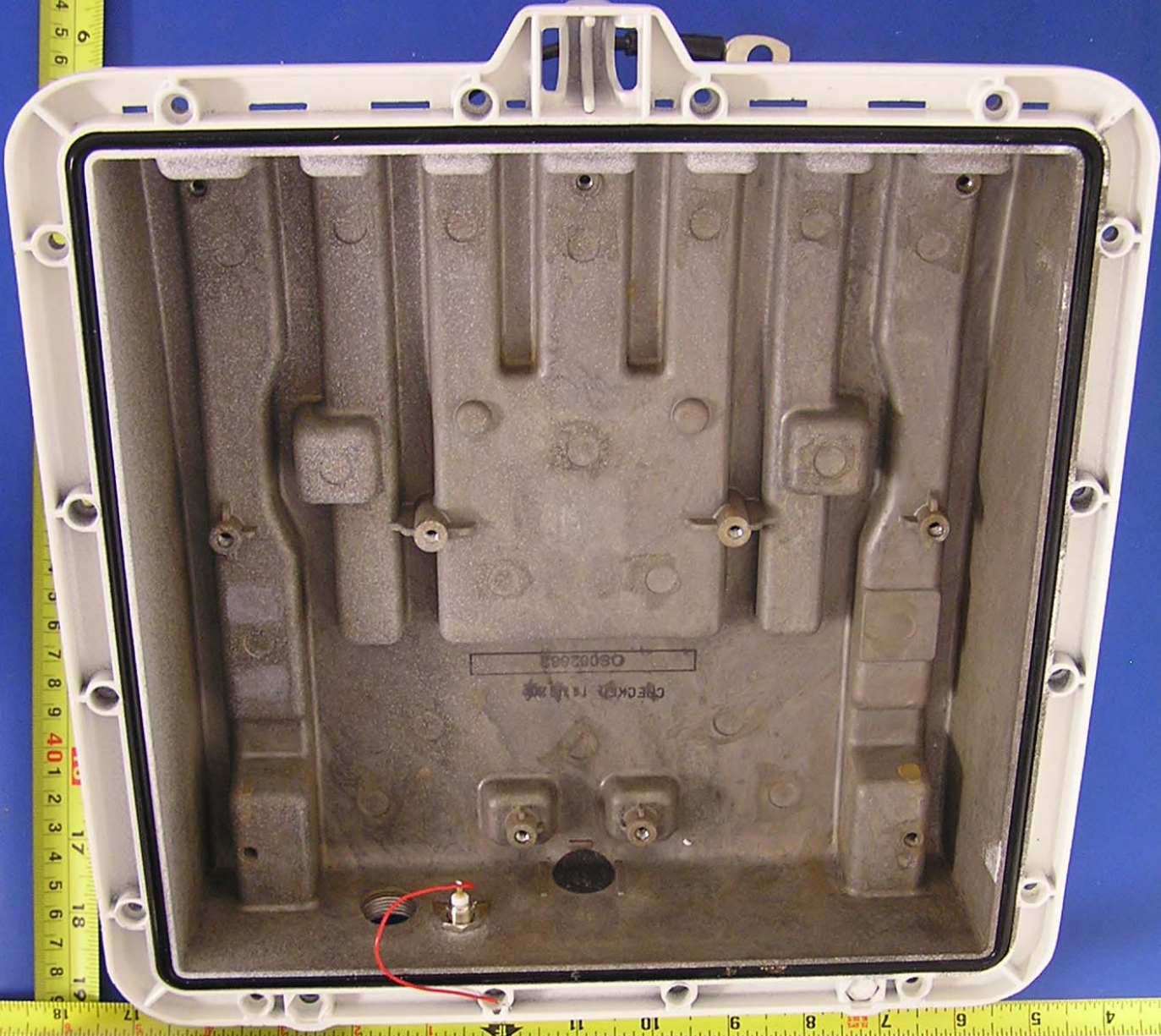




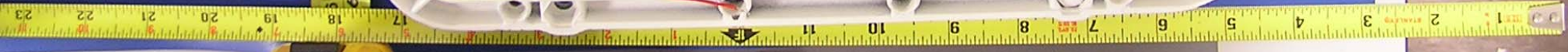
OS082003

CHECKER 18 18 206

TESTRIT
Produced by
1875
1875
1875

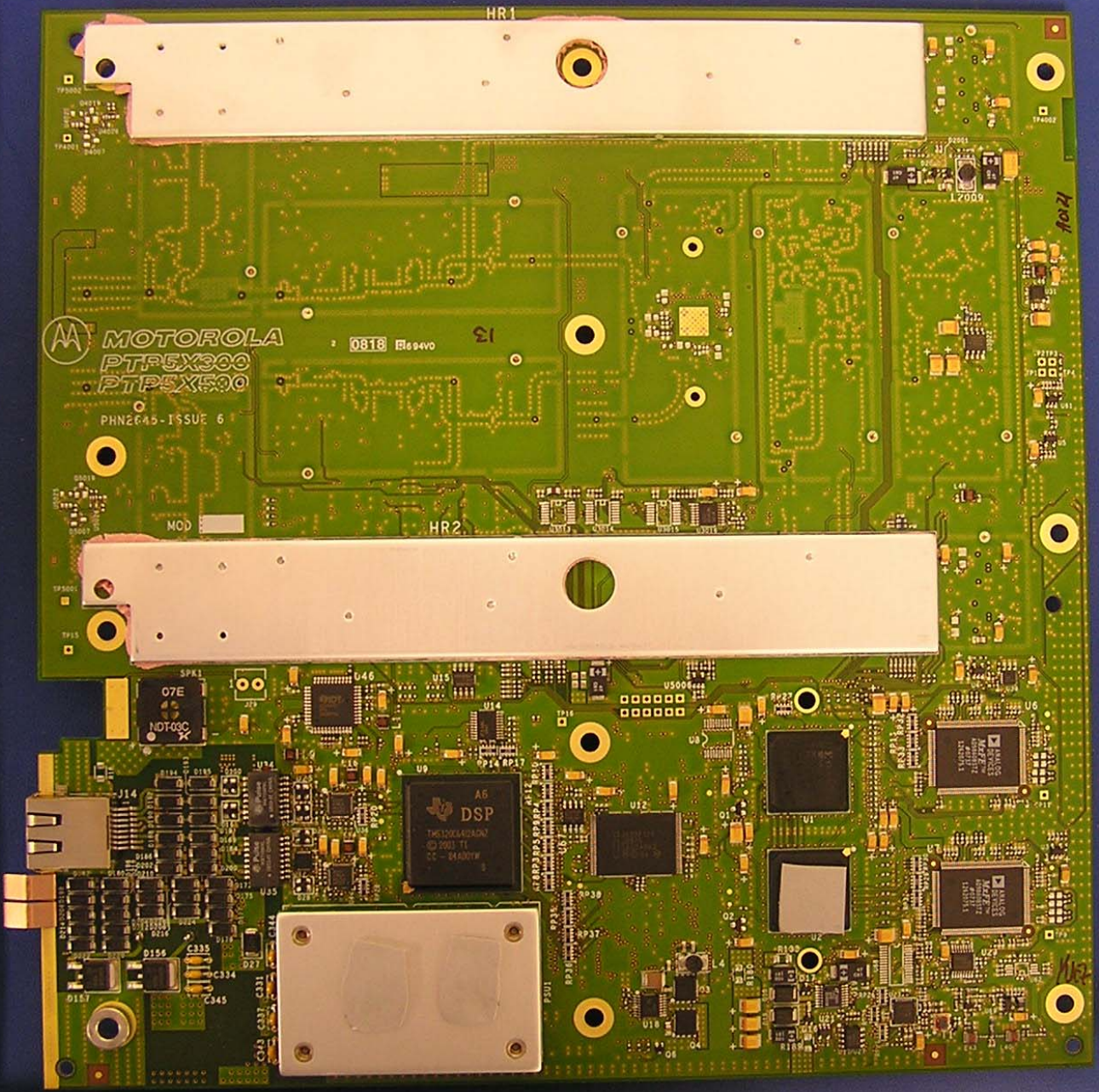


0802683
CHECKER 18 18 20



TESTRIT





MOTOROLA
PTP5X300
PTP5X500
PHN2R45-ISSUE 6

0818

HR2

A6
DSP
TH100040402
© 2001 TI
CC-84607K

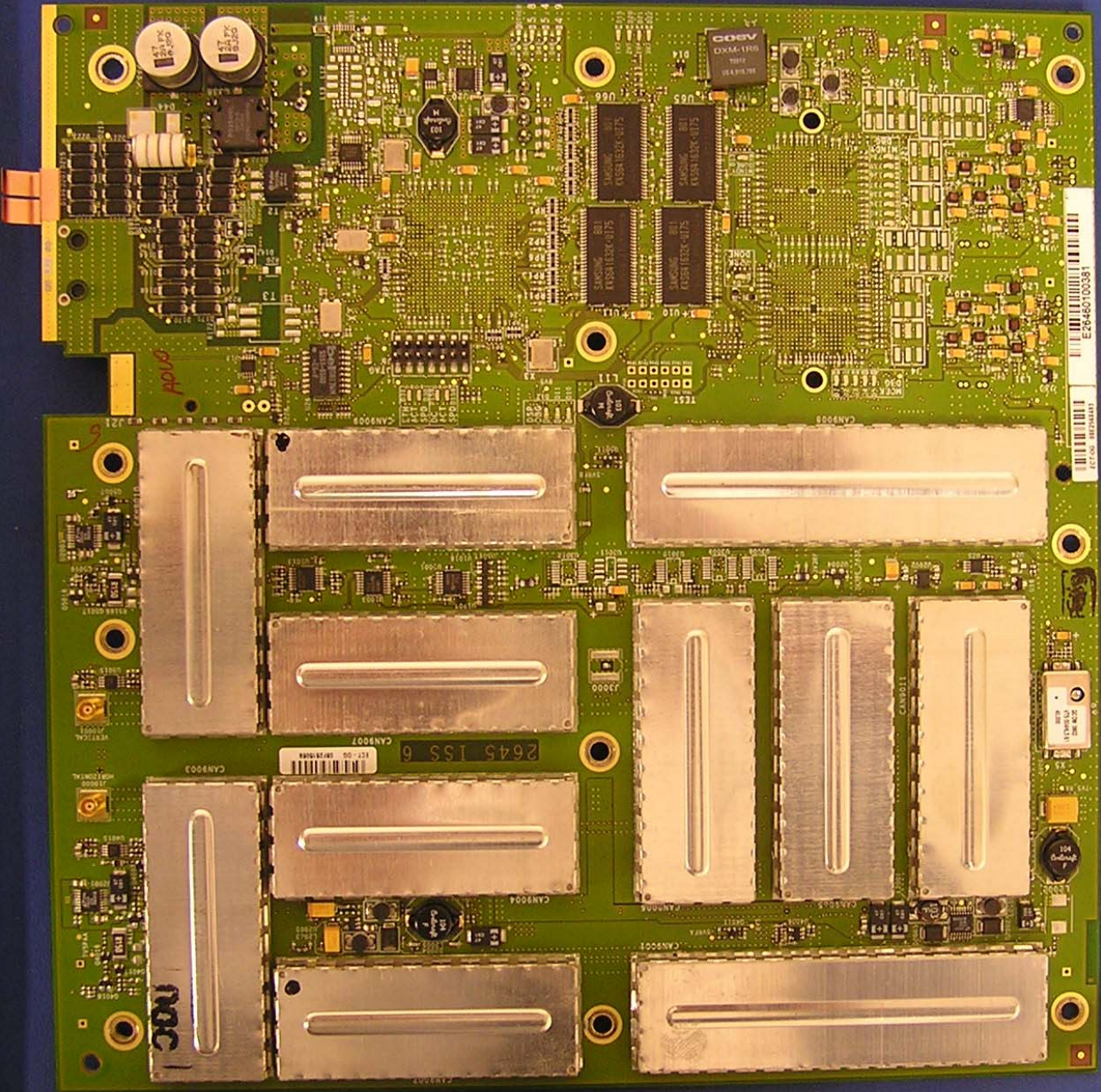
07E
NDT03C

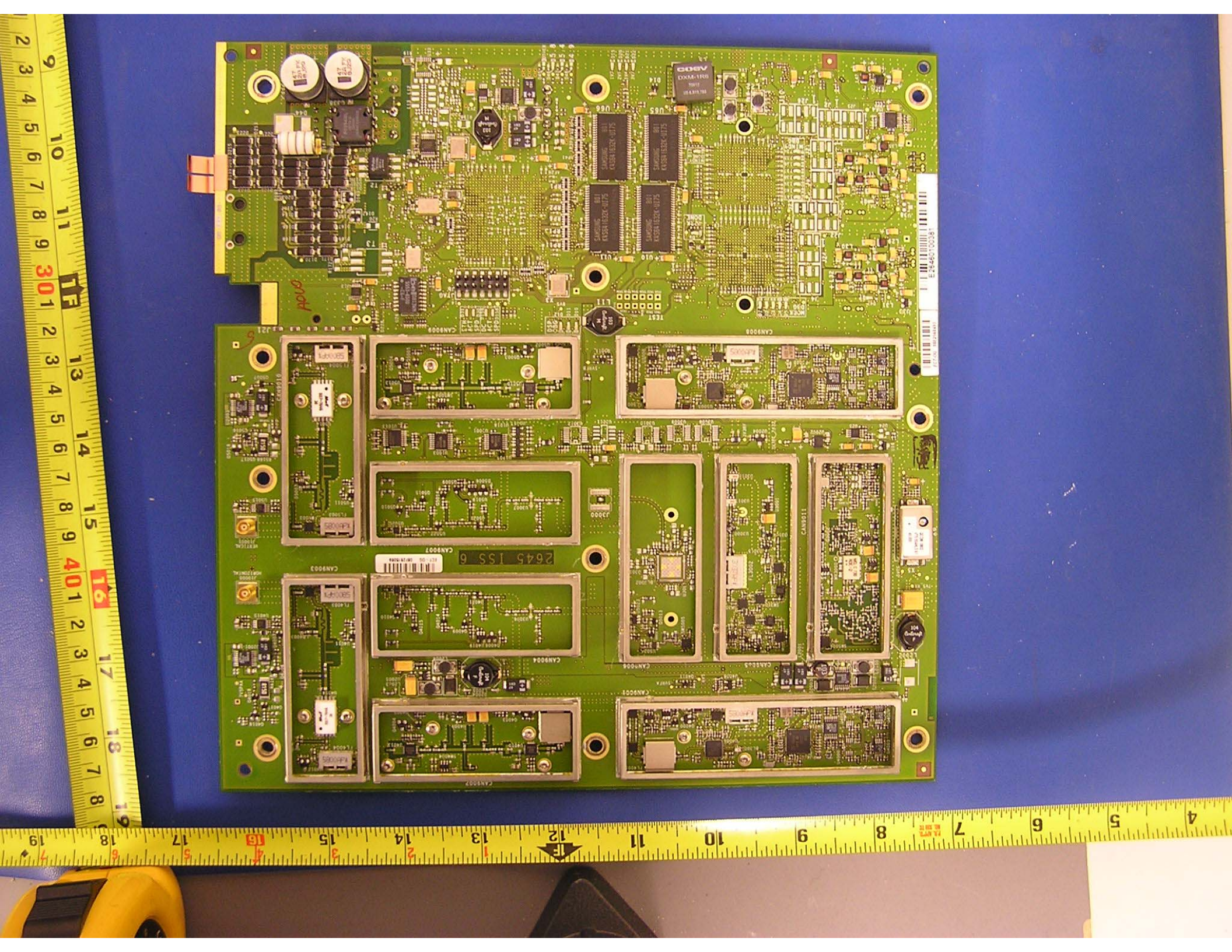
MAX9244
Motorola
MAX9244
MAX9244

MAX9244
Motorola
MAX9244
MAX9244

HR1

HR3

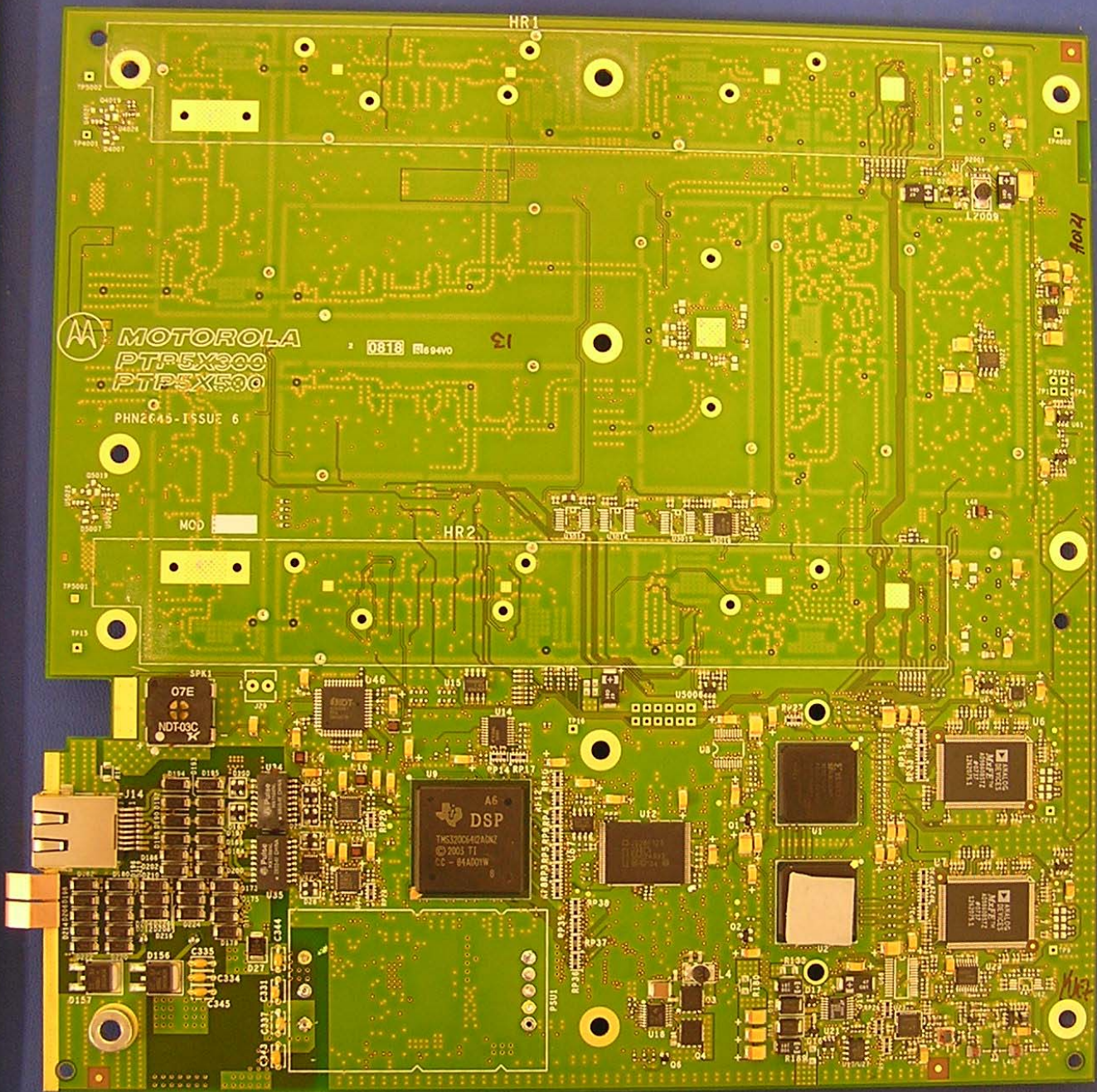




PCB populated with various electronic components, including integrated circuits, capacitors, and connectors. The board features several modules labeled CAN9001 through CAN9008. A barcode and the number 2645 ISS 6 are visible on the board.

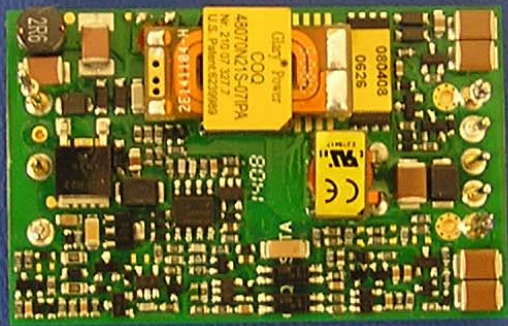
Key components and labels include:

- Top left: Two electrolytic capacitors (100µF, 16V).
- Top center: A large integrated circuit labeled CAN9008.
- Top right: A DOXM-100 component.
- Center: A module labeled CAN9007 with a barcode and the number 2645 ISS 6.
- Bottom: Modules labeled CAN9001 through CAN9006.
- Right side: A component labeled 1158182.



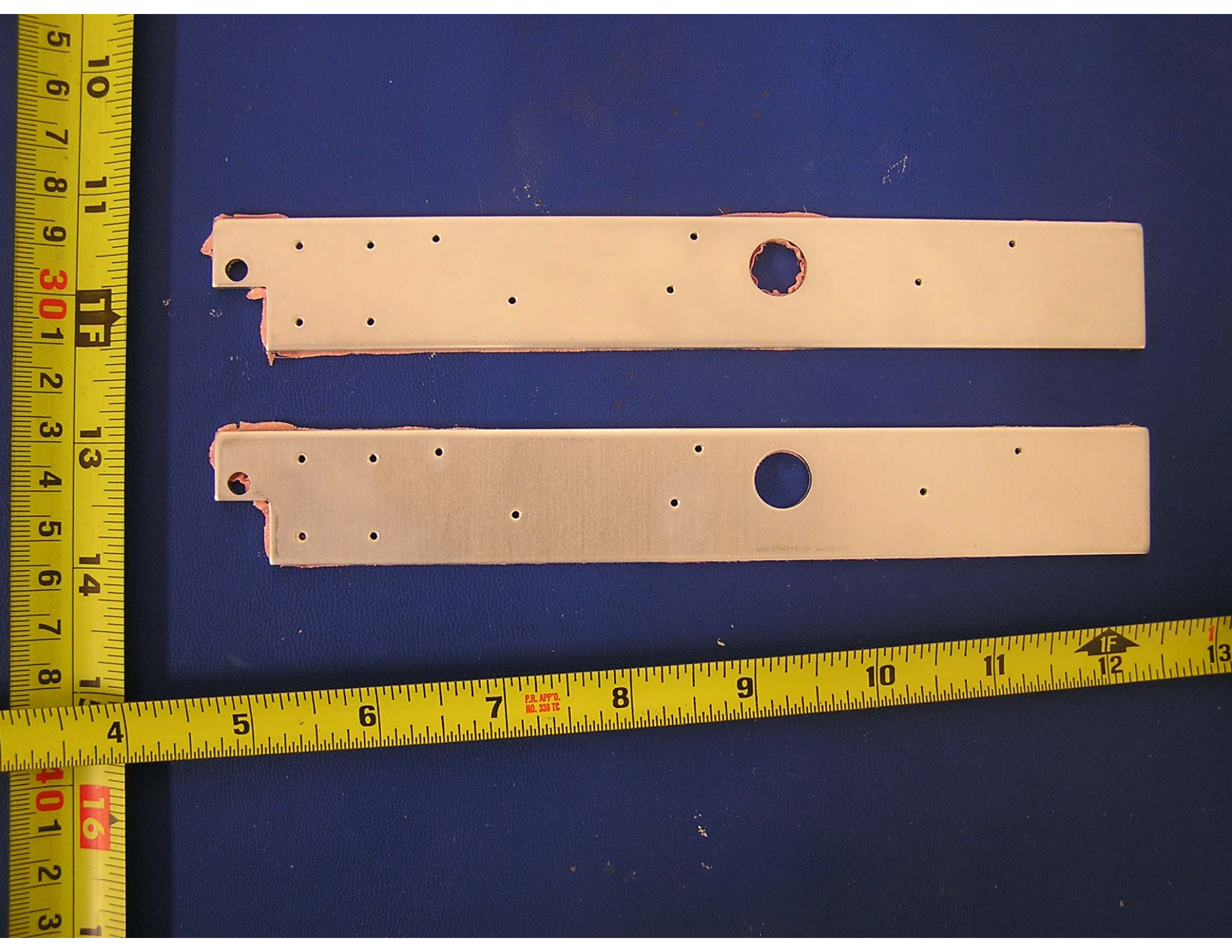


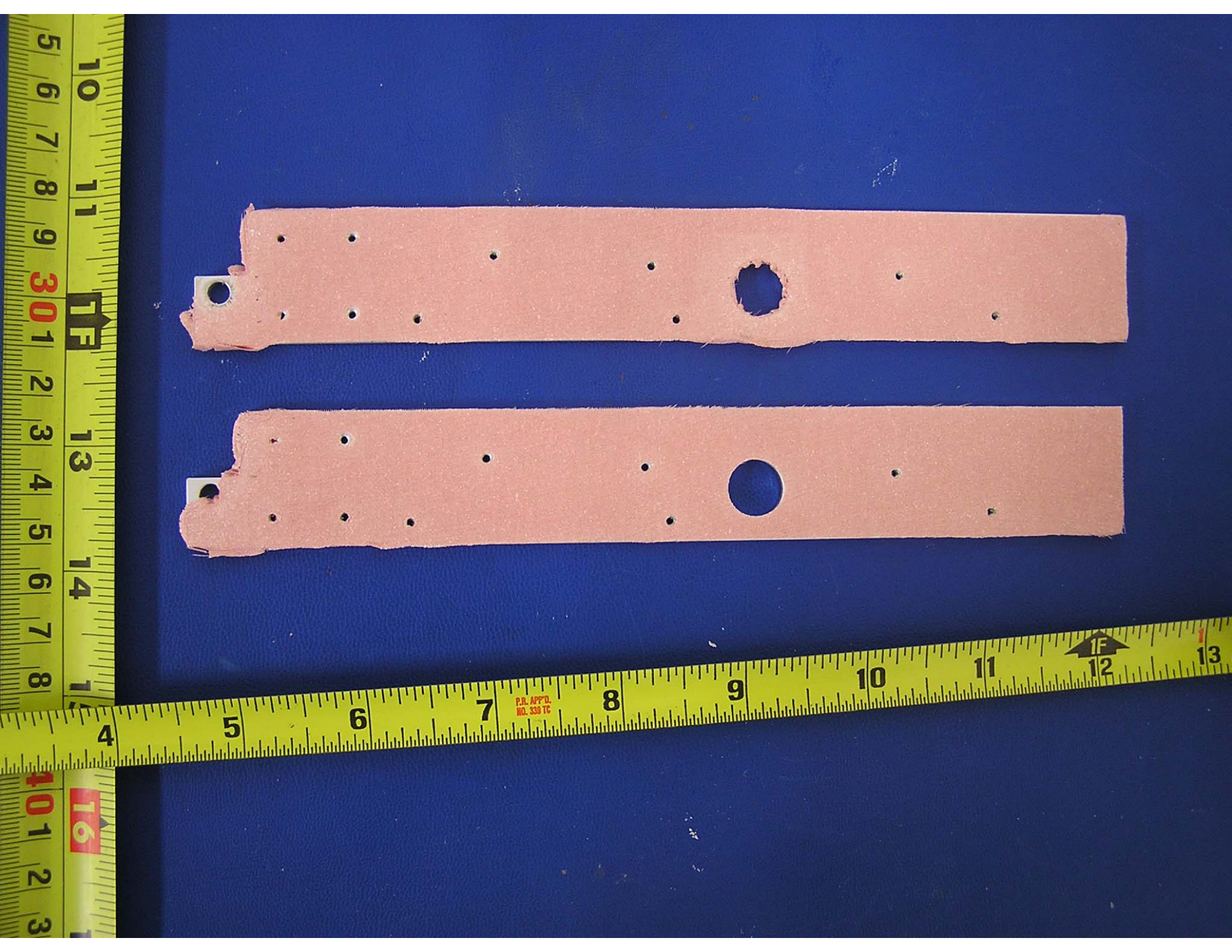
P.R. APP'D.
NO. 330 TC



5 6 7 8 9 10 11 12 13 14 15
10 11 12 13 14 15
TF
301
2 3 4 5 6 7
13 14 15
5 6 7 8 9 10 11 12 13
5 6 7 8 9 10 11 12 13
401
16
1 2 3

4 5 6 7 8 9 10 11 12 13
P.R. APP'D.
NO. 339 TC
TF
12
13





Top strip of perforated cardboard with a white tab and a large irregular hole.

Bottom strip of perforated cardboard with a white tab and a large circular hole.

5 6 7 8 9 10 11 12 13 14 15
301 TF
16

P.R. APP'D.
NO. 333 TC