

MOTOROLA IN CONFIDENCE

SECTION 3: Photographs

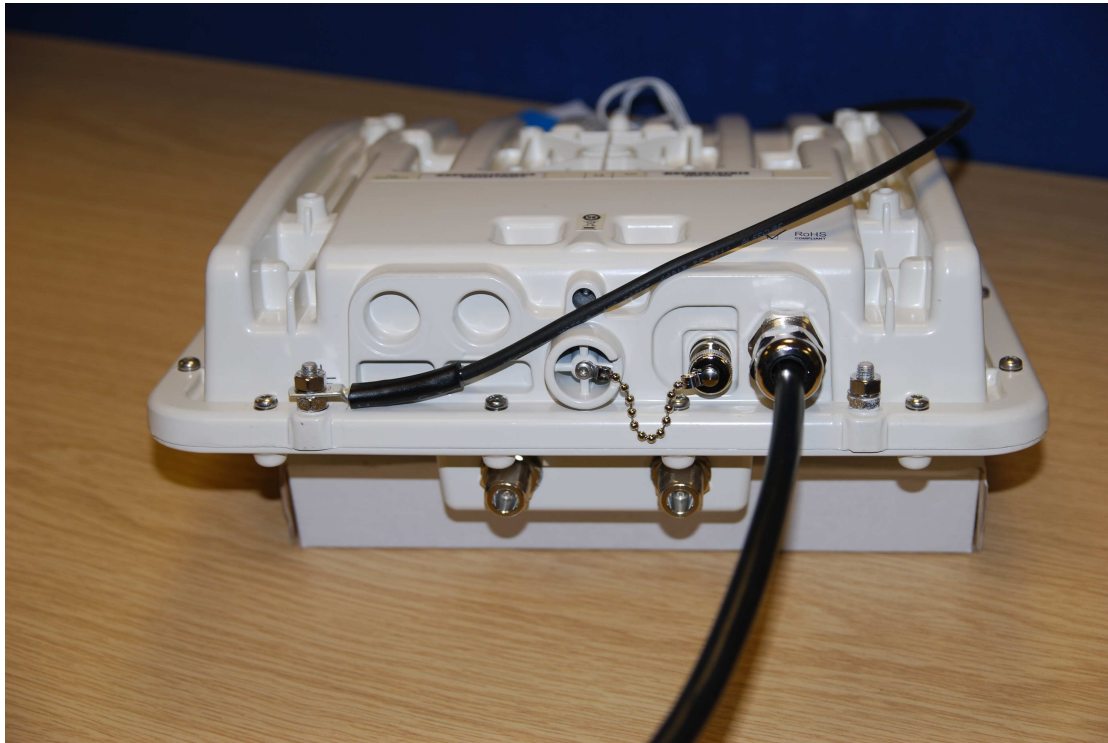


Figure 1: PTP 5xx00 terminal showing all interface connectors.

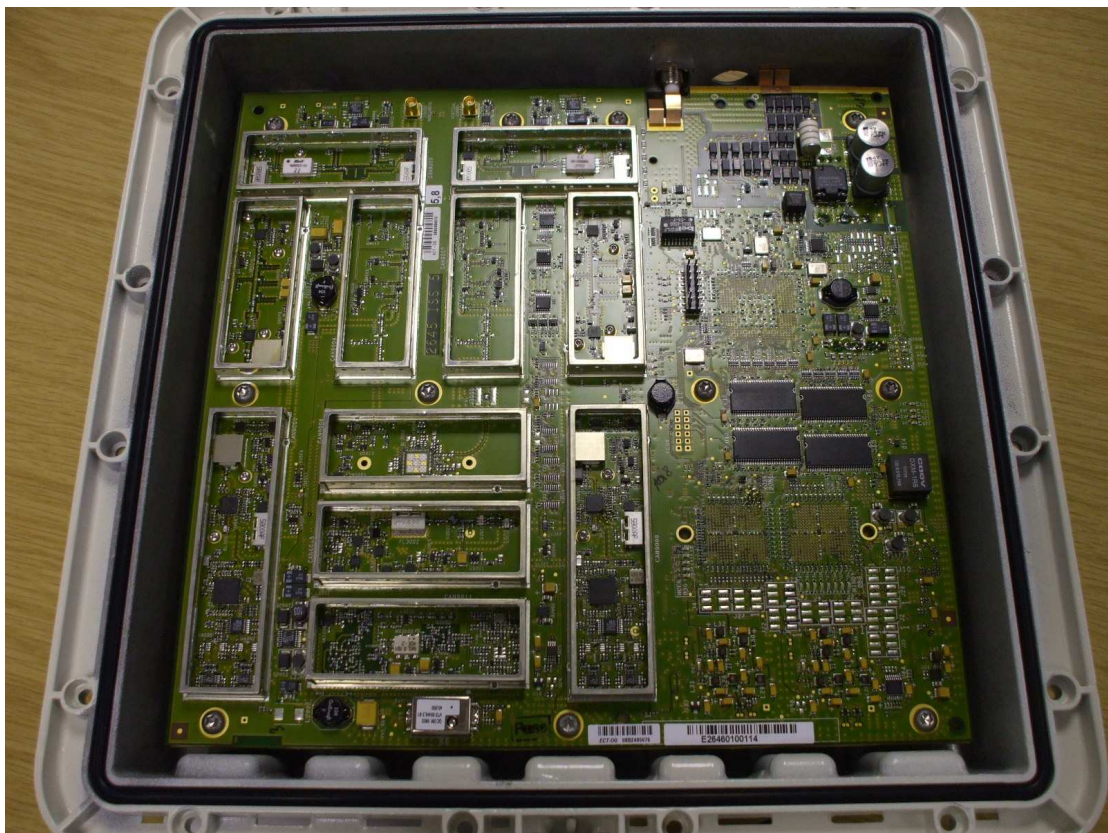


Figure 2: PTP5xx00 with cover plate and screening cans removed to show internal assembly.

MOTOROLA IN CONFIDENCE



Figure 3: PTP5xx00 with cover plate and screening cans removed to show internal assembly.

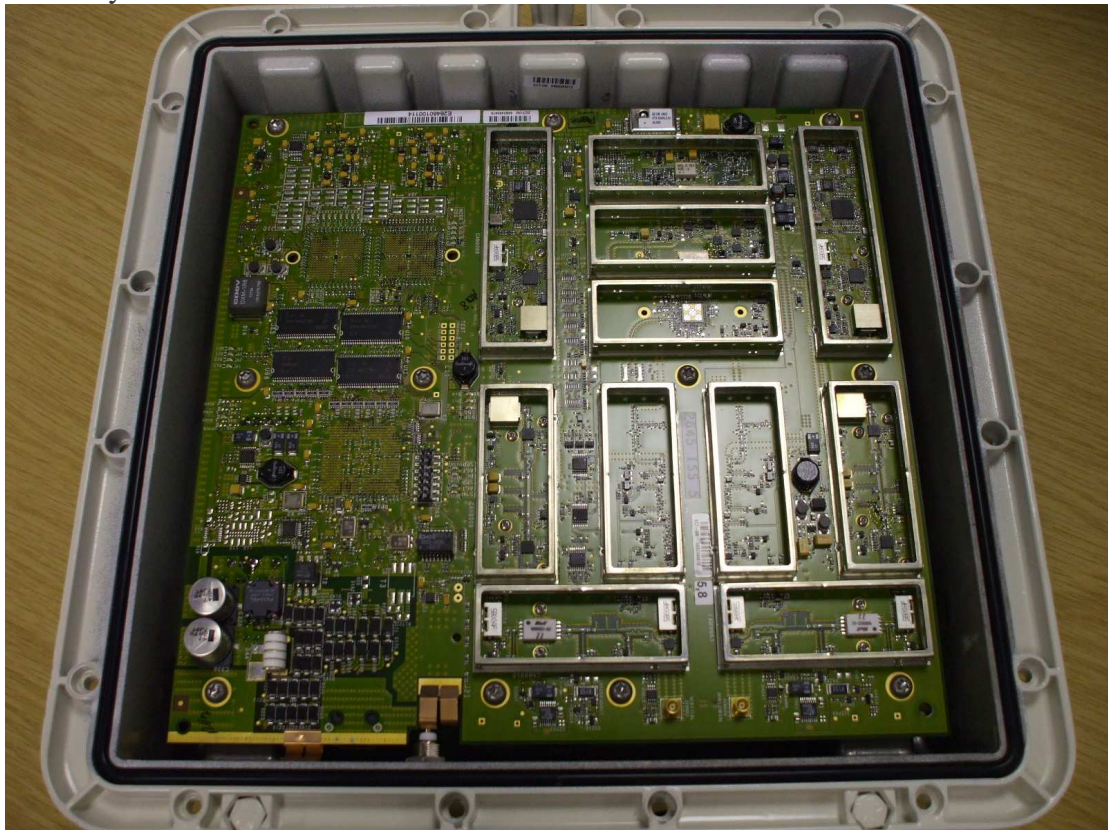


Figure 4: PTP5xx00 with cover plate and screening cans removed to show internal assembly

MOTOROLA IN CONFIDENCE

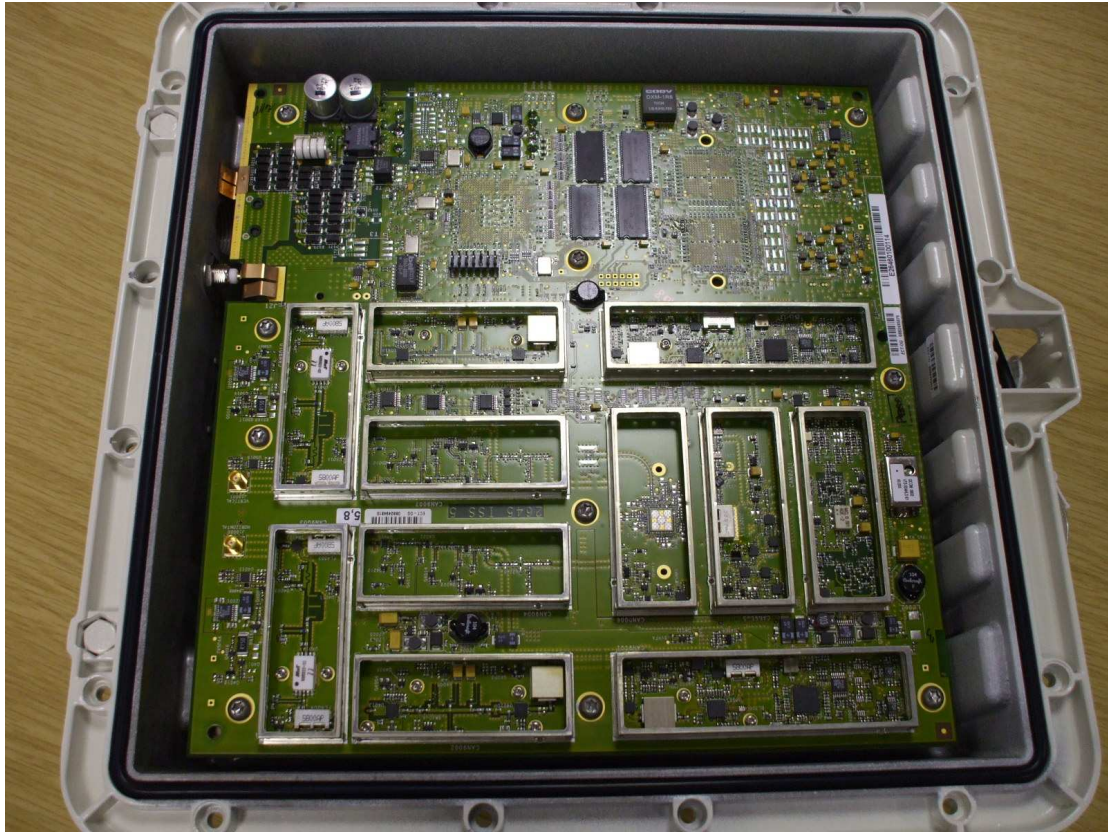


Figure 5: PTP5xx00 with cover plate and screening cans removed to show internal assembly

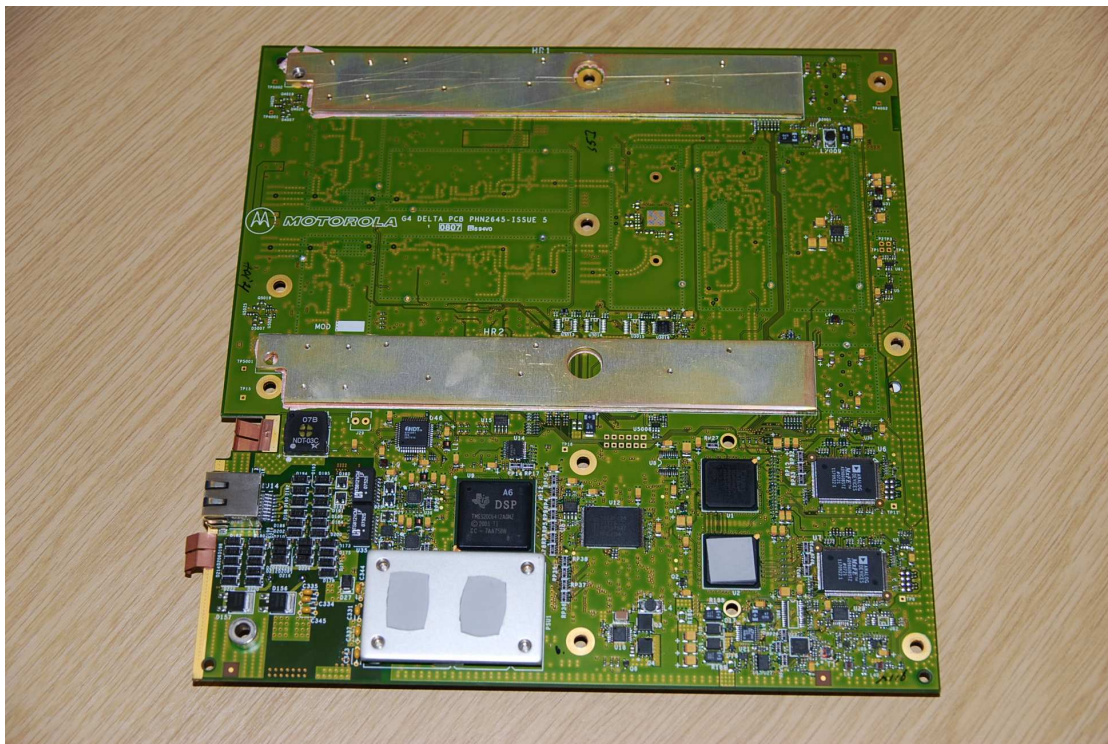


Figure 6: Rear of printed circuit board as used in all models.



Figure 7: Connectorised version with front antenna connector plate removed.



Figure 8: General assembly of connectorised version with circuit board and front antenna connector plate removed.

MOTOROLA IN CONFIDENCE

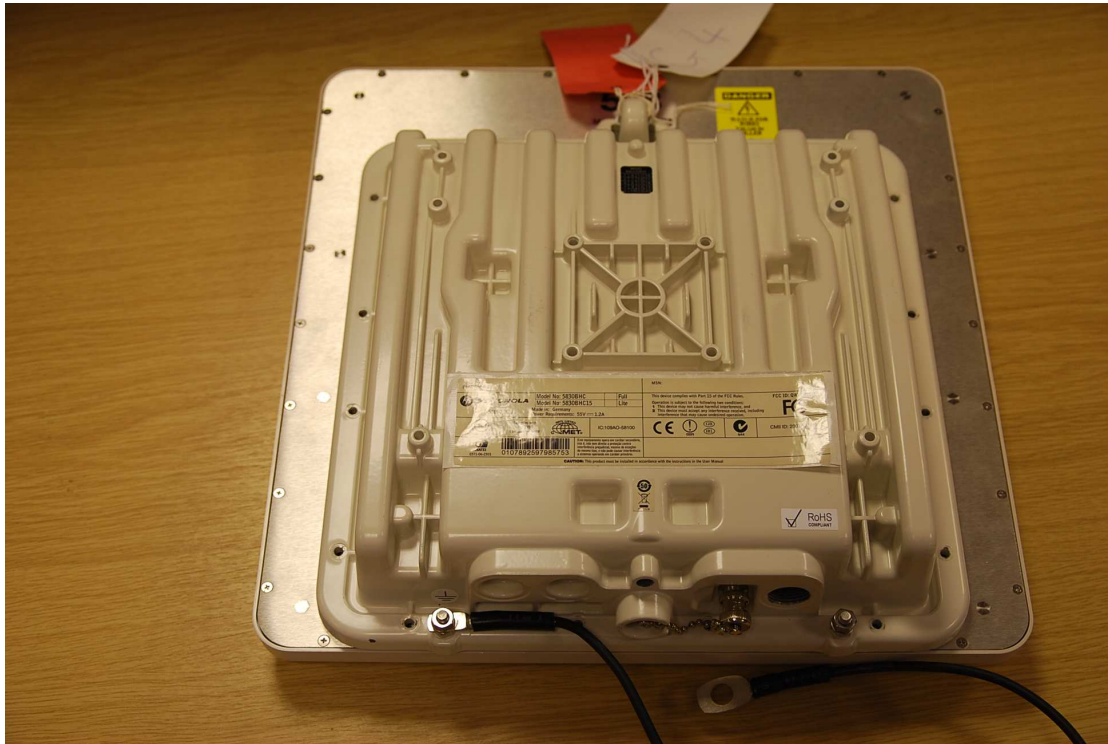


Figure 9: Rear view of radio with MARS integrated antenna fitted and showing position of model label.



Figure 10: MARS Inc Antenna rear view, showing flying lead interconnects to radio.



Figure 11: Front view of Integrated antenna version with antenna disconnected.



Figure 12: MARS Inc Antenna used for both 5.4 and 5.8GHz Integrated antenna versions, front view of radome.