



## **PTP49600 Internal and External Photographs**

Ref: phn-1333

### SECTION 3: Photographs

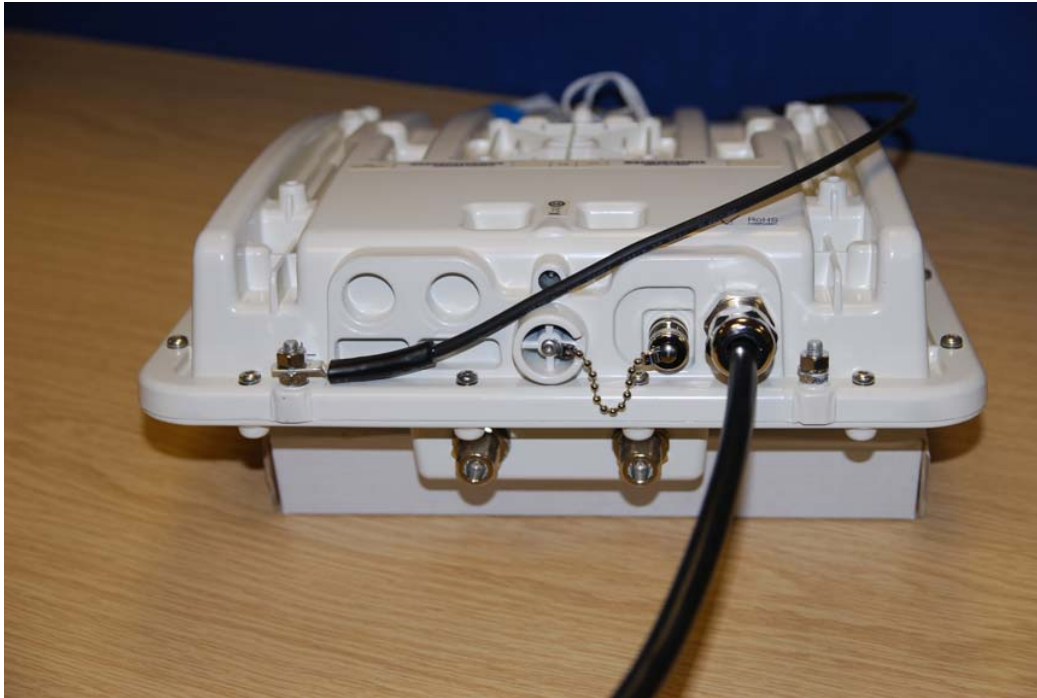


Figure 1: PTP 49600 terminal showing all interface connectors.



Figure 2: Generic Picture to show Position of FCC/IC Labels



Figure 3: PTP49600 with Connector Plate removed to show internal assembly.

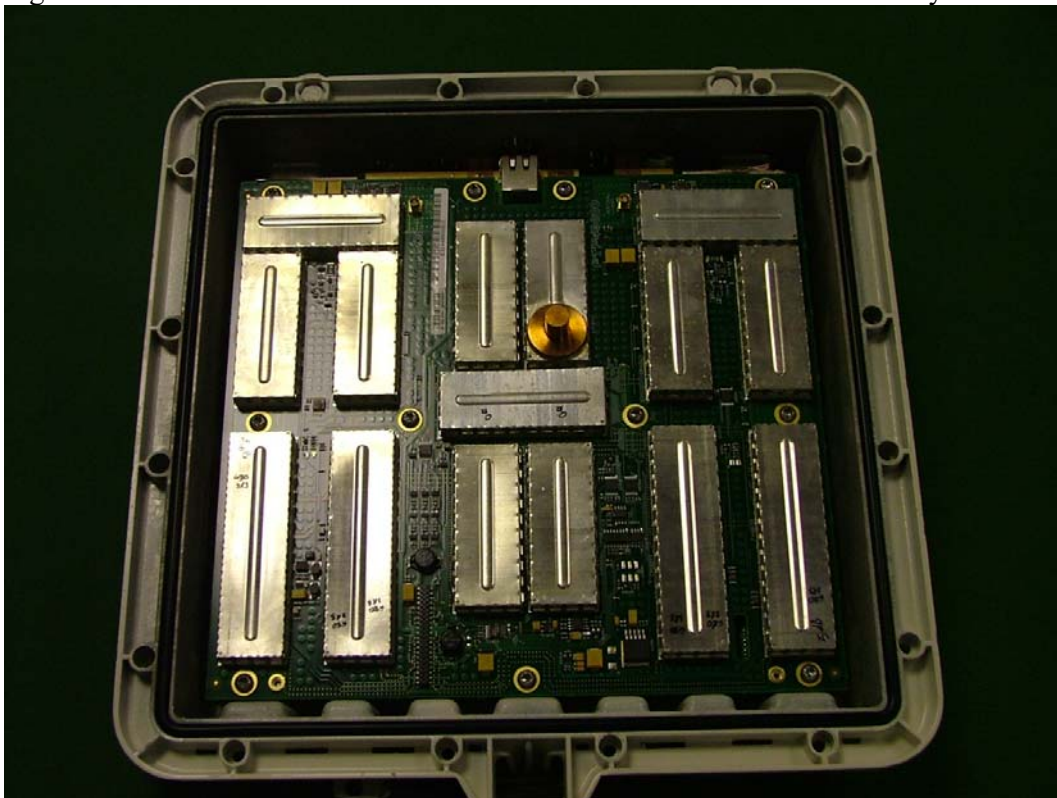


Figure 4: PTP49600 Connector Plate removed to show internal assembly



Figure 5: PTP49600 with Boards removed to show internal mechanical construction

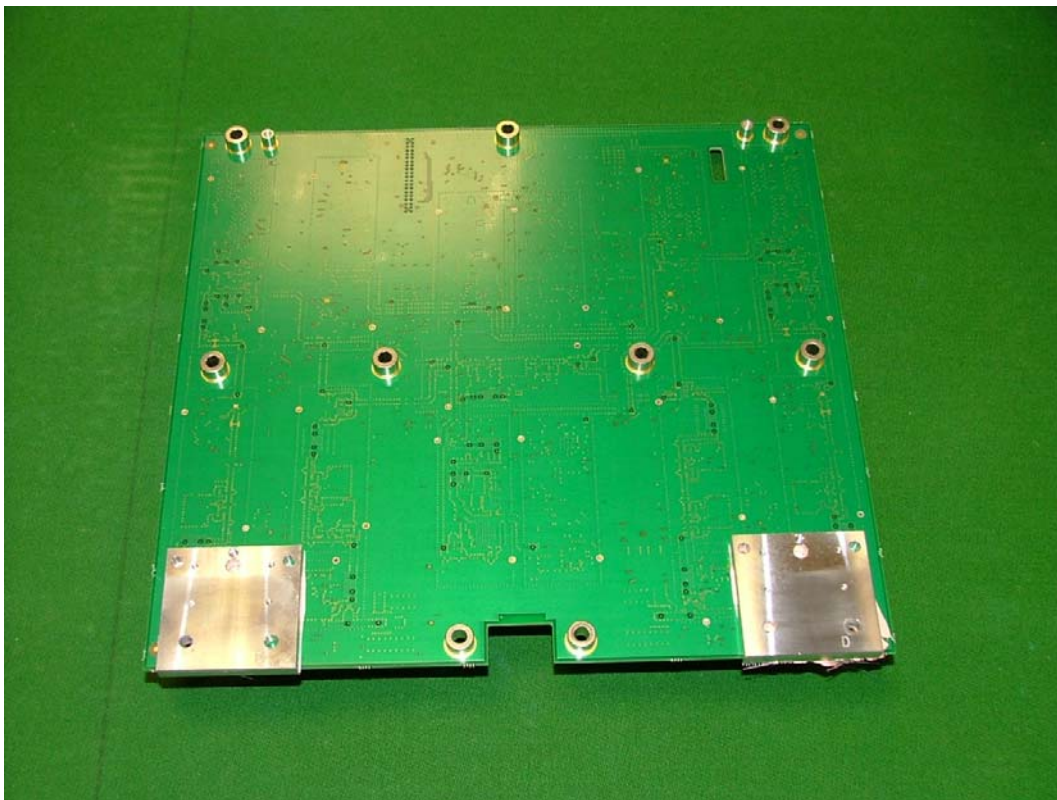


Figure 6: Rear of RF printed circuit board.

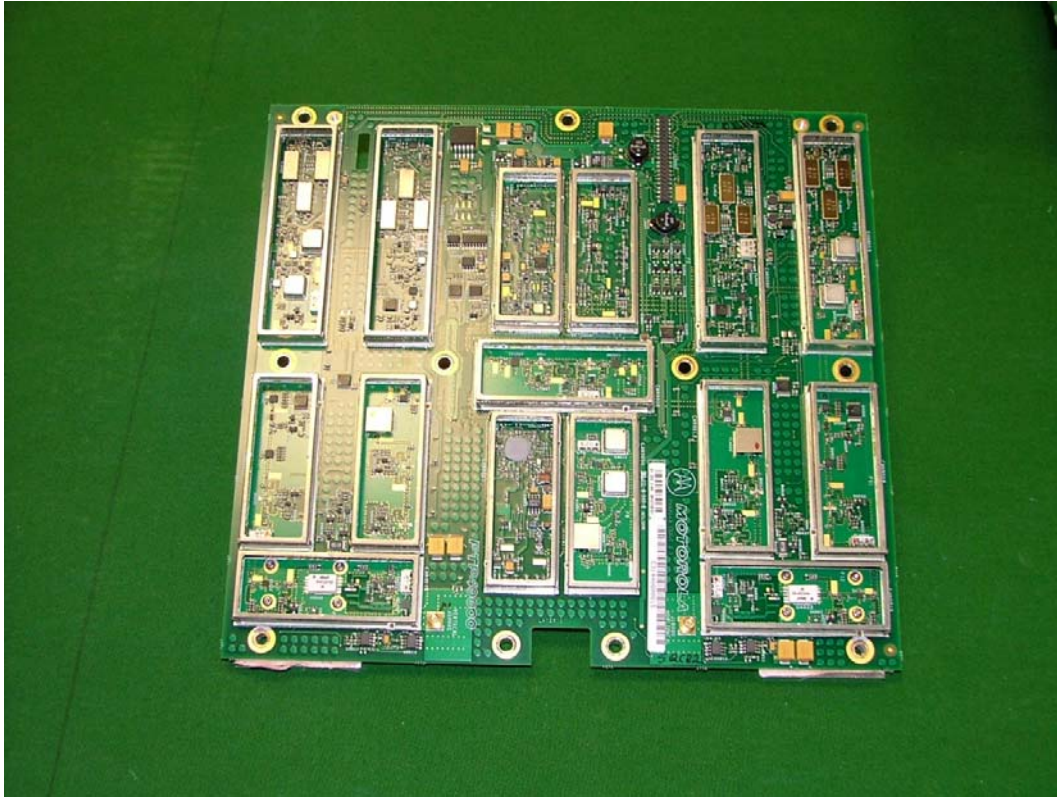


Figure 7: Component Side of RF Card with Screening Cans removed

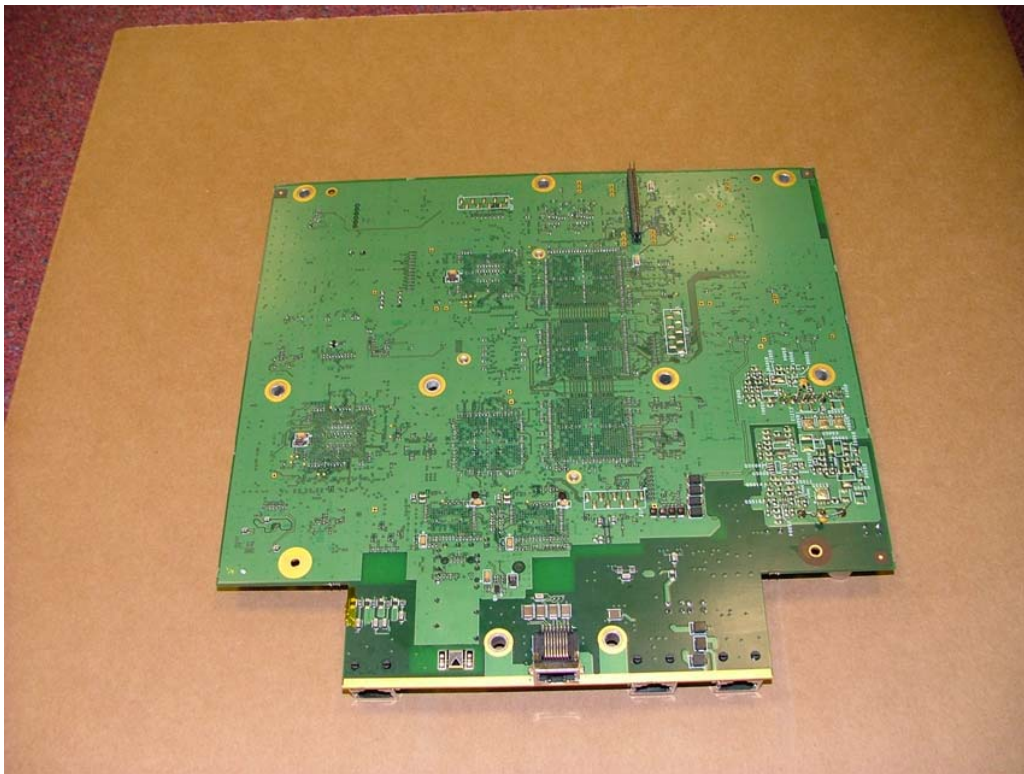


Figure 8: Digital Card, Rear side.



Figure 9: Digital Card Component Side (shown attached to RF Card).

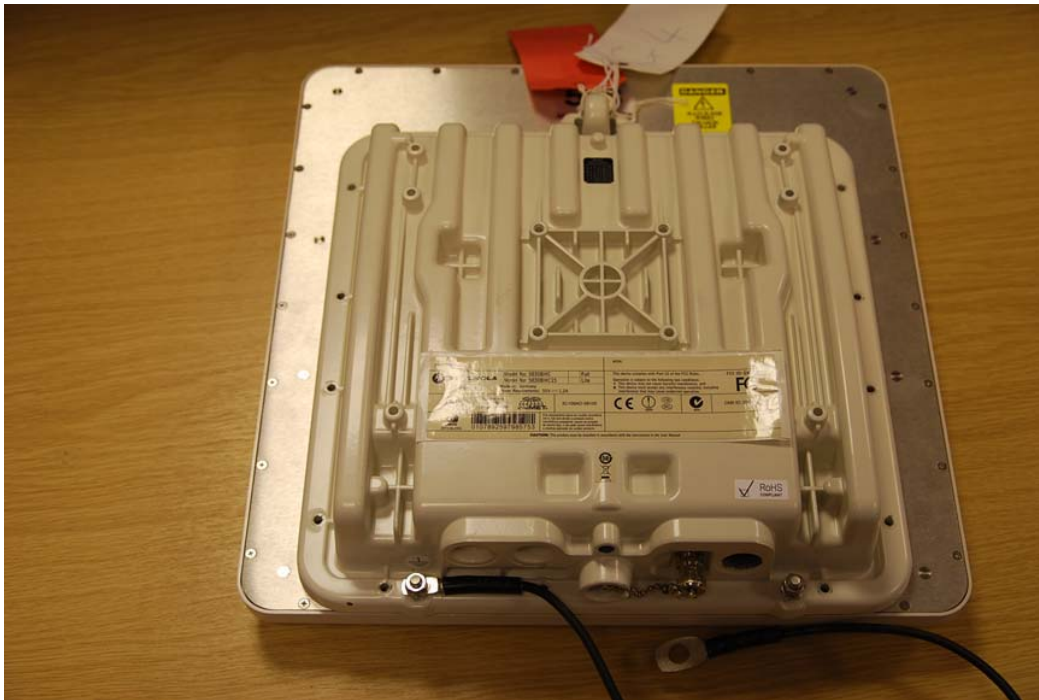


Fig 10: Sample View showing Integrated Antenna fitted and Label Position



Figure 11: Integrated Antenna rear view.



Figure 11: Front view of Integrated antenna.



Figure 12: PIDU External View



Figure 13: PIDU PCB TopView





Figure 14: PIDU Bottom of PCB