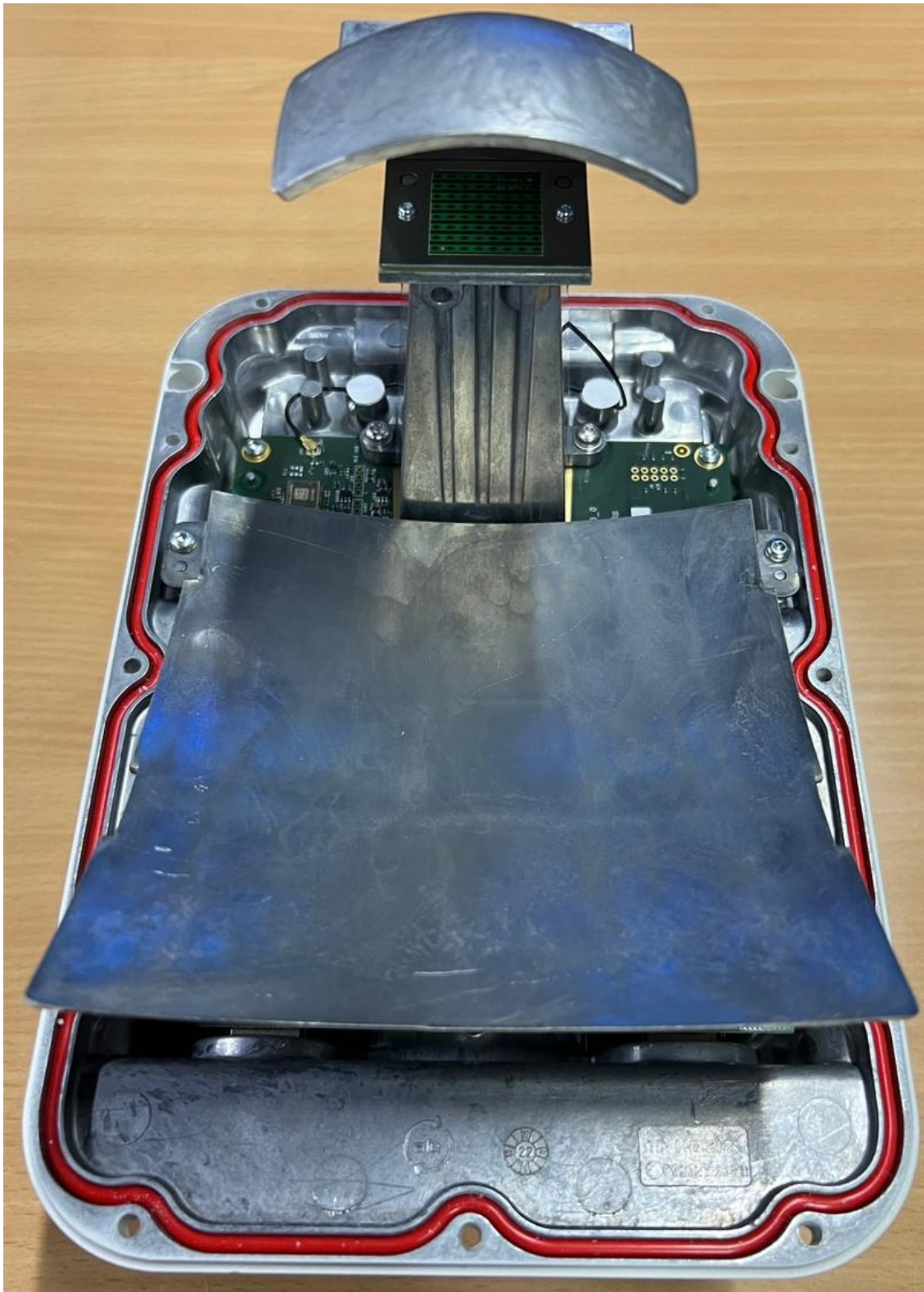




60 GHz cnWave V2000 Radome Removed Top View

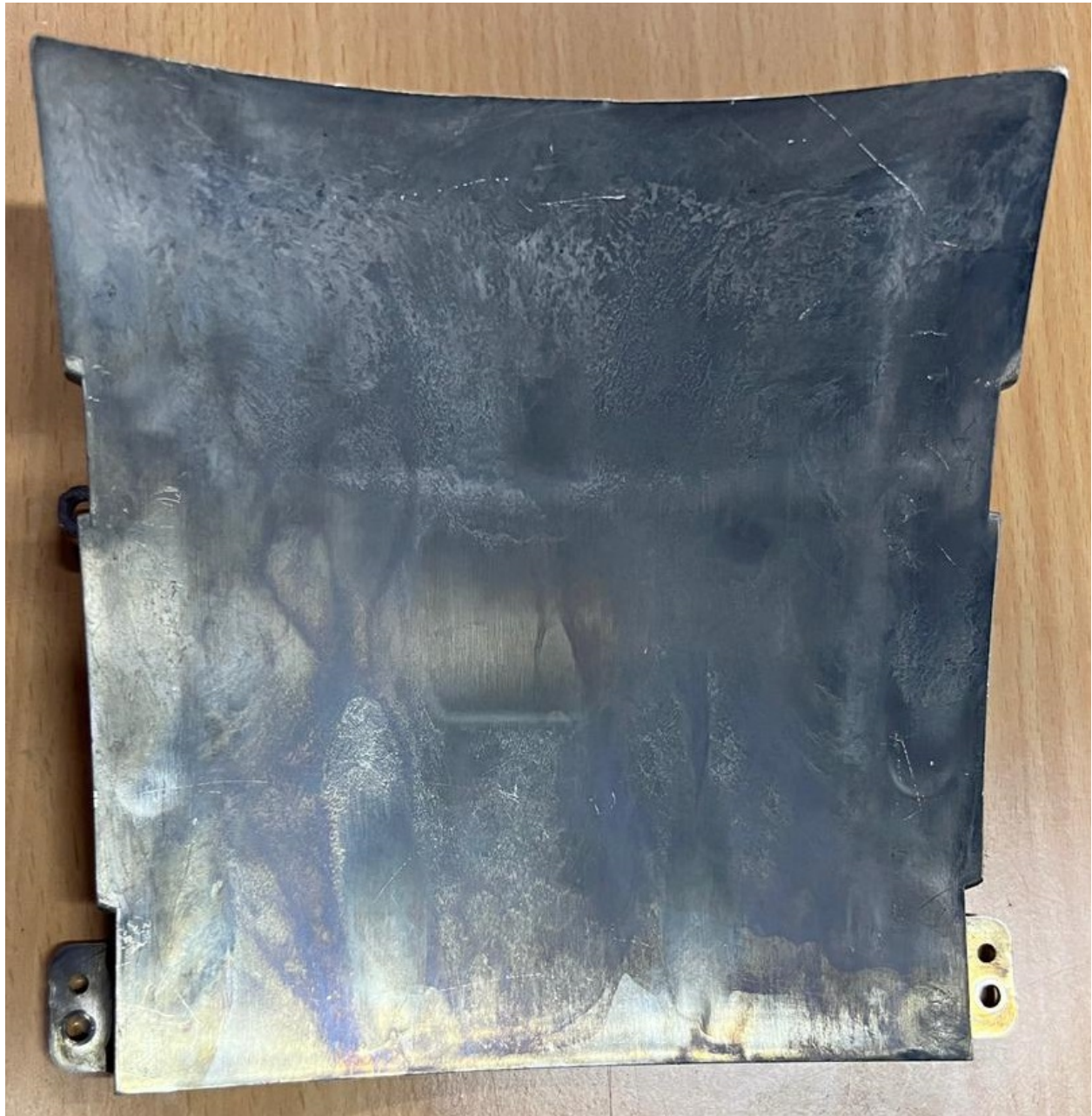


60 GHz cnWave V2000 Radome Removed Bottom View





60 GHz cnWave V2000 Main Reflector Removed Bottom View



60 GHz cnWave V2000 Main Reflector Front View



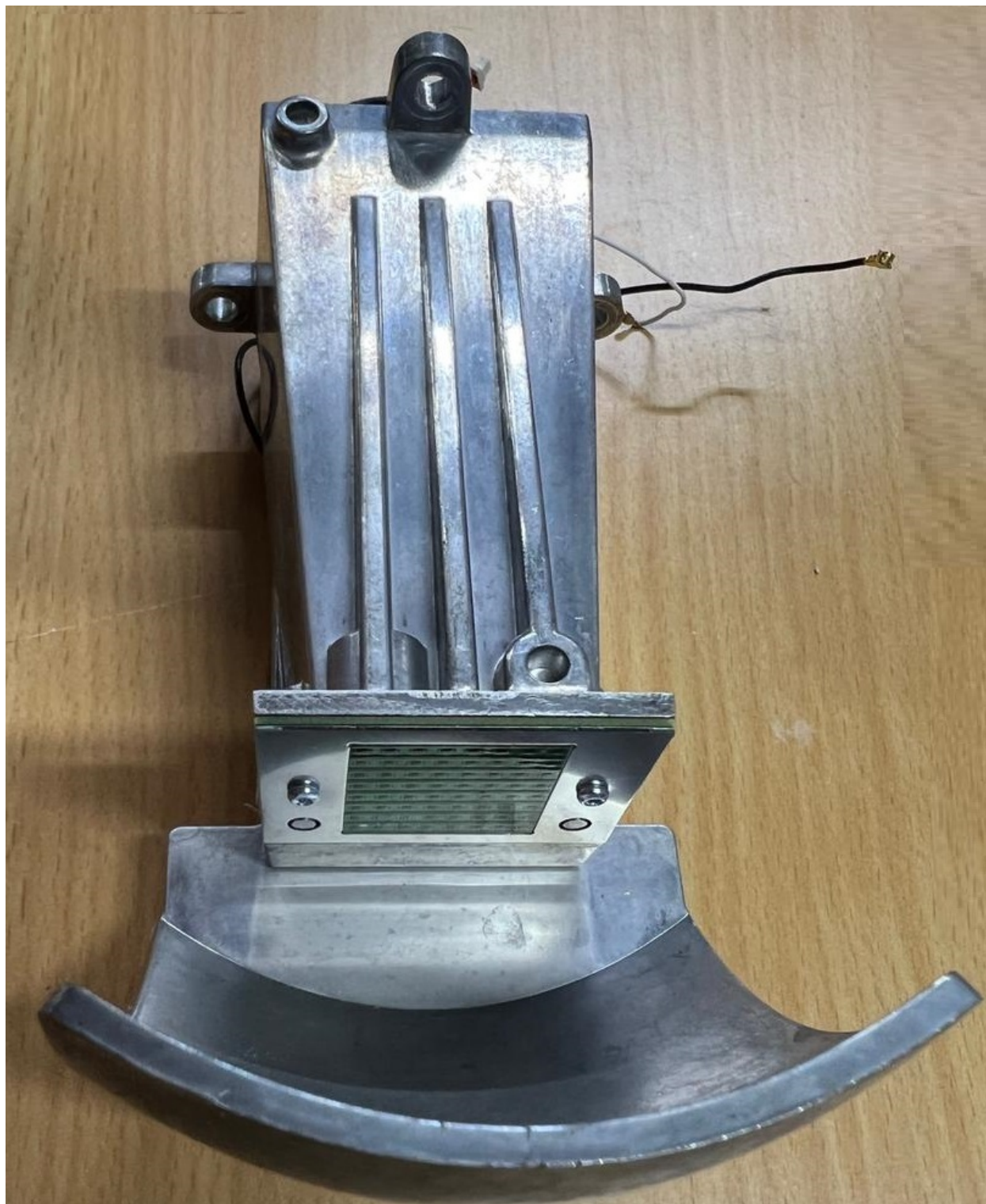


60 GHz cnWave V2000 Main Reflector Rear View



60 GHz cnWave V2000 GPS Antenna View





60 GHz cnWave V2000 RF Tile Holder with Sub-Reflector and RF Tile Bottom View



60 GHz cnWave V2000 RF Tile Holder with Sub-Reflector and RF Tile Left Hand Side View





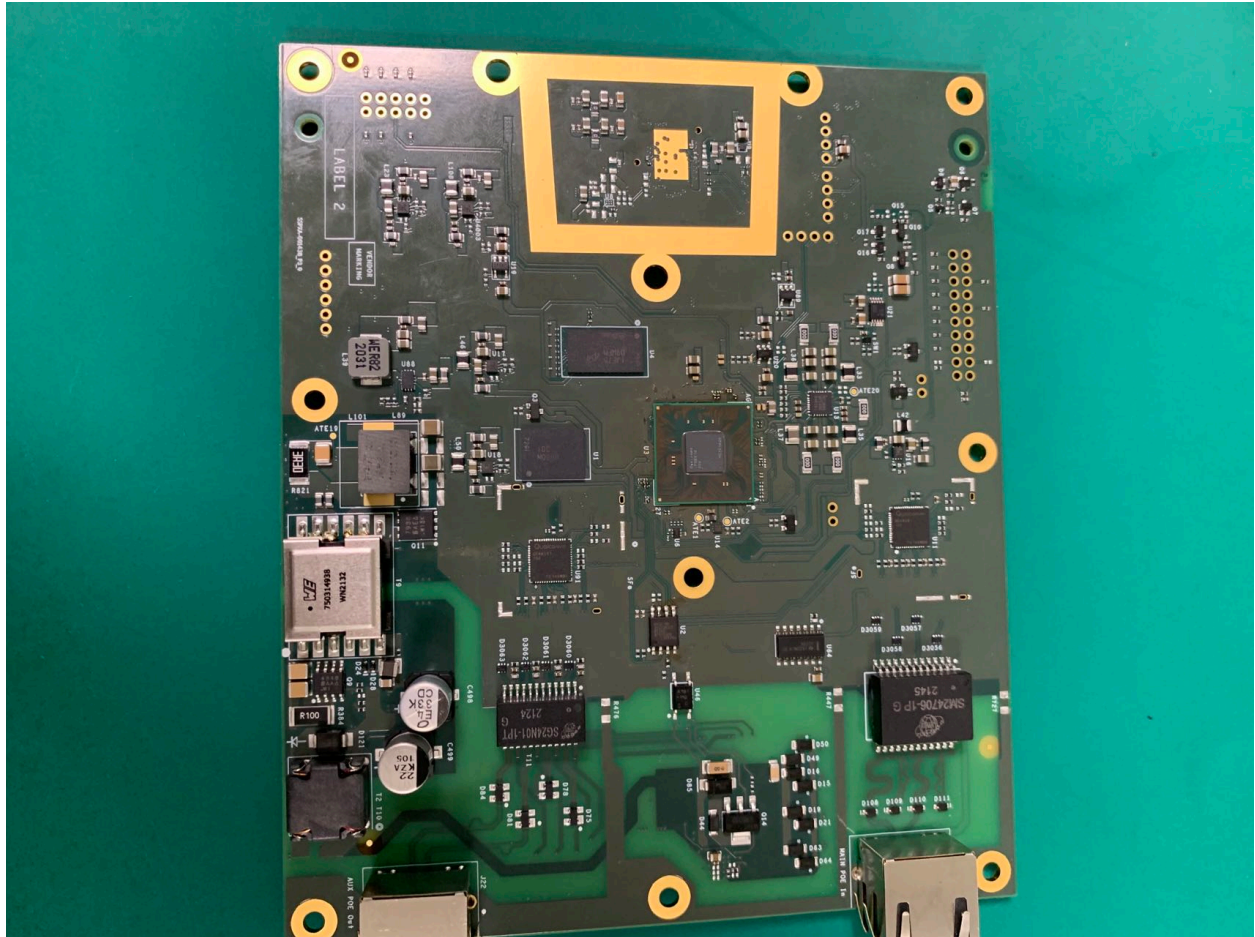
60 GHz cnWave V2000 RF Tile Holder with Sub-Reflector and RF Tile Right Hand Side View



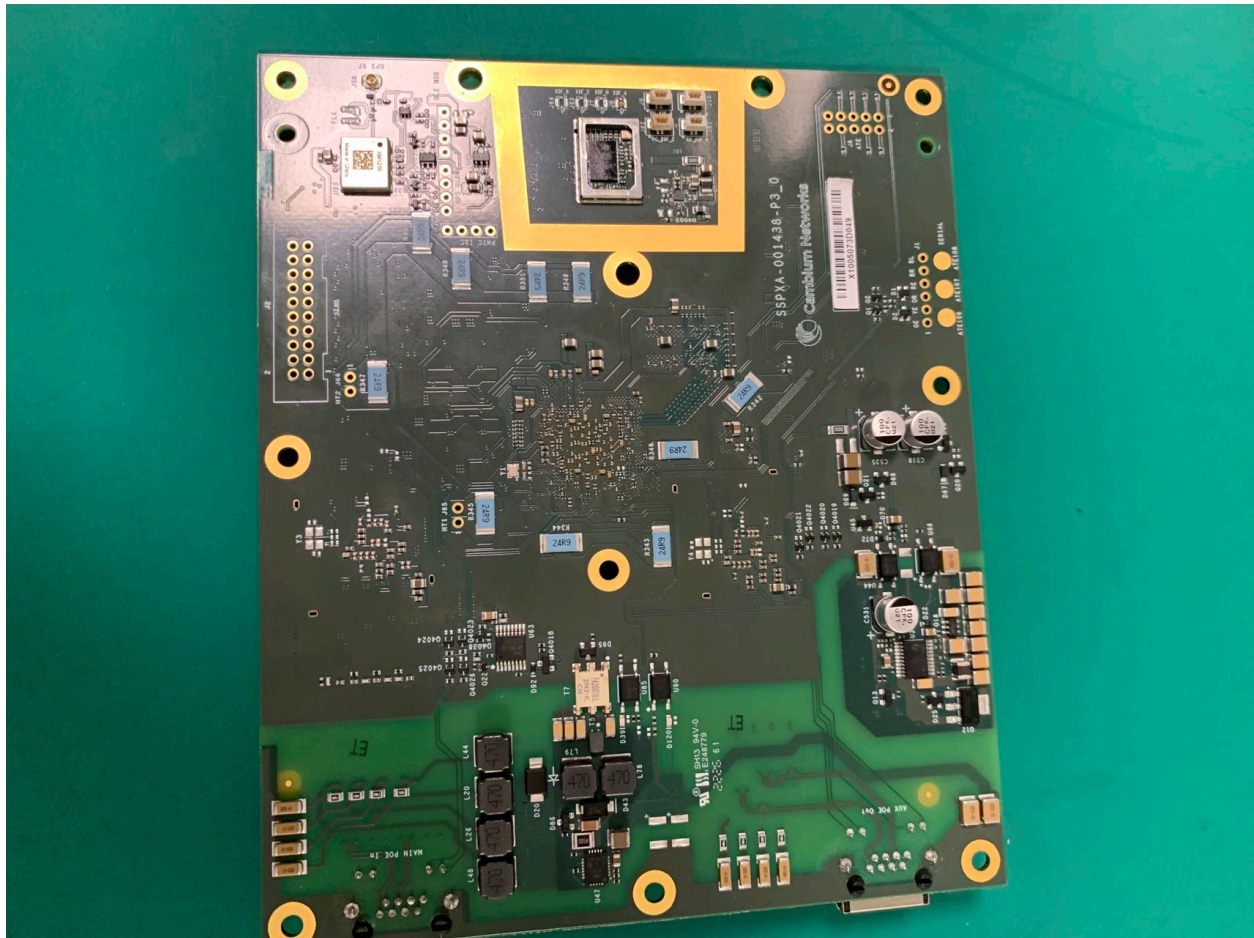


60 GHz cnWave V2000 PCBA SSAXA-001005 in Casting



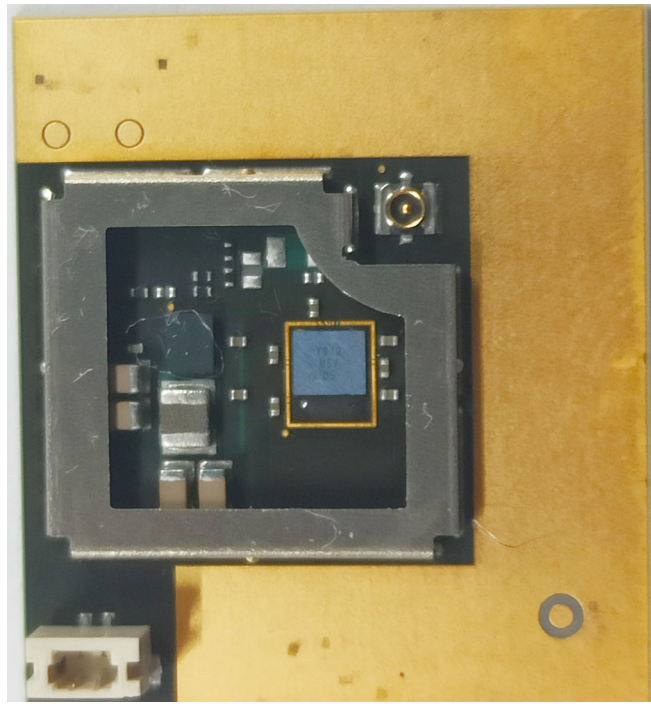


60 GHz cnWave V2000 PCBA SSAXA-001005 Top View

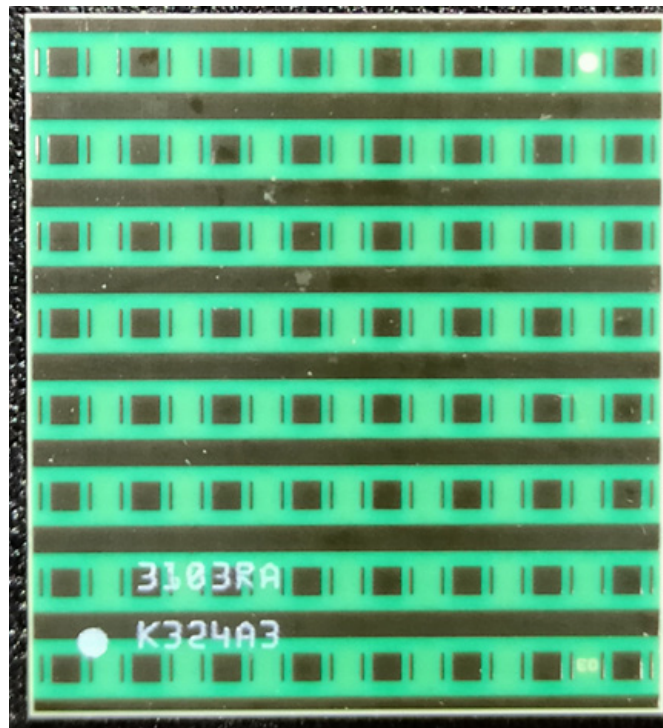


60 GHz cnWave V2000 SSAXA-001005 PCBA Bottom View

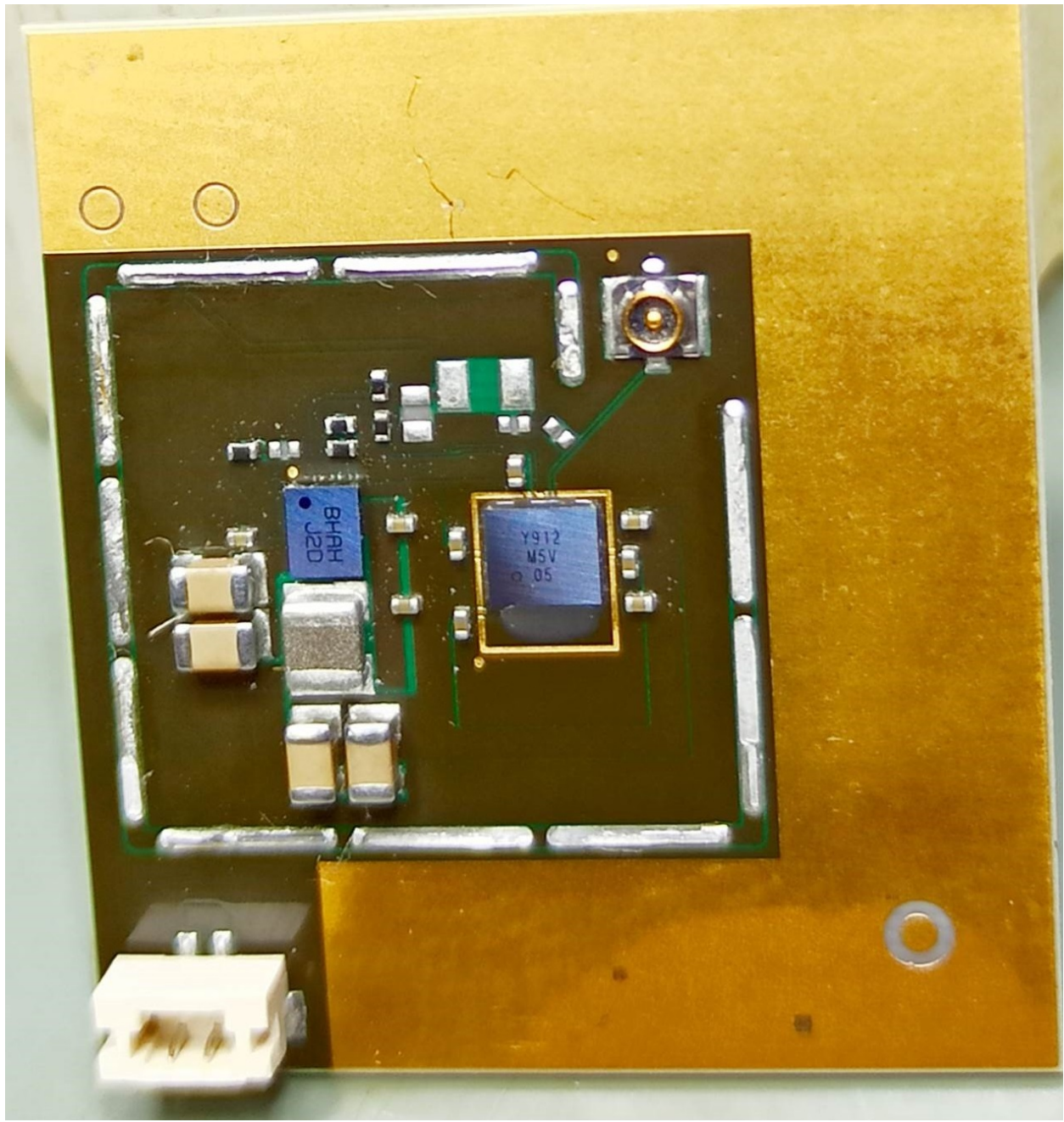




SSPXA-001326 SWL-QD46 RF Tile Rear View



SSPXA-001326 SWL-QD46 RF Tile Front (Antenna) View



SSPXA-001326 SWL-QD46 RF Tile Rear View (Can Removed)