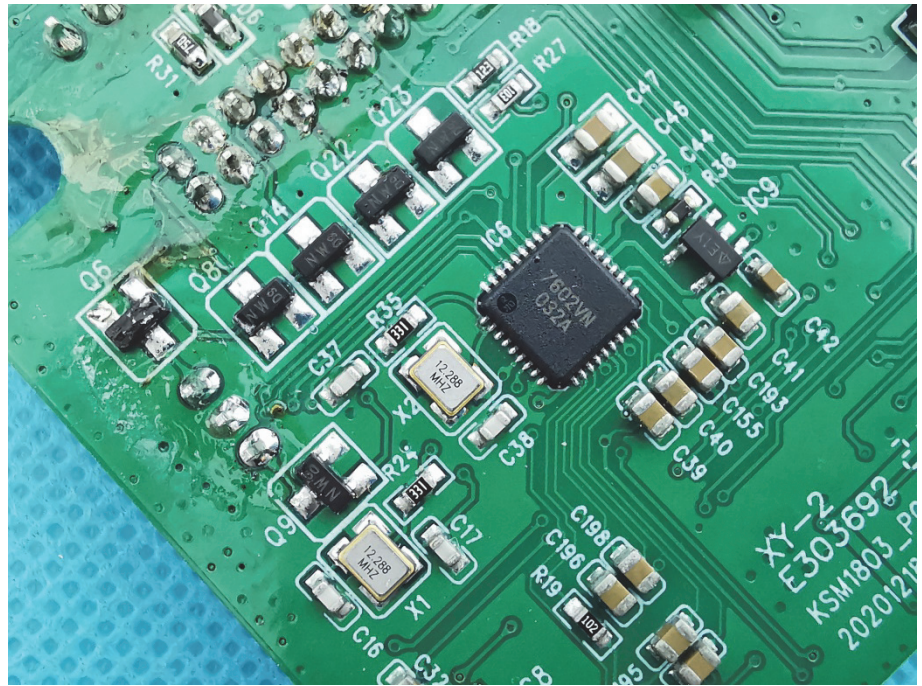
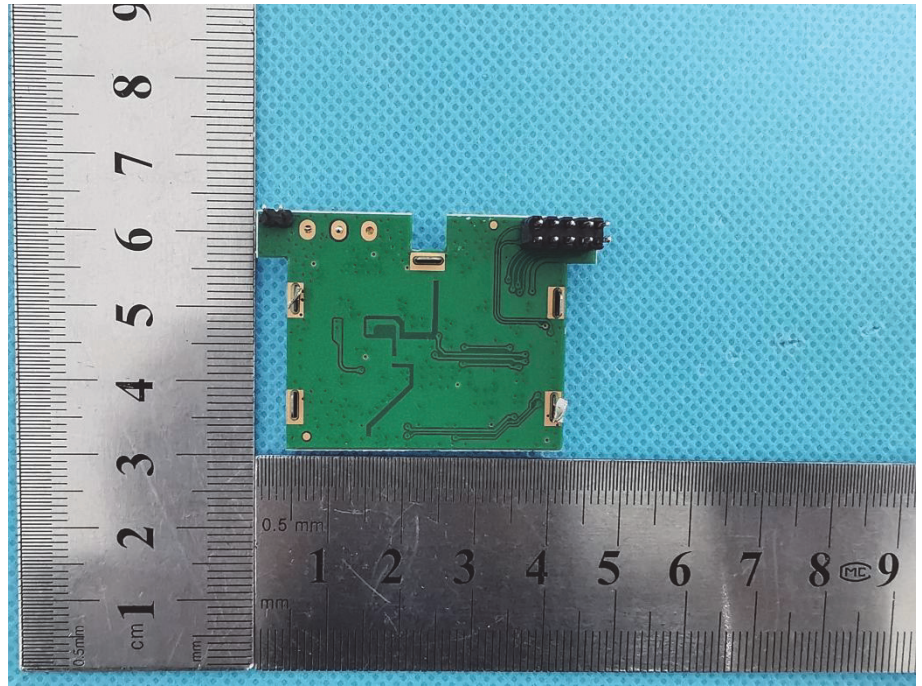
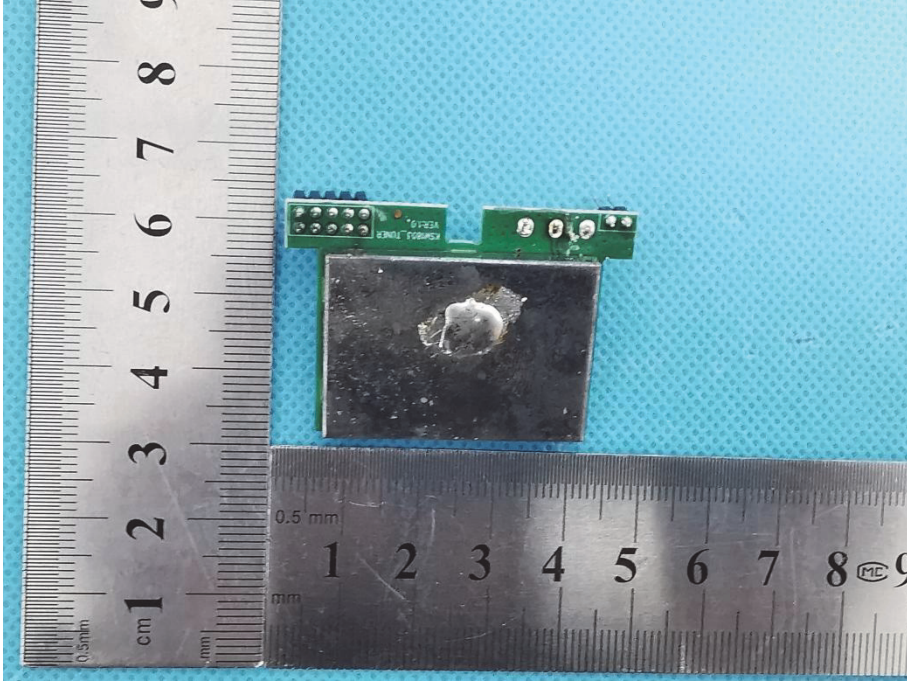
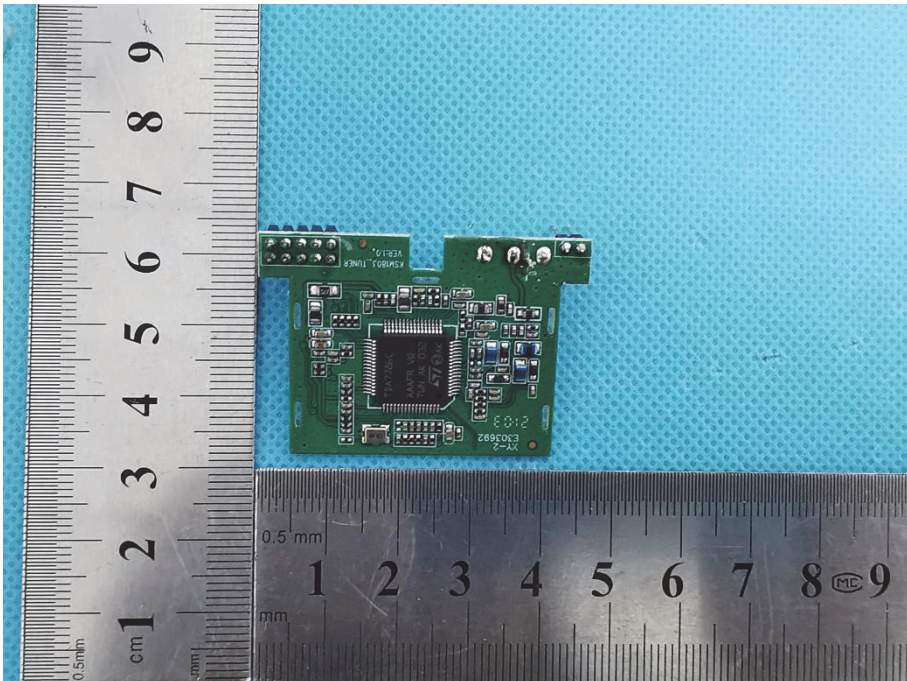


Solder  
Board-Component View  
10

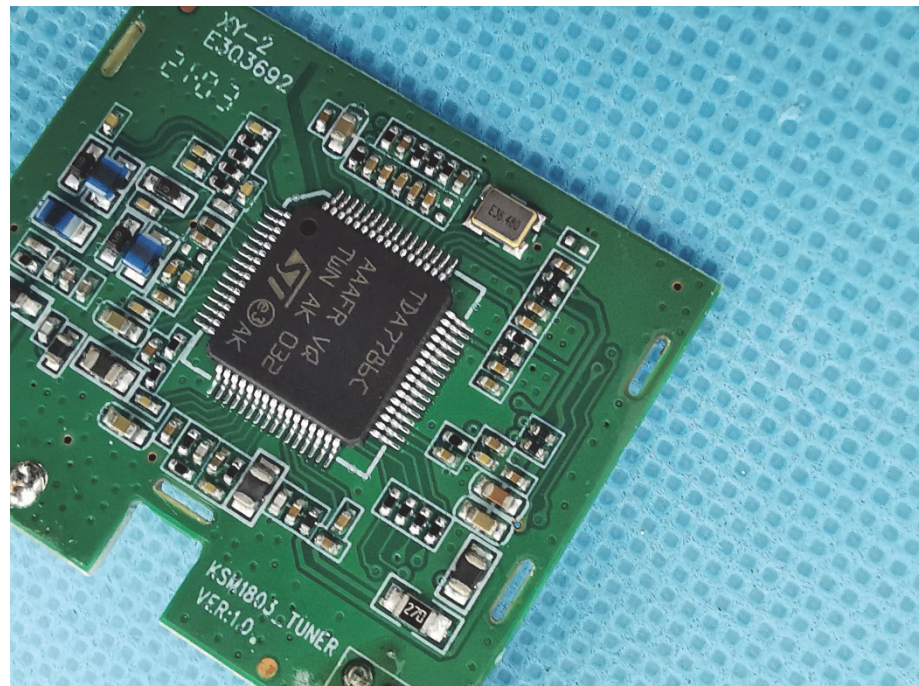


Solder  
Board-Component View  
11



<p style="text-align: center;"><b>Solder Board-Component View 12</b></p>	 <p>A photograph showing a small green PCB component with a circular solder joint on its surface. The component is placed on a blue textured background. A vertical ruler on the left and a horizontal ruler at the bottom provide scale. The vertical ruler shows centimeters from 1 to 8. The horizontal ruler shows millimeters from 1 to 9, with a 0.5 mm scale also visible.</p>
<p style="text-align: center;"><b>Solder Board-Component View 13</b></p>	 <p>A photograph showing the same green PCB component from a different perspective, revealing its internal components and traces. The component is placed on a blue textured background. A vertical ruler on the left and a horizontal ruler at the bottom provide scale. The vertical ruler shows centimeters from 1 to 9. The horizontal ruler shows millimeters from 1 to 9, with a 0.5 mm scale also visible.</p>

**Solder  
Board-Component View  
14**



**Antenna View**

