

FCC RF EXPOSURE REPORT

FCC ID: QWHDW20R

Project No. : 1712C210B
Equipment : Wireless Systems
Brand Name : KLARK TEKNIK
Test Model : DW 20R
Series Model : N/A
Applicant : MUSIC Tribe Manufacturing PH Ltd.
Address : 17A Brunswick Street Hamilton HM 10 Bermuda
Manufacturer : MUSIC Tribe Manufacturing PH Ltd.
Address : 17A Brunswick Street Hamilton HM 10 Bermuda
Factory : Zhongshan Eurotec Electronics Ltd.
Address : No.10 Wanmei Road, South China Modern Chinese Medicine Park,
Nanlang Town, Zhongshan City, Guangdong Province, P.R. China
Date of Receipt : Apr. 01, 2020
Date of Test : Apr. 02, 2020 ~ Jun. 19, 2020
Issued Date : Jul. 03, 2020
Report Version : R00
Test Sample : Sample No.: DG20200420196
Standard(s) : FCC Guidelines for Human Exposure IEEE C95.1 & FCC Part 2.1091
FCC Title 47 Part 2.1091, OET Bulletin 65 Supplement C

The above equipment has been tested and found compliance with the requirement of the relative standards by BTL Inc.

Vincent Tan

Prepared by : Vincent Tan

Ethan Ma

Approved by : Ethan Ma



Certificate #5123.02

Add: No.3, Jinshagang 1st Road, Shixia, Dalang Town, Dongguan, Guangdong, China.

Tel: +86-769-8318-3000

Web: www.newbtl.com

REPORT ISSUED HISTORY

Report Version	Description	Issued Date
R00	Original Issue	Jul. 03, 2020

1. TEST FACILITY

The test facilities used to collect the test data in this report is at the location of No.3,Jinshagang 1st Road, Shixia, Dalang Town, Dongguan, Guangdong, China.

BTL's Test Firm Registration Number for FCC: 357015

BTL's Designation Number for FCC: CN1240

2. MPE CALCULATION METHOD

Calculation Method of RF Safety Distance:

$$S = \frac{PG}{4\pi r^2} = \frac{EIRP}{4\pi r^2}$$

where:

S = power density

P = power input to the antenna

G = power gain of the antenna in the direction of interest relative to an isotropic radiator


R = distance to the center of radiation of the antenna

Table for Filed Antenna

Group 1

Ant.	Brand	Model Name	Antenna Type	Connector	Gain (dBi)
1	Zhigaoda	323032-25532-1R	Dipole	N/A	5

Group 2

Ant.	Brand	Model Name	Antenna Type	Connector	Gain (dBi)
1	 ALEAD technology	AT-02-5-A80617H1-190	Dipole	N/A	5

Note:

Equipment has 2 group antennas, group 1 and group 2 are same type antenna, only differ in brand and model name. Only transmitter and Receiver spurious emissions recorded the test results for two group antennas.

3. TEST RESULTS

Tune up tolerance(dBm)
BT
±2

Antenna Gain (dBi)	Antenna Gain (numeric)	Max. Peak Output Power (dBm)	Max. Peak Output Power (mW)	Power Density (S) (mW/cm ²)	Limit of Power Density (S) (mW/cm ²)	Test Result
5	3.1623	6.28	4.2462	0.00267	1	Complies

Note: The calculated distance is 20 cm.

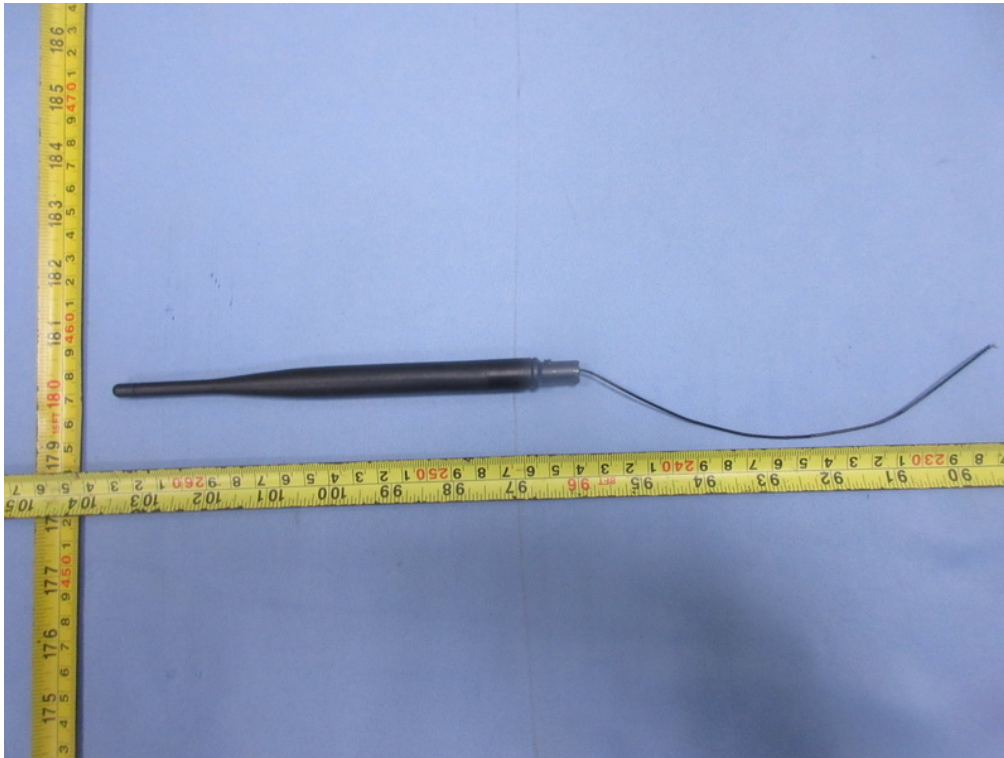
End of Test Report

ATTACHMENT

PHOTOGRAPHS OF EUT





Group 1 Antenna**Group 2 Antenna**

Adapter: S008ACM1200040



Adapter: GPE053A-V120040-Z



