

RC ROBOTOSAUR

Congratulations on your purchase of the RC Robotosaur. Your new friend will take you on adventures doing all kinds of amazing things. He will protect your room too! But beware, he can get a bit cranky and tends to roar when he doesn't get his way! Keep this instruction manual, as it contains important information for future reference.

SAFETY WARNINGS

- Read all safety warnings before use.
- Use this product only for its intended purpose.
- This product has no user serviceable components. Do not disassemble.
- Inspect the product before every use. If the product appears damaged in any manner, discontinue use and discard.
- For indoor use only.

Alkaline Battery Warning:

- Do not mix old and new batteries
- Do not mix alkaline, standard (carbon-zinc), or rechargeable batteries
- Alkaline batteries are recommended. Use only the specified voltage.
- Insert batteries using the correct polarity. Always use, replace, and recharge (if applicable) batteries under adult supervision.
- Do not charge with non-rechargeable batteries.
- Do not short-circuit the supply terminal.
- Do not dispose of batteries in fire, batteries may explode or leak.
- Remove batteries before storing.
- Recycle or dispose of batteries according to federal, state, and local laws.

CONTENTS

NOTE: Images not to scale.

REMOTE

ROBOTOSAUR

CUSTOM USB CABLE

CHARGING YOUR ROBOTOSAUR

Your Robotosaur has a 3.7v 500 mAh rechargeable internal lithium battery. Although it comes with some charge, you need to charge it 60 minutes before use.

1. Plug the included custom USB cable into the tail port and then to a device (laptop) or adapter for a wall outlet.
2. When the red light on the USB turns off, it is fully charged. Store the USB cord.

REMOTE BATTERY INSTALLATION

1. Unscrew and remove the battery compartment cover.
2. Install 3 "AA" 1.5V batteries (not included) as shown in the diagram to the right.
3. Replace the cover and close battery compartment.

PLAY FEATURES/TROUBLESHOOTING

- Hold the POWER button for 3s to turn off remote.
- When red LED flashes, batteries are low. Please replace the remote batteries for optimal performance.
- If remote is not used for 15 minutes, it will auto shut-off. Press the POWER button again to switch back on.
- When blue LED ring on belly is flashing, Robotosaur's rechargeable battery is low. Please plug in using the included USB charging cable to recharge the battery.
- If Robotosaur is awoken from SLEEP and the remote is still on, the remote will pair automatically with Robotosaur. However, in other disconnection situations, please turn off and on both Robotosaur and the remote to ensure the 2 are paired.
- Robotosaur is shipped in Try-Me mode. To activate full play mode, turn Robotosaur off and back on again.

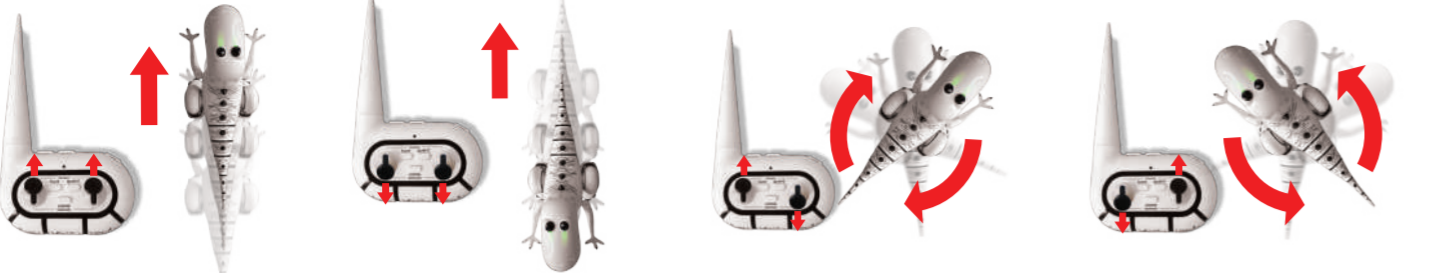
Rechargeable Battery Warning:

- This product contains batteries that non-replaceable.
- There is a risk of fire and personal injury if battery is punctured, damaged or misused.
- Do not dismantle, crush, incinerate or short-circuit battery.
- Never expose battery to extreme temperatures or moisture.
- Keep away from flammable materials and direct sunlight.
- Only charge using the provided charger, cable, and/or adapters.
- Rechargeable battery is only to be charged by an adult.
- Adult Supervision of the battery while it is charging is required
- Allow battery to cool to room temperature before charging.
- Charge on a non-flammable surface and keep away from flammable products
- Discontinue charging if battery becomes hot, swells, smokes, or gives off a strong odor.
- Battery chargers used with the product are to be regularly examined for damage to the cord, plug, enclosure, and other parts, and in the event of such damage, they must not be used until the damage has been repaired.
- Recycle or dispose of battery according to federal, state, and local laws.
- Keep these instructions for future reference.

MAKING YOUR ROBOTOSAUR GO

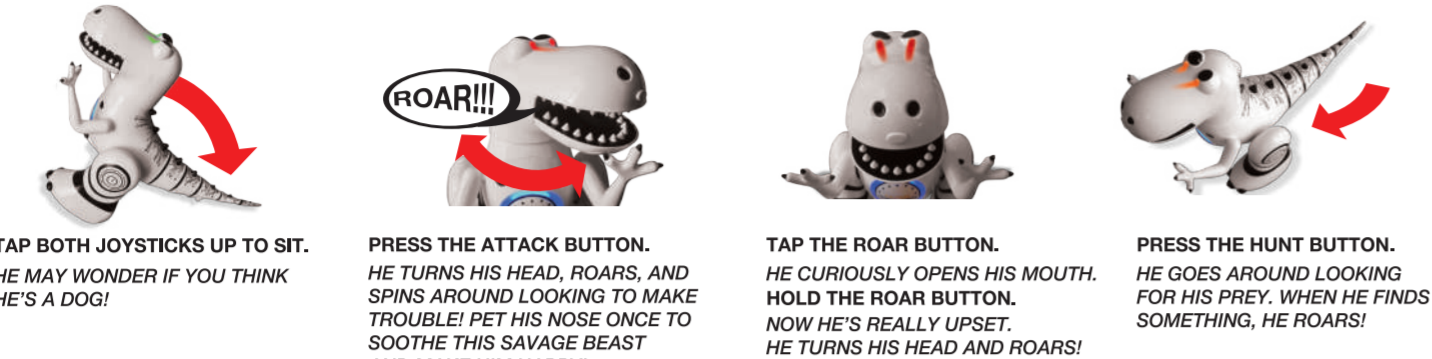
Press the POWER Button on the remote and slide the tail switch ON. When the blue light on your Robotosaur's belly is on and his eyes are green, the remote is connected and he is ready to play.

GO FORWARD GO BACKWARD SPIN CLOCKWISE SPIN COUNTERCLOCKWISE



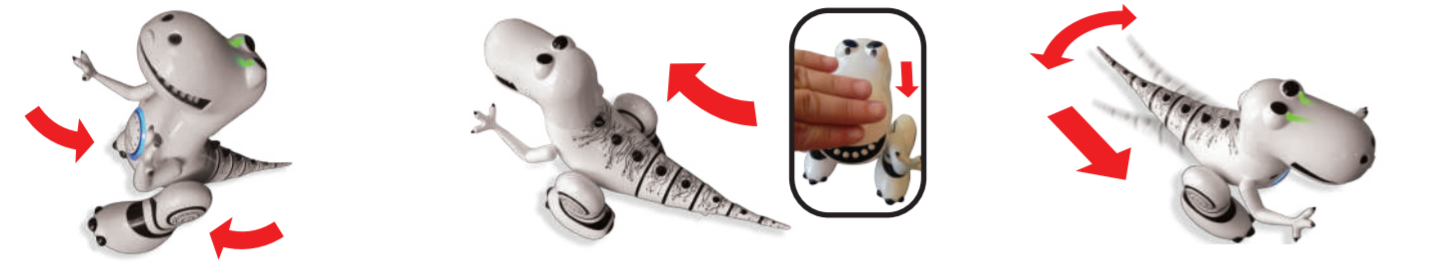
PUSH AND HOLD BOTH JOYSTICKS UP
PUSH AND HOLD BOTH JOYSTICKS DOWN
PUSH AND HOLD THE LEFT JOYSTICK UP AND RIGHT JOYSTICK DOWN
PUSH AND HOLD THE LEFT JOYSTICK DOWN AND RIGHT JOYSTICK UP

SIT ATTACK ROAR HUNT



TAP BOTH JOYSTICKS UP TO SIT. HE MAY WONDER IF YOU THINK HE'S A DOG!
PRESS THE ATTACK BUTTON. HE TURNS HIS HEAD, ROARS, AND SPINS AROUND LOOKING TO MAKE TROUBLE! PET HIS NOSE ONCE TO SOOTHE THIS SAVAGE BEAST AND MAKE HIM HAPPY!
TAP THE ROAR BUTTON. HE CURIOSLY OPENS HIS MOUTH. HOLD THE ROAR BUTTON. NOW HE'S REALLY UPSET. HE TURNS HIS HEAD AND ROARS!
PRESS THE HUNT BUTTON. HE GOES AROUND LOOKING FOR HIS PREY. WHEN HE FINDS SOMETHING, HE ROARS!

STOMP GUARD COME



TAP THE LEFT JOYSTICK UP AND RIGHT JOYSTICK DOWN OR THE RIGHT JOYSTICK UP AND LEFT JOYSTICK DOWN. NOW YOU'VE DONE IT! HE KICKS HIS LEGS BACK AND FORTH IN A PREHISTORIC HIGH TECH RAGE!
PRESS THE GUARD BUTTON OR PET HIS NOSE TWICE. HE SPINS AND LOOKS AROUND FOR SOMETHING TO ATTACK!
FACE THE REMOTE CONTROLLER TO THE ROBOTOSAUR AND HOLD THE COME BUTTON. HE WILL FOLLOW YOU AROUND! PRAISE HIM BY PETTING HIS NOSE AND HE WILL WAG HIS TAIL IN JOY!

SNORE RECHARGE MOOD



YOU WILL KNOW ROBOTOSAUR IS SNORING BECAUSE HIS EYE COLOR TURNS BLUE AND HE MAKES A YAWNING AND SNORING SOUND. ANY OPERATION FROM REMOTE WILL WAKE HIM UP.
IF HE SNORES FOR A LONG TIME (ABOUT 2.5 MINUTES), HE WILL GO INTO SLEEP MODE. TOUCH HIS NOSE TO WAKE HIM, BUT BEWARE THAT SLEEPING CAN TURN HIS SNORE INTO A ROAR!
WHEN THE BLUE LED RING ON BELLY IS FLASHING (INSTANT IN/OUT), IT INDICATE LOW POWER AND NEED TO BE CHARGED
HE CAN BE VERY MOODY. HIS EYES WILL ALWAYS TELL YOU WHAT'S ON HIS MIND!

WARNING: Changes or modifications to this unit not expressly approved by the party responsible for compliance could void the user's authority to operate the equipment. This device complies with Part 15 of the FCC Rules. Operation is subject to the following two conditions: (1) this device may not cause harmful interference, and (2) this device must accept any interference received, including interference that may cause undesired operation.

NOTE: This equipment has been tested and found to comply with the limits for a Class B digital device, pursuant to Part 15 of the FCC Rules. These limits are designed to provide reasonable protection against harmful interference in a residential installation. This equipment generates, uses and can radiate radio frequency energy and, if not installed and used in accordance with the instructions, may cause harmful interference to radio communications. However there is no guarantee that interference will not occur in a particular installation.

If this equipment does cause harmful interference to radio or television reception, which can be determined by turning the equipment off and on the user is encouraged to try to correct the interference by one or more of the following measures:

- Reorient or relocate the receiving antenna.
- Increase the separation between the equipment and receiver.
- Connect the equipment into an outlet on a circuit different from that to which the receiver is connected.
- Consult the dealer or an experienced radio/TV technician for help.

PATENT PENDING Printed in China



Press the POWER Button on the remote and slide the tail switch ON. When the blue light on your Robotosaur's belly is on and his eyes are green, the remote is connected and he is ready to play.

MAKING YOUR ROBOTOSAUR GO

- Hold the POWER button for 3s to turn off remote.
- When red LED flashes, batteries are low. Please replace the remote batteries for optimal performance.
- If remote is not used for 15 minutes, it will auto shut-off. Press the POWER button again to switch back on.
- When blue LED ring on belly is flashing, Robotosaur's rechargeable battery is low. Please plug in using the included USB charging cable to recharge the battery.
- If Robotosaur is awoken from SLEEP and the remote is still on, the remote will pair automatically with Robotosaur. However, in other disconnection situations, please turn off and on both Robotosaur and the remote to ensure the 2 are paired.
- Robotosaur is shipped in Try-Me mode. To activate full play mode, turn Robotosaur off and back on again.

PLAY FEATURES/TROUBLESHOOTING

1. Unscrew and remove the battery compartment cover.
2. Install 3 "AA" 1.5V batteries (not included) as shown in the diagram to the right.
3. Replace the cover and close battery compartment.

REMOTE BATTERY INSTALLATION

Your Robotosaur has a 3.7v 500 mAh rechargeable internal lithium battery. Although it comes with some charge, you need to charge it 60 minutes before use.

1. Plug the included custom USB cable into the tail port and then to a device (laptop) or adapter for a wall outlet.
2. When the red light on the USB turns off, it is fully charged. Store the USB cord.

CHARGING YOUR ROBOTOSAUR



- Read all safety warnings before use.
- Use this product only for its intended purpose.
- This product has no user serviceable components. Do not disassemble.
- Inspect the product before every use. If the product appears damaged in any manner, discontinue use and discard.
- For indoor use only.

SAFETY WARNINGS

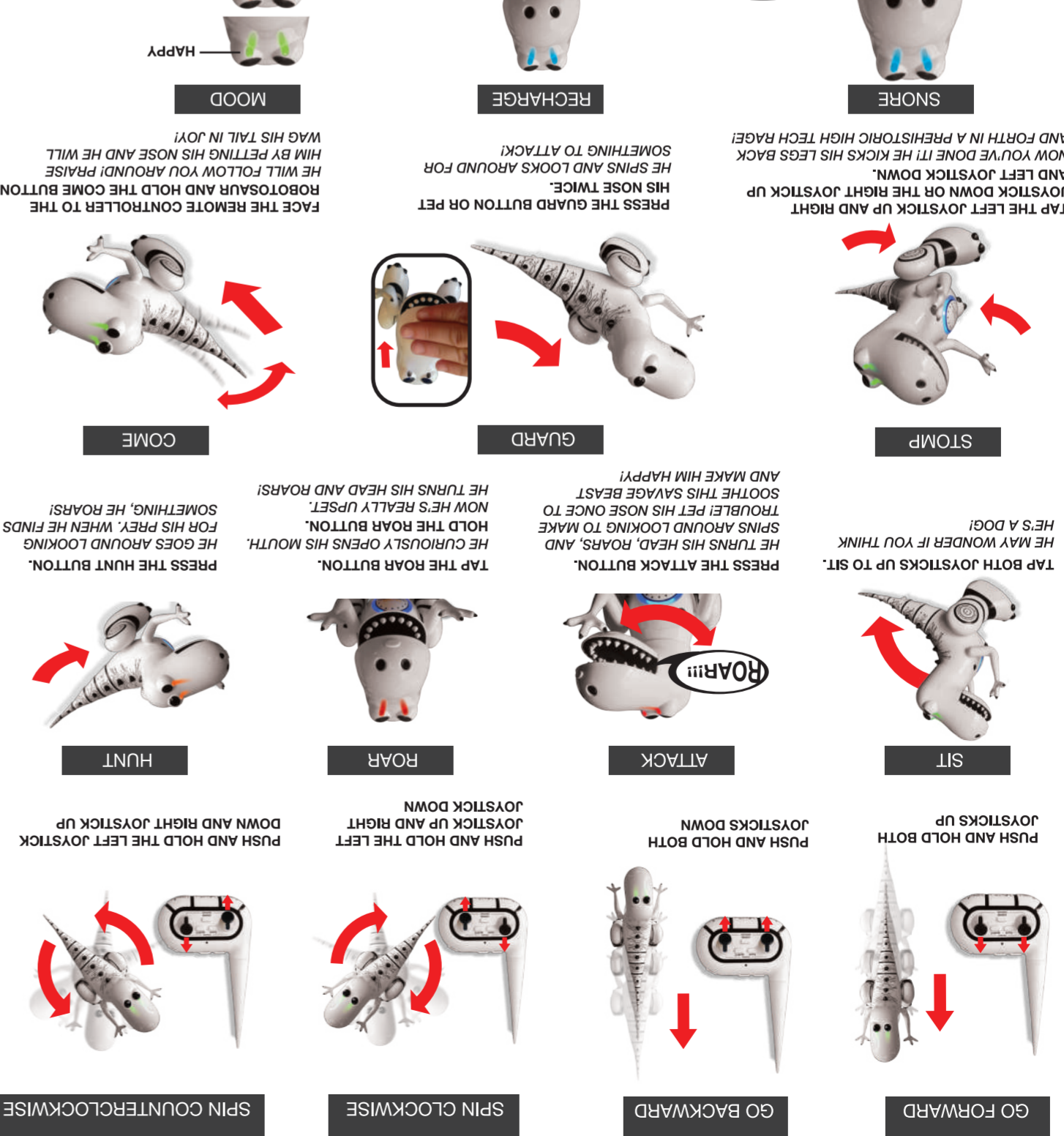
Congratulations on your purchase of the RC Robotosaur. Your new friend will take you on adventures doing all kinds of amazing things. He will protect your room too! But beware, he can get a bit cranky and tends to roar when he doesn't get his way! Keep this instruction manual, as it contains important information for future reference.

RC ROBOTOSAUR

Consult the dealer or an experienced radio/TV technician for help. - Increase the separation between the equipment and receiver. - Reorient or relocate the receiving antenna. - Connect the equipment into an outlet on a circuit different from that to which the receiver is connected. - Consult the dealer or an experienced radio/TV technician for help.

NOTE: This equipment has been tested and found to comply with the limits for a Class B digital device, pursuant to Part 15 of the FCC Rules. These limits are designed to provide reasonable protection against harmful interference in a residential installation. This equipment generates, uses and can radiate radio frequency energy and, if not installed and used in accordance with the instructions, may cause harmful interference to radio communications. However there is no guarantee that interference will not occur in a particular installation. If this equipment does cause harmful interference to radio or television reception, which can be determined by turning the equipment off and on the user is encouraged to try to correct the interference by one or more of the following measures:

- Reorient or relocate the receiving antenna.
- Increase the separation between the equipment and receiver.
- Connect the equipment into an outlet on a circuit different from that to which the receiver is connected.
- Consult the dealer or an experienced radio/TV technician for help.



GO FORWARD GO BACKWARD SPIN CLOCKWISE SPIN COUNTERCLOCKWISE