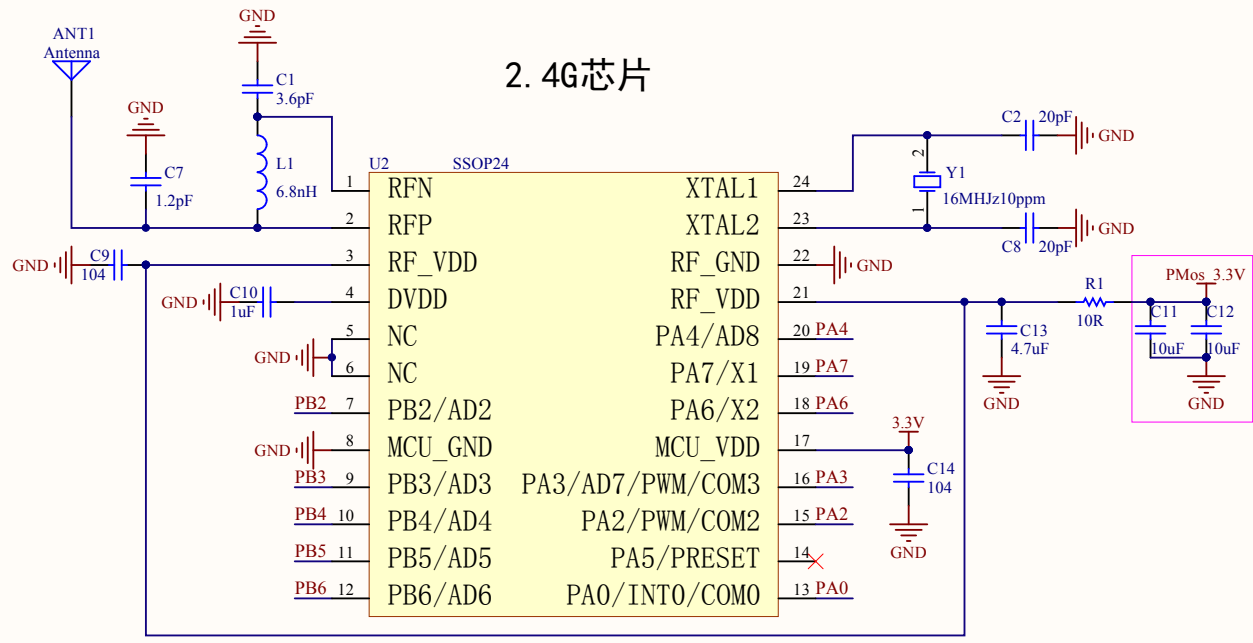
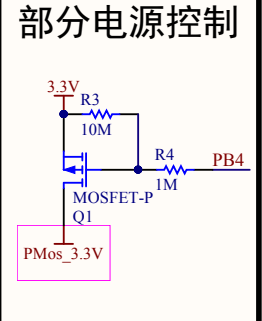
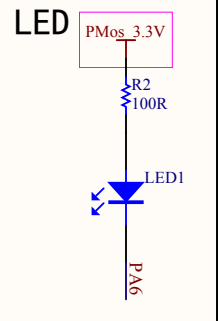
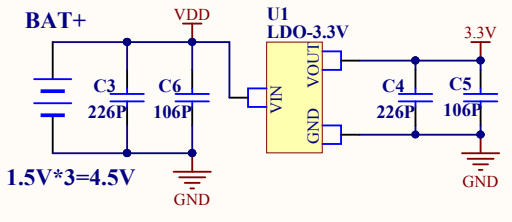


2. 4G芯片

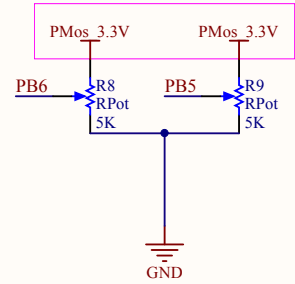


电源

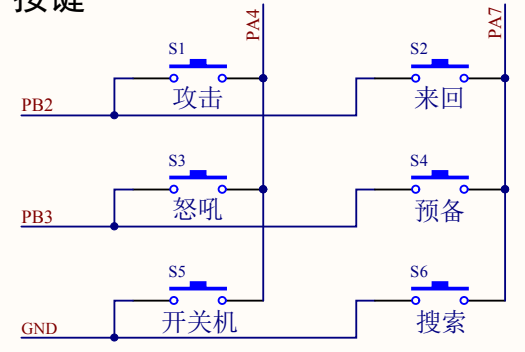


摇杆

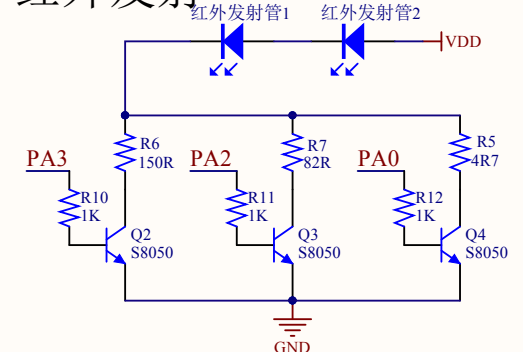
PB6对应左摇杆 向3.3V方向为左前 向GND方向为左后
 PB5对应右摇杆 向3.3V方向为右前 向GND方向为右后



按键



红外发射



R5/R6/R7为精密电阻

功能说明:

- 上电为睡眠状态。
- LED:工作状态显示
- 睡眠状态关闭
- 开机/关机键:
 开机状态下,长按3s关机
 关机状态下,触发后直接开机

Title			
JF160830智能恐龙_TX			
Size	Number	Revision	
A4	晶丰科技 BO	V7.0	
Date:	2017/9/26	Sheet of	
File:	C:\Users\...\JF160830智能恐龙_TX - 原理图.SchDoc		