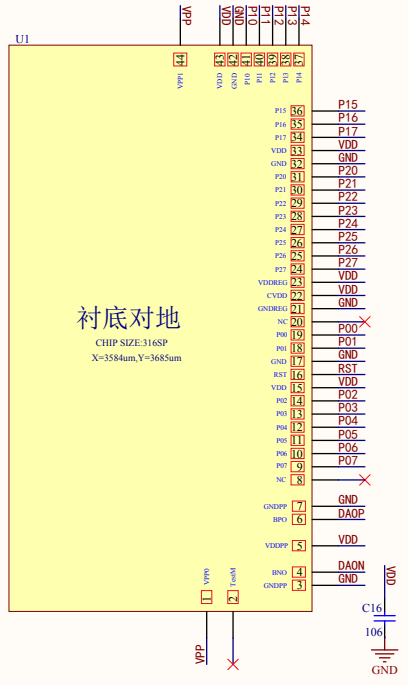
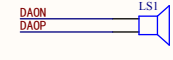


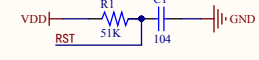
CHIP



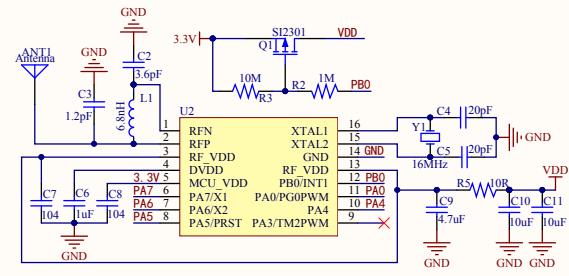
SPEAK



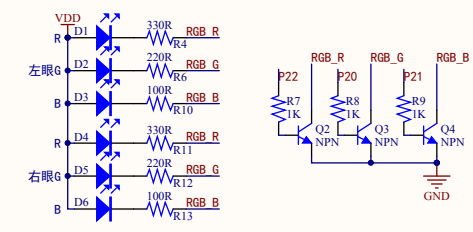
复位



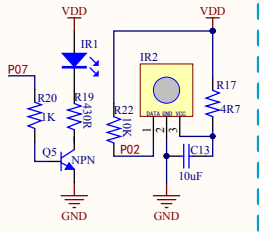
2.4G



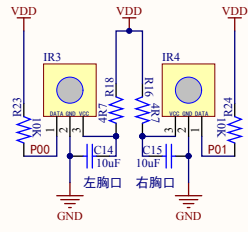
眼睛RGB



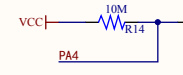
鼻孔IR



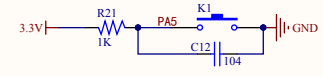
胸口IR



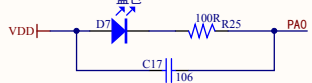
低电检测



鼻子键



胸口LED



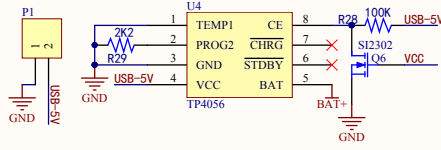
IIC_通讯



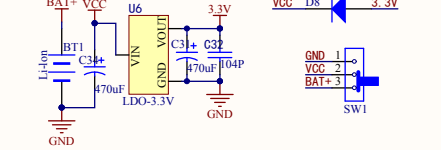
测试绑定线



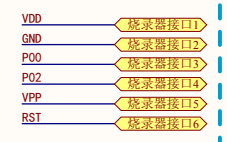
充电电路



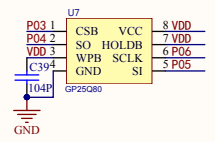
POWER



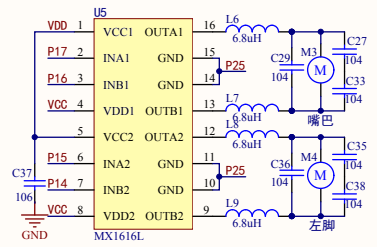
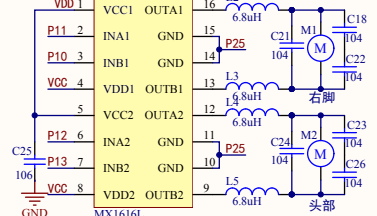
OTP烧录口



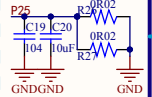
SPI_FLASH



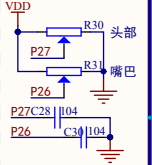
MOTOR



卡死检测



位置检测



IIC_通讯



V1.0:
 V2.0: 10口变动, 功能优化
 V2.1: 10口配合PCB修改, 硬件参数修改
 V3.0: 增加充电及充电控制

Title			JF160830智能恐龙(SNC82B9JF543W)		
Size	Number	Revision			
A3	晶丰科技	LP	V3.0		
Date:	2017/9/26	Sheet of			
File:	D:\方案\JF160830智能恐龙V3.0.Sch	Drawn By:			