



Formosa Teletek Corporation

BTW User's Guide **Version: 1.2**

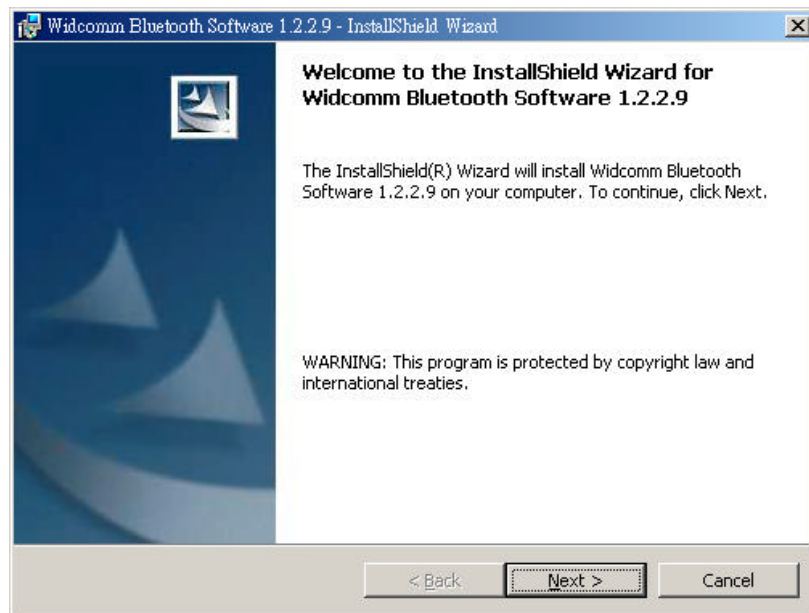


Formosa Teletek Corporation

358, Huaya 2nd Rd., Gueishan
Shiang, Taoyuan, Taiwan
Tel: 886-3-3280800
Fax: 886-3-3281231

Software & Driver Installation(98/ME/2000/XP)

1. Close any open programs and insert the utility CD into your CD-ROM Driver.
2. Click on the My Computer icon on your desktop.
 - (a) Click on the icon representing your CD-ROM to open it.
 - (b) Double click on the **"SETUP"** icon.
3. The Welcome screen informs you that the WIDCOMM Bluetooth Software Setup program is ready to begin. Click on the **"Next"** button.

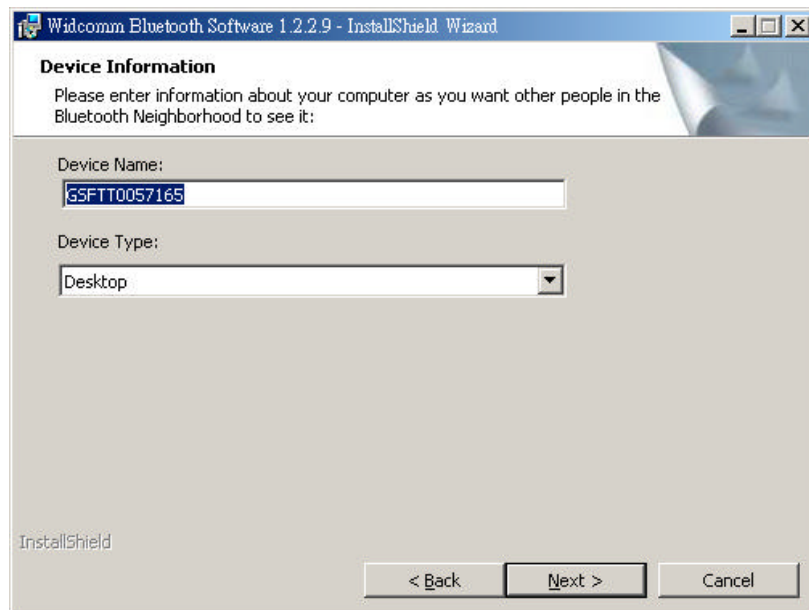


4. In the License Agreement screen, click on the radio button to the left of **"I accept the terms in the license agreement"**. Click on the **"Next"** button.

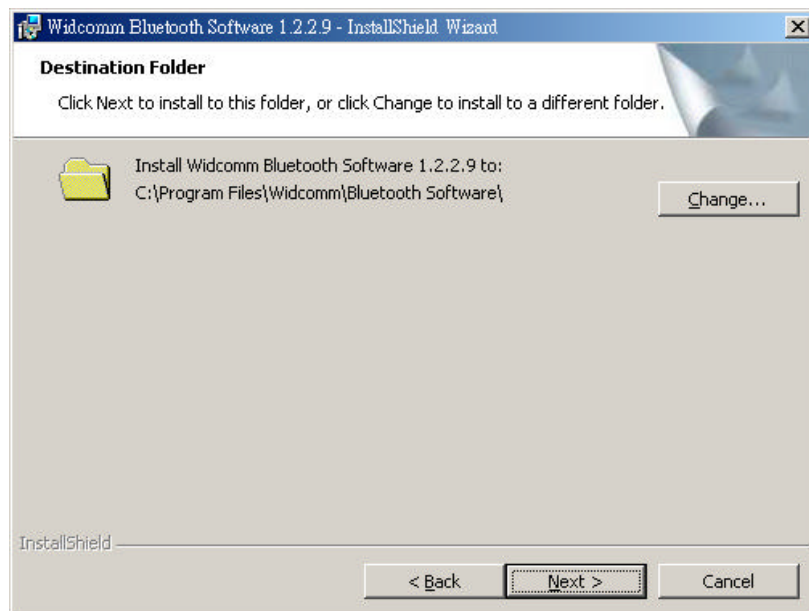


5. In the Device information screen:

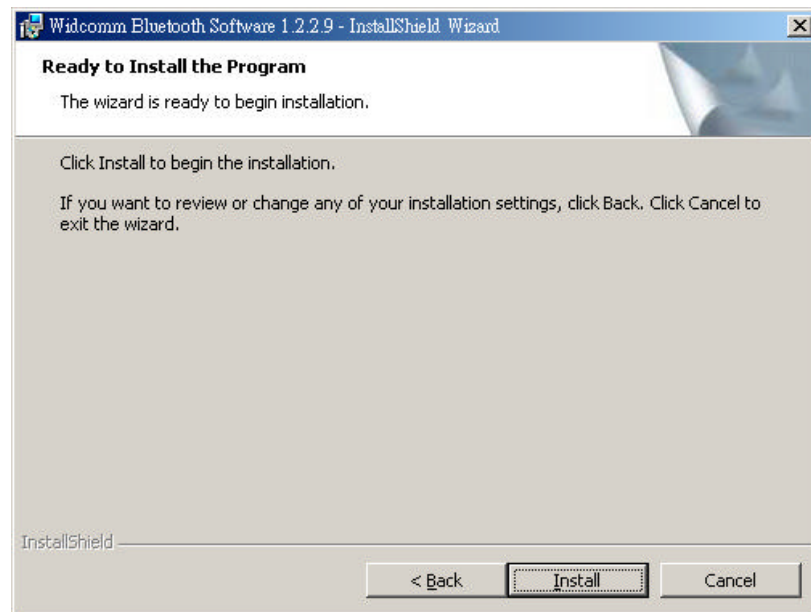
- Enter a device name.
- Select a device type.
- Click on the “**Next**” button.



6. In the Destination Folder screen you are asked to confirm the application software. If you would like, you may change the destination folder to another location as the directory.

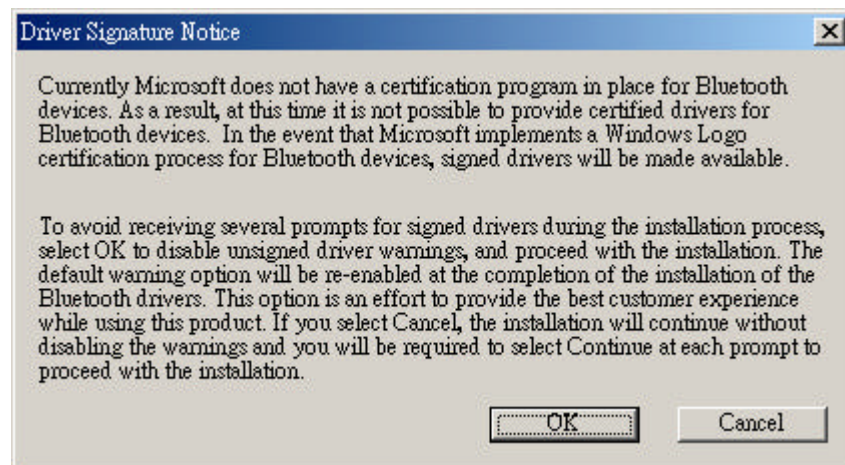


7. The Ready to install the Program screen informs you that the driver is ready for installation. Click on the “**Install**” button to continue.

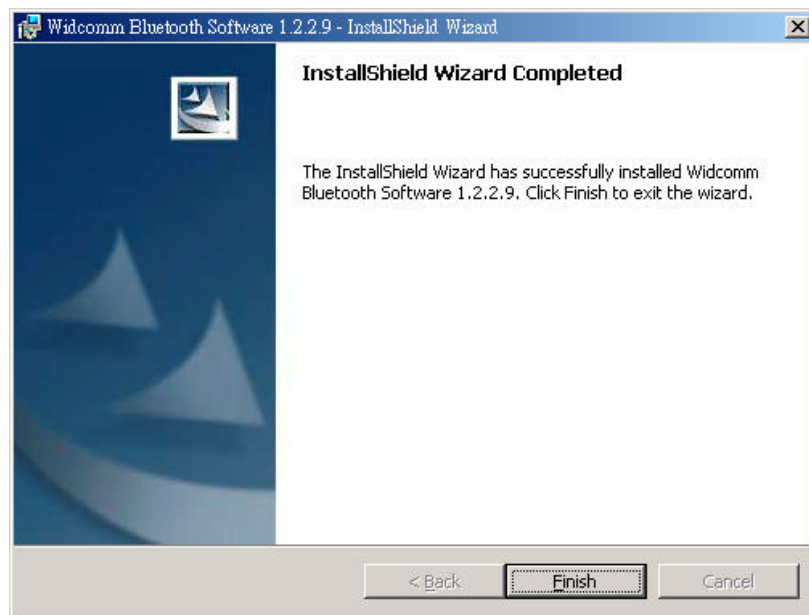


Note:

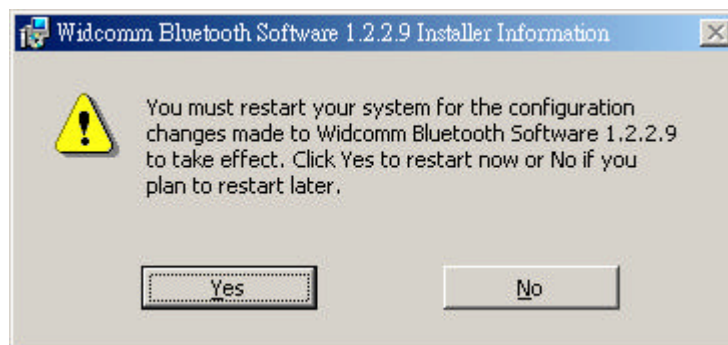
Please click on “**OK**” button from the Driver Signature Notice dialog box to proceed with driver installation in Win2000 and WinXP operating system.




8. When the files have been copied, you will be presented with a screen informing of its completion.
(a) Click on the **"Finish"** button, a pop-up dialog box will on the screen.



- (b) Click the **"Yes"** button to reboot your PC.



9. After you reboot your PC, the FORMOSA TELETEK USB DONGLE Driver

will install Finish and the **"Bluetooth Icon"**  resides in the Windows system tray.



Notice: The changes or modifications not expressly approved by the party responsible for compliance could void the user's authority to operate the equipment.

User Information

This device complies with part 15 of FCC Rules. Operation is subject to the following two conditions:

- (1) This device may not cause harmful interference, and
- (2) This device must accept any interference received, including interference that may cause undesired operation.

The FCC require the user to be notified that any changes or modification made to this device that are not expressly approved by **FORMOSA TELETEK CORPORATION** may void the user's authority to operate the equipment.

To comply with FCC RF exposure requirement, this device and its antenna must no be co-located or operating in conjunction with any other antenna or transmitter.