

Specific Absorption Rate (SAR) Test Report

for

Microlink Communications Inc.

on the

Wireless Lan 802.11b adaptor

Model Number: MWL-34B1

Test Report: EME-030697

Date of Report: June 16, 2003

Date of test: June 6, 2003

Total No of Pages Contained in this Report: 61



0597

ILAC MRA

Accredited for testing to FCC Part 15

Tested by: Kevin Chen	
Reviewed by: Elton Chen	

Review Date: June 23, 2003

All services undertaken are subject to the following general policy: Reports are submitted for exclusive use of the client to whom they are addressed. Their significance is subject to the adequacy and representative character of the samples and to the comprehensiveness of the tests, examinations or surveys made. This report shall not be reproduced except in full, without written consent of Intertek Testing Services, Taiwan Ltd.



STATEMENT OF COMPLIANCE

The Microlink sample device, model # MWL-34B1 was evaluated in accordance with the requirements for compliance testing defined in FCC OET Bulletin 65, Supplement C (Edition 01-01). Testing was performed at the Intertek Testing Services facility in Hsinchu, Taiwan.

For the evaluation, the dosimetric assessment system INDEXSAR SARA2 was used. The phantom employed was the box phantom of 2mm thick in one wall. The total uncertainty for the evaluation of the spatial peak SAR values averaged over a cube of 1g tissue mass had been assessed for this system to be $\pm 27.5\%$.

The device was tested at their maximum output power declared by the Microlink

In summary, the maximum spatial peak SAR value for the sample device averaged over 1g was found to be:

Phantom	Position	SAR_{1g}, mW/g
2mm thick box phantom wall	The EUT inserted into the left side of notebook PC, with EUT bottom touching the phantom	0.228 mW/g.

In conclusion, the tested Sample device was found to be in compliance with the requirements defined in OET Bulletin 65, Supplement C (Edition 01-01) for body configurations.



FCC ID. : QVZ20020000

Report No.: EME-030697
Page 3 of 61

1.0 JOB DESCRIPTION

1.1 Client Information

The MWL-34B1 has been tested at the request of:

Company: **Microlink Communications Inc.**
6F, No. 30, Raykuang Rd., Neihu, Taipei,
Taiwan

1.2 Equipment under test (EUT)

Product Descriptions:

Equipment	Wireless Lan 802.11b adaptor		
Trade Name	Microlink	Model No:	MWL-34B1
FCC ID	QVZ20020000	S/N No.	Not Labeled
Category	Portable	RF Exposure	Uncontrolled Environment
Frequency Band	2412 – 2462 MHz	System	DSSS

EUT Antenna Description			
Type	PCB Printed	Configuration	Fixed
Dimensions	55 x 120mm	Gain	1 dBi
Location	Embedded		

Note: The serial models, AWC-351M, 11WP-612RL, PWC-351R and IWE100-X are identical to the basic model, MWL-34B1, for marketing purpose only.

Use of Product : **Wireless Data Communication**

Manufacturer: Microlink

Production is planned: Yes, No

EUT receive date: June 6, 2003

EUT received condition: Good operating condition prototype.

Test start date: June 6, 2003

Test end date: June 6, 2003



FCC ID. : QVZ20020000

Report No.: EME-030697

Page 4 of 61

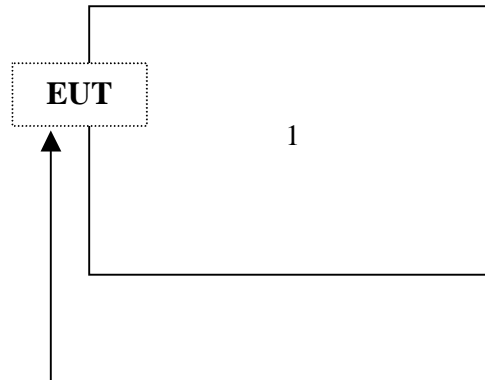
1.3 Test plan reference

FCC Rule: Part 2.1093, FCC's OET Bulletin 65, Supplement C (Edition 01-01)

1.4 System test configuration

1.4.1 System block diagram & Support equipment

Support Equipment			
Item #	Equipment	Model No.	S/N
1	IBM Laptop Computer	2658-B7T	AA-GGRFZ



Installed inside laptop with a PCMCIA Slot (lower)



1.4.3 Test Condition

During tests the worst-case data (max RF coupling) was determined with following conditions:

Usage	Operates with a portable computer	Distance between antenna axis at the joint and the liquid surface:	Laptop is touching the Phantom in bottom position	
Simulating human Head/ Body/Hand	Body	EUT Battery	Device is powered from host computer through battery.	
Conducted output Power	Channel	Frequency MHz	Before SAR Test (dBm)	After SAR Test (dBm)
	Low Channel - 1	2412	19.33	19.35
	Mid Channel - 6	2437	19.11	19.06
	High Channel- 11	2462	18.88	18.90

The spatial peak SAR values were assessed for lowest, middle and highest operating channels, defined by the manufacturer.

The conducted output power was measured before and after the test using an average power meter.

Settle the EUT into notebook, run the test program “mp8180.exe” under Windows OS, provided by manufacturer.

The EUT was transmitted continuously during the test.

1.5 Modifications required for compliance

Intertek Testing Services implemented no modifications.

1.6 Additions, deviations and exclusions from standards

The phantom employed was the box phantom of 2mm thick in vertical wall.



2.0 SAR EVALUATION

2.1 SAR Limits

The following FCC limits for SAR apply to devices operate in General Population/Uncontrolled Exposure environment:

EXPOSURE (General Population/Uncontrolled Exposure environment)	SAR (W/kg)
Average over the whole body	0.08
Spatial Peak (1g)	1.60
Spatial Peak for hands, wrists, feet and ankles (10g)	4.00



2.2 Configuration Photographs

SAR Measurement Test Setup

Test System





SAR Measurement Test Setup

Bottom side of Laptop facing phantom touching



Bottom side of Laptop facing phantom touching – Zoom In





SAR Measurement Test Setup
EUT perpendicular to phantom, 15 mm separation



EUT perpendicular to phantom, 15 mm separation – Zoom In



2.3 SAR measurement system

Robot system specification

The SAR measurement system being used is the IndexSAR SARA2 system, which consists of a Mitsubishi RV-E2 6-axis robot arm and controller, IndexSAR probe and amplifier and SAM phantom Head Shape. The robot is used to articulate the probe to programmed positions inside the phantom head to obtain the SAR readings from the DUT.

The system is controlled remotely from a PC, which contains the software to control the robot and data acquisition equipment. The software also displays the data obtained from test scans.

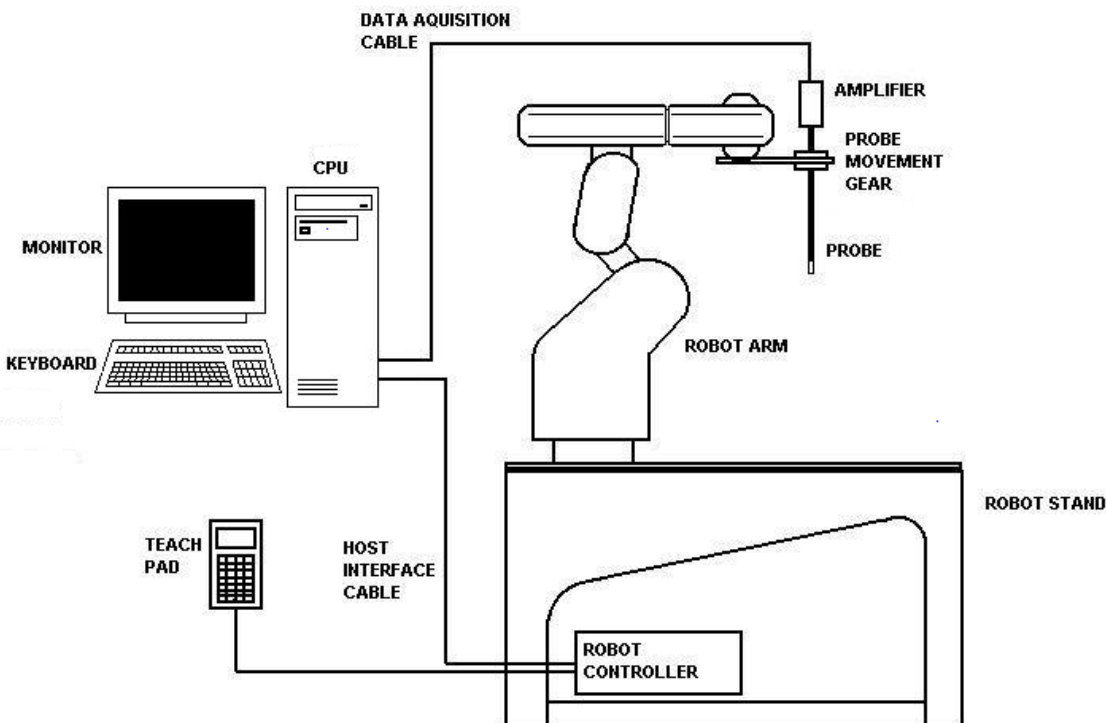


Figure 1: Schematic diagram of the SAR measurement system

The position and digitised shape of the phantom heads are made available to the software for accurate positioning of the probe and reduction of set-up time.

The SAM phantom heads are individually digitised using a Mitutoyo CMM machine to a precision of 0.02mm. The data is then converted into a shape format for the software, providing an accurate description of the phantom shell.

In operation, the system first does an area (2D) scan at a fixed depth within the liquid from the inside wall of the phantom. When the maximum SAR point has been found, the system will then carry out a 3D scan centred at that point to determine volume averaged SAR level.



2.4 SAR measurement system validation

Prior to the assessment, the system was verified to the $\pm 10\%$ of the specifications by using the system validation equipments. The validation was performed at 2450 MHz on the bottom side of box phantom.

Procedures

The SAR evaluation was performed with the following procedures:

- a. The SAR distribution was measured at the exposed side of the bottom of the box phantom and was measured at a distance of 8 mm from the inner surface of the shell. The feed power was 1/4W.
- b. The dimension for this cube is 32 mm x 32 mm x 34 mm was assessed by measuring 5 x 5 x 7 points. On the basis of this data set, the spatial peak SAR value was evaluated with the following procedure:
 - i) The data at the surface were extrapolated, since the center of the dipoles is 3 mm away from the tip of the probe and the distance between the surface and the lowest measurement point is 5 mm. The extrapolation was based on a least square algorithm. A polynomial of the fourth order was calculated through the points in Z-axes. This polynomial was then used to evaluate the points between the surface and the probe tip.
 - ii) The maximum interpolated value was searched with a straightforward algorithm. Around this maximum, the SAR values averaged over the spatial volumes (1g or 10g) were computed using the 3-D spline interpolation algorithm. The 3-D spline is composed of three one-dimensional splines with the “Not a knot” condition (in x, y and z directions). The volume was integrated with the trapezoidal algorithm. 1000 points (10 x 10 x 10) were interpolated to calculate the average.
 - iii) All neighboring volumes were evaluated until no neighboring volume with a higher average value was found.

System Validation (2450 MHz Head)					
Frequency MHz	Operating Mode	Target SAR_{1g} (mW/g)	Measured SAR_{1g} (mW/g)	Deviation ($\pm 10\%$)	Plot Number
2450	CW	52.4	50.16	-5.92%	7



Test Results

The results on the following page(s) were obtained when the device was tested in the condition described in this report. Detailed measurement data and plots, which reveal information about the location of the maximum SAR with respect to the device, are reported in Appendix A.



System performance check (2450 MHz Head)					
Frequency MHz	Operating Mode	Target SAR _{1g} (mW/g)	Measured SAR _{1g} (mW/g)	Deviation (±10%)	Plot Number
2450	CW	52.4	53.28	1.68%	8

Note: a) Worst case data were reported
b) Uncertainty of the system is not included

Measurement Results

Trade Name:	Microlink	Model No.:	MWL-34B1
Serial No.:	Not Labeled	Test Engineer:	Kevin Chen
TEST CONDITIONS			
Ambient Temperature	24 °C	Relative Humidity	65 %
Test Signal Source	Test Mode	Signal Modulation	DSSS
Output Power Before SAR Test	See page 7	Output Power After SAR Test	See page 7
Test Duration	22 min. each scan	Number of Battery Change	1

EUT Position						
Channel (MHz)	Operating Mode	Crest Factor	Description	Distance (mm)	Measured SAR _{1g} (mW/g)	Plot Number
2437	DSSS	1	Bottom of NoteBook PC	0	0.228	1
2412	DSSS	1	Bottom of NoteBook PC	0	0.206	2
2462	DSSS	1	Bottom of Note Book PC	0	0.227	3
2437	DSSS	1	Perpendicular to phantom	15	0.083	4
2412	DSSS	1	Perpendicular to phantom	15	0.072	5
2462	DSSS	1	Perpendicular to phantom	15	0.083	6



3.0 TEST EQUIPMENT

3.1 Equipment List

The Specific Absorption Rate (SAR) tests were performed with the INDEXSAR SARA2 SYSTEM. The following major equipment/components were used for the SAR evaluations:

SAR Measurement System			
EQUIPMENT	SPECIFICATIONS	S/N #	LAST CAL. DATE
Balanced Validation dipole	2450MHz	0048	Mar. 26, 2003
Robot	Mitsubishi RV-E2	EA009002	N/A
	Repeatability: ± 0.04mm; Number of Axes: 6		
E-Field Probe	IXP-050	0114	09/06/2002
	Frequency Range: Probe outer diameter: 5 mm; Length: 350 mm; Distance between the probe tip and the dipole center: 3 mm		
Data Acquisition	SARA2	N/A	N/A
	Processor: Pentium 4; Clock speed: 1.5GHz; OS: Windows XP; I/O: two RS232; Software: SARA2 ver. 0.401N;		
Phantom	2mm wall thickness box phantom	N/A	N/A
	Shell Material: clear Perspex; Thickness: 2 ± 0.1 mm; Capacity: 154 x 200 x 200 (W x L x D) mm ³ ; Dielectric constant: less than 2.85 above 500MHz;		
Device holder	Material: clear Perspex; Dielectric constant: less than 2.85 above 500MHz	N/A	N/A
Simulated Tissue	Mixture	N/A	N/A
	Please see section 3.2 for details		
RF	Boonton 4231A with 51011-EMC power sensor	79401-32482	03/21/2003
Power Meter	Frequency Range: 0.03 to 8 GHz, <24dBm		
RF	INDEXSAR VTL5400	0302	01/23/2003
Power Amplifier	10MHz to 2.5GHz, Gain >30dB		
Directional Coupler	INDEXSAR VDC0830-20	0302	05/19/2003
	0.8 to 3 GHz, Max. Power<500W		
Vector Network Analyzer	HP 8753B HP 85046A	2807J04037 2729A01958	12/13/2002
	300k to 3GHz		
Signal Generator	Rohde & Schwarz SMR27	100036	08/16/2002
	10M to 27GHz, <120dBuV		



3.2 Body Tissue Simulating Liquid for evaluation test

Body Ingredients Frequency (2.45 GHz)	
DGBE Dilethylene Glycol Butyl Ether	26.7%
Salt	0.04%
Water	73.2%

The dielectric parameters were verified prior to assessment using the HP 85070A dielectric probe kit and the HP 8753C network Analyzer. The dielectric parameters were:

Frequency (MHz)	Temp. (°C)	e _r / Relative Permittivity			s / Conductivity (mho/m)			r *(kg/m ³)
		measured	target	Δ(±5%)	measured	target	Δ(±5%)	
2450	23.6	50.58362	52.7	-4.02%	1.86865	1.95	-4.17%	1000

* Worst-case assumption

Test data is included in Appendix B.

Head Tissue Simulating Liquid for System performance Check test

Head Ingredients Frequency (2.45 GHz)	
DGBE Dilethylene Glycol	53.3%
Water	46.7%

The dielectric parameters were verified prior to assessment using the HP 85070A dielectric probe kit and the HP 8753C network Analyzer. The dielectric parameters were:

Frequency (MHz)	Temp. (°C)	e _r / Relative Permittivity			s / Conductivity (mho/m)			r *(kg/m ³)
		measured	target	Δ(±5%)	measured	target	Δ(±5%)	
2450	22.5	38.819	39.2	-0.97%	1.854	1.80	3%	1000

* Worst-case assumption



3.3 E-Field Probe Calibration

Probe calibration factors are included in Appendix C.



3.4 Measurement Uncertainty

The uncertainty budget has been determined for the INDEXSAR SARA2 measurement system according to IEEE P1528 documents [3] and is given in the following table. The extended uncertainty (95% confidence level) was assessed to be 27.5 %

Uncertainty Component	Sec.	(dB)	Tol.(+/-)	(%)	Prob. Dist.	Divisor (descript)	Divisor (value)	c1	Standard Uncertainty (%)	
Measurement System										
Probe Calibration	E 1.1			10	N	1 or k	2	1	5.00	25.00
Axial Isotropy	E 1.2	0.25	5.93	5.93	R	$\sqrt{3}$	1.73	0	0.00	0.00
Hemispherical Isotropy	E 1.2	0.45	10.92	10.92	R	$\sqrt{3}$	1.73	1	6.30	39.73
Boundary effects	E 1.3		4	4.00	R	$\sqrt{3}$	1.73	1	2.31	5.33
Linearity	E 1.4	0.04	0.93	0.93	R	$\sqrt{3}$	1.73	1	0.53	0.29
System Detection Limits	E 1.5		1	1.00	R	$\sqrt{3}$	1.73	1	0.58	0.33
Readout Electronics	E 1.6		1	1.00	N	1 or k	1.73	1	1.00	1.00
Response time	E 1.7		0	0.00	R	$\sqrt{3}$	1.73	1	0.00	0.00
Integration time	E 1.8		1.8	1.80	R	$\sqrt{3}$	1.73	1	1.04	1.08
RF Ambient Conditions	E 5.1		3	3.00	R	$\sqrt{3}$	1.73	1	1.73	3.00
Probe Positioner Mechanical Tolerance	E 5.2		0.6	0.60	R	$\sqrt{3}$	1.73	1	0.35	0.12
Probe Position wrt. Phantom Shell	E 5.3		5	5.00	R	$\sqrt{3}$	1.73	1	2.89	8.33
SAR Evaluation Algorithms	E 4.2		8	8.00	R	$\sqrt{3}$	1.73	1	4.62	21.33
Test Sample Related										
Test Sample Positioning	E 3.2.1		10	10.00	R	$\sqrt{3}$	1.73	1	5.77	33.33
Device Holder Uncertainty	E 3.1.1		10	10.00	R	$\sqrt{3}$	1.73	1	5.77	33.33
Output Power Variation	E 5.6.2		5	4.00	R	$\sqrt{3}$	1.73	0.5	2.89	8.33
Phantom and tissue Parameters										
Phantom Uncertainty (shape and thickness)	E 2.1		4	4.00	R	$\sqrt{3}$	1.73	0.5	1.15	1.33
Liquid conductivity (Deviation from target)	E 2.2		5	5.00	R	$\sqrt{3}$	1.73	0.5	1.44	2.08
Liquid conductivity (Meas. Uncertainty)	E 2.2		10	10.00	R	$\sqrt{3}$	1.73	0.5	2.89	8.33

Combined standard uncertainty

RSS

14.0



3.5 Measurement Traceability

All measurements described in this report are traceable to Chinese National Laboratory Accreditation (CNLA) standards or appropriate national standards.



4.0 WARNING LABEL INFORMATION - USA

See user manual.



5.0 REFERENCES

- [1] ANSI, *ANSI/IEEE C95.1-1991: IEEE Standard for Safety Levels with Respect to Human Exposure to Radio Frequency Electromagnetic Fields, 3kHz to 300 GHz*, The Institute of electrical and Electronics Engineers, Inc., New York, NY 10017, 1992

- [2] Federal Communications Commission, “Evaluating Compliance with FCC Guidelines for Human Exposure to Radiofrequency Electromagnetic Fields”, OET Bulletin 65, FCC, Washington, D.C. 20554, 1997

- [3] IEEE Standards Coordinating Committee 34, ”*DRAFT Recommended Practice for Determining the Peak Spatial-Average Specific Absorption Rate (SAR) in the Human Body Due to Wireless Communications Devices: Experimental Techniques*”, IEEE Std 1528-200X, Draft CD 1.0 – September 15, 2002



6.0 DOCUMENT HISTORY

Revision/ Job Number	Writer Initials	Date	Change
TC0300620	J.C.	June 10, 2003	Original document



APPENDIX A - SAR Evaluation Data

Power drift is the measurement of power drift of the device over one complete SAR scan.

To assess the drift of the power of the device under test, a SAR measurement was made in the middle of the zoom scan volume at the start of the scan and a measurement at this point was then also made after the measurement scan. The difference between the two measurements should be less than 5%.



Plot #1 (1/2)

Date / Time:	2003/6/6	Position:	bottom
Filename:	MWL-34B1_2437bot	Phantom:	HeadBox1.csv
Device Tested:	MWL-34B1	Head Rotation:	0
Antenna:	PCB printed	Test Frequency:	2437MHz
Shape File:	MWL-34B1bot.csv	Power Level:	19.11dBm

Probe:	0114																
Cal File:	SN0114_2450_CW_BODY																
Cal Factors:	<table border="1"> <thead> <tr> <th></th> <th>X</th> <th>Y</th> <th>Z</th> </tr> </thead> <tbody> <tr> <td>Air</td> <td>532</td> <td>494</td> <td>450</td> </tr> <tr> <td>DCP</td> <td>20</td> <td>20</td> <td>20</td> </tr> <tr> <td>Lin</td> <td>.528</td> <td>.528</td> <td>.528</td> </tr> </tbody> </table>		X	Y	Z	Air	532	494	450	DCP	20	20	20	Lin	.528	.528	.528
		X	Y	Z													
	Air	532	494	450													
	DCP	20	20	20													
Lin	.528	.528	.528														
Amp Gain:	2																
Averaging:	3																
Batteries Replaced:	June 6																

Liquid:	15.3cm
Type:	2450MHz body
Conductivity:	1.86865
Relative Permittivity:	50.58362
Liquid Temp (deg C):	23.6
Ambient Temp (deg C):	21
Ambient RH (%):	65
Density (kg/m3):	1000
Software Version:	0.421N
Crest Factor=	1

ZOOM SCAN RESULTS:

Spot SAR (W/kg):	Start Scan	End Scan	
	0.070	0.070	
Change during Scan (%)	0.00		
Max E-field (V/m):	12.12		
Max SAR (W/kg)	1g	10g	
	0.228	0.130	
Location of Max (mm):	X	Y	Z
	75.0	-13.0	-155.9



FCC ID. : QVZ20020000

Report No.: EME-030697

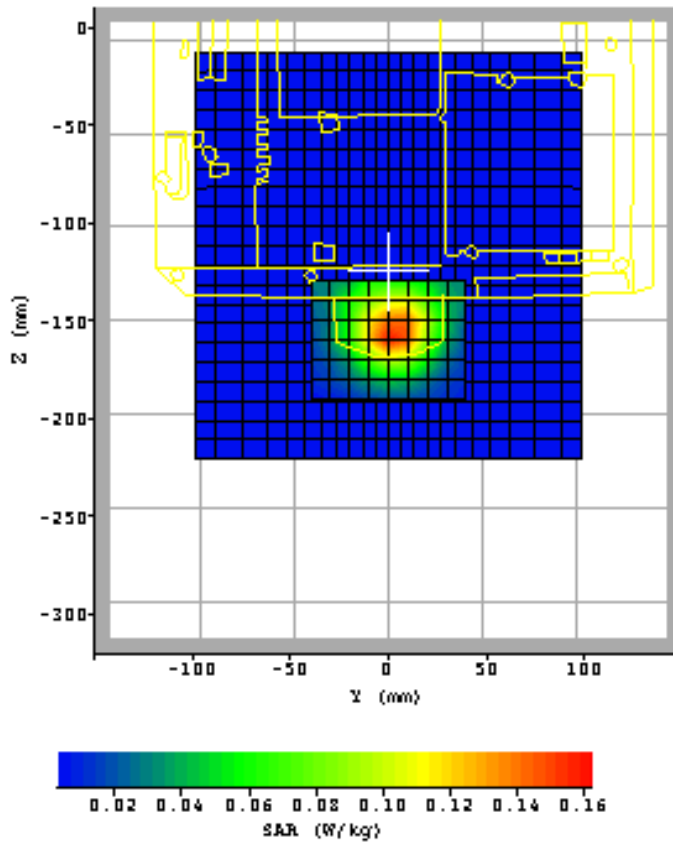
Page 24 of 61

Plot #1 (2/2)

Date / Time:	2003/6/6	Position:	bottom
Filename:	MWL-34B1_2437bot	Phantom:	HeadBox1.csv
Device Tested:	MWL-34B1	Head Rotation:	0
Antenna:	PCB printed	Test Frequency:	2437MHz
Shape File:	MWL-34B1bot.csv	Power Level:	19.11dBm

AREA SCAN:

	Min	Max	Steps
Scan Extent:			
Y	-40.0	40.0	8.0
Z	-190.0	-130.0	6.0





Plot #2 (1/2)

Date / Time:	2003/6/6	Position:	bottom
Filename:	MWL-34B1_2412bot	Phantom:	HeadBox1.csv
Device Tested:	MWL-34B1	Head Rotation:	0
Antenna:	PCB printed	Test Frequency:	2412MHz
Shape File:	MWL-34B1bot.csv	Power Level:	19.33dBm

Probe:	0114																
Cal File:	SN0114_2450_CW_BODY																
Cal Factors:	<table border="1"> <thead> <tr> <th></th> <th>X</th> <th>Y</th> <th>Z</th> </tr> </thead> <tbody> <tr> <td>Air</td> <td>532</td> <td>494</td> <td>450</td> </tr> <tr> <td>DCP</td> <td>20</td> <td>20</td> <td>20</td> </tr> <tr> <td>Lin</td> <td>.528</td> <td>.528</td> <td>.528</td> </tr> </tbody> </table>		X	Y	Z	Air	532	494	450	DCP	20	20	20	Lin	.528	.528	.528
		X	Y	Z													
	Air	532	494	450													
	DCP	20	20	20													
Lin	.528	.528	.528														
Amp Gain:	2																
Averaging:	3																
Batteries Replaced:	June 6																

Liquid:	15.3cm
Type:	2450MHz body
Conductivity:	1.86865
Relative Permittivity:	50.58362
Liquid Temp (deg C):	23.6
Ambient Temp (deg C):	21
Ambient RH (%):	65
Density (kg/m3):	1000
Software Version:	0.421N
Crest Factor=	1

ZOOM SCAN RESULTS:

Spot SAR (W/kg):	Start Scan	End Scan	
	0.068	0.068	
Change during Scan (%)	-1.34		
Max E-field (V/m):	11.55		
Max SAR (W/kg)	1g	10g	
	0.206	0.119	
Location of Max (mm):	X	Y	Z
	75.0	-14.0	-156.0



FCC ID. : QVZ20020000

Report No.: EME-030697

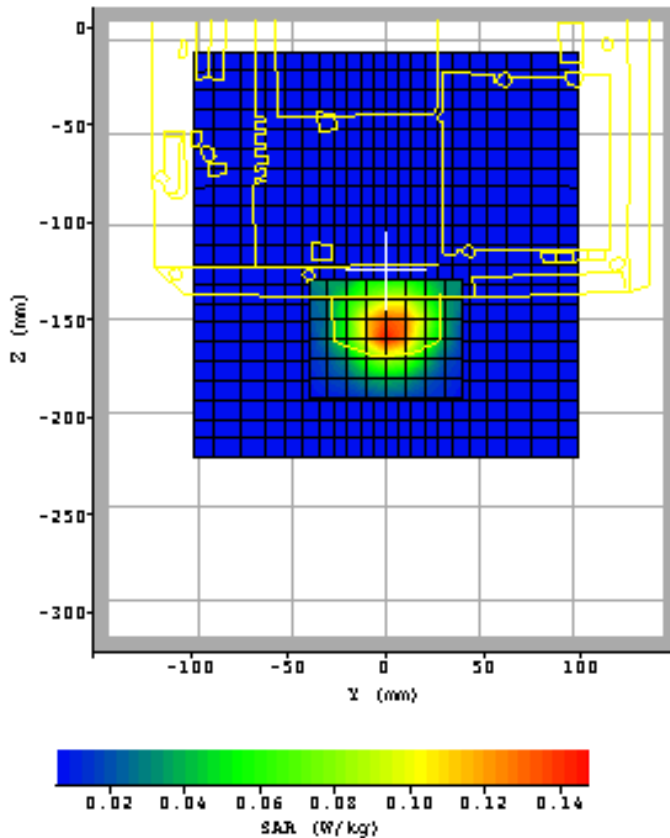
Page 26 of 61

plot #2 (2/2)

Date / Time:	2003/6/6	Position:	bottom
Filename:	MWL-34B1_2412bot	Phantom:	HeadBox1.csv
Device Tested:	MWL-34B1	Head Rotation:	0
Antenna:	PCB printed	Test Frequency:	2412MHz
Shape File:	MWL-34B1bot.csv	Power Level:	19.33dBm

AREA SCAN:

	Min	Max	Steps
Scan Extent:			
Y	-40.0	40.0	8.0
Z	-190.0	-130.0	6.0





plot #3 (1/2)

Date / Time:	2003/6/6	Position:	bottom
Filename:	MWL-34B1_2462bot	Phantom:	HeadBox1.csv
Device Tested:	MWL-34B1	Head Rotation:	0
Antenna:	PCB printed	Test Frequency:	2462MHz
Shape File:	MWL-34B1bot.csv	Power Level:	18.88dBm

Probe:	0114																
Cal File:	SN0114_2450_CW_BODY																
Cal Factors:	<table border="1"> <thead> <tr> <th></th> <th>X</th> <th>Y</th> <th>Z</th> </tr> </thead> <tbody> <tr> <td>Air</td> <td>532</td> <td>494</td> <td>450</td> </tr> <tr> <td>DCP</td> <td>20</td> <td>20</td> <td>20</td> </tr> <tr> <td>Lin</td> <td>.528</td> <td>.528</td> <td>.528</td> </tr> </tbody> </table>		X	Y	Z	Air	532	494	450	DCP	20	20	20	Lin	.528	.528	.528
		X	Y	Z													
	Air	532	494	450													
	DCP	20	20	20													
Lin	.528	.528	.528														
Amp Gain:	2																
Averaging:	3																
Batteries Replaced:	June 6																

Liquid:	15.3cm
Type:	2450MHz body
Conductivity:	1.86865
Relative Permittivity:	50.58362
Liquid Temp (deg C):	23.6
Ambient Temp (deg C):	21
Ambient RH (%):	65
Density (kg/m3):	1000
Software Version:	0.421N
Crest Factor:	=1

ZOOM SCAN RESULTS:

Spot SAR (W/kg):	Start Scan	End Scan
	0.067	0.068
Change during Scan (%)	2.60	
Max E-field (V/m):	12.11	
Max SAR (W/kg)	1g	10g
	0.227	0.129

Location of Max (mm):	X	Y	Z
	75.0	-13.0	-157.0

AREA SCAN:

Scan Extent:	Min	Max	Steps	
	Y	-40.0	40.0	8.0
	Z	-190.0	-130.0	6.0



FCC ID. : QVZ20020000

Report No.: EME-030697

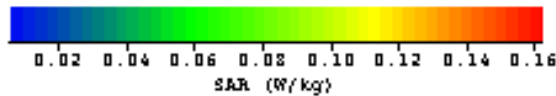
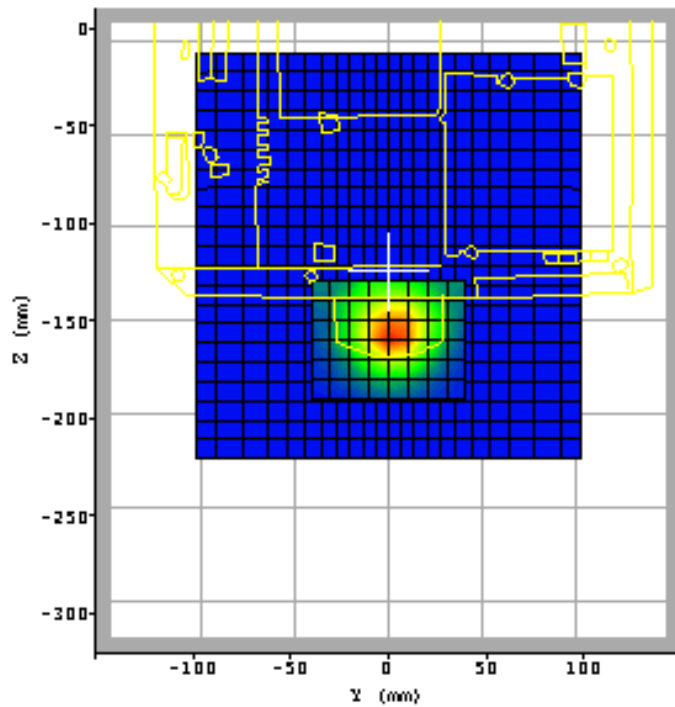
Page 28 of 61

plot #3 (2/2)

Date / Time:	2003/6/6	Position:	bottom
Filename:	MWL-34B1_2462bot	Phantom:	HeadBox1.csv
Device Tested:	MWL-34B1	Head Rotation:	0
Antenna:	PCB printed	Test Frequency:	2462MHz
Shape File:	MWL-34B1bot.csv	Power Level:	18.88dBm

AREA SCAN:

	Min	Max	Steps
Scan Extent:			
Y	-40.0	40.0	8.0
Z	-190.0	-130.0	6.0





plot #4 (1/2)

Date / Time:	2003/6/6	Position:	perpendicular 15mm
Filename:	MWL-34B1_2437per15	Phantom:	HeadBox1.csv
Device Tested:	MWL-34B1	Head Rotation:	0
Antenna:	PCB printed	Test Frequency:	2437MHz
Shape File:	MWL-34B1per.csv	Power Level:	19.11dBm

Probe:	0114																
Cal File:	SN0114_2450_CW_BODY																
Cal Factors:	<table border="1"> <thead> <tr> <th></th> <th>X</th> <th>Y</th> <th>Z</th> </tr> </thead> <tbody> <tr> <td>Air</td> <td>532</td> <td>494</td> <td>450</td> </tr> <tr> <td>DCP</td> <td>20</td> <td>20</td> <td>20</td> </tr> <tr> <td>Lin</td> <td>.528</td> <td>.528</td> <td>.528</td> </tr> </tbody> </table>		X	Y	Z	Air	532	494	450	DCP	20	20	20	Lin	.528	.528	.528
		X	Y	Z													
	Air	532	494	450													
	DCP	20	20	20													
Lin	.528	.528	.528														
Amp Gain:	2																
Averaging:	3																
Batteries Replaced:	June 6																

Liquid:	15.3cm
Type:	2450MHz body
Conductivity:	1.86865
Relative Permittivity:	50.58362
Liquid Temp (deg C):	23.8
Ambient Temp (deg C):	21
Ambient RH (%):	65
Density (kg/m3):	1000
Software Version:	0.421N
Crest Factor:	=1

ZOOM SCAN RESULTS:

Spot SAR (W/kg):	Start Scan	End Scan	
	0.011	0.010	
Change during Scan (%)	2.71		
Max E-field (V/m):	7.45		
Max SAR (W/kg)	1g	10g	
	0.083	0.043	
Location of Max (mm):	X	Y	Z
	75.0	-20.0	-174.1

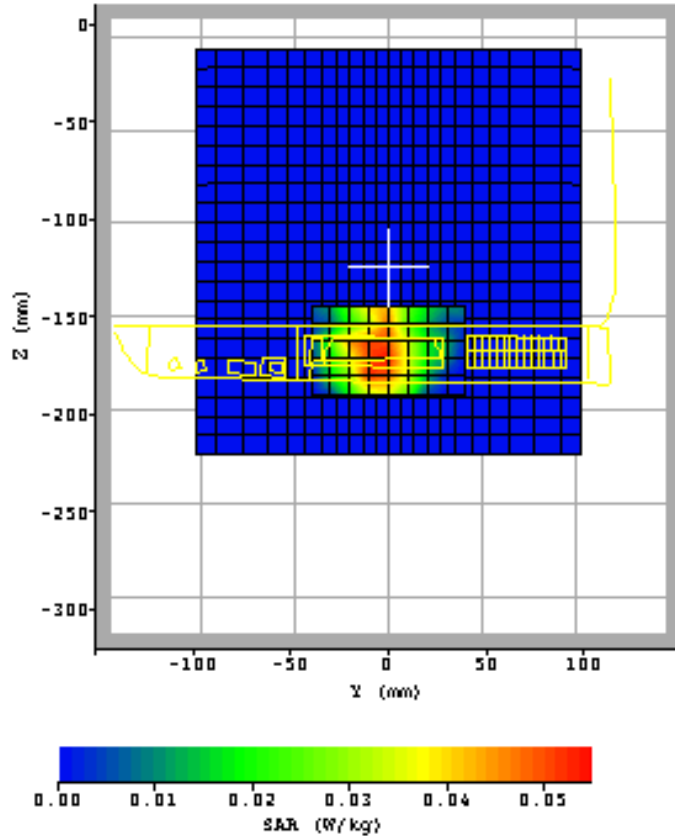


Date / Time:	2003/6/6	Position:	perpendicular 15mm
Filename:	MWL-34B1_2437per15	Phantom:	HeadBox1.csv
Device Tested:	MWL-34B1	Head Rotation:	0
Antenna:	PCB printed	Test Frequency:	2437MHz
Shape File:	MWL-34B1per.csv	Power Level:	19.11dBm

AREA SCAN:

Scan Extent:

	Min	Max	Steps
Y	-40.0	40.0	8.0
Z	-190.0	-145.0	5.0





plot #5 (1/2)

Date / Time:	2003/6/6	Position:	perpendicular 15mm
Filename:	MWL-34B1_2412per15	Phantom:	HeadBox1.csv
Device Tested:	MWL-34B1	Head Rotation:	0
Antenna:	PCB printed	Test Frequency:	2412MHz
Shape File:	MWL-34B1per.csv	Power Level:	19.33dBm

Probe:	0114																
Cal File:	SN0114_2450_CW_BODY																
Cal Factors:	<table border="1"> <thead> <tr> <th></th> <th>X</th> <th>Y</th> <th>Z</th> </tr> </thead> <tbody> <tr> <td>Air</td> <td>532</td> <td>494</td> <td>450</td> </tr> <tr> <td>DCP</td> <td>20</td> <td>20</td> <td>20</td> </tr> <tr> <td>Lin</td> <td>.528</td> <td>.528</td> <td>.528</td> </tr> </tbody> </table>		X	Y	Z	Air	532	494	450	DCP	20	20	20	Lin	.528	.528	.528
		X	Y	Z													
	Air	532	494	450													
	DCP	20	20	20													
Lin	.528	.528	.528														
Amp Gain:	2																
Averaging:	3																
Batteries Replaced:	June 6																

Liquid:	15.3cm
Type:	2450MHz body
Conductivity:	1.86865
Relative Permittivity:	50.58362
Liquid Temp (deg C):	23.8
Ambient Temp (deg C):	21
Ambient RH (%):	65
Density (kg/m3):	1000
Software Version:	0.421N
Crest Factor:	=1

ZOOM SCAN RESULTS:

Spot SAR (W/kg):	Start Scan	End Scan	
	0.009	0.010	
Change during Scan (%):	3.81		
Max E-field (V/m):	7.03		
Max SAR (W/kg)	1g	10g	
	0.072	0.038	
Location of Max (mm):	X	Y	Z
	75.0	-21.0	-173.2



FCC ID. : QVZ20020000

Report No.: EME-030697

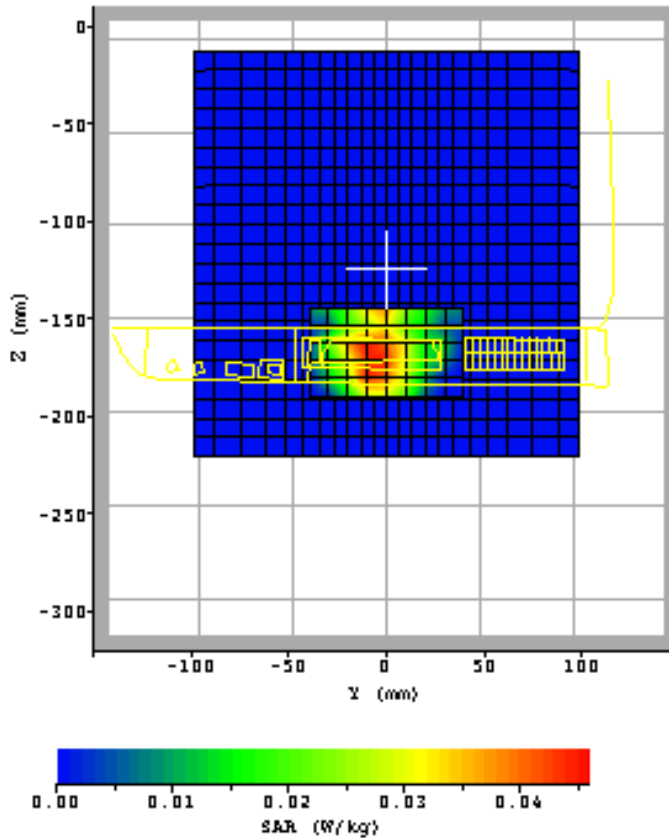
Page 32 of 61

plot #5 (2/2)

Date / Time:	2003/6/6	Position:	perpendicular 15mm
Filename:	MWL-34B1_2412per15	Phantom:	HeadBox1.csv
Device Tested:	MWL-34B1	Head Rotation:	0
Antenna:	PCB printed	Test Frequency:	2412MHz
Shape File:	MWL-34B1per.csv	Power Level:	19.33dBm

AREA SCAN:

	Min	Max	Steps
Scan Extent:			
Y	-40.0	40.0	8.0
Z	-190.0	-145.0	5.0





plot #6 (1/2)

Date / Time:	2003/6/6	Position:	perpendicular 15mm
Filename:	MWL-34B1_2462per15	Phantom:	HeadBox1.csv
Device Tested:	MWL-34B1	Head Rotation:	0
Antenna:	PCB printed	Test Frequency:	2462MHz
Shape File:	MWL-34B1per.csv	Power Level:	18.88dBm

Probe:	0114																
Cal File:	SN0114_2450_CW_BODY																
Cal Factors:	<table border="1"> <thead> <tr> <th></th> <th>X</th> <th>Y</th> <th>Z</th> </tr> </thead> <tbody> <tr> <td>Air</td> <td>532</td> <td>494</td> <td>450</td> </tr> <tr> <td>DCP</td> <td>20</td> <td>20</td> <td>20</td> </tr> <tr> <td>Lin</td> <td>.528</td> <td>.528</td> <td>.528</td> </tr> </tbody> </table>		X	Y	Z	Air	532	494	450	DCP	20	20	20	Lin	.528	.528	.528
		X	Y	Z													
	Air	532	494	450													
	DCP	20	20	20													
Lin	.528	.528	.528														
Amp Gain:	2																
Averaging:	3																
Batteries Replaced:	June 6																

Liquid:	15.3cm
Type:	2450MHz body
Conductivity:	1.86865
Relative Permittivity:	50.58362
Liquid Temp (deg C):	24.5
Ambient Temp (deg C):	21
Ambient RH (%):	65
Density (kg/m3):	1000
Software Version:	0.421N
Crest Factor=	1

ZOOM SCAN RESULTS:

Spot SAR (W/kg):	Start Scan	End Scan	
	0.019	0.018	
Change during Scan (%)	4.89		
Max E-field (V/m):	7.39		
Max SAR (W/kg)	1g	10g	
	0.083	0.044	
Location of Max (mm):	X	Y	Z
	75.0	-20.0	-173.4



FCC ID. : QVZ20020000

Report No.: EME-030697

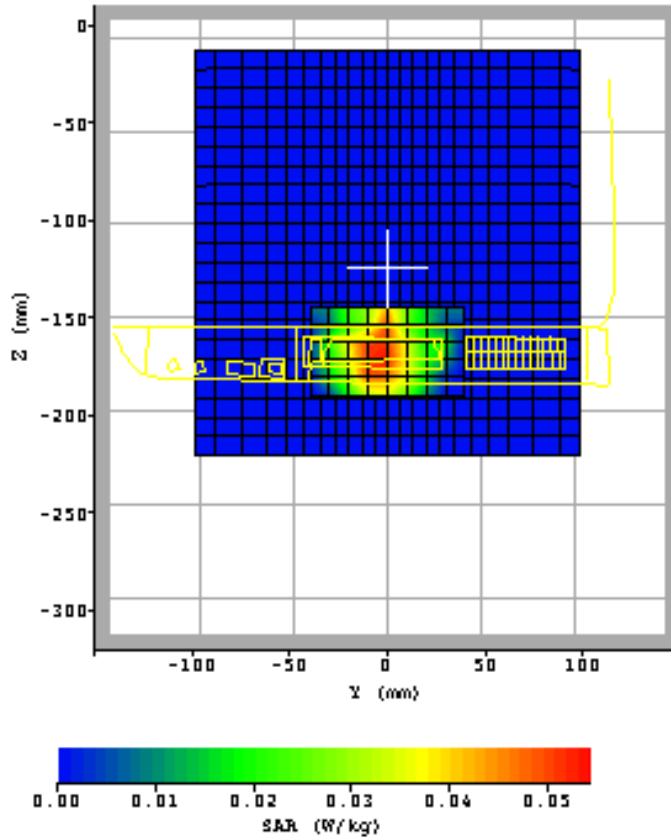
Page 34 of 61

plot #6 (2/2)

Date / Time:	2003/6/6	Position:	perpendicular 15mm
Filename:	MWL-34B1_2462per15	Phantom:	HeadBox1.csv
Device Tested:	MWL-34B1	Head Rotation:	0
Antenna:	PCB printed	Test Frequency:	2462MHz
Shape File:	MWL-34B1per.csv	Power Level:	18.88dBm

AREA SCAN:

	Min	Max	Steps
Scan Extent:			
Y	-40.0	40.0	8.0
Z	-190.0	-145.0	5.0





FCC ID. : QVZ20020000

Report No.: EME-030697

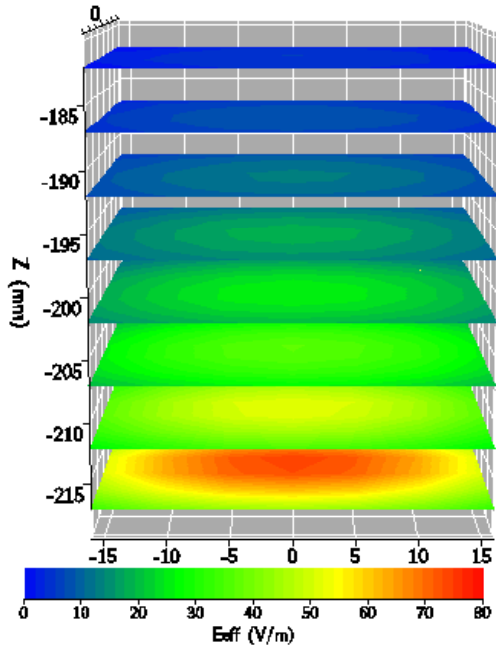
Page 35 of 61

Plot #7

Date:	2003/3/7	Position:	Bottom
Filename:	2450val5-15.txt	Phantom:	Box1.csv
Device Tested:	SARA2 system	Head Rotation:	0
Antenna:	2450dipole	Test Frequency:	2450MHz
Shape File:	none.csv	Power Level:	24dBm /CW

Probe:	0114																
Cal File:	SN0114_2450_CW_HEAD																
Cal Factors:	<table border="1"> <tr> <td></td> <td>X</td> <td>Y</td> <td>Z</td> </tr> <tr> <td>Air</td> <td>532</td> <td>494</td> <td>450</td> </tr> <tr> <td>DCP</td> <td>20</td> <td>20</td> <td>20</td> </tr> <tr> <td>Lin</td> <td>.495</td> <td>.495</td> <td>.495</td> </tr> </table>		X	Y	Z	Air	532	494	450	DCP	20	20	20	Lin	.495	.495	.495
		X	Y	Z													
	Air	532	494	450													
	DCP	20	20	20													
Lin	.495	.495	.495														
Amp Gain:	2																
Averaging:	1																
Batteries Replaced:	N/a																

Liquid:	15.1cm
Type:	2450MHz Head
Conductivity:	1.88
Relative Permittivity:	38.221
Liquid Temp (deg C):	23.1
Ambient Temp (deg C):	22.1
Ambient RH (%):	62
Density (kg/m3):	1000
Software Version:	0.421N
Crest Factor = 1	



ZOOM SCAN RESULTS:

Spot SAR (W/kg):	Start Scan	End Scan

Change during Scan (%)

Max E-field (V/m): 76.31

Max SAR (W/kg)	1g	10g
	12.54	6.23

Location of Max (mm):	X	Y	Z
	1.5	1.2	-220.0

Normalized to an input power of 1W
Averaged over 1 cm³ (1g) of tissue
50.16 W/kg



FCC ID. : QVZ20020000

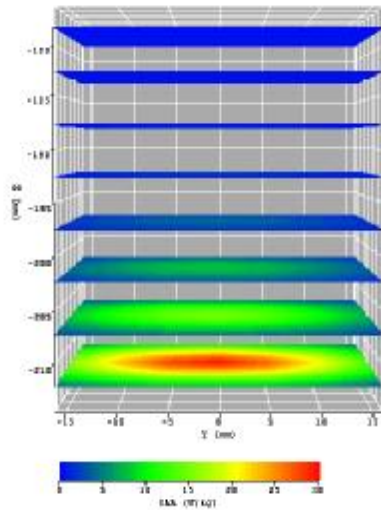
Report No.: EME-030697
Page 36 of 61

Plot #8

Date / Time:	2003/5/15	Position:	bottom of box phantom
Filename:	2450 performance check	Phantom:	HeadBox1.csv
Device Tested:	SARA2 system	Head Rotation:	0
Antenna:	2.45GHz dipole	Test Frequency:	2450MHz
Shape File:	Dipole2450.csv	Power Level:	24 dBm /CW

Probe:	0114																
Cal File:	SN0114_2450_CW_HEAD																
Cal Factors:	<table border="1"> <thead> <tr> <th></th> <th>X</th> <th>Y</th> <th>Z</th> </tr> </thead> <tbody> <tr> <td>Air</td> <td>532</td> <td>494</td> <td>450</td> </tr> <tr> <td>DCP</td> <td>20</td> <td>20</td> <td>20</td> </tr> <tr> <td>Lin</td> <td>.495</td> <td>.495</td> <td>.495</td> </tr> </tbody> </table>		X	Y	Z	Air	532	494	450	DCP	20	20	20	Lin	.495	.495	.495
		X	Y	Z													
	Air	532	494	450													
	DCP	20	20	20													
Lin	.495	.495	.495														
Amp Gain:	2																
Averaging:	3																
Batteries Replaced:	-																

Liquid:	15.3cm
Type:	2450MHz head
Conductivity:	1.85441
Relative Permittivity:	38.81939
Liquid Temp (deg C):	24.8
Ambient Temp (deg C):	22.5
Ambient RH (%):	50
Density (kg/m3):	1000
Software Version:	0.421N
Crest factor = 1	



ZOOM SCAN RESULTS:

Spot SAR (W/kg):	Start Scan	End Scan

Change during Scan (%)

Max E-field (V/m): 73.81

Max SAR (W/kg)	1g	10g
	13.32	6.22

Location of Max (mm):	X	Y	Z
	0.0	-0.3	-220.0

Normalized to an input power of 1W
Averaged over 1 cm³ (1g) of tissue

53.28 W/kg



Intertek Testing Services
ETL SEMKO

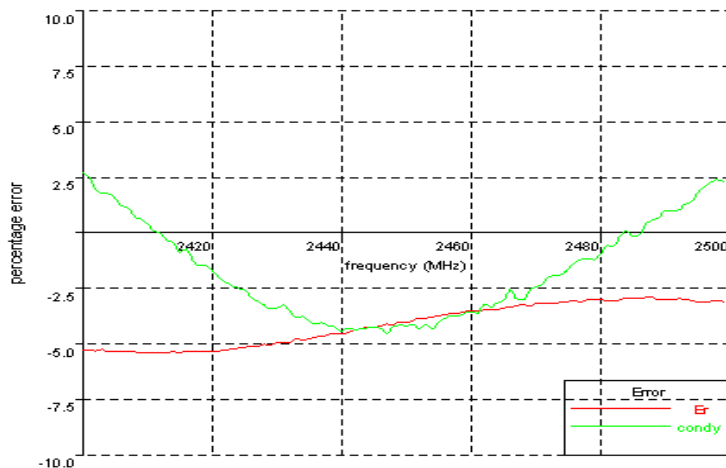
FCC ID. : QVZ20020000

Report No.: EME-030697
Page 37 of 61

APPENDIX B – 2450MHz body liquid Calibration Data



Date	06June2003	Temperature	24.0°C	Tested by	kevin
2400	49.9931597487, -1.9541083715		2450	50.5836232764, -1.8686451425	
2401	49.9859741178, -1.9511496802		2451	50.6221083954, -1.8708983376	
2402	49.960205271, -1.9419536703		2452	50.668625747, -1.8691144758	
2403	50.0036837835, -1.9392829691		2453	50.6755023542, -1.8734696276	
2404	49.9295655789, -1.9397411432		2454	50.7003374052, -1.8711724389	
2405	49.9521539435, -1.9367644672		2455	50.7246299474, -1.8785122038	
2406	49.9288292497, -1.9317174934		2456	50.7523008732, -1.8832432567	
2407	49.9372617874, -1.9305077558		2457	50.7848323045, -1.886693275	
2408	49.9249218135, -1.9245492796		2458	50.786516806, -1.888240035	
2409	49.915155195, -1.9221830772		2459	50.8166344217, -1.8913851031	
2410	49.9175204445, -1.9194439432		2460	50.8366592537, -1.8945958625	
2411	49.891786887, -1.9146527545		2461	50.8310384309, -1.8948285939	
2412	49.9009406195, -1.9135450653		2462	50.8533117184, -1.9039605293	
2413	49.9046387603, -1.9080856201		2463	50.8748159049, -1.9022255711	
2414	49.9235762866, -1.9074444712		2464	50.8518018979, -1.9077357876	
2415	49.9002649369, -1.8998576067		2465	50.8992724579, -1.9115585397	
2416	49.9283597042, -1.9036084987		2466	50.9242171741, -1.9222993342	
2417	49.9278137376, -1.8950381		2467	50.9407312078, -1.915426756	
2418	49.9230212417, -1.8910708246		2468	50.9701363343, -1.9157715604	
2419	49.9164097527, -1.89245813		2469	50.9470792076, -1.9258302711	
2420	49.9206549223, -1.8890747025		2470	50.9933375672, -1.9305593267	
2421	49.9335308651, -1.8846743712		2471	50.9995332577, -1.9336427813	
2422	49.9528617086, -1.8809704412		2472	50.9963292819, -1.9419486145	
2423	49.9824071055, -1.8788596243		2473	51.0032503641, -1.944719505	
2424	49.9978503011, -1.8776775157		2474	51.0414335586, -1.9467742125	
2425	50.0136264054, -1.8763446771		2475	51.0419916967, -1.9537054555	
2426	50.0431215123, -1.8713327745		2476	51.0512312744, -1.9599384256	
2427	50.037041273, -1.8689081756		2477	51.0324155895, -1.964613996	
2428	50.0815423348, -1.8667950186		2478	51.0824752086, -1.9662031284	
2429	50.0686192014, -1.8642669403		2479	51.0698522415, -1.9671638765	
2430	50.1153586541, -1.8656945689		2480	51.0845514707, -1.9742538913	
2431	50.1076075326, -1.8692834147		2481	51.043416973, -1.9826589907	
2432	50.1218105737, -1.8651998762		2482	51.0603046683, -1.9834147495	
2433	50.2029875955, -1.8602155354		2483	51.0646471211, -1.9942868149	
2434	50.1821066382, -1.8617745253		2484	51.10722393, -1.9996874372	
2435	50.20426027, -1.8586647748		2485	51.1017594144, -1.996345653	
2436	50.2435739925, -1.8570554744		2486	51.1049689814, -1.9988804987	
2437	50.2659196568, -1.8590096642		2487	51.1226223017, -2.0107952075	
2438	50.2986893415, -1.8576302002		2488	51.1197898424, -2.0153513837	
2439	50.3233397239, -1.8568402283		2489	51.0658069081, -2.0192560506	
2440	50.3053423971, -1.8547105923		2490	51.0846264574, -2.0268645446	
2441	50.3559735156, -1.8579281981		2491	51.059035633, -2.0275824657	
2442	50.3955713638, -1.8577785372		2492	51.0859207277, -2.0303639571	
2443	50.4407773955, -1.8592920067		2493	51.0738553957, -2.0371659826	
2444	50.4565277371, -1.8610860741		2494	51.0411045083, -2.0402524392	
2445	50.4689900181, -1.8623956732		2495	51.0087835574, -2.0503915694	
2446	50.5032253306, -1.8624374315		2496	50.9988049071, -2.0572596981	
2447	50.5370247361, -1.8588703129		2497	51.0201846921, -2.0624069448	
2448	50.5327263384, -1.8658618005		2498	51.0263836445, -2.066626476	
2449	50.5828489109, -1.8678204757		2499	51.0044165279, -2.0658803429	
			2500	51.0130307228, -2.0824777426	





Intertek Testing Services
ETL SEMKO

FCC ID. : QVZ20020000

Report No.: EME-030697

Page 39 of 61

APPENDIX C - E-Field Probe Certificate and Calibration Data
Validation dipole certificate and performance measurements



FCC ID. : QVZ20020000



Report No.: EME-030697

Page 40 of 61

Indexsar Limited

Oakfield House

Cudworth Lane

Newdigate

Surrey RH5 5DR

Tel: +44 (0) 1306 631 233

Fax: +44 (0) 1306 631 834

e-mail: enquiries@indexsar.com

Calibration Certificate
Dosimetric E-field Probe

Type: **IXP-050**

Manufacturer: **IndexSAR, UK**

Serial Number: **0114**

Place of Calibration: **IndexSAR, UK**

IndexSAR Limited hereby declares that the IXP-050 Probe named above has been calibrated for conformity to the IEEE 1528 and CENELEC En 50361 standards on the date shown below.

Date of Initial Calibration: **6th September 2002**

The probe named above will require a calibration check on the date shown below.

Next Calibration Date: **September 2003**

The calibration was carried out using the methods described in the calibration document.
Where applicable, the standards used in the calibration process are traceable to the UK's National Physical Laboratory.

Calibrated By:

Approved By:

Please keep this certificate with the calibration document. When the probe is sent for a calibration check, please include the calibration document.



IMMERSIBLE SAR PROBE

CALIBRATION REPORT

Part Number: IXP – 050

S/N 0114

6th September 2002



**Indexsar Limited
Oakfield House
Cudworth Lane
Newdigate
Surrey RH5 5DR**

Tel: +44 (0) 1306 631 233

Fax: +44 (0) 1306 631 834

e-mail: enquiries@indexsar.com



INTRODUCTION

This Report presents measured calibration data for a particular Indexsar SAR probe (S/N 0114) and describes the procedures used for characterisation and calibration.

Indexsar probes are characterised using procedures that, where applicable, follow the recommendations of CENELEC [1] and IEEE [2] standards. The procedures incorporate techniques for probe linearisation, isotropy assessment and determination of liquid factors (conversion factors). Calibrations are determined by comparing probe readings with analytical computations in canonical test geometries (waveguides, boxes and spheres) using normalised power inputs.

Each step of the calibration procedure and the equipment used is described in the sections below.

CALIBRATION PROCEDURE

1. Equipment Used

For the first part of the calibration procedure, the probe is placed in a calibration jig as pictured in Figure 1. In this position the probe can be rotated about its axis by a non-metallic belt driven by a stepper motor.

The probe is attached via its amplifier and an optical cable to a PC. A schematic representation of the test geometry is illustrated in Figure 2.

A balanced dipole (900 MHz) is inserted horizontally into the bracket attached to a second belt (Figure 1). The dipole can also be rotated about its axis. A cable connects the dipole to a signal generator, via a directional coupler and power meter. The signal generator feeds an RF amplifier at constant power, the output of which is monitored using the power meter. The probe is positioned so that its sensors line up with the rotation center of the source dipole. By recording output voltage measurements of each channel as both the probe and the dipole are rotated, data are obtained from which the spherical isotropy of the probe can be optimised and its magnitude determined.

The calibration process requires E-field measurements to be taken in air, in 900 MHz simulated brain liquid and at other frequencies/liquids as appropriate. When it is necessary to place the probe in liquid, a rectangular box made from PMMA (200mm internal width, 200mm internal height and 100mm internal depth; wall thickness 4mm) is filled with the appropriate liquid and positioned on the stand so that the probe tip is positioned within the liquid (Figure 1). The box is positioned so that its outer surface is 2mm from the dipole. The procedure follows that described in Ref [2]. Section A.5.2.1.

2. Linearising probe output

The probe channel output signals are linearised in the manner set out in Refs [1] and [2]. The following equation is utilized for each channel:

$$U_{lin} = U_{o/p} + U_{o/p}^2 / DCP \quad (1)$$



where U_{lin} is the linearised signal, U_{op} is the raw output signal in voltage units and DCP is the diode compression potential in similar voltage units.

DCP is determined from fitting equation (1) to measurements of U_{lin} versus source feed power over the full dynamic range of the probe. The DCP is a characteristic of the schottky diodes used as the sensors. For the IXP-050 probes with CW signals the DCP values are typically 0.10V (or 20 in the voltage units used by Indexsar software, which are V*200).

3. Selecting channel sensitivity factors to optimise isotropic response

The basic measurements obtained using the calibration jig (Fig 1) represent the output from each diode sensor as a function of the presentation angle of the source (probe and dipole rotation angles). The directionality of the orthogonally-arranged sensors can be checked by analysing the data using dedicated Indexsar software, which displays the data in 3D format as in Figure 3. The left-hand side of this diagram shows the individual channel outputs after linearisation (see above). The program uses these data to balance the channel outputs and then applies an optimisation process, which makes fine adjustments to the channel factors for optimum isotropic response.

The next stage of the process is to calibrate the Indexsar probe to a W&G EMR300 E-field meter in air. The principal reasons for this are to obtain conversion factors applicable should the probe be used in air and to provide an overall measure of the probe sensitivity.

A multiplier is applied to factors to bring the magnitudes of the average E-field measurements as close as possible to those of the W&G probe.

The following equation is used (where linearised output voltages are in units of V*200):

$$E_{air}^2 \text{ (V/m)} = U_{linx} * \text{Air Factor}_x + U_{liny} * \text{Air Factor}_y + U_{linz} * \text{Air Factor}_z \quad (2)$$

It should be noted that the air factors are not separately used for normal SAR testing. The IXP-050 probes are optimised for use in tissue-simulating liquids and do not behave isotropically in air.

4. 900 MHz Liquid Calibration

Conversion factors for use when the probes are immersed in tissue-simulant liquids at 900 MHz are determined either using a waveguide or by comparison to a reference probe that has been calibrated by NPL. Waveguide procedures are described later. The summary sheet indicates the method used for the probe S/N 0114.

The conversion factor, referred to as the 'liquid factor' is also applied to the measurements of each channel. The following equation is used (where output voltages are in units of V*200):



$$E_{\text{liq}}^2 \text{ (V/m)} = U_{\text{linx}} * \text{Air Factor}_x * \text{Liq Factor}_x \\ + U_{\text{liny}} * \text{Air Factor}_y * \text{Liq Factor}_y \\ + U_{\text{linz}} * \text{Air Factor}_z * \text{Liq Factor}_z \quad (3)$$

A 3D representation of the spherical isotropy for probe S/N 0114 using these factors is shown in Figure 3.

The rotational isotropy can also be determined from the calibration jig measurements and is reported as the 900MHz isotropy in the summary table. Note that waveguide measurements can also be used to determine rotational isotropy (Fig. 5).

For other frequencies, probe conversion factors are determined using waveguide cells as shown in Figure 4. The cells consist of a coax to waveguide transition and an open-ended section of waveguide containing a dielectric separator. Each waveguide cell stands in the upright position and is filled with liquid within 10 mm of the open end. The separator provides a liquid seal and is designed for a good electrical transition from air filled guide to liquid filled guide. The choice of cell depends on the portion of the frequency band to be examined and the choice of liquid used. The depth of liquid ensures there is negligible radiation from the waveguide open top and that the probe calibration is not influenced by reflections from nearby objects. The return loss at the coaxial connector of the filled waveguide cell is measured initially using a network analyser and this information is used subsequently in the calibration procedure. The probe is positioned in the centre of the waveguide and is adjusted vertically or rotated using stepper motor arrangements. The signal generator is connected to the waveguide cell and the power is monitored with a coupler and a power meter. A fuller description of the waveguide method is given below.

The liquid dielectric parameters used for the probe calibrations are listed in the Tables below. The final calibration factors for the probe are listed in the summary chart.

WAVEGUIDE MEASUREMENT PROCEDURE

The calibration method is based on setting up a calculable specific absorption rate (SAR) in a vertically-mounted WG8 (R22) waveguide section [1]. The waveguide has an air-filled, launcher section and a liquid-filled section separated by a matching window that is designed to minimise reflections at the liquid interface. A TE_{01} mode is launched into the waveguide by means of a N-type-to-waveguide adapter. The power delivered to the liquid section is calculated from the forward power and reflection coefficient measured at the input to the waveguide. At the centre of the cross-section of the waveguide, the local spot SAR in the liquid as a function of distance from the window is given by functions set out in IEEE1528 as below:

Because of the low cutoff frequency, the field inside the liquid nearly propagates as a TEM wave. The depth of the medium (greater than three penetration depths) ensures that reflections at the upper surface of the liquid are negligible. The power absorbed in the liquid is determined by measuring the waveguide forward and reflected power. Equation (4) shows the relationship between the SAR at the cross-sectional center of the lossy waveguide and the longitudinal distance (z) from the dielectric separator



$$SAR(z) = \frac{4(P_f - P_b)}{rabd} e^{-2z/d} \quad (4)$$

where the density r is conventionally assumed to be 1000 kg/m^3 , ab is the cross-sectional area of the waveguide, P_f and P_b are the forward and reflected power inside the lossless section of the waveguide, respectively. The penetration depth d , which is the reciprocal of the waveguide-mode attenuation coefficient, is determined from a scan along the z -axis and compared with the theoretical value determined from Equation (5) using the measured dielectric properties of the lossy liquid.

$$d = \left[\text{Re} \left\{ \sqrt{(p/a)^2 + j\omega m_o (s + j\omega e_o e_r)} \right\} \right]^{-1} \quad (5)$$

Table A.1 of [1] can be used for designing calibration waveguides with a return loss greater than 30 dB at the most important frequencies used for personal wireless communications. Values for the penetration depth for these specific fixtures and tissue-simulating mixtures are also listed in Table A.1.

According to [1], this calibration technique provides excellent accuracy, with standard uncertainty less than 3.6% depending on the frequency and medium. The calibration itself is reduced to power measurements traceable to a standard calibration procedure. The practical limitation to the frequency band of 800 to 2500 MHz because of the waveguide size is not severe in the context of compliance testing.

CALIBRATION FACTORS MEASURED FOR PROBE S/N 0114

The probe was calibrated at 1800, 1900 and 2450MHz MHz in liquid samples representing both brain liquid and body fluid at these frequencies. The calibration was for CW signals only, and the axis of the probe was parallel to the direction of propagation of the incident field i.e. end-on to the incident radiation. The axial isotropy of the probe was measured by rotating the probe about its axis in 10 degree steps through 360 degrees in this orientation.

The reference point for the calibration is in the centre of the probe's cross-section at a distance of 2.5 mm from the probe tip in the direction of the AD converter. A value of 2.5 mm should be used for the tip to sensor offset distance in the software.

It is important that the diode compression point and air factors used in the software are the same as those quoted in the results tables, as these are used to convert the diode output voltages to a SAR value.

DIELECTRIC PROPERTIES OF LIQUIDS

The dielectric properties of the brain and body tissue-simulant liquids employed for calibration are listed in the tables below. The measurements were performed using an Indexsar DiLine measurement kit, which uses the TEM method as recommended in [2].



AMBIENT CONDITIONS

Measurements were made in the open laboratory laboratory at $23 \pm 0.5^{\circ}\text{C}$. The temperature of the liquids in the waveguide used was measured using a mercury thermometer.

GSM RESPONSE

SAR probes are required to measure the effective value (RMS value) of the electric field strength. The averaging time is defined in the standards as being over 6 minutes but with most of the signals that occur in the real world, such a long averaging time is unnecessary since the fluctuations are eliminated with significantly shorter averaging times. With most signals, a much shorter averaging time is sufficient. For example the GSM frame rate is 120mS and averaging over this time period will remove the fluctuations.

In diode probes, a single Schottky diode is used as the detector for each of the three channels (X, Y and Z). For small field strengths, these offer a very good approximation to a true RMS rectifier. For higher field strengths, higher or lower values than the RMS value can be displayed - depending on the modulation frequency.

The theoretical maximum deviation from the RMS value can be derived based on the behavior of the two extremes [4]:

An average-value rectifier

- displays a value proportional to the average value of the magnitude of a measured quantity.

A peak-value rectifier

- displays a value proportional to the peak value of the magnitude of a measured quantity

The proportionality factor for a practical probe is chosen so that the probe reads the true RMS value for a continuous (CW) signal.

For pulsed signals, a diode rectifier must deliver a value lying somewhere between the two extremes of an average value rectifier and a peak value rectifier. By way of example, for a GSM signal with a 1 in 8 duty cycle (ratio of 'on' time to total time), the power measurement at higher powers can vary between being a factor of 8 too low (average value extreme) and a factor of 8 too high (peak-value extreme).

The actual behaviour is complex as it depends on the period of the modulation in relation to various time constants in the measuring system. These include the holding time of the diode (typically 50 uS), the time constant of the high-resistance leads and the time constant and integration periods of the measurement electronics. Also, the modulation periods are complex – GSM has a basic burst rate of 4.615mS, but the full modulation scheme only repeats every 120mS.



To correct for the errors due to the diode response to pulsed signals, a multiplier can be added to the second term of Equation 1 (see earlier). In principle, this multiplier can have a range for a GSM signal of between 8 and 1/8. The correction scheme will

$$U_{\text{lin}} = U_{\text{o/p}} + U_{\text{o/p}}^2 * \text{PCF} / \text{DCP} \quad (4)$$

Where PCF is a pulse correction factor ranging between the duty cycle and the reciprocal of the duty cycle.

Indexsar SAR probes show a qualitatively similar behaviour in response to GSM signals, but with a much lesser degree of over or underestimation than indicated by the possible ranges above. Indeed, for many Indexsar probes, the PCF has been established by measurement to be close to unity. A probe with a unity PCF reads true RMS for a pulsed signal without correction.

The PCF has the effect of altering the effective diode compression potential and a modification to the DCP value is how the GSM correction is implemented in the Indexsar probe calibration scheme.

The modified DCP values for GSM are included in the summary page. The value has been determined by finding the modified DCP required to linearise the probe response as indicated in Figure 7.

Non-amplitude modulated carriers can be considered as CW as far as the probe calibration is concerned.

The effects of amplitude modulation of the CDMA signal on SAR measurements has been considered in a draft paper [see ref. 4] submitted to IEEE SCC-34.



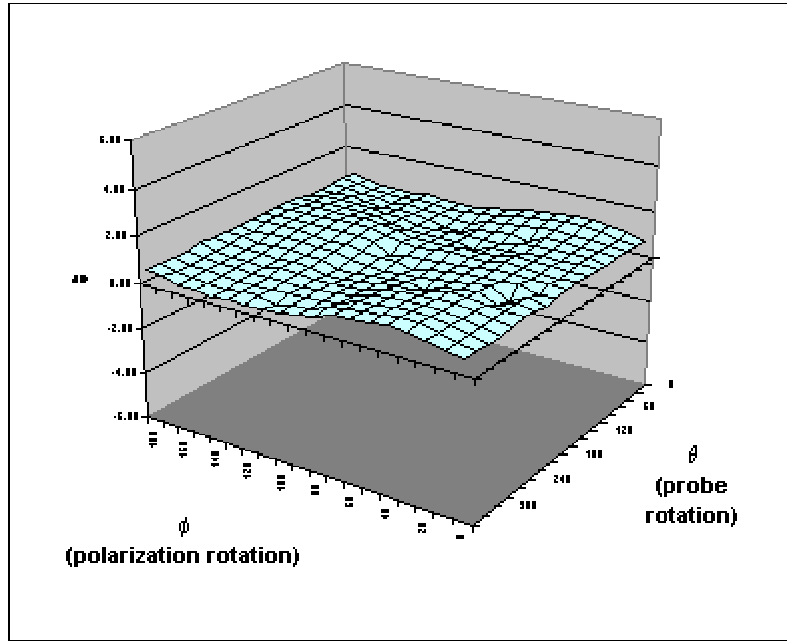
SUMMARY OF CALIBRATION FACTORS FOR PROBE IXP-050 S/N 0114

IXP-050

S/N0114

06/08/2002

Spherical isotropy measured at 900 MHz 0.50 (+/-) dB



	X	Y	Z	
Air factors	532	494	450	(V*200)
DCPs CW	20	20	20	(V*200)
DCPs GSM	7	7	7	(V*200)

f (MHz)	Axial isotropy (+/- dB)		SAR conversion factors (liq/air)		Notes
	BRAIN	BODY	BRAIN	BODY	
900	0.10	<i>0.10</i>	0.340	<i>0.374</i>	3, 1
1800	0.08	0.08	0.381	0.417	
1900	0.09	0.08	0.387	0.417	
2450	0.08	0.08	0.495	0.528	

- Notes**
- 1) Extrapolated values in italics
 - 2) Calibrations done at 22C +/- 2C
 - 3) Probe calibration by substitution against NPL-calibrated probe (Probe IXP-050 S/N0071; NPL Cal Rept. No: EF07/2002/03/IndexSAR)
 - 4) Waveguide calibration
 - 5) Checked using box-phantom validation test

(the graph shows a simple, spreadsheet representation of surface shown in 3D in Figure 3 below)



PROBE SPECIFICATIONS

Indexsar probe 0106, along with its calibration, is compared with CENELEC and IEEE standards recommendations (Refs [1] and [2]) in the Tables below. A listing of relevant specifications is contained in the tables below:

Dimensions	S/N 0114	CENELEC [1]	IEEE [2]
Overall length (mm)	350		
Tip length (mm)	10		
Body diameter (mm)	12		
Tip diameter (mm)	5.2	8	8
Distance from probe tip to dipole centers (mm)	3.0		

Dynamic range	S/N 0114	CENELEC [1]	IEEE [2]
Minimum (W/kg)	0.01	<0.02	0.01
Maximum (W/kg) N.B. only measured to 35 W/kg	>35	>100	100

Linearity of response	S/N 0114	CENELEC [1]	IEEE [2]
Over range 0.01 – 100 W/kg (+/- dB)	0.125	0.50	0.25

Isotropy (measured at 900MHz)	S/N 0114	CENELEC [1]	IEEE [2]
Axial rotation with probe normal to source (+/- dB) at 900, 1800, 1900 and 2450 MHz	Max. 0.10 (see summary table)	0.5	0.25
Spherical isotropy covering all orientations to source (+/- dB)	0.50	1.0	0.50

Construction	Each probe contains three orthogonal dipole sensors arranged on a triangular prism core, protected against static charges by built-in shielding, and covered at the tip by PEEK cylindrical enclosure material. No adhesives are used in the immersed section. Outer case materials are PEEK and heat-shrink sleeving.
Chemical resistance	Tested to be resistant to glycol and alcohol containing simulant liquids but probes should be removed, cleaned and dried when not in use.



REFERENCES

- [1] CENELEC, EN 50361, July 2001. Basic Standard for the measurement of specific absorption rate related to human exposure to electromagnetic fields from mobile phones.
- [2] IEEE 1528, Recommended practice for determining the spatial-peak specific absorption rate (SAR) in the human body due to wireless communications devices: Experimental techniques.
- [3] Calibration report on SAR probe IXP-050 S/N 0071 from National Physical Laboratory. Test Report EF07/2002/03/IndexSAR. Dated 20 February 2002.
- [4] The response of Indexsar SAR probes to amplitude modulated (pulsed) RF signals, Indexsar Support document IXS211.

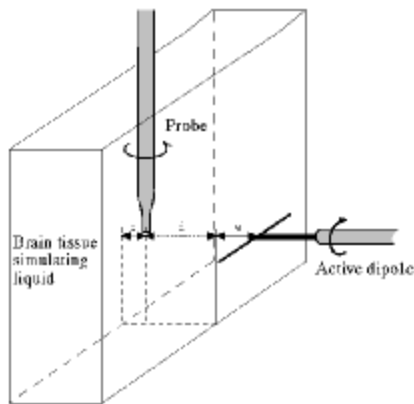
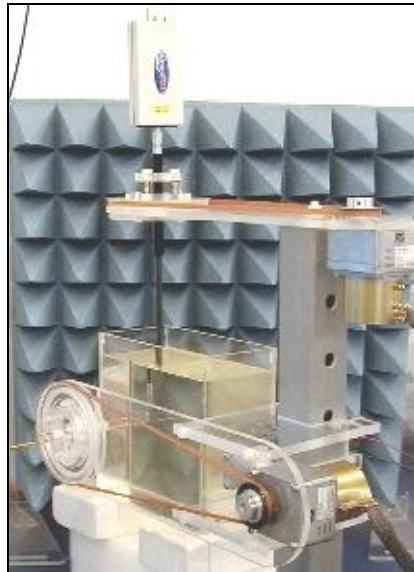


Figure 1. Calibration jig showing probe, dipole and box filled with simulated brain liquid (see Ref [2], Section A.5.2.1)

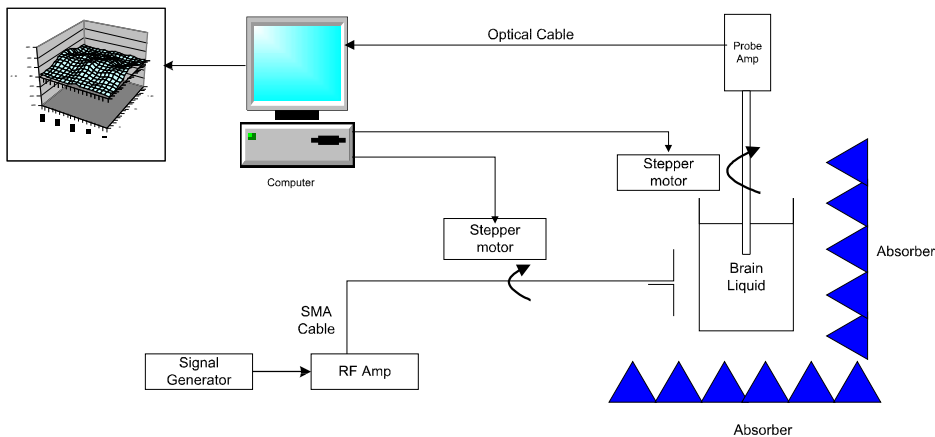


Figure 2. Schematic diagram of the test geometry used for isotropy determination

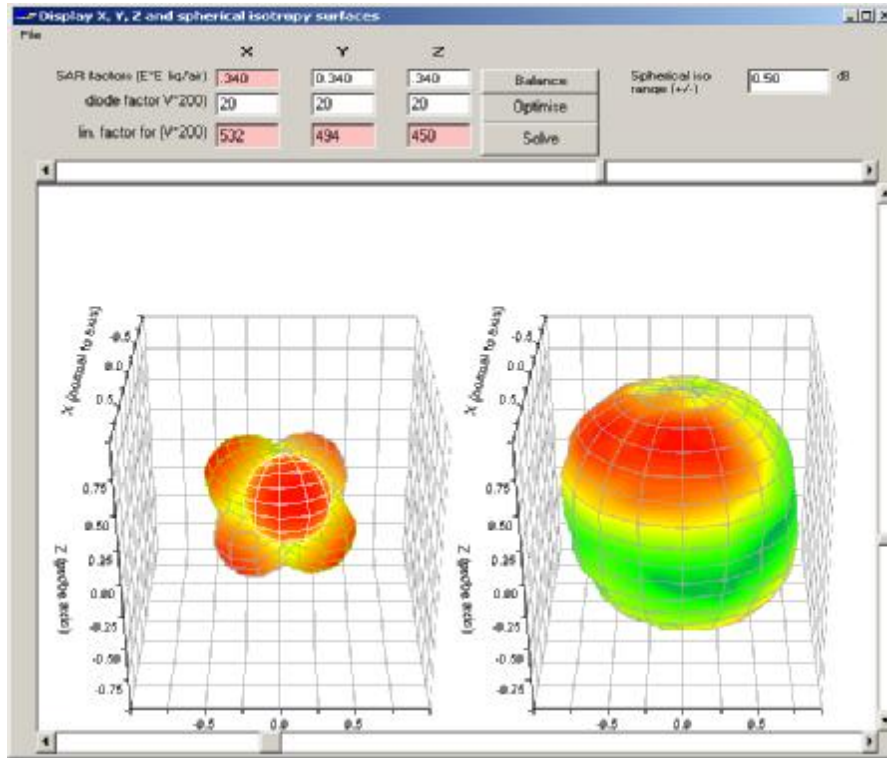


Figure 3. Graphical representation of the probe response to fields applied from each direction. The diagram on the left shows the individual response characteristics of each of the three channels and the diagram on the right shows the resulting probe sensitivity in each direction. The colour range in the figure images the lowest values as blue and the maximum values as red. For the probe S/N 0114, this range is (+/-) 0.50 dB. The probe is more sensitive to fields parallel to the axis and less sensitive to fields normal to the probe axis.

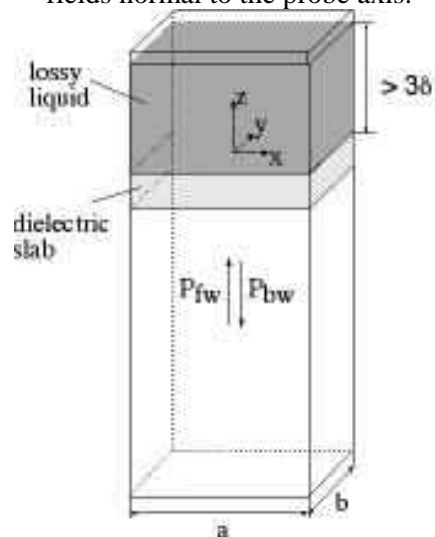


Figure 4. Geometry used for waveguide calibration (after Ref [2]. Section A.3.2.2)

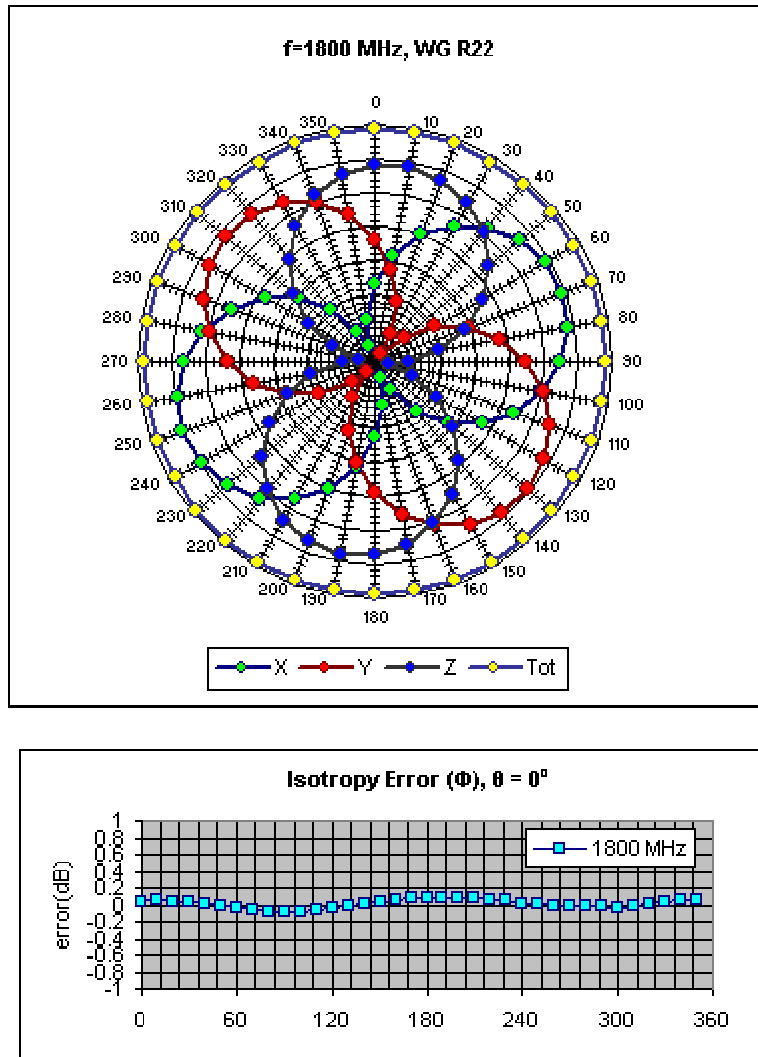


Figure 5. Example of the rotational isotropy of probe S/N 0114 obtained by rotating the probe in a liquid-filled waveguide at 1800 MHz. Similar distributions are obtained at the other test frequencies (1900 and 2450 MHz) both in brain liquids and body fluids (see summary table)

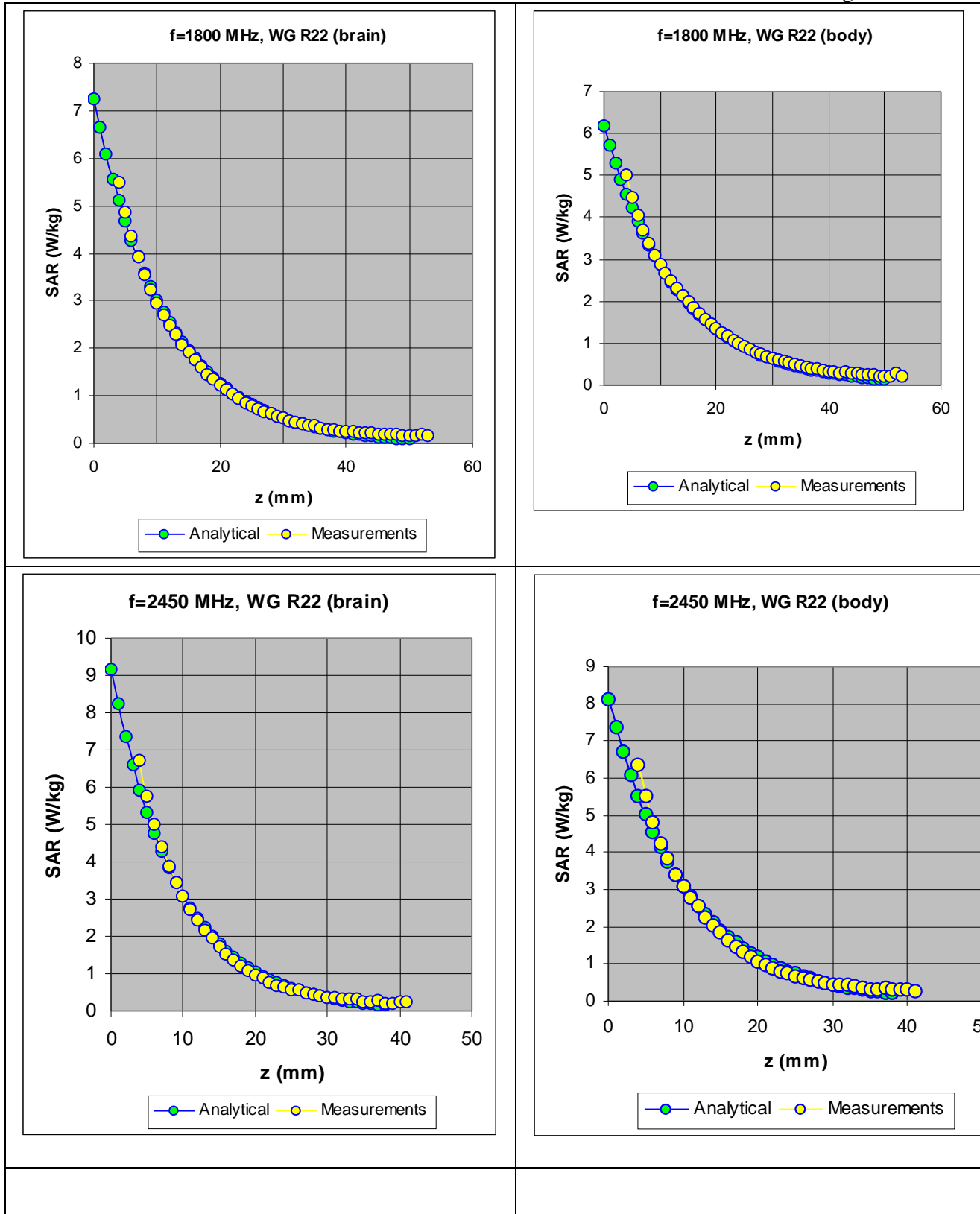


Figure 6. The measured SAR decay function along the centreline of the R22 waveguide with conversion factors adjusted to fit to the theoretical function for the particular dimension, frequency, power and liquid properties employed.

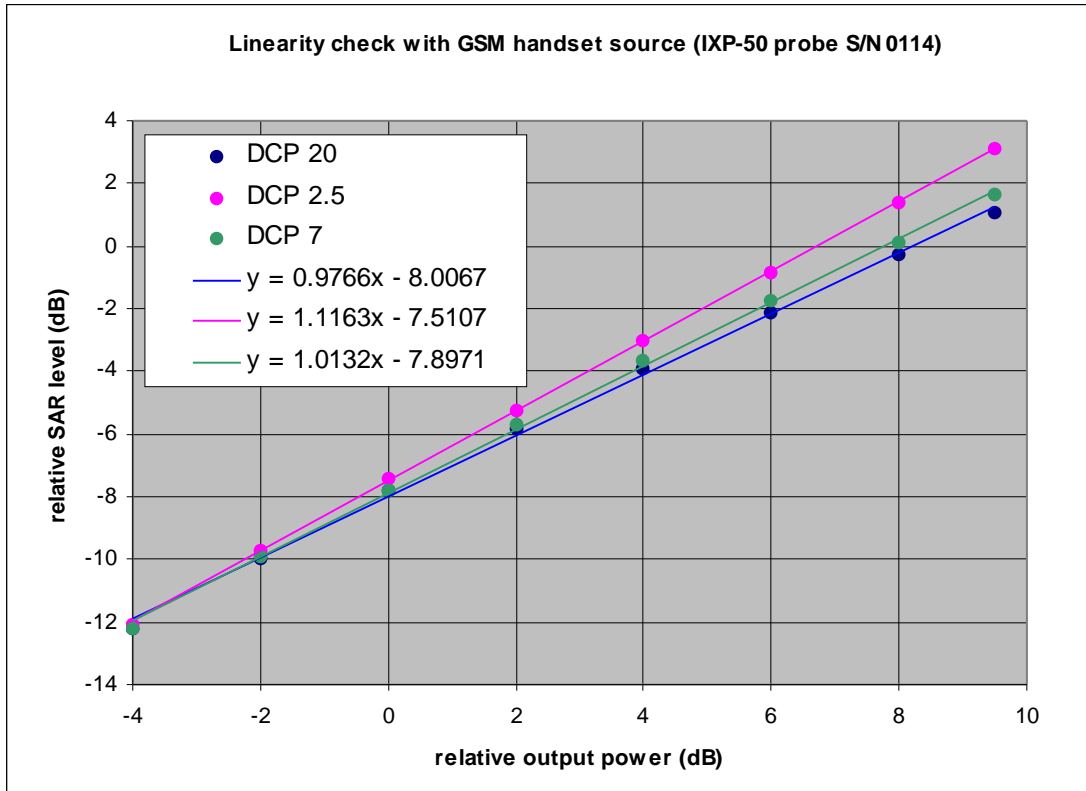


Figure 7. The GSM response of IXP-050 probe S/N 0114 at 1800MHz (max. SAR level 1.6 W/kg)

Table indicating the dielectric parameters of the liquids used for calibrations at each frequency

<i>Liquid used</i>	<i>Relative permittivity (measured)</i>	<i>Conductivity (S/m) (measured)</i>
835 MHz BRAIN	42.85	0.90
900 MHz BRAIN	42.43	1.01
1800 MHz BRAIN	39.09	1.37
1800 MHz BODY	52.53	1.49
1900 MHz BRAIN	38.6	1.48
1900 MHz BODY	52.21	1.60
2450 MHz BRAIN	38.13	1.82
2450 MHz BODY	55.28	1.92



Intertek Testing Services
ETL SEMKO

FCC ID. : QVZ20020000

Report No.: EME-030697
Page 56 of 61

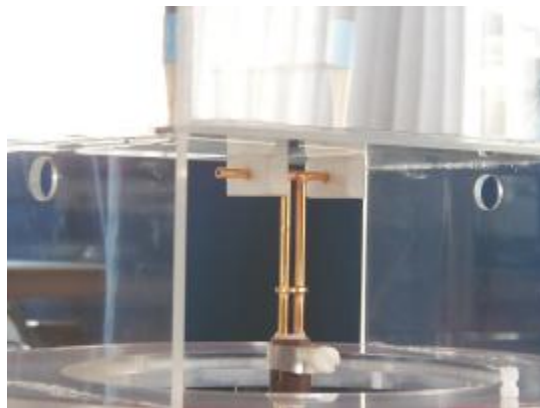


Report No. SN0048_2450
26th March 2003

INDEXSAR
2450MHz validation Dipole
Type IXD-245 S/N 0048

Performance measurements

- *MI Manning*



**Indexsar, Oakfield House, Cudworth Lane,
Newdigate, Surrey RH5 5DR. UK.**

Tel: +44 (0) 1306 631233 Fax: +44 (0) 1306 631834

e-mail: enquiries@indexsar.com



Intertek Testing Services

ETL SEMKO

FCC ID. : QVZ20020000

Report No.: EME-030697

Page 57 of 61



Indexsar Limited
Oakfield House
Cudworth Lane
Newdigate
Surrey RH5 5DR

Tel: +44 (0) 1306 631 233

Fax: +44 (0) 1306 631 834

e-mail: enquiries@indexsar.com

Calibration / Conformance statement
Balanced Validation dipole

Type:	IXD-245 2450MHz
Manufacturer:	IndexSAR, UK
Serial Number:	0048
Place of Calibration:	IndexSAR, UK


IndexSAR Limited hereby declares that the IXD series dipole named above has been checked for conformity to the specifications given in the draft IEEE 1528 and CENELEC En 50361 standards on the date shown below.


Date of Calibration/Check:	26th March 2003
----------------------------	-----------------------------------

The dipole named above should be periodically re-checked using the procedures set out in the dipole calibration document. It is important that the cautions regarding handling of the dipoles (given in the calibration document) are adhered to.

Next Calibration Date:	March 2005
------------------------	-------------------

The calibration measurements were carried out using the methods described in the calibration document. Where applicable, the standards used in the calibration process are traceable to the UK's National Physical Laboratory.

Calibrated By: 

Approved By: 



1. Tests on Validation Dipole

Tests have been performed on a balanced dipole made for 2450MHz application according to the construction guidelines, dimensions and tolerances given in the draft IEEE1528 standard [1]. Measurements have been made of the impedance and return loss when positioned against the liquid-filled phantom and a validation test has been performed according to the procedures set out in IEEE 1528 [1].

2. Measurement Conditions

Measurements were performed using a box-shaped phantom made of PMMA with dimensions designed to meet the accuracy criteria for reasonably-sized phantoms that do not have liquid capacities substantially in excess of the volume of liquid required to fill the Indexsar upright SAM phantoms used for SAR testing of handsets against the ear.

An HP 8753B vector network analyser was used for the return loss measurements.

The dipole was placed in a special holder made of low-permittivity, low-loss materials. This holder enables the dipole to be positioned accurately in the centre of the base of the Indexsar box-phantom used for flat-surface testing and validation checks.

The validation dipoles are supplied with special spacers made from a low-permittivity, low-loss foam material. These spacers are fitted to the dipole arms to ensure that, when the dipole is offered up to the phantom surface, the spacing between the dipole and the liquid surface is accurately aligned according to the guidance in the relevant standards documentation. The spacers are rectangular with a central hole equal to the dipole arm diameter and dimensioned so that the longer side can be used to ensure a spacing of 15mm from the liquid in the phantom (for tests at 900MHz and below) and the shorter side can be used for tests at 1800MHz and above to ensure a spacing of 10mm from the liquid in the phantom. The spacers are made on a CNC milling machine with an accuracy of $1/40^{\text{th}}$ mm but they may suffer wear and tear and need to be replaced periodically. The material used is Rohacell, which has a relative permittivity of approx. 1.05 and a negligible loss tangent.

The apparatus supplied by Indexsar for dipole validation tests thus includes:

Balanced dipoles for each frequency required are dimensioned according to the guidelines given in IEEE 1528 [1]. The dipoles are made from semi-rigid 50 Ohm co-ax, which is joined by soldering and is gold-plated subsequently. The constructed dipoles are easily deformed, if mis-handled, and periodic checks need to be made of their symmetry.

Rohacell foam spacers designed for presenting the dipoles to 2mm thick PMMA box phantoms. These components also suffer wear and tear and should be replaced when the central hole is a loose-fit on the dipole arms or if the edges are too worn to ensure accurate alignment. The standard spacers are dimensioned for use with 2mm wall thickness (additional spacers are available for 4mm wall thickness).

3. SAR Validation Measurement

A SAR validation check was performed with the box-phantom located on the SARA2 phantom support base on the SARA2 robot system. Tests were then conducted at a feed power level of approx. 0.25W. The actual power level was recorded and used to normalise the results obtained to the standard input power conditions of 1W (forward power). The ambient temperature was 24°C.



FCC ID. : QVZ20020000

Report No.: EME-030697

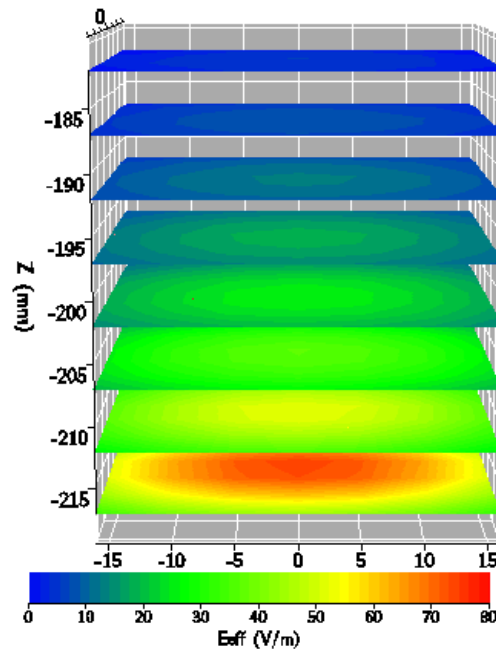
Page 59 of 61

The phantom was filled with a 2450MHz brain liquid using a recipe from [1], which was measured using an Indexasar DiLine kit at 2450MHz. Measurements were taken at 23°C and 30°C and interpolation was used to find the properties at 24°C which were as below:

Relative Permittivity **39.221**
Conductivity **1.8714 S/m**

The SARA2 software version 0.420N was used with an Indexasar probe previously calibrated using waveguide techniques.

The 3D measurement made using the dipole at the bottom of the phantom box is shown below:



The volume-averaged SAR results, normalised to an input power of 1W (forward power) are:

Averaged over 1 cm³ (1g) of tissue **51.376 W/kg**
Averaged over 10cm³ (10g) of tissue **23.888 W/kg**

These results can be compared with Table 8.1 in [1]. The agreement is within 10%.

4. Dipole impedance and return loss

The dipoles are designed to have low return loss ONLY when presented against a lossy-phantom at the specified distance. A Vector Network Analyser (VNA) was used to perform a return loss measurement on the specific dipole when in the measurement-location against the box phantom. The distance was as specified in the standard i.e. 10mm from the liquid (for 2450MHz). The Indexasar foam spacers (described above) were used to ensure this condition during measurement.



FCC ID. : QVZ20020000

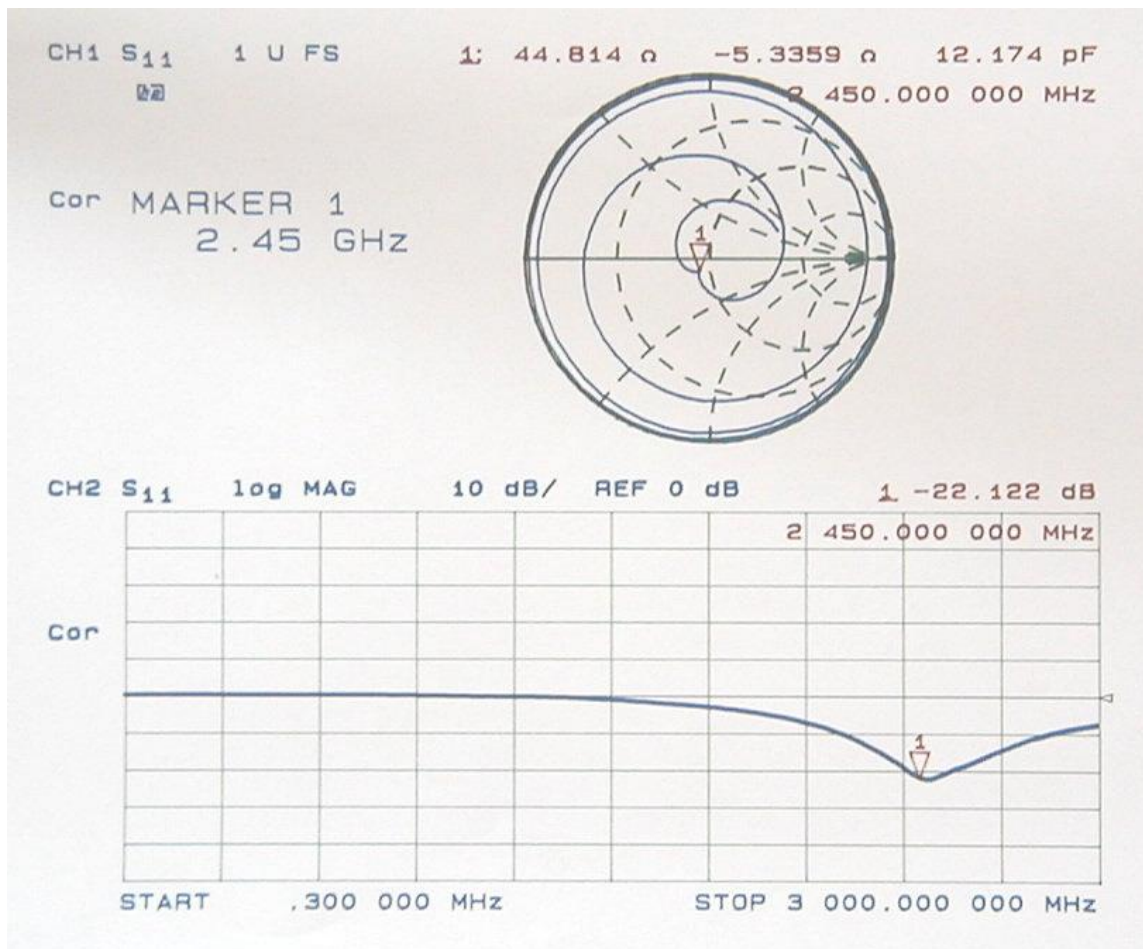
Report No.: EME-030697

Page 60 of 61

The impedance was measured at the SMA-connector with the network analyser.
The following parameters were measured:

Dipole impedance at 2450 MHz $\text{Re}\{Z\} = 44.814 \Omega$
 $\text{Im}\{Z\} = -5.3359 \Omega$

Return loss at 2450MHz **-22.122 dB**



5. Dipole handling

The dipoles are made from standard, copper-sheathed coaxial cable. In assembly, the sections are joined using ordinary soft-soldering. This is necessary to avoid excessive heat input in manufacture, which would destroy the polythene dielectric used for the cable. The consequence of the construction material and the assembly technique is that the dipoles are fragile and can be deformed by rough handling. Conversely, they can be straightened quite easily as described in this report.

If a dipole is suspected of being deformed, a normal workshop lathe can be used as an alignment jig to restore the symmetry. To do this, the dipole is first placed in the headstock of the lathe (centred on the plastic or brass spacers) and the headstock is rotated by hand (do NOT use the motor). A marker (lathe tool or similar) is brought up close to the end of one dipole arm and then the headstock is rotated by 0.5 rev. to check the opposing arm. If they are not balanced, judicious deformation of the arms can be used to



restore the symmetry.

If a dipole has a failed solder joint, the dipole can be fixed down in such a way that the arms are co-linear and the joint re-soldered with a reasonably-powerful electrical soldering iron. Do not use gas soldering irons. After such a repair, electrical tests must be performed as described below.

Please note that, because of their construction, the dipoles are short-circuited for DC signals.

6. Tuning the dipole

The dipole dimensions are based on calculations that assumed specific liquid dielectric properties. If the liquid dielectric properties are somewhat different, the dipole tuning will also vary. A pragmatic way of accounting for variations in liquid properties is to 'tune' the dipole (by applying minor variations to its effective length). For this purpose, Indexasar can supply short brass tube lengths to extend the length of the dipole and thus 'tune' the dipole. It cannot be made shorter without removing a bit from the arm. An alternative way to tune the dipole is to use copper shielding tape to extend the effective length of the dipole. Do both arms equally.

It should be possible to tune a dipole as described, whilst in place in the measurement position as long as the user has access to a VNA for determining the return loss.

7. Reference

[1] Draft recommended practice for determining the peak spatial-average specific absorption rate (SAR) in the human body due to wireless communications devices: Measurement Techniques. Draft CD1.1 – December 29, 2002.