

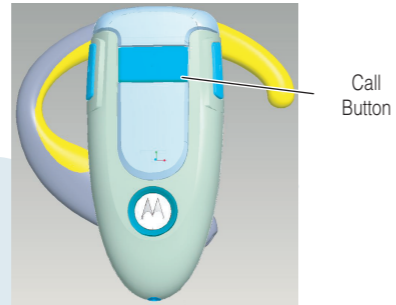
## Quick Use H500 Bluetooth® Handsfree Headset

**IMPORTANT:**  
Be sure to first follow the **Quick Start Guide** on the reverse side of this guide to complete initial setup of your H500.

### TURNING ON AND OFF

**To turn your headset on,** press the Call button. The LED indicator light flashes when the power is on.

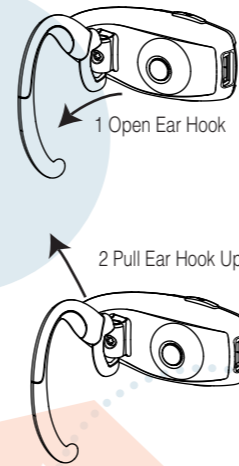
**To turn you headset off,** press the Call button. The LED indicator light turns off when the power is off.



### CHANGING FOR LEFT EAR WEAR

You can wear your H500 headset on your left or right ear. The headset comes ready for the right ear. To change the headset for the left ear:

- 1 Open the ear hook 90 degrees from the headset.
- 2 Gently lift and pull the top of the ear hook up and off the upper hinge pin. Then, pull it away to remove it.
- 3 Flip the headset over.
- 4 Hook the bottom of the ear hook onto the lower hinge pin, then lift and pull the top of the ear hook over the upper hinge pin.

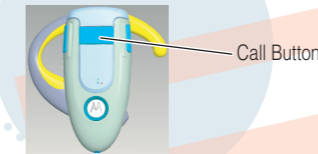


### CHANGING VOLUME BUTTON ORIENTATION

If you change your headset for left ear wear, you can also change the orientation of the volume buttons.

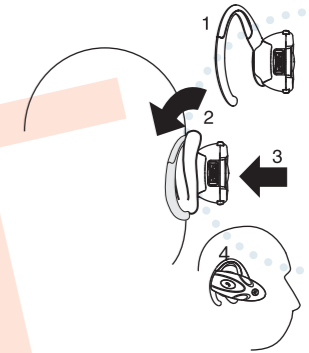
- 1 Turn the headset power off.
- 2 Press the Call button and the volume button you want to assign as the "volume up" button until the LED indicator light flashes twice.

The headset power turns on.



### WEARING THE HEADSET

- 1 Open the ear piece.
- 2 Loop the ear piece over your ear.
- 3 Position the microphone as necessary.
- 4 Press the headset to your ear.



### MAKING CALLS

**To make a voice dial call,** short press the Call button and speak the name.

**To end a call,** short press the Call button.

**To put an active call on hold,** long press the Call button.

**To resume a call on hold,** long press the Call button.

**To receive a call,** short press the Call button.

**To reject a call,** long press the Call button.

**To answer a second incoming call,** long press the Call button (places first call on hold).

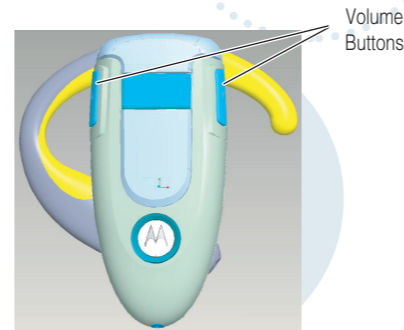
**To toggle between two active calls,** long press the Call button.

**To transfer a call from the phone to headset,** short press the Call button.

*Note: Your H500 supports both Handsfree and Headset Profiles. Accessing call functions depends upon which profile your phone supports. See your phone's user's guide for more information.*

### MUTING A CALL

To mute a call, press both volume buttons.



### LED INDICATOR LIGHTS

The LED indicator light provides information about your headset status.

#### With the Charger Plugged In

Headset Indicator	Headset Status
Off	Charging in progress
On (steady)	Charging complete

#### With No Charger Plugged In

Headset Indicator	Headset Status
Off	Power off
On (steady)	Pairing mode
10 rapid flashes	Pairing successful
Pulsing (2 seconds on, 6 seconds off)	Connected (on a call)
Flashing (.1 second on, 2.9 seconds off)	Standby (not on call)

### AUDIO TONES

The audio tones provide information about your headset status.

Audio Tone	Headset Status
Single high tone when pressing volume button	Volume minimum or maximum reached
Five rapid high tones repeated every 20 sec.	Low battery
No audio indications; deteriorating audio quality	Out of range
Series of 4 tones, low to high	Audio link open (headset mode) Active call (handsfree mode)
Ring tone	Incoming call
Single high tone	Pairing confirmation
Single low tone	Voice activation
Dual high/low tone	Voice tag not recognized
Single high tone	End call

### FOR MORE INFORMATION ON USING YOUR MOTOROLA H500

Visit us at [www.hellomoto.com/bluetooth](http://www.hellomoto.com/bluetooth) and click **Support**.

### SUPPORT

If you need more help, contact us at **1- 877-MOTOBLU**.