

Figure 1. Conducted Emission Test Setup : PCoIP Mode



Figure 2. Conducted Emission Test Setup : VGA Mode

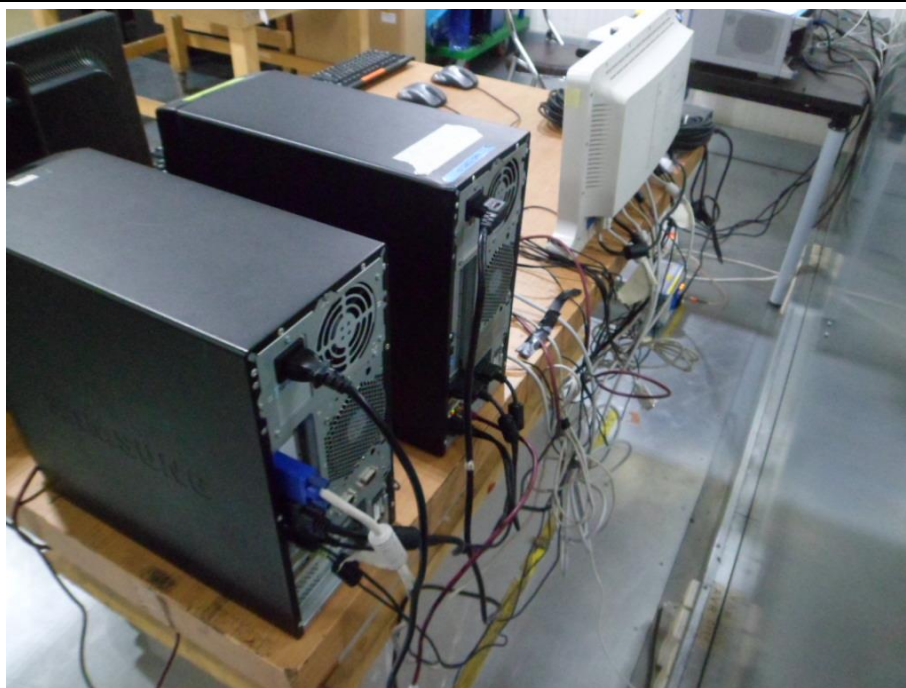


Figure 3. Radiated Emission Test Setup (30 MHz ~ 1 GHz) : PColP Mode

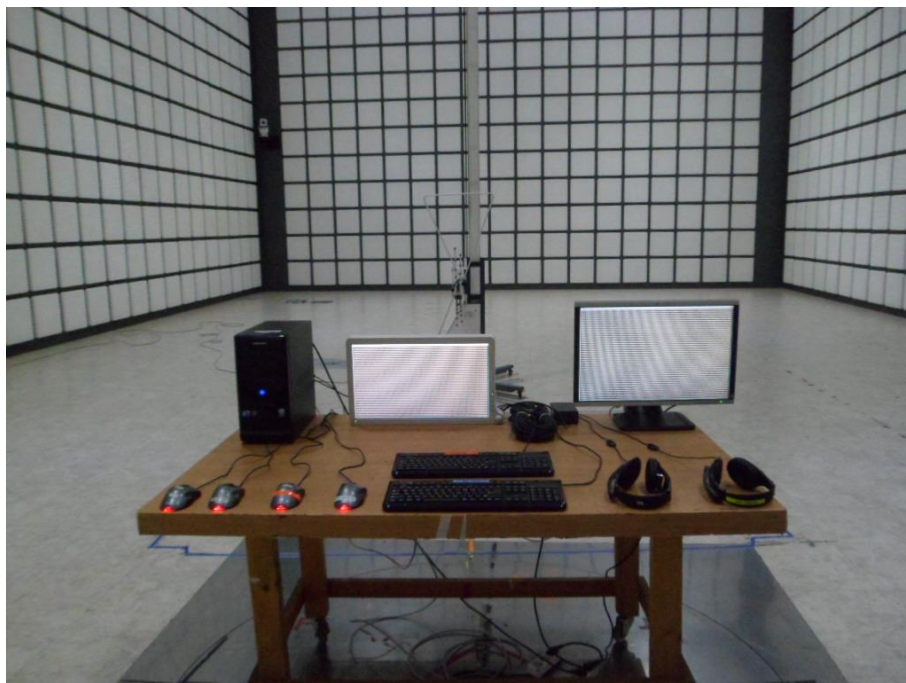


Figure 4. Radiated Emission Test Setup (1 ~ 6) GHz : PColP Mode



Figure 5. Radiated Emission Test Setup (30 MHz ~ 1 GHz) : VGA Mode

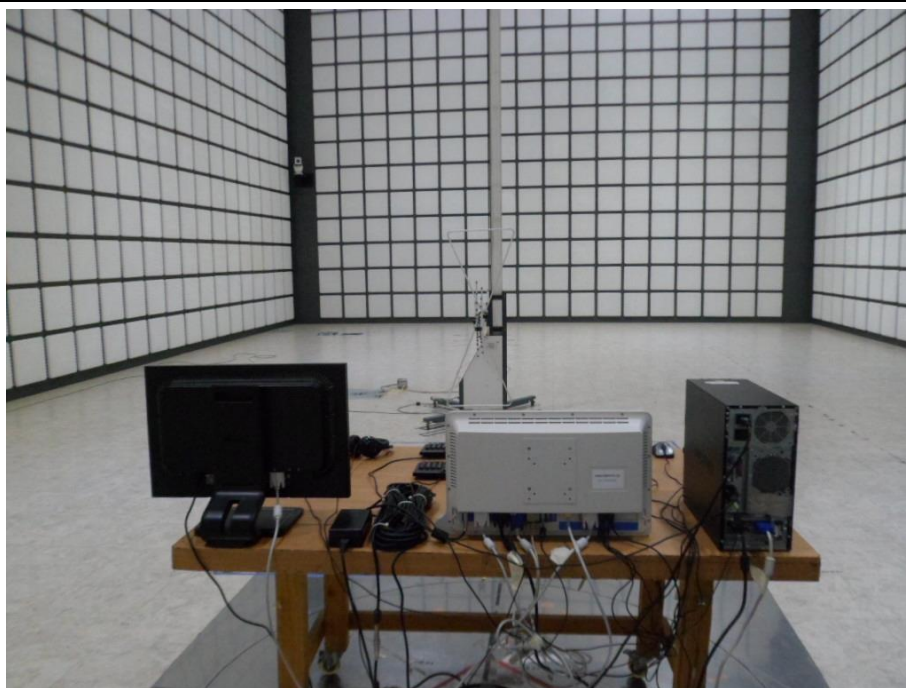
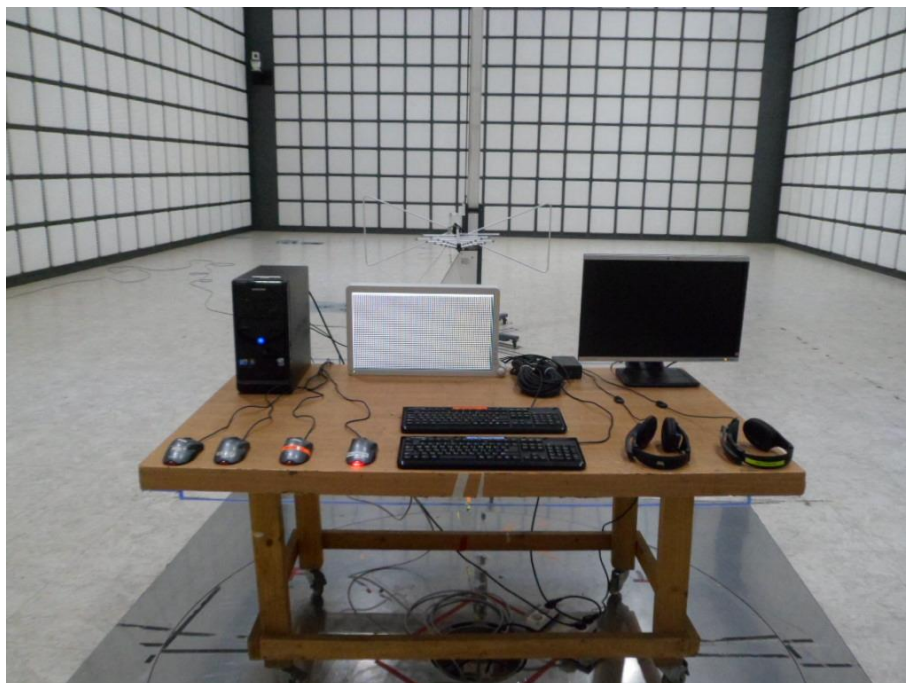


Figure 6. Radiated Emission Test Setup (1 ~ 6) GHz : VGA Mode

