



Dear Mr. Hong Suk Oh / UL Korea

RE: Comparison between before & after for AMM190WTD

Date: August 23, 2012

Please refer to attached page for before & after comparison of following model.

- LCD panel changed to LED panel
- Inverter change to "without inverter"
- Main board
- Sub board
- Power adapter

Model

AMM190WTD

AMM190WTD2 (multiple model name)

FCC ID

QVXAMM190WTD

Best regards,

A handwritten signature in black ink, appearing to be "Andy Jang", written in a cursive style.

Andy Jang / Regulatory Manager

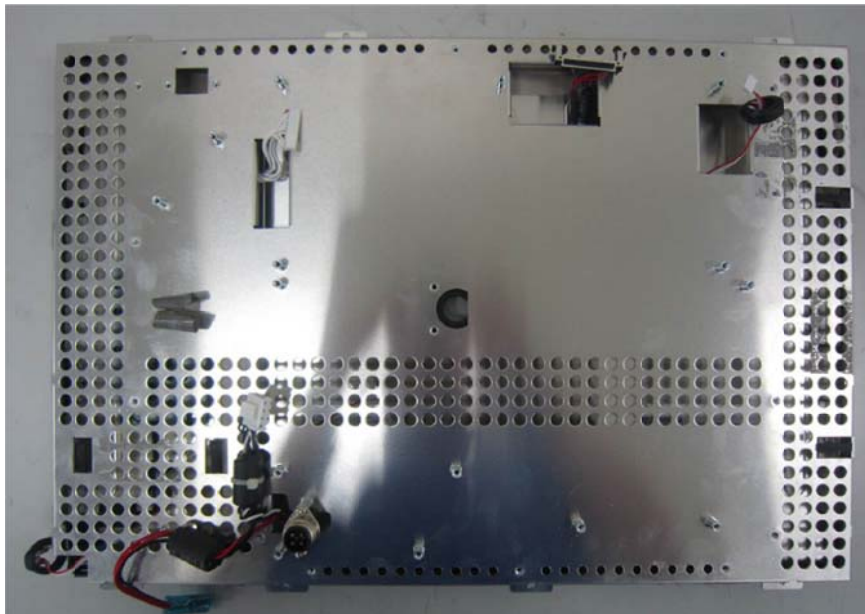
ADVAN INT'L CORP.

LCD Panel

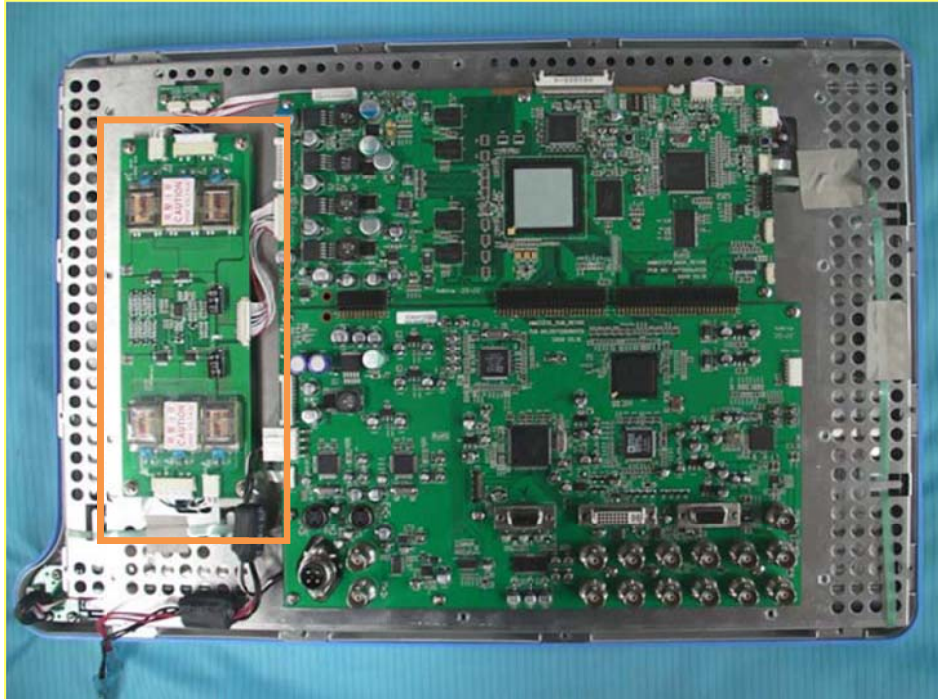
Before (LCD panel)



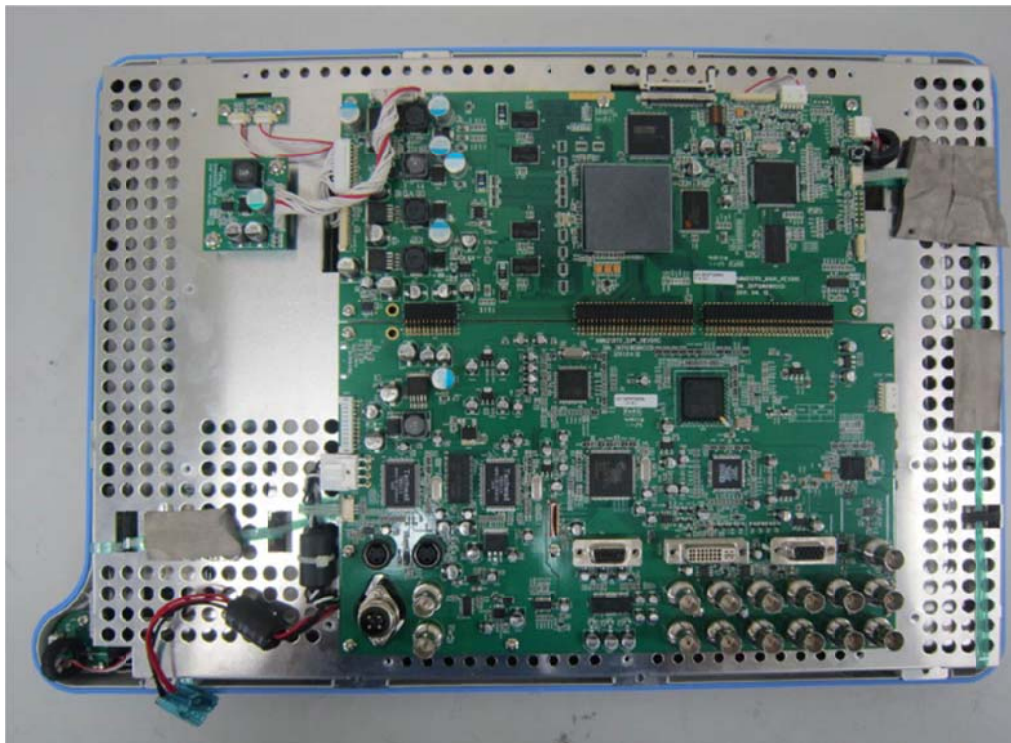
After (LED panel)



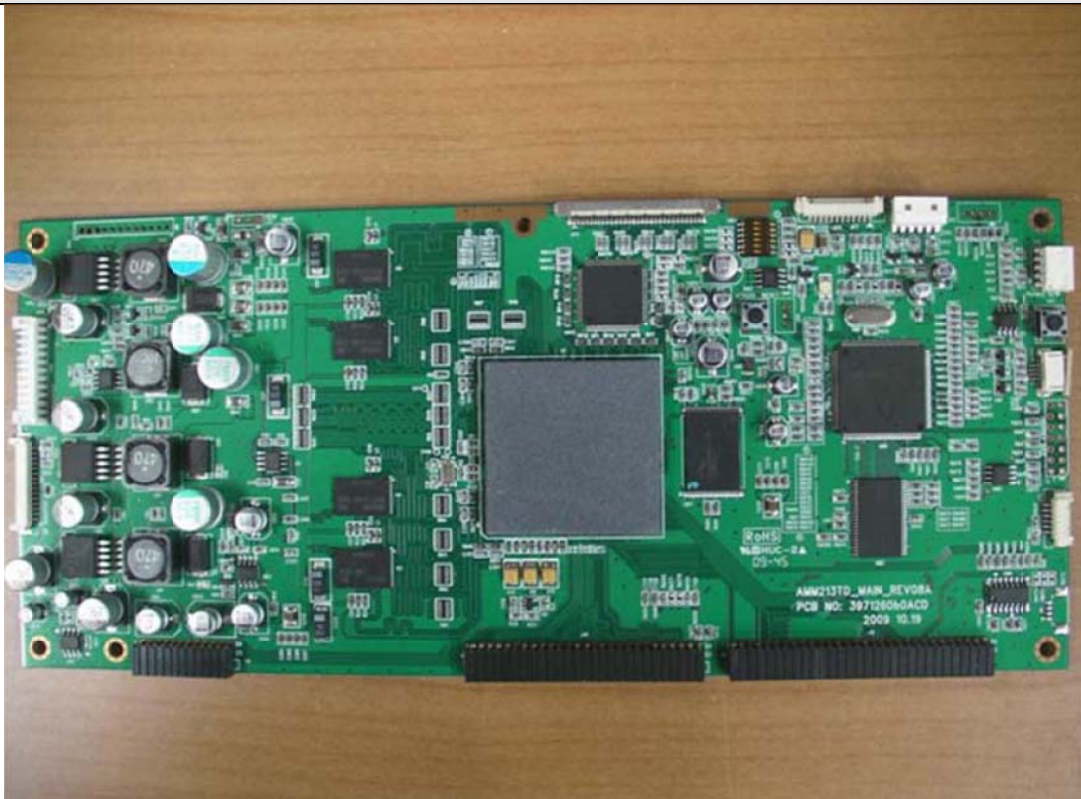
Before (with inverter)



After (without inverter)



Before (main board)



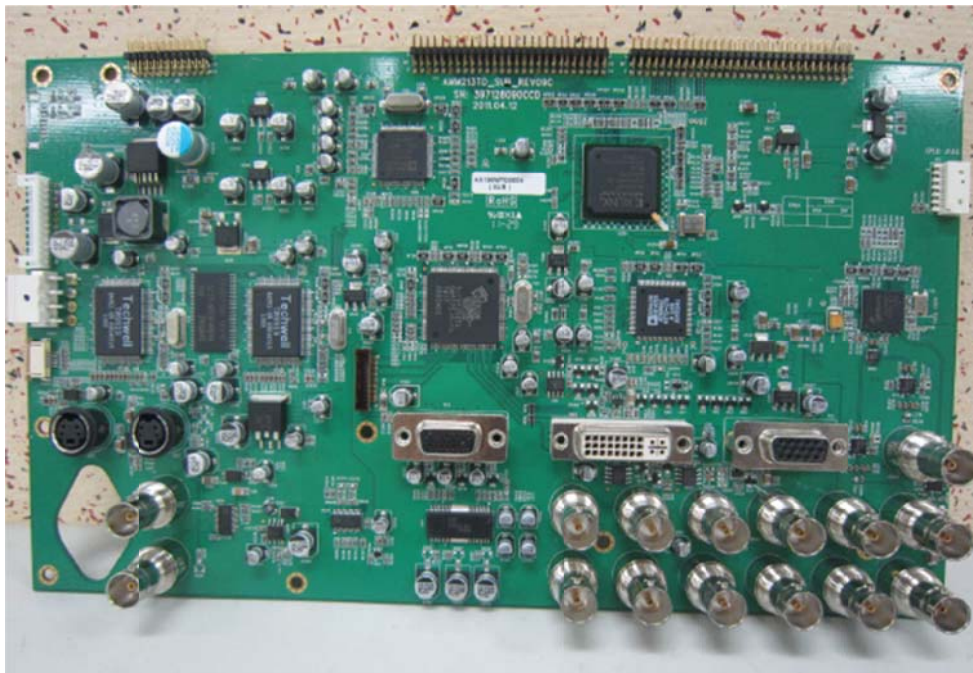
After (main board)



Before (sub board)



After (sub board)



Before (power adapter)



After (power adapter)

