

SAR Compliance Test Report

Test report no.:	FCC_RM-553_11	Date of report:	2010-09-14
Template version:	16.0	Number of pages:	31
Testing laboratory:	TCC Nokia Salo Laboratory P.O.Box 86 Joensuunkatu 7H / Kiila 1B FIN-24101 SALO, FINLAND Tel. +358 (0) 7180 08000 Fax. +358 (0) 7180 45220	Client:	Nokia Corporation P.O. Box 68 Sinitaival 5 FIN-33721 TAMPERE, FINLAND Tel. +358 (0) 7180 08000 Fax. +358 (0) 7180 46880
Responsible test engineer:	Janne Hirsimäki	Product contact person:	Sarna Janne
Measurements made by:	Virpi Tuominen		
Tested device:	RM-553		
FCC ID:	QVVRM-553	IC:	661AE-RM553
Supplement reports:	SAR_Photo_RM-553_12, FCC_RM-553_07, FCC_RM-553_01, FCC_RM-555_11 for RM-555 / FCC ID: QVVRM-555 / IC: 661AE-RM555		
Testing has been carried out in accordance with:	47CFR §2.1093 Radiofrequency Radiation Exposure Evaluation: Portable Devices FCC OET Bulletin 65 (Edition 97-01), Supplement C (Edition 01-01) Evaluating Compliance with FCC Guidelines for Human Exposure to Radiofrequency Electromagnetic Fields RSS-102 Evaluation Procedure for Mobile and Portable Radio Transmitters with Respect to Health Canada's Safety Code 6 for Exposure of Humans to Radio Frequency Fields IEEE 1528 - 2003 IEEE Recommended Practice for Determining the Peak Spatial-Average Specific Absorption Rate (SAR) in the Human Head from Wireless Communications Devices: Measurement Technique		
Documentation:	The documentation of the testing performed on the tested devices is archived for 15 years at TCC Nokia.		
Test results:	The tested device complies with the requirements in respect of all parameters subject to the test. The test results and statements relate only to the items tested. The test report shall not be reproduced except in full, without written approval of the laboratory.		
Date and signatures:			
For the contents:			

CONTENTS

1. SUMMARY OF SAR TEST REPORT	3
1.1 TEST DETAILS	3
1.2 MAXIMUM RESULTS	3
1.2.1 Head Configuration	3
1.2.2 Body Worn Configuration	4
1.2.3 Maximum Drift	4
1.2.4 Measurement Uncertainty	4
2. DESCRIPTION OF THE DEVICE UNDER TEST	5
2.1 DESCRIPTION OF THE ANTENNA	5
3. TEST CONDITIONS	5
3.1 TEMPERATURE AND HUMIDITY	5
3.2 TEST SIGNAL, FREQUENCIES AND OUTPUT POWER	6
3.3 TEST CASES AND TEST MINIMISATION	6
4. DESCRIPTION OF THE TEST EQUIPMENT	9
4.1 MEASUREMENT SYSTEM AND COMPONENTS	9
4.1.1 Isotropic E-field Probe Type ET3DV6	10
4.2 PHANTOMS	10
4.3 TISSUE SIMULANTS	11
4.3.1 Tissue Simulant Recipes	11
4.3.2 System Checking	11
4.3.3 Tissue Simulants used in the Measurements	12
5. DESCRIPTION OF THE TEST PROCEDURE	12
5.1 DEVICE HOLDER	12
5.2 TEST POSITIONS	13
5.2.1 Against Phantom Head	13
5.2.2 Body Worn Configuration	13
5.3 SCAN PROCEDURES	14
5.4 SAR AVERAGING METHODS	14
6. MEASUREMENT UNCERTAINTY	15
7. RESULTS	16
APPENDIX A: SYSTEM CHECKING SCANS	21
APPENDIX B: MEASUREMENT SCANS	22
APPENDIX C: RELEVANT PAGES FROM PROBE CALIBRATION REPORT(S)	30
APPENDIX D: RELEVANT PAGES FROM DIPOLE VALIDATION KIT REPORT(S)	31

1. SUMMARY OF SAR TEST REPORT

1.1 Test Details

Period of test	2010-08-31
SN, HW and SW numbers of tested device	SN: 004402/13/166009/8, HW: 6670, SW: 11.2.102, DUT: 14955
Batteries used in testing	BL-4D, DUT: 14953, 14954, 14956
Headsets used in testing	-
Other accessories used in testing	-
State of sample	Prototype unit
Notes	-

1.2 Maximum Results

The maximum measured SAR values for Head configuration and Body Worn configuration are given in section 1.2.1 and 1.2.2 respectively. The device conforms to the requirements of the standard(s) when the maximum measured SAR value is less than or equal to the limit.

1.2.1 Head Configuration

Mode	Ch / f (MHz)	Conducted power	Position	Measured SAR value (1g avg)	Scaled* SAR value (1g avg)	SAR limit (1g avg)	Result
2-slot GPRS850**	251 / 848.8	32.5 dBm	Right, Cheek	0.526 W/kg	0.59 W/kg	1.6 W/kg	PASSED
WCDMA850	4233/846.6	23.3 dBm	Right, Cheek	0.277 W/kg	0.31 W/kg	1.6 W/kg	PASSED
3-slot GPRS1900**	512 / 1850.2	27.7 dBm	Left, Cheek	0.447 W/kg	0.50 W/kg	1.6 W/kg	PASSED
WCDMA1900***	9400 / 1880.0	23.3 dBm	Left, Cheek	0.492 W/kg	0.55 W/kg	1.6 W/kg	PASSED
WLAN2450**	1 / 2412.0	18.0 dBm	Left, Tilt	0.343 W/kg	0.38 W/kg	1.6 W/kg	PASSED
2-slot GPRS850 + WLAN2450**	-	-	Right, Cheek	0.554 W/kg	0.62 W/kg	1.6 W/kg	PASSED
WCDMA850 + WLAN2450	-	-	Right, Cheek	0.298 W/kg	0.33 W/kg	1.6 W/kg	PASSED
3-slot GPRS1900 + WLAN2450**	-	-	Left, Cheek	0.457 W/kg	0.51 W/kg	1.6 W/kg	PASSED
WCDMA1900 + WLAN2450	-	-	Left, Cheek	0.492 W/kg	0.55 W/kg	1.6 W/kg	PASSED

1.2.2 Body Worn Configuration

Mode	Ch / f (MHz)	Conducted power	Separation distance	Measured SAR value (1g avg)	Scaled* SAR value (1g avg)	SAR limit (1g avg)	Result
2-slot GPRS850**	251 / 848.8	32.5 dBm	1.5 cm	1.11 W/kg	1.24 W/kg	1.6 W/kg	PASSED
WCDMA850	4233/846.6	23.3 dBm	1.5 cm	0.571 W/kg	0.64 W/kg	1.6 W/kg	PASSED
3-slot GPRS1900**	661 / 1880.0	27.7 dBm	1.5 cm	0.677 W/kg	0.75 W/kg	1.6 W/kg	PASSED
WCDMA1900***	9400 / 1880.0	23.3 dBm	1.5 cm	0.593 W/kg	0.66 W/kg	1.6 W/kg	PASSED
WLAN2450**	11 / 2462.0	18.0 dBm	1.5 cm	0.168 W/kg	0.19 W/kg	1.6 W/kg	PASSED
2-slot GPRS850 + WLAN2450**	-	-	1.5 cm	1.13 W/kg	1.27 W/kg	1.6 W/kg	PASSED
WCDMA850 + WLAN2450	-	-	1.5 cm	0.587 W/kg	0.66 W/kg	1.6 W/kg	PASSED
3-slot GPRS1900 + WLAN2450**	-	-	1.5 cm	0.700 W/kg	0.78 W/kg	1.6 W/kg	PASSED
WCDMA1900 + WLAN2450	-	-	1.5 cm	0.612 W/kg	0.69 W/kg	1.6 W/kg	PASSED

* SAR values are scaled up by 12% to cover measurement drift. As a consequence of this upwards correction of the SAR values, the contribution of measurement drift to the overall measurement uncertainty (Section 6) is reduced to zero.

** SAR data taken from FCC_RM-553_06.

*** SAR data taken from FCC_RM-555_11 for RM-555 / FCC ID: QVVRM-555 / IC: 661AE-RM555.

1.2.3 Maximum Drift

Maximum drift covered by 12% scaling up of the SAR values	Maximum drift during measurements
0.5dB	0.48 dB

1.2.4 Measurement Uncertainty

Expanded Uncertainty (k=2) 95%	± 25.8%
--------------------------------	---------

2. DESCRIPTION OF THE DEVICE UNDER TEST

Device category	Portable
Exposure environment	General population / uncontrolled

Modes of Operation	Bands	Modulation Mode	Duty Cycle	Transmitter Frequency Range (MHz)
GSM	850 1900	GMSK	1/8	824 – 849 1850 – 1910
GPRS	850 1900	GMSK	1/8 to 3/8	824 – 849 1850 – 1910
EGPRS	850 1900	GMSK / 8PSK	1/8 to 3/8	824 – 849 1850 – 1910
WCDMA	850 (Band V) 1900 (Band II)		1	826 – 847 1852 – 1908
BT	2450	GFSK	1	2402 – 2480
WLAN b-mode	2450	Up to 11Mbps QPSK	1	2412 – 2462
WLAN g-mode	2450	Up to 54Mbps 64QAM	1	2412 – 2462

Outside of USA and Canada, the transmitter of the device is capable of operating also in GSM/GPRS/EGPRS900, GSM/GPRS/EGPRS1800 and WCDMA2100 bands which are not part of this filing.

2.1 Description of the Antenna

The device has internal antennas for both cellular and WLAN use. The cellular antenna is located at the bottom in the back section of the keypad slide. The WLAN antenna is located at the top in the back section of the keypad slide.

3. TEST CONDITIONS

3.1 Temperature and Humidity

Ambient temperature (°C):	20.5 to 20.8
Ambient humidity (RH %):	56 to 61

3.2 Test Signal, Frequencies and Output Power

The device was put into operation by using a call tester. Communication between the device and the call tester was established by air link.

The device output power was set to maximum power level for all tests; a fully charged battery was used for every test sequence.

The transmission mode of the device in all WCDMA tests was configured to 12.2kbps RMC with all TPC bits set as “1”.

In all operating bands the measurements were performed on lowest, middle and highest channels.

The radiated output power of the device was measured by a separate test laboratory on the same unit(s) as used for SAR testing. The results are given in the EMC report supporting this application.

The WCDMA1900 test results presented in this document have been taken from the earlier report FCC_RM-555_11 for RM-555 / FCC ID: QVVRM-555 / IC: 661AE_RM555; the only difference between RM-553 and RM-555 is that WCDMA900 capability in RM-555 has been replaced by WCDMA850 capability in RM-553. The GSM/GPRS and WLAN test results presented in this document have been taken from the earlier report FCC_RM-553_07. The number of WCDMA850 test cases reported has been minimised based on the earlier report FCC_RM-553_01.

3.3 Test Cases and Test Minimisation

The tested device examined in this report may not incorporate all of the features described in the text that follows, but its SAR evaluation will have been subjected to the same considerations and test logic described below.

Whilst it's possible to identify the maximum SAR test cases from inspection of the conducted power levels given in the Results tables (Section 7), different modes in the same band and multi-slot transmit GSM/GPRS modes can create some difficulties. Therefore the sequence of the SAR tests made in evaluating this device has used test logic that is based on measured SAR values. Comparison of measured SAR values in this way, can also allow some test minimization (i.e. test elimination) to be made.

For example, when SAR testing multi-slot GSM/GPRS/EGPRS modes, it is an inefficient use of test resources to fully SAR test every test configuration in each of the different modes as these modes have a fixed power relationship between them that is the same, irrespective of the test configuration. In the case of multi-slot GSM/GPRS modes, a single comparative SAR test - using

the same test channel and test configuration – is made in each of the n-slot modes; the mode with the highest measured SAR value is then subjected to full SAR testing in all test configurations. These comparative SAR tests (same frequency, same test configuration) are regarded as extremely accurate as they are relative tests in which the tested device changes neither its frequency nor its position between tests. For different modes that operate in the same band and use the same antenna e.g. GSM/GPRS850 and WCDMA850, full SAR testing is carried out in the GSM/GPRS850 mode but WCDMA850 testing is limited to 3 channel testing in the maximum SAR test configuration for GSM/GPRS850.

Multi-slot SAR testing against the Head is always performed whenever such a device offers Push to Talk over cellular with the internal earpiece active, Dual Transfer Mode (i.e. the ability to transmit voice and data simultaneously using the same transmitter) or has WLAN (which enables a Voice over IP call to take place whilst the device can simultaneously transmit data on a cellular band). Whenever a device has an intended multi-slot use against the head, it is also Head SAR tested in EGPRS mode. It should be noted that EGPRS transmit modes can have either GMSK or 8PSK modulation but, when tested, only 8PSK EGPRS will appear explicitly in the results tables, as GMSK EGPRS mode has identical time-averaged power to the reported GPRS mode.

Devices that have flips or slides are fully SAR tested in all device configurations consistent with their intended usage. For example, flip phones that can receive a call in closed mode are SAR tested against the head in both open and closed configurations. Similarly, slide phones are fully SAR tested in all slide configurations in which calls are intended to be made or received.

In the results tables in Section 7, the maximum SAR value for the ‘basic’ tests (i.e. left cheek, left tilt, right cheek and right tilt in Head SAR testing; with and without headset with the back &/or display side facing the flat phantom in Body SAR testing) is bolded for each band. In some cases, after full testing of the basic SAR test configurations has been completed, additional checking SAR tests are made. These checking tests are always based on the bolded result from the ‘basic’ testing. When the SAR value of a checking test exceeds the maximum value from the basic tests, it is also bolded and used as the basis for any further checking tests that might be needed.

Checking tests are largely voluntary and can cover optional batteries, different camera slide positions, optional covers, etc. In the case of optional batteries, if the construction of the optional battery is significantly different to the battery used in the full testing e.g. if the outer can is floating electrically rather than grounded, then the maximum SAR test configuration in each band is tested with the optional battery in 3 channels. For camera slides, if the slide material is metal, then checking tests in 3 channels are again run for the maximum SAR test configuration in each band. For plastic camera slides, SAR checking is only carried out in the channel that provided the maximum SAR value for the original. Optional front and back covers are tested if their shape differs significantly from the original or if their metallic content varies by more than 15% from the original; in the former case, the testing depends on the extent of

the physical differences, whereas in the latter case, 3 channel SAR testing is performed in every band in the max SAR test configuration.

4. DESCRIPTION OF THE TEST EQUIPMENT

4.1 Measurement System and Components

The measurements were performed using an automated near-field scanning system, DASY4, manufactured by Schmid & Partner Engineering AG (SPEAG) in Switzerland. The SAR extrapolation algorithm used in all measurements was the 'advanced extrapolation' algorithm.

The following table lists calibration dates of SPEAG components:

Test Equipment	Serial Number	Calibration interval	Calibration expiry
DAE4	1213	12 months	2010-11
E-field Probe ET3DV6	1395	12 months	2011-04
Dipole Validation Kit, D835V2	480	24 months	2011-10
DASY4 software	Version 4.7	-	-

Additional test equipment used in testing:

Test Equipment	Model	Serial Number	Calibration interval	Calibration expiry
Signal Generator	SML03	101265	12 months	2010-09
Amplifier	ZHL-42 (SMA)	N072095-5	12 months	2010-09
Power Meter	NRVS	849305/028	12 months	2010-09
Power Sensor	NRV-Z32	839176/020	12 months	2010-09
Call Tester	CMU 200	101111	-	-
Call Tester	CMU 200	104983	-	-
Vector Network Analyzer	8753E	US38432928	12 months	2010-09
Dielectric Probe Kit	85070B	US33020420	-	-

4.1.1 Isotropic E-field Probe Type ET3DV6

Construction	Symmetrical design with triangular core Built-in optical fiber for surface detection system Built-in shielding against static charges PEEK enclosure material (resistant to organic solvents, e.g., butyl diglycol)
Calibration	Calibration certificate in Appendix C
Frequency	10 MHz to 3 GHz (dosimetry); Linearity: ± 0.2 dB (30 MHz to 3 GHz)
Optical Surface Detection	± 0.2 mm repeatability in air and clear liquids over diffuse reflecting surfaces
Directivity	± 0.2 dB in HSL (rotation around probe axis) ± 0.4 dB in HSL (rotation normal to probe axis)
Dynamic Range	5 μ W/g to > 100 mW/g; Linearity: ± 0.2 dB
Dimensions	Overall length: 330 mm Tip length: 16 mm Body diameter: 12 mm Tip diameter: 6.8 mm Distance from probe tip to dipole centers: 2.7 mm
Application	General dosimetry up to 3 GHz Compliance tests of mobile phones Fast automatic scanning in arbitrary phantoms

4.2 Phantoms

The phantom used for all tests i.e. for both system checks and device testing, was the twin-headed "SAM Phantom", manufactured by SPEAG. The phantom conforms to the requirements of IEEE 1528 - 2003.

System checking was performed using the flat section, whilst Head SAR tests used the left and right head profile sections. Body SAR testing also used the flat section between the head profiles.

The SPEAG device holder (see Section 5.1) was used to position the device in all tests whilst a tripod was used to position the validation dipoles against the flat section of phantom.

4.3 Tissue Simulants

Recommended values for the dielectric parameters of the tissue simulants are given in IEEE 1528 - 2003 and FCC Supplement C to OET Bulletin 65. All tests were carried out using simulants whose dielectric parameters were within $\pm 5\%$ of the recommended values. All tests were carried out within 24 hours of measuring the dielectric parameters.

The depth of the tissue simulant was at least 15.0 cm measured from the ear reference point during system checking and device measurements.

4.3.1 Tissue Simulant Recipes

The following recipe(s) were used for Head and Body tissue simulant(s):

800MHz band		
Ingredient	Head (% by weight)	Body (% by weight)
Deionised Water	51.50	69.25
Tween 20	47.35	30.00
Salt	1.15	0.75

4.3.2 System Checking

The manufacturer calibrates the probes annually. Dielectric parameters of the tissue simulants were measured every day using the dielectric probe kit and the network analyser. A system check measurement was made following the determination of the dielectric parameters of the simulant, using the dipole validation kit. A power level of 250 mW was supplied to the dipole antenna, which was placed under the flat section of the twin SAM phantom. The system checking results (dielectric parameters and SAR values) are given in the table below.

System checking, head tissue simulant

f [MHz]	Description	SAR [W/kg], 1g	Dielectric Parameters		Temp [°C]
			ϵ_r	σ [S/m]	
835	Reference result	2.36	40.5	0.88	21.0
	$\pm 10\%$ window	2.12 – 2.60			
	2010-08-31	2.39	41.4	0.90	

Plots of the system checking scans are given in Appendix A.

4.3.3 Tissue Simulants used in the Measurements

Head tissue simulant measurements

f [MHz]	Description	Dielectric Parameters		Temp [°C]
		ϵ_r	σ [S/m]	
835	Recommended value	41.5	0.90	21.0
	$\pm 5\%$ window	39.4 – 43.6	0.86 – 0.95	
	2010-08-31	41.4	0.90	

Body tissue simulant measurements

f [MHz]	Description	Dielectric Parameters		Temp [°C]
		ϵ_r	σ [S/m]	
835	Recommended value	55.2	0.97	21.0
	$\pm 5\%$ window	52.4 – 58.0	0.92 – 1.02	
	2010-08-31	54.3	1.00	

5. DESCRIPTION OF THE TEST PROCEDURE

5.1 Device Holder

The device was placed in the device holder (illustrated below) that is supplied by SPEAG as an integral part of the Dasy system.



Device holder supplied by SPEAG

A Nokia designed spacer (illustrated below) was used to position the device within the SPEAG holder. The spacer positions the device so that the holder has minimal effect on the test results but still holds the device securely. The spacer was removed before the tests.



Nokia spacer

5.2 Test Positions

5.2.1 Against Phantom Head

Measurements were made in “cheek” position on the right hand side of the phantom.

The positions used in the measurements were according to IEEE 1528 - 2003 "IEEE Recommended Practice for Determining the Peak Spatial-Average Specific Absorption Rate (SAR) in the Human Head from Wireless Communications Devices: Measurement Techniques".

5.2.2 Body Worn Configuration

The device was placed in the SPEAG holder using the Nokia spacer and placed below the flat section of the phantom. The distance between the device and the phantom was kept at the separation distance indicated in Section 1.2.2 using a separate flat spacer that was removed before the start of the measurements.

5.3 Scan Procedures

First, area scans were used for determination of the field distribution. Next, a zoom scan, a minimum of 5x5x7 points covering a volume of at least 30x30x30mm, was performed around the highest E-field value to determine the averaged SAR value. Drift was determined by measuring the same point at the start of the area scan and again at the end of the zoom scan.

5.4 SAR Averaging Methods

The maximum SAR value was averaged over a cube of tissue using interpolation and extrapolation.

The interpolation, extrapolation and maximum search routines within Dasy4 are all based on the modified Quadratic Shepard's method (Robert J. Renka, "Multivariate Interpolation Of Large Sets Of Scattered Data", University of North Texas ACM Transactions on Mathematical Software, vol. 14, no. 2, June 1988, pp. 139-148).

The interpolation scheme combines a least-square fitted function method with a weighted average method. A trivariate 3-D / bivariate 2-D quadratic function is computed for each measurement point and fitted to neighbouring points by a least-square method. For the zoom scan, inverse distance weighting is incorporated to fit distant points more accurately. The interpolating function is finally calculated as a weighted average of the quadratics.

In the zoom scan, the interpolation function is used to extrapolate the Peak SAR from the deepest measurement points to the inner surface of the phantom.

6. MEASUREMENT UNCERTAINTY

Table 6.1 – Measurement uncertainty evaluation

Uncertainty Component	Section in IEEE 1528	Tol. (%)	Prob Dist	Div	C_i	$C_i \cdot U_i$ (%)	V_i
Measurement System							
Probe Calibration	E2.1	±5.9	N	1	1	±5.9	∞
Axial Isotropy	E2.2	±4.7	R	√3	$(1-c_p)^{1/2}$	±1.9	∞
Hemispherical Isotropy	E2.2	±9.6	R	√3	$(c_p)^{1/2}$	±3.9	∞
Boundary Effect	E2.3	±1.0	R	√3	1	±0.6	∞
Linearity	E2.4	±4.7	R	√3	1	±2.7	∞
System Detection Limits	E2.5	±1.0	R	√3	1	±0.6	∞
Readout Electronics	E2.6	±1.0	N	1	1	±1.0	∞
Response Time	E2.7	±0.8	R	√3	1	±0.5	∞
Integration Time	E2.8	±2.6	R	√3	1	±1.5	∞
RF Ambient Conditions - Noise	E6.1	±3.0	R	√3	1	±1.7	∞
RF Ambient Conditions - Reflections	E6.1	±3.0	R	√3	1	±1.7	∞
Probe Positioner Mechanical Tolerance	E6.2	±0.4	R	√3	1	±0.2	∞
Probe Positioning with respect to Phantom Shell	E6.3	±2.9	R	√3	1	±1.7	∞
Extrapolation, interpolation and Integration Algorithms for Max. SAR Evaluation	E5	±3.9	R	√3	1	±2.3	∞
Test sample Related							
Test Sample Positioning	E4.2	±6.0	N	1	1	±6.0	11
Device Holder Uncertainty	E4.1	±5.0	N	1	1	±5.0	7
Output Power Variation - SAR drift measurement	6.6.3	±0.0	R	√3	1	±0.0	∞
Phantom and Tissue Parameters							
Phantom Uncertainty (shape and thickness tolerances)	E3.1	±4.0	R	√3	1	±2.3	∞
Conductivity Target - tolerance	E3.2	±5.0	R	√3	0.64	±1.8	∞
Conductivity - measurement uncertainty	E3.3	±5.5	N	1	0.64	±3.5	5
Permittivity Target - tolerance	E3.2	±5.0	R	√3	0.6	±1.7	∞
Permittivity - measurement uncertainty	E3.3	±2.9	N	1	0.6	±1.7	5
Combined Standard Uncertainty			RSS			±12.9	116
Coverage Factor for 95%			k=2				
Expanded Uncertainty						±25.8	

7. RESULTS

The measured Head SAR values for the test device are tabulated below:

850MHz Head SAR results

Option used	Test configuration		SAR, averaged over 1g (W/kg)		
			Ch 128 824.2 MHz	Ch 190 836.6 MHz	Ch 251 848.8 MHz
2-slot GPRS**	Conducted Power		32.5 dBm	32.5 dBm	32.5 dBm
Slide closed	Left	Cheek	-	-	-
		Tilt	-	-	-
	Right	Cheek	0.379	0.484	0.526
		Tilt	-	-	-
Option used	Test configuration		SAR, averaged over 1g (W/kg)		
			Ch 4132 826.4 MHz	Ch 4175 835.0 MHz	Ch 4233 846.6 MHz
WCDMA	Conducted Power		23.3 dBm	23.3 dBm	23.3 dBm
Slide closed	Left	Cheek	-	-	-
		Tilt	-	-	-
	Right	Cheek	0.217	0.250	0.277
		Tilt	-	-	-

1900MHz Head SAR results

Mode	Test configuration		SAR, averaged over 1g (W/kg)		
			Ch 512 1850.2 MHz	Ch 661 1880.0 MHz	Ch 810 1909.8 MHz
3-slot GPRS**	Conducted Power		27.7 dBm	27.7 dBm	27.7 dBm
Slide Closed	Left	Cheek	0.447	0.412	0.418
		Tilt	-	-	-
	Right	Cheek	-	-	-
		Tilt	-	-	-
Mode	Test configuration		SAR, averaged over 1g (W/kg)		
			Ch 9262 1852.4 MHz	Ch 9400 1880.0 MHz	Ch 9538 1907.6 MHz
WCDMA***	Conducted Power		23.3 dBm	23.3 dBm	23.3 dBm
Slide Closed	Left	Cheek	0.364	0.492	0.322
		Tilt	-	-	-
	Right	Cheek	-	-	-
		Tilt	-	-	-

2450MHz Head SAR results**

Mode	Test configuration		SAR, averaged over 1g (W/kg)		
			Ch 1 2412.0 MHz	Ch 7 2442.0 MHz	Ch 11 2462.0 MHz
WLAN	Conducted Power		18.0 dBm	18.0 dBm	18.0 dBm
Slide Closed	Left	Cheek	-	0.209	-
		Tilt	0.343	0.301	0.204
	Right	Cheek	-	0.187	-
		Tilt	-	0.205	-

The measured Body SAR values for the test device are tabulated below:

850MHz Body SAR results

Option used	Device orientation	Test configuration	SAR, averaged over 1g (W/kg)		
			Ch 128 824.2 MHz	Ch 190 836.6 MHz	Ch 251 848.8 MHz
2-slot GPRS**		Conducted Power	32.5 dBm	32.5 dBm	32.5 dBm
Slide closed	Display facing phantom	Without headset	-	-	-
		Headset WH-701	-	-	-
	Back facing phantom	Without headset	0.868	0.995	1.11
		Headset WH-701	-	-	-
Option used	Device orientation	Test configuration	SAR, averaged over 1g (W/kg)		
			Ch 4132 826.4 MHz	Ch 4175 835.0 MHz	Ch 4233 846.6 MHz
WCDMA		Conducted Power	23.3 dBm	23.3 dBm	23.3 dBm
Slide closed	Display facing	Without headset	-	-	-
	phantom	Headset WH-701	-	-	-
	Back facing	Without headset	0.472	0.495	0.571
	phantom	Headset WH-701	-	-	-

1900MHz Body SAR results

Mode	Device orientation	Test configuration	SAR, averaged over 1g (W/kg)		
			Ch 512 1850.2 MHz	Ch 661 1880.0 MHz	Ch 810 1909.8 MHz
3-slot GPRS**		Conducted Power	27.7 dBm	27.7 dBm	27.7 dBm
Slide Closed	Display facing phantom	Without headset	-	-	-
		Headset WH-701	-	-	-
	Back facing phantom	Without headset	0.638	0.677	0.658
		Headset WH-701	-	-	-
Mode	Device orientation	Test configuration	SAR, averaged over 1g (W/kg)		
			Ch 9262 1852.4 MHz	Ch 9400 1880.0 MHz	Ch 9538 1907.6 MHz
WCDMA***		Conducted Power	23.3 dBm	23.3 dBm	23.3 dBm
Slide Closed	Display facing phantom	Without headset	-	-	-
		Headset WH-701	-	-	-
	Back facing phantom	Without headset	0.479	0.593	0.435
		Headset WH-701	-	-	-

2450MHz Body SAR results**

Mode	Device orientation	Test configuration	SAR, averaged over 1g (W/kg)		
			Ch 1 2412.0 MHz	Ch 7 2442.0 MHz	Ch 11 2462.0 MHz
WLAN		Conducted Power	18.0 dBm	18.0 dBm	18.0 dBm
Slide Closed	Display facing phantom	Without headset	-	-	-
		Headset WH-701	-	-	-
	Back facing phantom	Without headset	-	0.130	-
		Headset WH-701	0.131	0.141	0.168

Simultaneous transmissions: Combined SAR results – Individual band Max results

Test configuration	Max. 1g SAR results				
	WLAN**	2-slot GPRS850**	WCDMA850	3-slot GPRS1900**	WCDMA1900***
Head: Left, Cheek	0.209	-	-	0.447	0.492
Head: Left, Tilt	0.343	-	-	-	-
Head: Right, Cheek	0.187	0.526	0.277	-	-
Head: Right, Tilt	0.205	-	-	-	-
Body: Without Headset	0.130	1.11	0.571	0.677	0.593
Body: Headset WH-701	0.168	-	-	-	-

Simultaneous transmissions: Combined SAR results – Max + Max combined results

Test configuration	Combined 1g SAR values			
	2-slot GPRS850 + WLAN**	WCDMA850 + WLAN	3-slot GPRS1900 + WLAN**	WCDMA1900 + WLAN
Head: Left, Cheek	-	-	0.656	0.701
Head: Left, Tilt	-	-	-	-
Head: Right, Cheek	0.713	0.464	-	-
Head: Right, Tilt	-	-	-	-
Body: Without Headset	1.240	0.701	0.807	0.723
Body: Headset WH-701	-	-	-	-

The following table gives a more accurate assessment of the SAR values for simultaneous transmission. These values have been calculated using the SPEAG Combined Multiband algorithm, which is based on area scans. It a) converts the 2D area scans into 3D volume scans by assuming frequency-dependent decay characteristics for the E-field, b) sums the SAR values for WLAN2450 and the cellular bands point-by-point and c) calculates the combined average SAR values.

**Simultaneous transmissions: Combined SAR results –
SPEAG Combined Multiband algorithm results**

Test configuration	Combined 1g SAR values			
	2-slot GPRS850 + WLAN**	WCDMA850 + WLAN	3-slot GPRS1900 + WLAN**	WCDMA1900 + WLAN
Head: Left, Cheek	-	-	0.457	0.473
Head: Left, Tilt	-	-	-	-
Head: Right, Cheek	0.554	0.298	-	-
Head: Right, Tilt	-	-	-	-
Body: Without Headset	1.13	0.587	0.700	0.612
Body: Headset WH-701	-	-	-	-

**SAR data taken from FCC_RM-553_07.

*** SAR data taken from FCC_RM-555_11 for RM-555 / FCC ID: QVVRM-555 / IC: 661AE-RM555.

Some of the Combined SAR values in the above table are less than the maximum SAR values for the contributing cellular band. This is due to a) minimal overlap of the SAR distributions of the cellular band with WLAN2450 and b) uncertainties associated with the different methods of calculation. In these cases, the maximum SAR values given for the combined Modes in the Summary table in Section 1.2 are those for the individual cellular band.

Note: Simultaneous Transmission Procedures as described in KDB648474 are not required for this product. The Combined SAR data given in the tables above has been voluntarily calculated.

Plots of the Measurement scans are given in Appendix B.

APPENDIX A: SYSTEM CHECKING SCANS

Date/Time: 2010-08-31 10:20:55

Test Laboratory: TCC Nokia

Type: D835V2; Serial: D835V2 - SN:480

Communication System: CW835

Frequency: 835 MHz; Duty Cycle: 1:1

Medium: HSL850; Medium Notes: t= 20.0 C

Medium parameters used: f = 835 MHz; σ = 0.897 mho/m; ϵ_r = 41.4; ρ = 1000 kg/m³

Phantom section: Flat Section

DASY4 Configuration:

- Probe: ET3DV6 - SN1395
- ConvF(5.87, 5.87, 5.87); Calibrated: 2010-04-22
- Sensor-Surface: 4mm (Mechanical Surface Detection)
- Electronics: DAE4 Sn1213; Calibrated: 2009-11-16
- Phantom: SAM 3; Type: Twin SAM 040 CA; Serial: TP-1179
- Measurement SW: DASY4, V4.7 Build 55; Postprocessing SW: SEMCAD, V1.8 Build 176

d=15mm, Pin=250mW/Area Scan (61x81x1): Measurement grid: dx=15mm, dy=15mm

Maximum value of SAR (interpolated) = 2.53 mW/g

d=15mm, Pin=250mW/Zoom Scan (7x7x7)/Cube 0: Measurement grid: dx=5mm, dy=5mm, dz=5mm

Reference Value = 54.5 V/m

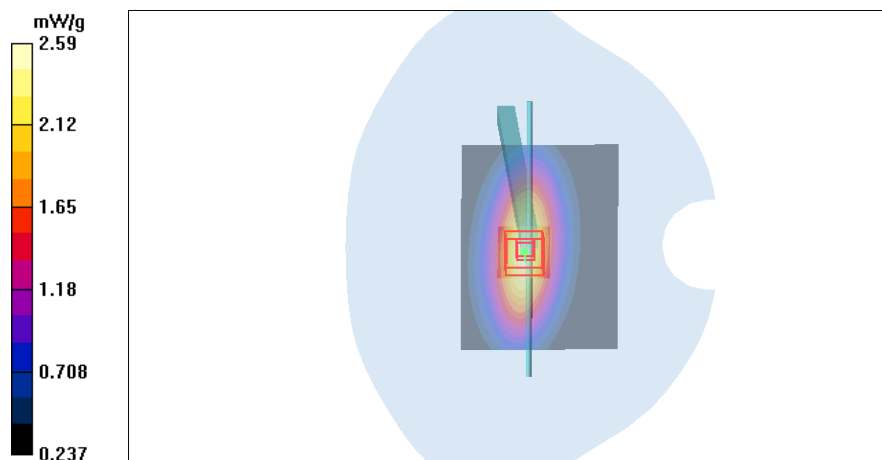
Peak SAR (extrapolated) = 3.52 W/kg

SAR(1 g) = 2.39 mW/g

SAR(10 g) = 1.56 mW/g

Power Drift = 0.079 dB

Maximum value of SAR (measured) = 2.59 mW/g



APPENDIX B: MEASUREMENT SCANS

Date/Time: 2010-08-31 12:29:11

Test Laboratory: TCC Nokia

Type: RM-553; Serial: 004402/13/166009/8

Communication System: WCDMA850

Frequency: 846.6 MHz; Duty Cycle: 1:1

Medium: HSL850; Medium Notes: 19.8 C

Medium parameters used: $f = 847$ MHz; $\sigma = 0.906$ mho/m; $\epsilon_r = 41.3$; $\rho = 1000$ kg/m³

Phantom section: Right Section

DASY4 Configuration:

- Probe: ET3DV6 - SN1395
- ConvF(5.87, 5.87, 5.87); Calibrated: 2010-04-22
- Sensor-Surface: 4mm (Mechanical Surface Detection (Locations From Previous Scan Used))Sensor-Surface: 4mm (Mechanical Surface Detection)
- Electronics: DAE4 Sn1213; Calibrated: 2009-11-16
- Phantom: SAM 3; Type: Twin SAM 040 CA; Serial: TP-1179
- Measurement SW: DASY4, V4.7 Build 55; Postprocessing SW: SEMCAD, V1.8 Build 176

Cheek – High – Slide closed/Area Scan (51x91x1): Measurement grid: dx=15mm, dy=15mm

Maximum value of SAR (interpolated) = 0.304 mW/g

Cheek – High – Slide closed/Zoom Scan (5x5x7)/Cube 0: Measurement grid: dx=7.5mm, dy=7.5mm, dz=5mm

Reference Value = 6.83 V/m

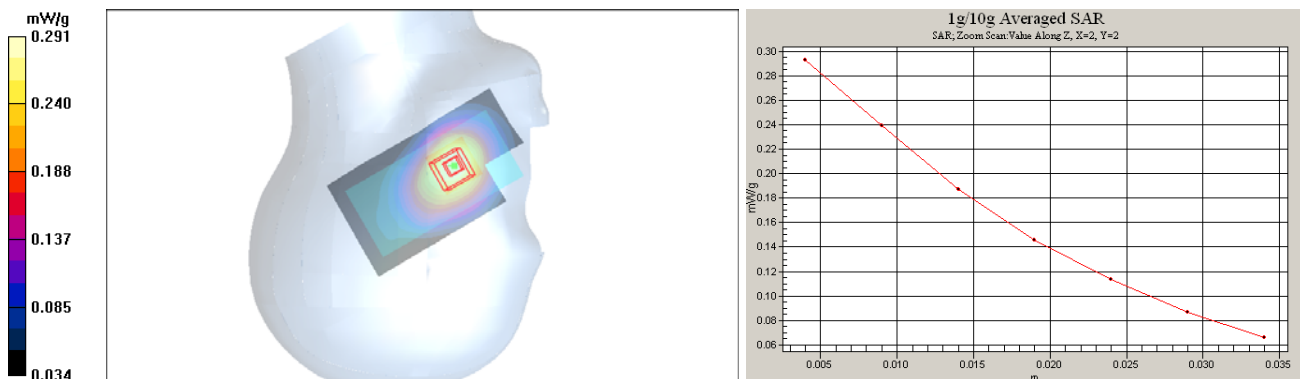
Peak SAR (extrapolated) = 0.337 W/kg

SAR(1 g) = 0.277 mW/g

SAR(10 g) = 0.207 mW/g

Power Drift = -0.200 dB

Maximum value of SAR (measured) = 0.291 mW/g



Date/Time: 2010-07-05 10:21:40

Test Laboratory: TCC Nokia

Type: RM-555; Serial: 351979/04/609680/6

Communication System: WCDMA1900

Frequency: 1880 MHz; Duty Cycle: 1:1

Medium: HSL1900; Medium Notes: t= 20.9 C

Medium parameters used: f = 1880 MHz; $\sigma = 1.36$ mho/m; $\epsilon_r = 39.5$; $\rho = 1000$ kg/m³

Phantom section: Left Section

DASY4 Configuration:

- Probe: ES3DV3 - SN3194
- ConvF(5.06, 5.06, 5.06); Calibrated: 2009-11-20
- Sensor-Surface: 4mm (Mechanical Surface Detection)
- Electronics: DAE4 Sn728; Calibrated: 2010-03-19
- Phantom: SAM 1; Type: Twin SAM 040 CA; Serial: TP-1449
- Measurement SW: DASY4, V4.7 Build 55; Postprocessing SW: SEMCAD, V1.8 Build 176

Cheek - Middle - Slide closed/Area Scan (51x91x1): Measurement grid: dx=15mm, dy=15mm

Maximum value of SAR (interpolated) = 0.507 mW/g

Cheek - Middle - Slide closed/Zoom Scan (5x5x7)/Cube 0: Measurement grid: dx=7.5mm, dy=7.5mm, dz=5mm

Reference Value = 8.72 V/m

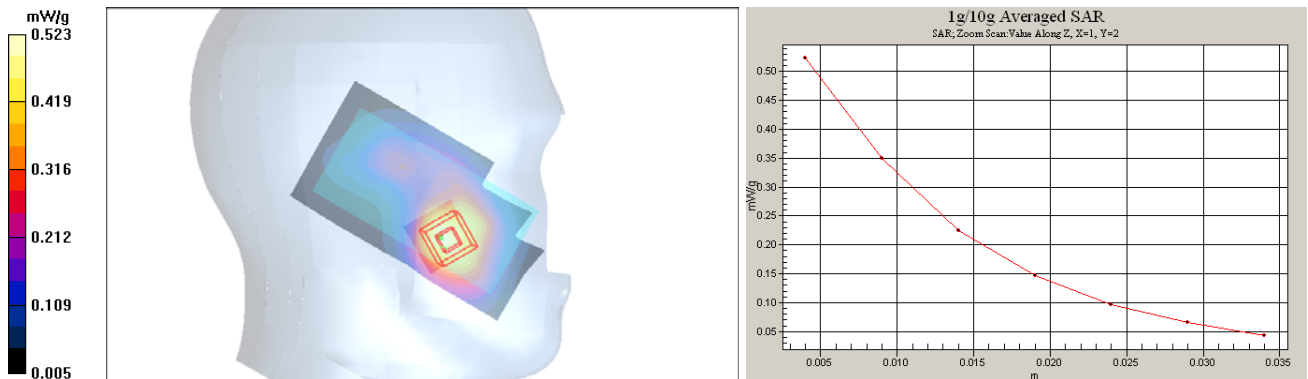
Peak SAR (extrapolated) = 0.708 W/kg

SAR(1 g) = 0.492 mW/g

SAR(10 g) = 0.315 mW/g

Power Drift = -0.334 dB

Maximum value of SAR (measured) = 0.523 mW/g



SAR Report

FCC_RM-553_11

Applicant: Nokia Corporation

Type: RM-553

Copyright © 2010 TCC Nokia

Date/Time: 2010-08-31 14:02:49

Test Laboratory: TCC Nokia
Type: RM-553; Serial: 004402/13/166009/8

Communication System: WCDMA850

Frequency: 846.6 MHz; Duty Cycle: 1:1

Medium: BSL850; Medium Notes: 20.1 C

Medium parameters used: $f = 847$ MHz; $\sigma = 1.01$ mho/m; $\epsilon_r = 54.2$; $\rho = 1000$ kg/m³

Phantom section: Flat Section

DASY4 Configuration:

- Probe: ET3DV6 - SN1395
- ConvF(5.76, 5.76, 5.76); Calibrated: 2010-04-22
- Sensor-Surface: 4mm (Mechanical Surface Detection)
- Electronics: DAE4 Sn1213; Calibrated: 2009-11-16
- Phantom: SAM 1; Type: Twin SAM 040 CA; Serial: TP-1179
- Measurement SW: DASY4, V4.7 Build 55; Postprocessing SW: SEMCAD, V1.8 Build 176

Body - High - Slide closed - No Accessory - Back Facing Phantom/Area Scan (51x91x1): Measurement grid:
dx=15mm, dy=15mm

Maximum value of SAR (interpolated) = 0.596 mW/g

Body - High - Slide closed - No Accessory - Back Facing Phantom/Zoom Scan (5x5x7)/Cube 0: Measurement grid: dx=7.5mm, dy=7.5mm, dz=5mm

Reference Value = 11.5 V/m

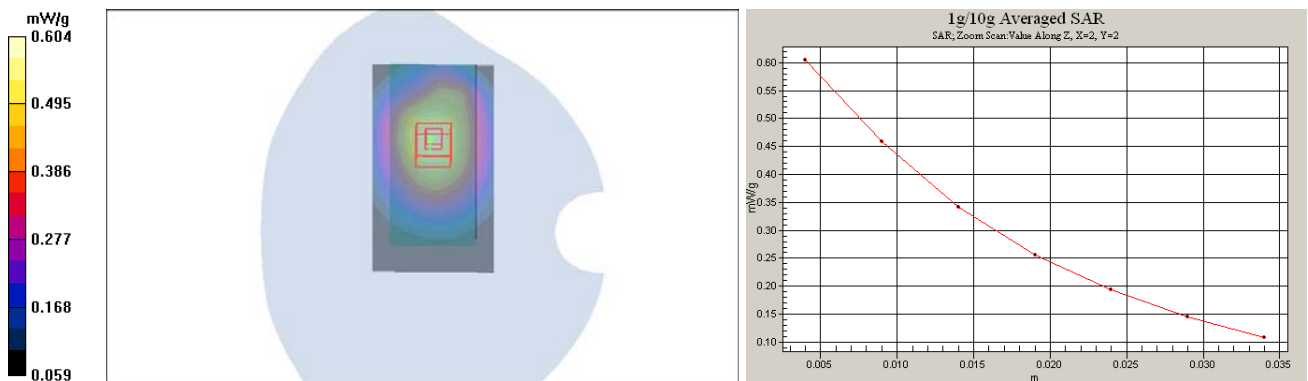
Peak SAR (extrapolated) = 0.735 W/kg

SAR(1 g) = 0.571 mW/g

SAR(10 g) = 0.416 mW/g

Power Drift = -0.026 dB

Maximum value of SAR (measured) = 0.604 mW/g



Date/Time: 2010-07-05 13:33:36

Test Laboratory: TCC Nokia
Type: RM-555; Serial: 351979/04/609680/6

Communication System: WCDMA1900

Frequency: 1880 MHz; Duty Cycle: 1:1

Medium: BSL1900; Medium Notes: t=20.8 C

Medium parameters used: f = 1880 MHz; $\sigma = 1.49$ mho/m; $\epsilon_r = 52.8$; $\rho = 1000$ kg/m³

Phantom section: Flat Section

DASY4 Configuration:

- Probe: ES3DV3 - SN3194
- ConvF(4.67, 4.67, 4.67); Calibrated: 2009-11-20
- Sensor-Surface: 4mm (Mechanical Surface Detection)
- Electronics: DAE4 Sn728; Calibrated: 2010-03-19
- Phantom: SAM 2; Type: Twin SAM 040 CA; Serial: TP - 1177
- Measurement SW: DASY4, V4.7 Build 55; Postprocessing SW: SEMCAD, V1.8 Build 176

Body - Middle - Slide Closed - No Accessory - Back Facing Phantom/Area Scan (51x91x1): Measurement grid:
dx=15mm, dy=15mm

Maximum value of SAR (interpolated) = 0.650 mW/g

Body - Middle - Slide Closed - No Accessory - Back Facing Phantom/Zoom Scan (5x5x7)/Cube 0: Measurement grid: dx=7.5mm, dy=7.5mm, dz=5mm

Reference Value = 12.2 V/m

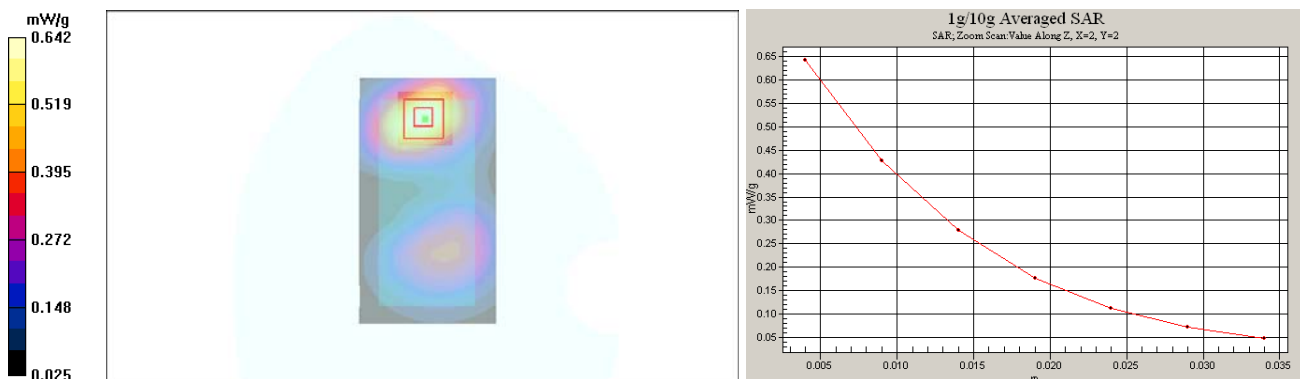
Peak SAR (extrapolated) = 0.886 W/kg

SAR(1 g) = 0.593 mW/g

SAR(10 g) = 0.369 mW/g

Power Drift = -0.117 dB

Maximum value of SAR (measured) = 0.642 mW/g



Date/Time: 2010-08-31 12:29:11, Date/Time: 2009-07-14 12:26:38

Test Laboratory: TCC Nokia

Type: RM-553, Type: RM-555; Serial: 004402/13/166009/8, Serial: 004401/10/682560/3

Communication System: WCDMA850, Communication System: WLAN2450

Frequency: 846.6 MHz, Frequency: 2442 MHz; Duty Cycle: 1:1

Medium: HSL850, Medium: Head 2450; Medium Notes: 19.8 C, Medium Notes: Medium Temperature: 21.5 C

Medium parameters used: $f = 847 \text{ MHz}$; $\sigma = 0.906 \text{ mho/m}$; $\epsilon_r = 41.3$; $\rho = 1000 \text{ kg/m}^3$, Medium parameters used:
 $f = 2442 \text{ MHz}$; $\sigma = 1.88 \text{ mho/m}$; $\epsilon_r = 37.6$; $\rho = 1000 \text{ kg/m}^3$

Phantom section: Right Section

DASY4 Configuration:

- Probe: ET3DV6 - SN1395, Probe: ES3DV3 - SN3119
- ConvF(5.87, 5.87, 5.87), ConvF(4.44, 4.44, 4.44); Calibrated: 2010-04-22, Calibrated: 2008-09-23
- Sensor-Surface: 4mm (Mechanical Surface Detection (Locations From Previous Scan Used)), Sensor-Surface: 4mm (Mechanical Surface Detection)
- Electronics: DAE4 Sn1213, Electronics: DAE4 Sn710; Calibrated: 2009-11-16, Calibrated: 2008-09-23
- Phantom: SAM 3, Phantom: SAM 8; Type: Twin SAM 040 CA, Type: SAM Twin Phantom; Serial: TP-1179, Serial: TP-1408
- ; SEMCAD X Version 14.0 Build 61

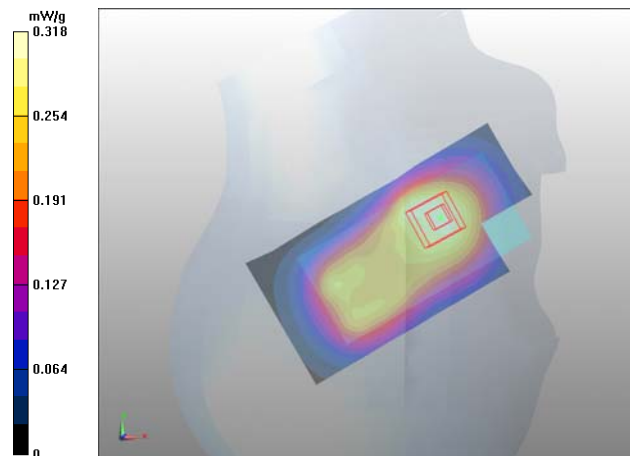
Configuration/Cheek - High/Area Scan (6x10x1): Measurement grid: dx=15mm, dy=15mm

Configuration/Cheek position - Middle/Area Scan (6x11x1): Measurement grid: dx=15mm, dy=15mm

Motorola Fast SAR of Combined Scans: SAR(1 g) = 0.298 mW/g

SAR(10 g) = 0.206 mW/g

Maximum value of SAR (measured) = 0.318 mW/g



Date/Time: 2010-07-05 10:21:40, Date/Time: 2009-07-14 12:07:45

Test Laboratory: TCC Nokia

Type: RM-555; Serial: 351979/04/609680/6, Serial: 004401/10/682560/3

Communication System: WCDMA1900, Communication System: WLAN2450

Frequency: 1880 MHz, Frequency: 2442 MHz; Duty Cycle: 1:1

Medium: HSL1900, Medium: Head 2450; Medium Notes: $t = 20.9$ C, Medium Notes: Medium Temperature: 21.5 C

Medium parameters used: $f = 1880$ MHz; $\sigma = 1.36$ mho/m; $\epsilon_r = 39.5$; $\rho = 1000$ kg/m³, Medium parameters used:
 $f = 2442$ MHz; $\sigma = 1.88$ mho/m; $\epsilon_r = 37.6$; $\rho = 1000$ kg/m³

Phantom section: Left Section

DASY4 Configuration:

- Probe: ES3DV3 - SN3194, Probe: ES3DV3 - SN3119
- ConvF(5.06, 5.06, 5.06), ConvF(4.44, 4.44, 4.44); Calibrated: 2009-11-20, Calibrated: 2008-09-23
- Sensor-Surface: 4mm (Mechanical Surface Detection)
- Electronics: DAE4 Sn728, Electronics: DAE4 Sn710; Calibrated: 2010-03-19, Calibrated: 2008-09-23
- Phantom: SAM 1, Phantom: SAM 8; Type: Twin SAM 040 CA, Type: SAM Twin Phantom; Serial: TP-1449, Serial: TP-1408
- ; SEMCAD X Version 14.0 Build 61

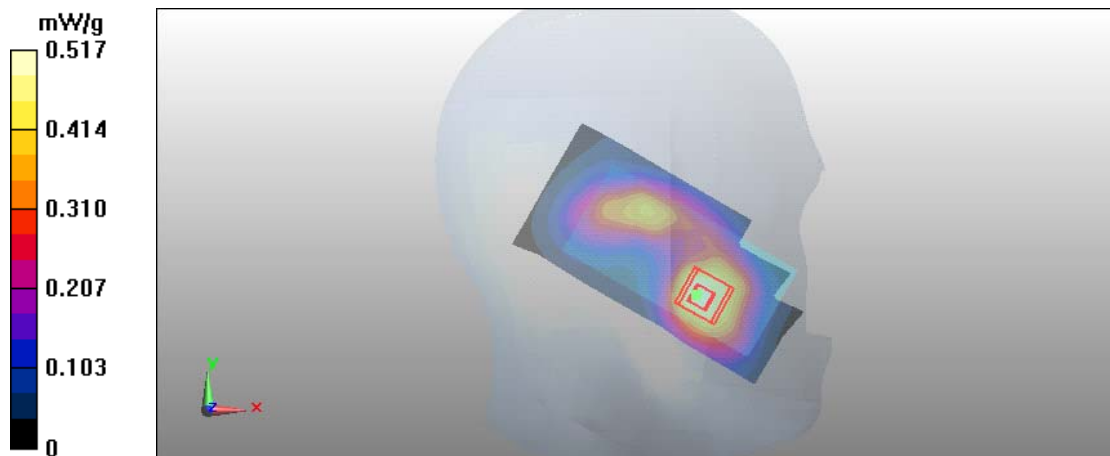
Configuration/Cheek - Middle - Slide closed/Area Scan (6x10x1): Measurement grid: dx=15mm, dy=15mm

Configuration/Cheek position - Middle/Area Scan (6x11x1): Measurement grid: dx=15mm, dy=15mm

Motorola Fast SAR of Combined Scans: SAR(1 g) = 0.473 mW/g

SAR(10 g) = 0.288 mW/g

Maximum value of SAR (measured) = 0.517 mW/g



Date/Time: 2010-08-31 14:02:49, Date/Time: 2009-07-16 13:41:36

Test Laboratory: TCC Nokia

Type: RM-553, Type: RM-555; Serial: 004402/13/166009/8, Serial: 004401/10/682560/3

Communication System: WCDMA850, Communication System: WLAN2450

Frequency: 846.6 MHz, Frequency: 2442 MHz; Duty Cycle: 1:1

Medium: BSL850, Medium: Body 2450; Medium Notes: 20.1 C, Medium Notes: Medium Temperature: 21.7 C

Medium parameters used: $f = 847 \text{ MHz}$; $\sigma = 1.01 \text{ mho/m}$; $\epsilon_r = 54.2$; $\rho = 1000 \text{ kg/m}^3$, Medium parameters used:
 $f = 2442 \text{ MHz}$; $\sigma = 1.93 \text{ mho/m}$; $\epsilon_r = 51$; $\rho = 1000 \text{ kg/m}^3$

Phantom section: Flat Section

DASY4 Configuration:

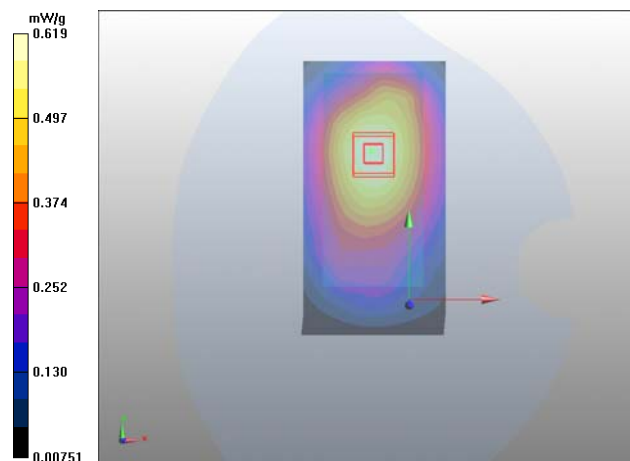
- Probe: ET3DV6 - SN1395, Probe: ES3DV3 - SN3116
- ConvF(5.76, 5.76, 5.76), ConvF(4.04, 4.04, 4.04); Calibrated: 2010-04-22, Calibrated: 2009-03-16
- Sensor-Surface: 4mm (Mechanical Surface Detection)
- Electronics: DAE4 Sn1213, Electronics: DAE3 Sn501; Calibrated: 2009-11-16, Calibrated: 2009-03-12
- Phantom: SAM 1, Phantom: SAM 4.5; Type: Twin SAM 040 CA, Type: Twin Phantom; Serial: TP-1179, Serial: TP-1215
- ; SEMCAD X Version 14.0 Build 61

Configuration/Body - High - No Accessory - Back Facing Phantom/Area Scan (6x10x1): Measurement grid:
 $dx=15\text{mm}$, $dy=15\text{mm}$

Configuration/Body - Middle - No Accessory - Back facing phantom/Area Scan (6x11x1): Measurement grid:
 $dx=15\text{mm}$, $dy=15\text{mm}$

Motorola Fast SAR of Combined Scans: SAR(1 g) = 0.587 mW/g
SAR(10 g) = 0.410 mW/g

Maximum value of SAR (measured) = 0.619 mW/g



Date/Time: 2010-07-05 13:33:36, Date/Time: 2009-07-16 13:41:36

Test Laboratory: TCC Nokia

Type: RM-555; Serial: 351979/04/609680/6, Serial: 004401/10/682560/3

Communication System: WCDMA1900, Communication System: WLAN2450

Frequency: 1880 MHz, Frequency: 2442 MHz; Duty Cycle: 1:1

Medium: BSL1900, Medium: Body 2450; Medium Notes: t=20.8 C, Medium Notes: Medium Temperature: 21.7 C

Medium parameters used: $f = 1880$ MHz; $\sigma = 1.49$ mho/m; $\epsilon_r = 52.8$; $\rho = 1000$ kg/m³, Medium parameters used:
 $f = 2442$ MHz; $\sigma = 1.93$ mho/m; $\epsilon_r = 51$; $\rho = 1000$ kg/m³

Phantom section: Flat Section

DASY4 Configuration:

- Probe: ES3DV3 - SN3194, Probe: ES3DV3 - SN3116
- ConvF(4.67, 4.67, 4.67), ConvF(4.04, 4.04, 4.04); Calibrated: 2009-11-20, Calibrated: 2009-03-16
- Sensor-Surface: 4mm (Mechanical Surface Detection)
- Electronics: DAE4 Sn728, Electronics: DAE3 Sn501; Calibrated: 2010-03-19, Calibrated: 2009-03-12
- Phantom: SAM 2, Phantom: SAM 4.5; Type: Twin SAM 040 CA, Type: Twin Phantom; Serial: TP - 1177, Serial: TP-1215
- ; SEMCAD X Version 14.0 Build 61

Configuration/Body - Middle - Slide Closed - No Accessory - Back Facing Phantom/Area Scan (6x10x1):

Measurement grid: dx=15mm, dy=15mm

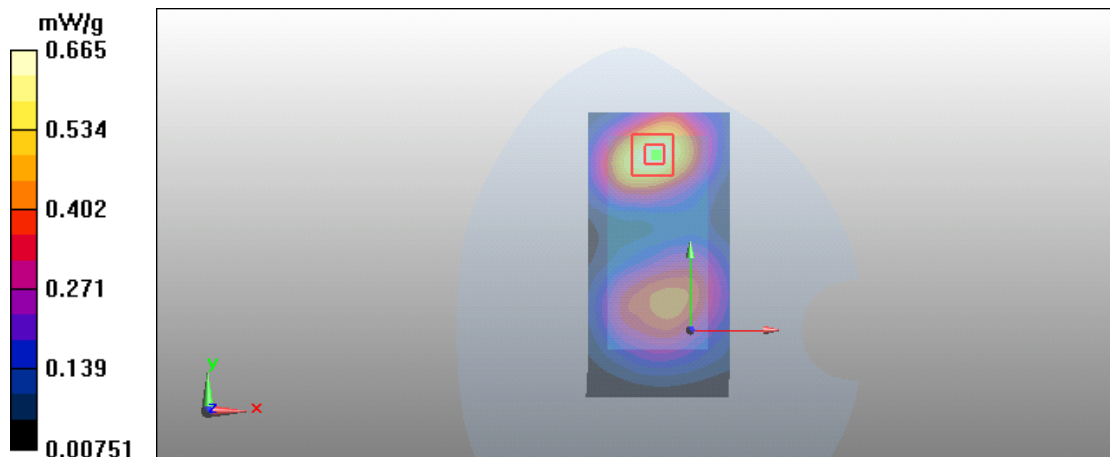
Configuration/Body - Middle - No Accessory - Back facing phantom/Area Scan (6x11x1): Measurement grid:

dx=15mm, dy=15mm

Motorola Fast SAR of Combined Scans: SAR(1 g) = 0.612 mW/g

SAR(10 g) = 0.362 mW/g

Maximum value of SAR (measured) = 0.665 mW/g



APPENDIX C: RELEVANT PAGES FROM PROBE CALIBRATION REPORT(S)



Accredited by the Swiss Accreditation Service (SAS)
The Swiss Accreditation Service is one of the signatories to the EA
Multilateral Agreement for the recognition of calibration certificates

Accreditation No.: SCS 108

Client **Nokia Salo TCC**

Certificate No: **ET3-1395_Apr10**

CALIBRATION CERTIFICATE

Object **ET3DV6 - SN:1395**

Calibration procedure(s) **QA CAL-01.v6, QA CAL-23.v3 and QA CAL-25.v2
Calibration procedure for dosimetric E-field probes**

Calibration date: **April 22, 2010**

This calibration certificate documents the traceability to national standards, which realize the physical units of measurements (SI).
The measurements and the uncertainties with confidence probability are given on the following pages and are part of the certificate.

All calibrations have been conducted in the closed laboratory facility: environment temperature (22 ± 3)°C and humidity < 70%.

Calibration Equipment used (M&TE critical for calibration)

Primary Standards	ID #	Cal Date (Certificate No.)	Scheduled Calibration
Power meter E4419B	GB41293874	1-Apr-10 (No. 217-01136)	Apr-11
Power sensor E4412A	MY41495277	1-Apr-10 (No. 217-01136)	Apr-11
Power sensor E4412A	MY41498087	1-Apr-10 (No. 217-01136)	Apr-11
Reference 3 dB Attenuator	SN: S5054 (3c)	30-Mar-10 (No. 217-01159)	Mar-11
Reference 20 dB Attenuator	SN: S5086 (20b)	30-Mar-10 (No. 217-01161)	Mar-11
Reference 30 dB Attenuator	SN: S5129 (30b)	30-Mar-10 (No. 217-01160)	Mar-11
Reference Probe ES3DV2	SN: 3013	30-Dec-09 (No. ES3-3013_Dec09)	Dec-10
DAE4	SN: 660	29-Sep-09 (No. DAE4-660_Sep09)	Sep-10

Secondary Standards	ID #	Check Date (in house)	Scheduled Check
RF generator HP 8648C	US3642U01700	4-Aug-99 (in house check Oct-09)	In house check: Oct-11
Network Analyzer HP 8753E	US37390585	18-Oct-01 (in house check Oct-09)	In house check: Oct10

Calibrated by:	Name Marcel Fehr	Function Laboratory Technician	Signature
Approved by:	Katja Pokovic	Technical Manager	

Issued: April 22, 2010

This calibration certificate shall not be reproduced except in full without written approval of the laboratory.

DASY - Parameters of Probe: ET3DV6 SN:1395

Calibration Parameter Determined in Head Tissue Simulating Media

f [MHz]	Validity [MHz] ^c	Permittivity	Conductivity	ConvF X	ConvF Y	ConvF Z	Alpha	Depth Unc (k=2)
835	± 50 / ± 100	41.9 ± 5%	0.89 ± 5%	5.87	5.87	5.87	0.61	1.98 ± 11.0%
1750	± 50 / ± 100	40.1 ± 5%	1.37 ± 5%	5.13	5.13	5.13	0.81	1.90 ± 11.0%
1900	± 50 / ± 100	40.0 ± 5%	1.40 ± 5%	4.88	4.88	4.88	0.91	1.85 ± 11.0%
2450	± 50 / ± 100	39.2 ± 5%	1.80 ± 5%	4.38	4.38	4.38	0.99	1.61 ± 11.0%

^c The validity of ± 100 MHz only applies for DASY v4.4 and higher (see Page 2). The uncertainty is the RSS of the ConvF uncertainty at calibration frequency and the uncertainty for the indicated frequency band.

DASY - Parameters of Probe: ET3DV6 SN:1395

Calibration Parameter Determined in Body Tissue Simulating Media

f [MHz]	Validity [MHz] [Ⓒ]	Permittivity	Conductivity	ConvF X	ConvF Y	ConvF Z	Alpha	Depth Unc (k=2)
835	± 50 / ± 100	55.2 ± 5%	0.97 ± 5%	5.76	5.76	5.76	0.53	2.20 ± 11.0%
1750	± 50 / ± 100	53.4 ± 5%	1.49 ± 5%	4.50	4.50	4.50	0.71	2.76 ± 11.0%
1900	± 50 / ± 100	53.3 ± 5%	1.52 ± 5%	4.27	4.27	4.27	0.91	2.34 ± 11.0%
2450	± 50 / ± 100	52.7 ± 5%	1.95 ± 5%	3.99	3.99	3.99	0.99	1.44 ± 11.0%

[Ⓒ] The validity of ± 100 MHz only applies for DASY v4.4 and higher (see Page 2). The uncertainty is the RSS of the ConvF uncertainty at calibration frequency and the uncertainty for the indicated frequency band.

APPENDIX D: RELEVANT PAGES FROM DIPOLE VALIDATION KIT REPORT(S)



Accredited by the Swiss Accreditation Service (SAS)

Accreditation No.: **SCS 108**

The Swiss Accreditation Service is one of the signatories to the EA
Multilateral Agreement for the recognition of calibration certificates

Client **Nokia Salo TCC**

Certificate No: **D835V2-480_Oct09**

CALIBRATION CERTIFICATE

Object **D835V2 - SN: 480**

Calibration procedure(s) **QA CAL-05.v7**
Calibration procedure for dipole validation kits

Calibration date: **October 19, 2009**

This calibration certificate documents the traceability to national standards, which realize the physical units of measurements (SI).
The measurements and the uncertainties with confidence probability are given on the following pages and are part of the certificate.

All calibrations have been conducted in the closed laboratory facility: environment temperature (22 ± 3)°C and humidity < 70%.

Calibration Equipment used (M&TE critical for calibration)

Primary Standards	ID #	Cal Date (Certificate No.)	Scheduled Calibration
Power meter EPM-442A	GB37480704	06-Oct-09 (No. 217-01086)	Oct-10
Power sensor HP 8481A	US37292783	06-Oct-09 (No. 217-01086)	Oct-10
Reference 20 dB Attenuator	SN: 5086 (20g)	31-Mar-09 (No. 217-01025)	Mar-10
Type-N mismatch combination	SN: 5047.2 / 06327	31-Mar-09 (No. 217-01029)	Mar-10
Reference Probe ES3DV3	SN: 3205	26-Jun-09 (No. ES3-3205_Jun09)	Jun-10
DAE4	SN: 601	07-Mar-09 (No. DAE4-601_Mar09)	Mar-10

Secondary Standards	ID #	Check Date (in house)	Scheduled Check
Power sensor HP 8481A	MY41092317	18-Oct-02 (in house check Oct-09)	In house check: Oct-11
RF generator R&S SMT-06	100005	4-Aug-99 (in house check Oct-09)	In house check: Oct-11
Network Analyzer HP 8753E	US37390585 S4206	18-Oct-01 (in house check Oct-09)	In house check: Oct-10

	Name	Function	Signature
Calibrated by:	Jeton Kastrati	Laboratory Technician	

Approved by:	Katja Pokovic	Technical Manager
--------------	---------------	-------------------

Issued: October 19, 2009

This calibration certificate shall not be reproduced except in full without written approval of the laboratory.

DASY5 Validation Report for Head TSL

Date/Time: 19.10.2009 10:11:32

Test Laboratory: SPEAG, Zurich, Switzerland

DUT: Dipole 835 MHz; Type: D835V2; Serial: D835V2 - SN:480

Communication System: CW; Frequency: 835 MHz; Duty Cycle: 1:1

Medium: HSL900

Medium parameters used: $f = 835 \text{ MHz}$; $\sigma = 0.88 \text{ mho/m}$; $\epsilon_r = 40.5$; $\rho = 1000 \text{ kg/m}^3$

Phantom section: Flat Section

Measurement Standard: DASY5 (IEEE/IEC/ANSI C63.19-2007)

DASY5 Configuration:

- Probe: ES3DV3 - SN3205; ConvF(6.04, 6.04, 6.04); Calibrated: 26.06.2009
- Sensor-Surface: 3mm (Mechanical Surface Detection)
- Electronics: DAE4 Sn601; Calibrated: 07.03.2009
- Phantom: Flat Phantom 4.9L; Type: QD000P49AA; Serial: 1001
- Measurement SW: DASY5, V5.2 Build 157; SEMCAD X Version 14.0 Build 57

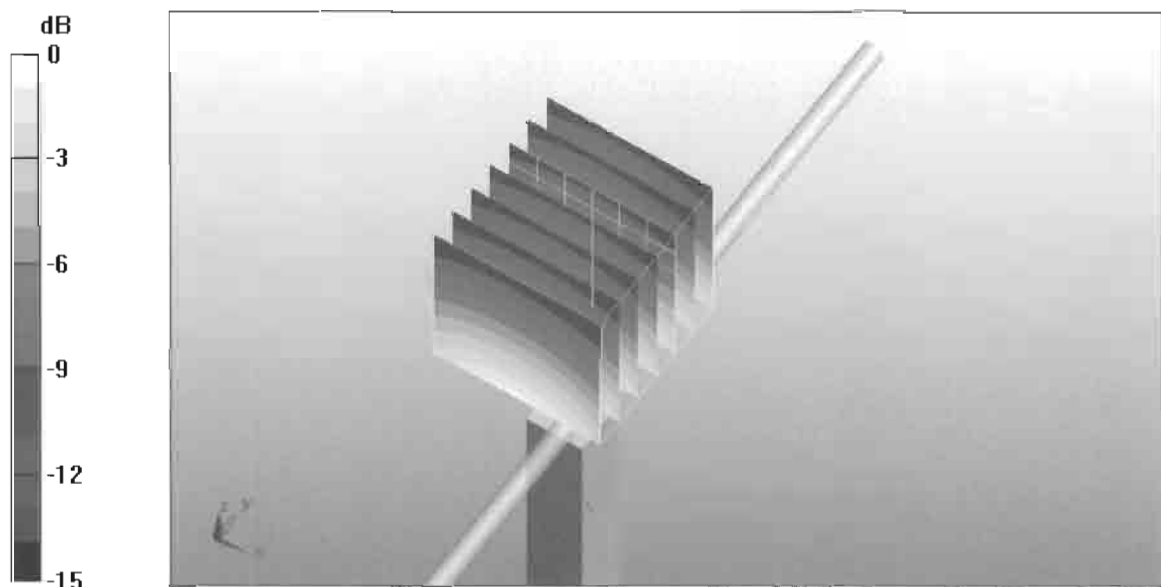
Pin=250 mW /d=15mm, dist=3.0mm (ES-Probe)/Zoom Scan (7x7x7)/Cube 0: Measurement grid: $dx=5\text{mm}$, $dy=5\text{mm}$, $dz=5\text{mm}$

Reference Value = 57.6 V/m; Power Drift = 0.00856 dB

Peak SAR (extrapolated) = 3.53 W/kg

SAR(1 g) = 2.36 mW/g; SAR(10 g) = 1.55 mW/g

Maximum value of SAR (measured) = 2.76 mW/g



0 dB = 2.76mW/g

DASY5 Validation Report for Body

Date/Time: 19.10.2009 13:40:30

Test Laboratory: SPEAG, Zurich, Switzerland

DUT: Dipole 835 MHz; Type: D835V2; Serial: D835V2 - SN:480

Communication System: CW; Frequency: 835 MHz; Duty Cycle: 1:1

Medium: MSL900

Medium parameters used: $f = 835 \text{ MHz}$; $\sigma = 1.01 \text{ mho/m}$; $\epsilon_r = 53.2$; $\rho = 1000 \text{ kg/m}^3$

Phantom section: Flat Section

Measurement Standard: DASY5 (IEEE/IEC/ANSI C63.19-2007)

DASY5 Configuration:

- Probe: ES3DV3 - SN3205; ConvF(5.97, 5.97, 5.97); Calibrated: 26.06.2009
- Sensor-Surface: 3mm (Mechanical Surface Detection)
- Electronics: DAE4 Sn601; Calibrated: 07.03.2009
- Phantom: Flat Phantom 4.9L; Type: QD000P49AA; Serial: 1001
- Measurement SW: DASY5, V5.2 Build 157; SEMCAD X Version 14.0 Build 57

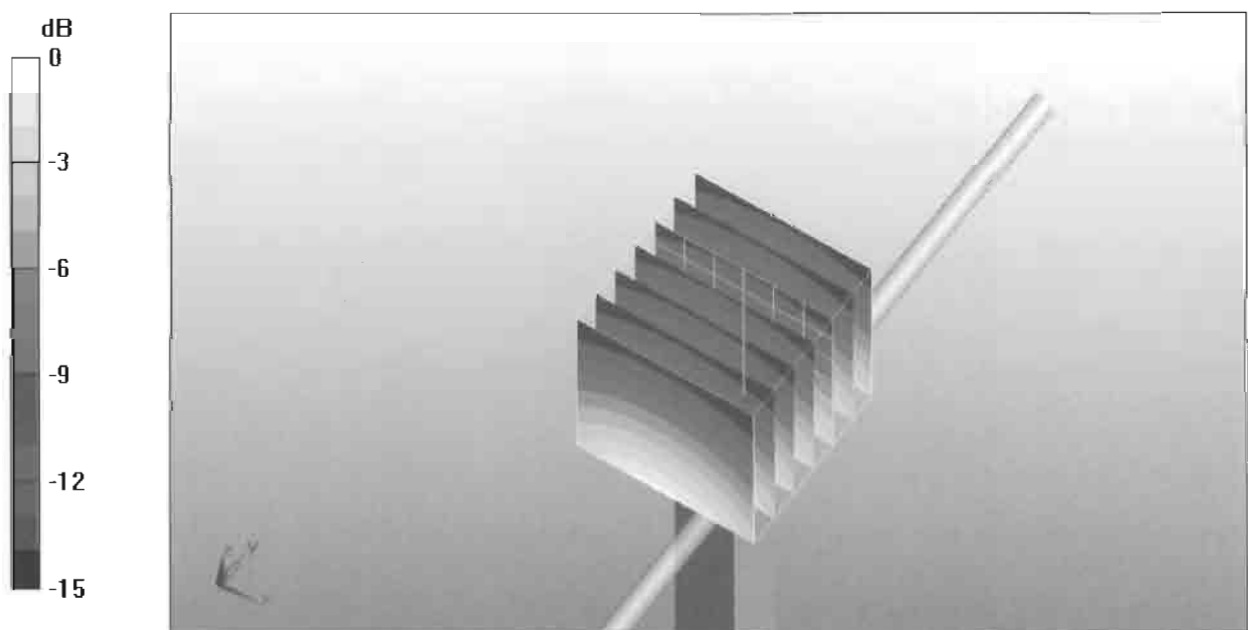
Pin250 mW /d=15mm, dist=3.0mm (ES-Probe)/Zoom Scan (7x7x7)/Cube 0: Measurement grid: $dx=5\text{mm}$, $dy=5\text{mm}$, $dz=5\text{mm}$

Reference Value = 55.5 V/m; Power Drift = 0.014 dB

Peak SAR (extrapolated) = 3.74 W/kg

SAR(1 g) = 2.52 mW/g; SAR(10 g) = 1.65 mW/g

Maximum value of SAR (measured) = 2.94 mW/g



0 dB = 2.94mW/g