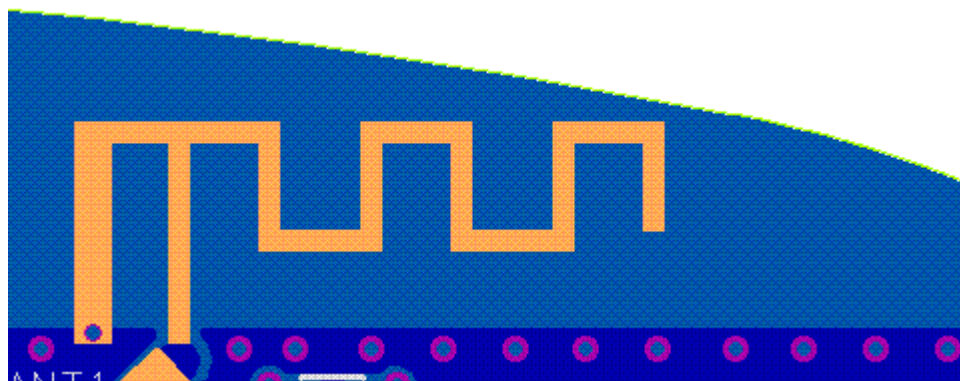


Printed PCB Antenna Design for 2.4 Ghz

Model : BTF5XT



Features:

- Compact and easy design
- Cost effective
- Omni-directional pattern
- Mixed polarisation
- Wide bandwidth

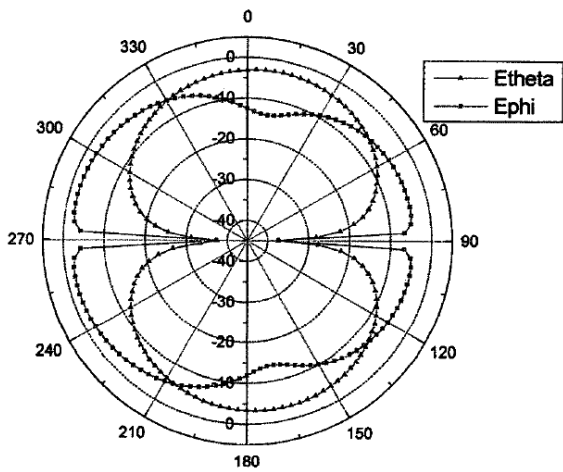
Application:

- WLAN
- Bluetooth
- Other 2.4 Ghz pcb-integrated antenna

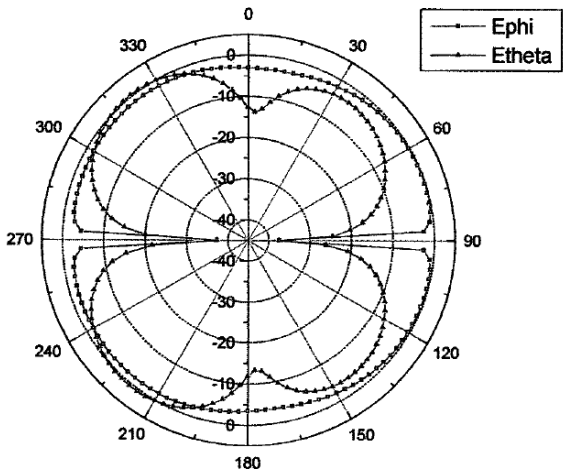
Specifications:

| | |
|------------------------|---------------|
| Frequency range | 2.4 – 2.5 GHz |
| Peak gain | 2.5 dBi |
| VSWR | 2 max |
| Impedance | 50 Ohms |
| Return loss S11 | - 24 dB |
| | |

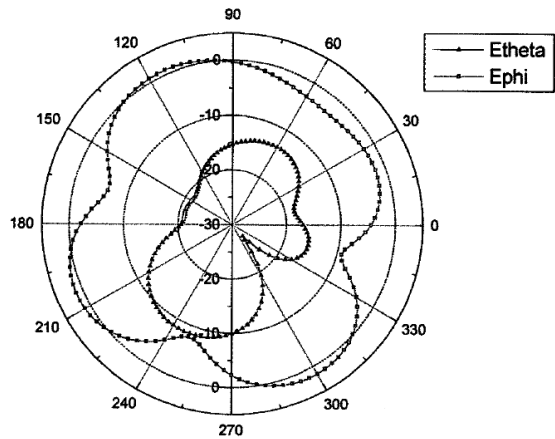
Gain patterns:



X-Z cut gain pattern



Y-Z cut gain pattern



X-Y cut gain pattern