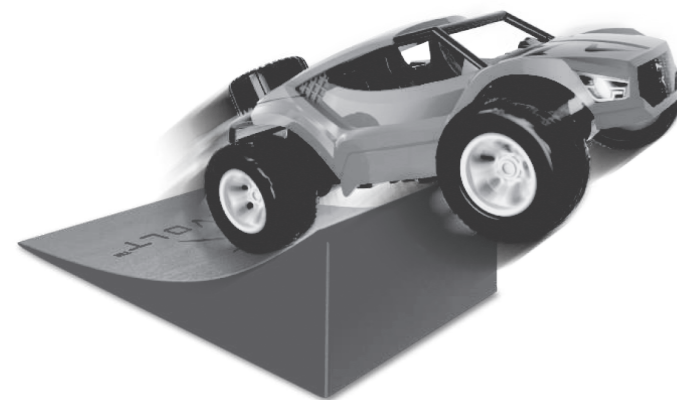


STUNT SPEEDER



The materials, specifications, parts and packaging mentioned in this manual are for reference purposes only. We are not responsible for any changes made to this printed material, nor are we able to inform customers of any updates or changes. Please refer to our website: R3VOLT.COM for the latest information.

Important safety information

Thank you for buying this REVOLT item. To ensure that you operate the vehicle correctly, please read these instructions carefully before first use and store them in a safe place for future reference.

Safety information

- *Keep the smaller-sized accessories out of the reach of children.
- *Do not store batteries in a hot environment (e.g. near open flames or a heating device).
- *Children must be supervised by an adult when operating the vehicle. The vehicle should always remain within the line of sight of the driver (or instructor).
- *Do not recharge non-rechargeable batteries. When installing or changing the batteries, ensure that they are connected in the correct polarity. Do not mix old and new batteries or different types of batteries.
- *Do not short circuit the battery terminals.

*If you do not plan to use the vehicle for at least 10 days, discharge the battery to 40%-50% (i.e. if the battery is fully charged, drive the vehicle for half of the total driving time). This helps to prolong the lifespan of the battery.

*You must only use the charging cable provided. Disconnect the model from the charging cable before cleaning. Regularly inspect the charging cable's wires, plug socket, outer casing and other accessories to ensure that they are not damaged. If there are any signs of damage, discontinue use immediately until the fault has been repaired.

*After use, ensure that the vehicle and remote control are switched off and remove the batteries in the remote control.

*The packaging and this manual contain important information and should be kept in a safe place for future reference.

Repair and maintenance

- *Clean the product regularly with a clean, soft cloth.
- *Avoid exposing the product to direct sunlight or heat.
- *Do not submerge the product in water, as this may damage the electrical components.

About this product

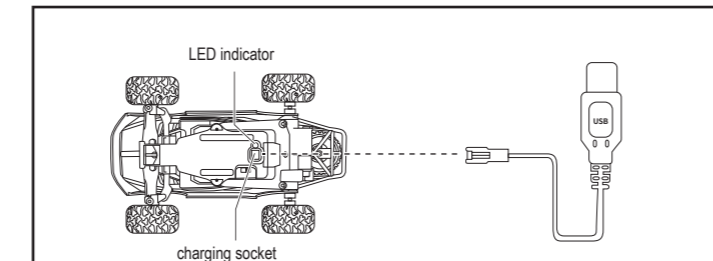
Specifications

Remote controlled vehicle	
Weight	64.5g (including battery)
Dimensions	13.5x8x5 cm
Remote control range	15-20m
Operating temperature	0 to 40 °C
Battery	3.7V 200mAh rechargeable battery (included)
Remote control	
Operating frequency	2.4 GHz
Operating temperature	0 to 40 °C
Battery Requirements	2x AA 1.5V Batteries (not included)
Ramp	
Weight	25g
Dimensions	19x11x7.5cm

Safety information:

1. Switch off the product before charging the battery, and then connect the USB charging cable (ensure that the charging connector is connected in the correct orientation).
2. Connect the USB charging cable to a mobile USB charger or computer USB port. The indicator light on the USB charging cable will turn on to indicate that charging is in progress and switch off when charging is complete.
3. Pairing instructions: Switch on the vehicle. The indicator light will start to flash. Switch on the remote control and wait for the remote control indicator to flash. The devices will pair automatically and the indicator lights will switch off simultaneously when pairing is complete. After use, switch off the vehicle and remote control to preserve battery power.

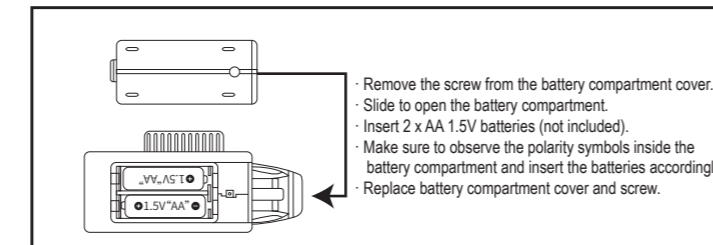
Charging the vehicle battery



Important: only use the charging cable provided.

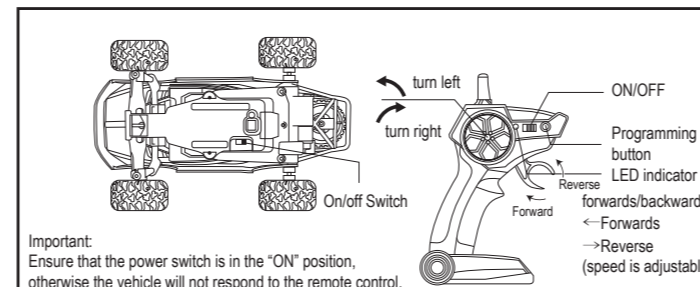
Charging the built-in vehicle battery

Installing the remote control batteries



- Remove the screw from the battery compartment cover.
- Slide to open the battery compartment.
- Insert 2 x AA 1.5V batteries (not included).
- Make sure to observe the polarity symbols inside the battery compartment and insert the batteries accordingly.
- Replace battery compartment cover and screw.

Operating the vehicle and remote control

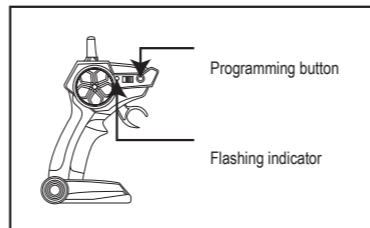


Important: Ensure that the power switch is in the "ON" position, otherwise the vehicle will not respond to the remote control.

Programming a sequence of movements

1. The remote control can be programmed to perform a sequence of movements. After pairing the vehicle with the remote control, enter programming mode by holding down the programming button for 2 seconds until the LED indicator starts to flash. Example: Forwards + turn left + turn right, reverse + turn left + turn right, forwards + reverse + turn left. You can program up to 14 movements.

Fig 1. Hold down the programming button to enter programming mode



2. After programming the desired movements, press the programming button to exit programming mode. The LED indicator will switch off.
3. To perform the programmed sequence of movements, press the programming button.

Fig. 2 Programming a sequence of movements

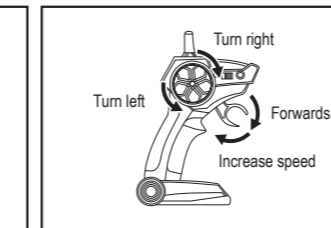
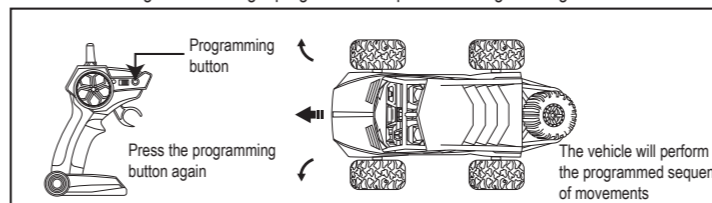


Fig. 3 Performing a programmed sequence of Programming mode



4. To reprogram the sequence of movements, follow the instructions in figure 1.

Note:

- ① The remote control will automatically exit programming mode after 8 seconds of inactivity. If you entered a sequence of movements, the sequence will be automatically saved.
- ② If you did not enter a sequence of movements, the remote control will automatically retain the most recently programmed sequence.
- ③ To stop the vehicle when it is performing your programmed sequence of movements, move the forwards, reverse, left or right controls.
- ④ If the remote control batteries are depleted when you attempt to program a sequence of movements, your sequence will not be saved. If this occurs, replace the batteries and try again.

Operation Frequency: 2410MHz to 2473MHz
MAX OUTPUT POWER: 7.125dBm (for EU)

Warning: Changes or modifications to this unit not expressly approved by the party responsible for compliance could void the users authority to operate the equipment.

NOTE: This equipment has been tested and found to comply with the limits for a Class B digital device, pursuant to Part 15 of the FCC Rules. These limits are designed to provide reasonable protection against harmful interference in a residential installation. This equipment generates, uses and can radiate radio frequency energy and, if not installed and used in accordance with the instructions, may cause harmful interference to radio communications.

However, there is no guarantee that interference will not occur in a particular installation. If this equipment does cause harmful interference to radio or television reception, which can be determined by turning the equipment off and on, the user is encouraged to try to correct the interference by one or more of the following measures:

- Reorient or relocate the receiving antenna.
- Increase the separation between the equipment and receiver
- Connect the equipment into an outlet on a circuit different from that to which the receiver is connected.
- Consult the dealer or an experienced radio/TV technician for help.

"This device complies with FCC radiation exposure limits set forth for general population (uncontrolled exposure). This device must not be collocated or operating in conjunction with any other antenna or transmitter."

Declaration of Conformity Inserts:
"Hereby, GuangDong Syma model drone Industrial co, Ltd, declares that this TG1007 is in compliance with the essential requirements and other relevant provisions of Directive 2014/53/EU."

A copy of the full DoC is attached.

SYMA MODEL AIRCRAFT INDUSTRIAL CO.LTD

Address: Intersection of Xingye Road No. 2 (West side) and Xingye Road (North side), Laimei Industrial Park, Chenghai District, Shantou, Guangdong Province, China
Sales hotline: 0754-86980668, After-sales hotline: 0754-86395095
Fax: 0754-86395098 Zip code: 515800

The manufacturer the right to the final interpretation of this instruction manual.