

Antennas Specifications for M7E Tera & Mega

Model MT-242043

Antenna Type: Patch Antenna

Frequency: 950-956 MHz

Polarization: Circular RHCP

Max. Gain:- 6.0 dBiL

Typical VSWR: 1.2:1

Axial Ratio: - 950-956 MHz @ 3.0 dB (max)

Impedance: 50 ohm

Connector: U.FI connector

Size: 305x305x25mm

Weight: 1.2 kg

Model S8964B

Antenna Type:- Dipole Antenna

Frequency:- 896-960 MHz

Polarization:- Linear Polarization

Max. Gain:- 6 dBi

Typical VSWR :- 1.2:1

Axial Ratio :-

Impedance:- 50 ohm

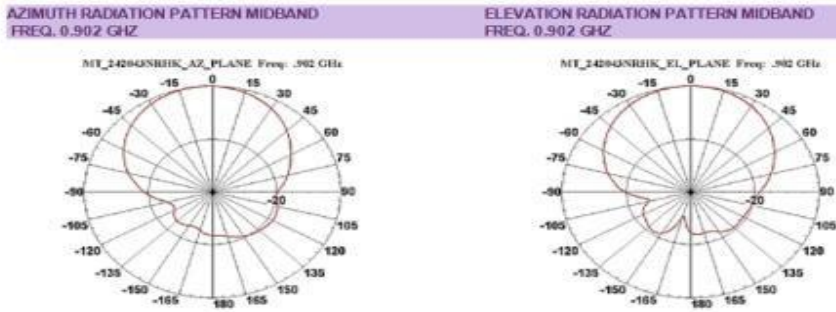
Connector:- U.FI conector

Size:- 305x305x25mm

Weight:- 700 g

Radiation pattern

MT-242043



S8964B

ANTENNA PATTERNS

