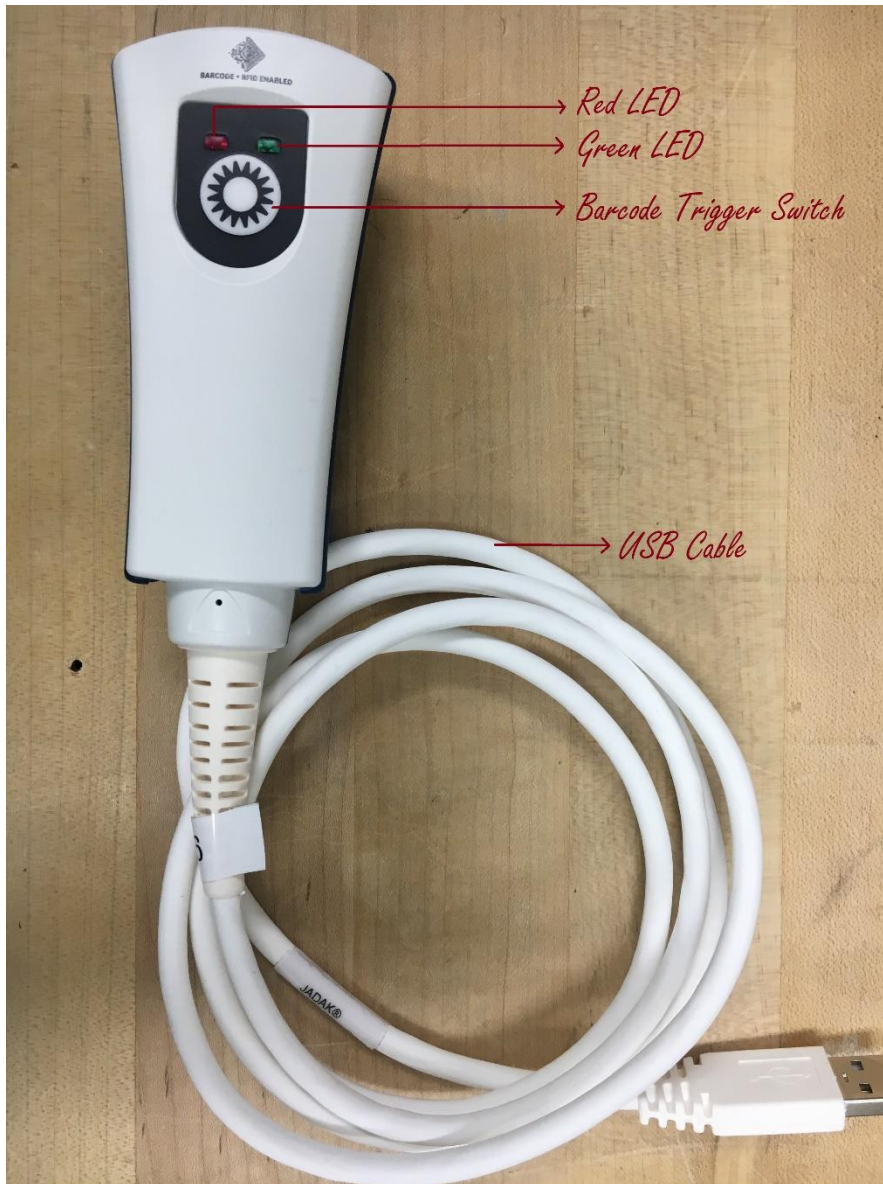
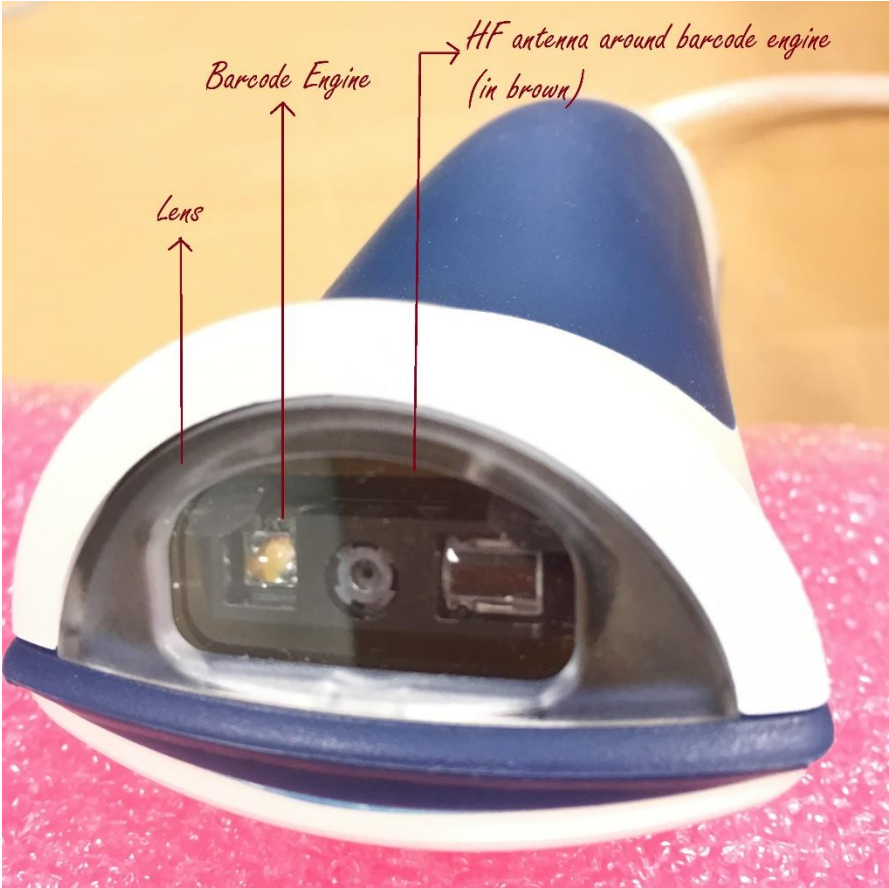


## FLEXTAP ASSEMBLY

### 1. Top View (Fully assembled):

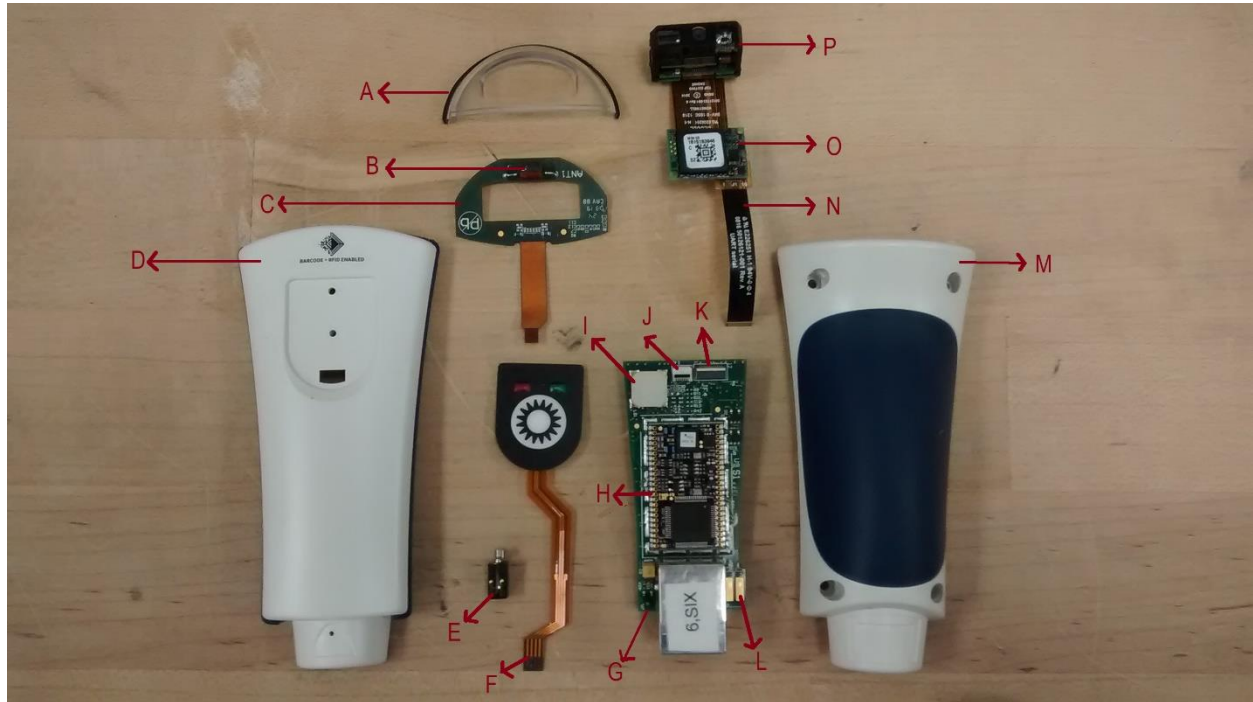


2. Bottom View (Fully assembled):



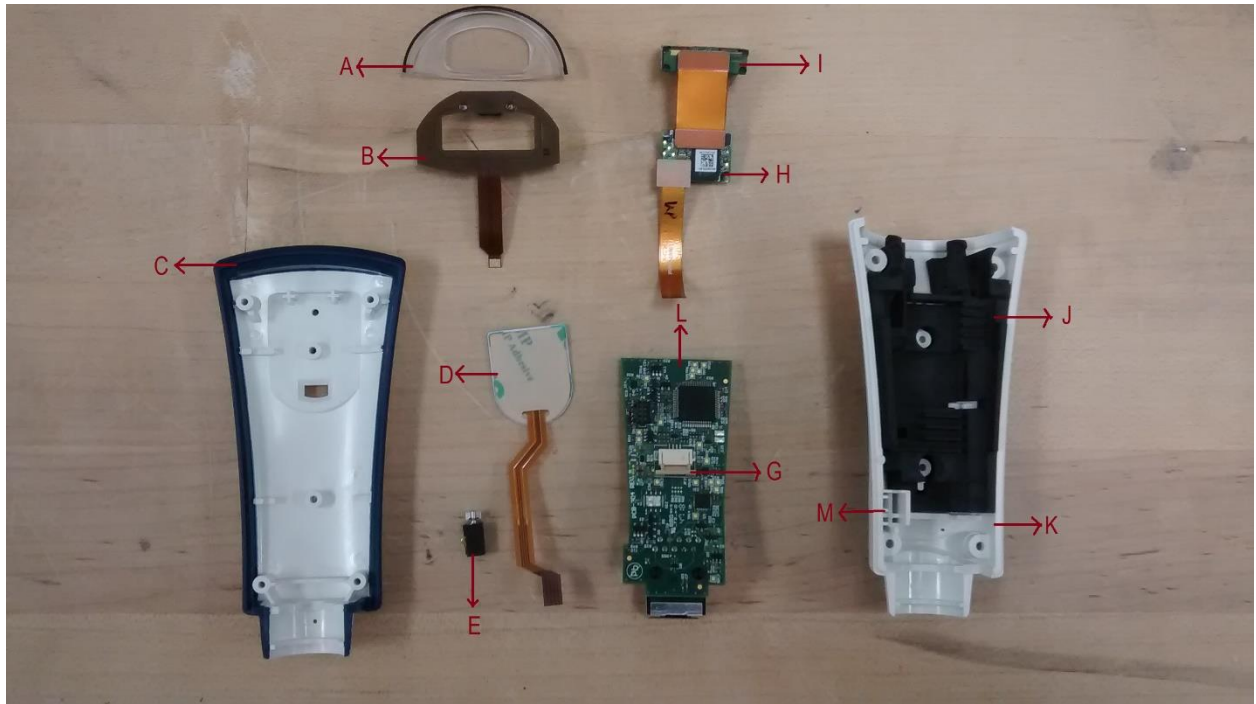
### 3. Individual parts that constitute Flextap:

#### 3.1. Top View:



- A- Camera Lens
- B- LF antenna
- C- HF antenna
- D- Top shell
- E- Vibration motor
- F- Trigger switch with Flex cable
- G- Interface board
- H- Buzzer
- I- 6-pin Flex connector, JF1
- J- 12-pin Flex connector, JF4
- K- Vibration motor placed here
- L- Bottom shell
- M- Flex cable
- N- Decoder board
- O- Barcode Engine

### 3.2. Bottom view:



- A- Camera Lens
- B- HF antenna
- C- Top Shell
- D- Trigger switch with Flex cable
- E- Vibration motor
- G- Flex connector, JF2, for trigger switch
- H- Decoder board
- I- Barcode Engine
- J- Boot
- K- Bottom Shell
- L- Interface board
- M- Vibration motor



