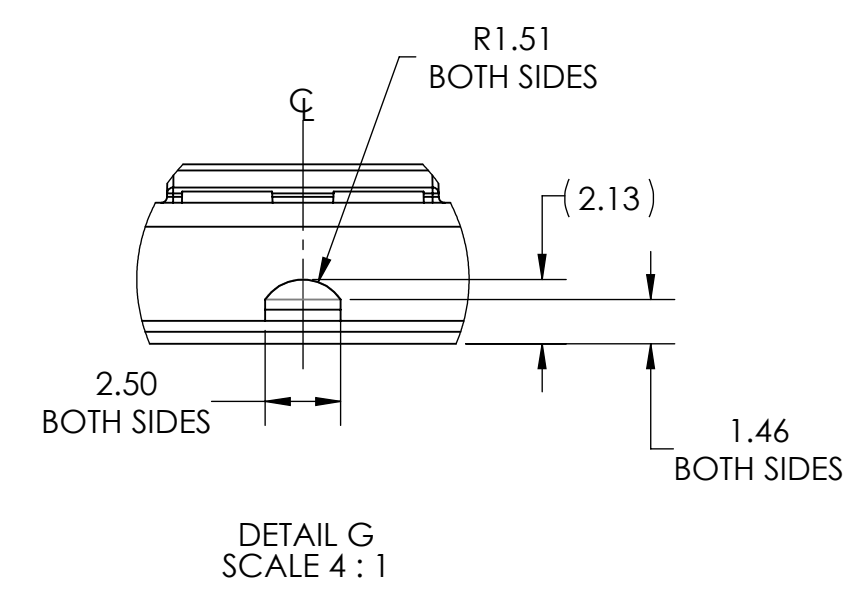
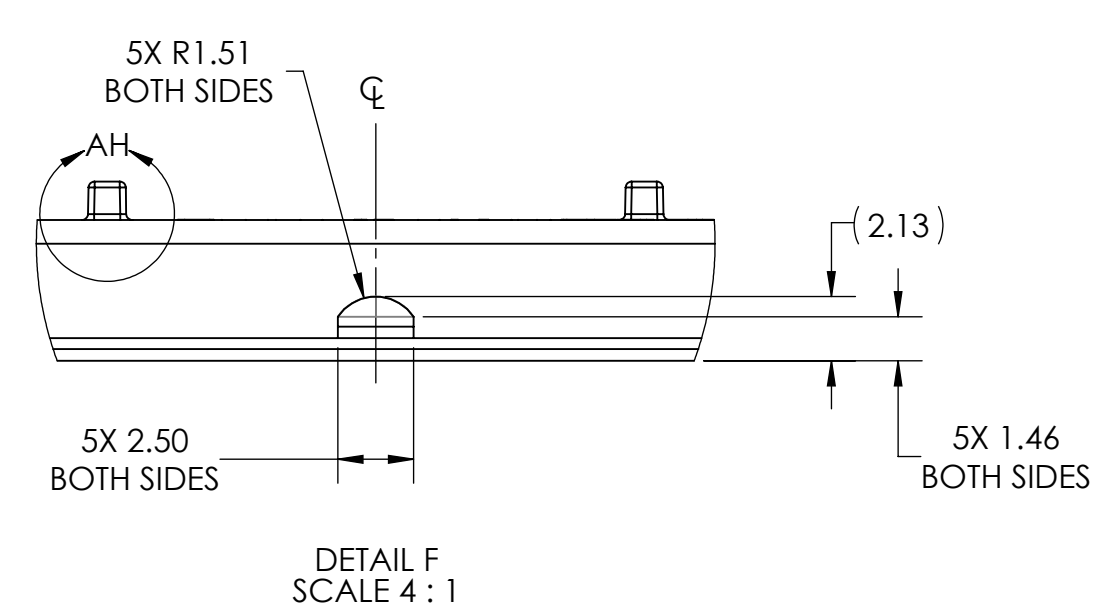
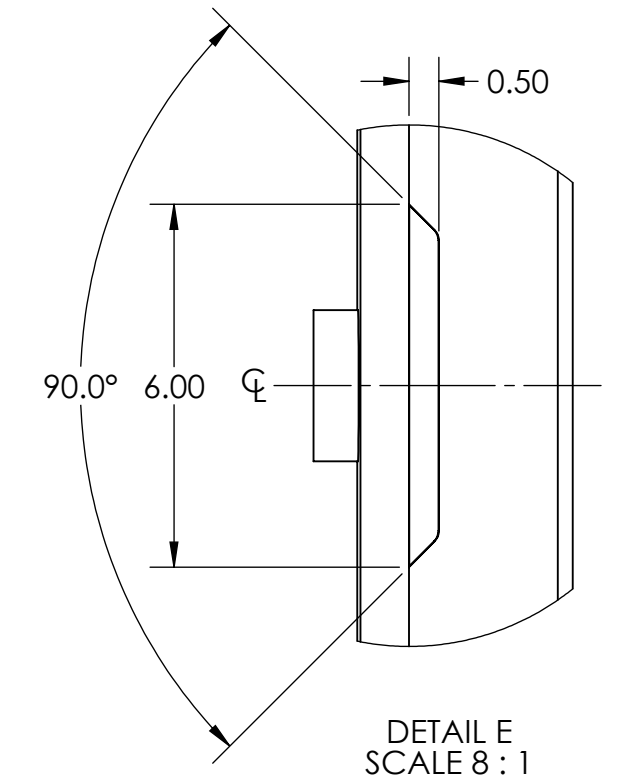
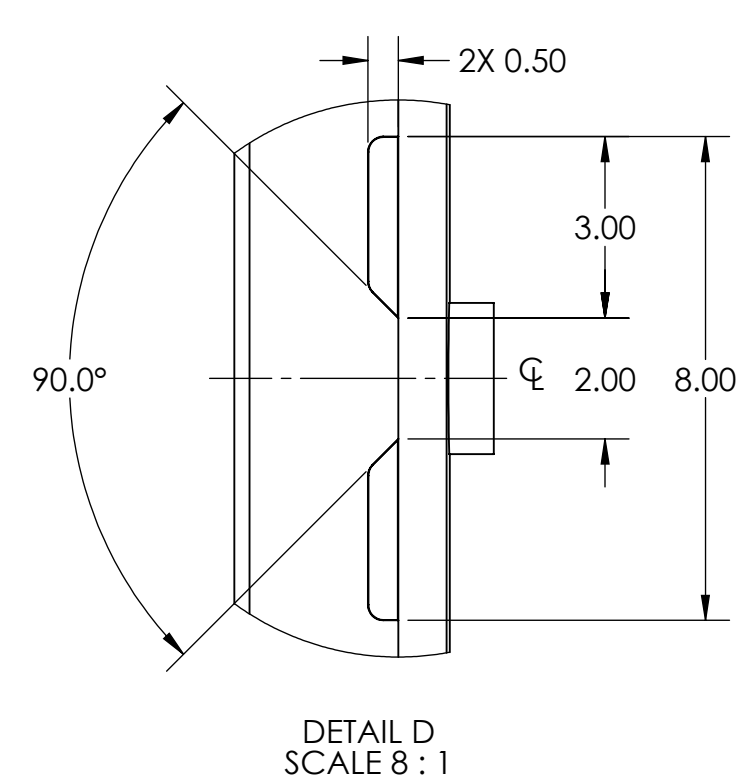
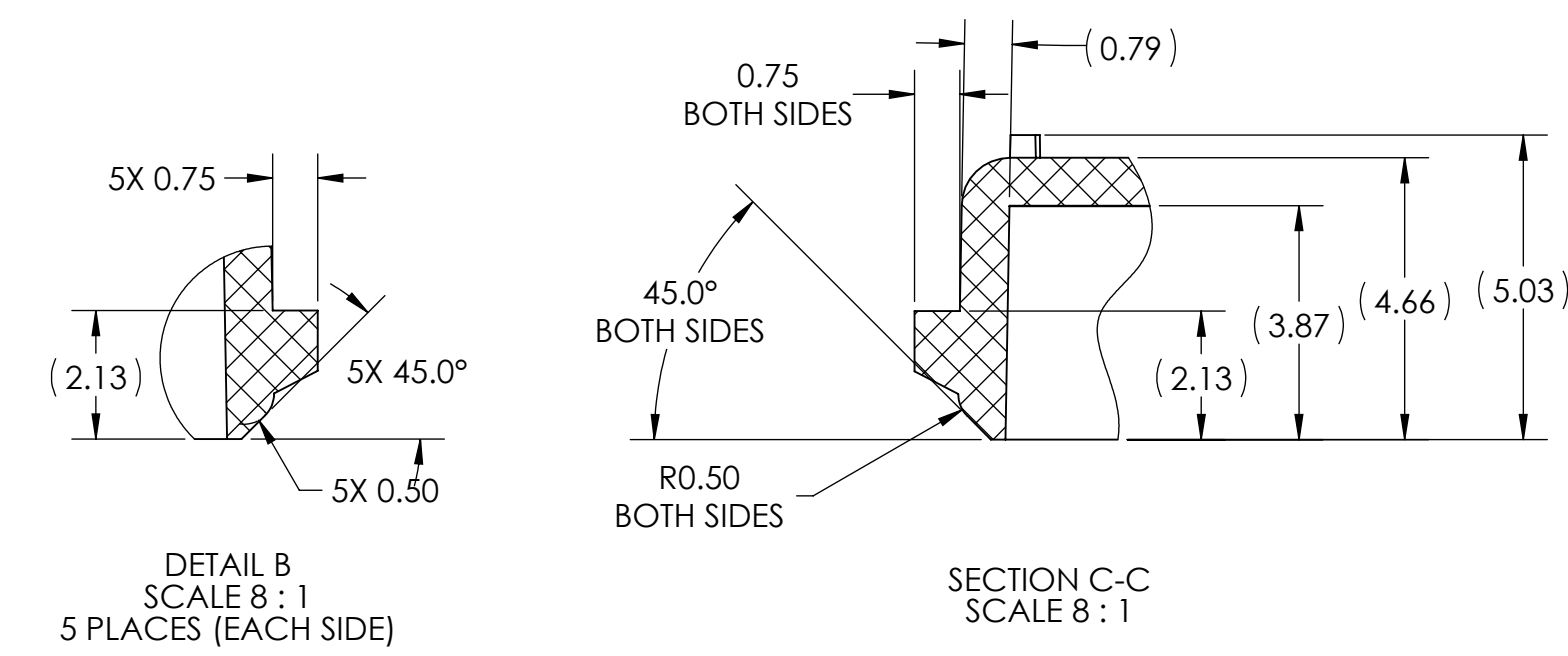
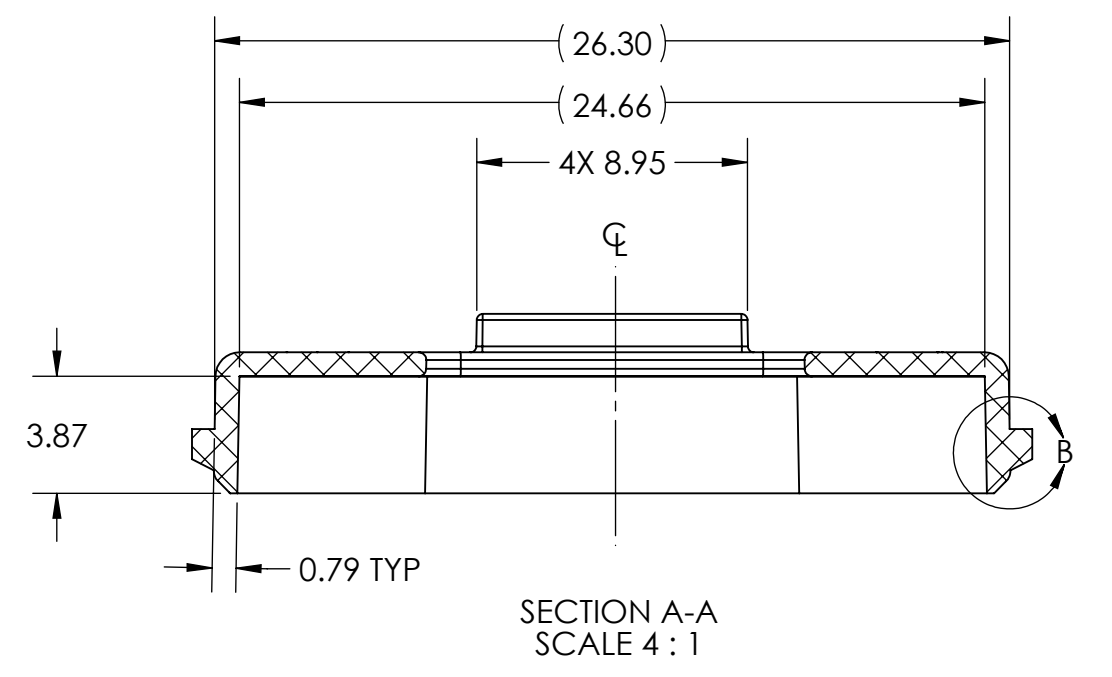
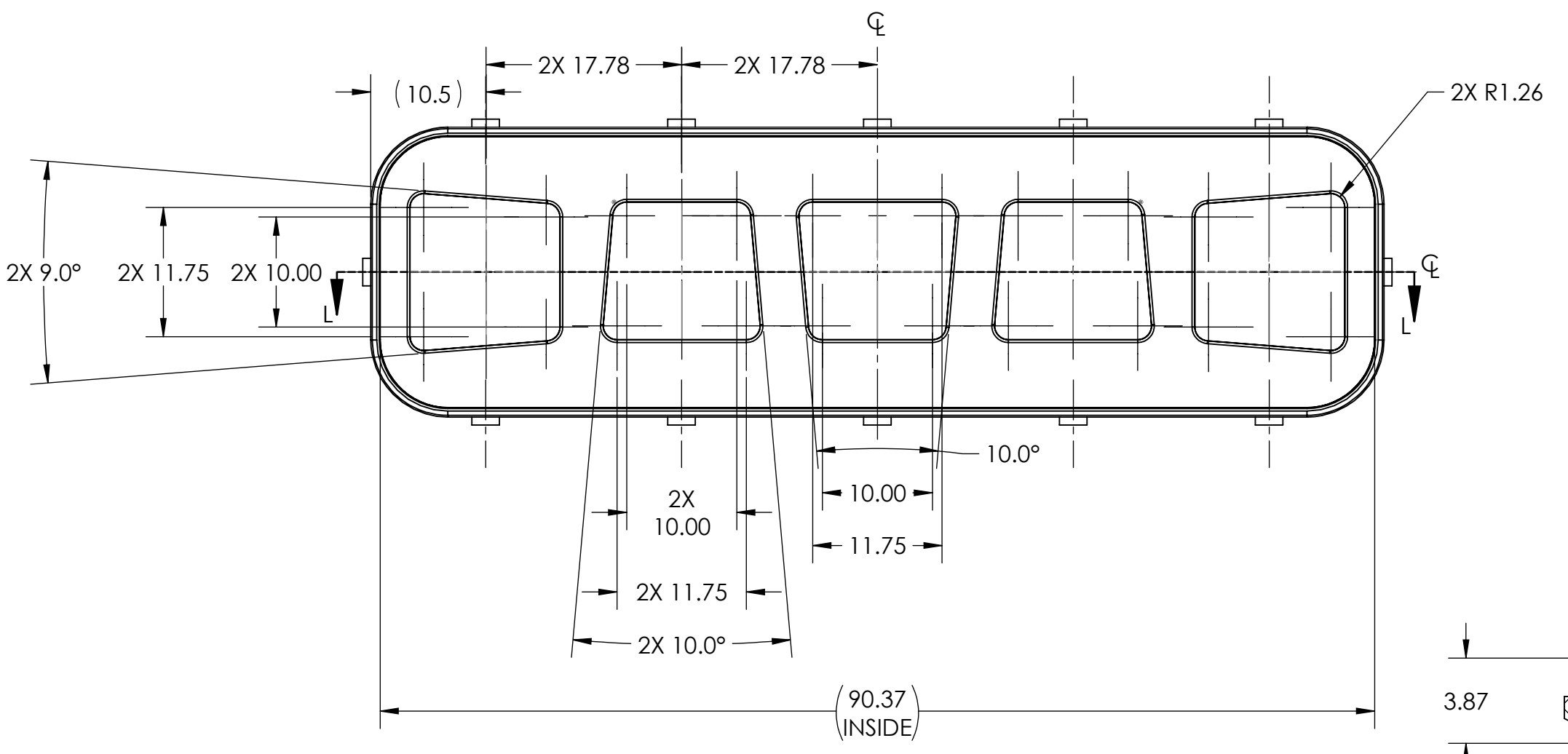
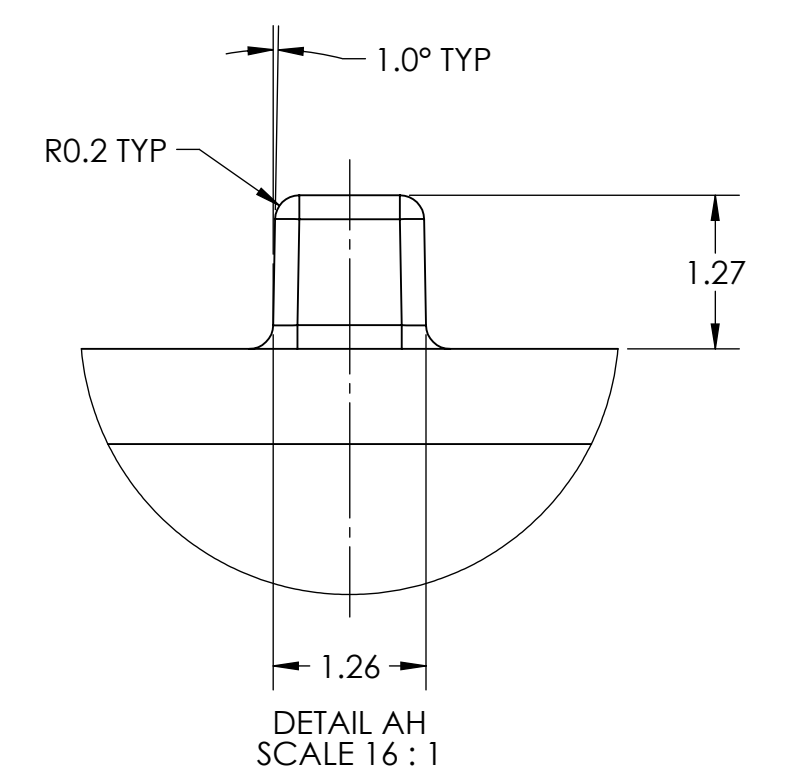
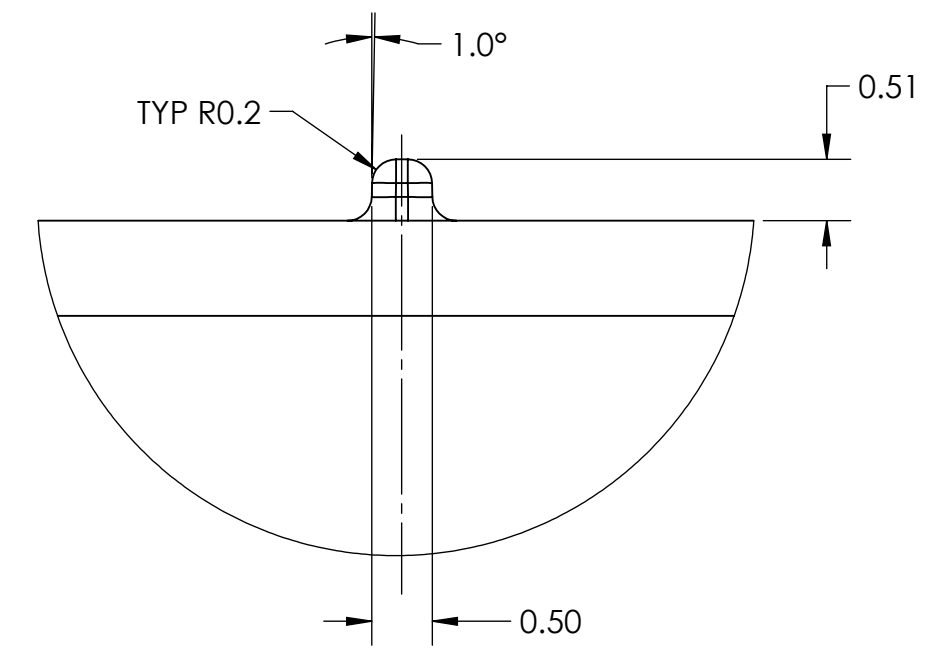
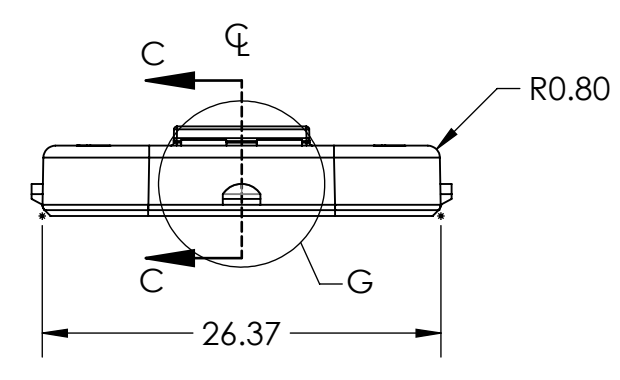
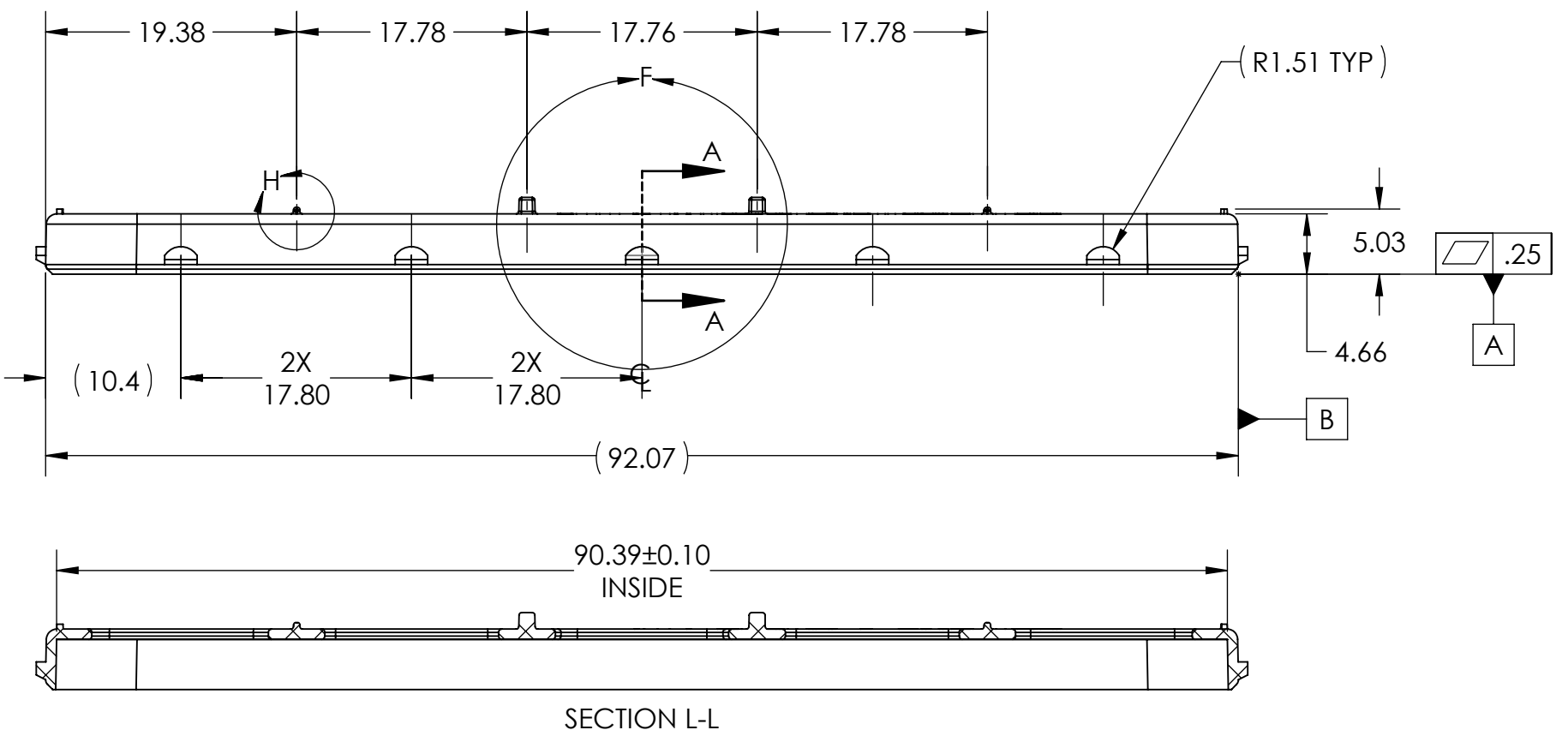
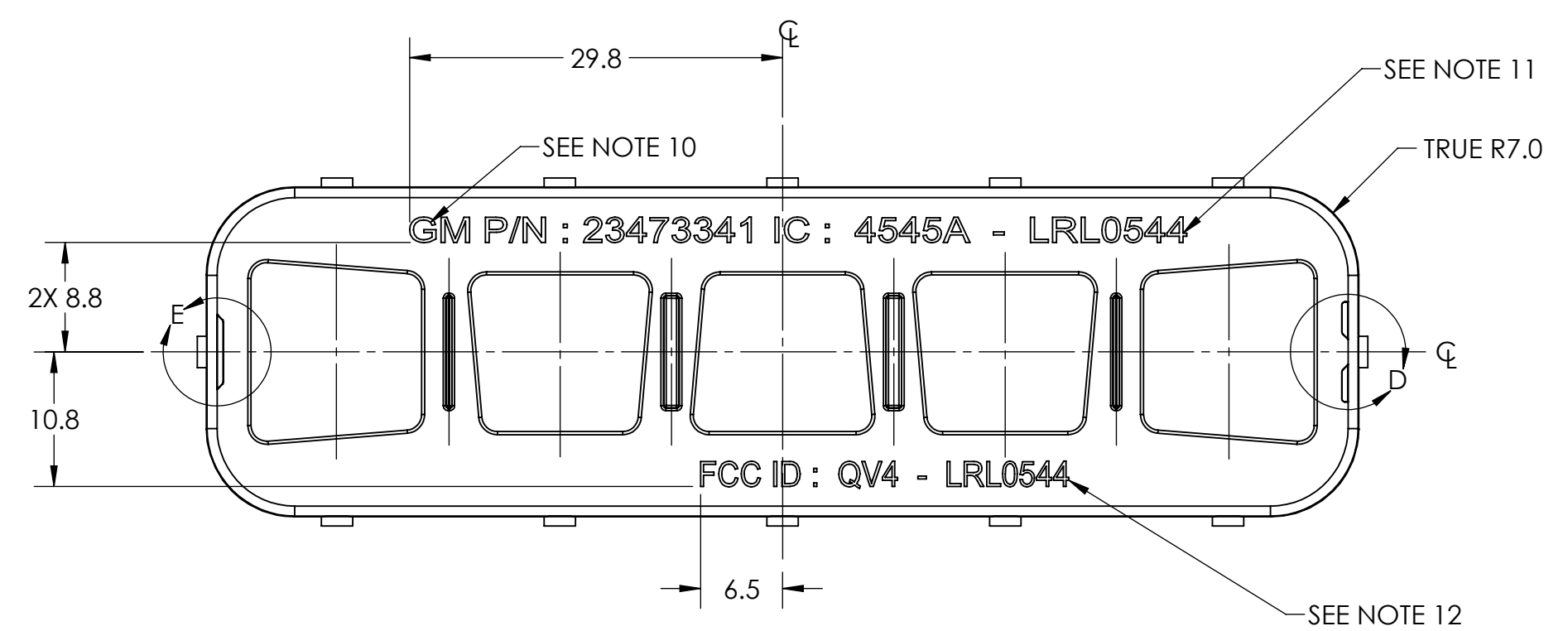
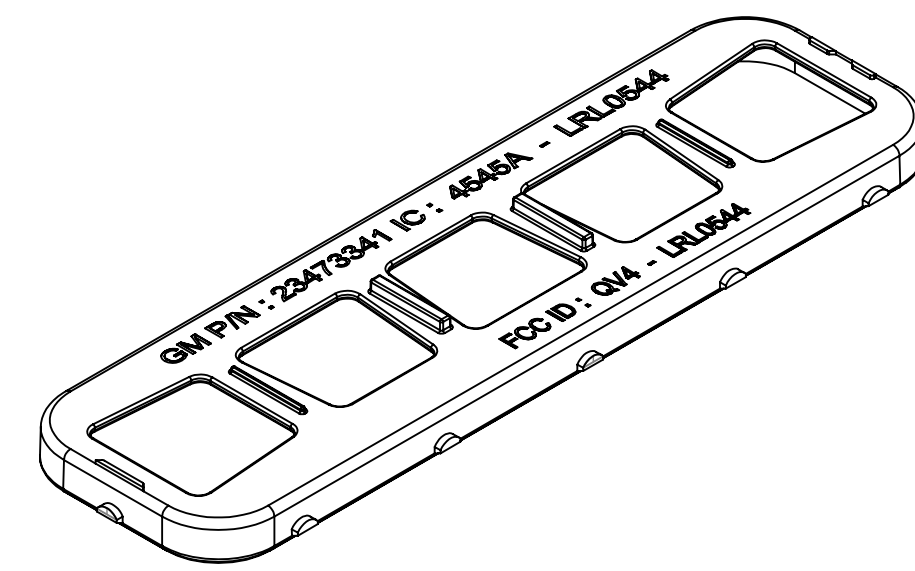


REVISIONS				
REV.	ZONE	DESCRIPTION	DATE	ECO

PRE-RELEASE APPROVAL
 THIS DRAWING CAN BE USED FOR THE FOLLOWING:

- TOOLING DESIGN/PRODUCTION
- PRODUCTION EVALUATION
- QUALITY CONTROL EVALUATION
- PURCHASING- RFQ'S/RFP'S

PRINT NAME: TERRY PRESTEL TITLE: DRE
 SIGNATURE: TERRY PRESTEL DATE: 03/10/2016



- NOTES:
- CAD MODEL IS MASTER.
 - FOR ALL OTHER DIMENSIONS NOT PRESENT, REFER TO CAD MODEL.
 - ALL DIMENSIONS ARE SYMMETRICAL ABOUT CENTERLINE UNLESS OTHERWISE SPECIFIED.
 - DRAFT ANGLE 1° +0.5°/-0.0° MINIMUM WHERE REQUIRED.
 - ALL GENERAL SURFACES $\sqrt{0.40}$ (A)(M)(B)(C)
 - ALL CORNERS TO BE FILLETED R0.3MM UNLESS OTHERWISE SPECIFIED.
 - MATERIAL: BAYER, DB 195D 3159 NATURAL, T85 BBS201/TYP D, (HIGH HEAT, HIGH IMPACT), REGRIND IS NOT PERMISSIBLE.
 - FINISH: KNIT LINES, WELD LINES AND SINK MARK ON ANY SURFACE ARE NOT PERMISSIBLE.
 - COLOR: NATURAL
 - TOOLING INSERT 1: CUSTOMER TOP-LEVEL PART NUMBER: FONT SIZE TO BE 2MM FOR MINIMUM HT AND LOCATED AS SHOWN.
 - TOOLING INSERT 2: IC ID TO BE ISSUED PRIOR TO PRODUCTION, FONT SIZE TO BE 2MM FOR MINIMUM HT AND LOCATED AS SHOWN.
 - TOOLING INSERT 3: FCC ID TO BE ISSUED PRIOR TO PRODUCTION, FONT SIZE TO BE 2MM FOR MINIMUM HT AND LOCATED AS SHOWN.
 - NO PART, PROCESS AND/OR SPECIFICATION CHANGES ARE PERMISSIBLE WITHOUT PRIOR WRITTEN CONSENT OF THE VOXXHIRSCHMANN CORPORATION.
 - WEIGHT= 1.99 GRAMS
 - VOLUME= 1856.12 CUBIC MILLIMETERS

UNLESS OTHERWISE SPECIFIED, DIMENSIONS ARE IN MILLIMETERS DO NOT SCALE	MATERIAL: SEE NOTES	OTHER- SEE NOTES	
THIRD ANGLE PROJECTION	ORIGINATION (RS) NO: PDL 1069	SCALE 2:1	D
TOLERANCES UNLESS OTHERWISE SPECIFIED: X = ± 1 XX = ± 0.5 XXX = ± 0.15 ANGLES = ± 1°	NAME: ABS	DATE: 4/10/2015	DESCRIPTION: RETAINER, (433 MHZ)
BREAK ALL SHARP EDGES AND REMOVE ALL BURRS	CHK: RLB	DATE: 3/11/2016	DWG FILE: LRL054-114
	ENG:		SHEET #: SHEET 1 OF 1



PART #: LRL054-114

REVISIONS: 00-10