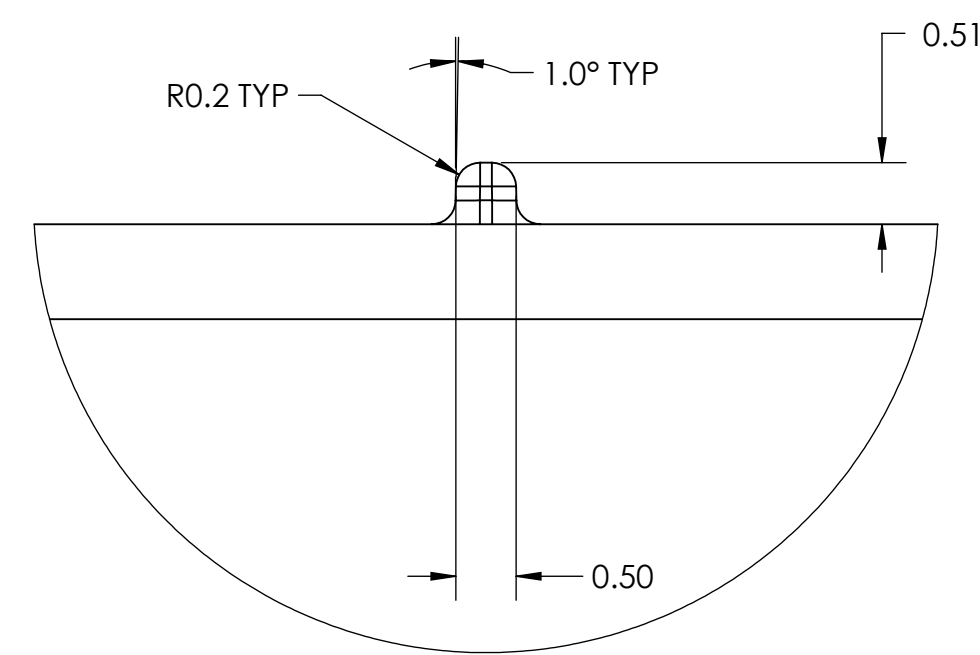
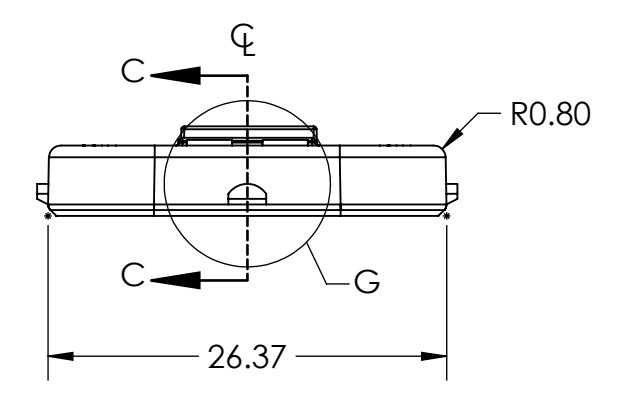
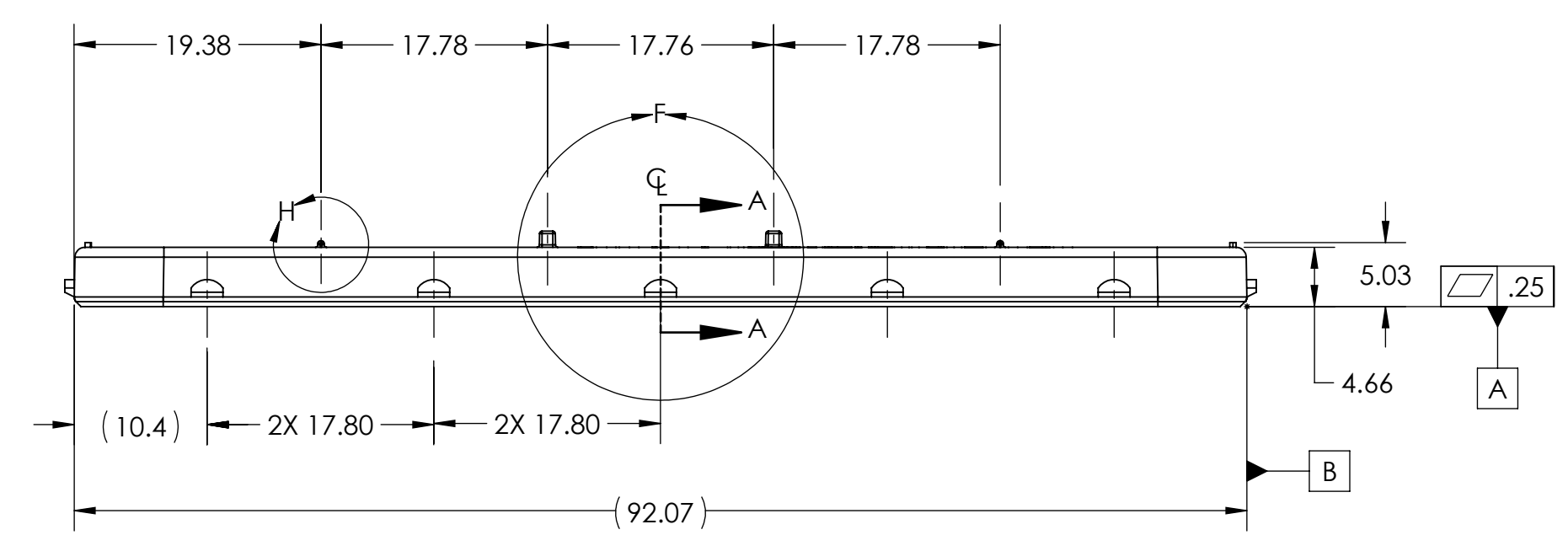
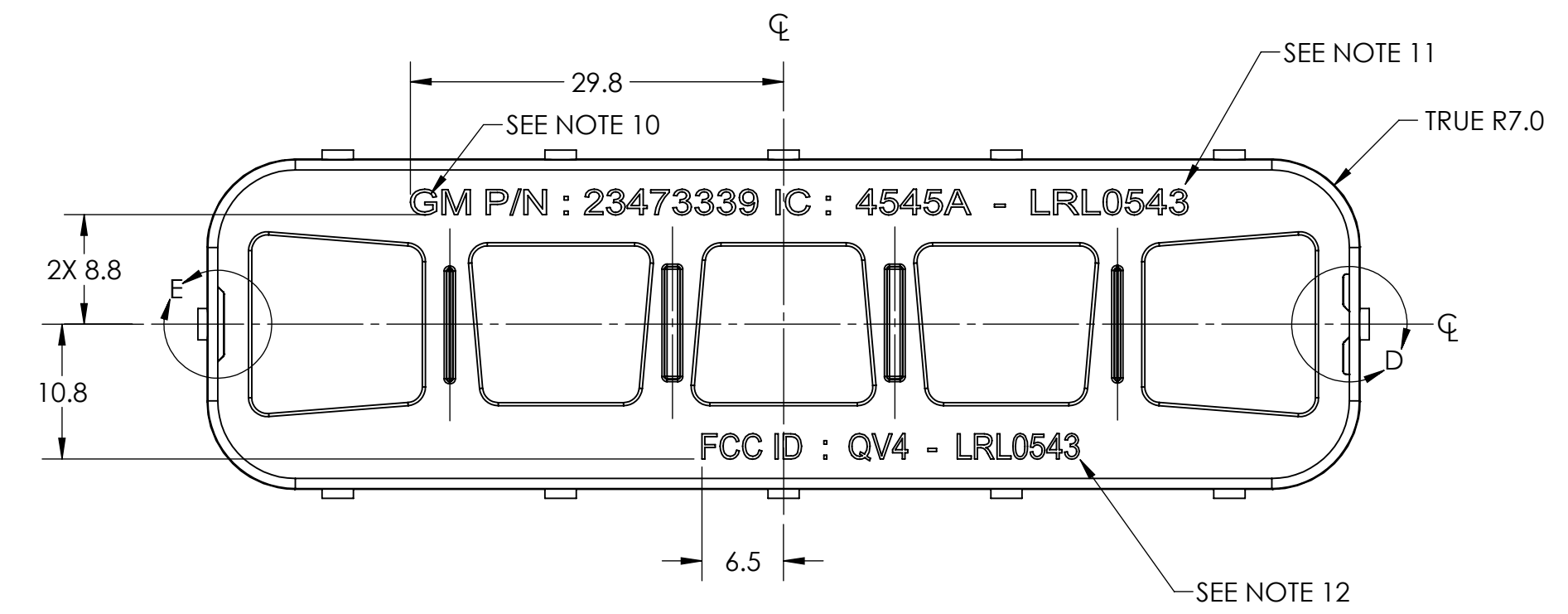
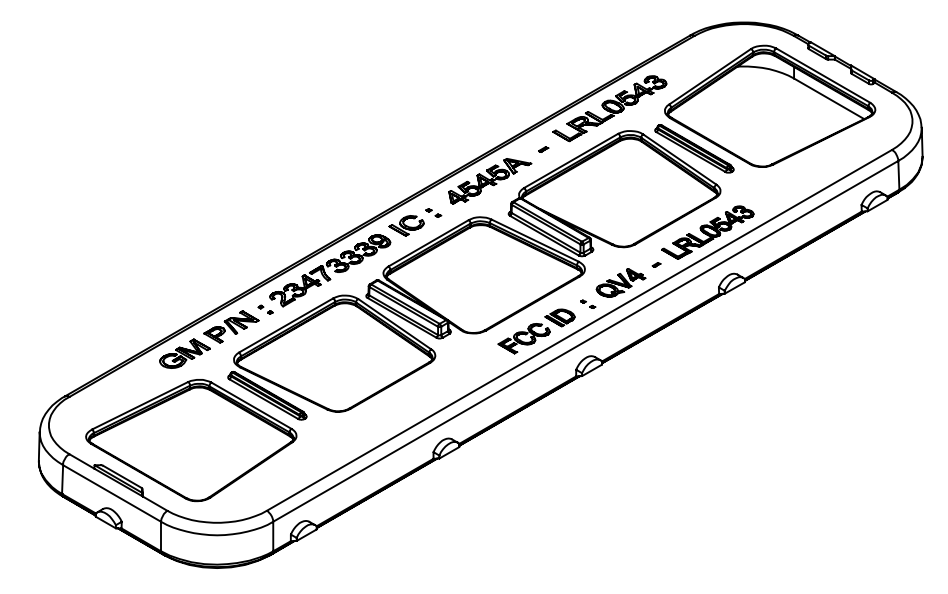


REVISIONS				
REV.	ZONE	DESCRIPTION	DATE	ECO

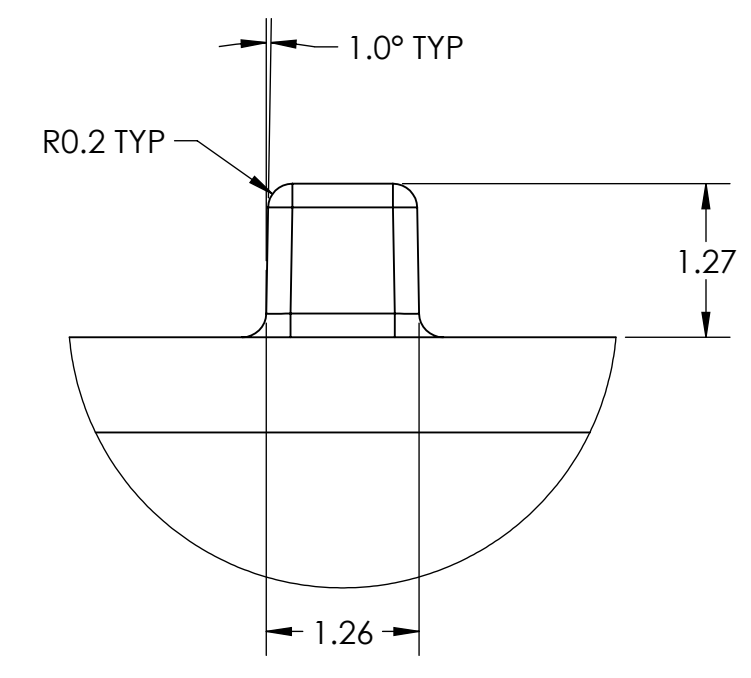
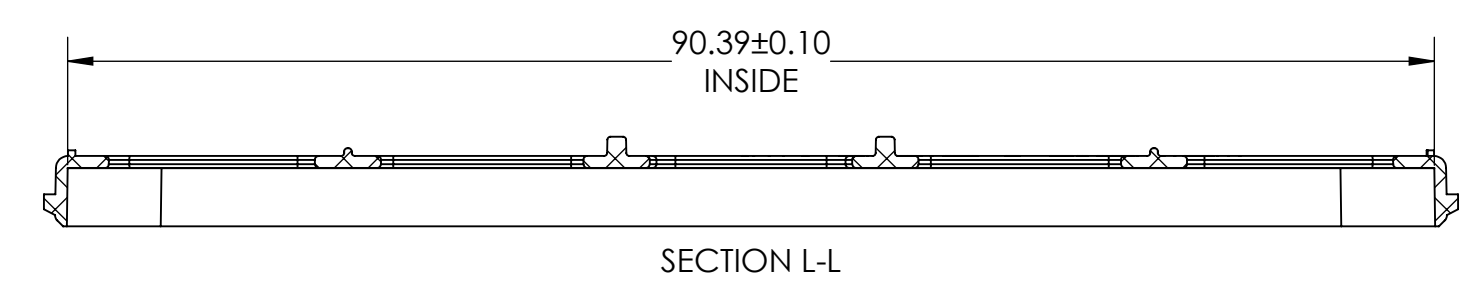
**PRE-RELEASE APPROVAL**  
 THIS DRAWING CAN BE USED FOR THE FOLLOWING:

- TOOLING DESIGN/PRODUCTION
- PRODUCTION EVALUATION
- QUALITY CONTROL EVALUATION
- PURCHASING- RFQ'S/RFP'S

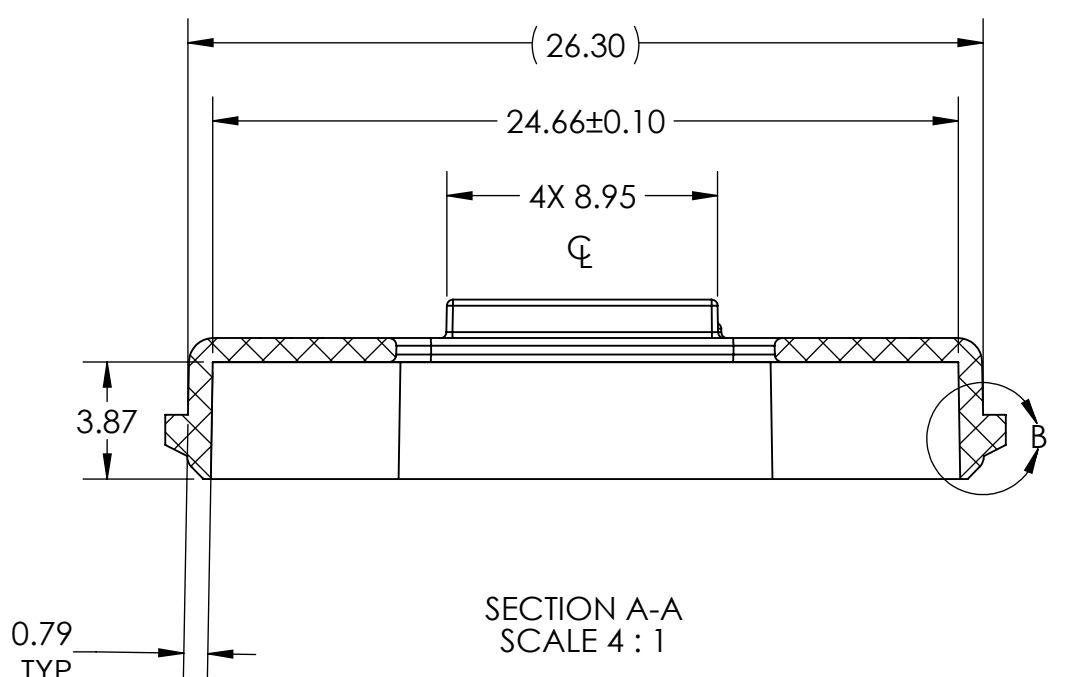
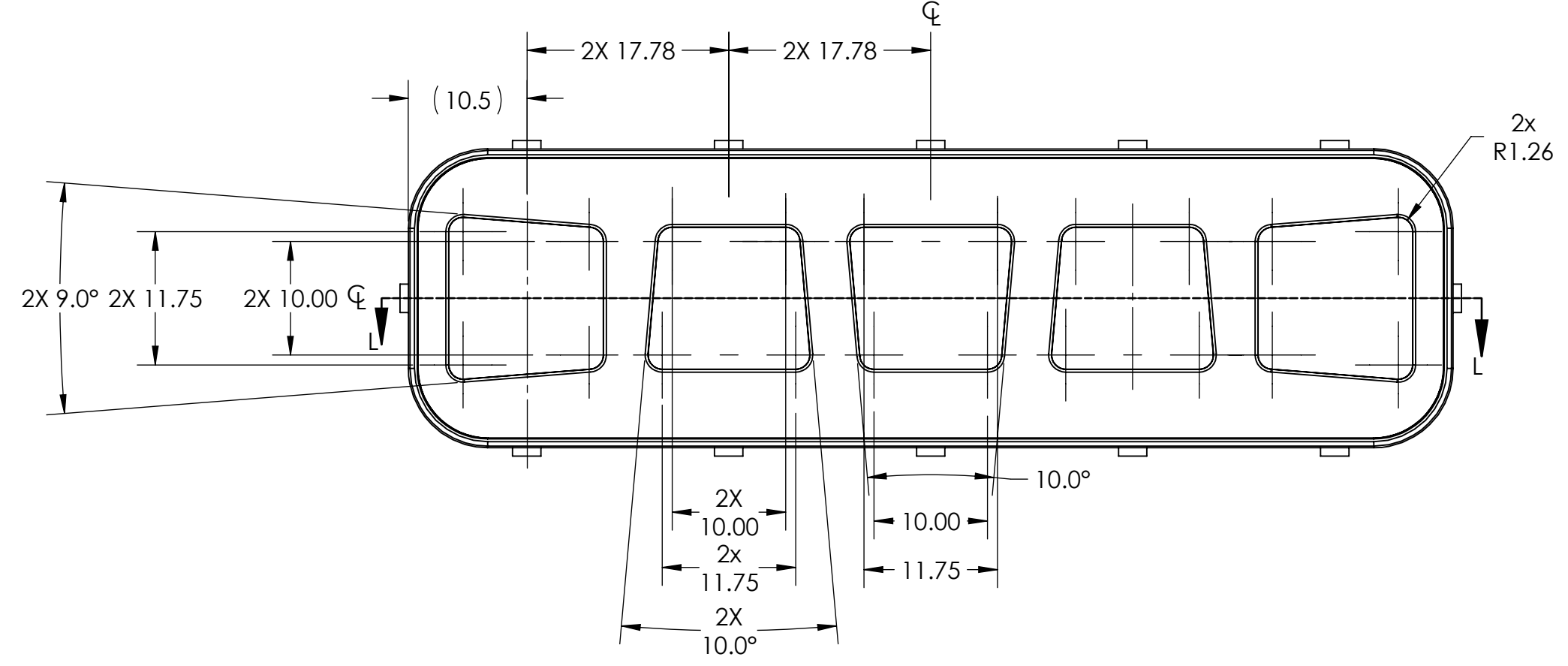
PRINT NAME: TERRY PRESTEL TITLE: DRE  
 SIGNATURE: TERRY PRESTEL DATE: 03/10/2016



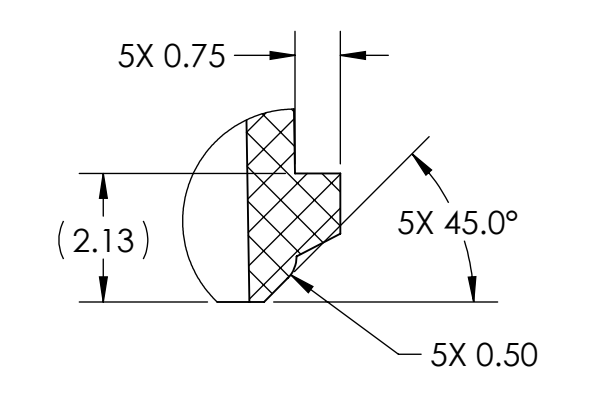
DETAIL H  
SCALE 16 : 1  
2 PLACES



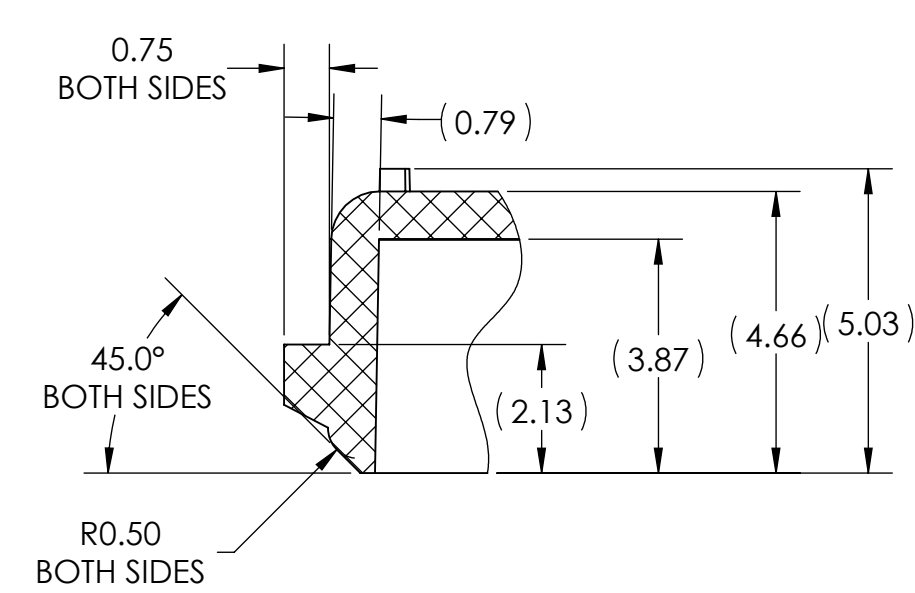
DETAIL J  
SCALE 16 : 1  
2 PLACES



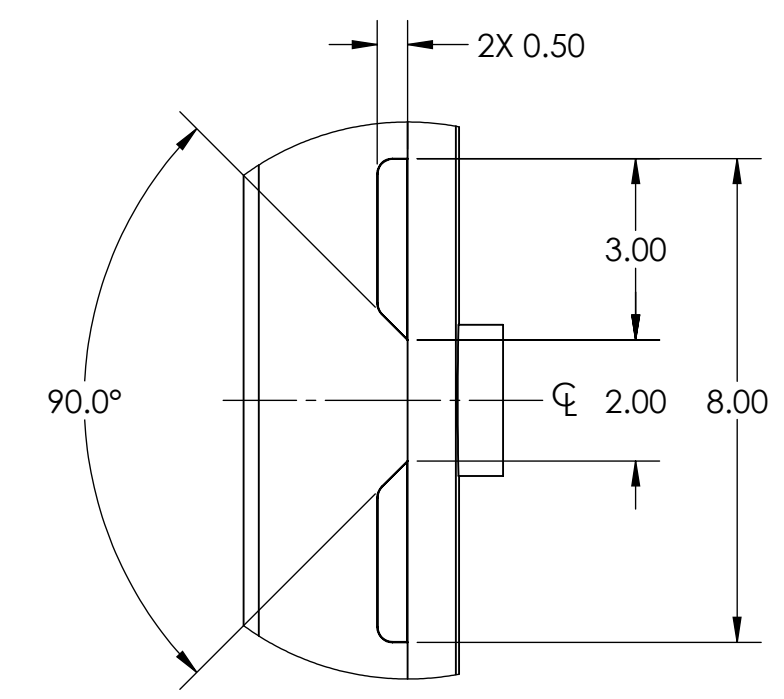
SECTION A-A  
SCALE 4 : 1



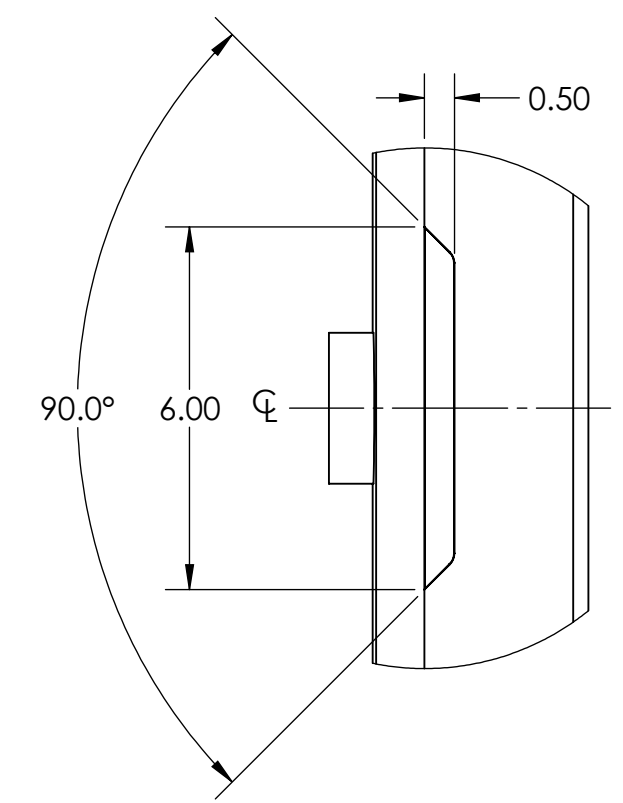
DETAIL B  
SCALE 8 : 1  
(5) PLACES- EACH SIDE



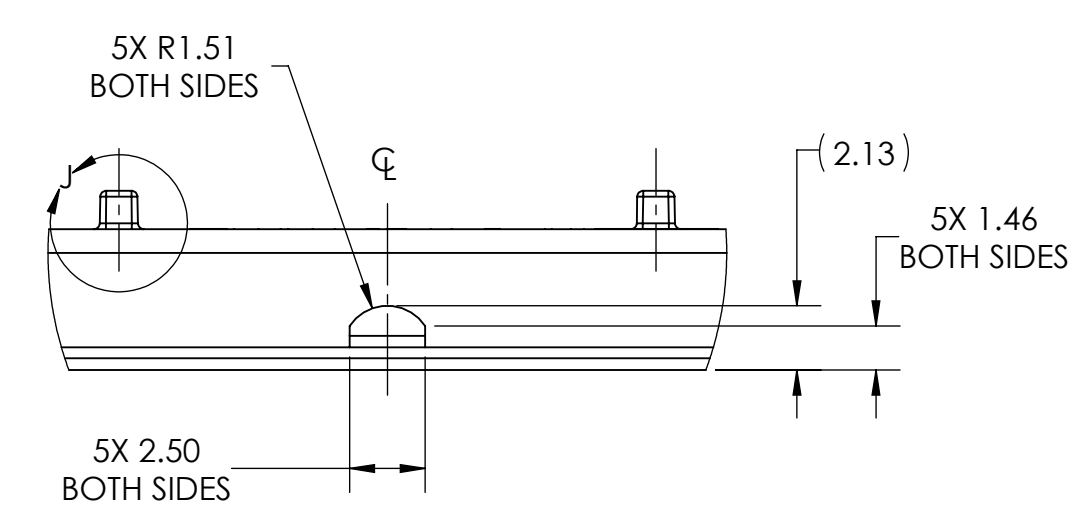
SECTION C-C  
SCALE 8 : 1



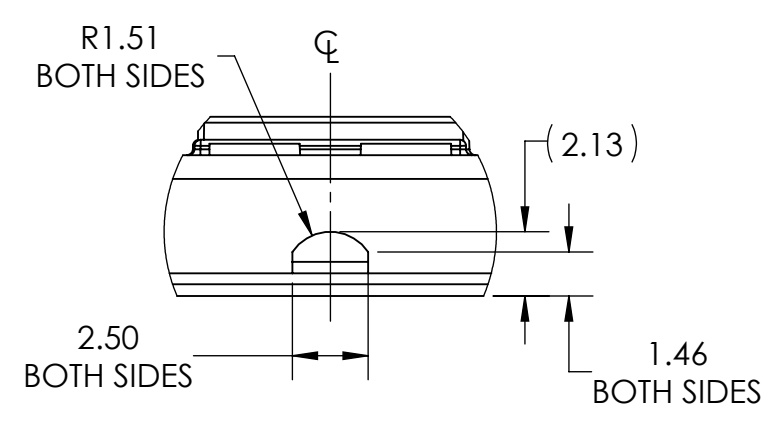
DETAIL D  
SCALE 8 : 1



DETAIL E  
SCALE 8 : 1



DETAIL F  
SCALE 4 : 1



DETAIL G  
SCALE 4 : 1

NOTES:

- CAD MODEL IS MASTER.
- FOR ALL OTHER DIMENSIONS NOT PRESENT, REFER TO CAD MODEL.
- ALL DIMENSIONS ARE SYMMETRICAL ABOUT CENTERLINE UNLESS OTHERWISE SPECIFIED.
- DRAFT ANGLE 1° +0.5°/-0.0° MINIMUM WHERE REQUIRED.
- ALL GENERAL SURFACES  $\sqrt{0.40}$  (A)(M)(B)(C)
- ALL CORNERS TO BE FILLETED R0.3MM UNLESS OTHERWISE SPECIFIED.
- MATERIAL: BAYER, DB 195D 3159 NATURAL, T85 BBS201/TYP D, (HIGH HEAT, HIGH IMPACT), REGRIND IS NOT PERMISSIBLE.
- FINISH: KNIT LINES, WELD LINES AND SINK MARK ON ANY SURFACE ARE NOT PERMISSIBLE.
- COLOR: NATURAL
- TOOLING INSERT 1: CUSTOMER TOP-LEVEL PART NUMBER: FONT SIZE TO BE 2MM FOR MINIMUM HT AND LOCATED AS SHOWN.
- TOOLING INSERT 2: IC ID TO BE ISSUED PRIOR TO PRODUCTION, FONT SIZE TO BE 2MM FOR MINIMUM HT AND LOCATED AS SHOWN.
- TOOLING INSERT 3: FCC ID TO BE ISSUED PRIOR TO PRODUCTION, FONT SIZE TO BE 2MM FOR MINIMUM HT AND LOCATED AS SHOWN.
- NO PART, PROCESS AND/OR SPECIFICATION CHANGES ARE PERMISSIBLE WITHOUT PRIOR WRITTEN CONSENT OF THE VOXXHIRSCHMANN CORPORATION.
- WEIGHT= 1.99 GRAMS
- VOLUME= 1856.12 CUBIC MILLIMETERS

UNLESS OTHERWISE SPECIFIED, DIMENSIONS ARE IN MILLIMETERS DO NOT SCALE	MATERIAL:	SEE NOTES	PART #:	LRL054-105	
	FINISH:	OTHER- SEE NOTES			
THIRD ANGLE PROJECTION	ORIGINATION IRS NO:	PDL 1069	DESCRIPTION:	RETAINER, SILICONE MEMBRANE- (314 MHZ)	
TOLERANCES UNLESS OTHERWISE SPECIFIED: X = ± 1 XX = ± 0.15 XXX = ± 0.15 ANGLES = ± 1°	SCALE 2:1	D	DWG FILE:	LRL054-105	
	DRW	ABS	DATE	4/10/2015	
	CHK	RLB	3/11/2016	SHEET #:	SHEET 1 OF 1
	ENG			REV	00-16

