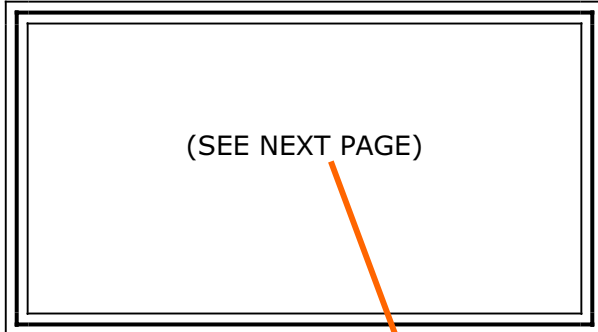


## FCC ID SAMPLE LABEL & LOCATION

---

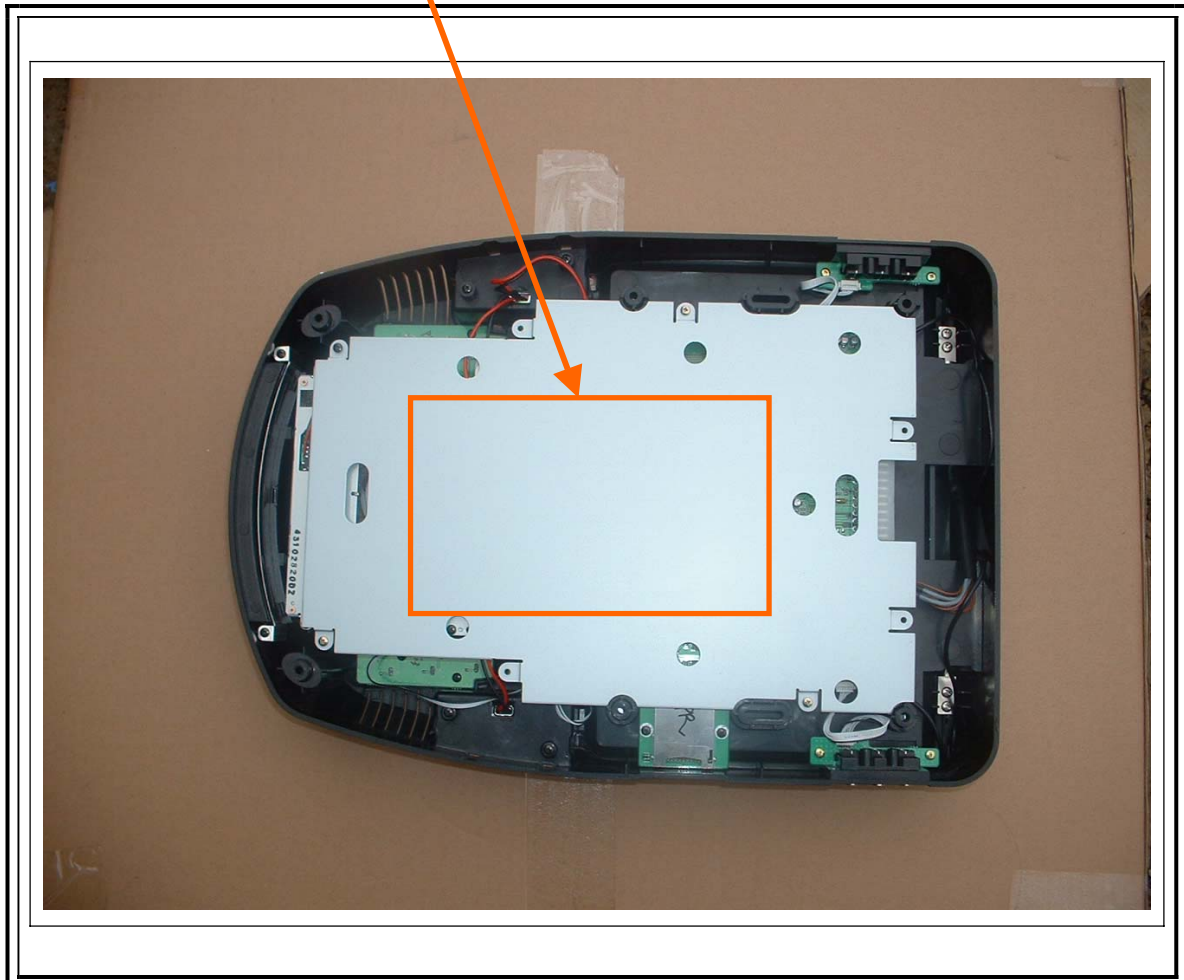
**MODEL NAME: HT-DB390**



### **LABELLING REQUIREMENTS**

#### **PER §2.925**

The Label shown shall be permanently affixed at a conspicuous location on the device and be readily visible to the user at the time of purchase



**FCC ID: QV3DA200TFDS**

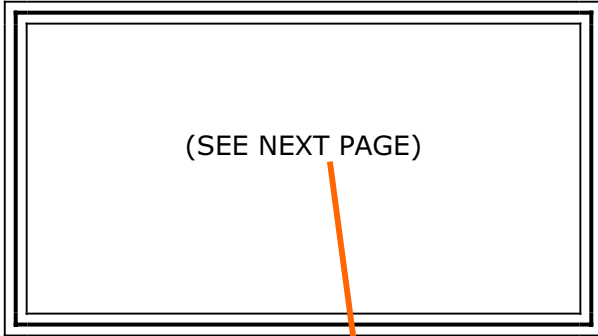
**FCC ID: QV3DA200TFDS**

**Model No.: DA-200**

This device complies with Part 15 of the FCC Rules. Operation is subject to the following two conditions: (1) this device may not cause harmful interference, and (2) this device must accept any interference received, including interference that may cause undesired operation.

---

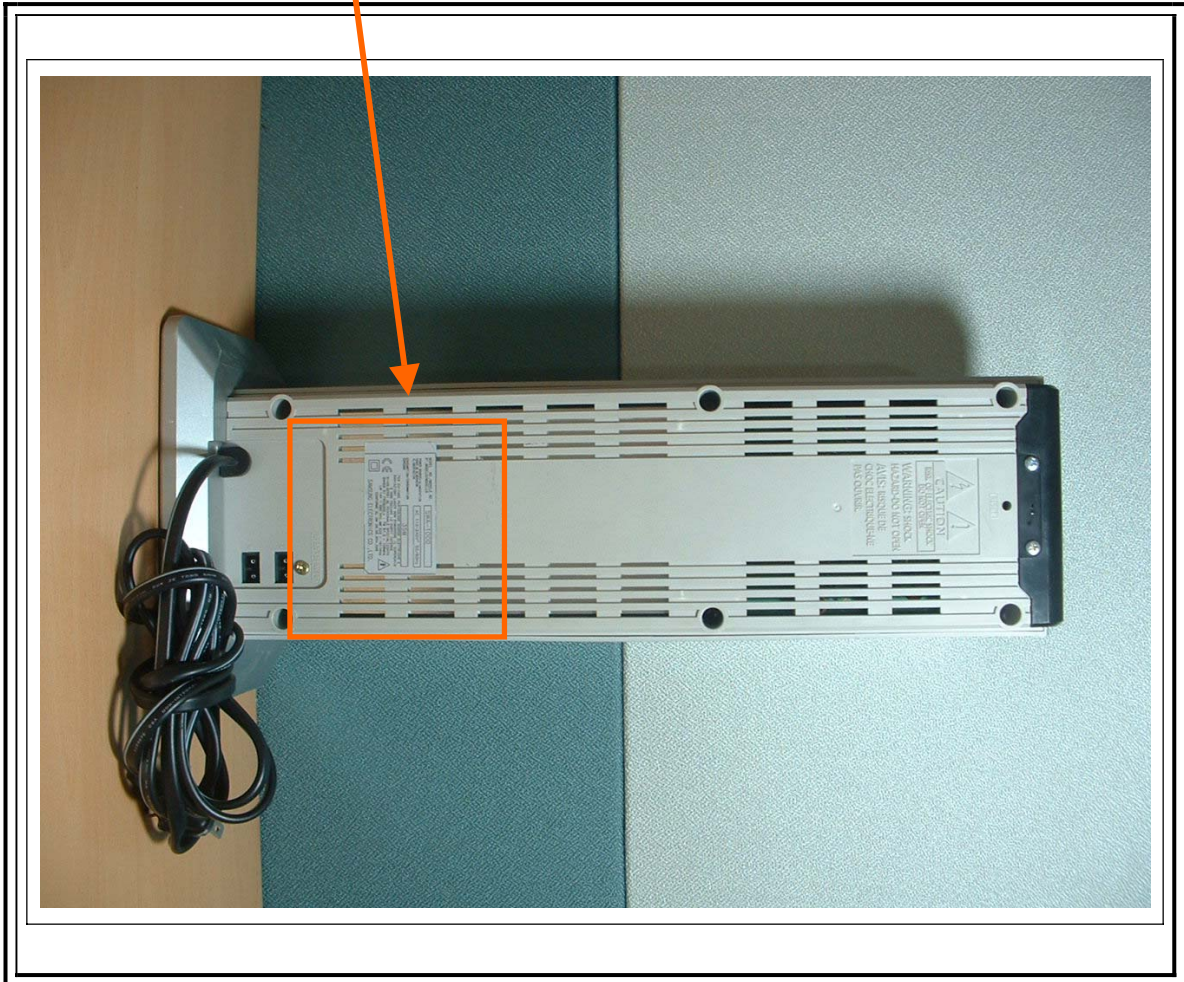
**MODEL NAME: SWA-1000**



**LABELLING REQUIREMENTS**

**PER §2.925**

The Label shown shall be permanently affixed at a conspicuous location on the device and be readily visible to the user at the time of purchase



**FCC ID: A3LHTDB390**

**Model No.: SWA-1000**

This device complies with Part 15 of the FCC Rules. Operation is subject to the following two conditions: (1) this device may not cause harmful interference, and (2) this device must accept any interference received, including interference that may cause undesired operation.