

# OWNER'S MANUAL

---



## FCC

This device complies with part 15 of FCC Rules. Operation is subject to the following two conditions: (1) This device may not cause harmful interference (2) this device must accept any interference received, including interference that may cause undesired operation.

**Caution** : Any changes or modifications in construction of this device which are not expressly approved by the party responsible for compliance could void the authority to operate the equipment

**Note** : This equipment has been tested and found to comply with the limits for a Class B digital device, pursuant to part 15 of the FCC Rules. These limits are designed to provide reasonable protection against harmful interference in a residential installation. This equipment generates, uses and can radiate radio frequency energy and, if not installed and used in accordance with the instruction, may cause harmful interference to radio communications. However, there is no guarantee that interference will not occur in a particular installation. If this equipment does cause harmful interference to radio or television reception, which can be determined by turning the equipment off and on, the user is encouraged to try to correct the interference by one or more of the following measures:

- Reorient or relocate the receiving antenna.
- Increase the separation between the equipment and receiver.
- Connect the equipment into an outlet on a circuit, different from that to which the Receiver is connected.
- Consult the dealer or an experienced TV technician for help.

|          |               |
|----------|---------------|
| CLASS 1  | LASER PRODUCT |
| KLASSE 1 | LASER PRODUKT |
| LUOKAN 1 | LASER LAITE   |
| KLASS 1  | LASER APPARAT |

### WARNING

To reduce the risk of fire or shock hazard, do not expose this DVD player to rain or moisture.

### CAUTION

This product utilizes laser. Use of controls or adjustments or performance of procedures other than those specified herein may result in hazardous radiation exposure. Do not open cover and do not repair yourself. Refer servicing to qualified Personnel.

# Contents



- Precaution ..... 3
- Check point before operating..... 5
- General Features ..... 7
- Identifications of controls ..... 8
  - Changing AV Source Signal ..... 13
  - Adjusting Volume Control ..... 13
- Playing Disc ..... 14
- Set up ..... 21
- Controlling Monitor Function ..... 27
- Components ..... 30
- Products Standards ..... 31

### **1. Do not remove the cover.**

To reduce the risk of electric shock and keep the quality of product, please do not remove the cover.

Please follow up by the instruction on the wiring Diagram of the Installation Guide.

### **2. Keep small articles out of the reach of children.**

Store small articles (screws etc.) in places not accessible to children.

If swallowed, consult physician immediately.

### **3. Stop using immediately if a problem appears.**

When problems appear, stop using the system immediately and contact the dealer from whom you purchased the equipment. Some problems which may warrant immediate attention include a lack of sound, noxious smoke being emitted from the unit, or foreign objects dropped inside the unit

### **4. Do not operate the equipment while driving.**

Do not change setting while driving. If operation requiring a prolonged view of the display is required, stop the vehicle in a safe Location before attempting operation.

### **5. Do not insert 3.5 Inch Disc.**

3.5 Inch disc will may not be used.

### **6. Do not use this equipment outside vehicle.**

Do not use this equipment for purposes other than those listed for a vehicle Failure to do so may result in an electric shock or an injury.

### **7. Keep foreign objects out of the Monitor compartment.**

Keep foreign objects out of the monitor compartment. Also, avoid placing your hands in the area where it might interfere with the monitor's operation.

## Precaution

---

### 8. Stop the vehicle before carrying out any operation that could interfere with your driving

If the operation of the unit (such as opening or closing of the monitor, etc.) interferes with your driving, stop the vehicle in a safe location before attempting operation.

### 9. Temperature

Be sure the temperature inside the vehicle is between  $+60^{\circ}\text{C}$  ( $+140^{\circ}\text{F}$ ) and  $-0^{\circ}\text{C}$  ( $+32^{\circ}\text{F}$ ) before turning your unit on.

### 10. Maintenance

If you have problems, do not attempt to repair the unit by yourself. Return it to your purchasing dealer.

## Check point before operating

### 1. Turning On or Off

1. Pushing the OPEN switch forward will release the TFT-LCD monitor and it will drop down slightly.  
Pull the monitor downward until a comfortable viewing angle is reached.  
The internal friction will hold the screen in position while the system is in use.
2. Press the POWER button on the unit or the remote control will turn the system on or off alternately.  
When in use the internal backlighting will illuminate the controls.
3. After the unit has been turned on and is displayed in a picture, adjust the viewing angle by pivoting the screen to optimize the picture quality.
4. Remember to turn the unit off and pivot the LCD to the locked position when not in use.

### 2. Dome Lights Operation

1. The lights are controlled by a three position slide switch.
2. Sliding the switch to the ON position will turn the lights on.
3. The OFF position will prevent the lights from turning on at all times,
4. The AUTO position will allow the lights to turn on and off with the vehicle's interior lighting.

**Note** : Refer to the Installation Manual for the wire connections.

Do not leave the vehicle unattended with the dome light switch in the ON position, as this could result in a discharged battery.

### 3. Connect Additional AV Input

1. The Audio/Video inputs may be connected to Audio/Video device directly or through a Junction Box which can connect to a Video Cassette Recorder(VCR), Video game system, or other Audio/Video devices.

## Check point before operating

### 2. AUX Video Input (Additional)

The unit will accept an audio/video input through the RCA jacks located on the side of the unit.

The audio/video device could be a video game system, video Cassette Recorder(VCR), or other input device.

## 4. Regional Code

1. Both the DVD player and disc are coded by region.
2. These regional code number must match in order for the disc to play.
3. This unit's code number is **region number 1**. Other regional codes cannot be played in this unit.

If not, the unit will display "Invalid Region."

### 4. Types of Discs your DVD will play

DVD disc - DVD disc which contain video.

Audio disc - Audio CD contain musical or sound content only.

MP3 disc - A disc that contain audio files(for example, a CD-R with downloaded MP3 files).

VCD disc - VCD disc which contain video.

## 5. FM Transmitter Mode(Optional)

1. If this unit has FM Transmitter function, please adjust the FM frequency to hear.
2. For details, please refer to page 29.

## General Features

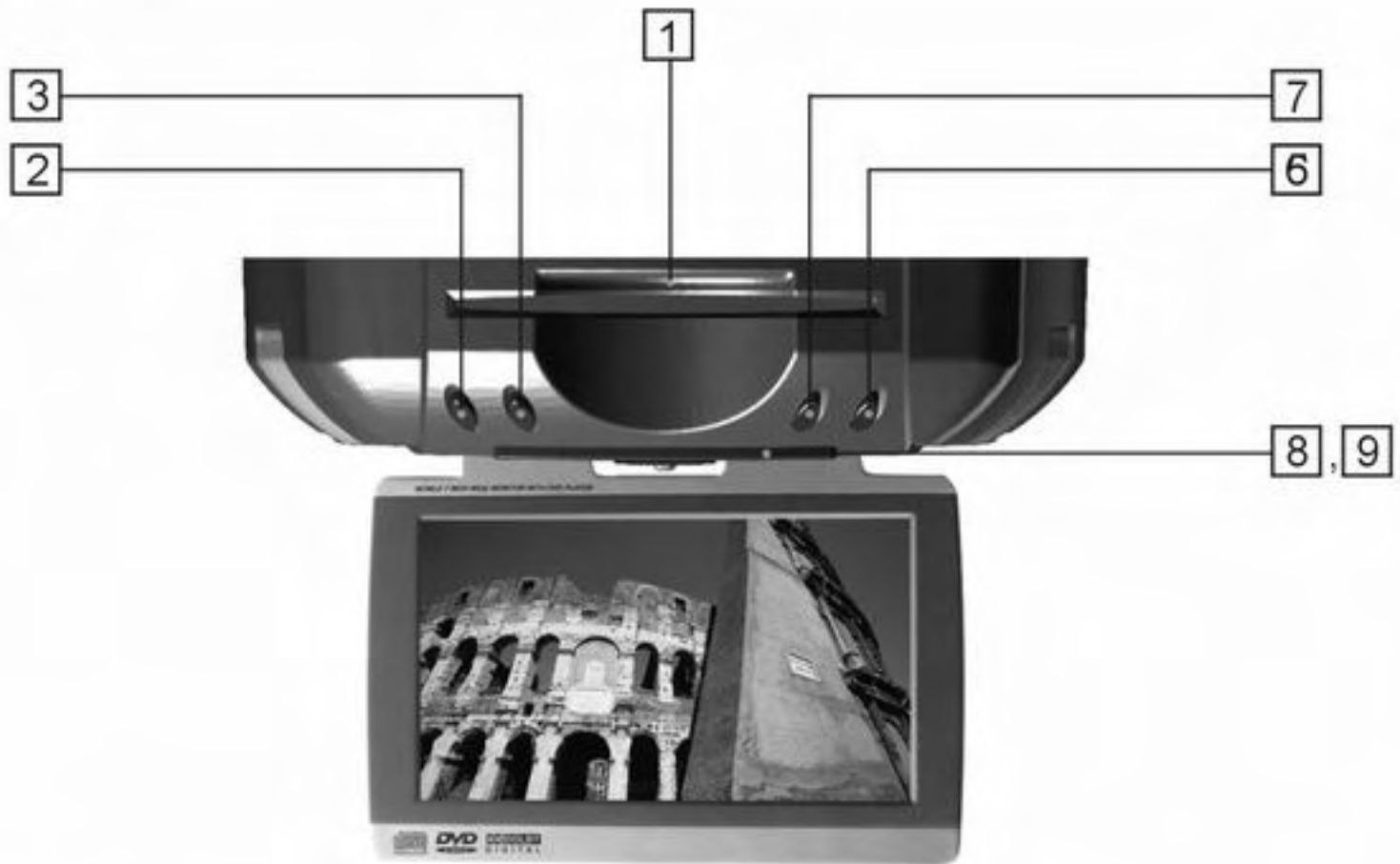
---

1. Slot Mechanism type DVD Deck
2. Flip Down type 7 Inch TFT-LCD Monitor (Wide Screen)
3. Full Function Remote Control
4. FM Transmitter with remote control and OSD (Optional)
5. Infrared Transmitter for IR Wireless Headphones
6. Two Audio/Video Inputs
7. Remote Sensor
8. Dome Lights with Switch(On/Off/Auto)
9. FM Modulator Jack for connection
10. OSD for Control of DVD and Monitor Functions
11. FM Modulator(Optional)



# Identifications of controls

- Main Unit  
Picture



## Identifications of controls

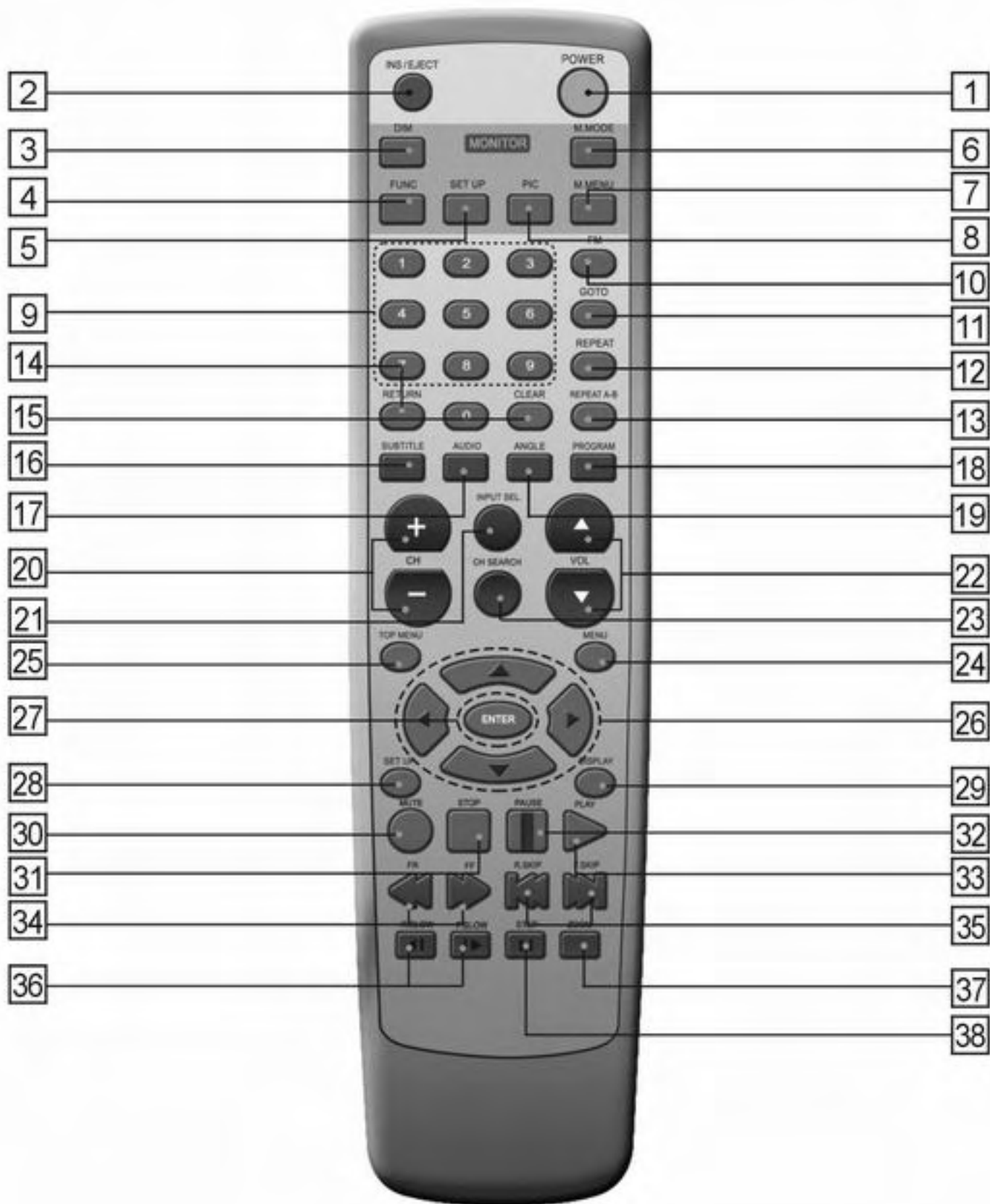
---

- Main Unit

1. DVD disc INSERT SLOT.
2. POWER Button
3. PLAY Button.
4. Dome Lights - provide additional Interior illumination.
5. Auxiliary A Input.
6. EJECT Button.
7. STOP Button.
8. Side Remote Sensor Eye
  - Allows the remote control to operate and control other accessories in the system.
9. Infrared Transmitter and Sensor
  - Used to transmit audio to wireless headphones.
10. Three position Dome Light Switch.
  - Auto -The dome lights will turn on automatically in this position.
  - Off - The dome lights will not turn on in this position.
  - On - Turns on the dome lights.
11. Open Switch -Moves in direction of the arrow to release the drop down screen.
12. Flip Down LCD Panel.

# Identifications of controls

- Remote Controller



## Identifications of controls

1. POWER On/Of Button
2. INSERT/EJECT Button

### ● Monitor Part

3. DIMMER Button
4. FUNCTION Button
5. SET UP Button
6. MONITOR MODE Button
7. MONITOR MENU Button
8. PICTURE Button

### ● DVD part

9. NUMBER Buttons
10. FM TRANSMITTER Button
11. GOTO Button
12. REPEAT Button
13. REPEAT A-B Button
14. RETURN Button
15. CLEAR Button
16. SUBTITLE Button
17. AUDIO Button
18. PROGRAM Button
19. ANGLE Button
20. CHANNEL UP/DOWN Buttons
21. INPUT SELECT Button
22. VOLUME CONTROL Button
23. CHANNEL SEARCH Button
24. MENU Button
25. TOP MENU Button
26. DIRECTION KEY Button  
(UP/DOWN/LEFT/RIGHT Buttons)
27. ENTER Key Button
28. SET UP Button
29. DISPLAY Button
30. MUTE Button
31. STOP Button
32. PAUSE Button
33. PLAY Button
34. SEARCH Buttons (FF/FR)
35. SKIP Buttons (R.SKIP/F.SKIP)
36. SLOW Button (R.SLOW/F.SLOW)
37. ZOOM Button
38. STEP Button

## Identifications of controls

---

- Remote Controller

### **BATTERY INSTALLATION**

Before attempting to operate your Remote Controller. Install the batteries as described below.

- 1) Turn the Remote Control face down. and remove battery cover by lifting tab.
- 2) Install two "AAA" batteries. Make sure that proper polarity (+ or -) is observed.
- 3) Align the cover tabs with the remote control and press down until the cover clicks.

### **If the remote controller doesn't operate properly:**

1. Check the polarity + / - of the batteries.(Dry-Cell)
2. Check if the batteries are drained.
3. Check if remote sensor is blocked by obstacles.
4. Check if there is any fluorescent lighting near by.

## Changing A/V Source Signal

1. Press **INPUT SEL** button.
2. The desired A/V source signal will be changed as follows ;  
DVD → AUX 1 → AUX 2 → DVD



## Adjusting Volume Control

1. Press VOL **UP (+)** / **DOWN (-)** button.
2. Adjust Volume using **UP (+)** / **DOWN (-)** button.

**Note** : DVD Only mode

## Playing Disc


### Before Load and Play

- Before you load a disc, make sure that it is compatible with the player.

**Note** : the following Discs CANNOT be used with this player :

3.5 Inches Disc, CD-ROM, CD-I, DVD-ROM

### Before using Remote Controller

- If  icon appears, it indicates an invalid press . Please wait.

### Loading and Play

1. Press the POWER button. the unit will turn on and display the source selected when the disc was loaded.
2. Insert the disc(Label Up) into the disc compartment.  
When the disc is half way in, it will be automatically pulled in and play will begin.

### Stopping Play

- During Play, press the STOP button.

### Removing Disc

- Press INS/EJECT button.

### Step Motion Play (Except CD / MP3)

- During play, press the STEP button
  - Each time the button pressed, the new frame will appear.
  - Press the STEP button continuously, the step motion play will be done.
  - To resume normal play, Press the PLAY button.

### Slow Motion Play (Except CD / MP3 / VCD)

- During play, press the F.SLOW button, the play will be done forward slowly 1/8X, 1/4X, and 1/2X of normal.
- During play, press the R.SLOW button, the play will be done forward slowly 1/8X, 1/4X, and 1/2X of normal.

**Note** : After playing the last of track, the unit will be in STOP mode.

### Skipping Tracks

#### 1. DVD Mode

- When playing a DVD, if you press the F.SKIP (▶▶|) button, it moves to next chapter.
  - In last chapter, it does not move.
- If you press the R.SKIP (|◀◀) button, it moves to the previous chapter.

#### 2. VCD, CD Mode

- When playing VCD 2.0 in Menu Off mode, VCD 1.1 or CD,
  - If you press the F. SKIP (▶▶|) button, it moves to next track.
  - Dose not move when on the LAST TRACK.
- If you press the R. SKIP (|◀◀) button, it moves to the beginning of the track.
  - It does not move when on the first track.

#### 3. MP3 Mode

- When playing a MP3 disc, if you press the F.SKIP (▶▶|) button, it moves to next song.
- If you press the R.SKIP (|◀◀) button, it moves to the previous song.
  - Moves to Beginning when on the first track.

#### Note

- This unit can recognize Max. 8 characters of English.
- MP3 titles in other language are not recognized.
- When making MP3 disc, please reduce label name within Max. 8 characters of English.



# Playing Disc

## Searching through a chapter or Track

During play, you can search quickly through a chapter or track using the skip function to jump to the next selection.

### 1. DVD Mode

- Press the FF (▶▶) or FR (◀◀) button on the remote and press again to search at faster speed.(2X / 4X / 8X / 32X of normal speed.)
- To resume normal play, Press the PLAY button.

### 2. CD / VCD Mode

- Press the FF (▶▶) or FR (◀◀) button on the remote and press again to search at faster speed.
  - \* VCD(2X / 4X / 8X / 16X of normal speed.)
  - \* CD(2X / 4X / 8X of normal speed.)
- To resume normal play, Press the PLAY button.

### 3. MP3 Mode

- Not available.

## Program Play

### • CD-DA

1. In Stop Mode, when press PROGRAM Button, Program Menu appears.
2. Press the appropriate track number using Number Buttons and press ENTER button.  
Continuously press the appropriate numbers using Number Button, press ENTER button.
3. Press PLAY Button. Then Program Play will be started.

### • MP3

1. In Stop Mode, when press PROGRAM Button, Program Menu appears upside MP3 Menu.
2. Select the appropriate track numbers, using the LEFT(◀)/RIGHT(▶) or UP(▲)/DOWN(▼) buttons. Press the ENTER button.  
Continuously press the appropriate numbers using Number Button, press ENTER button.

### • Clear Program Play

1. In Stop Mode, when press PROGRAM Button, Program menu appears.
2. Press Program Button once again. Then Program Play will be cleared.

## Repeat Play

Repeat the current track, chapter, title, or a chosen section (A-B).

- When playing a DVD



Chapter Repeat On

1. Press the REPEAT button on the remote. Repeat screen appears.
2. Select Chapter Repeat On, Title Repeat On, Repeat Off pressing REPEAT button..
3. To return to normal play, select Repeat Off pressing REPEAT button again.

- A-B Repeat

- Press REPEAT A-B button at the point where you want the repeat play to start(A).
- Press REPEAT A-B button at the point where you want the repeat play to stop(B).
- A chosen section ( A-B) will be repeated.
- To return to normal play, press REPEAT A-B button again, to select Off.



Repeat A-B (A)



Repeat A-B (B)



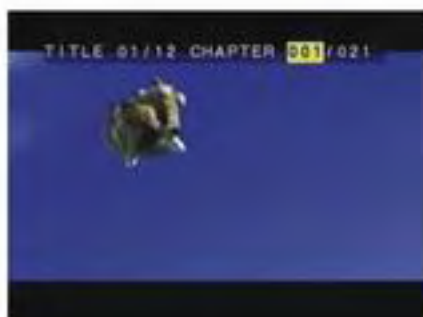
Repeat A-B Cancel

### Note

- DVD repeats play by chapter or title, CD and VCD repeat play by disc or track.
- Depending on the disc, the Repeat function may not work.
- If the title or track is completed before marking the end(B), the end of title or track becomes B automatically.
- When in VCD 2.0 model(MENU ON mode), this function does not work.

# Playing Disc

## Direct Play



- DVD Mode

- Press the GOTO button, the Direct Play screen appears.
- Select Title/Chapter/Time pressing GOTO Button, enter the numbers of Title/Chapter/Time which you want.
- Press ENTER button. PLAY begins at selected Title/Chapter/Time.

- VCD Mode

- When press the GOTO button, GoTo screen appears.
- Enter the numbers of Time which you want. Press ENTER button.
- Then PLAY begins at selected Track.

- MP3 Mode

- During play, MP3 screen appears.
- Select the numbers of Track which you want using the LEFT (◀) / RIGHT(▶) or UP (▲) / DOWN (▼) buttons.
- Press ENTER button.
- Continuously press the appropriate numbers using Number Button, press ENTER button.

## Zoom Play (Using the Zoom Functions)

- DVD/VCD Mode

1. During play or pause mode, press the ZOOM button on the remote.
2. When press the ZOOM button first time, ZOOM 1.5x appears on the left top of Monitor.
3. Press the ZOOM button on the remote again, ZOOM 2x and ZOOM 3x appears on the left top of Monitor.
- 4 To resume normal play, Press the ZOOM button. ZOOM Off appears on the left top of Monitor.

### Using the Display Function

- When Playing a DVD
  1. During play, press the Display button on the remote.
    - Current title, chapter number and elapsed time will be displayed.  
Title, Chapter & Running Time → Title Remain → Chapter Elapsed → Chapter Remain
    - To make the screen disappear, press the DISPLAY button till the screen will show None.
  
- When Playing a VCD
  1. During play, press the Display button on the remote.
    - Current elapsed, remain time will be displayed.  
Elapsed → Remain → Off
    - To make the screen disappear, press the DISPLAY button till the screen will show OFF.
  
- When Playing a CD
  1. During play, press the Display button on the remote.
    - Current elapsed, remain, total elapsed and total remain time will be displayed pressing DISPLAY button.  
elapsed → remain → total elapsed → total remain → off

### Note

- What is a chapter?  
Each title on a DVD is usually divided into chapters(similar to tracks on an audio CD).
- What is a Title?  
A DVD may contain several different titles. For example, if a disc contains four different movies, each might be considered a title.

### Using the Subtitle Function

- When Playing a DVD
  1. During play, press the SUBTITLE button on the remote, the Subtitle screen appears.
  2. Select the desired language using the SUBTITLE button again.

# Playing Disc

## Using the Audio Function

- When Playing a DVD
  1. During play, press the AUDIO button on the remote, the Audio screen appears.
  2. Select the desired Audio type using the AUDIO button again.

**Note** : If the selected audio function does not work with this unit, please select other audio function.

## Using the Menu Function

- When Playing DVD / VCD
  1. During play, press the TOP MENU or MENU button on the remote.
    - Accoting to disc, TOP MENU or MENU button will work.
  2. Select the desired item in Menu using the LEFT (◀) / RIGHT (▶) or UP(▲) / DOWN (▼) buttons.
  3. Press enter button Then PLAY begins.

## Using the Setup Function

- Using the setup function, you can do the initial setup, adjust the picture and sound quality, and set the various outputs.
- You can also set a language for the subtitles and limit play back by children.

### Note

- You can display the setup display only when the player is in stop mode.
- Depending on the disc.

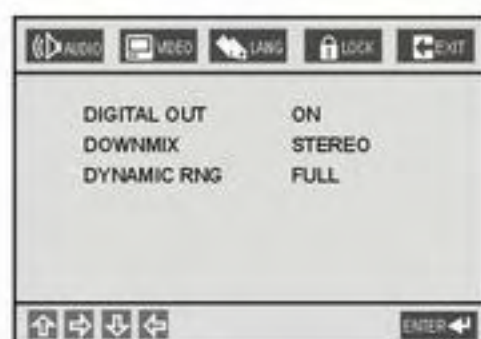
## To cancel Using the Setup Display

- Press the SET UP button on the remote.
- Press the ENTER button after moving the cursor to EXIT menu in Screen.

## To Move to the Other Menu

- Using the Direction Button, move to the desired items or list in Main menu or sub-menu.

## Using the Setup Display



Set up screen

1. With the unit in Stop mode, press the SETUP button on the remote, the SETUP menu appears.
2. Using the Direction button, select  
AUDIO  
VIDEO  
LANG(Language)  
LOCK  
EXIT in Main Menu
3. To return to the previous menu, using LEFT(◀) / RIGHT(▶) or UP(▲) / DOWN(▼) buttons.

# Set Up

## Setting Up the Audio Options

1. Press the SETUP button on the remote.
2. Select the AUDIO in Main Menu using the LEFT(◀) / RIGHT(▶) buttons.
3. Select the desired item in sub-menu using the UP(▲) / DOWN(▼) buttons.

Then the desired item's color will be changed.



Audio Menu / Digital out

### 1) Digital Output

1. OFF
2. ON : Converts to Dolby Digital Bitstream(5.1CH).  
Select ON when using the Digital, Audio Output.

**Note** : Be sure select the correct Digital Output or audio will be not heard.



Audio Menu / Down Mix

### 2) DOWN MIX

1. LT/RT : Left/Right Speaker only.
2. STEREO :
3. OFF :

### 3) DYNAMIC RNG

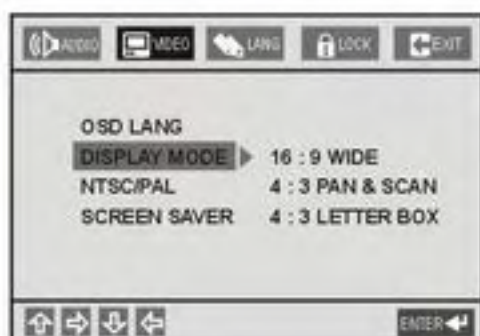
1. FULL :
2. 7/8~1/8 :
3. OFF :

4. Move to lists in sub-menu using the RIGHT(▶) buttons. Select the desired item in list using ENTER button.

## Setting Up the Video Options

Depending on the type of television you have, you may want to adjust the screen setting.

1. Press the SETUP button on the remote.
2. Select the VIDEO in Main Menu using the LEFT(◀) / RIGHT(▶) buttons.



Video Menu / TV Type

- 1) OSD LANG : Select the desired Language in Screen
- 2) DISPLAY MODE :

16:9 WIDE :

You can view the full 16:9 picture on your wide screen TV

4:3 PAN & SCAN :

Select this for converting size TVs when you want to see the central portion of 16:9 screen (Extreme left and right side of movie picture will be cut off.)

4:3 LETTER BOX :

Select when you want to see the total 16:9 ratio screen DVD supplies, even though you have a TV with 4:3 ratio screen.

3) NTSC/PAL

NTSC

PAL

AUTO : Depending on the actual DVD Video discs, select AUTO(NTSC or PAL)

4) SCREEN SAVER

ON

OFF

3. Move to lists in sub-menu using the RIGHT(▶) buttons. Select the desired item in list using ENTER button. Then the color of the item will be changed.

- Depending on the DVD, 4:3 LETTER BOX may be selected automatically instead of 4:3 PAN & SCAN and vice versa.



# Set Up

## Setting Up the Language Options

1. Press the SETUP button on the remote.
2. Select the LANG in Main Menu using the LEFT(◀) / RIGHT(▶) buttons.
3. Select the desired item in sub-menu using the UP(▲) / DOWN(▼) buttons.



### 1) Audio : Setup of the Audio Language

Use the Audio preference menu to select the soundtrack language.

### 2) Subtitle : Setup of the Subtitle Language

Use the Subtitle preference menu to select the language the disc's subtitles are to be displayed in.

### 3) Disc : Setup of the Menu Language

use the Menu preference menu to select the language you want a DVD's disc menu to be displayed

**Note** : If the selected language is not recorded on the disc, the original pre-recorded language is selected.

## Setting Up the Locking Options

1. Pushing the SETUP button on the remote.
2. Select the LOCK in Main Menu using the LEFT(◀) / RIGHT(▶) buttons.
3. Select the desired item in sub-menu using the UP(▲) / DOWN(▼) buttons.



### 1) Parental : Setup of the Parental Level

Allows users to set the level necessary to prevent children from viewing unsuitable movies

### 2) Password

4. Move to the list in sub-menu using the RIGHT(▶) button.  
Select the desired item in list using ENTER button. Then the color of the item will be changed.

## Setting Up the Display Options

1. With the unit in Stop mode, press the SET UP button.
2. Select the Display Options Menu using the UP(▲) / DOWN (▼) buttons, press ENTER button.
3. Select the desired item using the UP(▲) / DOWN (▼) buttons.  
Then press ENTER button.

### 1) TV Aspect

Depending on the type of television you have, you may want to adjust the screen setting (aspect ratio)



#### ① 4:3 Pan-Scan:

Select this for conventional size TVs when you want to see the central portion of the 16:9 screen (Extreme left and right side of movie picture will be cut off.)

#### ② 4:3 Letter Box:

Select when you want to see the total 16:9 ratio screen DVD supplies, even through you have a TV with a 4:3 ratio screen.

Black bars will appear at the top and bottom of the screen.

#### ③ 16:9 Wide:

You can view the full 16:9 picture on your wide screen TV.

### Note

- How to make the SET UP MENU disappear or return to menu screen during set up, Press RETURN button.

# Set Up

---

## System Settings

### 2) TV Output

#### ①NTSC:

You can select the system for your TV

#### ②PAL:

#### ③Auto:

Depending on the actual DVD Video discs, we advise select Auto and adjust your TV on Auto or NTSC.

### Note

- Depending on the DVD, 4:3 LETTER BOX may be selected automatically instead of 4:3 PAN SCAN and vice versa.

# Controlling Monitor Function

## MENU Mode

1. Press the M.MENU Button, the MENU Screen appears.
2. Select the desired mode using the UP(▲) / DOWN(▼) Button.
3. Press the M.MENU Button again MENU Mode will be quit. OSD is display during ten seconds.
4. PICTURE Mode, FUNCTION Mode and SET UP Mode are in MENU Mode.

## PICTURE Mode

### • NTSC Mode



1. Press PIC Button, the PICTURE Screen appears.
2. Select the desired mode using the UP(▲) / DOWN(▼) Button.
3. Control each mode by using LEFT(◀) / RIGHT(▶) Button
4. Control each mode from 0 to 50 by using LEFT(◀) / RIGHT(▶) Button.  
When push Preset mode, each mode will be set[25].
5. Press M.MENU Button, user can PICTURE Mode will be quit.
6. Bright, Contrast, Color, Tint and Preset Control function are in PICTURE Mode.
  - BRIGHT : It's Bright control. 0 to 50 control possible.
  - CONTRAST : It's Brightness control. 0 to 50 control possible
  - COLOR : It's Shade control. 0 to 50 control possible.
  - TINT : It's Tint control. 0 to 50 control possible.

**Note** : COLOR and Tint Control is not active in DVD Mode.

### • PAL Mode



1. Pull out TINT Mode from NTSC Mode.

# Controlling Monitor Function

## Changing Viewing Mode(Function)



1. Press FUNC Button, FUNCTION Screen appears.
2. Select the Use desired mode using the UP(▲) / DOWN(▼) Button.
3. Change the viewing mode or Dimmer function by using the LEFT(◀) / RIGHT(▶) Button.
4. Press M.MENU Button, FUNCTION Mode will be quit.
5. WIDE Mode and DIMMER Mode are in FUNCTION Mode.
  - WIDE Mode selects the FULL Mode or the NORMAL Mode.  
WIDE Mode is 16:9 screen size.  
NORMAL Mode is 4:3 screen size.
  - DIMMER Mode selects the present bright or 50% Bright of [25].  
DIMMER OFF → Present Bright.  
DIMMER ON → 50% Bright of [25].

## Changing (NTSC, PAL Mode) : Set up Mode



1. Press SET UP Button, SET UP screen appears. .
2. Control Picture mode using the LEFT(◀) / RIGHT(▶) Button.
3. PICTURE MODE is NTSC and PAL.
4. Press M.MENU Button, FUNCTION Mode will be quit.

# Controlling Monitor Function

## FM TRANSMITTER Mode



1. Press FM Button, FM TRANSMITTER screen appears.
2. Select each mode using UP(▲) / DOWN(▼) button.  
(Frequency or Antenna)
3. Control each mode using the LEFT(◀) / RIGHT(▶) button.

4. FM frequency fixing

|     |      |      |      |      |      |      |      |      |
|-----|------|------|------|------|------|------|------|------|
| OFF | 88.1 | 88.3 | 88.5 | 88.7 | 88.9 | 89.1 | 89.3 | 89.5 |
|-----|------|------|------|------|------|------|------|------|

5. Antenna : ON → The Wire Transmission(FM Modulator)  
OFF → The Wireless Transmission  
(FM Transmitter)

### Note

- NO Input Video Signal Case : "Mobile Multimedia" is display on screen.

## FM TRANSMITTER

- Frequency and Antenna control function are in FM TRANSMITTER.
- ANTENNA control is the wire transmission and the wireless transmission.
- FM modulator optional.

### Note

- NTSC format PAL format are same all control function.

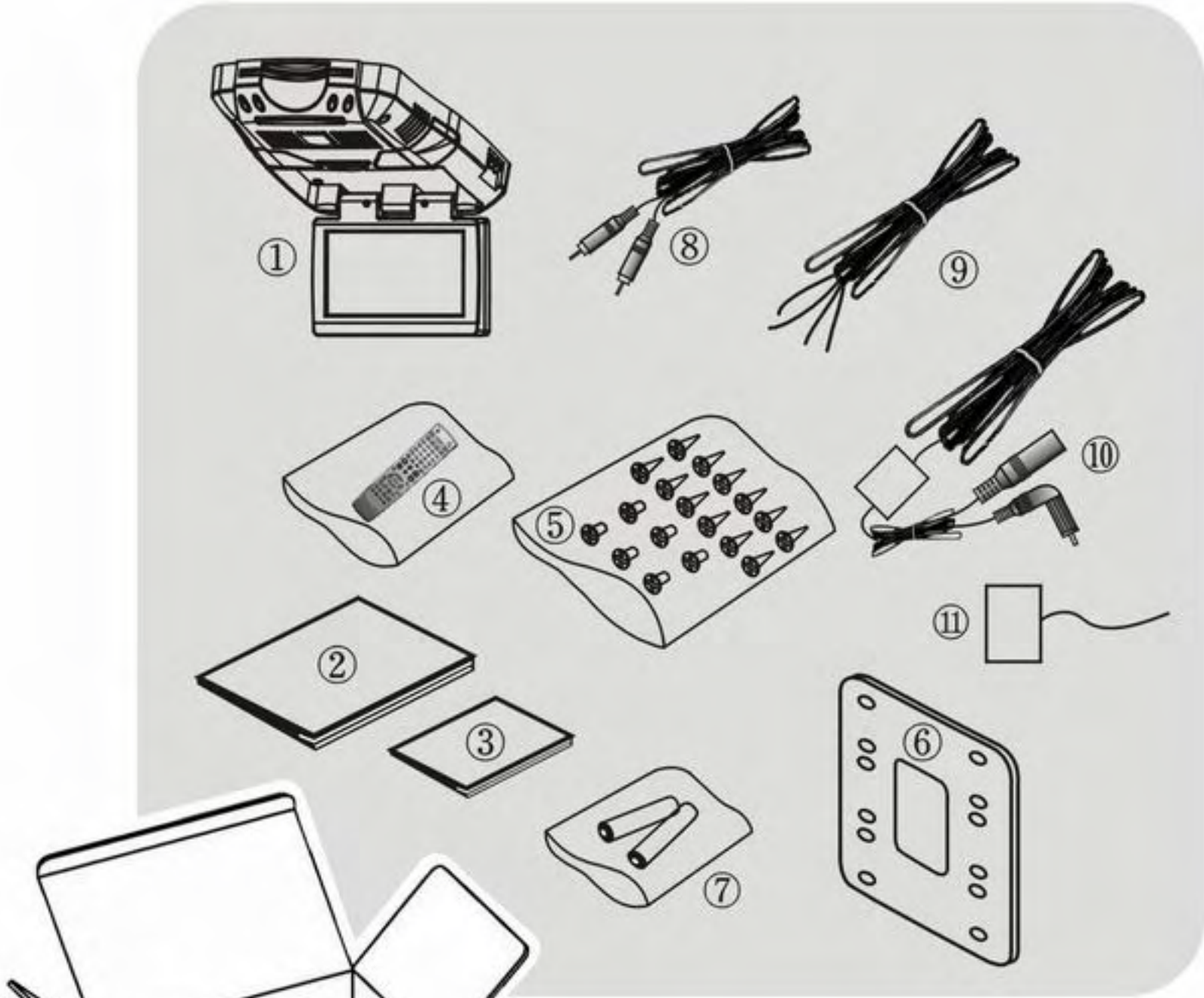
## Using Dimmer Function

- When you press the DIM button, the brightness of monitor will be dark

### Note

- This function is used for you to control the brightness of the monitor.

# Components



|                          |       |    |
|--------------------------|-------|----|
| ① MONITOR                | ----- | 1  |
| ② OWNER'S MANUAL         | ----- | 1  |
| ③ INSTALLATION GUIDE     | ----- | 1  |
| ④ REMOTE CONT. UNIT      | ----- | 1  |
| ⑤ INSTALLATION KIT       |       |    |
| & SCR M4 × 14            | ----- | 12 |
| & SCR M4 × 18            | ----- | 6  |
| ⑥ MOUNTING BRACKET       | ----- | 1  |
| ⑦ BATTERY                | ----- | 2  |
| ⑧ ASSY RCA COAXIAL CABLE | ----- | 1  |
| ⑨ ASSY POWER CABLE       | ----- | 1  |
| ⑩ FM MODULATOR(OPTIONAL) | ----- | 1  |
| ⑪ FM TRANSMITTER ANTENNA | ----- | 1  |
| (1P ANTENNA, WHITE)      |       |    |

## Products Standards

| Item              | Features             |
|-------------------|----------------------|
| Power Consumption | MAX30Watts           |
| LCD Dimension(mm) | 154.08(W) X 86.58(H) |
| Resolution(dot)   | 1,440(W) X 234(H)    |
| Screen Size(inch) | 7.0(Diagonal)        |
| Dot Pitch(mm)     | 0.107(W) X 0.370(H)  |
| Viewing Angle     | 90°(H),60°(V)        |
| Signal Mode       | NTSC/PAL             |
| Power Source      | DC 11~16V            |



Manufactured under license from Dolby Laboratories.

"Dolby" and the double-D symbol are trademarks of Dolby Laboratories.



---

**Printed in Korea**

M3514159010

---