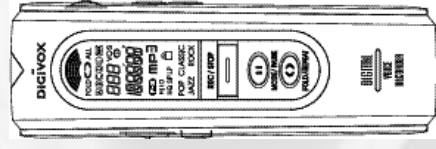


Appendix C - User's Manual

USER'S GUIDE

Model No. DVJ-1033704J-1004

DIGI VOX Digital Voice Recorder





Contents

Features	3
Locations of Function and Control Buttons	5
LCD Description	6
Battery Installation	7
Battery Life Time	7
Power On & Off	8
Recording	9
Playback	11
Erasing	13
Adjusting Volume	14
Message Transfer between folders	15
Hold Function	16
Setting the Record Mode	16
Setting the VOS Mode	17
Setting Mic Sensitivity	18

Contents

Repeating the Playback	19
Setting Beep On/Off Function	20
Setting Hearing-aid Function	21
Setting Preengaged Recording	22
Setting Alarm Function	23
Connecting External Equipments (Optional)	24
Phone Recording (Optional)	26
Voice Manager Program Installation	28
Using Voice Manager Program	32
Troubleshooting	36
Cautions	37
Specifications	39
FCC Note	40
Guarantee	42



Features

LCD Backlight

LCD is designed to backlight for about 3 seconds when pressing any button so that user can easily see the display where it is dark.

Time Pre-set Recording

Presetting of recording-start time within 4 hours.

Time Pre-set Playback

Presetting of playback-start time within 4 hours for the message at 01 of A folder.

4 different message folders and an additional lock folder A/B/C/D folders and 1 lock(L) folder are provided for message management.

Each folder accommodates 99 messages in maximum.

Recording quality modes

- HQ : High Quality Play mode - The shortest recording time.
- SP : Standard Play mode.
- LP : Low Play mode - The longest recording time.

Automatic Power Off

The unit will be automatically turned off when not in use.

Monitoring of the remaining recording time

You can check the remaining recording time by pressing FOLD/REPEAT button during recording.

Repeat modes

- ALL repeat : repeats all recorded messages of all folders.
- FOLD repeat : repeats all recorded messages of the current folder.

User can define the certain repeat section of a message by pressing FOLD/REPEAT button during playback.

Features

Monitoring of recording

User can listen to the message being recorded by using the provided earphone.

External jack for Input(MIC)/Output(EAR)

User can record songs or messages by directly connecting the jack of MIC/EAR to input/output of other equipment i.e. the stereo radio or cassette player.

VOS recording

On VOS ON mode, the recorder automatically stops recording unless it hears any sound around.

Scan Search

Helps user to find a certain recorded message by playback the beginning part of each message.

Pause

Enables to pause during recording/playback by pressing MODE/PAUSE button.

USB PC interface

User can save recorded messages on his PC through the provided USB cable. Also, user can use the flash memory of the recorder as USB disk for general data files of PC.

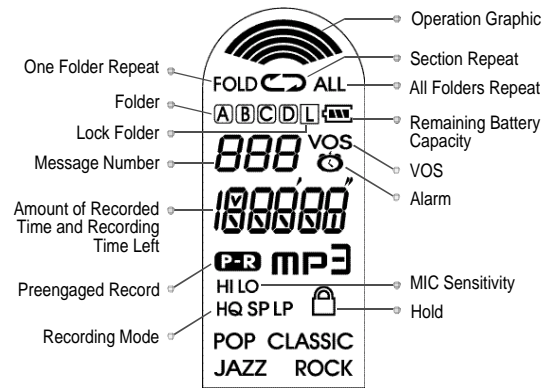
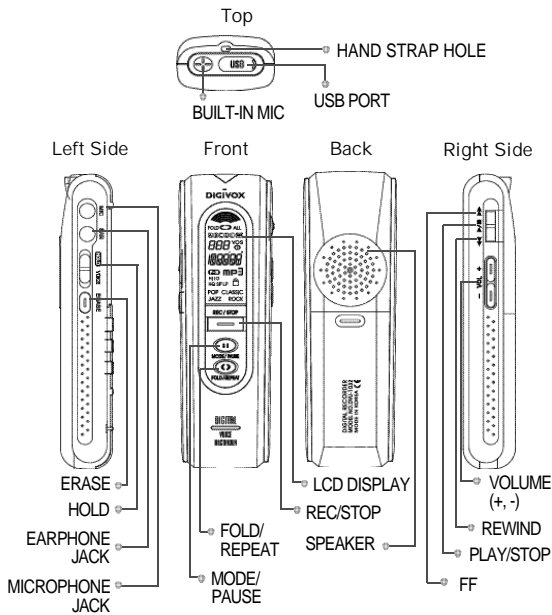
Hearing-Aid

User can use the recorder as a hearing aid through the earphone to listen to weak or delicate sounds.



Locations of Function and Control Buttons

LCD Description





Battery Installation

Be sure to replace batteries at stop mode.

1. Open the battery cover.
Press and slide the battery cover off.
2. Install two(2) AAA size batteries and slide the cover back into place.
Battery should be LR03 or equivalent (AAA Size or UM-4)
3. Press REC/STOP button to check the battery condition.
Recorded messages will not be erased when replacing batteries.

Battery Life time

Recording Mode	About 10 Hours
Speaker playback	About 8 Hours(VOL: 5)
Earphone playback	About 9 Hours(VOL: 5)

1 Power On & Off

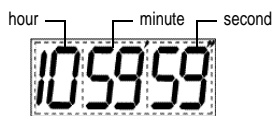
- 1) Set the HOLD switch to "Off" mode and press the REC/STOP button for more than one second.
Then, LCD is displayed, which means power on.
- 2) Automatic power off : the unit will be automatically turned off within one minute when not in use without pressing any button.



2 Recording

- 1) Release the HOLD switch and press the REC/STOP button for recording.
- 2) The unit starts recording when the red LED lights ON.
(The unit displays the recording number, level and time on the LCD.)

Recording Time Indicator on the LCD



- 3) To stop recording, press the REC/STOP button again.

Pause function

Press the MODE/PAUSE button during recording.

The "PAUSE" letter blinks on LCD, which means pause function is being operated.

To release the pause function, press the MODE/PAUSE button again.

To record on the following number during recording

During recording, move the button upwards and then, you can continue to record on the following number.

Indication of the remaining recording time

If you press the FOLD/REPEAT button during recording, the LCD indicates the remaining time.

Monitoring of recording

You can listen to the recorded messages by connecting earphone to EAR jack during recording.

(During monitoring, the volume level can not be controlled.)

Using an external pin microphone (Optional)

Record by connecting an external microphone to MIC jack for higher quality recording.



3 Playback

- 1) Release the HOLD button and select your desired message number by moving the upwards() or downwards() buttons on side.
- 2) Push the / button to playback.
The LED lights in green on playback.
- 3) Push the / button again to stop.
Fast-forwarding() and
rewinding() during playback
Up or Down the / button until it
moves fast forward() or rewind()
to search a certain part of the
current message.
Up or Down the / button shortly
to turn to the next or previous number
of message.

Pause function

Press the MODE/PAUSE button during playback.

The "PAUSE" letter blinks on LCD, which means pause function is being operated.

To release the pause function, press the MODE/PAUSE button again.

Scanning

At stop mode, push the / button for more than 2 seconds.

Then, "SCAN" will be displayed and the unit will playback each message for about 5 seconds in sequence from the first message to the last message.

The "SCAN" will playback all messages in the current folder. Push / button, again to cancel scanning.



Repeat of a section

During playback, push FOLD/REPEAT button to set the start point of the desired repeat section.

And push FOLD/REPEAT button again to set the end point of the section.

Then, the recorder repeats the section you set.

4 Erasing

1) Erasing one message

Select the recorded number you want to erase.

Press the ERASE button.

The recorded message will be played.

Press the ERASE button again within 3 seconds to erase.

To cancel erasing, press any button other than the ERASE button.

2) Erasing all recorded messages in one folder

Select the folder which you want to erase at stop mode.

Press the ERASE button for more than 4 seconds.

Then the folder icon will blink.

Press the ERASE button again to erase the folder.

To cancel erasing, press any button other than the ERASE button.

5 Adjusting Volume

1) You can adjust Volume level by pressing VOLUME +/- button.

(The volume will not be controlled during recording.)



6 Message transfer between folders

- 1) Press the FOLD/REPEAT button at stop mode to turn to another folder.
(Each folder accommodates 99 messages at maximum.)
- 2) To move a file to another folder, select the message and press the MODE/PAUSE button until it displays "MOVE"
- 3) Select the folder to where you desire to move the message by up/down / and push the / button to move.
- 4) If you want to keep a message safely from erasing it by mistake, move it to L (lock) folder where erase operation is kept from working.

7 Hold Function

- 1) If the HOLD switch is set upwards, any button is not operated.
- 2) If the HOLD switch is set upwards, the key icon is displayed on LCD, which means Hold function is set.
- 3) To release the hold function, move the HOLD switch downwards.

8 Setting the Record mode

- 1) Press the MODE/PAUSE button one time at stop mode and then, the record mode (HQ/SP/LP) is displayed on LCD.
- 2) Move the / button upwards or downwards and select your desired record mode (SP or HQ or LP).
- 3) After selecting the record mode, press the / button and then, LCD displays the selected record mode.



9 Setting the VOS mode

- 1) Press the MODE/PAUSE button 2 times at the stop mode until "VOS" is displayed.
- 2) Select "on" mode by the / button and press the / button.
- 3) On recording by VOS mode, the recorder senses to sound and automatically play/stop recording according to that it catches sounds or not.

When the recorder catches no sound, it displays "SENSE" on LCD while not recording.

10 Setting Mic sensitivity

- 1) Press the MODE/PAUSE button 3 times until "REP" letter is displayed.
- 2) Toggle "HI" or "LO" mode by the / button and push the / button to select.
- 3) "HI" or "LO" shall be displayed on LCD.



11 Repeating the Playback

- 1) Press the MODE/PAUSE button 4 times until "REP" is displayed.
- 2) Toggle among "FO", "AL" or "NO" by the / button and push the / button to select.

When you playback on "FO" repeat mode, the recorder repeats all in the current folder.

When you playback on "AL" repeat mode, the recorder repeats all in the all folder.

If you want to playback just one file at a time, set it to "NO".

12 Setting Beep On/Off Function

- 1) Press the MODE/PAUSE button 5 times until "BEEP" is displayed.
- 2) Select "ON" or "OFF" mode by the / button and press the / button.
- 3) When BEEP on mode, the recorder makes beep sound each time pressing button.



13 Setting Hearing-aid Function

- 1) Press the MODE/PAUSE button 6 times until "HEAR" is displayed.
- 2) Select "ON" by the / button if you wish to use the recorder as a hearing aid.
- 3) Connect and use earphone to hear.
- 4) To stop activating the hearing aid, press any button of the recorder.

The sound you hear is not being recorded.

14 Setting Preengaged Recording

- 1) Press the MODE/PAUSE button 7 times until "P-REC" is displayed.
- 2) Set it "ON" by the / button and press the / button for time pre-set recording.
- 3) Set time of recording-start. (Upto 4 hours.)
- 4) The recorder is to be turned on and to start recording after the setting time.

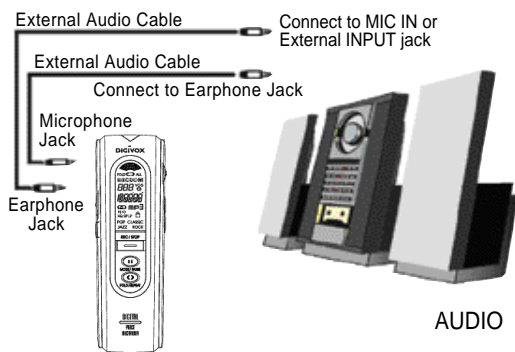


15 Setting Alarm Function

- 1) Press the MODE/PAUSE button 8 times until "ALARM" is displayed.
- 2) Select "ON" or "OFF" mode by the / button and press the / button.
- 3) After your setting the mode to be "ON", select your desired time by the / button and press the / button.
You can set up the time upto 4 hour after.
- 4) On the time you set, the recorder automatically playbacks the file of on in "A" folder.
- 5) Press the / button to stop the playback.

16 Connecting External Equipments (Optional)

- 1) Recording from the external equipments into the voice recorder
You can record by connecting an external cable between the MIC jack of the voice recorder and the earphone jack of an external equipment.
- 2) Recording from the voice recorder into the external equipments
Connect an external cable between the EAR JACK of the voice recorder and the MIC IN, or the external input jack of an external equipment.
Press the PLAY button of the voice recorder and the REC button of an external equipments.
You can adjust volume by using VOLUME button of the voice recorder.



17 Phone Recording (Optional)

Recording the messages during phone conversation

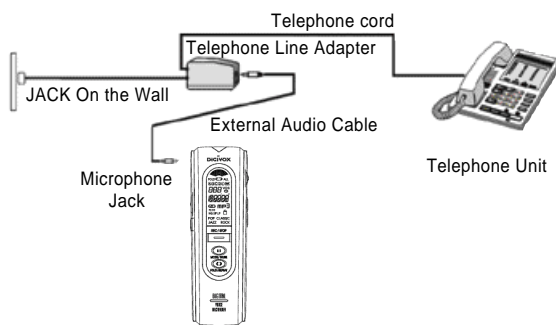
- 1) Connect an external cable between the MIC JACK of voice recorder and the AUDIO OUT JACK of Telephone Adapter.
- 2) Connect the Telephone line cord between Telephone Adapter and Telephone unit.
- 3) Connect the phone line to another jack of the Adapter.
- 4) Press the REC/STOP button of voice recorder and then, the phone conversation will be recorded.

Protection of Communication Privacy

To record phone conversation without counterpart's consent may be against the related laws.



Voice Manager Program Installation



System Requirement
Computer : Pentium or IBM compatible system with USB support
Memory : 64MB or higher
OS : Windows 98/ME/2000/XP
Hard Disk : At least 100 MB free disk space
Playback : Soundcard, Speaker
Recording : Sound Card, Microphone

Insert the Voice Manager program CD into CD-ROM drive.
Program SETUP will be started as follows.



Click "Next".



Choose your Destination Location and click "Next".



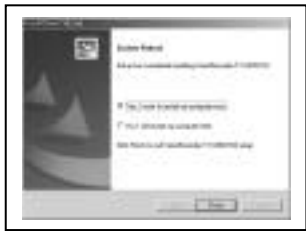
Fill the blanks and click "Next".



Click "Next" on Start Copying Files Window.



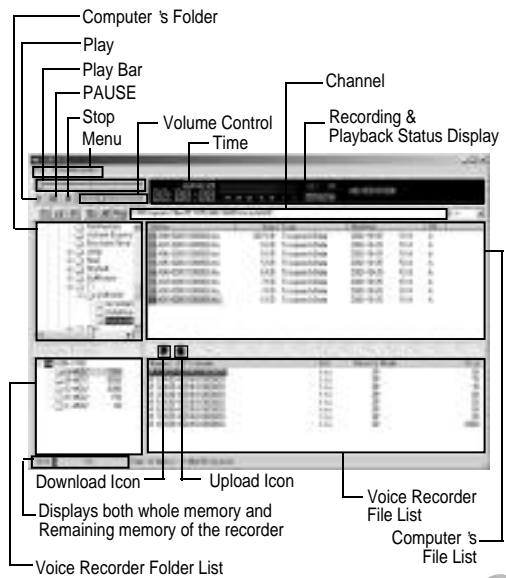
Click " Finish " on InstallShield Wizard Complete Window



Click "Yes, I want to restart my computer now" on reboot windows
 Click "Finish" then, Driver installation is completed.

Using Voice Manager Program

1 Composition





2 Connect Voice recorder and PC with USB cable.

3 To Upload files to PC

Select a folder of the Voice Recorder Folder List.

Select a file of the Voice Recorder File List.

Click the Upload Icon.

The selected file is copied to your computer.

4 To Download files from PC

Select a folder of the Computer 's folder list.

Select a file (voice or data file) of your computer file list.

(If you play the data file of the voice recorder, LCD displays " FILE ")

Click the Download Icon.

The selected file is copied to Voice Recorder.

5 To play the uploaded files

Click Play Icon, the selected file will be played.

You can adjust Volume by dragging Volume Control to left or right side.

If you click and drag Play bar, the file will be played from the part where the bar is indicating.

6 Voice E.mailing

You can email the recorded file saved in *.tru file to receiver by converting to *.wav file as per the following procedures and the receiver can hear the file through wav file player.

- Select the file you want in PC file list.

- If you select "File Conversion" after clicking "File" of menu, the "Conversion Option" is displayed as per the following window.



Troubleshooting



Select the mode you want among HQ, SP and LP.

Select the folder you want after clicking "Change", if you'd like to save the wav file in other folder.

(Otherwise you select a certain folder, it is saved in the current folder "C: Program Files T1 USBV102 voicedata")

If you click "Conversion Start", the file saved in tru file is converted to wav file.

You can email "C: Program Files T1 USBV102 voicedata" or the wav file saved in the designated folder to receiver as the attached file.

"Overwrite" is used for overwriting the converted file to wav file newly.

Please check the followings first before you ask for a service.

In case of no LCD display	Did you check the battery capacity? Replace batteries. Are both polarities of the battery loading in right way? Load batteries in each correct + / - position.
In case of no recording	Isn't it at Hold position? Set Hold switch off. Isn't the message number or message FULL? Erase unnecessary message. Did you check the battery capacity? Replace batteries.
In case of no Playback	Isn't it at Hold position? Set Hold switch off. Isn't there any recorded message? Check the recorded message. Did you check the battery capacity? Replace batteries.
In case of no sound from speaker	Isn't your VOLUME at 0(Zero) position? Adjust the VOLUME level. Isn't your Earphone inserted in? Take the Earphone Jack OFF.
In case of no sound from Earphone	Isn't your VOLUME at 0(Zero) position? Adjust the VOLUME level. Is your Earphone properly inserted in ? Insert the Earphone Jack completely.



Cautions

General

1. Dropping and other shock or pressure to the cabinet can cause damage.
2. Pressure to the LCD may cause permanent damage to the performance of the LCD.
3. Always avoid high heat from any source. Leaving the unit in direct sunlight or in a hot car (as in Summer) can damage the unit.
4. Keep the unit clear from dust and contamination that cause damage.
5. High humidity, dampness or liquid spills should be avoided.

Cautions

Safety precautions

1. Do not attempt to repair, disassemble or modify this unit.
2. Do not use in aircraft during take-off or landing.

Cautions for Safety

1. This unit contains a high quality speaker.
Keep the unit away from credit cards since the speaker's magnetic strips on credit cards and other similar items that have magnetic strips.
2. The seller holds no liability for any damage caused by accident or misuse of this product or for any claims by a third party.
3. The seller holds no liability for loss of any message for any reason.



Specifications

Model	DVU-1032	DVU-1064	
Recording Time	HQ	About 6 hours	About 12 hours
	SP	About 8 hours	About 16 hours
	LP	About 17 hours	About 34 hours
Number of Message	5 Folders x 99 messages (Including one additional lock folder)		
Frequency Range for Recording / Playback	300Mz ~ 3,500Mz		
Out Power	100mW (T.H.D 10%)		
Input	Audio Analog In (-60dB), 3.5		
Output	Earphone(Mini Plug/Stereo) IMP Over 16 Ohms, 3.5		
Speaker	23mm, 8 Ohms Dynamic Speaker		
Dimension	31.4(W) x 101(H) x 18.2(D)mm		
Memory Medium	Built in Flash Memory		
Power Source	1.5V, AAA ALKALINE x 2		
ACCESSORY	Basic : User Manual, Stereo Earphone, 2 Batteries, USB CABLE, Install CD, Hand Strap		
	Optional : External Pin Microphone, Audio Cable, Tel Adapter & Tel Line Cord		

FCC Note

THIS DEVICE COMPLIES WITH PART 15 OF THE FCC RULES.
 OPERATION IS SUBJECT TO THE FOLLOWING TWO CONDITIONS:

1. THIS DEVICE MAY NOT CAUSE HARMFUL INTERFERENCE, AND
2. THIS DEVICE MUST ACCEPT ANY INTERFERENCE RECEIVED, INCLUDING INTERFERENCE THAT MAY CAUSE UNDERSIRED OPERATION.

This equipment has been tested and found to comply with the limits for a Class B digital device, pursuant to part 15 of the FCC Rules.

These limits are designed to provide reasonable protection against harmful interference in a residential installation.

This equipment generates, uses and can radiate radio frequency energy and, if not installed and used in accordance with the instructions, may cause harmful interference to radio communication.



Guarantee

However, there is no guarantee that interference will not occur in a particular installation.

If this equipment does cause harmful interference to radio or television reception, which can be determined by turning the equipment off and on, the user is encouraged to try to correct the interference by one or more of the following measures :

- Reorient or relocate the receiving antenna.
- Increase the separation between the equipment and receiver.
- Connect the equipment into an outlet on a circuit different from that to which the receiver is connected.
- Consult the dealer of an experienced radio/TV technician for help.

NOTE : The manufacturer is not responsible for any radio or TV interference caused by unauthorized modifications to this equipment.

Such modifications could void the user's authority to operate the equipment.

PRODUCT	DIGITAL RECORDER	MODEL	DVU-1032 / DVU-1064		
		SALES DATE	yy	mm	dd
CUSTOMER	ADDRESS	TEL			
	NAME				
SALES AGENCY	ADDRESS	TEL			
	AGENCY NAME				