



110 Nortech Parkway
San Jose, California, 95134

FCC 15.247 Certification Application

Internal Product Photos

**Airespace Model: 1200
802.11 A / B Access Point**

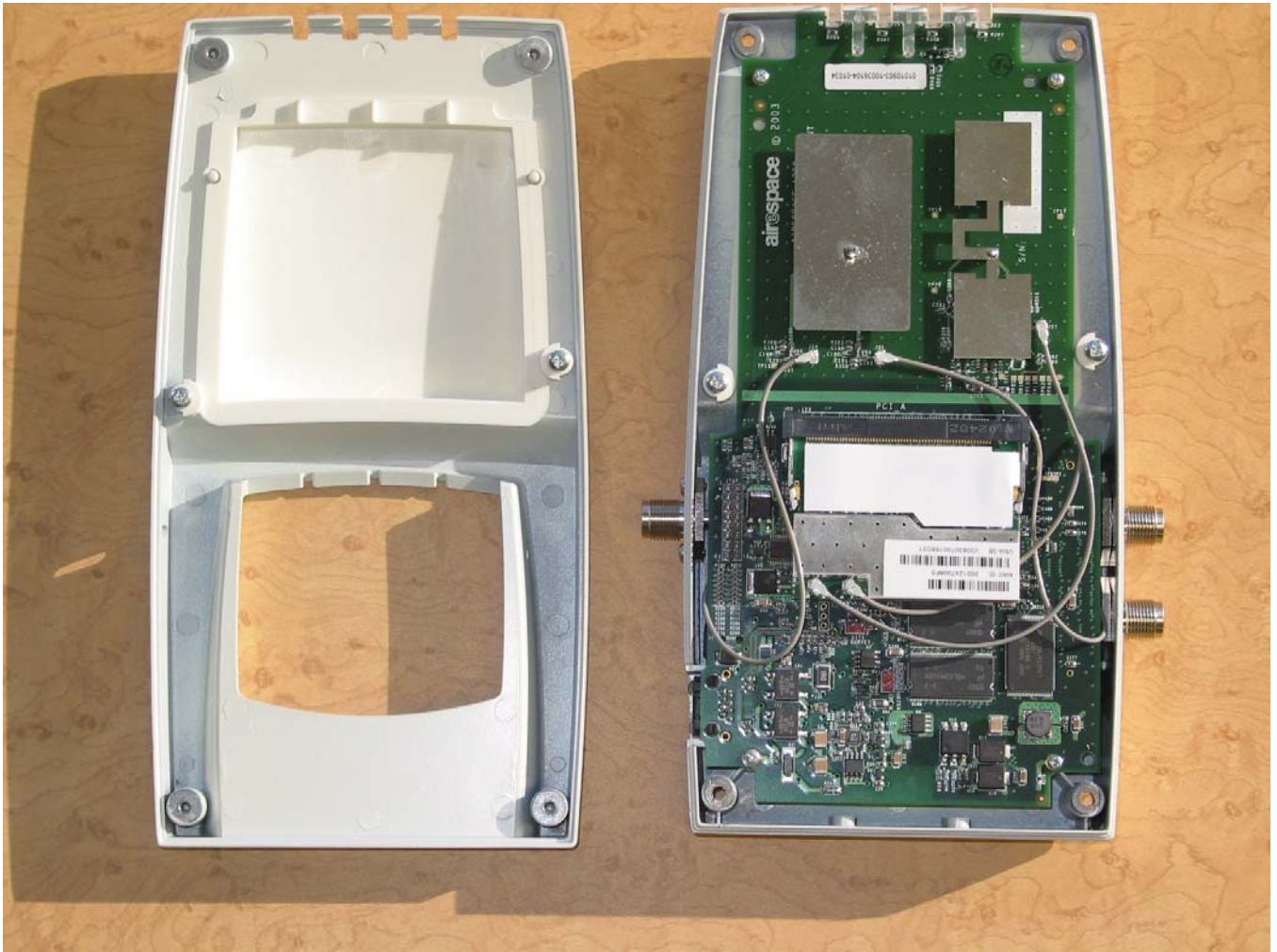
FCC ID: QTZWNAP1200AB

Prepared by:

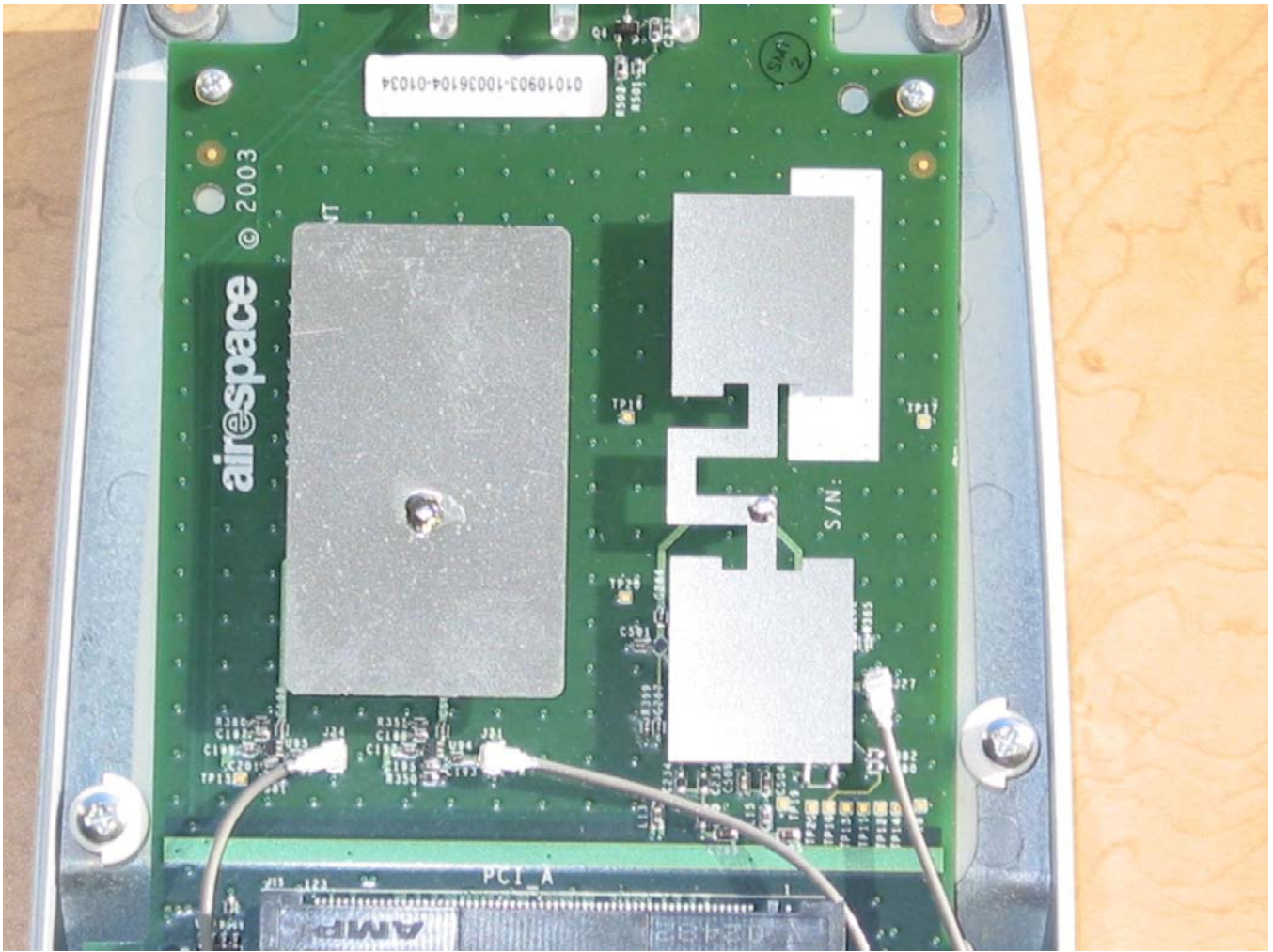
David Waitt
202 Calvert Drive #217
Cupertino, Ca. 95014
david@waitt.us
(408) 832 7053



1200A External View

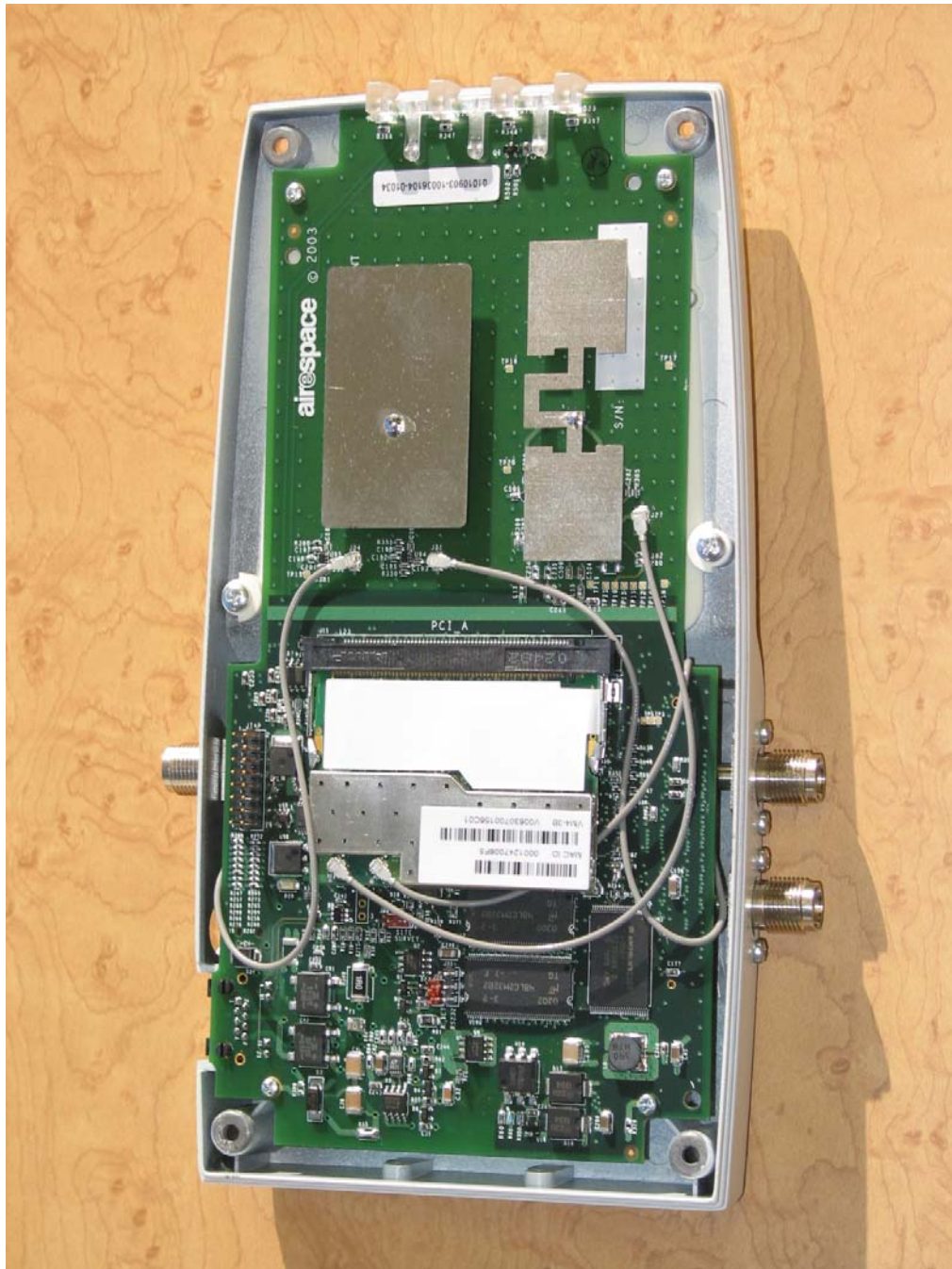


1200 A/B Housing Open

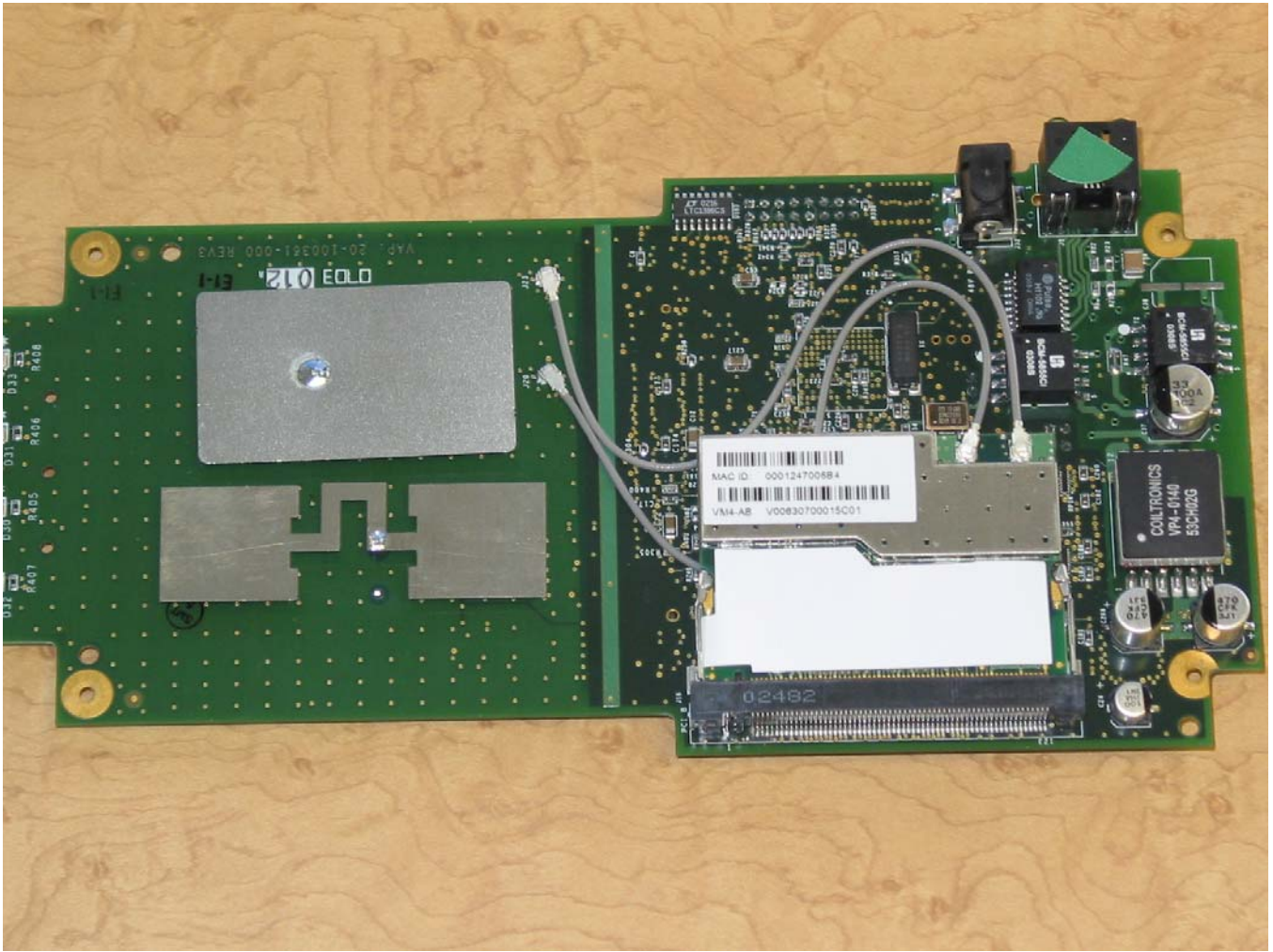


1200 A, 'A' Side Antenna detail

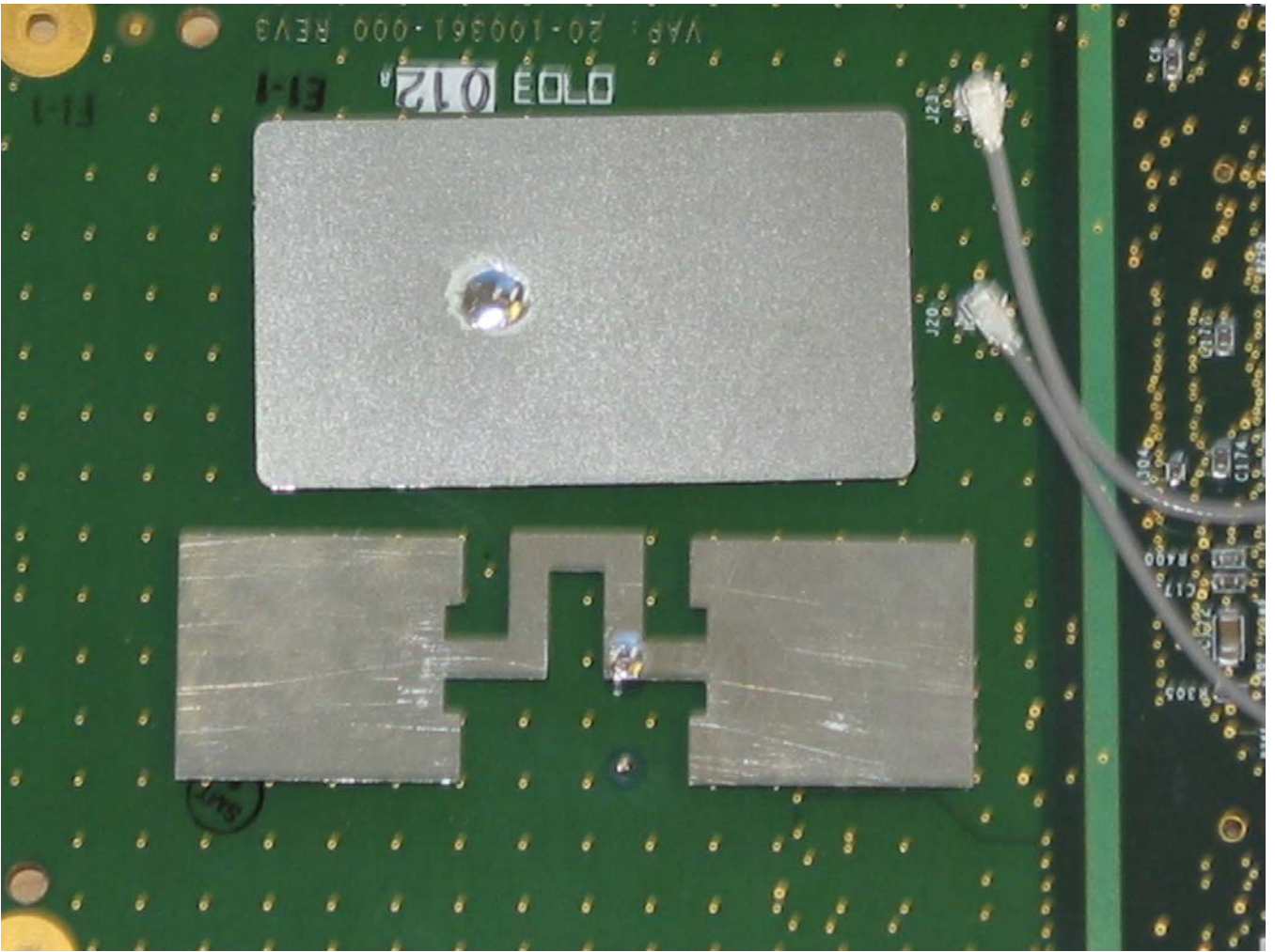
2.4 GHz antenna is on the left. The 5GHz antenna is on the right.

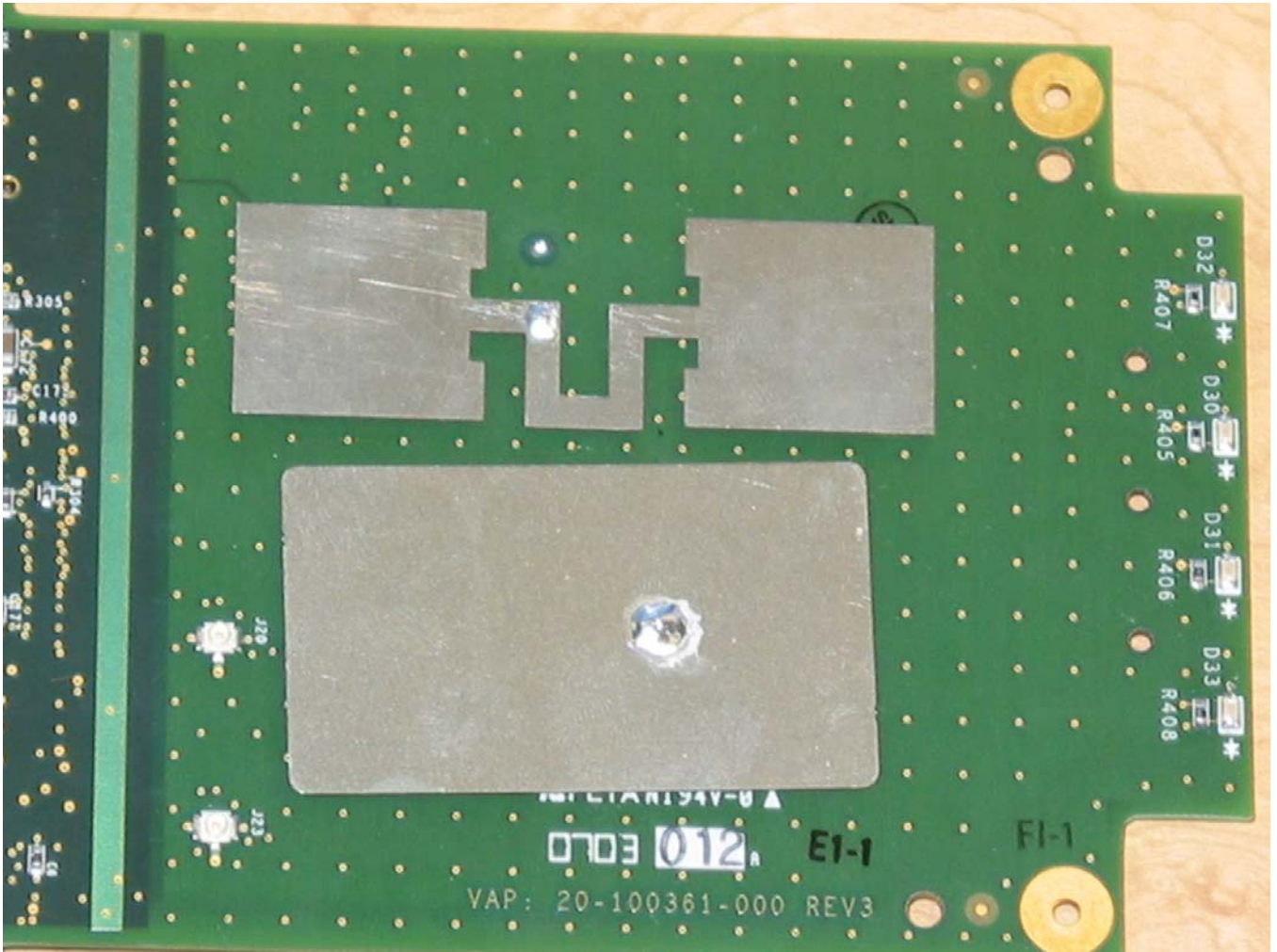


1200 A Board side detail

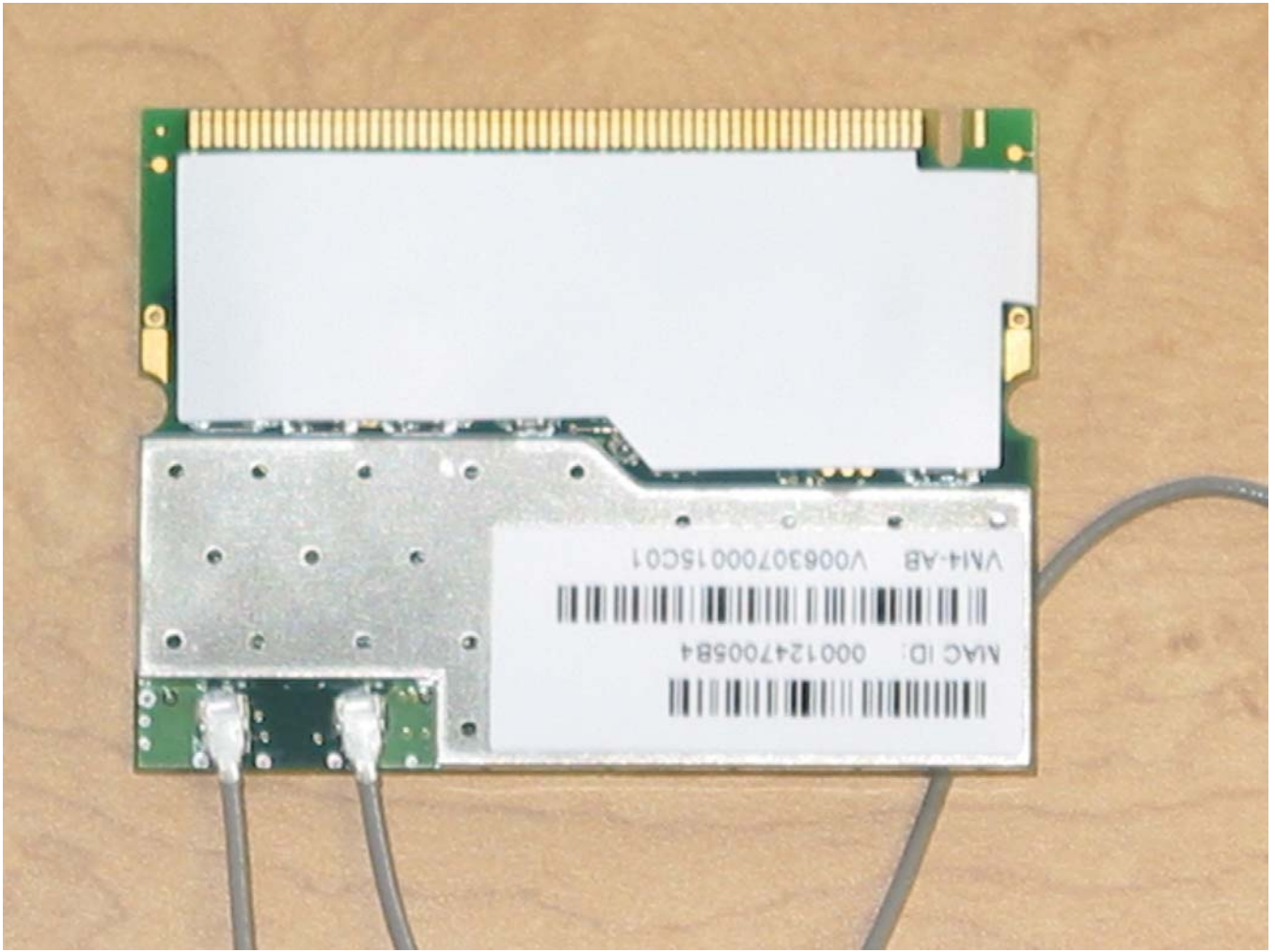


1200 A/B board showing the 802.11 B side of the radio.

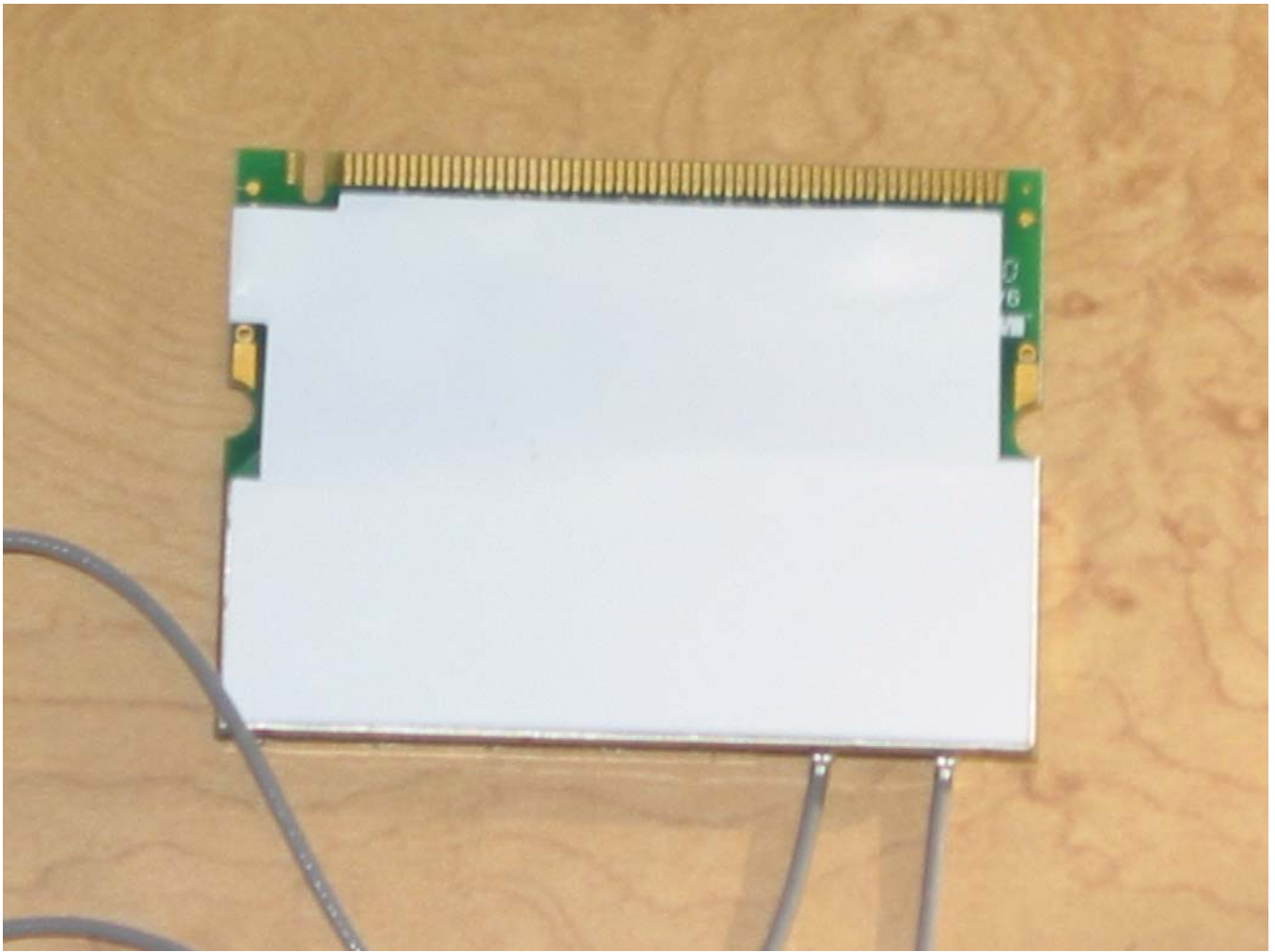




802.11 B side antenna detail.
5 GHz antenna (top)
'B' 2.4 GHz antenna , bottom in this photo



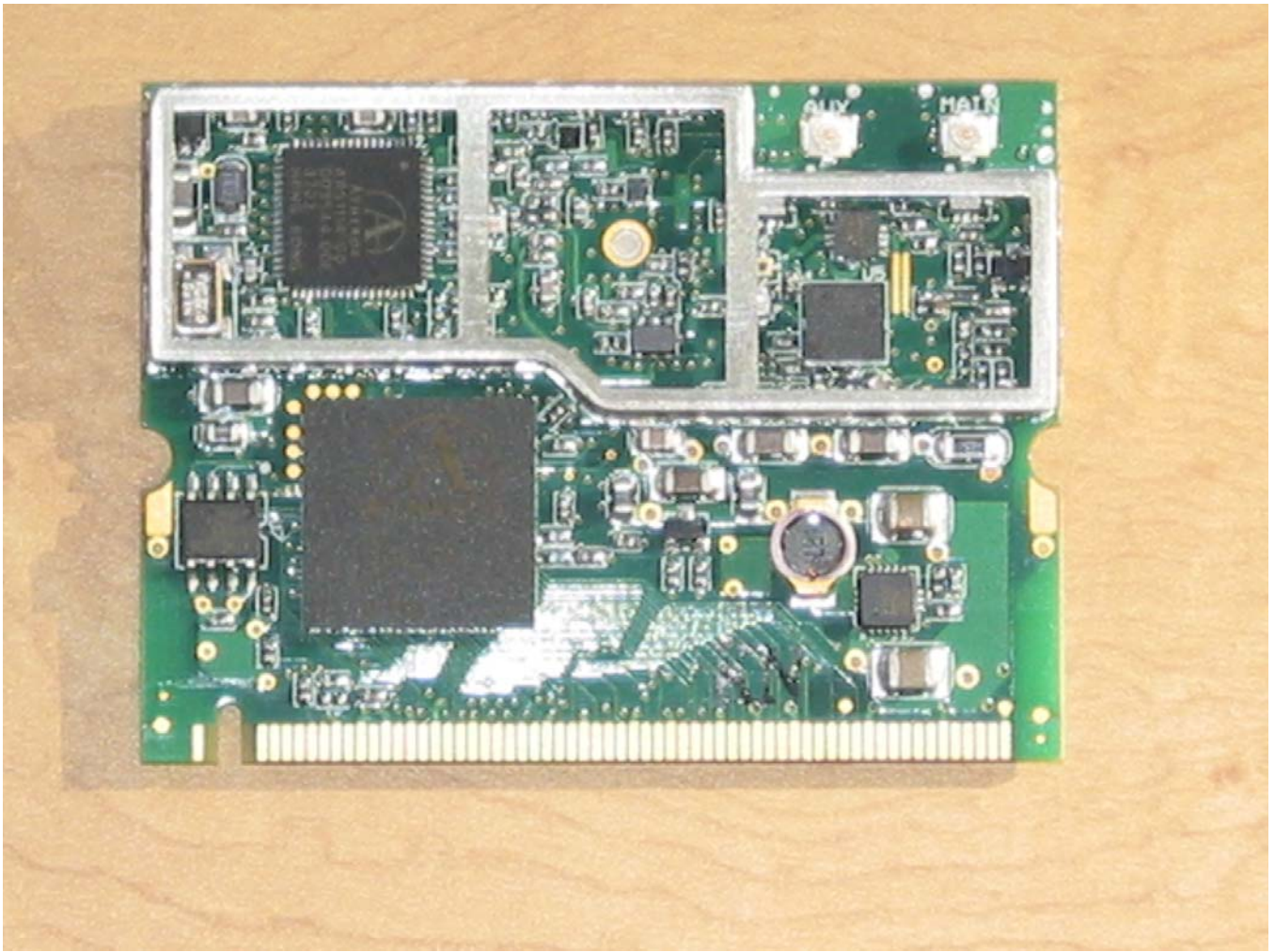
IEEE802.11 mini PCI module front



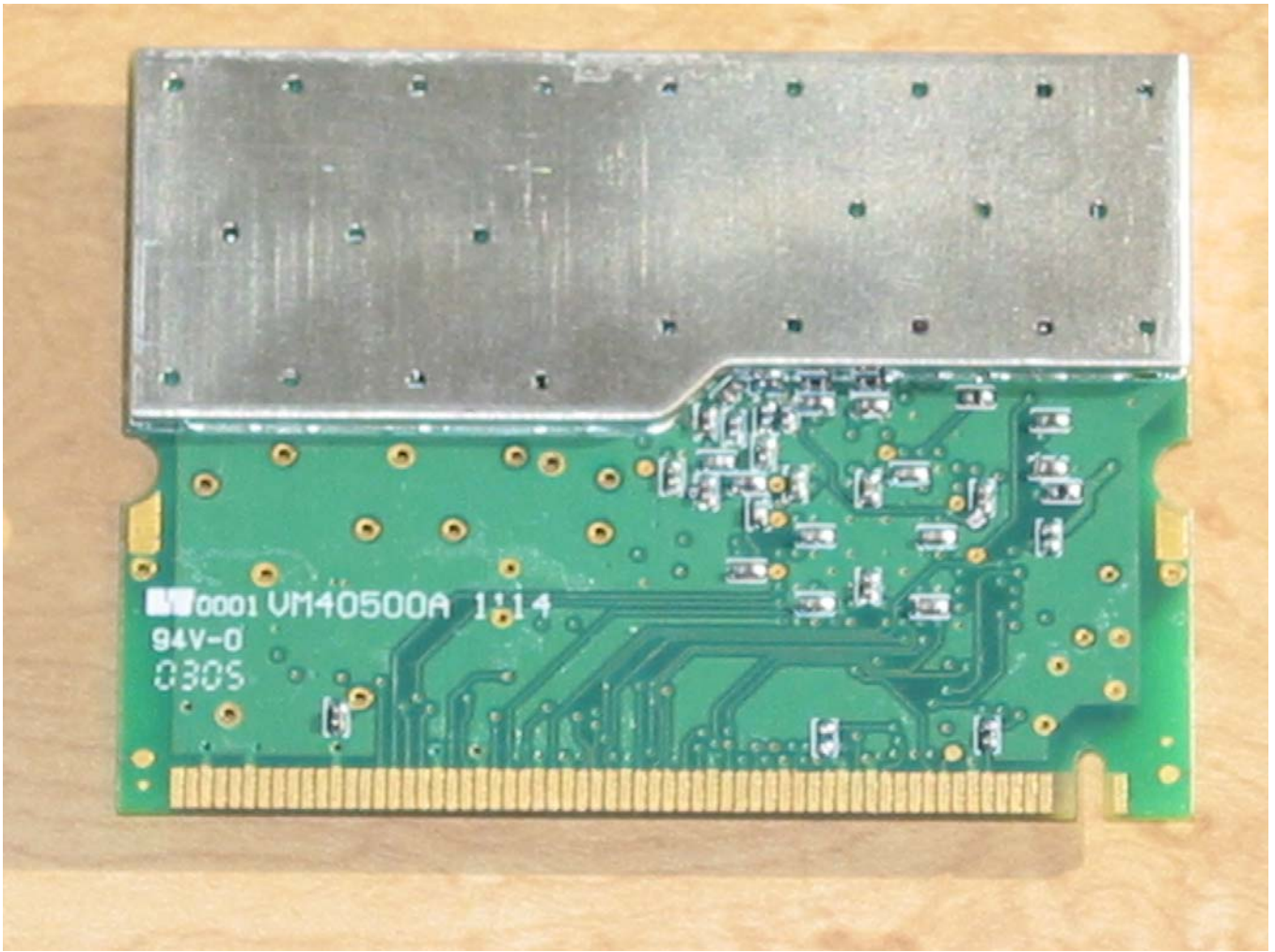
IEEE802.11 mini PCI module rear



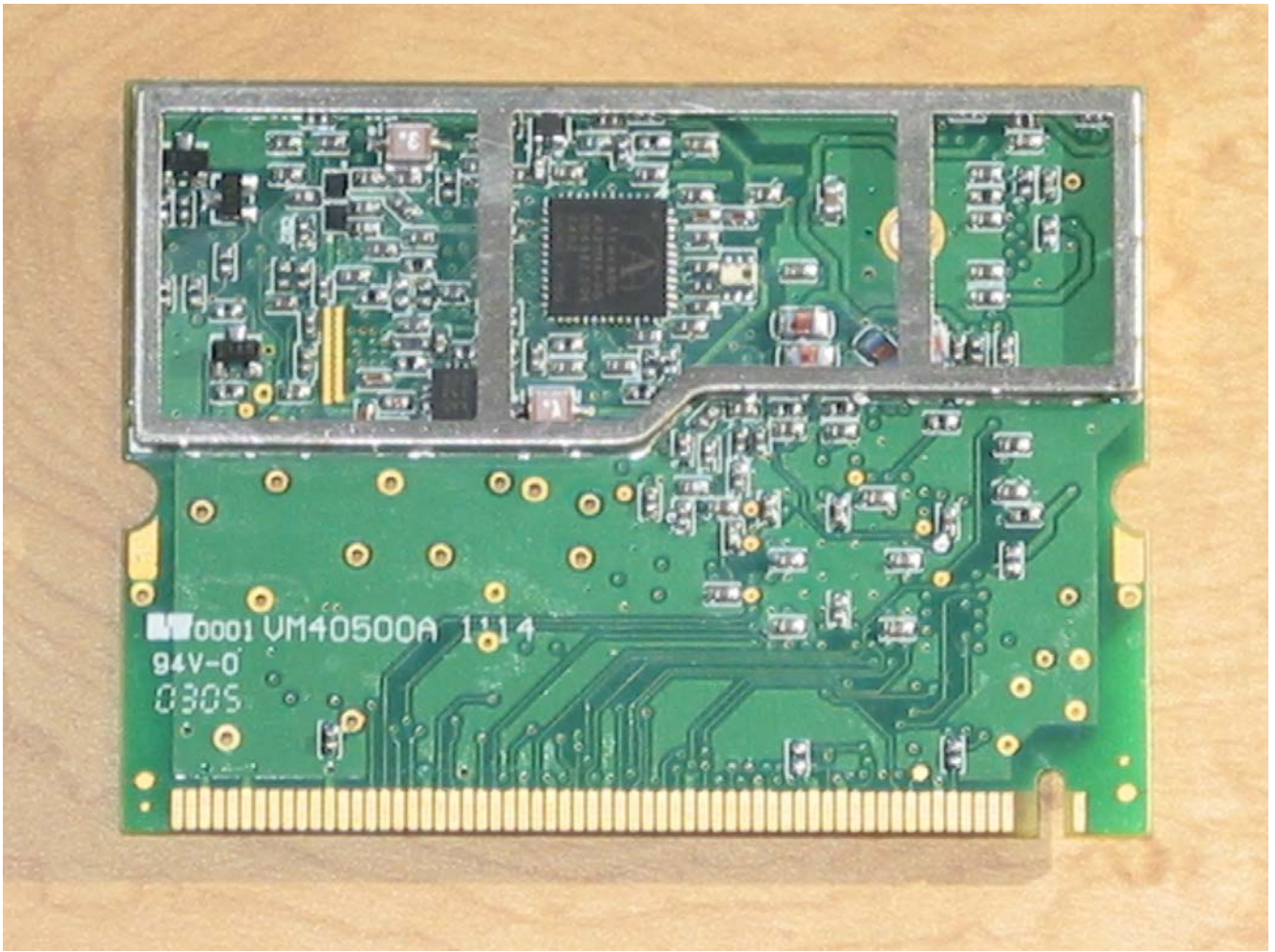
IEEE802.11 mini PCI module, covering removed



IEEE802.11 mini PCI module, shield removed

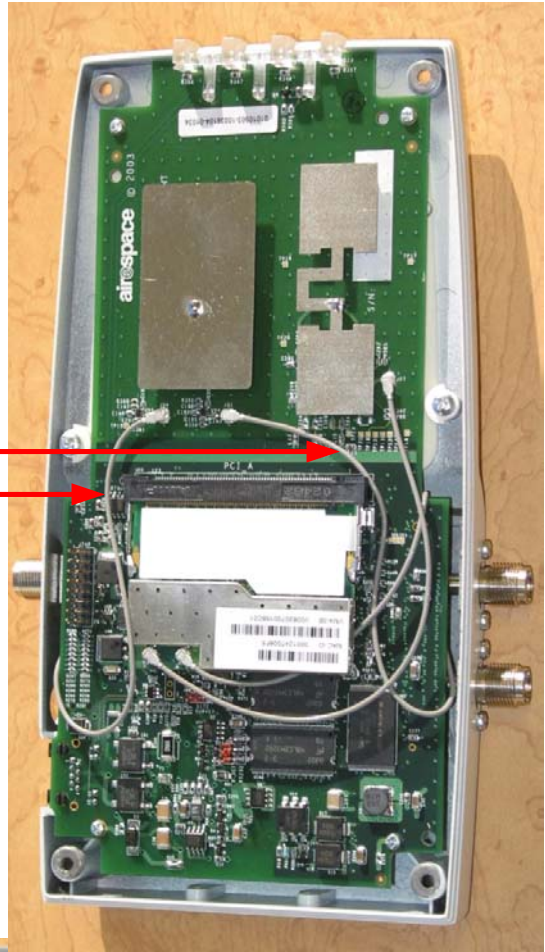


IEEE802.11 mini PCI module, covering removed, back



IEEE802.11 mini PCI module, shield removed, back

These cables connect the main PCB to the external 2.4 GHz antenna connectors



Cables used to connect the main PCB to the 2.4 GHz external antennas connectors

5GHz external antenna connector, in place, but not supported by the configuration software.

