



110 Nortech Parkway
San Jose, California, 95134

FCC 15.247 Certification Application

Internal Product Photos

**Airespace Model: 1200
802.11 A Access Point**

FCC ID: QTZWNAP1200A

Prepared by:

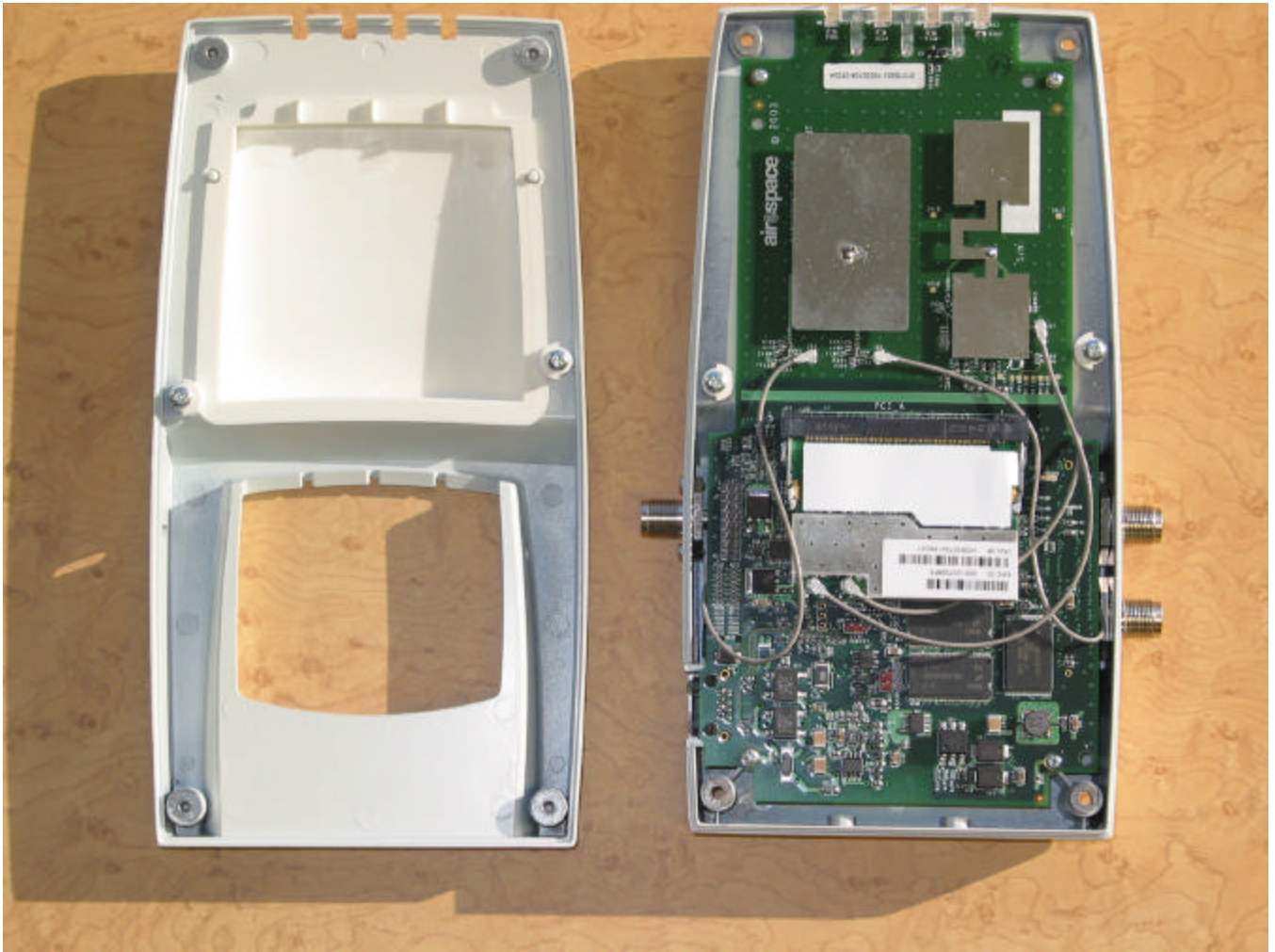
David Waitt
202 Calvert Drive #217
Cupertino, Ca. 95014
david@waitt.us
(408) 832 7053



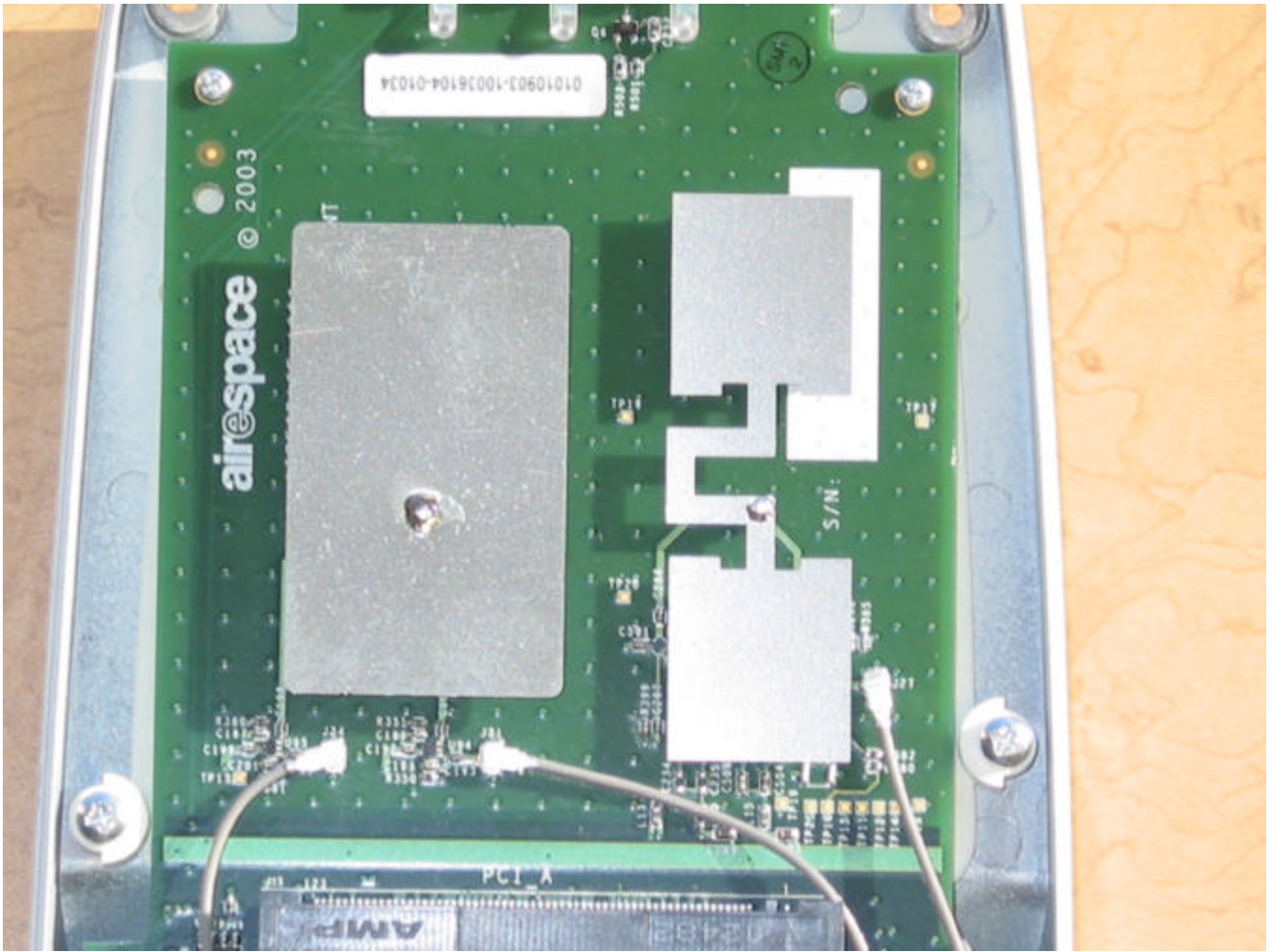
1200A External View



1200A with Access door removed

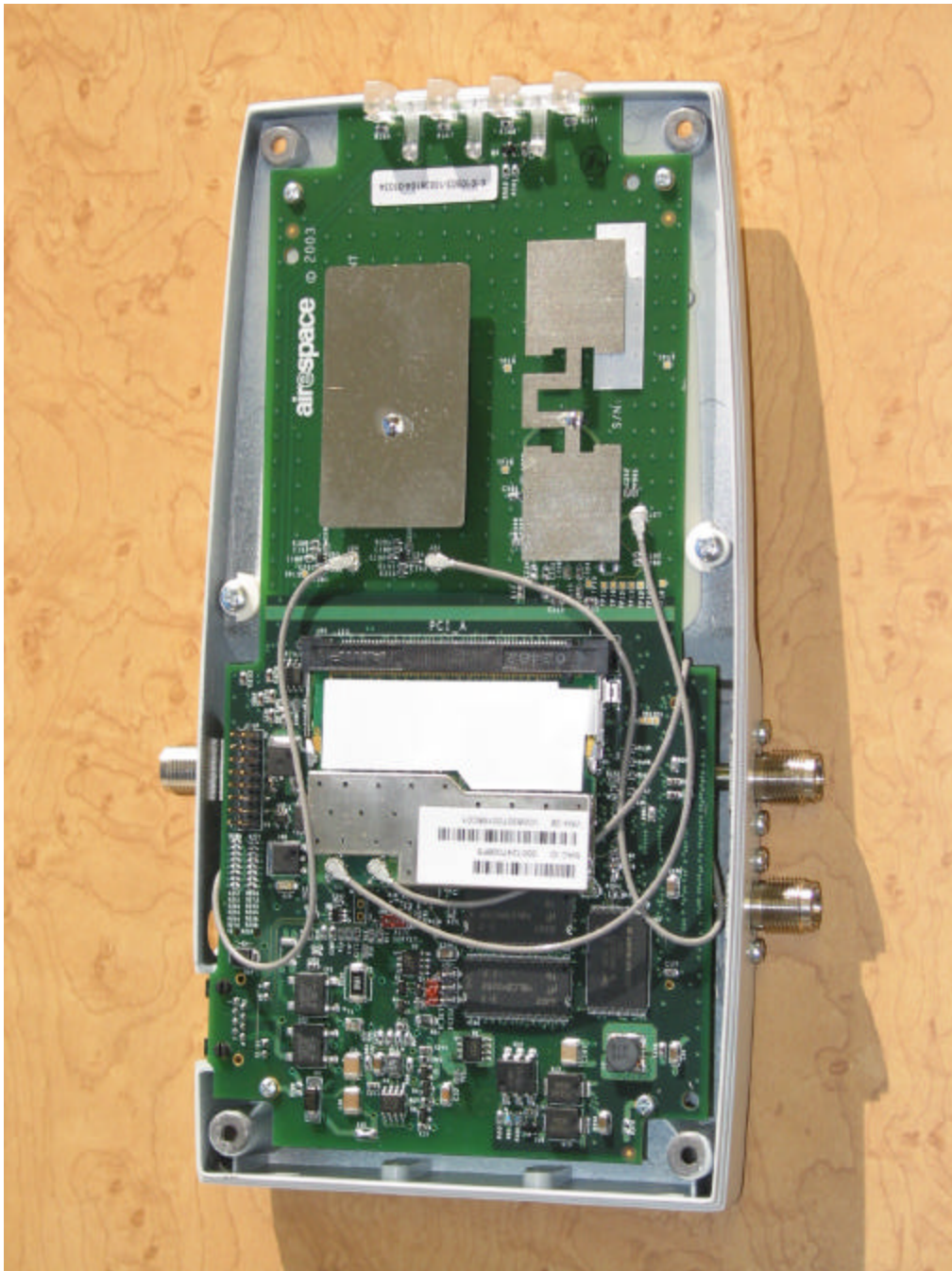


1200 A Housing Open

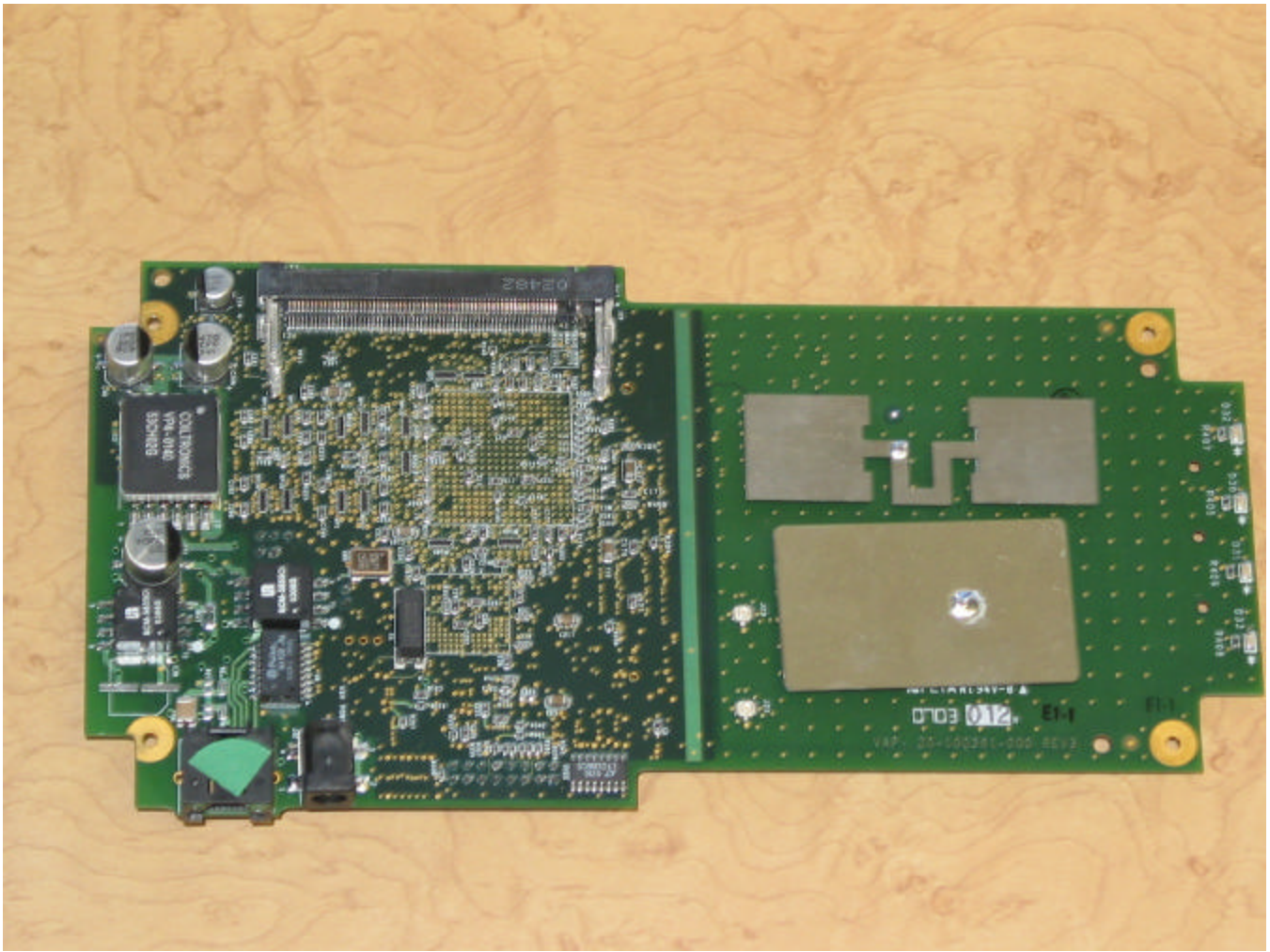


1200 A, 'A' Side Antenna detail

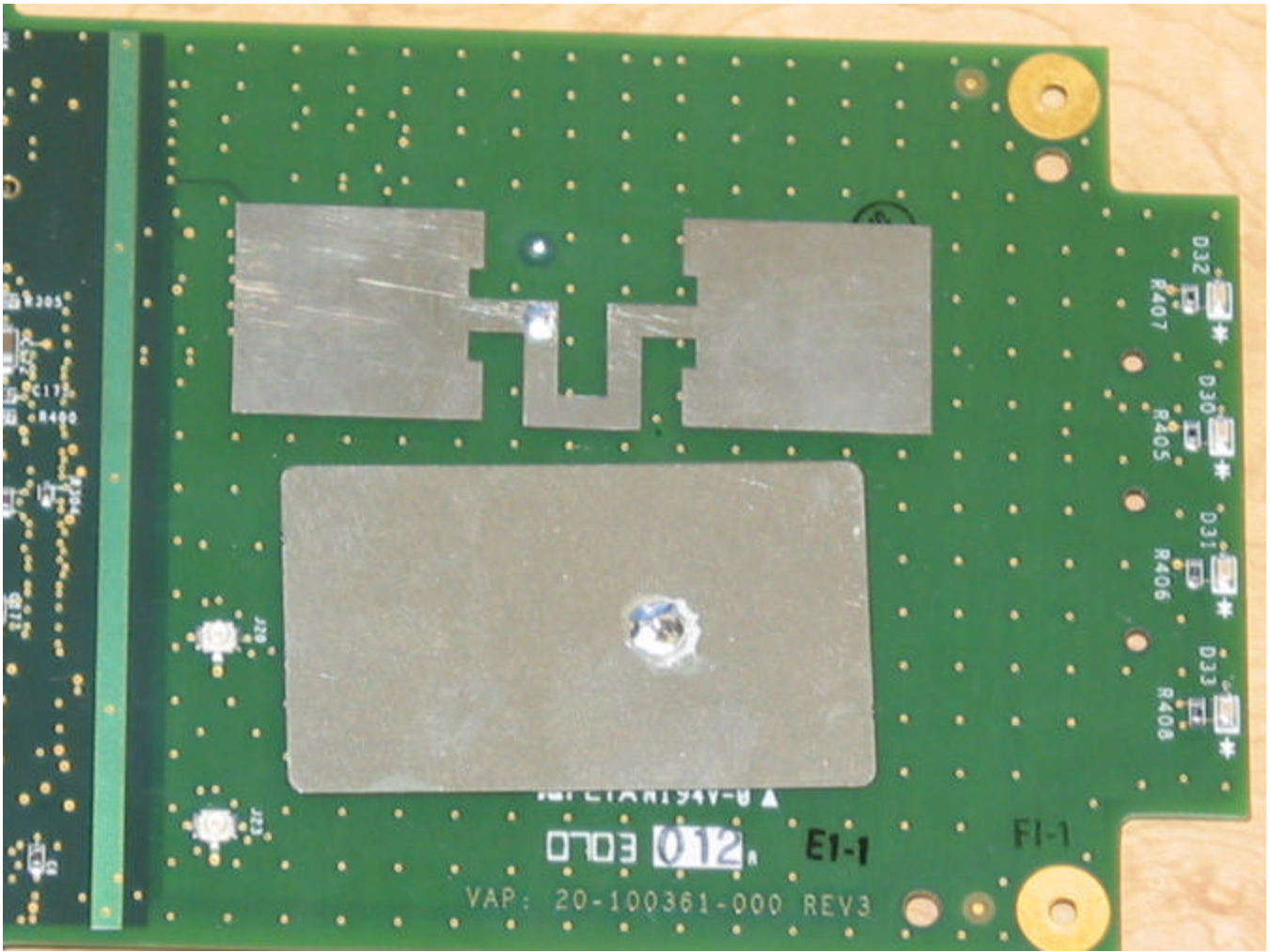
*2.4 GHz antenna is on the left. The 2.4 GHz antenna is unused in the 1200 A version of the radio.
The 5GHz antenna is on the left.*



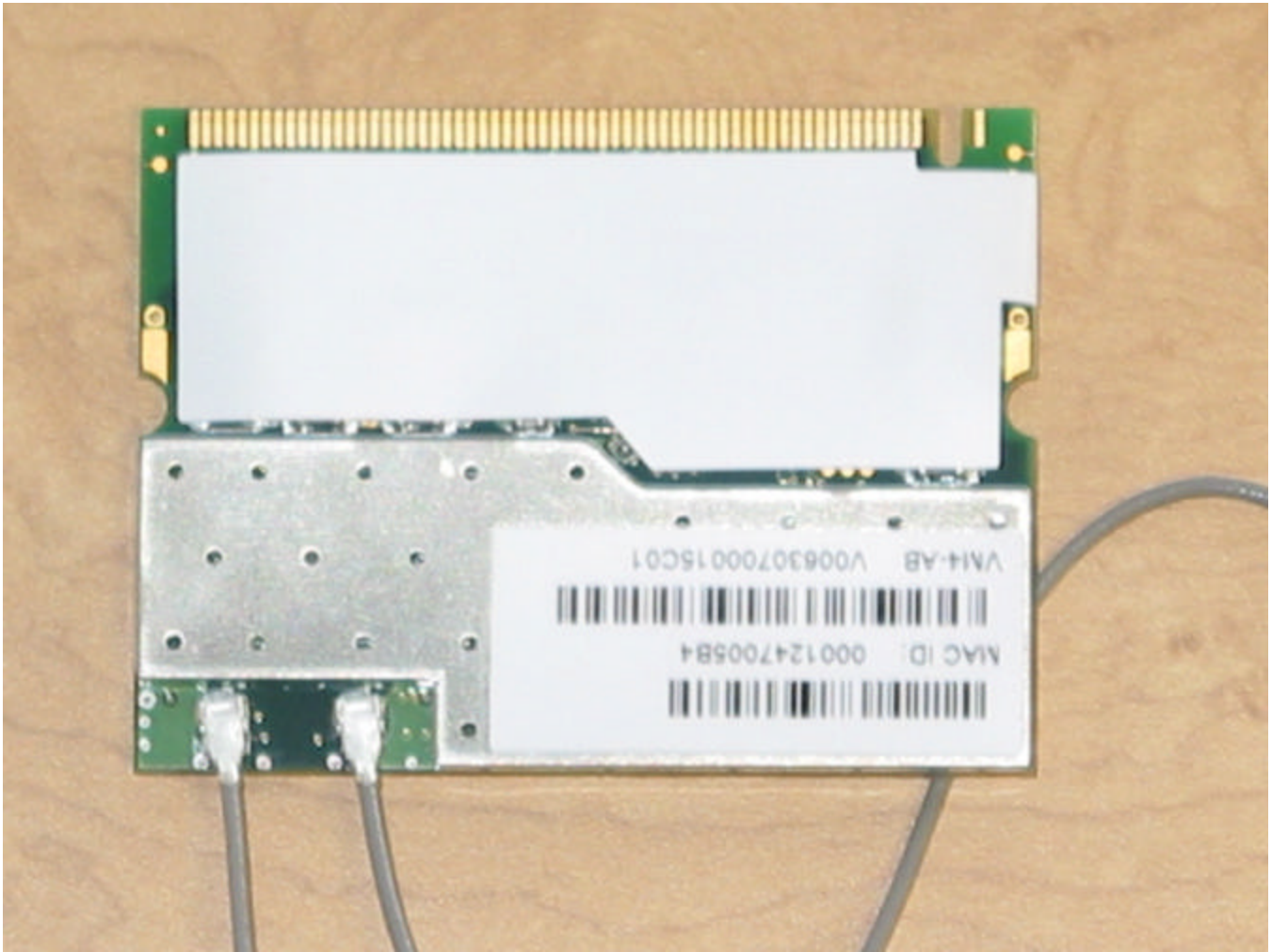
1200 A Board side detail



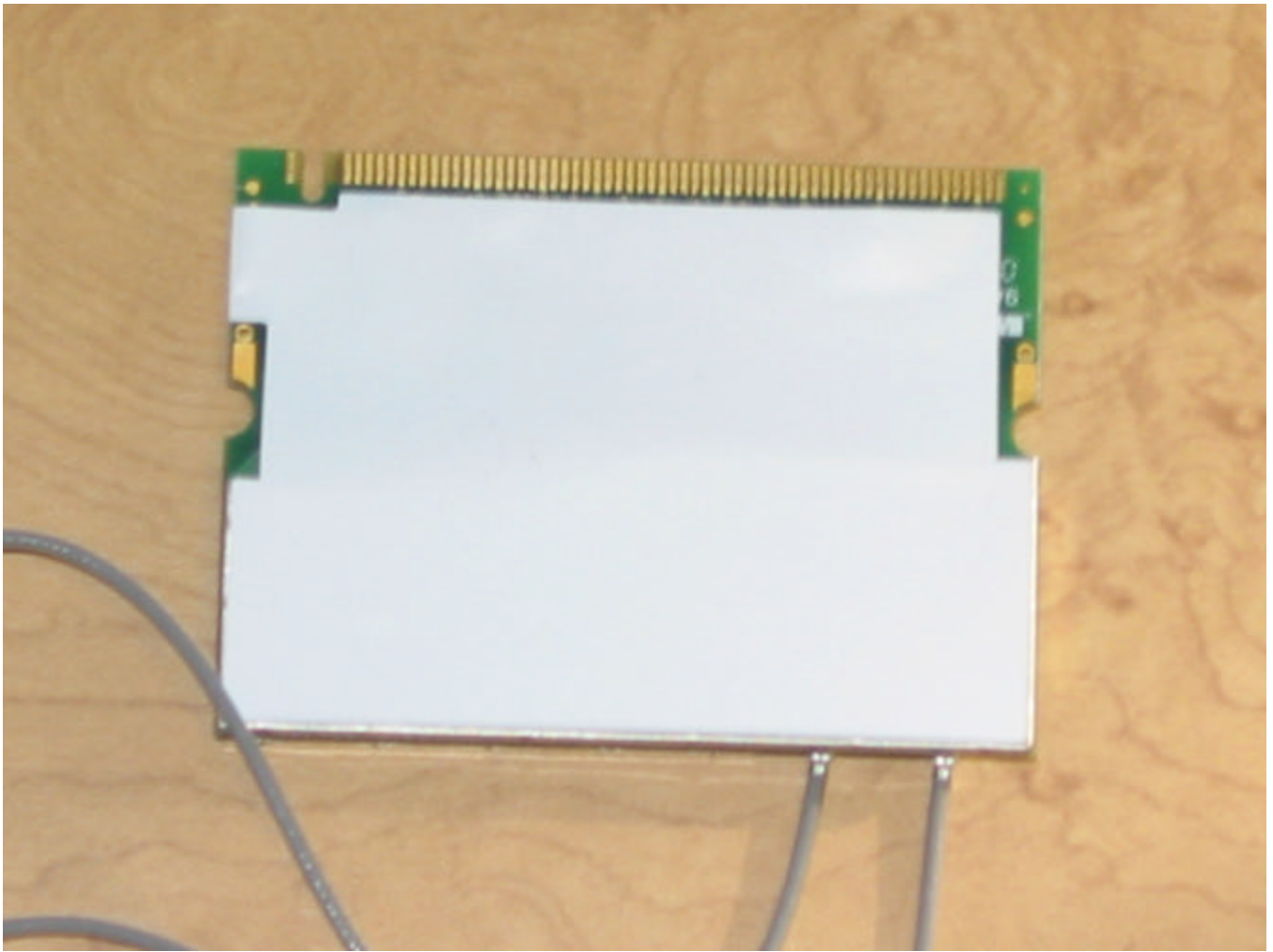
1200 A board showing the unused 802.11 B side of the radio.



802.11 B side antenna detail.
The 5 GHz antenna (top) is used for antenna diversity, however the 'B' 2.4 GHz antenna (bottom in this photo) is NOT used



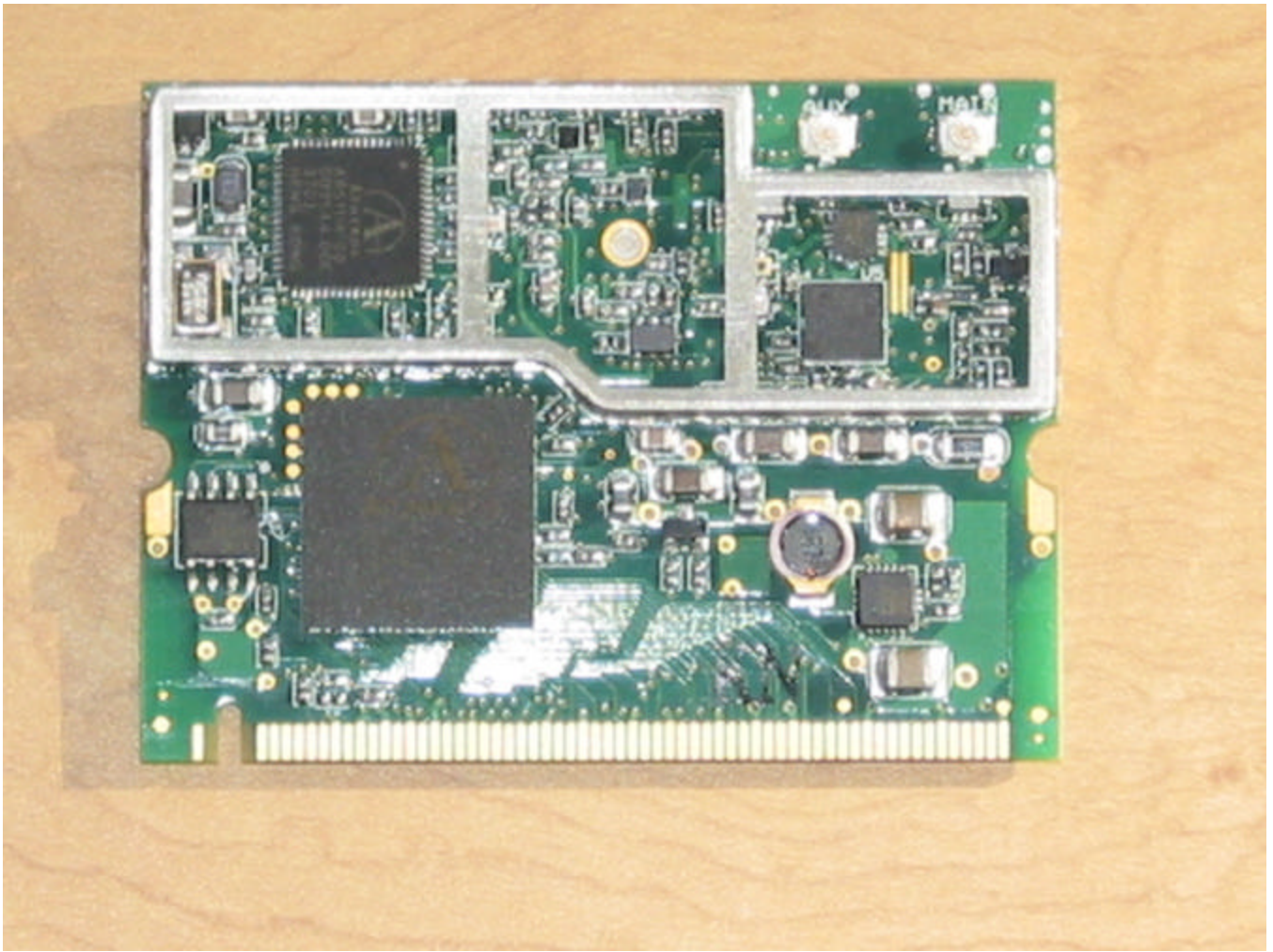
IEEE802.11 mini PCI module front



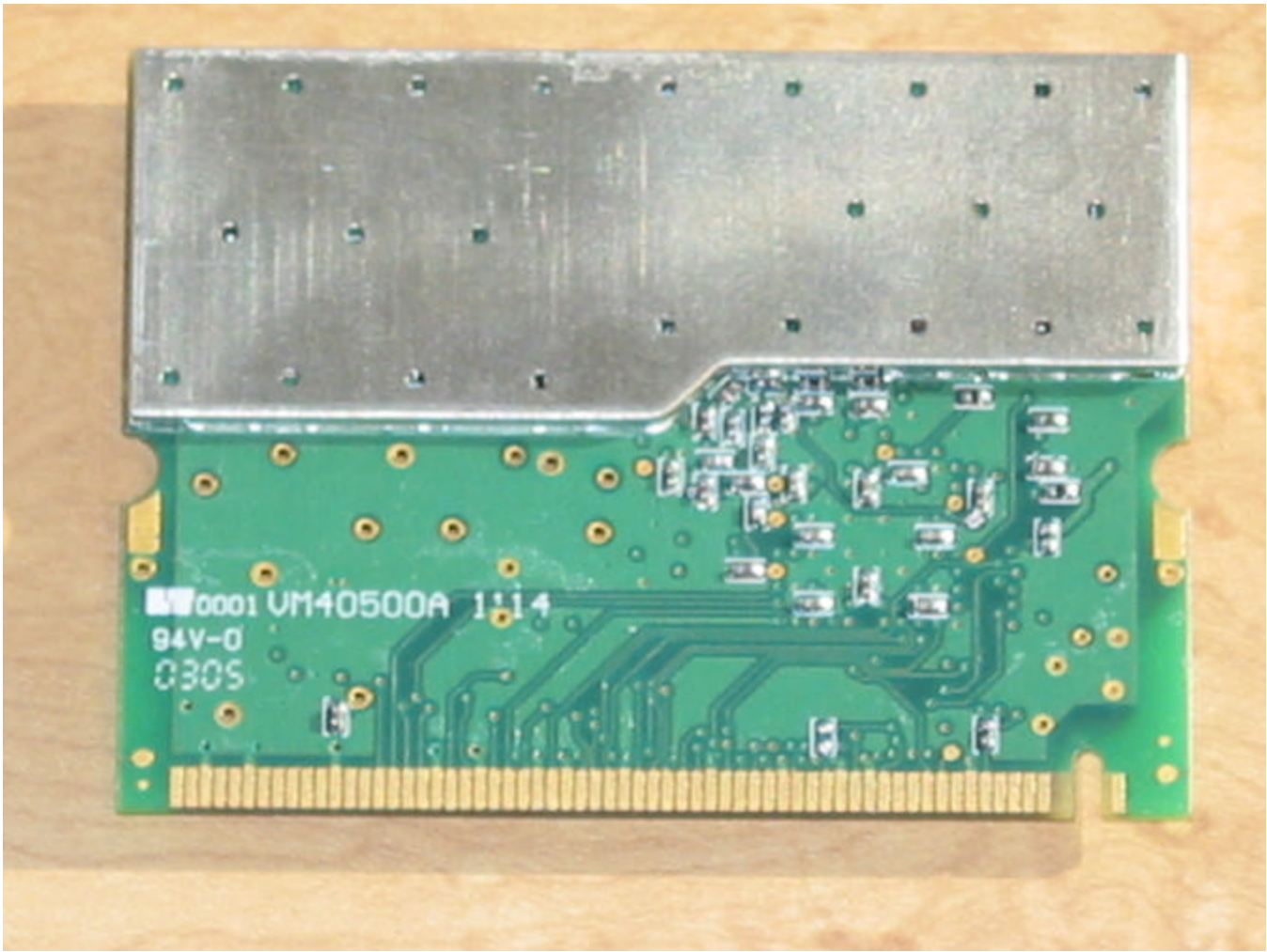
IEEE802.11 mini PCI module rear



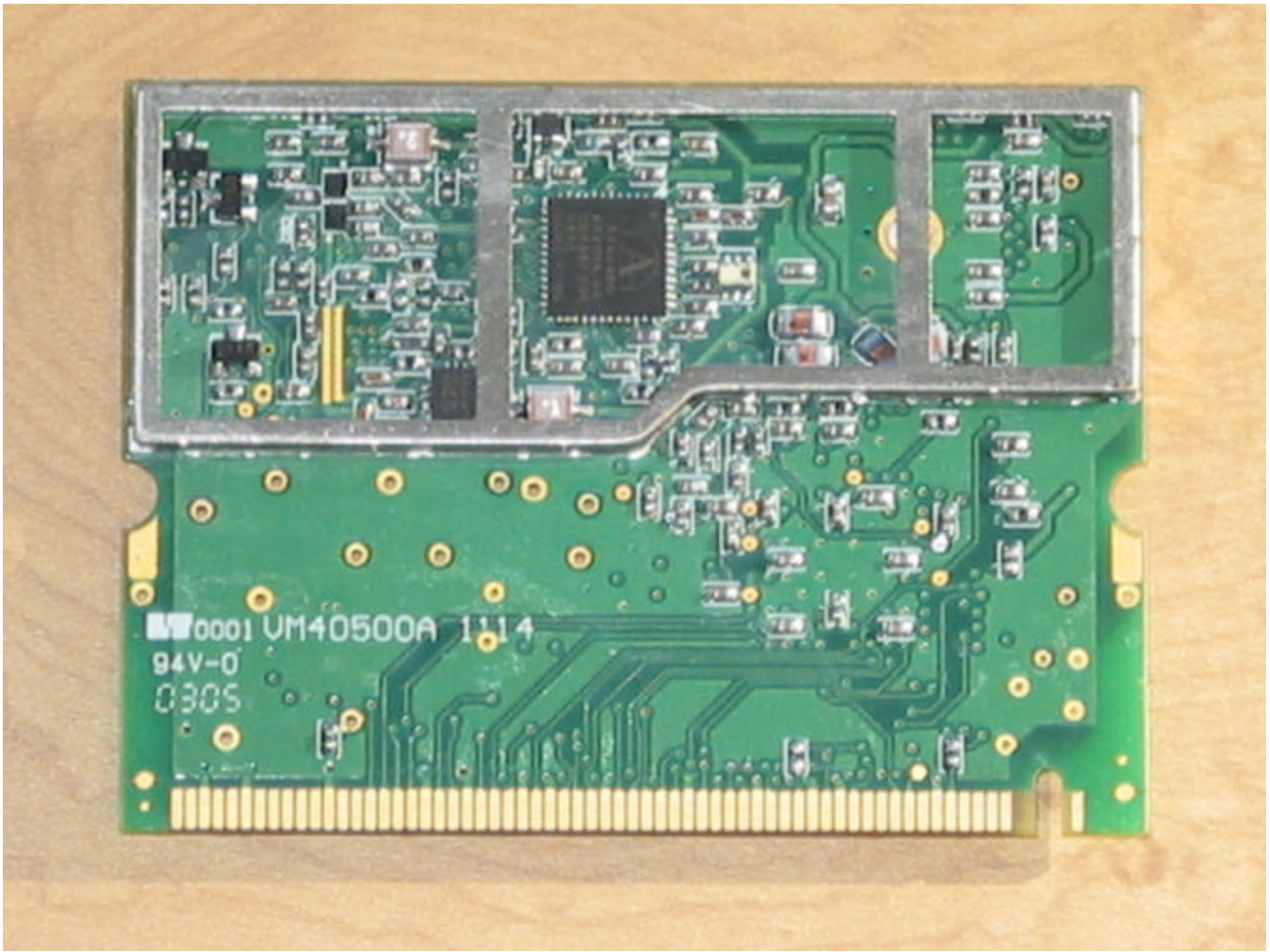
IEEE802.11 mini PCI module, covering removed



IEEE802.11 mini PCI module, shield removed



IEEE802.11 mini PCI module, covering removed, back



IEEE802.11 mini PCI module, shield removed, back