



To: Mr. Tim Johnson, American TCB
From: David Waitt, Airespace
Subject: Inquiries regarding Certification application for FCC ID QTZVAP1200
Date: 1 April 2003

Tim,
Below are the replies to your additional inquiries regarding this application. If something is unclear, or if you have additional concerns, please contact me.

Best Regards,

A handwritten signature in black ink, appearing to read "David Waitt".

David Waitt
Consultant representing Airespace

ATCB 1) Please provide a cover letter explaining the purpose of this application and how the application meets 2.933 of the rules.

Airespace: The cover letter has been uploaded to the ATCB web site.

ATCB 2) Please provide photographs of the antennas. Additionally, please explain the gain of each antenna as one of the data sheets shows a gain of +5 to +9 dBi.

Airespace: A pdf file has been uploaded to the ATCB site that contains the antenna data sheets as well as pictures of the actual antennas. It is intended that the antennas used with the product will be the 3 dBi and 5 dBi antennas. The 9dBi antenna shown on the data sheet will not be used as it was not tested for compliance with this product

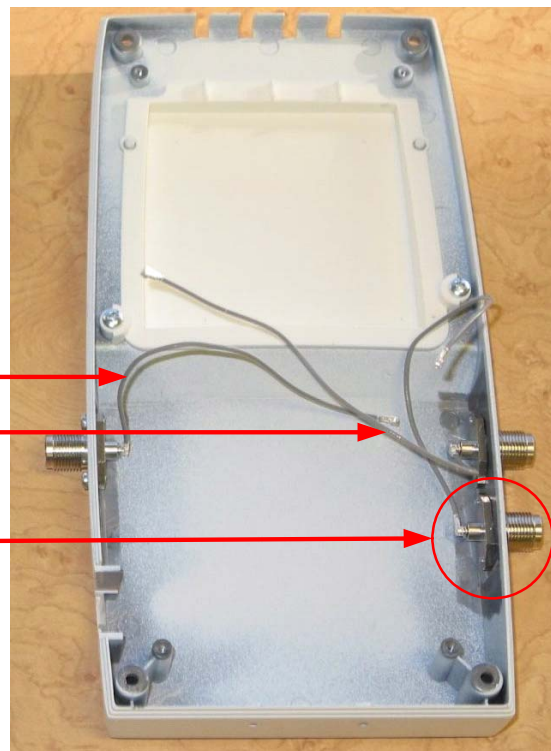
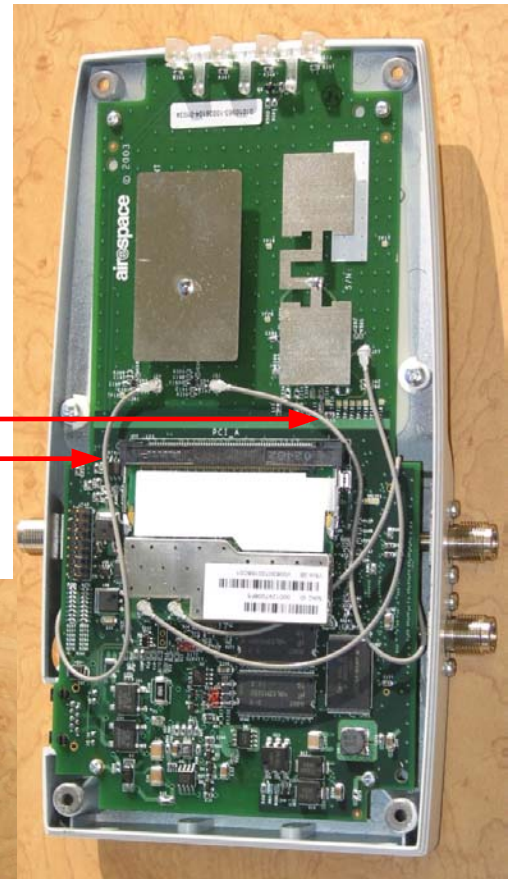
ATCB 3) Please provide RF exposure information regarding the external antennas.

Airespace: An additional MPE for the External antennas has been uploaded to the ATCB site.

ATCB 4) This submittal appears to contain information regarding external antennas. However, it is not certain how the external antennas connect internally to the original device. Please explain and provide photographs as necessary.

Airespace: The reverse TNC connectors used to support the use of external 2.4GHz antennas are connected to the main circuit board in the radio via short coaxial cables shown in the photos below. Note that the hardware is in place to support external 5 GHz antennas; however the configuration software does not support use of external 5 GHz antennas. Currently, until authorized by the commission, configuring the radio to operate with external 5GHz antennas is not possible.

These cables connect the main PCB to the external 2.4 GHz antenna connectors



Cables used to connect the main PCB to the 2.4 GHz external antennas connectors

5GHz external antenna connector, in place, but not supported by the configuration software.

ATCB 5) The sample calculation given on page 16 of 18 of the external antenna report does not match the table. Please correct.

Airespace: The sample calculation has been corrected.