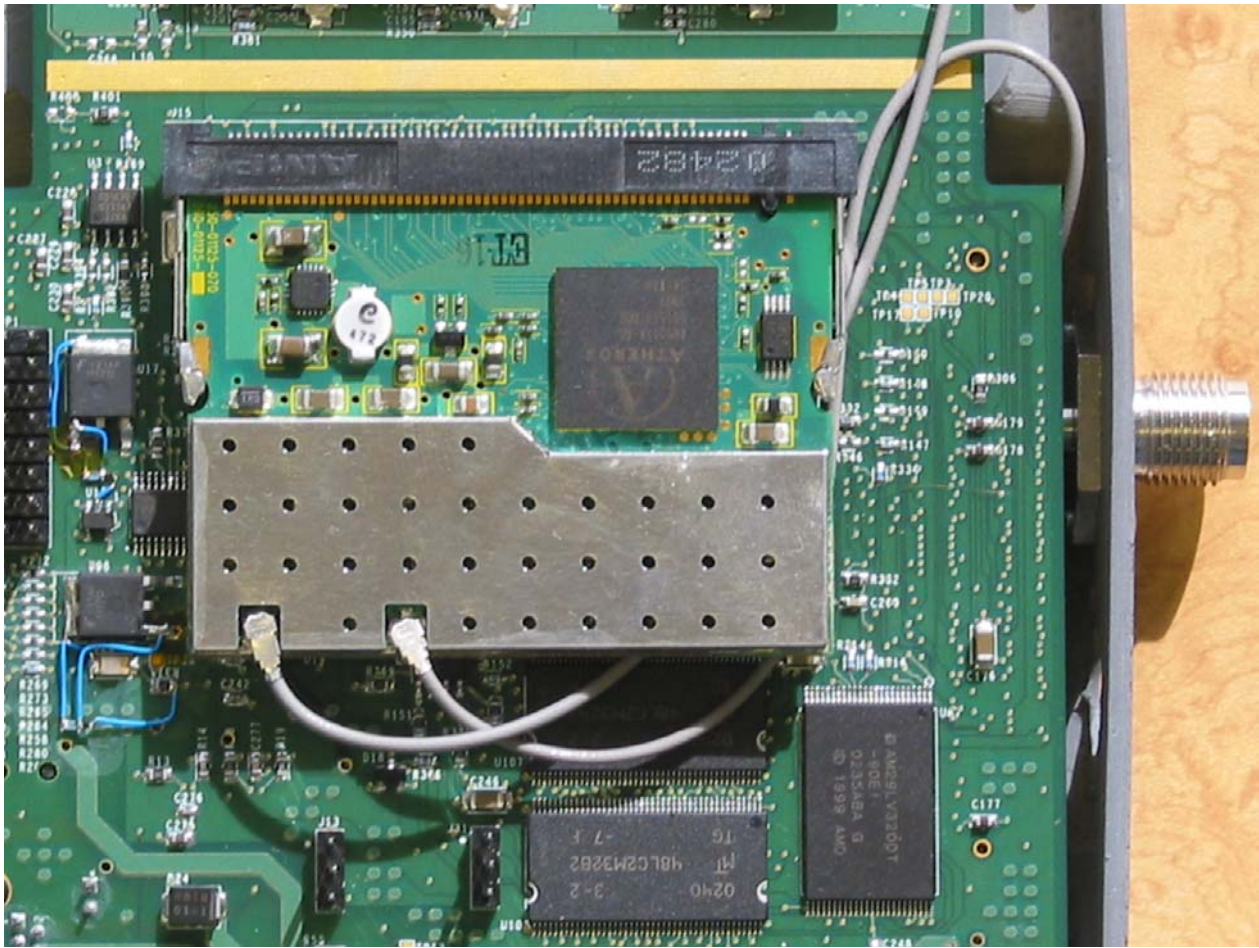
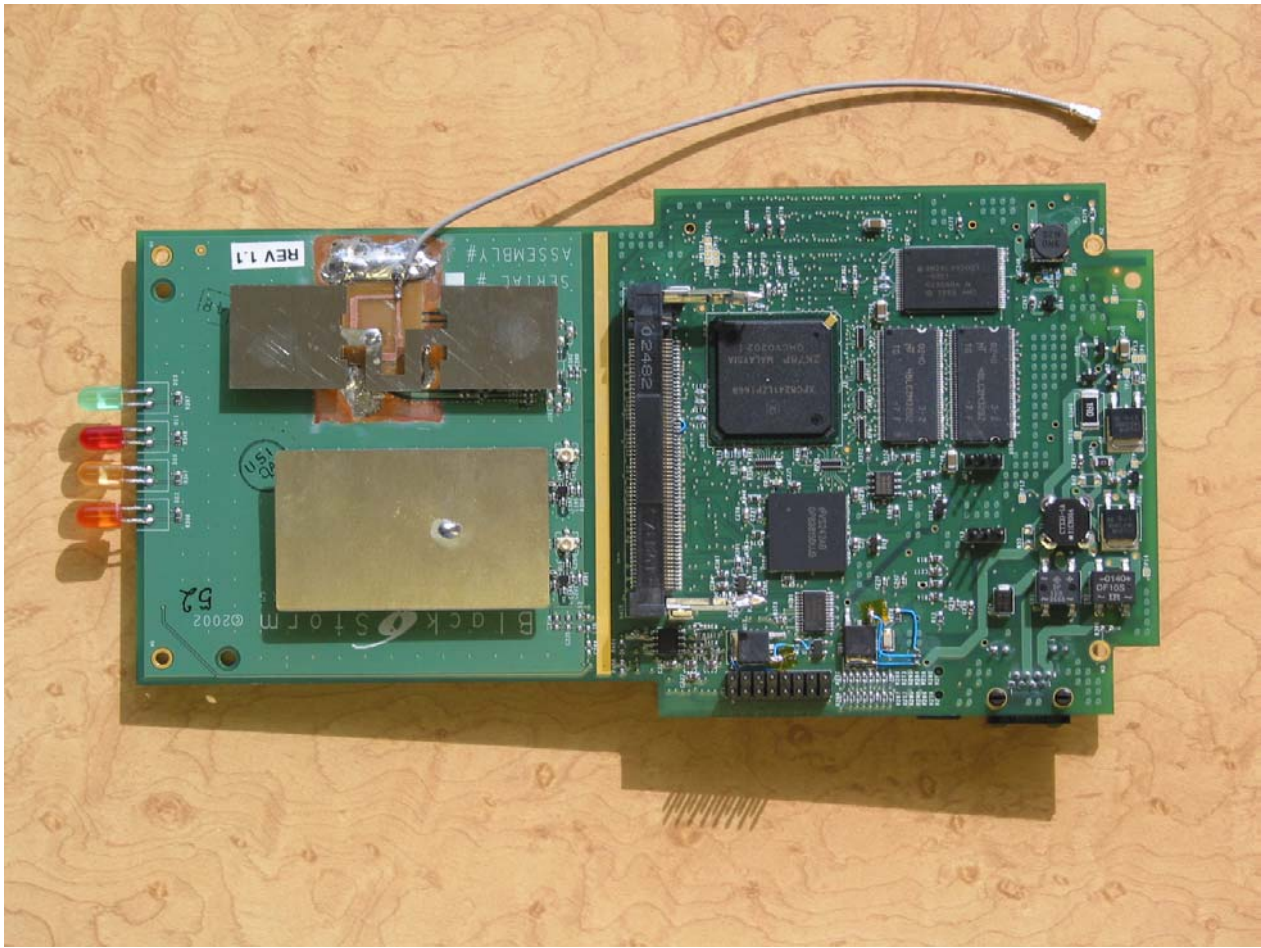


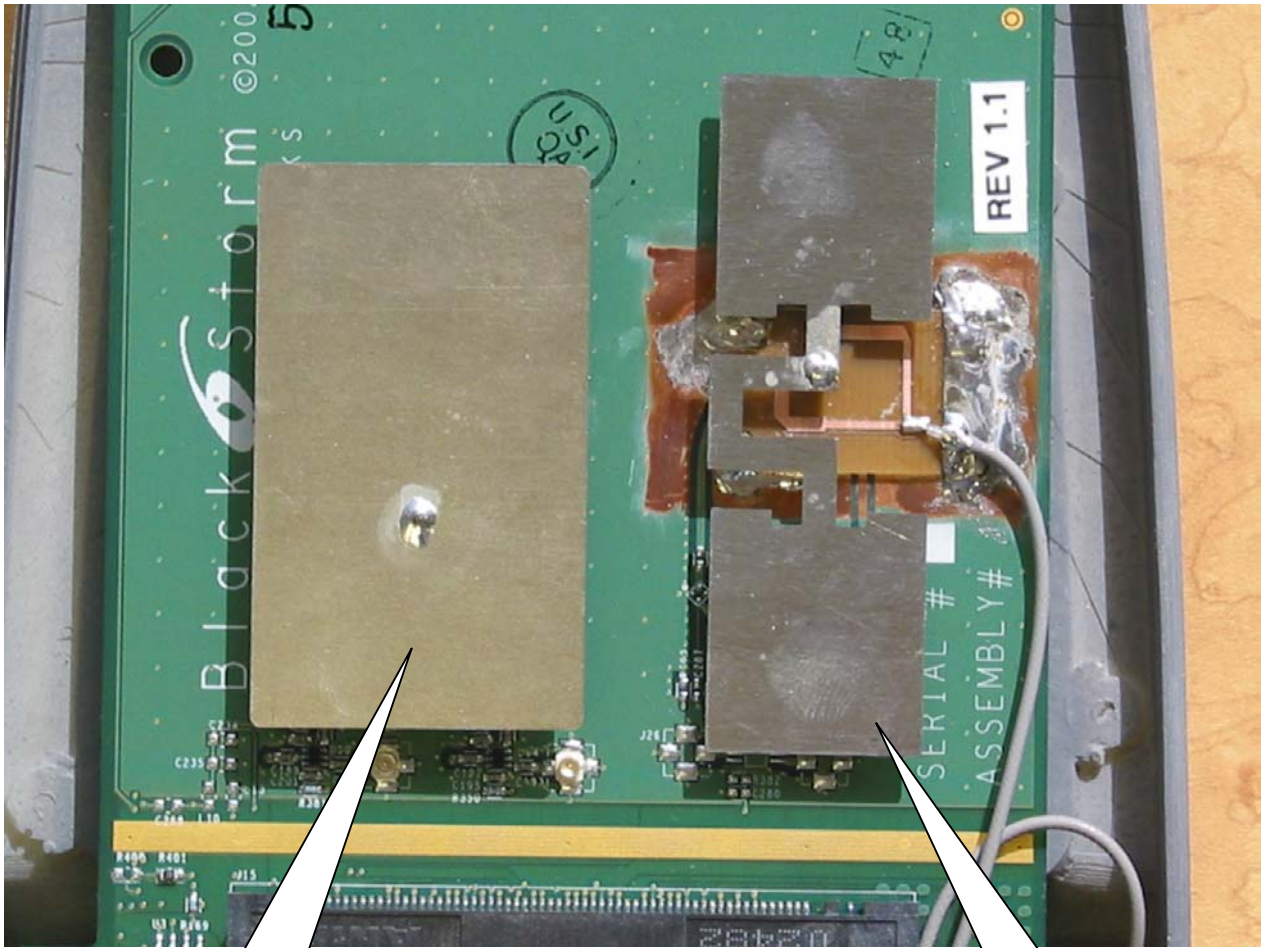
Open LRAD showing Side 1 of main PCB with RF module installed



Close up of installed RF module, Side 1



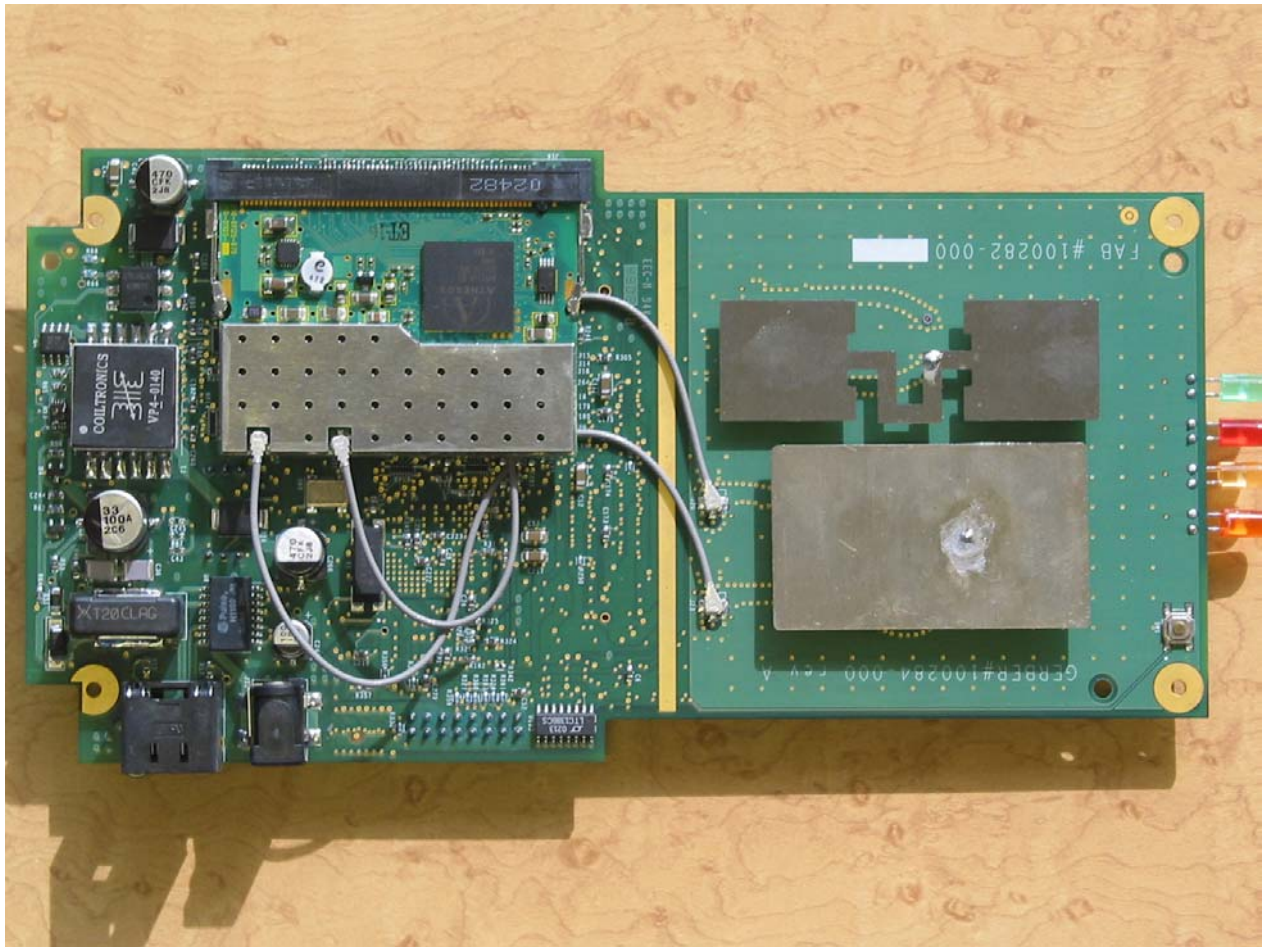
Main PCB, Side 1 removed from housing with RF module also removed



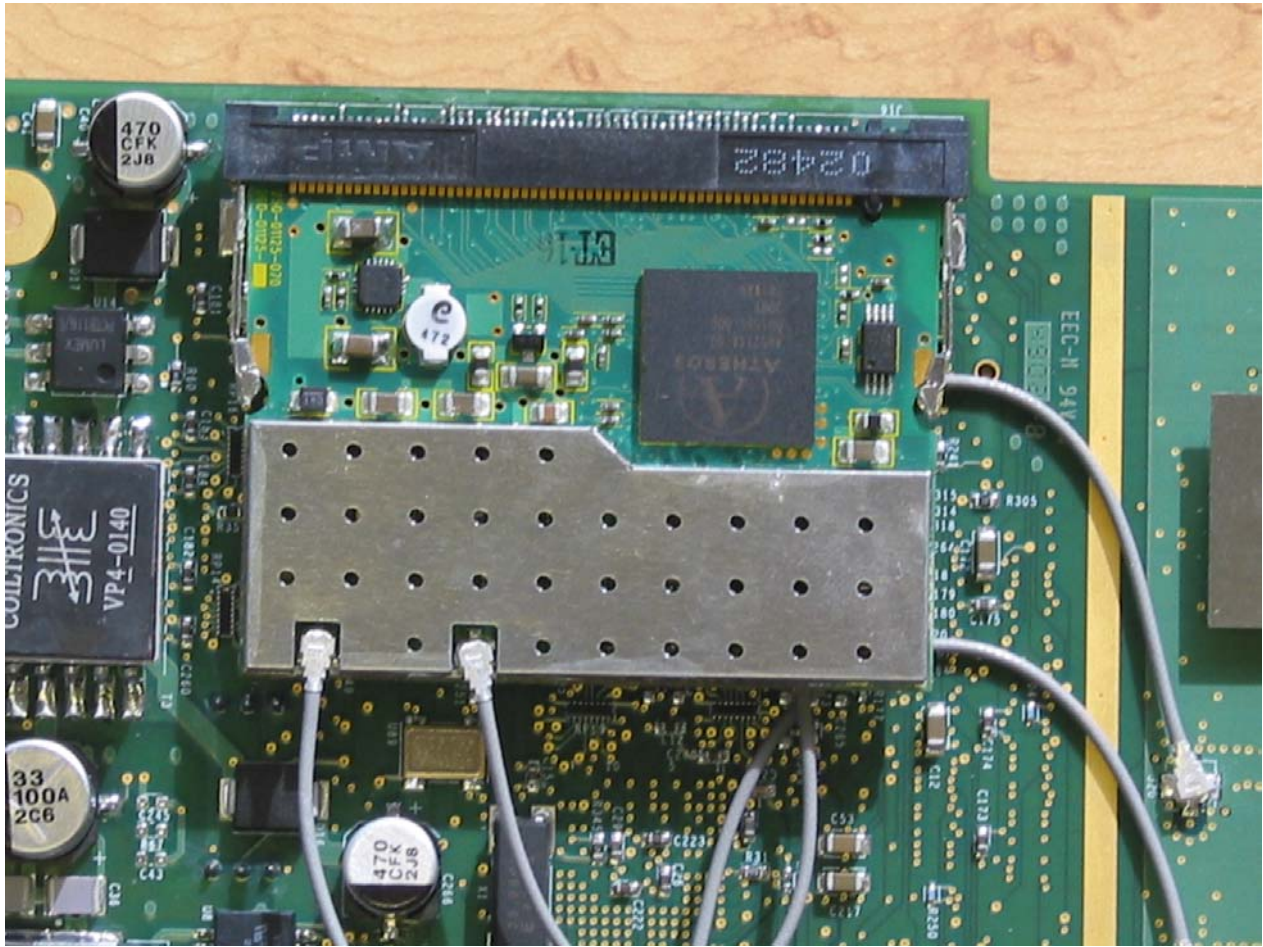
2.4 GHz Antenna,
PCB Side 1

Antenna Detail, Main PCB Side 1

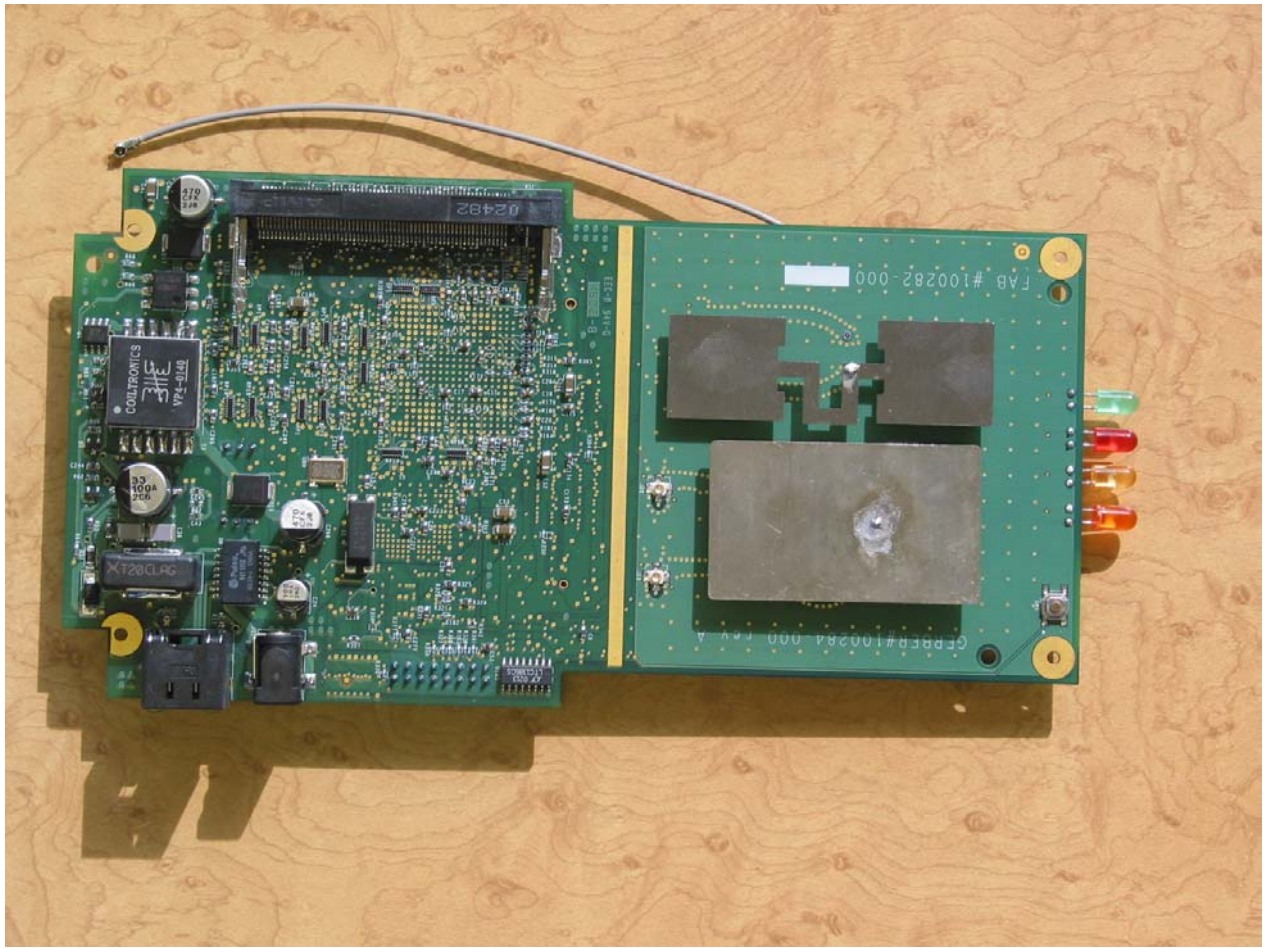
5 GHz Antenna,
PCB Side 1



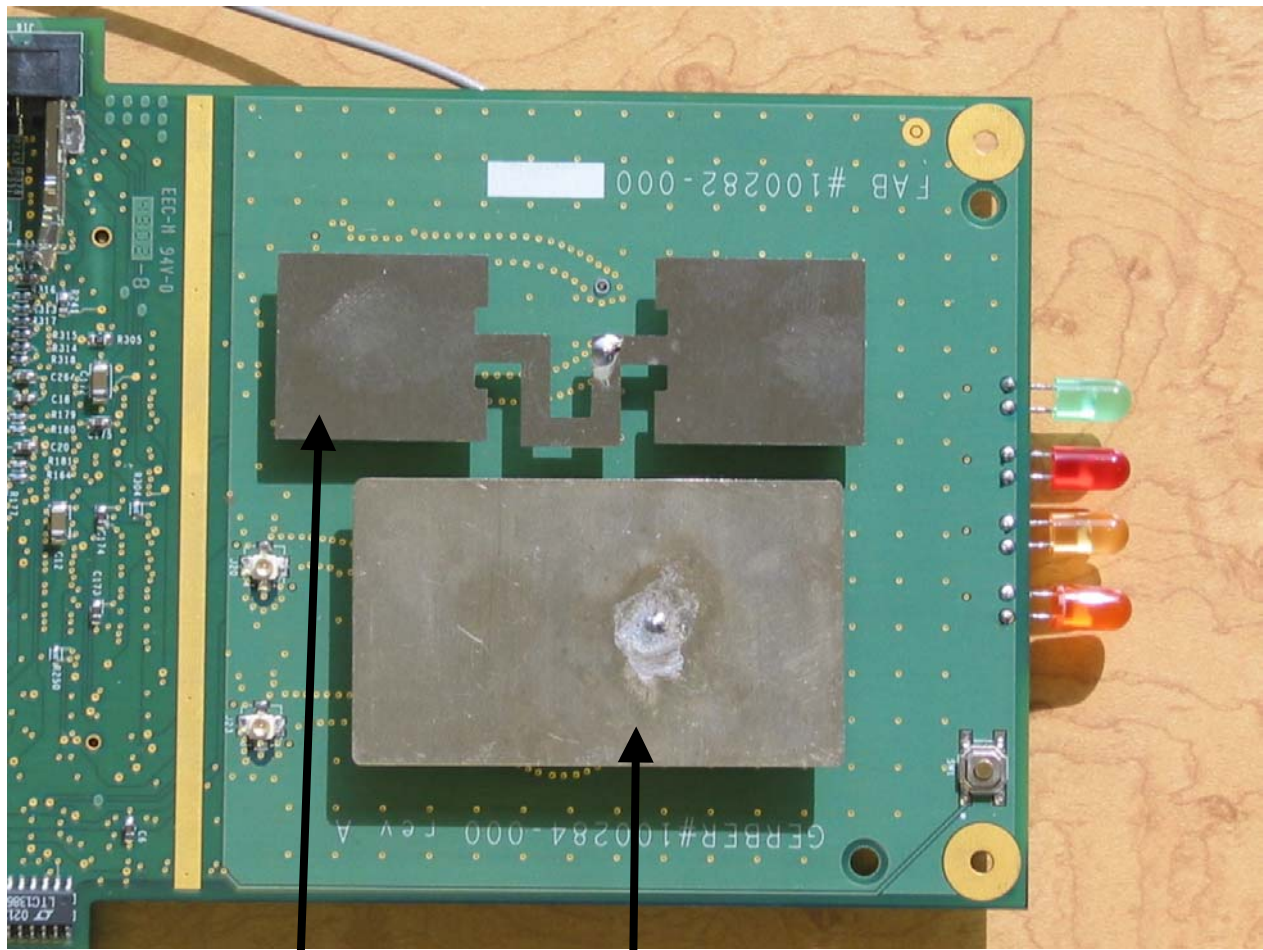
Main PCB, Side 2 with RF Module installed



Detail of RF module installation, Side 2



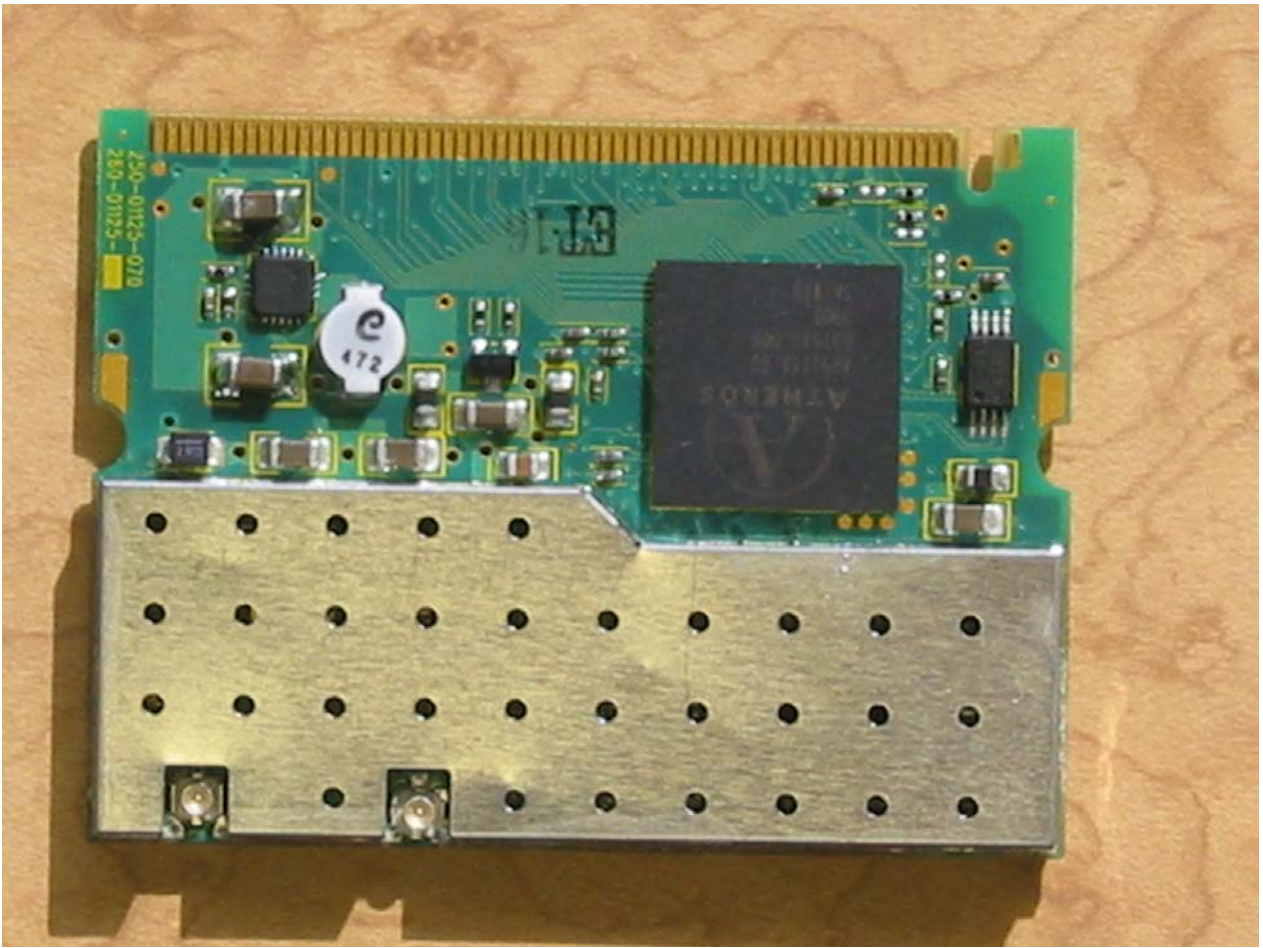
Main PCB, Side 2 with RF Module removed



Antenna detail, Side 2

5 GHz Antenna

2.4 GHz Antenna



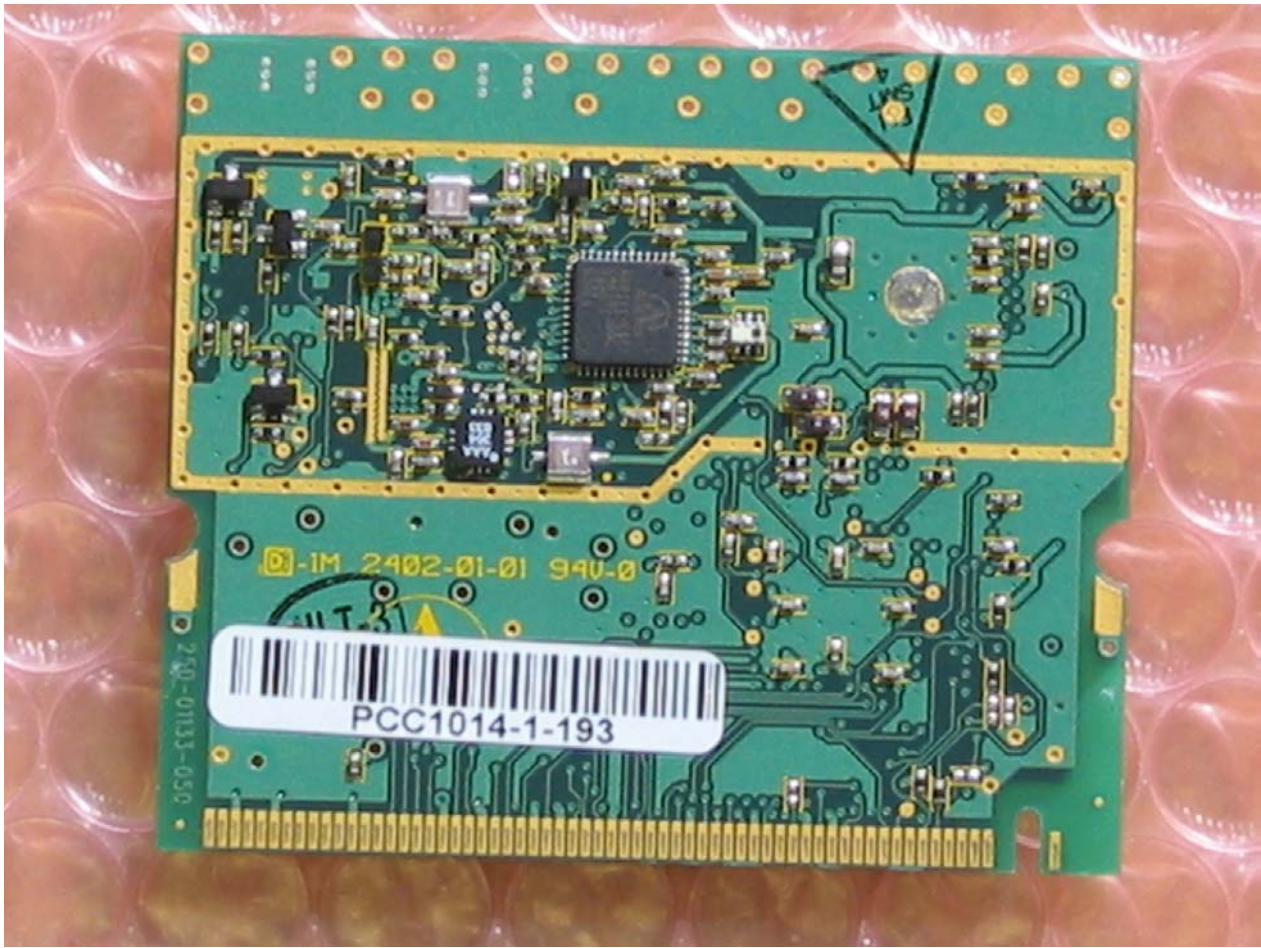
RF Module, Side 1, w/ Shield



RF Module, Side 2, W/ Shield



RF Module, Side 1, w/o shield



RF module, Side 2 w/o Shield