



110 Nortech Parkway
San Jose, California, 95134

FCC Part 15 Certification Application

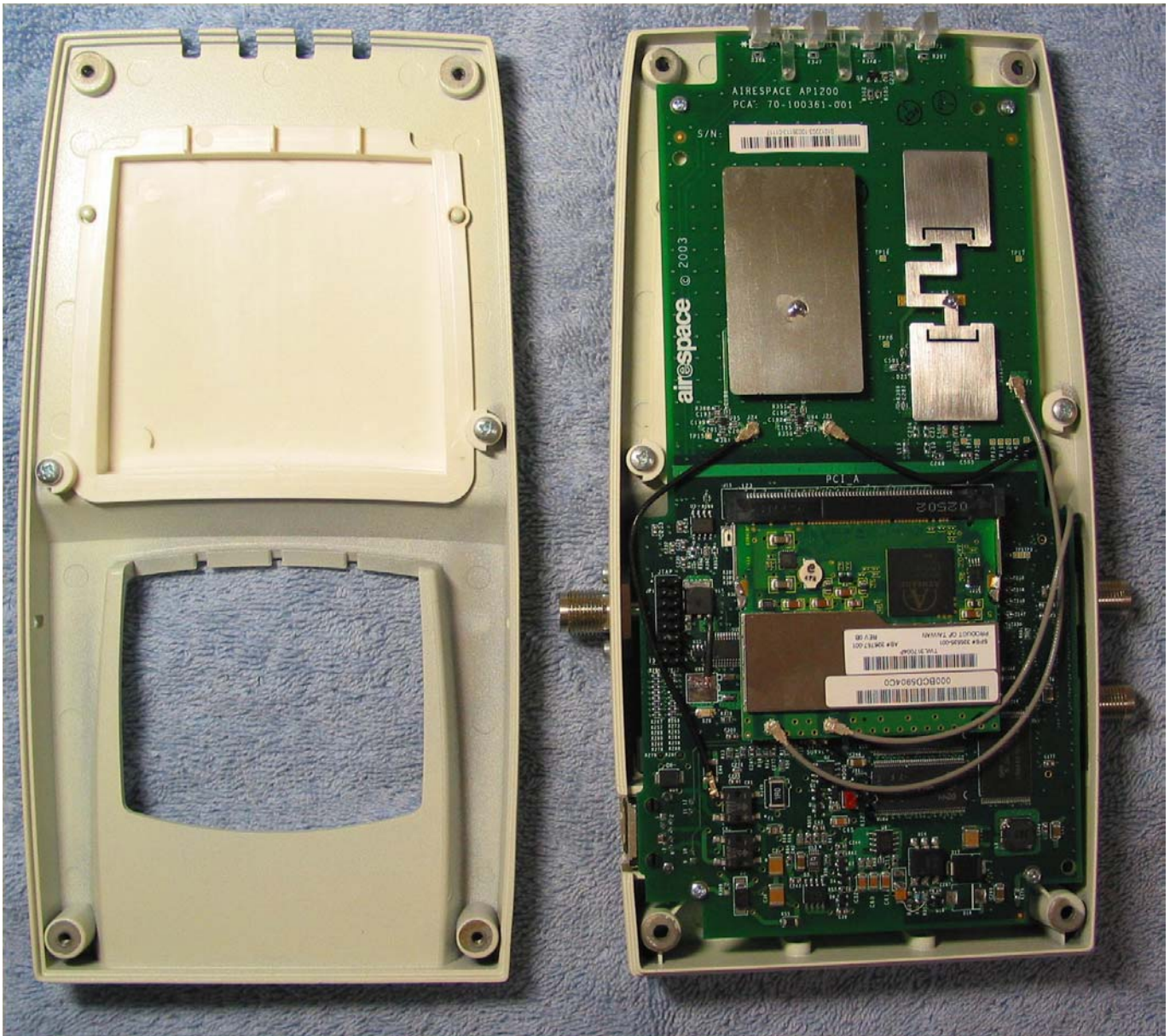
**Internal Product Photos
Airespace Access Point.
Model: 1200
FCC ID: QTZAMAP1200AB**

Prepared by:

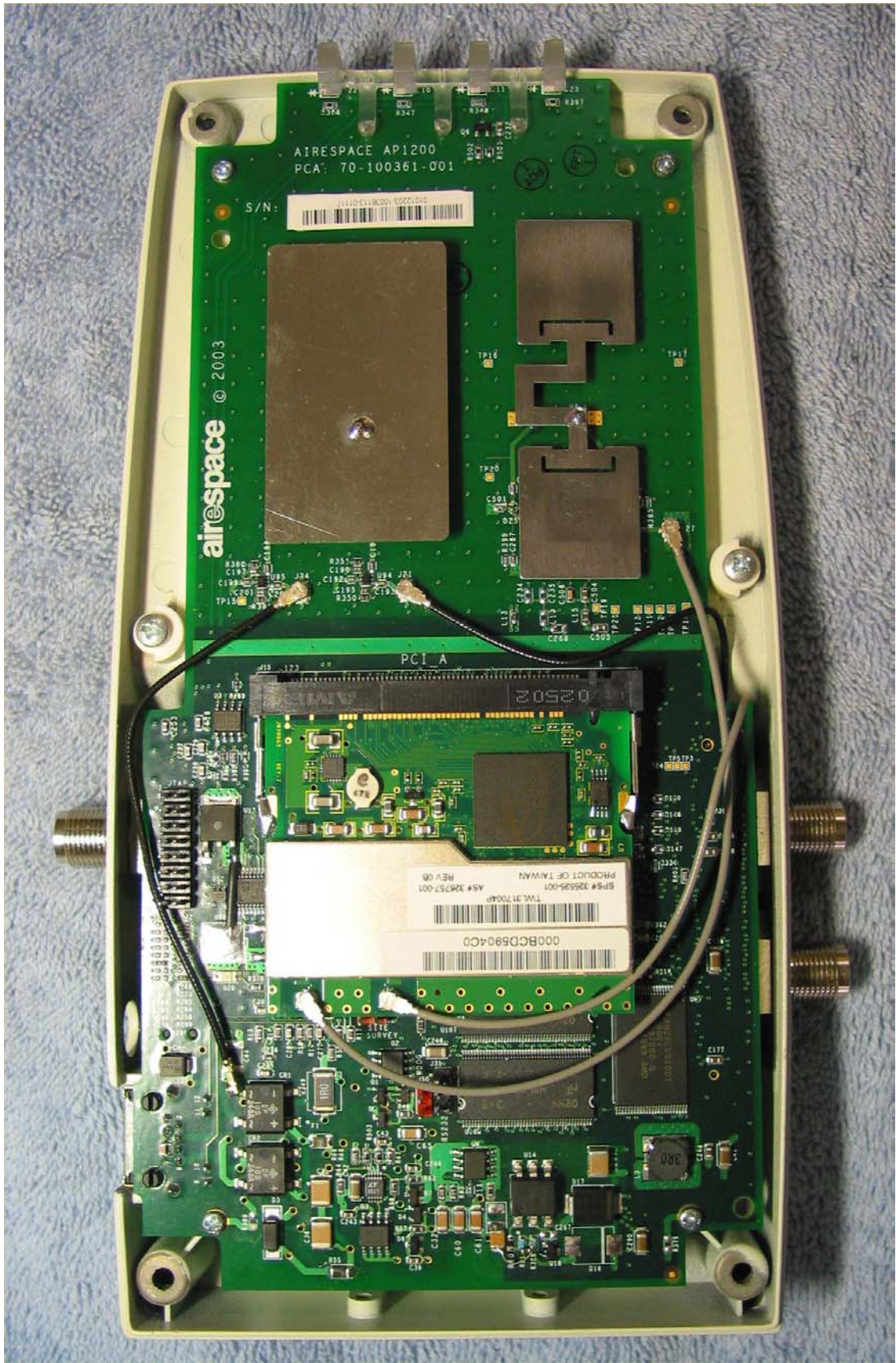
David Waitt
202 Calvert Drive #217
Cupertino, Ca. 95014
david@waitt.us
(408) 832 7053



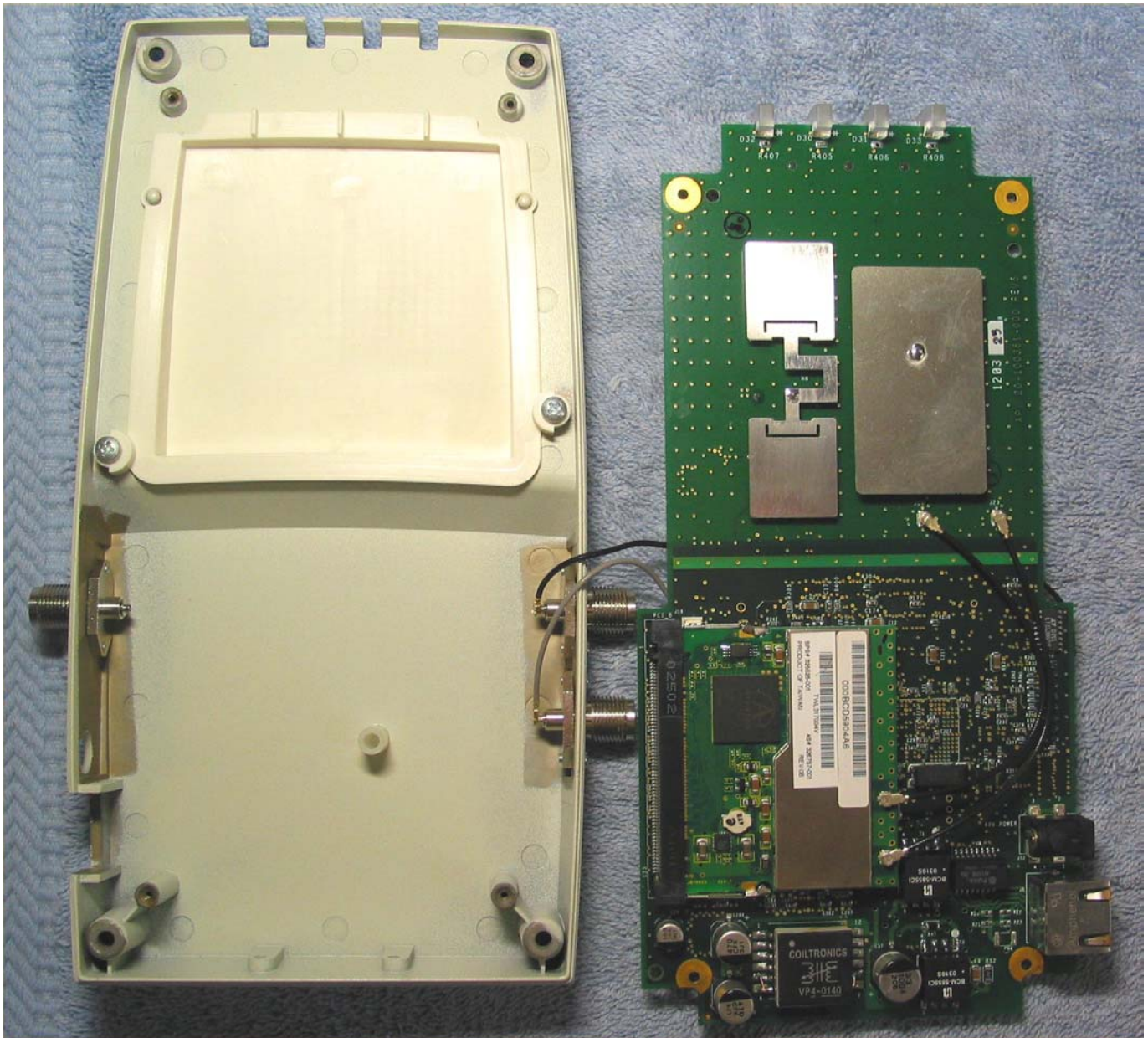
Access point with cover removed



Access point, enclosure open, 802.11 A side shown



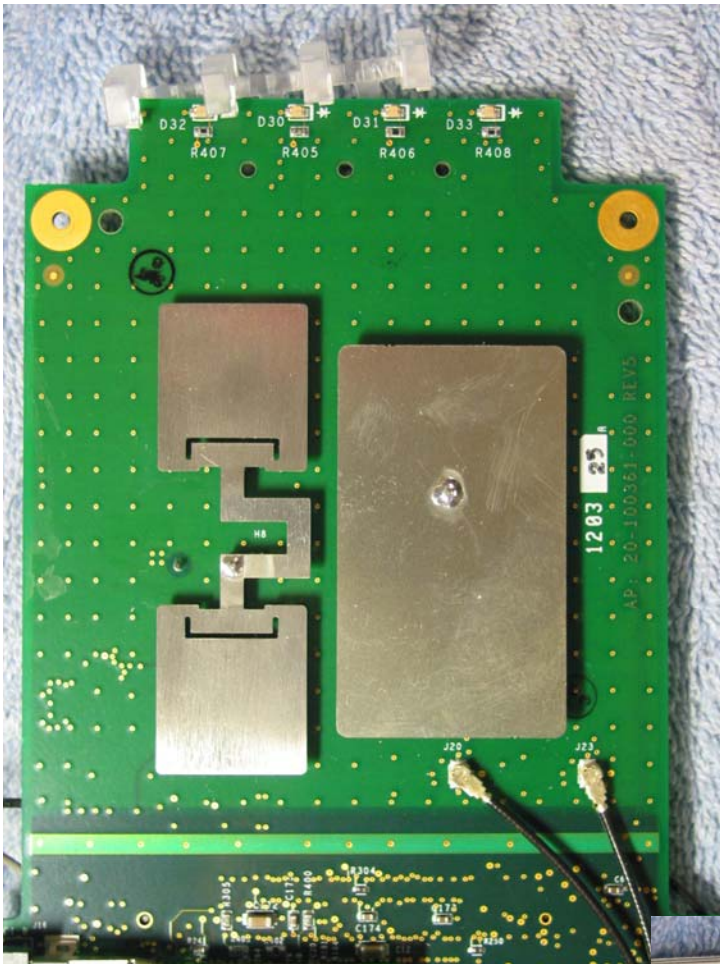
Access point, A side



Access point, B side



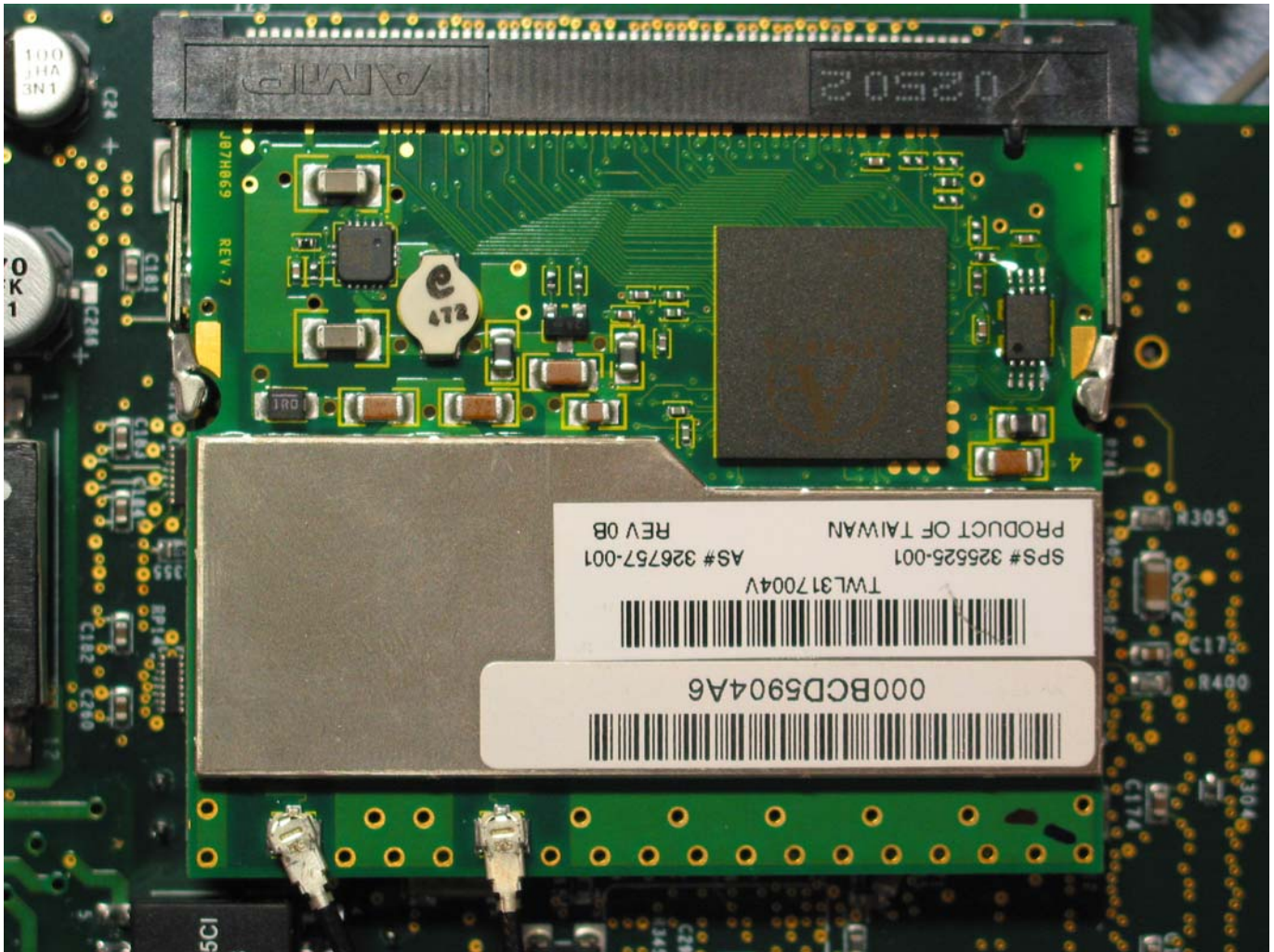
Access point, B Side



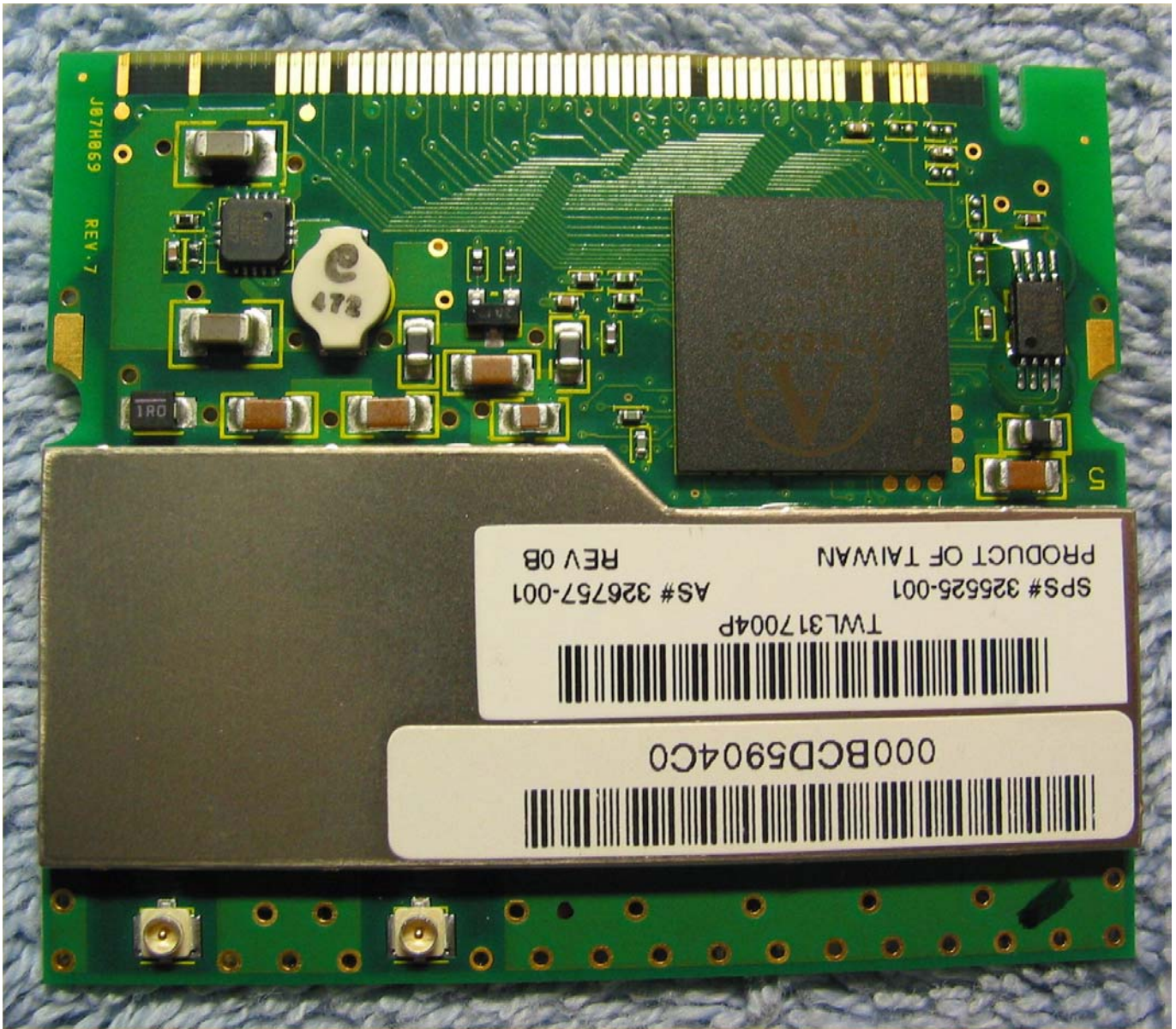
Access point, B side antennas



Access point, A side antennas



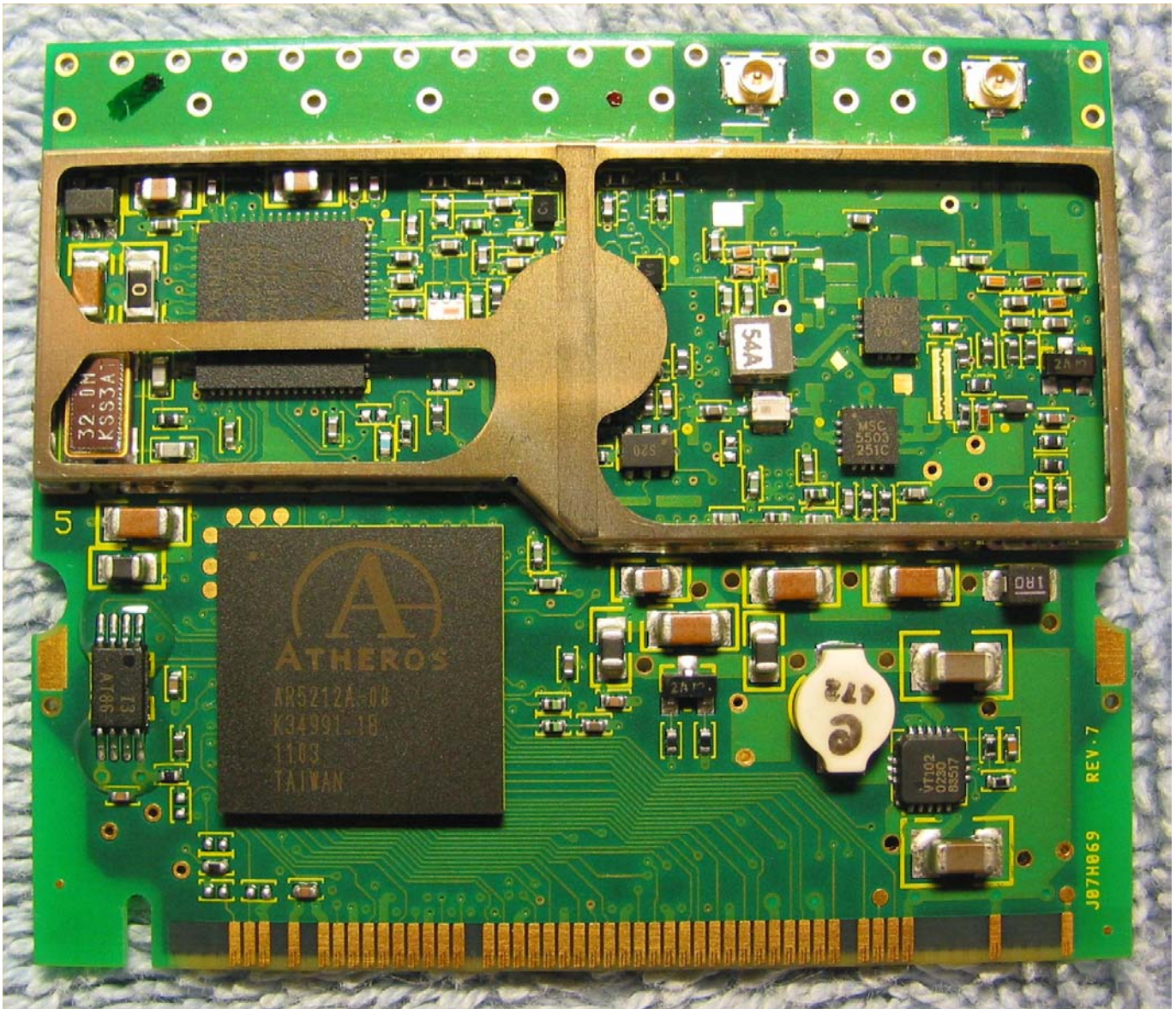
IEEE802.11 Module mini PCI module, Front



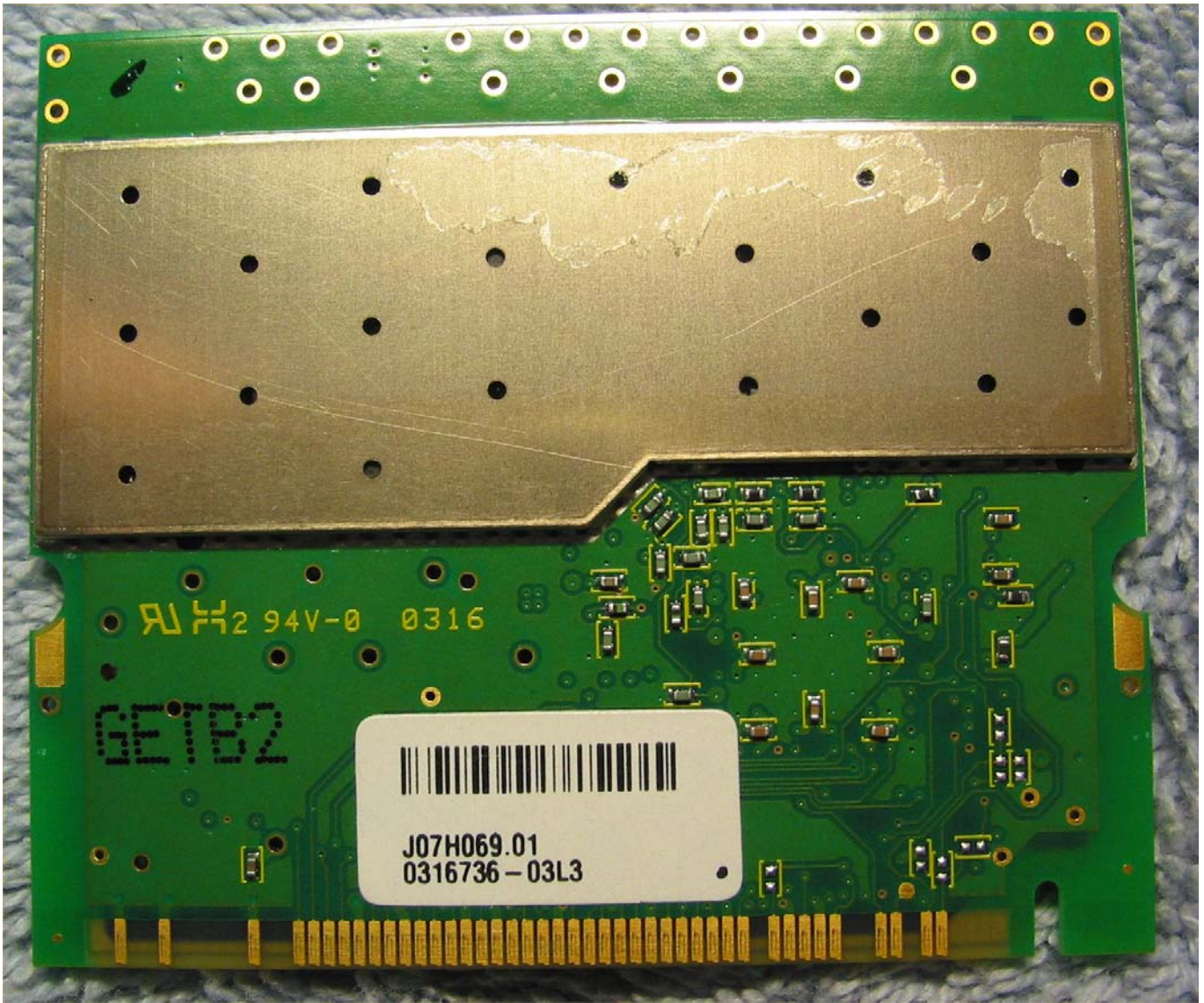
IEEE802.11 Mini PCI module, front



IEEE802.11 mini PCI module, Rear



IEEE 802.11 mini PCI module, shield removed



IEEE 802.11 mini PCI module, Rear, label removed



IEEE 802.11 mini PCI module, Rear, label removed
Shield soldered, not removable.



IEEE 802.11 mini PCI module, Rear, Module FCC ID