



WLC-100M Wireless ISA Module

User's Manual

FCC Statement

Warning: Changes or modifications to this unit not expressly approved by the party responsible for compliance could void the user authority to operate the equipment.

WLC-100M Wireless ISA Module complies with Part 15 of the FCC Rules. Operation is subject to the following two conditions: (1) this device may not cause harmful interference, and (2) this device must accept any interference received, including interference that may cause undesired operation.

The user's manual or instruction manual for an intentional or unintentional radiator shall caution the user that changes or modifications not expressly approved by the party responsible for compliance could void the user's authority to operate the equipment.

NOTE: This equipment has been tested and found to comply with the limits for a Class B digital device, pursuant to Part 15 of the FCC Rules. These limits are designed to provide reasonable protection against harmful interference in a residential installation. This equipment generates, uses and can radiate radio frequency energy and, if not installed and used in accordance with the instructions, may cause harmful interference to radio communications.

However, there is no guarantee that interference will not occur in a particular installation. If this equipment does cause harmful interference to radio or television reception, which can be determined by turning the equipment off and on, the user is encouraged to try to correct the interference by one or more of the following measures:

Reorient or relocate the receiving antenna.

Increase the separation between the equipment and receiver.

Connect the equipment into an outlet on a circuit different from that to which the receiver is needed.

Consult the dealer or an experienced radio/TV technician for help.



CAUTION:

To comply with FCC RF exposure compliance requirements, a separation distance of at least 20 cm must be maintained between the antenna of this device and all persons.

This Transmitter must not be co-located or operating in conjunction with any other antenna

or transmitter

This device is intended only for OEM integrators under the following conditions:

The antenna must be installed such that 20 cm is maintained between the antenna and users. For laptop installations, the antenna must be installed to ensure that the proper spacing is maintained in the event the users places the device in their lap during use (i.e. positioning of antennas must be placed in the upper portion of the LCD panel only to ensure 20 cm will be maintained if the user places the device in their lap for use) and The transmitter module may not be co-located with any other transmitter or antenna. As long as the 2 conditions above are met, further transmitter testing will not be required. However, the OEM integrator is still responsible for testing their end-product for any additional compliance requirements required with this module installed (for example, digital device emissions, PC peripheral requirements, etc.).

IMPORTANT NOTE: In the event that these conditions can not be met (for example certain laptop configurations or co-location with another transmitter), then the FCC authorization is no longer considered valid and the FCC ID can not be used on the final product. In these circumstances, the OEM integrator will be responsible for re-evaluating the end product (including the transmitter) and obtaining a separate FCC authorization.

End Product Labeling

This transmitter module is authorized only for use in devices where the antenna may be installed such that 20 cm may be maintained between the antenna and users (for example access points, routers, wireless ASDL modems, certain laptop configurations, and similar equipment). The final end product must be labeled in a visible area with the following: "Contains **TX FCC ID: QTRWLC10001**".

RF Exposure Manual Information That Must be Included

The users manual for end users must include the following information in a prominent location "IMPORTANT NOTE: To comply with FCC RF exposure compliance requirements, the antenna used for this transmitter must be installed to provide a separation distance of at least 20 cm from all persons and must not be co-located or operating in conjunction with any other antenna or transmitter."

Additional Information That Must be Provided to OEM Integrators

The end user should NOT be provided any instructions on how to remove or install the

device.

Service Center in U.S.A

Company Name : D-Link Corporation.

Company Address: 53 Discovery Drive Irvine, CA 92618, USA

Tel: (949) 788-0805

1. Introduction

The **WLC-100M Wireless module** is the perfect solution for your wireless network applications based on the IEEE 802.11b standard offering a data rate of 11Mbps in a wireless LAN environment.

WLC-100M is designed for Printer Server series, IP Camera series and Internet Video Server gives you wireless access the web and network resource without the wire.

WLC-100M provides high-speed access to network resources and has built-in 40/64-bit and 128 bit of WEP (Wired Equivalent Privacy) data encryption. With Direct Spread Spectrum Signaling (DSSS), domain access control, WEP encryption and group security, the modules will safeguard all your wireless data transmissions from your nosy neighbors.

WLC-100M allows you to take full advantage of your devices mobility with access to real-time information and online services anytime and anywhere.

2. Feature

- ◆ Complies with IEEE 802.11b Standard for 2.4GHz Wireless LAN.
- ◆ Works with All Existing Network Infrastructure.
- ◆ Compatible with Wi-Fi Wireless Products and Services
- ◆ Capable of up to 128-Bit WEP Encryption.
- ◆ Freedom to Roam While staying Connected
- ◆ 11 Mbps High-Speed Transfer Rate
- ◆ Two I-PEX Connectors for External Antenna
- ◆ Support Antenna diversity for Better Sensitivity
- ◆ Lower Power Consumption.

3. Specification

Standard	IEEE 802.11b, Wi-Fi compliant
Host Interface	ISA Interface through 42 pin connector
Antenna Connectors	Two I-PEX connectors for external antenna
Frequency Range	2.412GHz-2.4835GHz 2.412-2.462 GHz(N. America)

	2.412-2.484 GHz(Japan) 2.412-2.472 GHz(Europe ETSI) 2.457-2.462 GHz(Spain) 2.457-2.472 GHz(France)
Number of Selectable Channels	<ul style="list-style-type: none"> ▪ USA, Canada: 11 channels ▪ Europe: 13 channels ▪ Japan : 14 channels
Data rate	1,2,5.5, 11 Mbps
Modulation Technique	Direct Sequence Spread Spectrum (CCK, DQPSK, DBPSK)
Security	0/64/128 bit WEP
Spreading	11 chip Barker sequence
Bit Error rate	Better than 10^{-5}
Media Access Protocol	CSMA/CA(Collision Avoidance) with optional ACK
Output Power	20dBm (Typical)
Sensitivity	Packet Error Rate < 8% 11Mbps < -81dBm 5.5Mbps < -83dBm 2Mbps < -86dBm 1Mbps < -88dBm

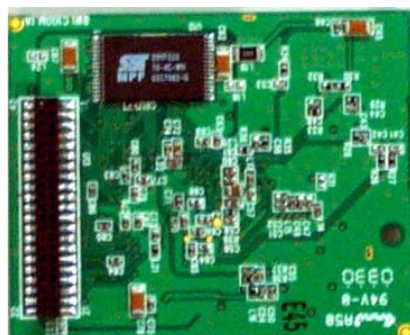
4. Hardware Installation

The following sections in this chapter describe how to install WLC-100M Module

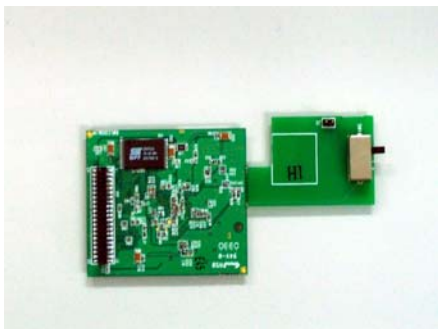
4.1. Installation Overview

WLC-100M wireless module is design for Printer Server series, IP Camera series and Internet Video Server only.

4.1.1. For Printer Server series



4.1.2. For IP Camera series



4.2. Safety Recommendations

The safety guidelines are as follows:

- Keep the board area clear and dust-free before, during, and after installation.
- Keep tools away from walk areas where you and others could fall over them.
- Do not wear loose clothing or jewelry, such as earrings, bracelets, or chains, that could get caught in the board.
- Wear safety glasses if you are working under any conditions that might be hazardous to your eyes.
- Do not perform any action that creates a potential hazard to people or makes the equipment unsafe.
- Never attempt to lift an object that is too heavy for one person to handle.

4.3. Maintaining Safety with Electricity

Warning: Before working on a board or working near power supplies, unplug the power cord on AC units; on DC units, disconnect the power at the circuit breaker.

Follow these guidelines when working on equipment powered by electricity:

- Do not work alone if potentially hazardous conditions exist anywhere in your work space.
- Never assume that power is disconnected from a circuit; always check the circuit.
extension cables, frayed power cords, and missing safety grounds.
- If an electrical accident occurs, proceed as follows:
 - Use caution; do not become a victim yourself.
 - Disconnect power from the system.
 - If possible, send another person to get medical aid. Otherwise, assess the condition of the victim and then call for help.
 - Determine if the person needs rescue breathing or external cardiac compressions; then take appropriate action.

4.4. Installing a WLC-100M

- Remove the WLC-100M module from its protective packaging.
- Avoiding Electrostatic Discharge

Before you install the WLC-100M module, ground yourself by touching a piece of metal to avoid electrostatic discharge (ESD). You should also take the following precautions to prevent damage to the WLC-100M module:

- Keep the WLC-100M module in its antistatic-shielded bag until you are ready to install it.
- Handle the WLC-100M module by its edges.
- Ensure the connector is connected to above Model's board tightly.

