

SAR Compliance Test Report

Test report no.:	FCC_RM-634_07	Date of report:	2011-09-09
Template version:	18.0	Number of pages:	48
Testing laboratory:	TCC Nokia Copenhagen Laboratory Frederikskaj 1790 COPENHAGEN V DENMARK Tel. +45 33 292929 Fax. +45 33 292934	Client:	Nokia Corporation Frederikskaj 1790 COPENHAGEN V DENMARK Tel. +45 33 292929 Fax. +45 33 292934
Responsible test engineer:	Jesper Nielsen	Product contact person:	Shao Xu
Measurements made by:	Preben Runchel & Jesper Nielsen		
Tested device:	RM-634		
FCC ID:	QTKRM-634	IC:	661AD-RM634
Supplement reports:	FCC_RM-632_15 for RM-632 / FCC ID: QTKRM-632 / ID: 661AD-RM632, FCC_RM-634_02, SAR_Photo_RM-634_08		
Testing has been carried out in accordance with:	47CFR §2.1093 Radiofrequency Radiation Exposure Evaluation: Portable Devices FCC OET Bulletin 65 (Edition 97-01), Supplement C (Edition 01-01) Evaluating Compliance with FCC Guidelines for Human Exposure to Radiofrequency Electromagnetic Fields RSS-102 Evaluation Procedure for Mobile and Portable Radio Transmitters with Respect to Health Canada's Safety Code 6 for Exposure of Humans to Radio Frequency Fields IEEE 1528 - 2003 IEEE Recommended Practice for Determining the Peak Spatial-Average Specific Absorption Rate (SAR) in the Human Head from Wireless Communications Devices: Measurement Technique		
Documentation:	The documentation of the testing performed on the tested devices is archived for 15 years at TCC Nokia.		
Test results:	The tested device complies with the requirements in respect of all parameters subject to the test. The test results and statements relate only to the items tested. The test report shall not be reproduced except in full, without written approval of the laboratory.		
Date and signatures:			
For the contents:			

CONTENTS

1. SUMMARY OF SAR TEST REPORT	3
1.1 TEST DETAILS.....	3
1.2 MAXIMUM RESULTS.....	3
1.2.1 Head Configuration.....	3
1.2.2 Body Worn Configuration	4
1.2.3 Maximum Drift	4
1.2.4 Measurement Uncertainty.....	4
2. DESCRIPTION OF THE DEVICE UNDER TEST.....	5
2.1 DESCRIPTION OF THE ANTENNA.....	5
3. TEST CONDITIONS	6
3.1 TEMPERATURE AND HUMIDITY.....	6
3.2 TEST SIGNAL, FREQUENCIES AND OUTPUT POWER.....	6
3.3 TEST CASES AND TEST MINIMISATION	7
4. DESCRIPTION OF THE TEST EQUIPMENT	9
4.1 MEASUREMENT SYSTEM AND COMPONENTS	9
4.1.1 Isotropic E-field Probe Type ES3DV3	10
4.2 PHANTOMS	10
4.3 TISSUE SIMULANTS.....	11
4.3.1 Tissue Simulant Recipes.....	11
4.3.2 System Checking	11
4.3.3 Tissue Simulants used in the Measurements.....	12
5. DESCRIPTION OF THE TEST PROCEDURE	13
5.1 DEVICE HOLDER.....	13
5.2 TEST POSITIONS.....	14
5.2.1 Against Phantom Head.....	14
5.2.2 Body Worn Configuration	14
5.3 SCAN PROCEDURES.....	15
5.4 SAR AVERAGING METHODS.....	15
6. MEASUREMENT UNCERTAINTY	16
7. RESULTS.....	17
APPENDIX A: SYSTEM CHECKING SCANS.....	23
APPENDIX B: MEASUREMENT SCANS.....	26
APPENDIX C: RELEVANT PAGES FROM PROBE CALIBRATION REPORT(S)	47
APPENDIX D: RELEVANT PAGES FROM DIPOLE VALIDATION KIT REPORT(S).....	48

1. SUMMARY OF SAR TEST REPORT

1.1 Test Details

Period of test	2011-08-09 to 2011-09-09
SN, HW and SW numbers of tested device	SN: 353399/04/000504/2, HW: 9021, SW: 071.003, DUT: 23528
Batteries used in testing	BL-4D, DUT: 24341, 24316, 24317
Headsets used in testing	-
Other accessories used in testing	-
State of sample	Prototype unit
Notes	-

1.2 Maximum Results

The maximum measured SAR values for Head configuration and Body Worn configuration are given in section 1.2.1 and 1.2.2 respectively. The device conforms to the requirements of the standard(s) when the maximum measured SAR value is less than or equal to the limit.

1.2.1 Head Configuration

Mode	Ch / f (MHz)	Conducted power	Position	Measured SAR value (1g avg)	Scaled* SAR value (1g avg)	SAR limit (1g avg)	Result
3-slot GPRS850**	251/848.8	27.2 dBm	Left, Cheek	1.00 W/kg	1.12 W/kg	1.6 W/kg	PASSED
WCDMA850	4132/826.4	22.0 dBm	Left, Cheek	0.763 W/kg	0.85 W/kg	1.6 W/kg	PASSED
2-slot GPRS1900**	810/1909.8	26.0 dBm	Left, Cheek	0.478 W/kg	0.55 W/kg	1.6 W/kg	PASSED
WCDMA1900**	9538/1907.6	22.0 dBm	Right, Cheek	0.978 W/kg	1.10 W/kg	1.6 W/kg	PASSED
WLAN2450**	7/2442.0	18.0 dBm	Left, Cheek	0.233 W/kg	0.26 W/kg	1.6 W/kg	PASSED
3-slot GPRS850 + WLAN2450**	-	-	Right, Cheek	1.01 W/kg	1.13 W/kg	1.6 W/kg	PASSED
WCDMA850 + WLAN2450	-	-	Left, Cheek	0.779 W/kg	0.87 W/kg	1.6 W/kg	PASSED
2-slot GPRS1900 + WLAN2450**	-	-	Left, Cheek	0.478 W/kg	0.55 W/kg	1.6 W/kg	PASSED
WCDMA1900 + WLAN2450**	-	-	Right, Cheek	0.978 W/kg	1.10 W/kg	1.6 W/kg	PASSED

1.2.2 Body Worn Configuration

Mode	Ch / f (MHz)	Conducted power	Separation distance	Measured SAR value (1g avg)	Scaled* SAR value (1g avg)	SAR limit (1g avg)	Result
3-slot GPRS850**	251/848.8	27.2 dBm	1.5 cm	0.722 W/kg	0.81 W/kg	1.6 W/kg	PASSED
WCDMA850	4132/826.4	22.0 dBm	1.5 cm	0.614 W/kg	0.69 W/kg	1.6 W/kg	PASSED
2-slot GPRS1900**	810/1909.8	26.0 dBm	1.5 cm	0.576 W/kg	0.65 W/kg	1.6 W/kg	PASSED
WCDMA1900**	9538/1907.6	22.0 dBm	1.5 cm	1.20 W/kg	1.34 W/kg	1.6 W/kg	PASSED
WLAN2450**	7/2442.0	18.0 dBm	1.5 cm	0.073 W/kg	0.08 W/kg	1.6 W/kg	PASSED
3-slot GPRS850 + WLAN2450**	-	-	1.5 cm	0.724 W/kg	0.81 W/kg	1.6 W/kg	PASSED
WCDMA850 + WLAN2450	-	-	1.5 cm	0.626 W/kg	0.70 W/kg	1.6 W/kg	PASSED
2-slot GPRS1900 + WLAN2450**	-	-	1.5 cm	0.576 W/kg	0.65 W/kg	1.6 W/kg	PASSED
WCDMA1900 + WLAN2450**	-	-	1.5 cm	1.20 W/kg	1.34 W/kg	1.6 W/kg	PASSED

* SAR values are scaled up by 12% to cover measurement drift. As a consequence of this upwards correction of the SAR values, the contribution of measurement drift to the overall measurement uncertainty (Section 6) is reduced to zero.

**SAR data taken from report FCC_RM-632_15 for RM-632 / FCC ID: QTKRM-632 / ID: 661AD-RM632.

1.2.3 Maximum Drift

Maximum drift covered by 12% scaling up of the SAR values	Maximum drift during measurements
0.5dB	0.48dB

1.2.4 Measurement Uncertainty

Expanded Uncertainty (k=2) 95%	± 25.8%
--------------------------------	---------

2. DESCRIPTION OF THE DEVICE UNDER TEST

Device category	Portable
Exposure environment	General population / uncontrolled

Modes of Operation	Bands	Modulation Mode	Duty Cycle	Transmitter Frequency Range (MHz)
GSM	850 1900	GMSK	1/8	824 – 849 1850 – 1910
GPRS	850 1900	GMSK	1/8 to 4/8	824 – 849 1850 – 1910
EGPRS	850 1900	GMSK / 8PSK	1/8 to 4/8	824 – 849 1850 – 1910
WCDMA	850 (Band V) 1900 (Band II)	-	1	826 – 847 1852 – 1908
HSUPA	850 (Band V) 1900 (Band II)	-	1	826 – 847 1852 – 1908
BT	2450	GFSK	1	2402 – 2480
WLAN b-mode	2450	Up to 11Mbps QPSK	1	2412 – 2462
WLAN g-mode	2450	Up to 54Mbps 64QAM	1	2412 – 2462

Outside of USA and Canada, the transmitter of the device is capable of operating also in GSM/GPRS/EGPRS900, GSM/GPRS/EGPRS1800 and WCDMA2100 bands which are not part of this filing.

2.1 Description of the Antenna

The device has internal antennas for both cellular and WLAN use. The cellular antenna is located at the bottom underneath the back cover. The WLAN antenna is located at the top underneath the back cover.

3. TEST CONDITIONS

3.1 Temperature and Humidity

Ambient temperature (°C):	20.5 – 22.5
Ambient humidity (RH %):	35 – 55

3.2 Test Signal, Frequencies and Output Power

The device was put into operation by using, a call tester. Communication between the device and the call tester was established by air link.

The device output power was set to maximum power level for all tests; a fully charged battery was used for every test sequence.

The transmission mode of the device in all WCDMA tests was configured to 12.2kbps RMC with all TPC bits set as “1”.

In all operating bands the measurements were performed on lowest, middle and highest channels.

The radiated output power of the device was measured by a separate test laboratory on the same unit(s) as used for SAR testing. The results are given in the EMC report supporting this application.

The number of test cases reported in this document has been minimised based on the earlier testing in FCC_RM-634_02. Some of the SAR results given in this report are taken from FCC_RM-632_15 for RM-632 / FCC ID: QTKRM-632 / ID: 661AD-RM632. The difference between RM-632 and RM-634 is that RM-634 has had WCDMA900 components removed, but WCDMA850 components added.

3.3 Test Cases and Test Minimisation

The tested device examined in this report may not incorporate all of the features described in the text that follows, but its SAR evaluation will have been subjected to the same considerations and test logic described below.

Whilst it's possible to identify the maximum SAR test cases from inspection of the conducted power levels given in the Results tables (Section 7), different modes in the same band and multi-slot transmit GSM/GPRS modes can create some difficulties. Therefore the sequence of the SAR tests made in evaluating this device has used test logic that is based on measured SAR values. Comparison of measured SAR values in this way, can also allow some test minimization (i.e. test elimination) to be made.

For example, when SAR testing multi-slot GSM/GPRS/EGPRS modes, it is an inefficient use of test resources to fully SAR test every test configuration in each of the different modes as these modes have a fixed power relationship between them that is the same, irrespective of the test configuration. In the case of multi-slot GSM/GPRS modes, a single comparative SAR test - using the same test channel and test configuration - is made in each of the n-slot modes; the mode with the highest measured SAR value is then subjected to full SAR testing in all test configurations. These comparative SAR tests (same frequency, same test configuration) are regarded as extremely accurate as they are relative tests in which the tested device changes neither its frequency nor its position between tests. For different modes that operate in the same band and use the same antenna e.g. GSM/GPRS850 and WCDMA850, full SAR testing is carried out in the GSM/GPRS850 mode but WCDMA850 testing is limited to 3 channel testing in the maximum SAR test configuration for GSM/GPRS850.

Multi-slot SAR testing against the Head is always performed whenever such a device offers Push to Talk over cellular with the internal earpiece active, Dual Transfer Mode (i.e. the ability to transmit voice and data simultaneously using the same transmitter) or has WLAN (which enables a Voice over IP call to take place whilst the device can simultaneously transmit data on a cellular band). Whenever a device has an intended multi-slot use against the head, it is also Head SAR tested in EGPRS mode. It should be noted that EGPRS transmit modes can have either GMSK or 8PSK modulation but, when tested, only 8PSK EGPRS will appear explicitly in the results tables, as GMSK EGPRS mode has identical time-averaged power to the reported GPRS mode.

Devices that have flips or slides are fully SAR tested in all device configurations consistent with their intended usage. For example, flip phones that can receive a call in closed mode are SAR tested against the head in both open and closed configurations. Similarly, slide phones are fully SAR tested in all slide configurations in which calls are intended to be made or received.

In the results tables in Section 7, the maximum SAR value for the ‘basic’ tests (i.e. left cheek, left tilt, right cheek and right tilt in Head SAR testing; with and without headset with the back &/or display side facing the flat phantom in Body SAR testing) is bolded for each band. In some cases, after full testing of the basic SAR test configurations has been completed, additional checking SAR tests are made. These checking tests are always based on the bolded result from the ‘basic’ testing. When the SAR value of a checking test exceeds the maximum value from the basic tests, it is also bolded and used as the basis for any further checking tests that might be needed.

Checking tests are largely voluntary and can cover optional batteries, different camera slide positions, optional covers, etc. In the case of optional batteries, if the construction of the optional battery is significantly different to the battery used in the full testing e.g. if the outer can is floating electrically rather than grounded, then the maximum SAR test configuration in each band is tested with the optional battery in 3 channels. For camera slides, if the slide material is metal, then checking tests in 3 channels are again run for the maximum SAR test configuration in each band. For plastic camera slides, SAR checking is only carried out in the channel that provided the maximum SAR value for the original. Optional front and back covers are tested if their shape differs significantly from the original or if their metallic content varies by more than 15% from the original; in the former case, the testing depends on the extent of the physical differences, whereas in the latter case, 3 channel SAR testing is performed in every band in the max SAR test configuration.

4. DESCRIPTION OF THE TEST EQUIPMENT

4.1 Measurement System and Components

The measurements were performed using an automated near-field scanning system, DASY4, manufactured by Schmid & Partner Engineering AG (SPEAG) in Switzerland. The SAR extrapolation algorithm used in all measurements was the 'advanced extrapolation' algorithm.

The following table lists calibration dates of SPEAG components:

Test Equipment	Serial Number	Calibration interval	Calibration expiry
DAE4	339	12 months	2012-02
DAE4	710	12 months	2011-09
E-field Probe ES3DV3	3116	12 months	2012-02
Dipole Validation Kit, D835V2	4d042	24 months	2012-07
DASY4 software	Version 4.7	-	-

Additional test equipment used in testing:

Test Equipment	Model	Serial Number	Calibration interval	Calibration expiry
Signal Generator	SME06	848650/011	36 months	2011-08
Amplifier	ZHL-42W	E012903	-	-
Power Meter	NRP	100808	24 months	2012-04
Power Sensor	NRP-Z51	100410	24 months	2012-04
Call Tester	CMU200	105900	-	-
Vector Network Analyzer	AT8753ES	MY40001091	12 months	2011-08
Dielectric Probe Kit	HP85070B	US33020403	-	-

4.1.1 Isotropic E-field Probe Type ES3DV3

Construction	Symmetrical design with triangular core Interleaved sensors Built-in shielding against static charges PEEK enclosure material (resistant to organic solvents, e.g., butyl diglycol)
Calibration	Calibration certificate in Appendix C
Frequency	10 MHz to 4 GHz (dosimetry); Linearity: ± 0.2 dB (30 MHz to 4 GHz)
Directivity	± 0.2 dB in HSL (rotation around probe axis) ± 0.3 dB in HSL (rotation normal to probe axis)
Dynamic Range	5 μ W/g to > 100 mW/g; Linearity: ± 0.2 dB
Dimensions	Overall length: 330 mm Tip length: 20 mm Body diameter: 12 mm Tip diameter: 3.9 mm
Application	Distance from probe tip to dipole centers: 2.0 mm General dosimetry up to 4 GHz Compliance tests of mobile phones Fast automatic scanning in arbitrary phantoms

4.2 Phantoms

The phantom used for all tests i.e. for both system checks and device testing, was the twin-headed "SAM Phantom", manufactured by SPEAG. The phantom conforms to the requirements of IEEE 1528 - 2003.

System checking was performed using the flat section, whilst Head SAR tests used the left and right head profile sections. Body SAR testing also used the flat section between the head profiles.

The SPEAG device holder (see Section 5.1) was used to position the device in all tests whilst a tripod was used to position the validation dipoles against the flat section of phantom.

4.3 Tissue Simulants

Recommended values for the dielectric parameters of the tissue simulants are given in IEEE 1528 - 2003 and FCC Supplement C to OET Bulletin 65. All tests were carried out using simulants whose dielectric parameters were within $\pm 5\%$ of the recommended values. All tests were carried out within 24 hours of measuring the dielectric parameters.

The depth of the tissue simulant was at least 15.0 cm measured from the ear reference point during system checking and device measurements.

4.3.1 Tissue Simulant Recipes

The following recipe(s) were used for Head and Body tissue simulant(s):

800MHz band		
Ingredient	Head (% by weight)	Body (% by weight)
Deionised Water	51.50	69.25
Tween 20	47.35	30.00
Salt	1.15	0.75

4.3.2 System Checking

The manufacturer calibrates the probes annually. Dielectric parameters of the tissue simulants were measured every day using the dielectric probe kit and the network analyser. A system check measurement was made following the determination of the dielectric parameters of the simulant, using the dipole validation kit. A power level of 250 mW was supplied to the dipole antenna, which was placed under the flat section of the twin SAM phantom. The system checking results (dielectric parameters and SAR values) are given in the table below.

System checking, head tissue simulant

f [MHz]	Description	SAR [W/kg], 1g	Dielectric Parameters		Temp [°C]
			ϵ_r	σ [S/m]	
835	Reference result	2.38	42.1	0.90	
	$\pm 10\%$ window	2.14 – 2.62			
	2011-08-09	2.55	40.4	0.90	21.6
	2011-09-09	2.48	41.1	0.90	22.5

Plots of the system checking scans are given in Appendix A.

4.3.3 Tissue Simulants used in the Measurements

Head tissue simulant measurements

f [MHz]	Description	Dielectric Parameters		Temp [°C]
		ϵ_r	σ [S/m]	
835	Recommended value	41.5	0.90	21.6
	$\pm 5\%$ window	39.4 – 43.6	0.86 – 0.95	
	2011-08-09	40.4	0.90	

Body tissue simulant measurements

F [MHz]	Description	Dielectric Parameters		Temp [°C]
		ϵ_r	σ [S/m]	
835	Recommended value	55.2	0.97	22.5
	$\pm 5\%$ window	52.4 – 58.0	0.92 – 1.02	
	2011-09-09	54.0	0.98	

5. DESCRIPTION OF THE TEST PROCEDURE

5.1 Device Holder

The device was placed in the device holder (illustrated below) that is supplied by SPEAG as an integral part of the Dasy system.



Device holder supplied by SPEAG

A Nokia designed spacer (illustrated below) was used to position the device within the SPEAG holder. The spacer positions the device so that the holder has minimal effect on the test results but still holds the device securely. The spacer was removed before the tests.



Nokia spacer

5.2 Test Positions

5.2.1 Against Phantom Head

Measurements were made in “cheek” positions on the left hand side of the phantom.

The positions used in the measurements were according to IEEE 1528 - 2003 "IEEE Recommended Practice for Determining the Peak Spatial-Average Specific Absorption Rate (SAR) in the Human Head from Wireless Communications Devices: Measurement Techniques".

5.2.2 Body Worn Configuration

The device was placed in the SPEAG holder using the Nokia spacer and placed below the flat section of the phantom. The distance between the device and the phantom was kept at the separation distance indicated in Section 1.2.2 using a separate flat spacer that was removed before the start of the measurements.

Nokia body-worn accessories are commonly available for the separation distance used in this testing.

5.3 Scan Procedures

First, area scans were used for determination of the field distribution. Next, a zoom scan, a minimum of 5x5x7 points covering a volume of at least 30x30x30mm, was performed around the highest E-field value to determine the averaged SAR value. Drift was determined by measuring the same point at the start of the area scan and again at the end of the zoom scan.

5.4 SAR Averaging Methods

The maximum SAR value was averaged over a cube of tissue using interpolation and extrapolation.

The interpolation, extrapolation and maximum search routines within Dasy4 are all based on the modified Quadratic Shepard's method (Robert J. Renka, "Multivariate Interpolation Of Large Sets Of Scattered Data", University of North Texas ACM Transactions on Mathematical Software, vol. 14, no. 2, June 1988, pp. 139-148).

The interpolation scheme combines a least-square fitted function method with a weighted average method. A trivariate 3-D / bivariate 2-D quadratic function is computed for each measurement point and fitted to neighbouring points by a least-square method. For the zoom scan, inverse distance weighting is incorporated to fit distant points more accurately. The interpolating function is finally calculated as a weighted average of the quadratics.

In the zoom scan, the interpolation function is used to extrapolate the Peak SAR from the deepest measurement points to the inner surface of the phantom.

6. MEASUREMENT UNCERTAINTY

Table 6.1 – Measurement uncertainty evaluation

Uncertainty Component	Section in IEEE 1528	Tol. (%)	Prob Dist	Div	C_i	$C_i \cdot U_i$ (%)	ν_i
Measurement System							
Probe Calibration	E2.1	± 5.9	N	1	1	± 5.9	∞
Axial Isotropy	E2.2	± 4.7	R	$\sqrt{3}$	$(1 - c_p)^{1/2}$	± 1.9	∞
Hemispherical Isotropy	E2.2	± 9.6	R	$\sqrt{3}$	$(c_p)^{1/2}$	± 3.9	∞
Boundary Effect	E2.3	± 1.0	R	$\sqrt{3}$	1	± 0.6	∞
Linearity	E2.4	± 4.7	R	$\sqrt{3}$	1	± 2.7	∞
System Detection Limits	E2.5	± 1.0	R	$\sqrt{3}$	1	± 0.6	∞
Readout Electronics	E2.6	± 1.0	N	1	1	± 1.0	∞
Response Time	E2.7	± 0.8	R	$\sqrt{3}$	1	± 0.5	∞
Integration Time	E2.8	± 2.6	R	$\sqrt{3}$	1	± 1.5	∞
RF Ambient Conditions - Noise	E6.1	± 3.0	R	$\sqrt{3}$	1	± 1.7	∞
RF Ambient Conditions - Reflections	E6.1	± 3.0	R	$\sqrt{3}$	1	± 1.7	∞
Probe Positioner Mechanical Tolerance	E6.2	± 0.4	R	$\sqrt{3}$	1	± 0.2	∞
Probe Positioning with respect to Phantom Shell	E6.3	± 2.9	R	$\sqrt{3}$	1	± 1.7	∞
Extrapolation, interpolation and Integration Algorithms for Max. SAR Evaluation	E5	± 3.9	R	$\sqrt{3}$	1	± 2.3	∞
Test sample Related							
Test Sample Positioning	E4.2	± 6.0	N	1	1	± 6.0	11
Device Holder Uncertainty	E4.1	± 5.0	N	1	1	± 5.0	7
Output Power Variation - SAR drift measurement	6.6.3	± 0.0	R	$\sqrt{3}$	1	± 0.0	∞
Phantom and Tissue Parameters							
Phantom Uncertainty (shape and thickness tolerances)	E3.1	± 4.0	R	$\sqrt{3}$	1	± 2.3	∞
Conductivity Target - tolerance	E3.2	± 5.0	R	$\sqrt{3}$	0.64	± 1.8	∞
Conductivity - measurement uncertainty	E3.3	± 5.5	N	1	0.64	± 3.5	5
Permittivity Target - tolerance	E3.2	± 5.0	R	$\sqrt{3}$	0.6	± 1.7	∞
Permittivity - measurement uncertainty	E3.3	± 2.9	N	1	0.6	± 1.7	5
Combined Standard Uncertainty			RSS			± 12.9	116
Coverage Factor for 95%			k=2				
Expanded Uncertainty						± 25.8	

7. RESULTS

The measured Head SAR values for the test device are tabulated below:

850MHz Head SAR results

	Test configuration		SAR, averaged over 1g (W/kg)		
			Ch 128 824.2 MHz	Ch 190 836.6 MHz	Ch 251 848.8 MHz
3-slot GPRS**	Conducted Power		27.2 dBm	27.2 dBm	27.2 dBm
	Left	Cheek	0.971	0.984	1.00
		Tilt	-	-	-
	Right	Cheek	0.879	0.876	0.873
		Tilt	-	-	-
	Test configuration		Ch 4132 826.4 MHz	Ch 4175 835.0 MHz	Ch 4233 846.6 MHz
			22.0 dBm	22.0 dBm	22.0 dBm
WCDMA	Conducted Power		22.0 dBm	22.0 dBm	22.0 dBm
	Left	Cheek	0.763	0.750	0.732
		Tilt	-	-	-
	Right	Cheek	-	-	-
		Tilt	-	-	-

1900MHz Head SAR results**

	Test configuration		SAR, averaged over 1g (W/kg)		
			Ch 512 1850.2 MHz	Ch 661 1880.0 MHz	Ch 810 1909.8 MHz
2-slot GPRS	Conducted Power		26.0 dBm	26.0 dBm	26.0 dBm
	Left	Cheek	0.454	0.471	0.478
		Tilt	-	-	-
	Right	Cheek	-	-	-
		Tilt	-	-	-
	Test configuration		Ch 9262 1852.4 MHz	Ch 9400 1880.0 MHz	Ch 9538 1907.6 MHz
			22.0 dBm	22.0 dBm	22.0 dBm
WCDMA	Conducted Power		22.0 dBm	22.0 dBm	22.0 dBm
	Left	Cheek	-	-	-
		Tilt	-	-	-
	Right	Cheek	0.839	0.825	0.978
		Tilt	-	-	-

2450MHz Head SAR results**

	Test configuration		SAR, averaged over 1g (W/kg)		
			Ch 1 2412.0 MHz	Ch 7 2442.0 MHz	Ch 11 2462.0 MHz
WLAN	Conducted Power		18.0 dBm	18.0 dBm	18.0 dBm
	Left	Cheek	0.176	0.233	0.216
		Tilt	-	0.128	-
	Right	Cheek	-	0.130	-
		Tilt	-	0.109	-

The measured Body SAR values for the test device are tabulated below:

850MHz Body SAR results

	Device orientation	Test configuration	SAR, averaged over 1g (W/kg)		
			Ch 128 824.2 MHz	Ch 190 836.6 MHz	Ch 251 848.8 MHz
3-slot GPRS**		Conducted Power	27.2 dBm	27.2 dBm	27.2 dBm
	Display facing phantom	Without headset	0.684	0.722	0.699
		With headset	-	-	-
	Back facing phantom	Without headset	-	-	-
		With headset	-	-	-
		Test configuration	Ch 4132 826.4 MHz	Ch 4175 835.0 MHz	Ch 4233 846.6 MHz
WCDMA		Conducted Power	22.0 dBm	22.0 dBm	22.0 dBm
	Display facing phantom	Without headset	0.614	0.594	0.560
		With headset	-	-	-
	Back facing phantom	Without headset	-	-	-
		With headset	-	-	-

1900MHz Body SAR results**

	Device orientation	Test configuration	SAR, averaged over 1g (W/kg)		
			Ch 512 1850.2 MHz	Ch 661 1880.0 MHz	Ch 810 1909.8 MHz
2-slot GPRS		Conducted Power	26.0 dBm	26.0 dBm	26.0 dBm
	Display facing phantom	Without headset	-	-	-
		With headset	-	-	-
	Back facing phantom	Without headset	0.576	0.469	0.428
		With headset	-	-	-
	Device orientation	Test configuration	Ch 9262 1852.4 MHz	Ch 9400 1880.0 MHz	Ch 9538 1907.6 MHz
WCDMA		Conducted Power	22.0 dBm	22.0 dBm	22.0 dBm
	Display facing phantom	Without headset	1.20	1.06	1.17
		With headset	0.921	0.843	0.976
	Back facing phantom	Without headset	0.796	0.698	0.763
		With headset	0.787	0.679	0.738

2450MHz Body SAR results**

	Device orientation	Test configuration	SAR, averaged over 1g (W/kg)		
			Ch 1 2412.0 MHz	Ch 7 2442.0 MHz	Ch 11 2462.0 MHz
WLAN		Conducted Power	18.0 dBm	18.0 dBm	18.0 dBm
	Display facing phantom	Without headset	-	0.026	-
		With headset	-	0.028	-
	Back facing phantom	Without headset	0.046	0.070	0.073
		With headset	-	0.065	-

**Simultaneous transmissions: Combined SAR results –
Individual band Max results**

Test configuration	Max. 1g SAR results				
	WLAN**	3-slot GPRS850**	WCDMA850	2-slot GPRS1900**	WCDMA 1900**
Head: Left, Cheek	0.233	1.00	0.763	0.478	-
Head: Left, Tilt	0.128	-	-	-	-
Head: Right, Cheek	0.130	0.879	-	-	0.978
Head: Right, Tilt	0.109	-	-	-	-
Body: Display facing phantom, Without headset	0.026	0.722	0.614	-	1.20
Body: Display facing phantom, With headset	0.028	-	-	-	0.976
Body: Back facing phantom, Without headset	0.073	-	-	0.576	0.796
Body: Back facing phantom, With headset	0.065	-	-	-	0.787

**Simultaneous transmissions: Combined SAR results –
Max + Max combined results**

Test configuration	Max. 1g SAR results			
	3-slot GPRS850 + WLAN**	WCDMA850 + WLAN	2-slot GPRS1900 + WLAN**	WCDMA 1900 + WLAN**
Head: Left, Cheek	1.233	0.779	0.711	-
Head: Left, Tilt	-	-	-	-
Head: Right, Cheek	1.009	-	-	1.108
Head: Right, Tilt	-	-	-	-
Body: Display facing phantom, Without headset	0.748	0.640	-	1.223
Body: Display facing phantom, With headset	-	-	-	1.004
Body: Back facing phantom, Without headset	-	-	0.649	0.869
Body: Back facing phantom, With headset	-	-	-	0.852

The following table gives a more accurate assessment of the SAR values for simultaneous transmission. These values have been calculated using the SPEAG Combined Multiband algorithm, which is based on area scans. It a) converts the 2D area scans into 3D volume scans by assuming frequency-dependent decay characteristics for the E-field, b) sums the SAR values for WLAN2450 and the cellular bands point-by-point and c) calculates the combined average SAR values.

**Simultaneous transmissions: Combined SAR results –
SPEAG Combined Multiband algorithm results**

Test configuration	Max. 1g SAR results			
	3-slot GPRS850 + WLAN**	WCDMA850 + WLAN	2-slot GPRS1900 + WLAN**	WCDMA 1900 + WLAN**
Head: Left, Cheek	1.01	0.779	0.451	-
Head: Left, Tilt	-	-	-	-
Head: Right, Cheek	-	-	-	0.895
Head: Right, Tilt	-	-	-	-
Body: Display facing phantom, Without headset	0.724	0.626	-	-
Body: Display facing phantom, With headset	-	-	-	-
Body: Back facing phantom, Without headset	-	-	0.556	-
Body: Back facing phantom, With headset	-	-	-	1.11

** SAR data taken from FCC_RM-632_15 for RM-632 / FCC ID: QTKRM-632 / ID: 661AD-RM632.

Some of the Combined SAR values in the above table are less than the maximum SAR values for the contributing cellular band. This is due to a) minimal overlap of the SAR distributions of the cellular band with WLAN2450 and b) uncertainties associated with the different methods of calculation. In these cases, the maximum SAR values given for the combined Modes in the Summary table in Section 1.2 are those for the individual cellular band.

Note: Simultaneous Transmission Procedures as described in KDB648474 are not required for this product. The Combined SAR data given in the tables above has been voluntarily calculated.

Plots of the Measurement scans are given in Appendix B.

APPENDIX A: SYSTEM CHECKING SCANS

See the following pages

Date/Time: 2011-08-09 09:12:51

Test Laboratory: TCC Nokia
Type: D835V2; Serial: 4d042

Communication System: CW850

Frequency: 835 MHz; Duty Cycle: 1:1

Medium: Head 850; Medium Notes: Medium Temperature: 21.6 C

Medium parameters used: $f = 835$ MHz; $\sigma = 0.905$ mho/m; $\epsilon_r = 40.4$; $\rho = 1000$ kg/m³

Phantom section: Flat Section

DASY4 Configuration:

- Probe: ES3DV3 - SN3116; Probe Notes:
- ConvF(6.01, 6.01, 6.01); Calibrated: 2011-02-17
- Sensor-Surface: 4mm (Mechanical Surface Detection)
- Electronics: DAE4 Sn710; Calibrated: 2010-09-17
- Phantom: SAM 3; Type: Twin Phantom; Serial: TP-1302
- Measurement SW: DASY4, V4.7 Build 71; Postprocessing SW: SEMCAD, V1.8 Build 184

d=15mm, Pin=250mW/Area Scan (61x121x1): Measurement grid: dx=10mm, dy=10mm

Maximum value of SAR (interpolated) = 2.75 mW/g

d=15mm, Pin=250mW/Zoom Scan (7x7x7) (7x7x7)/Cube 0: Measurement grid: dx=5mm, dy=5mm, dz=5mm

Reference Value = 55.7 V/m

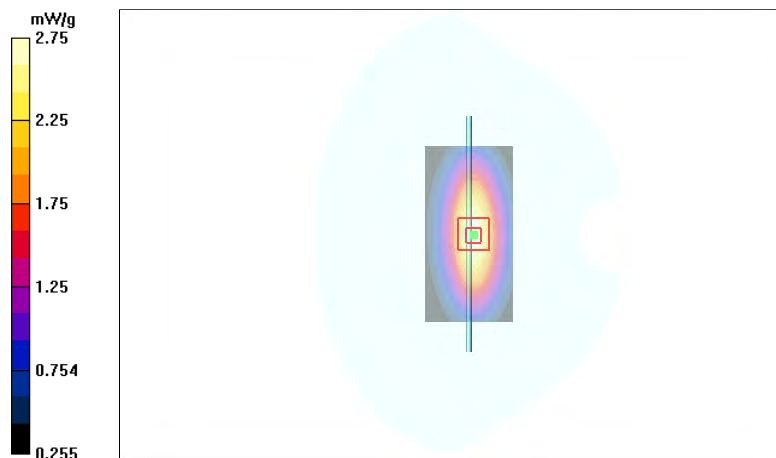
Peak SAR (extrapolated) = 3.76 W/kg

SAR(1 g) = 2.55 mW/g

SAR(10 g) = 1.67 mW/g

Power Drift = -0.044 dB

Maximum value of SAR (measured) = 2.75 mW/g



Date/Time: 2011-09-09 09:39:06

Test Laboratory: TCC Nokia
Type: D835V2; Serial: 4d042

Communication System: CW835

Frequency: 835 MHz; Duty Cycle: 1:1

Medium: Head 850; Medium Notes: Medium Temperature: 22.5 C

Medium parameters used: $f = 835$ MHz; $\sigma = 0.905$ mho/m; $\epsilon_r = 41.1$; $\rho = 1000$ kg/m³

Phantom section: Flat Section

DASY4 Configuration:

- Probe: ES3DV3 - SN3116; Probe Notes:
- ConvF(6.01, 6.01, 6.01); Calibrated: 2011-02-17
- Sensor-Surface: 4mm (Mechanical Surface Detection)
- Electronics: DAE4 Sn339; Calibrated: 2011-02-18
- Phantom: SAM 3; Type: Twin Phantom; Serial: TP-1302
- Measurement SW: DASY4, V4.7 Build 71; Postprocessing SW: SEMCAD, V1.8 Build 184

d=15mm, Pin=250mW/Area Scan (61x121x1): Measurement grid: dx=10mm, dy=10mm

Maximum value of SAR (interpolated) = 2.69 mW/g

d=15mm, Pin=250mW/Zoom Scan (7x7x7) (7x7x7)/Cube 0: Measurement grid: dx=5mm, dy=5mm, dz=5mm

Reference Value = 55.2 V/m

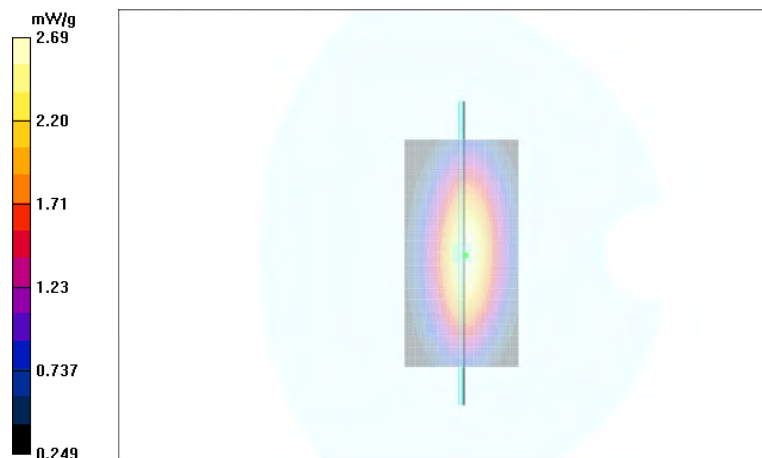
Peak SAR (extrapolated) = 3.70 W/kg

SAR(1 g) = 2.48 mW/g

SAR(10 g) = 1.62 mW/g

Power Drift = -0.060 dB

Maximum value of SAR (measured) = 2.69 mW/g



APPENDIX B: MEASUREMENT SCANS

See the following pages

Date/Time: 2011-08-09 10:13:21

Test Laboratory: TCC Nokia

Type: RM-632; Serial: 355949/04/724052/7

Communication System: 3-slot GPRS850

Frequency: 848.8 MHz; Duty Cycle: 1:2.8

Medium: Head 850; Medium Notes: Medium Temperature: 21.6 C

Medium parameters used: $f = 849$ MHz; $\sigma = 0.917$ mho/m; $\epsilon_r = 40.3$; $\rho = 1000$ kg/m³

Phantom section: Left Section

DASY4 Configuration:

- Probe: ES3DV3 - SN3116; Probe Notes:
- ConvF(6.01, 6.01, 6.01); Calibrated: 2011-02-17
- Sensor-Surface: 4mm (Mechanical Surface Detection (Locations From Previous Scan Used))Sensor-Surface: 4mm (Mechanical Surface Detection)
- Electronics: DAE4 Sn710; Calibrated: 2010-09-17
- Phantom: SAM 3; Type: Twin Phantom; Serial: TP-1302
- Measurement SW: DASY4, V4.7 Build 71; Postprocessing SW: SEMCAD, V1.8 Build 184

Cheek - High/Area Scan (61x91x1): Measurement grid: dx=15mm, dy=15mm

Maximum value of SAR (interpolated) = 1.08 mW/g

Cheek - High/Zoom Scan (5x5x7)/Cube 0: Measurement grid: dx=7.5mm, dy=7.5mm, dz=5mm

Reference Value = 14.0 V/m

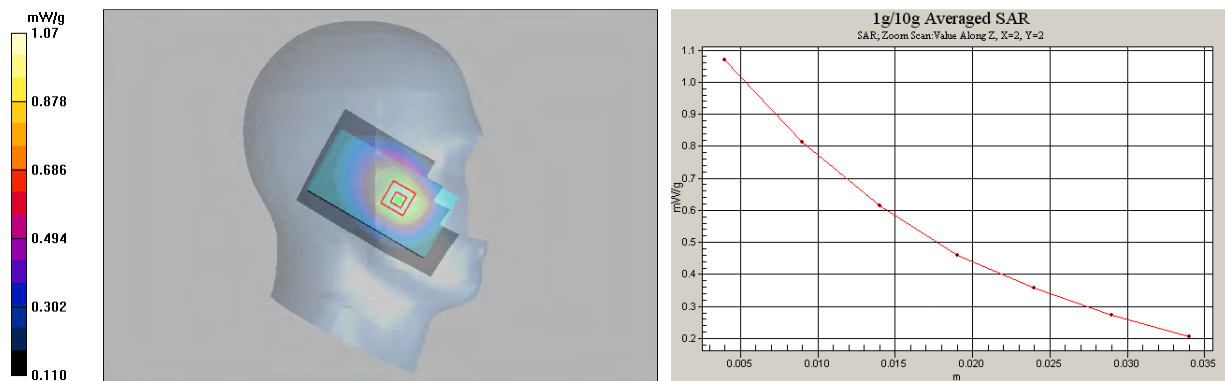
Peak SAR (extrapolated) = 1.33 W/kg

SAR(1 g) = 1 mW/g

SAR(10 g) = 0.718 mW/g

Power Drift = -0.015 dB

Maximum value of SAR (measured) = 1.07 mW/g



SAR Report

FCC_RM-634_07

Applicant: Nokia Corporation

Type: RM-634

Copyright © 2011 TCC Nokia

Date/Time: 2011-08-17 12:17:54

Test Laboratory: TCC Nokia

Type: RM-632; Serial: 355949/04/724052/7

Communication System: 3-slot GPRS850

Frequency: 824.2 MHz; Duty Cycle: 1:2.8

Medium: Head 850; Medium Notes: Medium Temperature: 21.5 C

Medium parameters used (interpolated): $f = 824.2$ MHz; $\sigma = 0.887$ mho/m; $\epsilon_r = 40.8$; $\rho = 1000$ kg/m³

Phantom section: Right Section

DASY4 Configuration:

- Probe: ES3DV3 - SN3116; Probe Notes:
- ConvF(6.01, 6.01, 6.01); Calibrated: 2011-02-17
- Sensor-Surface: 4mm (Mechanical Surface Detection (Locations From Previous Scan Used))Sensor-Surface: 4mm (Mechanical Surface Detection)
- Electronics: DAE4 Sn710; Calibrated: 2010-09-17
- Phantom: SAM 3; Type: Twin Phantom; Serial: TP-1302
- Measurement SW: DASY4, V4.7 Build 71; Postprocessing SW: SEMCAD, V1.8 Build 184

Cheek - Low/Area Scan (61x91x1): Measurement grid: dx=15mm, dy=15mm

Maximum value of SAR (interpolated) = 0.902 mW/g

Cheek - Low/Zoom Scan (5x5x7)/Cube 0: Measurement grid: dx=7.5mm, dy=7.5mm, dz=5mm

Reference Value = 11.5 V/m

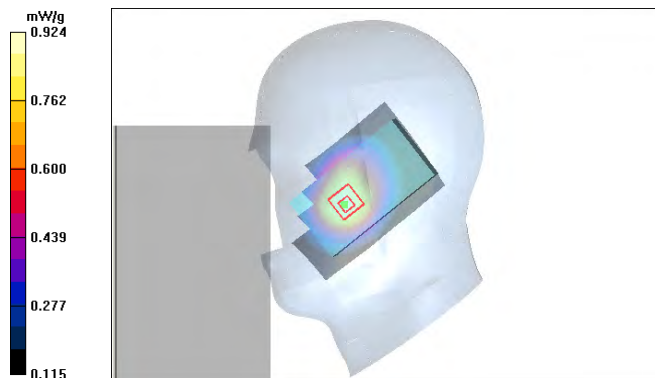
Peak SAR (extrapolated) = 1.15 W/kg

SAR(1 g) = 0.879 mW/g

SAR(10 g) = 0.641 mW/g

Power Drift = -0.066 dB

Maximum value of SAR (measured) = 0.924 mW/g



Date/Time: 2011-08-09 12:06:32

Test Laboratory: TCC Nokia

Type: RM-634; Serial: 353399/04/000504/2

Communication System: WCDMA850

Frequency: 826.4 MHz; Duty Cycle: 1:1

Medium: Head 850; Medium Notes: Medium Temperature: 21.6 C

Medium parameters used (interpolated): $f = 826.4$ MHz; $\sigma = 0.895$ mho/m; $\epsilon_r = 40.6$; $\rho = 1000$ kg/m³

Phantom section: Left Section

DASY4 Configuration:

- Probe: ES3DV3 - SN3116; Probe Notes:
- ConvF(6.01, 6.01, 6.01); Calibrated: 2011-02-17
- Sensor-Surface: 4mm (Mechanical Surface Detection (Locations From Previous Scan Used))Sensor-Surface: 4mm (Mechanical Surface Detection)
- Electronics: DAE4 Sn710; Calibrated: 2010-09-17
- Phantom: SAM 3; Type: Twin Phantom; Serial: TP-1302
- Measurement SW: DASY4, V4.7 Build 71; Postprocessing SW: SEMCAD, V1.8 Build 184

Cheek - Low/Area Scan (61x91x1): Measurement grid: dx=15mm, dy=15mm

Maximum value of SAR (interpolated) = 0.826 mW/g

Cheek - Low/Zoom Scan (5x5x7)/Cube 0: Measurement grid: dx=7.5mm, dy=7.5mm, dz=5mm

Reference Value = 14.1 V/m

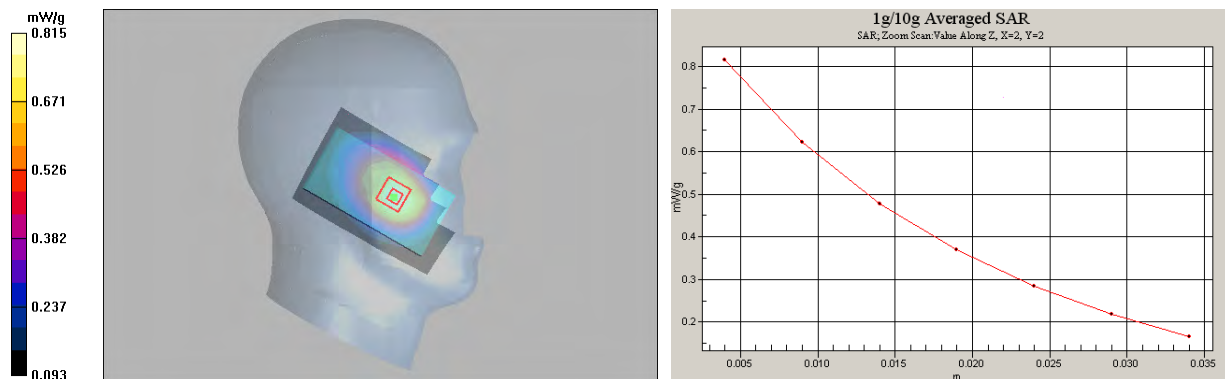
Peak SAR (extrapolated) = 0.997 W/kg

SAR(1 g) = 0.763 mW/g

SAR(10 g) = 0.555 mW/g

Power Drift = -0.105 dB

Maximum value of SAR (measured) = 0.815 mW/g



Date/Time: 2011-08-10 12:39:20

Test Laboratory: TCC Nokia

Type: RM-632; Serial: 355949/04/724052/7

Communication System: 2-slot GPRS1900

Frequency: 1909.8 MHz; Duty Cycle: 1:4.2

Medium: Head 1900; Medium Notes: Medium Temperature: 21.2 C

Medium parameters used: $f = 1910$ MHz; $\sigma = 1.42$ mho/m; $\epsilon_r = 39.7$; $\rho = 1000$ kg/m³

Phantom section: Left Section

DASY4 Configuration:

- Probe: ES3DV3 - SN3116; Probe Notes:
- ConvF(5.08, 5.08, 5.08); Calibrated: 2011-02-17
- Sensor-Surface: 4mm (Mechanical Surface Detection (Locations From Previous Scan Used))Sensor-Surface: 4mm (Mechanical Surface Detection)
- Electronics: DAE4 Sn710; Calibrated: 2010-09-17
- Phantom: SAM 6; Type: SAM Twin Phantom; Serial: TP-1301
- Measurement SW: DASY4, V4.7 Build 71; Postprocessing SW: SEMCAD, V1.8 Build 184

Cheek - High/Area Scan (61x91x1): Measurement grid: dx=15mm, dy=15mm

Maximum value of SAR (interpolated) = 0.507 mW/g

Cheek - High/Zoom Scan (5x5x7)/Cube 0: Measurement grid: dx=7.5mm, dy=7.5mm, dz=5mm

Reference Value = 4.62 V/m

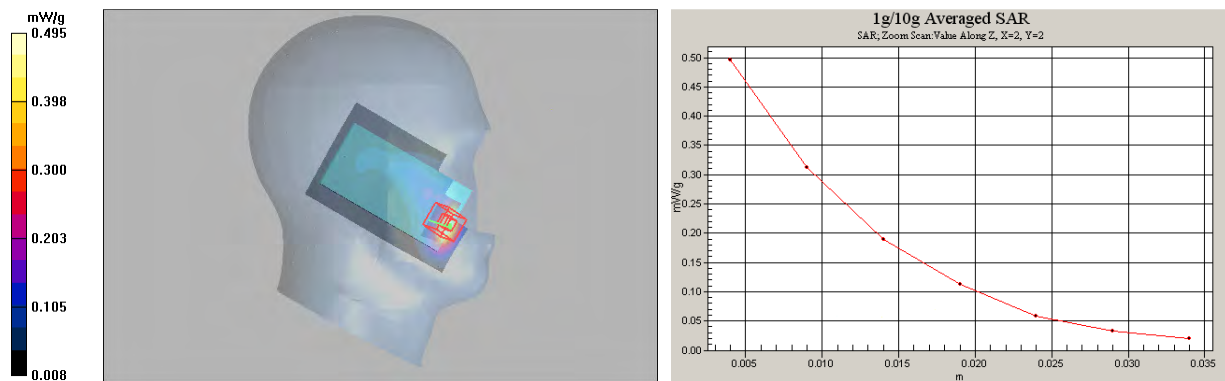
Peak SAR (extrapolated) = 0.916 W/kg

SAR(1 g) = 0.478 mW/g

SAR(10 g) = 0.249 mW/g

Power Drift = 0.101 dB

Maximum value of SAR (measured) = 0.495 mW/g



SAR Report

FCC_RM-634_07

Applicant: Nokia Corporation

Type: RM-634

Copyright © 2011 TCC Nokia

Date/Time: 2011-08-10 11:42:55

Test Laboratory: TCC Nokia

Type: RM-632; Serial: 355949/04/724052/7

Communication System: WCDMA1900

Frequency: 1907.6 MHz; Duty Cycle: 1:1

Medium: Head 1900; Medium Notes: Medium Temperature: 21.2 C

Medium parameters used: $f = 1908$ MHz; $\sigma = 1.42$ mho/m; $\epsilon_r = 39.7$; $\rho = 1000$ kg/m³

Phantom section: Right Section

DASY4 Configuration:

- Probe: ES3DV3 - SN3116; Probe Notes:
- ConvF(5.08, 5.08, 5.08); Calibrated: 2011-02-17
- Sensor-Surface: 4mm (Mechanical Surface Detection (Locations From Previous Scan Used))Sensor-Surface: 4mm (Mechanical Surface Detection)
- Electronics: DAE4 Sn710; Calibrated: 2010-09-17
- Phantom: SAM 6; Type: SAM Twin Phantom; Serial: TP-1301
- Measurement SW: DASY4, V4.7 Build 71; Postprocessing SW: SEMCAD, V1.8 Build 184

Cheek - High/Area Scan (61x91x1): Measurement grid: dx=15mm, dy=15mm

Maximum value of SAR (interpolated) = 1.00 mW/g

Cheek - High/Zoom Scan (5x5x7)/Cube 0: Measurement grid: dx=7.5mm, dy=7.5mm, dz=5mm

Reference Value = 8.20 V/m

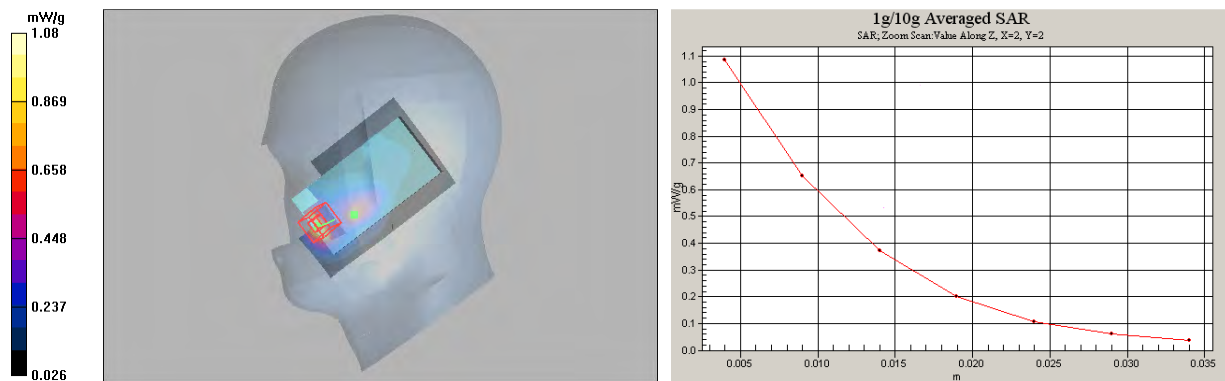
Peak SAR (extrapolated) = 1.75 W/kg

SAR(1 g) = 0.978 mW/g

SAR(10 g) = 0.510 mW/g

Power Drift = 0.042 dB

Maximum value of SAR (measured) = 1.08 mW/g



SAR Report

FCC_RM-634_07

Applicant: Nokia Corporation

Type: RM-634

Copyright © 2011 TCC Nokia

Date/Time: 2011-08-09 14:01:11

Test Laboratory: TCC Nokia

Type: RM-632; Serial: 355949/04/724052/7

Communication System: 3-slot GPRS850

Frequency: 836.6 MHz; Duty Cycle: 1:2.8

Medium: Body 850; Medium Notes: Medium Temperature: 21.6 C

Medium parameters used: $f = 837$ MHz; $\sigma = 0.979$ mho/m; $\epsilon_r = 52.9$; $\rho = 1000$ kg/m³

Phantom section: Flat Section

DASY4 Configuration:

- Probe: ES3DV3 - SN3116; Probe Notes:
- ConvF(5.96, 5.96, 5.96); Calibrated: 2011-02-17
- Sensor-Surface: 4mm (Mechanical Surface Detection (Locations From Previous Scan Used))Sensor-Surface: 4mm (Mechanical Surface Detection)
- Electronics: DAE4 Sn710; Calibrated: 2010-09-17
- Phantom: SAM 2; Type: Twin Phantom; Serial: TP-1037
- Measurement SW: DASY4, V4.7 Build 71; Postprocessing SW: SEMCAD, V1.8 Build 184

Body - Middle - No Accessory - Display Facing Phantom/Area Scan (71x101x1): Measurement grid: dx=15mm, dy=15mm

Maximum value of SAR (interpolated) = 0.761 mW/g

Body - Middle - No Accessory - Display Facing Phantom/Zoom Scan (5x5x7)/Cube 0: Measurement grid:

dx=7.5mm, dy=7.5mm, dz=5mm

Reference Value = 13.6 V/m

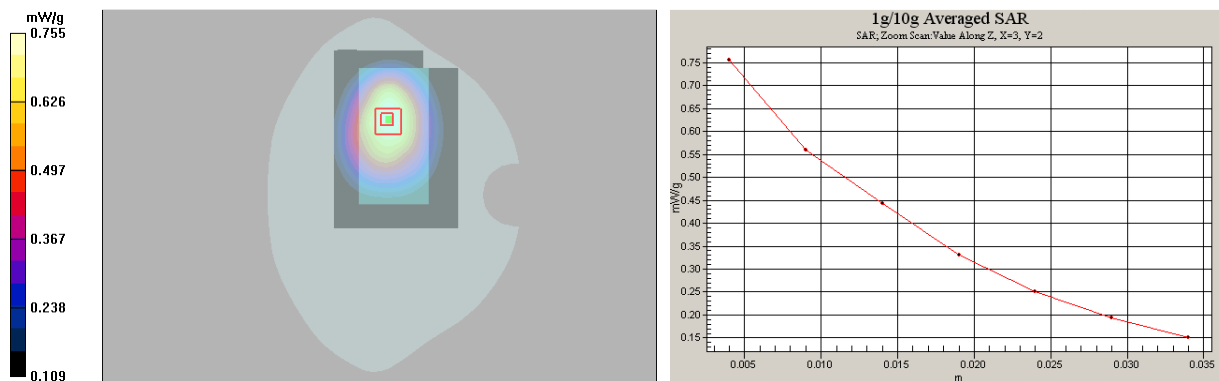
Peak SAR (extrapolated) = 0.944 W/kg

SAR(1 g) = 0.722 mW/g

SAR(10 g) = 0.537 mW/g

Power Drift = 0.134 dB

Maximum value of SAR (measured) = 0.755 mW/g



SAR Report

FCC_RM-634_07

Applicant: Nokia Corporation

Type: RM-634

Copyright © 2011 TCC Nokia

Date/Time: 2011-09-09 11:52:24

Test Laboratory: TCC Nokia

Type: RM-634; Serial: 353399/04/000504/2

Communication System: WCDMA850

Frequency: 826.4 MHz; Duty Cycle: 1:1

Medium: Body 850; Medium Notes: Medium Temperature: 22.5 C

Medium parameters used (interpolated): $f = 826.4$ MHz; $\sigma = 0.977$ mho/m; $\epsilon_r = 54.1$; $\rho = 1000$ kg/m³

Phantom section: Flat Section

DASY4 Configuration:

- Probe: ES3DV3 - SN3116; Probe Notes:
- ConvF(5.96, 5.96, 5.96); Calibrated: 2011-02-17
- Sensor-Surface: 4mm (Mechanical Surface Detection (Locations From Previous Scan Used))Sensor-Surface: 4mm (Mechanical Surface Detection)
- Electronics: DAE4 Sn339; Calibrated: 2011-02-18
- Phantom: SAM 2; Type: Twin Phantom; Serial: TP-1037
- Measurement SW: DASY4, V4.7 Build 71; Postprocessing SW: SEMCAD, V1.8 Build 184

Body - Low - No Accessory - Display Facing Phantom/Area Scan (71x101x1): Measurement grid: dx=15mm, dy=15mm

Maximum value of SAR (interpolated) = 0.657 mW/g

Body - Low - No Accessory - Display Facing Phantom/Zoom Scan (5x5x7)/Cube 0: Measurement grid:

dx=7.5mm, dy=7.5mm, dz=5mm

Reference Value = 11.9 V/m

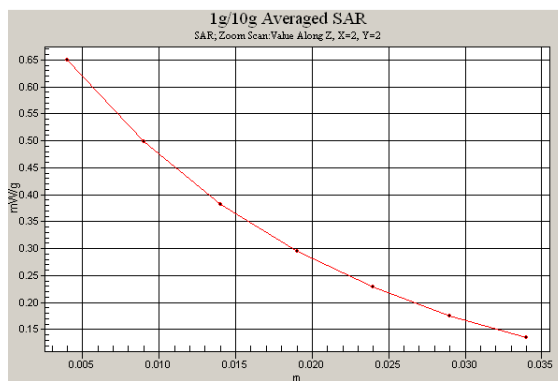
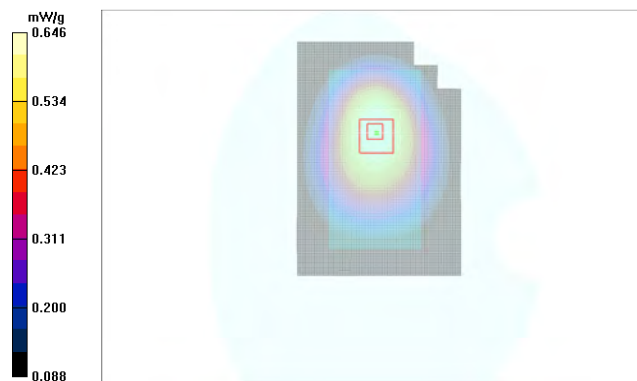
Peak SAR (extrapolated) = 0.796 W/kg

SAR(1 g) = 0.614 mW/g

SAR(10 g) = 0.455 mW/g

Power Drift = 0.035 dB

Maximum value of SAR (measured) = 0.646 mW/g



SAR Report

FCC_RM-634_07

Applicant: Nokia Corporation

Type: RM-634

Copyright © 2011 TCC Nokia

Date/Time: 2011-08-10 16:50:26

Test Laboratory: TCC Nokia

Type: RM-632; Serial: 355949/04/724052/7

Communication System: 2-slot GPRS1900

Frequency: 1850.2 MHz; Duty Cycle: 1:4.2

Medium: Body 1900; Medium Notes: Medium Temperature: 21.3 C

Medium parameters used (interpolated): $f = 1850.2$ MHz; $\sigma = 1.48$ mho/m; $\epsilon_r = 51$; $\rho = 1000$ kg/m³

Phantom section: Flat Section

DASY4 Configuration:

- Probe: ES3DV3 - SN3116; Probe Notes:
- ConvF(4.68, 4.68, 4.68); Calibrated: 2011-02-17
- Sensor-Surface: 4mm (Mechanical Surface Detection)
- Electronics: DAE4 Sn710; Calibrated: 2010-09-17
- Phantom: SAM 1; Type: Twin Phantom; Serial: TP-1215
- Measurement SW: DASY4, V4.7 Build 71; Postprocessing SW: SEMCAD, V1.8 Build 184

Body - Low - No Accessory - Back Facing Phantom/Area Scan (71x111x1): Measurement grid: dx=15mm, dy=15mm

Maximum value of SAR (interpolated) = 0.610 mW/g

Body - Low - No Accessory - Back Facing Phantom/Zoom Scan (5x5x7)/Cube 0: Measurement grid: dx=7.5mm, dy=7.5mm, dz=5mm

Reference Value = 5.16 V/m

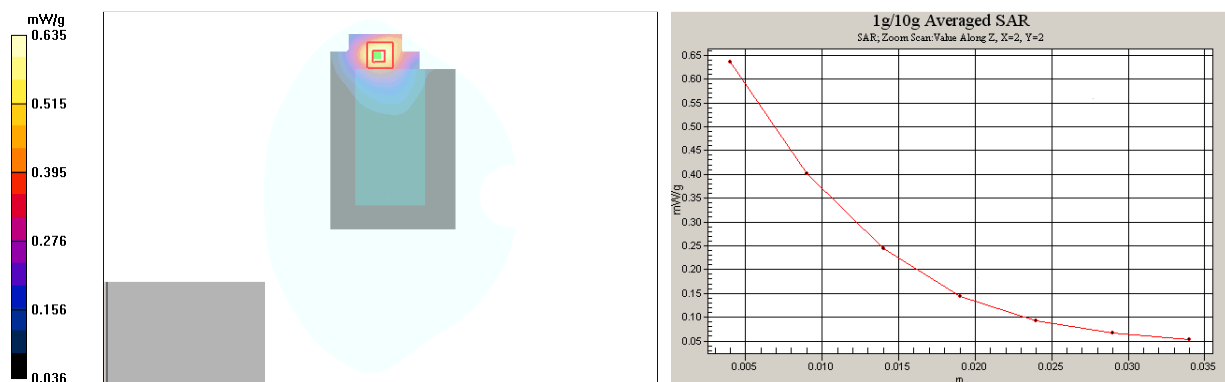
Peak SAR (extrapolated) = 0.968 W/kg

SAR(1 g) = 0.576 mW/g

SAR(10 g) = 0.339 mW/g

Power Drift = -0.020 dB

Maximum value of SAR (measured) = 0.635 mW/g



SAR Report

FCC_RM-634_07

Applicant: Nokia Corporation

Type: RM-634

Copyright © 2011 TCC Nokia

Date/Time: 2011-08-10 17:45:56

Test Laboratory: TCC Nokia

Type: RM-632; Serial: 355949/04/724052/7

Communication System: WCDMA1900

Frequency: 1852.4 MHz; Duty Cycle: 1:1

Medium: Body 1900; Medium Notes: Medium Temperature: 21.3 C

Medium parameters used (interpolated): $f = 1852.4$ MHz; $\sigma = 1.48$ mho/m; $\epsilon_r = 51$; $\rho = 1000$ kg/m³

Phantom section: Flat Section

DASY4 Configuration:

- Probe: ES3DV3 - SN3116; Probe Notes:
- ConvF(4.68, 4.68, 4.68); Calibrated: 2011-02-17
- Sensor-Surface: 4mm (Mechanical Surface Detection)
- Electronics: DAE4 Sn710; Calibrated: 2010-09-17
- Phantom: SAM 1; Type: Twin Phantom; Serial: TP-1215
- Measurement SW: DASY4, V4.7 Build 71; Postprocessing SW: SEMCAD, V1.8 Build 184

Body - Low - No Accessory - Display Facing Phantom/Area Scan (71x111x1): Measurement grid: dx=15mm, dy=15mm

Maximum value of SAR (interpolated) = 1.29 mW/g

Body - Low - No Accessory - Display Facing Phantom/Zoom Scan (5x5x7)/Cube 0: Measurement grid:

dx=7.5mm, dy=7.5mm, dz=5mm

Reference Value = 8.14 V/m

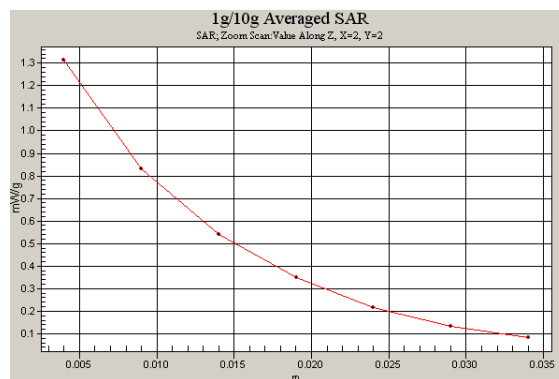
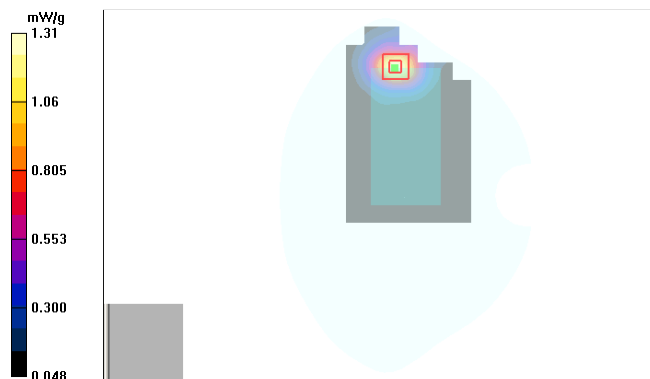
Peak SAR (extrapolated) = 1.96 W/kg

SAR(1 g) = 1.2 mW/g

SAR(10 g) = 0.689 mW/g

Power Drift = 0.239 dB

Maximum value of SAR (measured) = 1.31 mW/g



SAR Report

FCC_RM-634_07

Applicant: Nokia Corporation

Type: RM-634

Copyright © 2011 TCC Nokia

Date/Time: 2011-08-17 10:52:44

Test Laboratory: TCC Nokia

Type: RM-632; Serial: 355949/04/724052/7

Communication System: WCDMA1900

Frequency: 1907.6 MHz; Duty Cycle: 1:1

Medium: Head 1900; Medium Notes: Medium Temperature: 21.2 C

Medium parameters used: $f = 1908$ MHz; $\sigma = 1.48$ mho/m; $\epsilon_r = 38.2$; $\rho = 1000$ kg/m³

Phantom section: Flat Section

DASY4 Configuration:

- Probe: ES3DV3 - SN3116; Probe Notes:
- ConvF(5.08, 5.08, 5.08); Calibrated: 2011-02-17
- Sensor-Surface: 4mm (Mechanical Surface Detection (Locations From Previous Scan Used))Sensor-Surface: 4mm (Mechanical Surface Detection)
- Electronics: DAE4 Sn710; Calibrated: 2010-09-17
- Phantom: SAM 5; Type: Twin Phantom; Serial: TP-1302
- Measurement SW: DASY4, V4.7 Build 71; Postprocessing SW: SEMCAD, V1.8 Build 184

Body - High - WH-102 - Display Facing Phantom/Area Scan (71x101x1): Measurement grid: dx=15mm, dy=15mm

Maximum value of SAR (interpolated) = 1.06 mW/g

Body - High - WH-102 - Display Facing Phantom/Zoom Scan (5x5x7)/Cube 0: Measurement grid: dx=7.5mm, dy=7.5mm, dz=5mm

Reference Value = 4.38 V/m

Peak SAR (extrapolated) = 1.79 W/kg

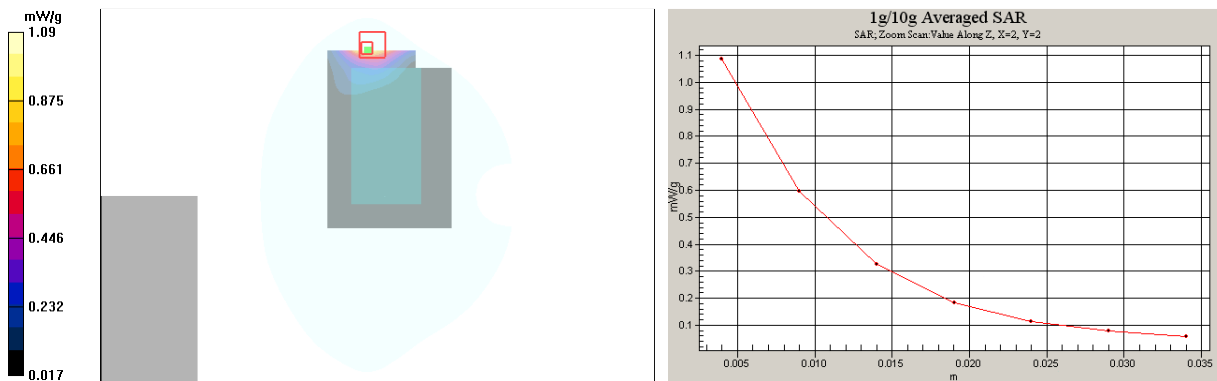
SAR(1 g) = 0.967 mW/g

SAR(10 g) = 0.573 mW/g

Power Drift = 0.360 dB

Warning: Maximum averaged SAR over 10 g is located on the boundary of the measurement cube. This cube might not incorporate the absolute averaged SAR. Please consider a refinement of the Area Scan measurement.

Maximum value of SAR (measured) = 1.09 mW/g



SAR Report

FCC_RM-634_07

Applicant: Nokia Corporation

Type: RM-634

Copyright © 2011 TCC Nokia

Date/Time: 2011-08-17 13:40:59

Test Laboratory: TCC Nokia

Type: RM-632; Serial: 355949/04/724052/7

Communication System: WCDMA1900

Frequency: 1852.4 MHz; Duty Cycle: 1:1

Medium: Head 1900; Medium Notes: Medium Temperature: 21.2 C

Medium parameters used (interpolated): $f = 1852.4$ MHz; $\sigma = 1.43$ mho/m; $\epsilon_r = 38.4$; $\rho = 1000$ kg/m³

Phantom section: Flat Section

DASY4 Configuration:

- Probe: ES3DV3 - SN3116; Probe Notes:
- ConvF(5.08, 5.08, 5.08); Calibrated: 2011-02-17
- Sensor-Surface: 4mm (Mechanical Surface Detection)
- Electronics: DAE4 Sn710; Calibrated: 2010-09-17
- Phantom: SAM 5; Type: Twin Phantom; Serial: TP-1302
- Measurement SW: DASY4, V4.7 Build 71; Postprocessing SW: SEMCAD, V1.8 Build 184

Body - Low - No Accessory - Back Facing Phantom/Area Scan (71x101x1): Measurement grid: dx=15mm, dy=15mm

Maximum value of SAR (interpolated) = 0.886 mW/g

Body - Low - No Accessory - Back Facing Phantom/Zoom Scan (5x5x7)/Cube 0: Measurement grid: dx=7.5mm, dy=7.5mm, dz=5mm

Reference Value = 3.21 V/m

Peak SAR (extrapolated) = 1.42 W/kg

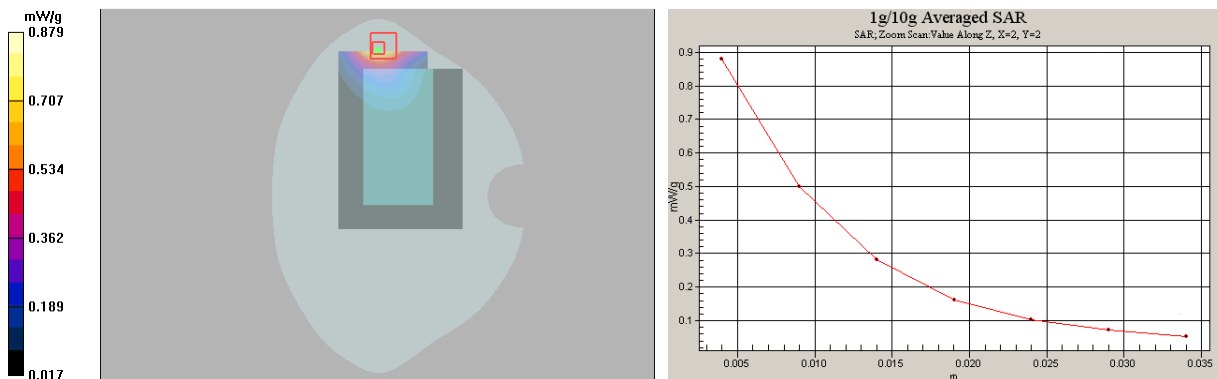
SAR(1 g) = 0.796 mW/g

SAR(10 g) = 0.487 mW/g

Power Drift = 0.109 dB

Warning: Maximum averaged SAR over 10 g is located on the boundary of the measurement cube. This cube might not incorporate the absolute averaged SAR. Please consider a refinement of the Area Scan measurement.

Maximum value of SAR (measured) = 0.879 mW/g



SAR Report

FCC_RM-634_07

Applicant: Nokia Corporation

Type: RM-634

Copyright © 2011 TCC Nokia

Date/Time: 2011-08-17 13:25:26

Test Laboratory: TCC Nokia

Type: RM-632; Serial: 355949/04/724052/7

Communication System: WCDMA1900

Frequency: 1852.4 MHz; Duty Cycle: 1:1

Medium: Head 1900; Medium Notes: Medium Temperature: 21.2 C

Medium parameters used (interpolated): $f = 1852.4$ MHz; $\sigma = 1.43$ mho/m; $\epsilon_r = 38.4$; $\rho = 1000$ kg/m³

Phantom section: Flat Section

DASY4 Configuration:

- Probe: ES3DV3 - SN3116; Probe Notes:
- ConvF(5.08, 5.08, 5.08); Calibrated: 2011-02-17
- Sensor-Surface: 4mm (Mechanical Surface Detection)
- Electronics: DAE4 Sn710; Calibrated: 2010-09-17
- Phantom: SAM 5; Type: Twin Phantom; Serial: TP-1302
- Measurement SW: DASY4, V4.7 Build 71; Postprocessing SW: SEMCAD, V1.8 Build 184

Body - Low - Headset WH-102 - Back Facing Phantom/Area Scan (71x101x1): Measurement grid: dx=15mm, dy=15mm

Maximum value of SAR (interpolated) = 0.868 mW/g

Body - Low - Headset WH-102 - Back Facing Phantom/Zoom Scan (5x5x7)/Cube 0: Measurement grid:

dx=7.5mm, dy=7.5mm, dz=5mm

Reference Value = 3.16 V/m

Peak SAR (extrapolated) = 1.41 W/kg

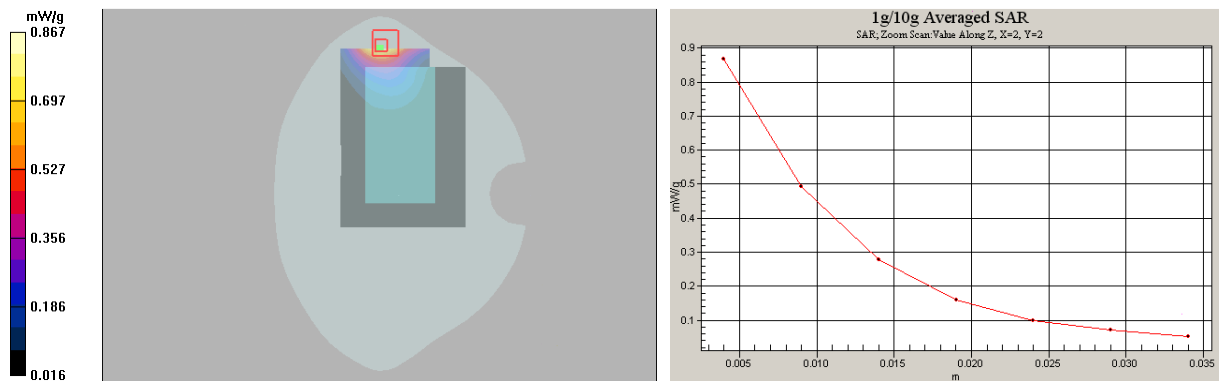
SAR(1 g) = 0.787 mW/g

SAR(10 g) = 0.482 mW/g

Power Drift = 0.113 dB

Warning: Maximum averaged SAR over 10 g is located on the boundary of the measurement cube. This cube might not incorporate the absolute averaged SAR. Please consider a refinement of the Area Scan measurement.

Maximum value of SAR (measured) = 0.867 mW/g



SAR Report

FCC_RM-634_07

Applicant: Nokia Corporation

Type: RM-634

Copyright © 2011 TCC Nokia

Date/Time: 2011-08-09 10:13:21, Date/Time: 2011-07-08 19:01:24

Test Laboratory: TCC Nokia

Type: RM-632; Serial: 355949/04/724052/7, Serial: 357413/04/185815/5

Communication System: 3-slot GPRS850, Communication System: WLAN2450 b-mode

Frequency: 848.8 MHz; Frequency: 2442 MHz; Duty Cycle: 1:2.8, Duty Cycle: 1:1

Medium: Head 850, Medium: Head 2450; Medium Notes: Medium Temperature: 21.6 C, Medium Notes: Medium Temperature: 20.1 C

Medium parameters used: $f = 849 \text{ MHz}$; $\sigma = 0.917 \text{ mho/m}$; $\epsilon_r = 40.3$; $\rho = 1000 \text{ kg/m}^3$, Medium parameters used: $f = 2442 \text{ MHz}$; $\sigma = 1.84 \text{ mho/m}$; $\epsilon_r = 38.7$; $\rho = 1000 \text{ kg/m}^3$

Phantom section: Left Section

DASY4 Configuration:

- Probe: ES3DV3 - SN3116, Probe: ES3DV3 - SN3118; Probe Notes:
- ConvF(6.01, 6.01, 6.01), ConvF(4.19, 4.19, 4.19); Calibrated: 2011-02-17, Calibrated: 2010-09-09
- Sensor-Surface: 4mm (Mechanical Surface Detection (Locations From Previous Scan Used)), Sensor-Surface: 4mm (Mechanical Surface Detection)
- Electronics: DAE4 Sn710, Electronics: DAE4 Sn501; Calibrated: 2010-09-17, Calibrated: 2011-02-18
- Phantom: SAM 3, Phantom: SAM 9; Type: Twin Phantom; Serial: TP-1302, Serial: TP-1408
- ; SEMCAD X Version 14.0 Build 61

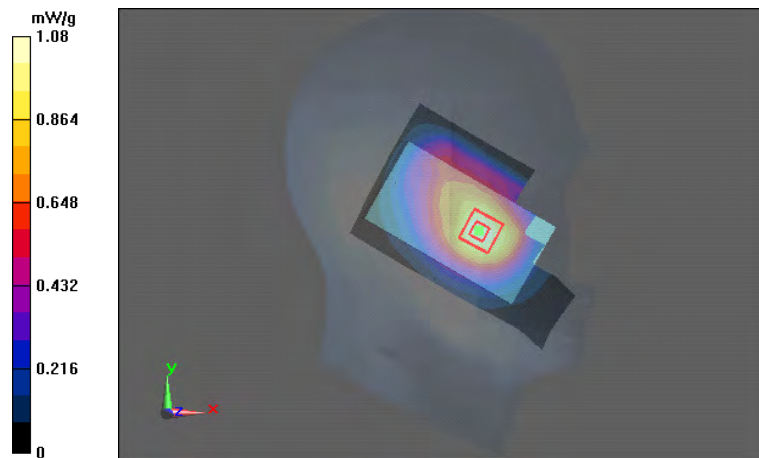
Configuration/Cheek - High/Area Scan (7x10x1): Measurement grid: dx=15mm, dy=15mm

Configuration/Cheek - Middle/Area Scan (8x11x1): Measurement grid: dx=15mm, dy=15mm

Motorola Fast SAR of Combined Scans: SAR(1 g) = 1.01 mW/g

SAR(10 g) = 0.698 mW/g

Maximum value of SAR (measured) = 1.08 mW/g



Date/Time: 2011-08-09 12:06:32, Date/Time: 2011-07-08 19:01:24

Test Laboratory: TCC Nokia

Type: RM-634, Type: RM-632; Serial: 353399/04/000504/2, Serial: 357413/04/185815/5

Communication System: WCDMA850, Communication System: WLAN2450 b-mode

Frequency: 826.4 MHz, Frequency: 2442 MHz; Duty Cycle: 1:1

Medium: Head 850, Medium: Head 2450; Medium Notes: Medium Temperature: 21.6 C, Medium Notes: Medium Temperature: 20.1 C

Medium parameters used (interpolated): $f = 826.4$ MHz; $\sigma = 0.895$ mho/m; $\epsilon_r = 40.6$; $\rho = 1000$ kg/m³, Medium parameters used: $f = 2442$ MHz; $\sigma = 1.84$ mho/m; $\epsilon_r = 38.7$; $\rho = 1000$ kg/m³

Phantom section: Left Section

DASY4 Configuration:

- Probe: ES3DV3 - SN3116, Probe: ES3DV3 - SN3118; Probe Notes:
- ConvF(6.01, 6.01, 6.01), ConvF(4.19, 4.19, 4.19); Calibrated: 2011-02-17, Calibrated: 2010-09-09
- Sensor-Surface: 4mm (Mechanical Surface Detection (Locations From Previous Scan Used)), Sensor-Surface: 4mm (Mechanical Surface Detection)
- Electronics: DAE4 Sn710, Electronics: DAE4 Sn501; Calibrated: 2010-09-17, Calibrated: 2011-02-18
- Phantom: SAM 3, Phantom: SAM 9; Type: Twin Phantom; Serial: TP-1302, Serial: TP-1408
- ; SEMCAD X Version 14.0 Build 61

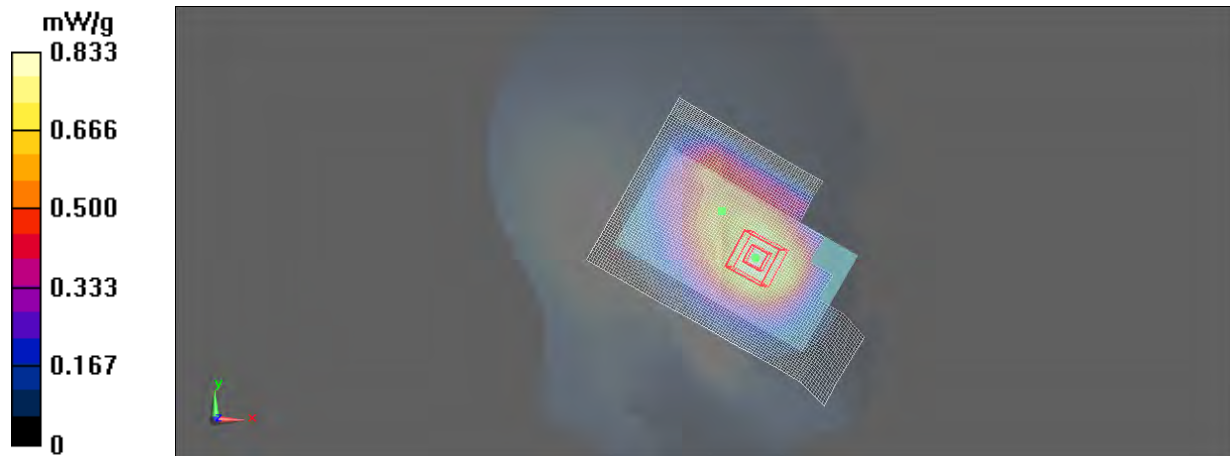
Configuration/Cheek - Low/Area Scan (7x10x1): Measurement grid: dx=15mm, dy=15mm

Configuration/Cheek - Middle/Area Scan (8x11x1): Measurement grid: dx=15mm, dy=15mm

Motorola Fast SAR of Combined Scans: SAR(1 g) = 0.779 mW/g

SAR(10 g) = 0.543 mW/g

Maximum value of SAR (measured) = 0.833 mW/g



Date/Time: 2011-08-10 12:39:20, Date/Time: 2011-07-08 19:01:24

Test Laboratory: TCC Nokia

Type: RM-632; Serial: 355949/04/724052/7, Serial: 357413/04/185815/5

Communication System: 2-slot GPRS1900, Communication System: WLAN2450 b-mode

Frequency: 1909.8 MHz, Frequency: 2442 MHz; Duty Cycle: 1:4.2, Duty Cycle: 1:1

Medium: Head 1900, Medium: Head 2450; Medium Notes: Medium Temperature: 21.2 C, Medium Notes: Medium Temperature: 20.1 C

Medium parameters used: $f = 1910 \text{ MHz}$; $\sigma = 1.42 \text{ mho/m}$; $\epsilon_r = 39.7$; $\rho = 1000 \text{ kg/m}^3$, Medium parameters used: $f = 2442 \text{ MHz}$; $\sigma = 1.84 \text{ mho/m}$; $\epsilon_r = 38.7$; $\rho = 1000 \text{ kg/m}^3$

Phantom section: Left Section

DASY4 Configuration:

- Probe: ES3DV3 - SN3116, Probe: ES3DV3 - SN3118; Probe Notes:
- ConvF(5.08, 5.08, 5.08), ConvF(4.19, 4.19, 4.19); Calibrated: 2011-02-17, Calibrated: 2010-09-09
- Sensor-Surface: 4mm (Mechanical Surface Detection (Locations From Previous Scan Used)), Sensor-Surface: 4mm (Mechanical Surface Detection)
- Electronics: DAE4 Sn710, Electronics: DAE4 Sn501; Calibrated: 2010-09-17, Calibrated: 2011-02-18
- Phantom: SAM 6, Phantom: SAM 9; Type: SAM Twin Phantom, Type: Twin Phantom; Serial: TP-1301, Serial: TP-1408
- ; SEMCAD X Version 14.0 Build 61

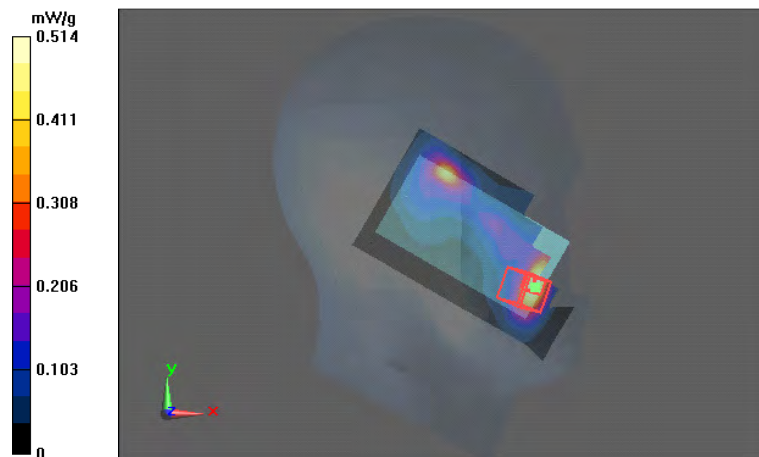
Configuration/Cheek - High/Area Scan (7x10x1): Measurement grid: dx=15mm, dy=15mm

Configuration/Cheek - Middle/Area Scan (8x11x1): Measurement grid: dx=15mm, dy=15mm

Motorola Fast SAR of Combined Scans: SAR(1 g) = 0.451 mW/g

SAR(10 g) = 0.232 mW/g

Maximum value of SAR (measured) = 0.514 mW/g



Date/Time: 2011-08-10 11:42:55, Date/Time: 2011-07-08 19:50:11

Test Laboratory: TCC Nokia

Type: RM-632; Serial: 355949/04/724052/7, Serial: 357413/04/185815/5

Communication System: WCDMA1900, Communication System: WLAN2450 b-mode

Frequency: 1907.6 MHz, Frequency: 2442 MHz; Duty Cycle: 1:1

Medium: Head 1900, Medium: Head 2450; Medium Notes: Medium Temperature: 21.2 C, Medium Notes:

Medium Temperature: 20.1 C

Medium parameters used: $f = 1908 \text{ MHz}$; $\sigma = 1.42 \text{ mho/m}$; $\epsilon_r = 39.7$; $\rho = 1000 \text{ kg/m}^3$, Medium parameters used:

$f = 2442 \text{ MHz}$; $\sigma = 1.84 \text{ mho/m}$; $\epsilon_r = 38.7$; $\rho = 1000 \text{ kg/m}^3$

Phantom section: Right Section

DASY4 Configuration:

- Probe: ES3DV3 - SN3116, Probe: ES3DV3 - SN3118; Probe Notes:

- ConvF(5.08, 5.08, 5.08), ConvF(4.19, 4.19, 4.19); Calibrated: 2010-09-09

- Sensor-Surface: 4mm (Mechanical Surface Detection (Locations From Previous Scan Used)), Sensor-Surface: 4mm (Mechanical Surface Detection)

- Electronics: DAE4 Sn710, Electronics: DAE4 Sn501; Calibrated: 2010-09-17, Calibrated: 2011-02-18

- Phantom: SAM 6, Phantom: SAM 9; Type: SAM Twin Phantom, Type: Twin Phantom; Serial: TP-1301, Serial: TP-1408

-; SEMCAD X Version 14.0 Build 61

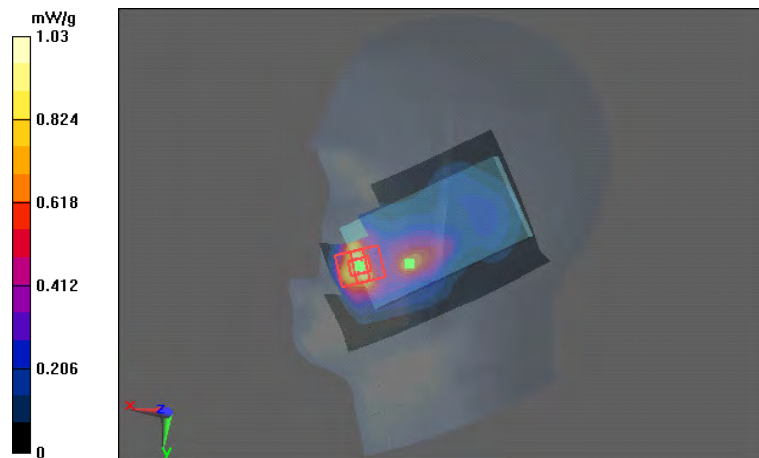
Configuration/Cheek - High/Area Scan (7x10x1): Measurement grid: dx=15mm, dy=15mm

Configuration/Cheek - Middle/Area Scan (8x11x1): Measurement grid: dx=15mm, dy=15mm

Motorola Fast SAR of Combined Scans: SAR(1 g) = 0.895 mW/g

SAR(10 g) = 0.505 mW/g

Maximum value of SAR (measured) = 1.03 mW/g



Date/Time: 2011-08-09 14:01:11, Date/Time: 2011-07-08 21:33:33

Test Laboratory: TCC Nokia

Type: RM-632; Serial: 355949/04/724052/7, Serial: 357413/04/185815/5

Communication System: 3-slot GPRS850, Communication System: WLAN2450 b-mode

Frequency: 836.6 MHz, Frequency: 2442 MHz; Duty Cycle: 1:2.8, Duty Cycle: 1:1

Medium: Body 850, Medium: Body 2450; Medium Notes: Medium Temperature: 21.6 C, Medium Notes: Medium Temperature: 20.1 C

Medium parameters used: $f = 837 \text{ MHz}$; $\sigma = 0.979 \text{ mho/m}$; $\epsilon_r = 52.9$; $\rho = 1000 \text{ kg/m}^3$, Medium parameters used: $f = 2442 \text{ MHz}$; $\sigma = 1.97 \text{ mho/m}$; $\epsilon_r = 50.2$; $\rho = 1000 \text{ kg/m}^3$

Phantom section: Flat Section

DASY4 Configuration:

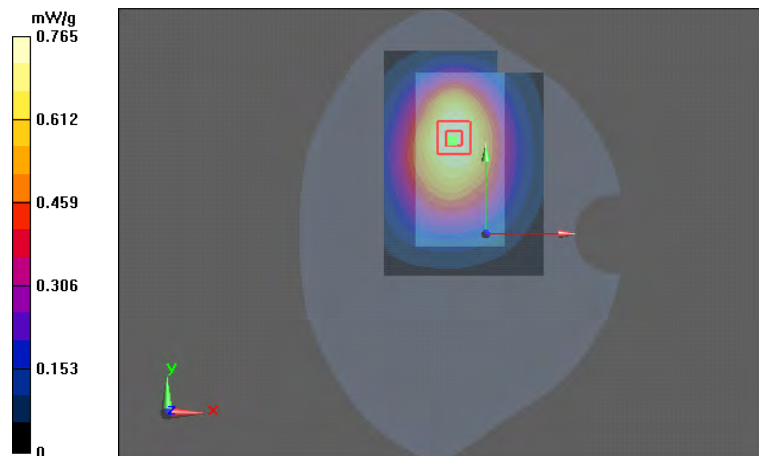
- Probe: ES3DV3 - SN3116, Probe: ES3DV3 - SN3118; Probe Notes:
- ConvF(5.96, 5.96, 5.96), ConvF(4.05, 4.05, 4.05); Calibrated: 2011-02-17, Calibrated: 2010-09-09
- Sensor-Surface: 4mm (Mechanical Surface Detection (Locations From Previous Scan Used))
- Electronics: DAE4 Sn710, Electronics: DAE4 Sn501; Calibrated: 2010-09-17, Calibrated: 2011-02-18
- Phantom: SAM 2, Phantom: SAM 8; Type: Twin Phantom, Type: SAM Twin Phantom; Serial: TP-1037, Serial: TP-1328
- ; SEMCAD X Version 14.0 Build 61

Configuration/Body - Middle - No Accessory - Display Facing Phantom/Area Scan (8x11x1): Measurement grid: $dx=15\text{mm}$, $dy=15\text{mm}$

Motorola Fast SAR of Combined Scans: SAR(1 g) = 0.724 mW/g

SAR(10 g) = 0.514 mW/g

Maximum value of SAR (measured) = 0.765 mW/g



Date/Time: 2011-09-09 11:52:24, Date/Time: 2011-07-08 21:33:33

Test Laboratory: TCC Nokia

Type: RM-634, Type: RM-632; Serial: 353399/04/000504/2, Serial: 357413/04/185815/5

Communication System: WCDMA850, Communication System: WLAN2450 b-mode

Frequency: 826.4 MHz, Frequency: 2442 MHz; Duty Cycle: 1:1

Medium: Body 850, Medium: Body 2450; Medium Notes: Medium Temperature: 22.5 C, Medium Notes: Medium Temperature: 20.1 C

Medium parameters used (interpolated): $f = 826.4$ MHz; $\sigma = 0.977$ mho/m; $\epsilon_r = 54.1$; $\rho = 1000$ kg/m³, Medium parameters used: $f = 2442$ MHz; $\sigma = 1.97$ mho/m; $\epsilon_r = 50.2$; $\rho = 1000$ kg/m³

Phantom section: Flat Section

DASY4 Configuration:

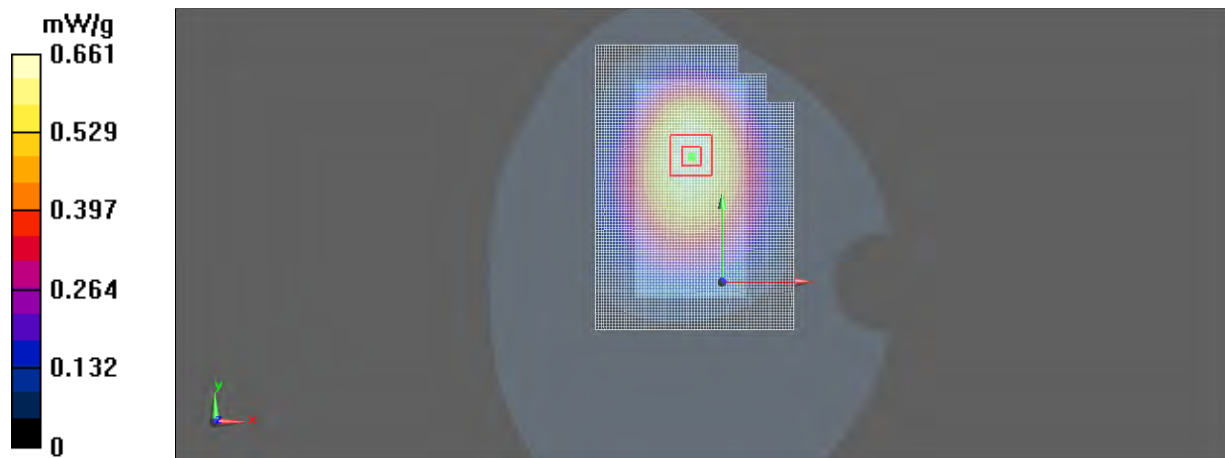
- Probe: ES3DV3 - SN3116, Probe: ES3DV3 - SN3118; Probe Notes:
- ConvF(5.96, 5.96, 5.96), ConvF(4.05, 4.05, 4.05); Calibrated: 2011-02-17, Calibrated: 2010-09-09
- Sensor-Surface: 4mm (Mechanical Surface Detection (Locations From Previous Scan Used))
- Electronics: DAE4 Sn339, Electronics: DAE4 Sn501; Calibrated: 2011-02-18
- Phantom: SAM 2, Phantom: SAM 8; Type: Twin Phantom, Type: SAM Twin Phantom; Serial: TP-1037, Serial: TP-1328
- ; SEMCAD X Version 14.0 Build 61

Configuration/Body - Low - No Accessory - Display Facing Phantom/Area Scan (8x11x1): Measurement grid: dx=15mm, dy=15mm

Configuration/Body - Middle - No Accessory - Display Facing Phantom/Area Scan (8x11x1): Measurement grid: dx=15mm, dy=15mm

Motorola Fast SAR of Combined Scans: SAR(1 g) = 0.626 mW/g
SAR(10 g) = 0.445 mW/g

Maximum value of SAR (measured) = 0.661 mW/g



Date/Time: 2011-08-10 16:50:26, Date/Time: 2011-07-08 22:33:59

Test Laboratory: TCC Nokia

Type: RM-632; Serial: 355949/04/724052/7, Serial: 357413/04/185815/5

Communication System: 2-slot GPRS1900, Communication System: WLAN2450 b-mode

Frequency: 1850.2 MHz, Frequency: 2462 MHz; Duty Cycle: 1:4.2, Duty Cycle: 1:1

Medium: Body 1900, Medium: Body 2450; Medium Notes: Medium Temperature: 21.3 C, Medium Notes:

Medium Temperature: 20.1 C

Medium parameters used (interpolated): $f = 1850.2 \text{ MHz}$; $\sigma = 1.48 \text{ mho/m}$; $\epsilon_r = 51$; $\rho = 1000 \text{ kg/m}^3$, Medium parameters used: $f = 2462 \text{ MHz}$; $\sigma = 1.99 \text{ mho/m}$; $\epsilon_r = 50.2$; $\rho = 1000 \text{ kg/m}^3$

Phantom section: Flat Section

DASY4 Configuration:

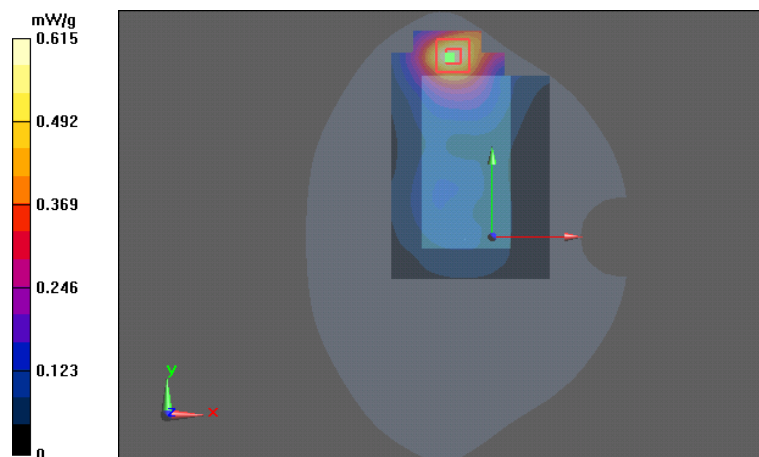
- Probe: ES3DV3 - SN3116, Probe: ES3DV3 - SN3118; Probe Notes:
- ConvF(4.68, 4.68, 4.68), ConvF(4.05, 4.05, 4.05); Calibrated: 2011-02-17, Calibrated: 2010-09-09
- Sensor-Surface: 4mm (Mechanical Surface Detection), Sensor-Surface: 4mm (Mechanical Surface Detection (Locations From Previous Scan Used))
- Electronics: DAE4 Sn710, Electronics: DAE4 Sn501; Calibrated: 2010-09-17, Calibrated: 2011-02-18
- Phantom: SAM 1, Phantom: SAM 8; Type: Twin Phantom, Type: SAM Twin Phantom; Serial: TP-1215, Serial: TP-1328
- ; SEMCAD X Version 14.0 Build 61

Configuration/Body - Low - No Accessory - Back Facing Phantom/Area Scan (8x12x1): Measurement grid: $dx=15\text{mm}$, $dy=15\text{mm}$

Configuration/Body - High - No Accessory - Back Facing Phantom/Area Scan (8x11x1): Measurement grid: $dx=15\text{mm}$, $dy=15\text{mm}$

Motorola Fast SAR of Combined Scans: SAR(1 g) = 0.556 mW/g
SAR(10 g) = 0.325 mW/g

Maximum value of SAR (measured) = 0.615 mW/g



Date/Time: 2011-08-10 17:45:56, Date/Time: 2011-07-08 21:33:33

Test Laboratory: TCC Nokia

Type: RM-632; Serial: 355949/04/724052/7, Serial: 357413/04/185815/5

Communication System: WCDMA1900, Communication System: WLAN2450 b-mode

Frequency: 1852.4 MHz, Frequency: 2442 MHz; Duty Cycle: 1:1

Medium: Body 1900, Medium: Body 2450; Medium Notes: Medium Temperature: 21.3 C, Medium Notes: Medium Temperature: 20.1 C

Medium parameters used (interpolated): $f = 1852.4$ MHz; $\sigma = 1.48$ mho/m; $\epsilon_r = 51$; $\rho = 1000$ kg/m³, Medium parameters used: $f = 2442$ MHz; $\sigma = 1.97$ mho/m; $\epsilon_r = 50.2$; $\rho = 1000$ kg/m³

Phantom section: Flat Section

DASY4 Configuration:

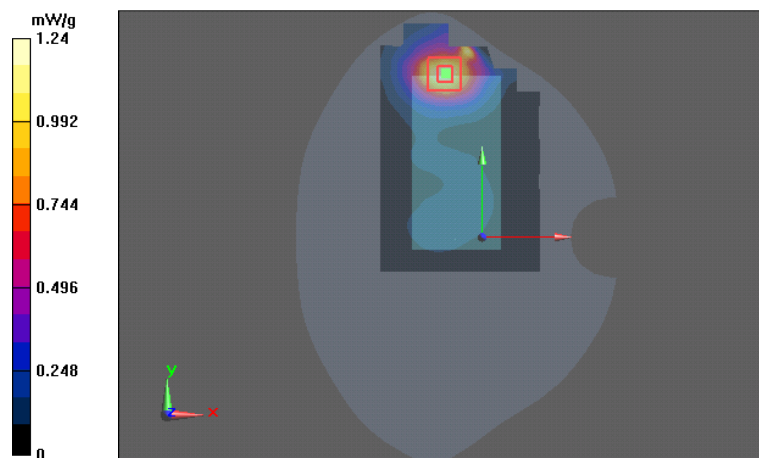
- Probe: ES3DV3 - SN3116, Probe: ES3DV3 - SN3118; Probe Notes:
- ConvF(4.68, 4.68, 4.68), ConvF(4.05, 4.05, 4.05); Calibrated: 2011-02-17, Calibrated: 2010-09-09
- Sensor-Surface: 4mm (Mechanical Surface Detection), Sensor-Surface: 4mm (Mechanical Surface Detection (Locations From Previous Scan Used))
- Electronics: DAE4 Sn710, Electronics: DAE4 Sn501; Calibrated: 2010-09-17, Calibrated: 2011-02-18
- Phantom: SAM 1, Phantom: SAM 8; Type: Twin Phantom, Type: SAM Twin Phantom; Serial: TP-1215, Serial: TP-1328
- ; SEMCAD X Version 14.0 Build 61

Configuration/Body - Low - No Accessory - Display Facing Phantom/Area Scan (8x12x1): Measurement grid: dx=15mm, dy=15mm

Configuration/Body - Middle - No Accessory - Display Facing Phantom/Area Scan (8x11x1): Measurement grid: dx=15mm, dy=15mm

Motorola Fast SAR of Combined Scans: SAR(1 g) = 1.11 mW/g
SAR(10 g) = 0.631 mW/g

Maximum value of SAR (measured) = 1.24 mW/g



APPENDIX C: RELEVANT PAGES FROM PROBE CALIBRATION REPORT(S)

See the following pages



Accredited by the Swiss Accreditation Service (SAS)

Accreditation No.: **SCS 108**

The Swiss Accreditation Service is one of the signatories to the EA
Multilateral Agreement for the recognition of calibration certificates

Client **Nokia Denmark A/S**

Certificate No: **ES3-3116_Feb11**

CALIBRATION CERTIFICATE

Object **ES3DV3 - SN:3116**

Calibration procedure(s) **QA CAL-01.v7, QA CAL-23.v4, QA CAL-25.v3
Calibration procedure for dosimetric E-field probes**

Calibration date: **February 17, 2011**

This calibration certificate documents the traceability to national standards, which realize the physical units of measurements (SI).
The measurements and the uncertainties with confidence probability are given on the following pages and are part of the certificate.

All calibrations have been conducted in the closed laboratory facility: environment temperature $(22 \pm 3)^{\circ}\text{C}$ and humidity $< 70\%$.

Calibration Equipment used (M&TE critical for calibration)

Primary Standards	ID	Cal Date (Certificate No.)	Scheduled Calibration
Power meter E4419B	GB41293874	01-Apr-10 (No. 217-01136)	Apr-11
Power sensor E4412A	MY41495277	01-Apr-10 (No. 217-01136)	Apr-11
Power sensor E4412A	MY41498087	01-Apr-10 (No. 217-01136)	Apr-11
Reference 3 dB Attenuator	SN: S5054 (3c)	30-Mar-10 (No. 217-01159)	Mar-11
Reference 20 dB Attenuator	SN: S5086 (20b)	30-Mar-10 (No. 217-01161)	Mar-11
Reference 30 dB Attenuator	SN: S5129 (30b)	30-Mar-10 (No. 217-01160)	Mar-11
Reference Probe ES3DV2	SN: 3013	29-Dec-10 (No. ES3-3013_Dec10)	Dec-11
DAE4	SN: 654	23-Apr-10 (No. DAE4-654_Apr10)	Apr-11
Secondary Standards	ID	Check Date (in house)	Scheduled Check
RF generator HP 8648C	US3642U01700	4-Aug-99 (in house check Oct-09)	In house check: Oct-11
Network Analyzer HP 8753E	US37390585	18-Oct-01 (in house check Oct-10)	In house check: Oct-11

	Name	Function	Signature
Calibrated by:	Jeton Kastrati	Laboratory Technician	
Approved by:	Katja Pokovic	Technical Manager	
Issued: February 22, 2011			
This calibration certificate shall not be reproduced except in full without written approval of the laboratory.			

DASY/EASY - Parameters of Probe: ES3DV3 - SN:3116

Calibration Parameter Determined in Head Tissue Simulating Media

f (MHz) ^C	Relative Permittivity ^F	Conductivity (S/m) ^F	ConvF X	ConvF Y	ConvF Z	Alpha	Depth (mm)	Unct. (k=2)
835	41.5	0.90	6.01	6.01	6.01	0.99	1.14	± 12.0 %
1750	40.1	1.37	5.29	5.29	5.29	0.96	1.17	± 12.0 %
1900	40.0	1.40	5.08	5.08	5.08	0.88	1.21	± 12.0 %
2450	39.2	1.80	4.50	4.50	4.50	0.78	1.31	± 12.0 %

^C Frequency validity of ± 100 MHz only applies for DASY v4.4 and higher (see Page 2), else it is restricted to ± 50 MHz. The uncertainty is the RSS of the ConvF uncertainty at calibration frequency and the uncertainty for the indicated frequency band.

^F At frequencies below 3 GHz, the validity of tissue parameters (ϵ and σ) can be relaxed to ± 10% if liquid compensation formula is applied to measured SAR values. At frequencies above 3 GHz, the validity of tissue parameters (ϵ and σ) is restricted to ± 5%. The uncertainty is the RSS of the ConvF uncertainty for indicated target tissue parameters.

DASY/EASY - Parameters of Probe: ES3DV3- SN:3116

Calibration Parameter Determined in Body Tissue Simulating Media

f (MHz) ^C	Relative Permittivity ^F	Conductivity (S/m) ^F	ConvF X	ConvF Y	ConvF Z	Alpha	Depth (mm)	Unct. (k=2)
835	55.2	0.97	5.96	5.96	5.96	0.99	1.13	± 12.0 %
1750	53.4	1.49	4.93	4.93	4.93	0.99	1.23	± 12.0 %
1900	53.3	1.52	4.68	4.68	4.68	0.89	1.29	± 12.0 %
2450	52.7	1.95	4.29	4.29	4.29	0.99	1.03	± 12.0 %

^C Frequency validity of ± 100 MHz only applies for DASY v4.4 and higher (see Page 2), else it is restricted to ± 50 MHz. The uncertainty is the RSS of the ConvF uncertainty at calibration frequency and the uncertainty for the indicated frequency band.

^F At frequencies below 3 GHz, the validity of tissue parameters (ϵ and σ) can be relaxed to ± 10% if liquid compensation formula is applied to measured SAR values. At frequencies above 3 GHz, the validity of tissue parameters (ϵ and σ) is restricted to ± 5%. The uncertainty is the RSS of the ConvF uncertainty for indicated target tissue parameters.

APPENDIX D: RELEVANT PAGES FROM DIPOLE VALIDATION KIT REPORT(S)

See the following pages



Accredited by the Swiss Accreditation Service (SAS)
 The Swiss Accreditation Service is one of the signatories to the EA
 Multilateral Agreement for the recognition of calibration certificates

Accreditation No.: **SCS 108**

Client **Nokia Denmark A/S**

Certificate No: **D835V2-4d042_Jul10**

CALIBRATION CERTIFICATE

Object **D835V2 - SN: 4d042**

Calibration procedure(s) **QA CAL-05.v7**
 Calibration procedure for dipole validation kits

Calibration date: **July 20, 2010**

This calibration certificate documents the traceability to national standards, which realize the physical units of measurements (SI).
 The measurements and the uncertainties with confidence probability are given on the following pages and are part of the certificate.

All calibrations have been conducted in the closed laboratory facility: environment temperature (22 ± 3)°C and humidity < 70%.

Calibration Equipment used (M&TE critical for calibration)

Primary Standards	ID #	Cal Date (Certificate No.)	Scheduled Calibration
Power meter EPM-442A	GB37480704	06-Oct-09 (No. 217-01086)	Oct-10
Power sensor HP 8481A	US37292783	06-Oct-09 (No. 217-01086)	Oct-10
Reference 20 dB Attenuator	SN: 5086 (20g)	30-Mar-10 (No. 217-01158)	Mar-11
Type-N mismatch combination	SN: 5047.2 / 06327	30-Mar-10 (No. 217-01162)	Mar-11
Reference Probe ES3DV3	SN: 3205	30-Apr-10 (No. ES3-3205_Apr10)	Apr-11
DAE4	SN: 601	10-Jun-10 (No. DAE4-601_Jun10)	Jun-11

Secondary Standards	ID #	Check Date (in house)	Scheduled Check
Power sensor HP 8481A	MY41092317	18-Oct-02 (in house check Oct-09)	In house check: Oct-11
RF generator R&S SMT-06	100005	4-Aug-99 (in house check Oct-09)	In house check: Oct-11
Network Analyzer HP 8753E	US37390585 S4206	18-Oct-01 (in house check Oct-09)	In house check: Oct-10

	Name	Function	Signature
Calibrated by:	Dimce Iliev	Laboratory Technician	

Approved by:	Katja Pokovic	Technical Manager
--------------	---------------	-------------------

Issued: July 20, 2010

This calibration certificate shall not be reproduced except in full without written approval of the laboratory.

DASY5 Validation Report for Head TSL

Date/Time: 12.07.2010 10:35:49

Test Laboratory: SPEAG, Zurich, Switzerland

DUT: Dipole 835 MHz; Type: D835V2; Serial: D835V2 - SN:4d042

Communication System: CW; Frequency: 835 MHz; Duty Cycle: 1:1

Medium: HSL900

Medium parameters used: $f = 835 \text{ MHz}$; $\sigma = 0.9 \text{ mho/m}$; $\epsilon_r = 42.1$; $\rho = 1000 \text{ kg/m}^3$

Phantom section: Flat Section

Measurement Standard: DASY5 (IEEE/IEC/ANSI C63.19-2007)

DASY5 Configuration:

- Probe: ES3DV3 - SN3205; ConvF(6.03, 6.03, 6.03); Calibrated: 30.04.2010
- Sensor-Surface: 3mm (Mechanical Surface Detection)
- Electronics: DAE4 Sn601; Calibrated: 10.06.2010
- Phantom: Flat Phantom 4.9L; Type: QD000P49AA; Serial: 1001
- Measurement SW: DASY52, V52.2 Build 0, Version 52.2.0 (163)
- Postprocessing SW: SEMCAD X, V14.2 Build 2, Version 14.2.2 (1685)

Pin=250 mW /d=15mm, dist=3.0mm (ES-Probe)/Zoom Scan (7x7x7) /Cube 0: Measurement
grid: dx=5mm, dy=5mm, dz=5mm

Reference Value = 57 V/m; Power Drift = 0.025 dB

Peak SAR (extrapolated) = 3.56 W/kg

SAR(1 g) = 2.38 mW/g; SAR(10 g) = 1.55 mW/g

Maximum value of SAR (measured) = 2.76 mW/g



DASY5 Validation Report for Body

Date/Time: 20.07.2010 11:38:55

Test Laboratory: SPEAG, Zurich, Switzerland

DUT: Dipole 835 MHz; Type: D835V2; Serial: D835V2 - SN:4d042

Communication System: CW; Frequency: 835 MHz; Duty Cycle: 1:1

Medium: MSL900

Medium parameters used: $f = 835 \text{ MHz}$; $\sigma = 1.01 \text{ mho/m}$; $\epsilon_r = 55$; $\rho = 1000 \text{ kg/m}^3$

Phantom section: Flat Section

Measurement Standard: DASY5 (IEEE/IEC/ANSI C63.19-2007)

DASY5 Configuration:

- Probe: ES3DV3 - SN3205; ConvF(5.86, 5.86, 5.86); Calibrated: 30.04.2010
- Sensor-Surface: 3mm (Mechanical Surface Detection)
- Electronics: DAE4 Sn601; Calibrated: 10.06.2010
- Phantom: Flat Phantom 4.9L; Type: QD000P49AA; Serial: 1001
- Measurement SW: DASY52, V52.2 Build 0, Version 52.2.0 (163)
- Postprocessing SW: SEMCAD X, V14.2 Build 2, Version 14.2.2 (1685)

Pin=250 mW /d=15mm, dist=3.0mm (ES-Probe)/Zoom Scan (7x7x7) Cube 0: Measurement grid: $dx=5\text{mm}$, $dy=5\text{mm}$, $dz=5\text{mm}$

Reference Value = 56.1 V/m; Power Drift = 0.014 dB

Peak SAR (extrapolated) = 3.78 W/kg

SAR(1 g) = 2.56 mW/g; SAR(10 g) = 1.68 mW/g

Maximum value of SAR (measured) = 2.97 mW/g

