

SAR Compliance Test Report

Test report no.:	Cph_SAR_0926_02	Date of report:	2009-06-24
Template version:	13.0	Number of pages:	48
Testing laboratory:	TCC Nokia Copenhagen Laboratory Frederikskaj 1790 COPENHAGEN V DENMARK Tel. +45 33 292929 Fax. +45 33 292934	Client:	Nokia Corporation Frederikskaj 1790 COPENHAGEN V DENMARK Tel. +45 33 292929 Fax. +45 33 292934
Responsible test engineer:	Jesper Nielsen	Product contact person:	Mohammad El-Haj
Measurements made by:	Preben Runchel & Leif Klysner		
Tested device:	RM-497		
FCC ID:	QTKRM-497	IC:	661AD-RM497
Supplement reports:	Cph_SAR_0926_03		
Testing has been carried out in accordance with:	47CFR §2.1093 Radiofrequency Radiation Exposure Evaluation: Portable Devices FCC OET Bulletin 65 (Edition 97-01), Supplement C (Edition 01-01) Evaluating Compliance with FCC Guidelines for Human Exposure to Radiofrequency Electromagnetic Fields RSS-102 Evaluation Procedure for Mobile and Portable Radio Transmitters with Respect to Health Canada's Safety Code 6 for Exposure of Humans to Radio Frequency Fields IEEE 1528 - 2003 IEEE Recommended Practice for Determining the Peak Spatial-Average Specific Absorption Rate (SAR) in the Human Head from Wireless Communications Devices: Measurement Technique		
Documentation:	The documentation of the testing performed on the tested devices is archived for 15 years at TCC Nokia.		
Test results:	The tested device complies with the requirements in respect of all parameters subject to the test. The test results and statements relate only to the items tested. The test report shall not be reproduced except in full, without written approval of the laboratory.		
Date and signatures:			
For the contents:			

CONTENTS

1. SUMMARY OF SAR TEST REPORT.....	3
1.1 TEST DETAILS.....	3
1.2 MAXIMUM RESULTS.....	3
1.2.1 Head Configuration.....	3
1.2.2 Body Worn Configuration	3
1.2.3 Maximum Drift	4
1.2.4 Measurement Uncertainty	4
2. DESCRIPTION OF THE DEVICE UNDER TEST	4
2.1 DESCRIPTION OF THE ANTENNA	4
3. TEST CONDITIONS	5
3.1 TEMPERATURE AND HUMIDITY	5
3.2 TEST SIGNAL, FREQUENCIES AND OUTPUT POWER	5
3.3 TEST CASES AND TEST MINIMISATION	5
4. DESCRIPTION OF THE TEST EQUIPMENT	8
4.1 MEASUREMENT SYSTEM AND COMPONENTS	8
4.1.1 Isotropic E-field Probe Type ES3DV3	9
4.2 PHANTOMS	9
4.3 TISSUE SIMULANTS	10
4.3.1 Tissue Simulant Recipes	10
4.3.2 System Checking	11
4.3.3 Tissue Simulants used in the Measurements.....	12
5. DESCRIPTION OF THE TEST PROCEDURE	13
5.1 DEVICE HOLDER.....	13
5.2 TEST POSITIONS.....	13
5.2.1 Against Phantom Head.....	13
5.2.2 Body Worn Configuration	14
5.3 SCAN PROCEDURES.....	14
5.4 SAR AVERAGING METHODS.....	14
6. MEASUREMENT UNCERTAINTY	15
7. RESULTS	16
APPENDIX A: SYSTEM CHECKING SCANS.....	19
APPENDIX B: MEASUREMENT SCANS.....	24
APPENDIX C: RELEVANT PAGES FROM PROBE CALIBRATION REPORT(S)	47
APPENDIX D: RELEVANT PAGES FROM DIPOLE VALIDATION KIT REPORT(S)	48

1. SUMMARY OF SAR TEST REPORT

1.1 Test Details

Period of test	2009-06-18 to 2009-06-23
SN, HW and SW numbers of tested device	SN: 004401/10/595985/8, HW: 0200, SW: sn09w09_09w20, DUT: 25088
Batteries used in testing	BL-4S (Sony), DUT: 25079, 25080, 25081, 25082 BL-4S (Sanyo), DUT: 25544, 25545, 25546, 25547
Headsets used in testing	HS-105, DUT: 25072
Other accessories used in testing	-
State of sample	Prototype unit
Notes	-

1.2 Maximum Results

The maximum measured SAR values for Head configuration and Body Worn configuration are given in section 1.2.1 and 1.2.2 respectively. The device conforms to the requirements of the standard(s) when the maximum measured SAR value is less than or equal to the limit.

1.2.1 Head Configuration

Mode	Ch / f (MHz)	Conducted power	Position	Measured SAR value (1g avg)	Scaled* SAR value (1g avg)	SAR limit (1g avg)	Result
2-slot GPRS 850	251 / 848.8	29.5 dBm	Right, Cheek	0.520 W/kg	0.58 W/kg	1.6 W/kg	PASSED
GSM 1900	810 / 1909.8	30.5 dBm	Left, Cheek	0.568 W/kg	0.64 W/kg	1.6 W/kg	PASSED

1.2.2 Body Worn Configuration

Mode	Ch / f (MHz)	Conducted power	Separation distance	Measured SAR value (1g avg)	Scaled* SAR value (1g avg)	SAR limit (1g avg)	Result
2-slot GPRS 850	128 / 824.2	29.5 dBm	1.5 cm	0.643 W/kg	0.72 W/kg	1.6 W/kg	PASSED
GSM 1900	661 / 1880.0	30.5 dBm	1.5 cm	0.331 W/kg	0.37 W/kg	1.6 W/kg	PASSED

* SAR values are scaled up by 12% to cover measurement drift. As a consequence of this upwards correction of the SAR values, the contribution of measurement drift to the overall measurement uncertainty (Section 6) is reduced to zero.

1.2.3 Maximum Drift

Maximum drift covered by 12% scaling up of the SAR values	Maximum drift during measurements
0.5dB	0.46 dB

1.2.4 Measurement Uncertainty

Expanded Uncertainty (k=2) 95%	± 25.8%
--------------------------------	---------

2. DESCRIPTION OF THE DEVICE UNDER TEST

Device category	Portable
Exposure environment	General population / uncontrolled

Modes of Operation	Bands	Modulation Mode	Duty Cycle	Transmitter Frequency Range (MHz)
GSM	850 1900	GMSK	1/8	824 – 849 1850 – 1910
GPRS	850 1900	GMSK	1/8 to 3/8	824 – 849 1850 – 1910
EGPRS	850 1900	GMSK / 8PSK	1/8 to 3/8	824 – 849 1850 – 1910
BT	2450	GFSK	1	2402 – 2480

Outside of USA and Canada, the transmitter of the device is capable of operating also in GSM/GPRS/EGPRS900 and GSM/GPRS/EGPRS1800 bands which are not part of this filing.

This device has Dual Transfer Mode capability for use at the ear. Therefore, SAR for multi slot GPRS mode was evaluated against the head profile of the phantom. Dual Transfer Mode is a feature that utilises the multi-slot GPRS capability in this device; it allows simultaneous transmission of voice and data during the same call, using the same transmitter and antenna.

2.1 Description of the Antenna

The device has an internal antenna for cellular use. The cellular antenna is located at the bottom in the back section of the keypad flip.

3. TEST CONDITIONS

3.1 Temperature and Humidity

Ambient temperature (°C):	20.5 to 22.5
Ambient humidity (RH %):	35 to 55

3.2 Test Signal, Frequencies and Output Power

The device was put into operation by using a call tester. Communication between the device and the call tester was established by air link.

The device output power was set to maximum power level for all tests; a fully charged battery was used for every test sequence.

In all operating bands the measurements were performed on lowest, middle and highest channels.

The radiated output power of the device was measured by a separate test laboratory on the same unit(s) as used for SAR testing. The results are given in the EMC report supporting this application.

3.3 Test Cases and Test Minimisation

The tested device examined in this report may not incorporate all of the features described in the text that follows, but its SAR evaluation will have been subjected to the same considerations and test logic described below.

Whilst it's possible to identify the maximum SAR test cases from inspection of the conducted power levels given in the Results tables (Section 7), different modes in the same band and multi-slot transmit GSM/GPRS modes can create some difficulties. Therefore the sequence of the SAR tests made in evaluating this device has used test logic that is based on measured SAR values. Comparison of measured SAR values in this way, can also allow some test minimization (i.e. test elimination) to be made.

For example, when SAR testing multi-slot GSM/GPRS/EGPRS modes, it is an inefficient use of test resources to fully SAR test every test configuration in each of the different modes as these modes have a fixed power relationship between them that is the same, irrespective of the test configuration. In the case of multi-slot GSM/GPRS modes, a single comparative SAR test - using the same test channel and test configuration - is made in each of the n-slot modes; the mode with the highest measured SAR value is then subjected to full SAR testing in all test configurations. These comparative SAR tests (same frequency, same test configuration) are regarded as extremely accurate as they are relative tests in which the tested device changes neither its frequency nor its position between tests. For different modes that operate in the same band and use the same antenna e.g. GSM/GPRS850 and WCDMA850, full SAR testing is carried out in the GSM/GPRS850 mode but WCDMA850 testing is limited to 3 channel testing in the maximum SAR test configuration for GSM/GPRS850.

Multi-slot SAR testing against the Head is always performed whenever such a device offers Push to Talk over cellular with the internal earpiece active, Dual Transfer Mode (i.e. the ability to transmit voice and data simultaneously using the same transmitter) or has WLAN (which enables a Voice over IP call to take place whilst the device can simultaneously transmit data on a cellular band). Whenever a device has an intended multi-slot use against the head, it is also Head SAR tested in EGPRS mode. It should be noted that EGPRS transmit modes can have either GMSK or 8PSK modulation but, when tested, only 8PSK EGPRS will appear explicitly in the results tables, as GMSK EGPRS mode has identical time-averaged power to the reported GPRS mode.

Devices that have flips or slides are fully SAR tested in all device configurations consistent with their intended usage. For example, flip phones that can receive a call in closed mode are SAR tested against the head in both open and closed configurations. Similarly, slide phones are fully SAR tested in all slide configurations in which calls are intended to be made or received.

In the results tables in Section 7, the maximum SAR value for the 'basic' tests (i.e. left cheek, left tilt, right cheek and right tilt in Head SAR testing; with and without headset with the back &/or display side facing the flat phantom in Body SAR testing) is bolded for each band. In some cases, after full testing of the basic SAR test configurations has been completed, additional checking SAR tests are made. These checking tests are always based on the bolded result from the 'basic' testing. When the SAR value of a checking test exceeds the maximum value from the basic tests, it is also bolded and used as the basis for any further checking tests that might be needed.

Checking tests are largely voluntary and can cover optional batteries, different camera slide positions, optional covers, etc. In the case of optional batteries, if the construction of the optional battery is significantly different to the battery used in the full testing e.g. if the outer can is floating electrically rather than grounded, then the maximum SAR test configuration in each band is tested with the optional battery in 3 channels. For camera slides, if the slide material is metal, then checking tests in 3 channels are again run for the maximum SAR test configuration in each band. For plastic camera slides, SAR checking is only carried out in the channel that provided the maximum SAR value for the original. Optional front and back covers are tested if their shape differs significantly from the original or if their metallic content varies by more than 15% from the original; in the former case, the testing depends on the extent of the physical differences, whereas in the latter case, 3 channel SAR testing is performed in every band in the max SAR test configuration..

4. DESCRIPTION OF THE TEST EQUIPMENT

4.1 Measurement System and Components

The measurements were performed using an automated near-field scanning system, DASY4, manufactured by Schmid & Partner Engineering AG (SPEAG) in Switzerland. The SAR extrapolation algorithm used in all measurements was the 'advanced extrapolation' algorithm.

The following table lists calibration dates of SPEAG components:

Test Equipment	Serial Number	Calibration interval	Calibration expiry
DAE3	501	12 months	2010-03
E-field Probe ES3DV3	3116	12 months	2010-03
Dipole Validation Kit, D835V2	4d042	24 months	2010-09
Dipole Validation Kit, D1900V2	5d026	24 months	2010-03
DASY4 software	Version 4.7	-	-

Additional test equipment used in testing:

Test Equipment	Model	Serial Number	Calibration interval	Calibration expiry
Signal Generator	SME06	829445/008	36 months	2012-02
Amplifier	2100-BBS3Q8CCJ	1003	-	-
Power Meter	NRP	100293	24 months	2009-07
Power Sensor	NRP-Z51	100830	24 months	2009-07
Call Tester	CMU200	105900	-	-
Call Tester	CMU200	110735	-	-
Vector Network Analyzer	AT8753ES	MY40001091	12 months	2009-08
Dielectric Probe Kit	HP85070B	US33020403	-	-

4.1.1 Isotropic E-field Probe Type ES3DV3

Construction	Symmetrical design with triangular core Interleaved sensors Built-in shielding against static charges PEEK enclosure material (resistant to organic solvents, e.g., butyl diglycol)
Calibration	Calibration certificate in Appendix C
Frequency	10 MHz to 4 GHz (dosimetry); Linearity: ± 0.2 dB (30 MHz to 4 GHz)
Directivity	± 0.2 dB in HSL (rotation around probe axis) ± 0.3 dB in HSL (rotation normal to probe axis)
Dynamic Range	5 μ W/g to > 100 mW/g; Linearity: ± 0.2 dB
Dimensions	Overall length: 330 mm Tip length: 20 mm Body diameter: 12 mm Tip diameter: 3.9 mm Distance from probe tip to dipole centers: 2.0 mm
Application	General dosimetry up to 4 GHz Compliance tests of mobile phones Fast automatic scanning in arbitrary phantoms

4.2 Phantoms

The phantom used for all tests i.e. for both system checks and device testing, was the twin-headed "SAM Phantom", manufactured by SPEAG. The phantom conforms to the requirements of IEEE 1528 - 2003.

System checking was performed using the flat section, whilst Head SAR tests used the left and right head profile sections. Body SAR testing also used the flat section between the head profiles.

The SPEAG device holder (see Section 5.1) was used to position the device in all tests whilst a tripod was used to position the validation dipoles against the flat section of phantom.

4.3 Tissue Simulants

Recommended values for the dielectric parameters of the tissue simulants are given in IEEE 1528 - 2003 and FCC Supplement C to OET Bulletin 65. All tests were carried out using simulants whose dielectric parameters were within $\pm 5\%$ of the recommended values. All tests were carried out within 24 hours of measuring the dielectric parameters.

The depth of the tissue simulant was 15.0 ± 0.5 cm measured from the ear reference point during system checking and device measurements.

4.3.1 Tissue Simulant Recipes

The following recipe(s) were used for Head and Body tissue simulant(s):

800MHz band

Ingredient	Head (% by weight)	Body (% by weight)
Deionised Water	39.74	55.97
HEC	0.25	1.21
Sugar	58.31	41.76
Preservative	0.15	0.27
Salt	1.55	0.79

1900MHz band

Ingredient	Head (% by weight)	Body (% by weight)
Deionised Water	54.88	69.02
Butyl Diglycol	44.91	30.76
Salt	0.21	0.22

4.3.2 System Checking

The manufacturer calibrates the probes annually. Dielectric parameters of the tissue simulants were measured every day using the dielectric probe kit and the network analyser. A system check measurement was made following the determination of the dielectric parameters of the simulant, using the dipole validation kit. A power level of 250 mW was supplied to the dipole antenna, which was placed under the flat section of the twin SAM phantom. The system checking results (dielectric parameters and SAR values) are given in the table below.

System checking, head tissue simulant

f [MHz]	Description	SAR [W/kg], 1g	Dielectric Parameters		Temp [°C]
			ϵ_r	σ [S/m]	
835	Reference result	2.38	41.4	0.90	
	± 10% window	2.14 - 2.62			
	2009-06-19	2.55	40.6	0.90	22.8
	2009-06-23	2.56	40.3	0.90	22.0
1900	Reference result	10.3	40.2	1.47	
	± 10% window	9.3 - 11.3			
	2009-06-18	10.8	39.9	1.46	21.3
	2009-06-22	11.1	39.3	1.48	20.6

Plots of the system checking scans are given in Appendix A.

4.3.3 Tissue Simulants used in the Measurements

Head tissue simulant measurements

f [MHz]	Description	Dielectric Parameters		Temp [°C]
		ϵ_r	σ [S/m]	
836	Recommended value	41.5	0.90	22.8
	$\pm 5\%$ window	39.4 – 43.6	0.86 – 0.95	
	2009-06-19	40.6	0.90	
1880	Recommended value	40.0	1.40	21.3
	$\pm 5\%$ window	38.0 – 42.0	1.33 – 1.47	
	2009-06-18	40.0	1.44	

Body tissue simulant measurements

f [MHz]	Description	Dielectric Parameters		Temp [°C]
		ϵ_r	σ [S/m]	
836	Recommended value	55.2	0.97	22.2
	$\pm 5\%$ window	52.4 – 58.0	0.92 – 1.02	
	2009-06-23	53.0	0.98	
1880	Recommended value	53.3	1.52	22.0
	$\pm 5\%$ window	50.6 – 56.0	1.44 – 1.60	
	2009-06-22	52.9	1.46	

5. DESCRIPTION OF THE TEST PROCEDURE

5.1 Device Holder

The device was placed in the device holder (illustrated below) that is supplied by SPEAG as an integral part of the Dasy system.



Device holder supplied by SPEAG

A Nokia designed spacer (illustrated below) was used to position the device within the SPEAG holder. The spacer positions the device so that the holder has minimal effect on the test results but still holds the device securely. The spacer was removed before the tests.



Nokia spacer

5.2 Test Positions

5.2.1 Against Phantom Head

Measurements were made in “cheek” and “tilt” positions on both the left hand and right hand sides of the phantom.

The positions used in the measurements were according to IEEE 1528 - 2003 "IEEE Recommended Practice for Determining the Peak Spatial-Average Specific Absorption Rate (SAR) in the Human Head from Wireless Communications Devices: Measurement Techniques".

5.2.2 Body Worn Configuration

The device was placed in the SPEAG holder using the Nokia spacer and placed below the flat section of the phantom. The distance between the device and the phantom was kept at the separation distance indicated in Section 1.2.2 using a separate flat spacer that was removed before the start of the measurements. The device was oriented with its back facing the phantom since this orientation gives higher results.

5.3 Scan Procedures

First, area scans were used for determination of the field distribution. Next, a zoom scan, a minimum of 5x5x7 points covering a volume of at least 30x30x30mm, was performed around the highest E-field value to determine the averaged SAR value. Drift was determined by measuring the same point at the start of the area scan and again at the end of the zoom scan.

5.4 SAR Averaging Methods

The maximum SAR value was averaged over a cube of tissue using interpolation and extrapolation.

The interpolation, extrapolation and maximum search routines within Dasy4 are all based on the modified Quadratic Shepard's method (Robert J. Renka, "Multivariate Interpolation Of Large Sets Of Scattered Data", University of North Texas ACM Transactions on Mathematical Software, vol. 14, no. 2, June 1988, pp. 139-148).

The interpolation scheme combines a least-square fitted function method with a weighted average method. A trivariate 3-D / bivariate 2-D quadratic function is computed for each measurement point and fitted to neighbouring points by a least-square method. For the zoom scan, inverse distance weighting is incorporated to fit distant points more accurately. The interpolating function is finally calculated as a weighted average of the quadratics.

In the zoom scan, the interpolation function is used to extrapolate the Peak SAR from the deepest measurement points to the inner surface of the phantom.

6. MEASUREMENT UNCERTAINTY

Table 6.1 – Measurement uncertainty evaluation

Uncertainty Component	Section in IEEE 1528	Tol. (%)	Prob Dist	Div	C_i	$C_i \cdot U_i$ (%)	V_i
Measurement System							
Probe Calibration	E2.1	±5.9	N	1	1	±5.9	∞
Axial Isotropy	E2.2	±4.7	R	√3	$(1-c_p)^{1/2}$	±1.9	∞
Hemispherical Isotropy	E2.2	±9.6	R	√3	$(c_p)^{1/2}$	±3.9	∞
Boundary Effect	E2.3	±1.0	R	√3	1	±0.6	∞
Linearity	E2.4	±4.7	R	√3	1	±2.7	∞
System Detection Limits	E2.5	±1.0	R	√3	1	±0.6	∞
Readout Electronics	E2.6	±1.0	N	1	1	±1.0	∞
Response Time	E2.7	±0.8	R	√3	1	±0.5	∞
Integration Time	E2.8	±2.6	R	√3	1	±1.5	∞
RF Ambient Conditions - Noise	E6.1	±3.0	R	√3	1	±1.7	∞
RF Ambient Conditions - Reflections	E6.1	±3.0	R	√3	1	±1.7	∞
Probe Positioner Mechanical Tolerance	E6.2	±0.4	R	√3	1	±0.2	∞
Probe Positioning with respect to Phantom Shell	E6.3	±2.9	R	√3	1	±1.7	∞
Extrapolation, interpolation and Integration Algorithms for Max. SAR Evaluation	E5	±3.9	R	√3	1	±2.3	∞
Test sample Related							
Test Sample Positioning	E4.2	±6.0	N	1	1	±6.0	11
Device Holder Uncertainty	E4.1	±5.0	N	1	1	±5.0	7
Output Power Variation - SAR drift measurement	6.6.3	±0.0	R	√3	1	±0.0	∞
Phantom and Tissue Parameters							
Phantom Uncertainty (shape and thickness tolerances)	E3.1	±4.0	R	√3	1	±2.3	∞
Conductivity Target - tolerance	E3.2	±5.0	R	√3	0.64	±1.8	∞
Conductivity - measurement uncertainty	E3.3	±5.5	N	1	0.64	±3.5	5
Permittivity Target - tolerance	E3.2	±5.0	R	√3	0.6	±1.7	∞
Permittivity - measurement uncertainty	E3.3	±2.9	N	1	0.6	±1.7	5
Combined Standard Uncertainty			RSS			±12.9	116
Coverage Factor for 95%			k=2				
Expanded Uncertainty						±25.8	

7. RESULTS

The measured Head SAR values for the test device are tabulated below:

850 MHz Head SAR results

Option used	Test configuration		SAR, averaged over 1g (W/kg)		
			Ch 128 824.2 MHz	Ch 190 836.6 MHz	Ch 251 848.8 MHz
GSM	Conducted Power			32.5 dBm	
Flip open Sony battery	Left	Cheek	-	0.344	-
		Tilt	-	-	-
	Right	Cheek	-	-	-
		Tilt	-	-	-
2-Slot GPRS	Conducted Power		29.5 dBm	29.5 dBm	29.5 dBm
Flip open Sony battery	Left	Cheek	-	0.360	-
		Tilt	-	0.139	-
	Right	Cheek	0.400	0.420	0.520
		Tilt	-	0.141	-
3-Slot GPRS	Conducted Power			27.5 dBm	
Flip open Sony battery	Left	Cheek	-	0.333	-
		Tilt	-	-	-
	Right	Cheek	-	-	-
		Tilt	-	-	-
2-Slot 8PSK EGPRS	Conducted Power				26.5 dBm
Flip open Sony battery	Left	Cheek	-	-	0.246
		Tilt	-	-	-
	Right	Cheek	-	-	-
		Tilt	-	-	-
2-Slot GPRS	Conducted Power		29.5 dBm	29.5 dBm	29.5 dBm
Flip open Sanyo battery	Right Cheek		0.386	0.434	0.509

1900 MHz Head SAR results

Option used	Test configuration		SAR, averaged over 1g (W/kg)		
			Ch 512 1850.2 MHz	Ch 661 1880.0 MHz	Ch 810 1909.8 MHz
GSM	Conducted Power		30.5 dBm	30.5 dBm	30.5 dBm
Flip open Sony battery	Left	Cheek	0.523	0.553	0.568
		Tilt	-	0.079	-
	Right	Cheek	-	0.526	-
		Tilt	-	0.091	-
2-Slot GPRS	Conducted Power			27.5 dBm	
Flip open Sony battery	Left	Cheek	-	0.525	-
		Tilt	-	-	-
	Right	Cheek	-	-	-
		Tilt	-	-	-
3-Slot GPRS	Conducted Power			27.5 dBm	
Flip open Sony battery	Left	Cheek	-	0.523	-
		Tilt	-	-	-
	Right	Cheek	-	-	-
		Tilt	-	-	-
1-Slot 8PSK EGPRS	Conducted Power				25.5 dBm
Flip open Sony battery	Left	Cheek	-	-	0.174
		Tilt	-	-	-
	Right	Cheek	-	-	-
		Tilt	-	-	-
GSM	Conducted Power		30.5 dBm	30.5 dBm	30.5 dBm
Flip open Sanyo battery	Left Cheek		0.482	0.468	0.476

The measured Body SAR values for the test device are tabulated below:

850 MHz Body SAR results

Option used	Device orientation	Test configuration	SAR, averaged over 1g (W/kg)		
			Ch 128 824.2 MHz	Ch 190 836.6 MHz	Ch 251 848.8 MHz
2-Slot GPRS		Conducted Power	29.5 dBm	29.5 dBm	29.5 dBm
Flip closed Sony battery	Back facing phantom	Without headset	0.643	0.586	0.539
		Headset HS-105	-	0.475	-
Flip closed Sanyo battery	Back facing phantom	Without headset	0.631	0.581	0.509

1900 MHz Body SAR results

Option used	Device orientation	Test configuration	SAR, averaged over 1g (W/kg)		
			Ch 512 1850.2 MHz	Ch 661 1880.0 MHz	Ch 810 1909.8 MHz
GSM		Conducted Power	30.5 dBm	30.5 dBm	30.5 dBm
Flip closed Sony battery	Back facing phantom	Without headset	-	0.318	-
		Headset HS-105	0.298	0.331	0.306
Flip closed Sanyo battery	Back facing phantom	Headset HS-105	0.324	0.330	0.295

Plots of the Measurement scans are given in Appendix B.

APPENDIX A: SYSTEM CHECKING SCANS

See the following pages

Date/Time: 2009-06-19 10:21:34

Test Laboratory: TCC Nokia
Type: D835V2; Serial: 4d042

Communication System: CW835

Frequency: 835 MHz; Duty Cycle: 1:1

Medium: Head 850; Medium Notes: Medium Temperature: 22.8 C

Medium parameters used: $f = 835$ MHz; $\sigma = 0.905$ mho/m; $\epsilon_r = 40.6$; $\rho = 1000$ kg/m³

Phantom section: Flat Section

DASY4 Configuration:

- Probe: ES3DV3 - SN3116; Probe Notes:
- ConvF(5.9, 5.9, 5.9); Calibrated: 2009-03-16
- Sensor-Surface: 4mm (Mechanical Surface Detection (Locations From Previous Scan Used))Sensor-Surface: 4mm (Mechanical Surface Detection)
- Electronics: DAE3 Sn501; Calibrated: 2009-03-12
- Phantom: SAM 4; Type: Twin Phantom; Serial: TP-1410
- Measurement SW: DASY4, V4.7 Build 71; Postprocessing SW: SEMCAD, V1.8 Build 184

d=15mm, Pin=250mW/Area Scan (61x121x1): Measurement grid: dx=10mm, dy=10mm

Maximum value of SAR (interpolated) = 2.71 mW/g

d=15mm, Pin=250mW/Zoom Scan (7x7x7) (7x7x7)/Cube 0: Measurement grid: dx=5mm, dy=5mm, dz=5mm

Reference Value = 53.8 V/m

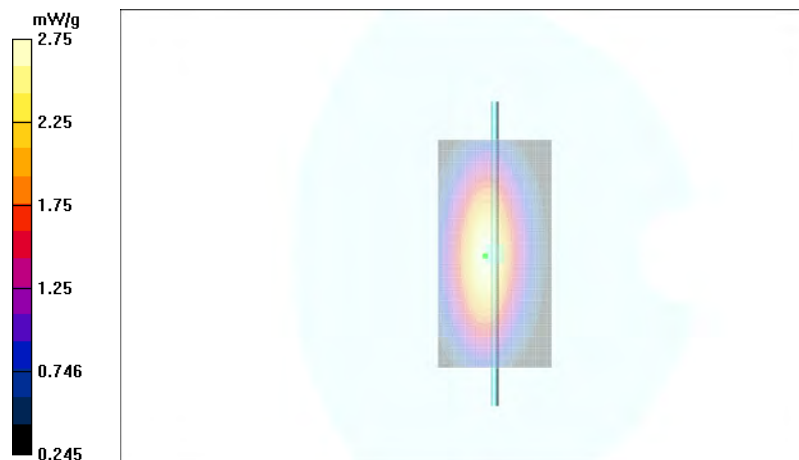
Peak SAR (extrapolated) = 3.85 W/kg

SAR(1 g) = 2.55 mW/g

SAR(10 g) = 1.65 mW/g

Power Drift = 0.062 dB

Maximum value of SAR (measured) = 2.75 mW/g



Date/Time: 2009-06-23 17:54:23

Test Laboratory: TCC Nokia
Type: D835V2; Serial: 4d042

Communication System: CW835

Frequency: 835 MHz; Duty Cycle: 1:1

Medium: Head 850; Medium Notes: Medium Temperature: 22.0 C

Medium parameters used: $f = 835$ MHz; $\sigma = 0.904$ mho/m; $\epsilon_r = 40.3$; $\rho = 1000$ kg/m³

Phantom section: Flat Section

DASY4 Configuration:

- Probe: ES3DV3 - SN3116; Probe Notes:
- ConvF(5.9, 5.9, 5.9); Calibrated: 2009-03-16
- Sensor-Surface: 4mm (Mechanical Surface Detection (Locations From Previous Scan Used))Sensor-Surface: 4mm (Mechanical Surface Detection)
- Electronics: DAE3 Sn501; Calibrated: 2009-03-12
- Phantom: SAM 4; Type: Twin Phantom; Serial: TP-1410
- Measurement SW: DASY4, V4.7 Build 71; Postprocessing SW: SEMCAD, V1.8 Build 184

d=15mm, Pin=250mW/Area Scan (61x81x1): Measurement grid: dx=15mm, dy=15mm

Maximum value of SAR (interpolated) = 2.75 mW/g

d=15mm, Pin=250mW/Zoom Scan (7x7x7) (7x7x7)/Cube 0: Measurement grid: dx=5mm, dy=5mm, dz=5mm

Reference Value = 51.5 V/m

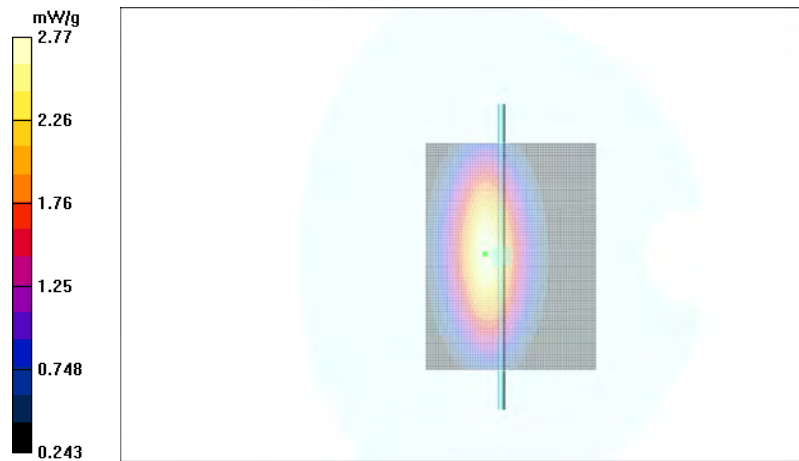
Peak SAR (extrapolated) = 3.87 W/kg

SAR(1 g) = 2.56 mW/g

SAR(10 g) = 1.66 mW/g

Power Drift = 0.018 dB

Maximum value of SAR (measured) = 2.77 mW/g



Date/Time: 2009-06-18 09:32:27

Test Laboratory: TCC Nokia
Type: D1900V2; Serial: 5d026

Communication System: CW1900

Frequency: 1900 MHz; Duty Cycle: 1:1

Medium: Head 1900; Medium Notes: Medium Temperature: 21.3 C

Medium parameters used: $f = 1900$ MHz; $\sigma = 1.46$ mho/m; $\epsilon_r = 39.9$; $\rho = 1000$ kg/m³

Phantom section: Flat Section

DASY4 Configuration:

- Probe: ES3DV3 - SN3116; Probe Notes:
- ConvF(4.88, 4.88, 4.88); Calibrated: 2009-03-16
- Sensor-Surface: 4mm (Mechanical Surface Detection)
- Electronics: DAE3 Sn501; Calibrated: 2009-03-12
- Phantom: SAM 2; Type: Twin Phantom; Serial: TP-1037
- Measurement SW: DASY4, V4.7 Build 71; Postprocessing SW: SEMCAD, V1.8 Build 184

d=10mm, Pin=250mW/Area Scan (71x71x1): Measurement grid: dx=10mm, dy=10mm

Maximum value of SAR (interpolated) = 12.3 mW/g

d=10mm, Pin=250mW/Zoom Scan (7x7x7) (7x7x7)/Cube 0: Measurement grid: dx=5mm, dy=5mm, dz=5mm

Reference Value = 92.8 V/m

Peak SAR (extrapolated) = 20.3 W/kg

SAR(1 g) = 10.8 mW/g

SAR(10 g) = 5.55 mW/g

Power Drift = -0.035 dB

Maximum value of SAR (measured) = 12.1 mW/g



Date/Time: 2009-06-22 07:58:58

Test Laboratory: TCC Nokia
Type: D1900V2; Serial: 5d026

Communication System: CW1900

Frequency: 1900 MHz; Duty Cycle: 1:1

Medium: Head 1900; Medium Notes: Medium Temperature: 20.6 C

Medium parameters used: $f = 1900$ MHz; $\sigma = 1.48$ mho/m; $\epsilon_r = 39.3$; $\rho = 1000$ kg/m³

Phantom section: Flat Section

DASY4 Configuration:

- Probe: ES3DV3 - SN3116; Probe Notes:
- ConvF(4.88, 4.88, 4.88); Calibrated: 2009-03-16
- Sensor-Surface: 4mm (Mechanical Surface Detection)
- Electronics: DAE3 Sn501; Calibrated: 2009-03-12
- Phantom: SAM 2; Type: Twin Phantom; Serial: TP-1037
- Measurement SW: DASY4, V4.7 Build 71; Postprocessing SW: SEMCAD, V1.8 Build 184

d=10mm, Pin=250mW/Area Scan (71x71x1): Measurement grid: dx=10mm, dy=10mm

Maximum value of SAR (interpolated) = 12.6 mW/g

d=10mm, Pin=250mW/Zoom Scan (7x7x7) (7x7x7)/Cube 0: Measurement grid: dx=5mm, dy=5mm, dz=5mm

Reference Value = 93.0 V/m

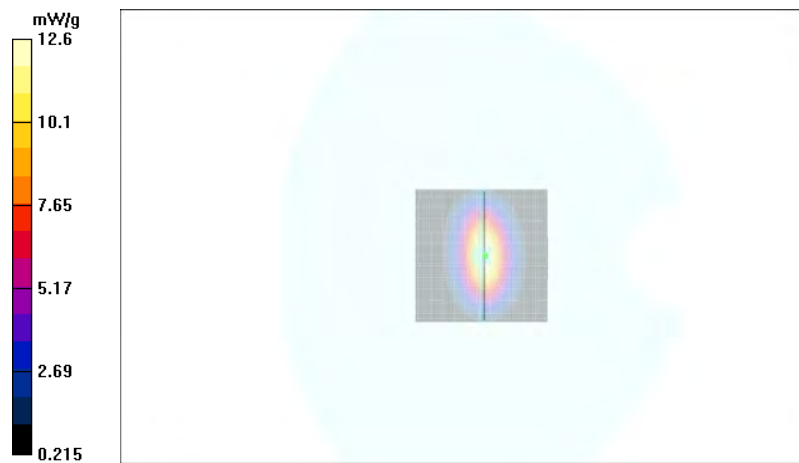
Peak SAR (extrapolated) = 21.3 W/kg

SAR(1 g) = 11.1 mW/g

SAR(10 g) = 5.67 mW/g

Power Drift = -0.038 dB

Maximum value of SAR (measured) = 12.6 mW/g



APPENDIX B: MEASUREMENT SCANS

See the following pages

Date/Time: 2009-06-19 11:16:39

Test Laboratory: TCC Nokia

Type: RM-497; Serial: 004401/10/595985/8

Communication System: GSM850

Frequency: 836.6 MHz; Duty Cycle: 1:8.3

Medium: Head 850; Medium Notes: Medium Temperature: 22.8 C

Medium parameters used: $f = 837$ MHz; $\sigma = 0.907$ mho/m; $\epsilon_r = 40.6$; $\rho = 1000$ kg/m³

Phantom section: Left Section

DASY4 Configuration:

- Probe: ES3DV3 - SN3116; Probe Notes:
- ConvF(5.9, 5.9, 5.9); Calibrated: 2009-03-16
- Sensor-Surface: 4mm (Mechanical Surface Detection)
- Electronics: DAE3 Sn501; Calibrated: 2009-03-12
- Phantom: SAM 4; Type: Twin Phantom; Serial: TP-1410
- Measurement SW: DASY4, V4.7 Build 71; Postprocessing SW: SEMCAD, V1.8 Build 184

Cheek position – Middle - Flip open – Sony battery/Area Scan (51x131x1): Measurement grid: dx=15mm, dy=15mm

Maximum value of SAR (interpolated) = 0.382 mW/g

Cheek position - Middle - Flip open – Sony battery/Zoom Scan(5x6x7)/Cube 0: Measurement grid: dx=7.5mm, dy=7.5mm, dz=5mm

Reference Value = 5.61 V/m

Peak SAR (extrapolated) = 0.447 W/kg

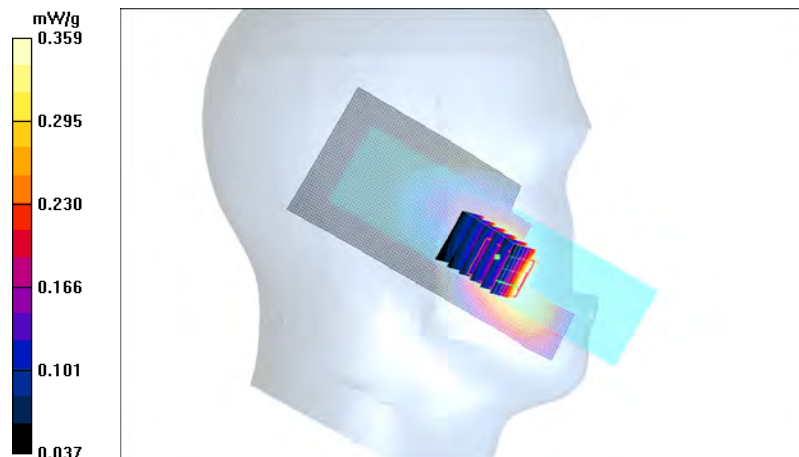
SAR(1 g) = 0.344 mW/g

SAR(10 g) = 0.256 mW/g

Power Drift = -0.270 dB

Warning: Maximum averaged SAR over 10 g is located on the boundary of the measurement cube. This cube might not incorporate the absolute averaged SAR. Please consider a refinement of the Area Scan measurement.

Maximum value of SAR (measured) = 0.359 mW/g



Date/Time: 2009-06-19 12:41:52

Test Laboratory: TCC Nokia

Type: RM-497; Serial: 004401/10/595985/8

Communication System: 2-slot GPRS850

Frequency: 836.6 MHz; Duty Cycle: 1:4.2

Medium: Head 850; Medium Notes: Medium Temperature: 22.8 C

Medium parameters used: $f = 837$ MHz; $\sigma = 0.907$ mho/m; $\epsilon_r = 40.6$; $\rho = 1000$ kg/m³

Phantom section: Left Section

DASY4 Configuration:

- Probe: ES3DV3 - SN3116; Probe Notes:
- ConvF(5.9, 5.9, 5.9); Calibrated: 2009-03-16
- Sensor-Surface: 4mm (Mechanical Surface Detection)
- Electronics: DAE3 Sn501; Calibrated: 2009-03-12
- Phantom: SAM 4; Type: Twin Phantom; Serial: TP-1410
- Measurement SW: DASY4, V4.7 Build 71; Postprocessing SW: SEMCAD, V1.8 Build 184

Cheek position - Middle - Flip open – Sony battery/Area Scan (51x131x1): Measurement grid: dx=15mm, dy=15mm

Maximum value of SAR (interpolated) = 0.395 mW/g

Cheek position - Middle - Flip open – Sony battery/Zoom Scan (7x7x7)/Cube 0: Measurement grid: dx=7.5mm, dy=7.5mm, dz=5mm

Reference Value = 5.53 V/m

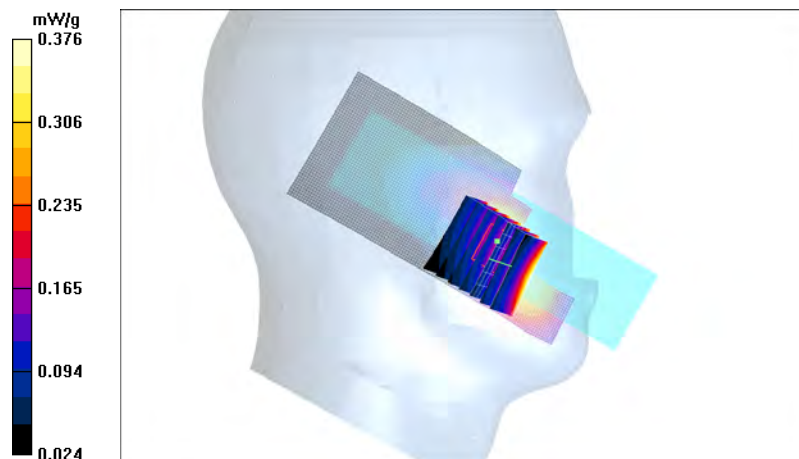
Peak SAR (extrapolated) = 0.485 W/kg

SAR(1 g) = 0.360 mW/g

SAR(10 g) = 0.269 mW/g

Power Drift = 0.013 dB

Maximum value of SAR (measured) = 0.376 mW/g



Date/Time: 2009-06-19 14:10:39

Test Laboratory: TCC Nokia

Type: RM-497; Serial: 004401/10/595985/8

Communication System: 2-slot GPRS850

Frequency: 836.6 MHz; Duty Cycle: 1:4.2

Medium: Head 850; Medium Notes: Medium Temperature: 22.8 C

Medium parameters used: $f = 837$ MHz; $\sigma = 0.907$ mho/m; $\epsilon_r = 40.6$; $\rho = 1000$ kg/m³

Phantom section: Left Section

DASY4 Configuration:

- Probe: ES3DV3 - SN3116; Probe Notes:
- ConvF(5.9, 5.9, 5.9); Calibrated: 2009-03-16
- Sensor-Surface: 4mm (Mechanical Surface Detection (Locations From Previous Scan Used))Sensor-Surface: 4mm (Mechanical Surface Detection)
- Electronics: DAE3 Sn501; Calibrated: 2009-03-12
- Phantom: SAM 4; Type: Twin Phantom; Serial: TP-1410
- Measurement SW: DASY4, V4.7 Build 71; Postprocessing SW: SEMCAD, V1.8 Build 184

Tilt position - Middle - Flip open – Sony battery/Area Scan (51x131x1): Measurement grid: dx=15mm, dy=15mm

Maximum value of SAR (interpolated) = 0.147 mW/g

Tilt position - Middle - Flip open – Sony battery/Zoom Scan (5x5x7)/Cube 0: Measurement grid: dx=7.5mm, dy=7.5mm, dz=5mm

Reference Value = 9.00 V/m

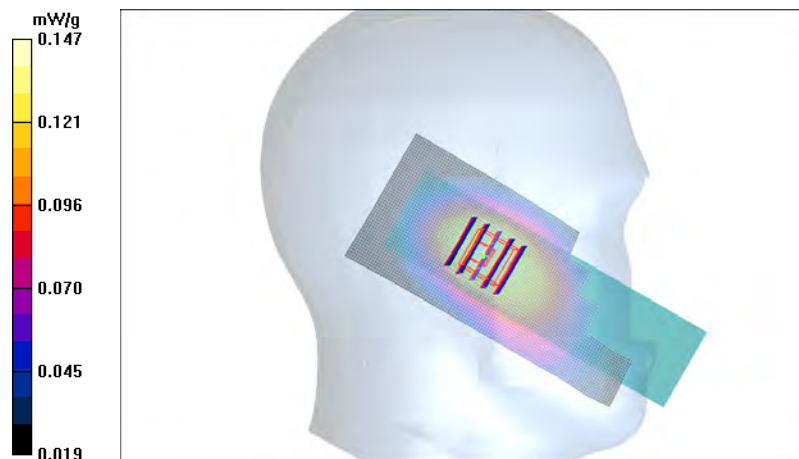
Peak SAR (extrapolated) = 0.178 W/kg

SAR(1 g) = 0.139 mW/g

SAR(10 g) = 0.104 mW/g

Power Drift = -0.026 dB

Maximum value of SAR (measured) = 0.147 mW/g



Date/Time: 2009-06-19 17:42:21

Test Laboratory: TCC Nokia

Type: RM-497; Serial: 004401/10/595985/8

Communication System: 2-slot GPRS850

Frequency: 848.8 MHz; Duty Cycle: 1:4.2

Medium: Head 850; Medium Notes: Medium Temperature: 22.8 C

Medium parameters used: $f = 849$ MHz; $\sigma = 0.919$ mho/m; $\epsilon_r = 40.4$; $\rho = 1000$ kg/m³

Phantom section: Right Section

DASY4 Configuration:

- Probe: ES3DV3 - SN3116; Probe Notes:
- ConvF(5.9, 5.9, 5.9); Calibrated: 2009-03-16
- Sensor-Surface: 4mm (Mechanical Surface Detection (Locations From Previous Scan Used))Sensor-Surface: 4mm (Mechanical Surface Detection)
- Electronics: DAE3 Sn501; Calibrated: 2009-03-12
- Phantom: SAM 4; Type: Twin Phantom; Serial: TP-1410
- Measurement SW: DASY4, V4.7 Build 71; Postprocessing SW: SEMCAD, V1.8 Build 184

Cheek position - High - Flip open – Sony battery/Area Scan (51x131x1): Measurement grid: dx=15mm, dy=15mm

Maximum value of SAR (interpolated) = 0.509 mW/g

Cheek position - High - Flip open – Sony battery/Zoom Scan (6x6x7)/Cube 0: Measurement grid: dx=7.5mm, dy=7.5mm, dz=5mm

Reference Value = 5.04 V/m

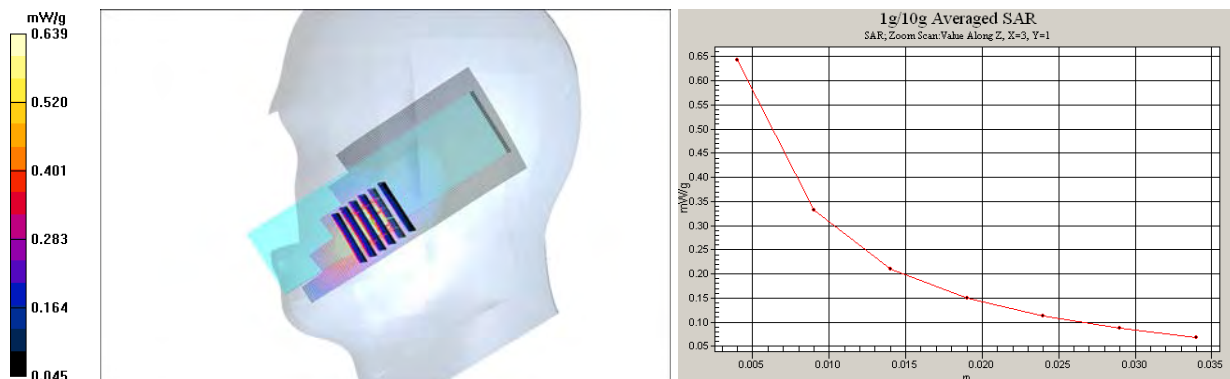
Peak SAR (extrapolated) = 1.09 W/kg

SAR(1 g) = 0.520 mW/g

SAR(10 g) = 0.317 mW/g

Power Drift = -0.043 dB

Maximum value of SAR (measured) = 0.639 mW/g



Date/Time: 2009-06-19 15:25:43

Test Laboratory: TCC Nokia

Type: RM-497; Serial: 004401/10/595985/8

Communication System: 2-slot GPRS850

Frequency: 836.6 MHz; Duty Cycle: 1:4.2

Medium: Head 850; Medium Notes: Medium Temperature: 22.8 C

Medium parameters used: $f = 837$ MHz; $\sigma = 0.907$ mho/m; $\epsilon_r = 40.6$; $\rho = 1000$ kg/m³

Phantom section: Right Section

DASY4 Configuration:

- Probe: ES3DV3 - SN3116; Probe Notes:
- ConvF(5.9, 5.9, 5.9); Calibrated: 2009-03-16
- Sensor-Surface: 4mm (Mechanical Surface Detection)
- Electronics: DAE3 Sn501; Calibrated: 2009-03-12
- Phantom: SAM 4; Type: Twin Phantom; Serial: TP-1410
- Measurement SW: DASY4, V4.7 Build 71; Postprocessing SW: SEMCAD, V1.8 Build 184

Tilt position - Middle - Flip open – Sony battery/Area Scan (51x131x1): Measurement grid: dx=15mm, dy=15mm

Maximum value of SAR (interpolated) = 0.149 mW/g

Tilt position - Middle - Flip open – Sony battery/Zoom Scan (5x5x7)/Cube 0: Measurement grid: dx=7.5mm, dy=7.5mm, dz=5mm

Reference Value = 8.85 V/m

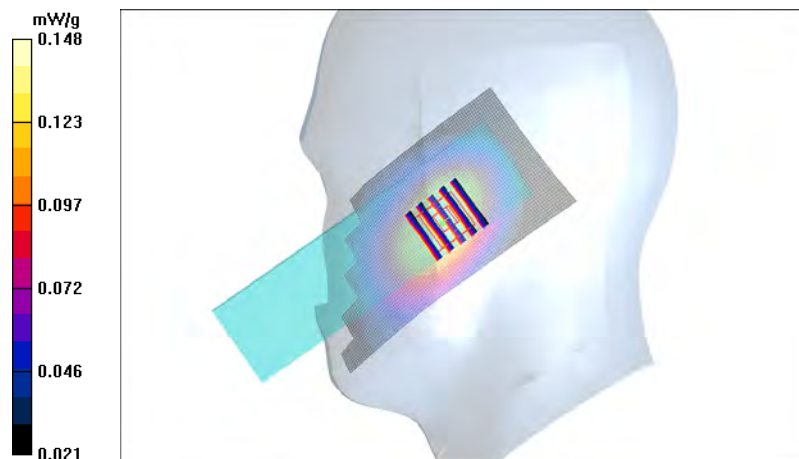
Peak SAR (extrapolated) = 0.182 W/kg

SAR(1 g) = 0.141 mW/g

SAR(10 g) = 0.104 mW/g

Power Drift = -0.049 dB

Maximum value of SAR (measured) = 0.148 mW/g



Date/Time: 2009-06-19 13:46:17

Test Laboratory: TCC Nokia

Type: RM-497; Serial: 004401/10/595985/8

Communication System: 3-slot GPRS850

Frequency: 836.6 MHz; Duty Cycle: 1:2.8

Medium: Head 850; Medium Notes: Medium Temperature: 22.8 C

Medium parameters used: $f = 837$ MHz; $\sigma = 0.907$ mho/m; $\epsilon_r = 40.6$; $\rho = 1000$ kg/m³

Phantom section: Left Section

DASY4 Configuration:

- Probe: ES3DV3 - SN3116; Probe Notes:
- ConvF(5.9, 5.9, 5.9); Calibrated: 2009-03-16
- Sensor-Surface: 4mm (Mechanical Surface Detection)
- Electronics: DAE3 Sn501; Calibrated: 2009-03-12
- Phantom: SAM 4; Type: Twin Phantom; Serial: TP-1410
- Measurement SW: DASY4, V4.7 Build 71; Postprocessing SW: SEMCAD, V1.8 Build 184

Cheek position - Middle - Flip open – Sony battery/Area Scan (51x131x1): Measurement grid: dx=15mm, dy=15mm

Maximum value of SAR (interpolated) = 0.358 mW/g

Cheek position - Middle - Flip open – Sony battery/Zoom Scan (5x5x7)/Cube 0: Measurement grid: dx=7.5mm, dy=7.5mm, dz=5mm

Reference Value = 5.71 V/m

Peak SAR (extrapolated) = 0.422 W/kg

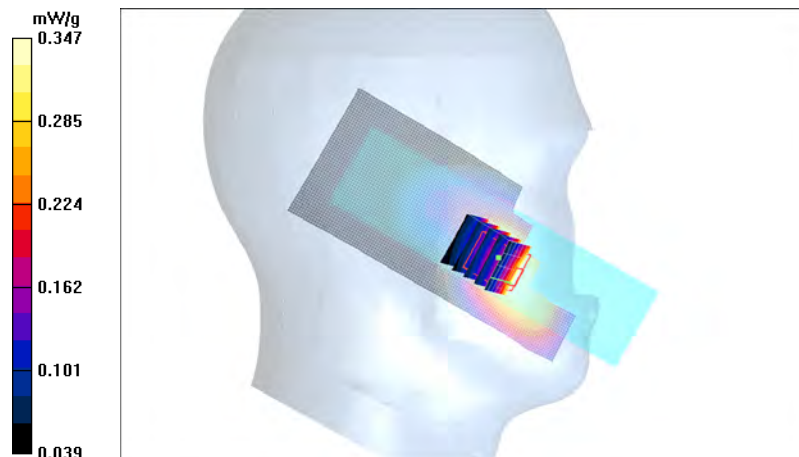
SAR(1 g) = 0.333 mW/g

SAR(10 g) = 0.245 mW/g

Power Drift = -0.093 dB

Warning: Maximum averaged SAR over 1 g is located on the boundary of the measurement cube. This cube might not incorporate the absolute averaged SAR. Please consider a refinement of the Area Scan measurement. Maximum averaged SAR over 10 g is located on the boundary of the measurement cube. This cube might not incorporate the absolute averaged SAR. Please consider a refinement of the Area Scan measurement.

Maximum value of SAR (measured) = 0.347 mW/g



Date/Time: 2009-06-19 17:59:47

Test Laboratory: TCC Nokia

Type: RM-497; Serial: 004401/10/595985/8

Communication System: 2-slot 8PSK EGPRS850

Frequency: 848.8 MHz; Duty Cycle: 1:4.2

Medium: Head 850; Medium Notes: Medium Temperature: 22.8 C

Medium parameters used: $f = 849$ MHz; $\sigma = 0.919$ mho/m; $\epsilon_r = 40.4$; $\rho = 1000$ kg/m³

Phantom section: Right Section

DASY4 Configuration:

- Probe: ES3DV3 - SN3116; Probe Notes:
- ConvF(5.9, 5.9, 5.9); Calibrated: 2009-03-16
- Sensor-Surface: 4mm (Mechanical Surface Detection)
- Electronics: DAE3 Sn501; Calibrated: 2009-03-12
- Phantom: SAM 4; Type: Twin Phantom; Serial: TP-1410
- Measurement SW: DASY4, V4.7 Build 71; Postprocessing SW: SEMCAD, V1.8 Build 184

Cheek position - High - Flip open – Sony battery/Area Scan (51x131x1): Measurement grid: dx=15mm, dy=15mm

Maximum value of SAR (interpolated) = 0.241 mW/g

Cheek position - High - Flip open – Sony battery/Zoom Scan (6x6x7)/Cube 0: Measurement grid: dx=7.5mm, dy=7.5mm, dz=5mm

Reference Value = 3.50 V/m

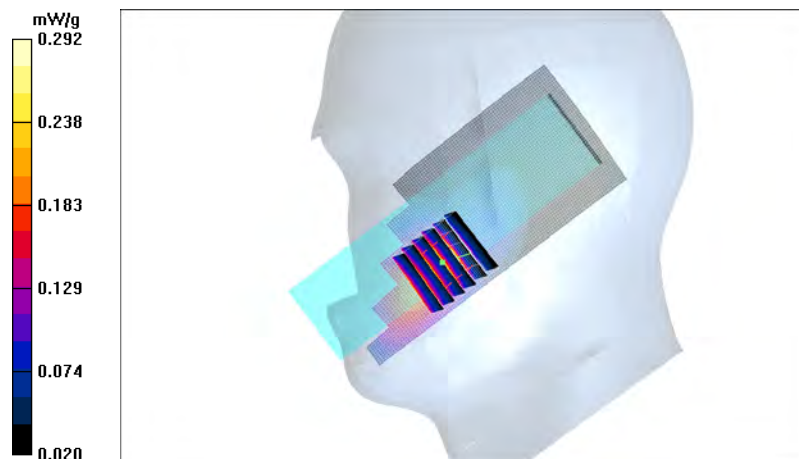
Peak SAR (extrapolated) = 0.528 W/kg

SAR(1 g) = 0.246 mW/g

SAR(10 g) = 0.148 mW/g

Power Drift = -0.174 dB

Maximum value of SAR (measured) = 0.292 mW/g



Date/Time: 2009-06-19 18:47:58

Test Laboratory: TCC Nokia

Type: RM-497; Serial: 004401/10/595985/8

Communication System: 2-slot GPRS850

Frequency: 848.8 MHz; Duty Cycle: 1:4.2

Medium: Head 850; Medium Notes: Medium Temperature: 22.8 C

Medium parameters used: $f = 849$ MHz; $\sigma = 0.919$ mho/m; $\epsilon_r = 40.4$; $\rho = 1000$ kg/m³

Phantom section: Right Section

DASY4 Configuration:

- Probe: ES3DV3 - SN3116; Probe Notes:
- ConvF(5.9, 5.9, 5.9); Calibrated: 2009-03-16
- Sensor-Surface: 4mm (Mechanical Surface Detection (Locations From Previous Scan Used))Sensor-Surface: 4mm (Mechanical Surface Detection)
- Electronics: DAE3 Sn501; Calibrated: 2009-03-12
- Phantom: SAM 4; Type: Twin Phantom; Serial: TP-1410
- Measurement SW: DASY4, V4.7 Build 71; Postprocessing SW: SEMCAD, V1.8 Build 184

Cheek position - High – Flip open - Sanyo battery/Area Scan (51x131x1): Measurement grid: dx=15mm, dy=15mm

Maximum value of SAR (interpolated) = 0.495 mW/g

Cheek position - High – Flip open - Sanyo battery/Zoom Scan (6x6x7)/Cube 0: Measurement grid: dx=7.5mm, dy=7.5mm, dz=5mm

Reference Value = 5.29 V/m

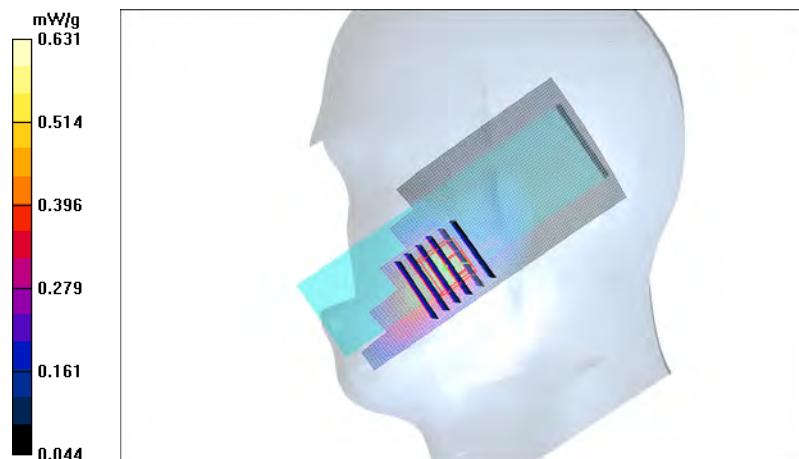
Peak SAR (extrapolated) = 1.06 W/kg

SAR(1 g) = 0.509 mW/g

SAR(10 g) = 0.307 mW/g

Power Drift = 0.004 dB

Maximum value of SAR (measured) = 0.631 mW/g



Date/Time: 2009-06-18 12:53:01

Test Laboratory: TCC Nokia

Type: RM-497; Serial: 004401/10/595985/8

Communication System: GSM 1900

Frequency: 1909.8 MHz; Duty Cycle: 1:8.3

Medium: Head 1900; Medium Notes: Medium Temperature: 21.3 C

Medium parameters used: $f = 1910$ MHz; $\sigma = 1.47$ mho/m; $\epsilon_r = 39.9$; $\rho = 1000$ kg/m³

Phantom section: Left Section

DASY4 Configuration:

- Probe: ES3DV3 - SN3116; Probe Notes:
- ConvF(4.88, 4.88, 4.88); Calibrated: 2009-03-16
- Sensor-Surface: 4mm (Mechanical Surface Detection (Locations From Previous Scan Used))Sensor-Surface: 4mm (Mechanical Surface Detection)
- Electronics: DAE3 Sn501; Calibrated: 2009-03-12
- Phantom: SAM 2; Type: Twin Phantom; Serial: TP-1037
- Measurement SW: DASY4, V4.7 Build 71; Postprocessing SW: SEMCAD, V1.8 Build 184

Cheek position - High - Flip open – Sony battery/Area Scan (51x131x1): Measurement grid: dx=15mm, dy=15mm

Maximum value of SAR (interpolated) = 0.646 mW/g

Cheek position - High - Flip open – Sony battery/Zoom Scan (5x5x7)/Cube 0: Measurement grid: dx=7.5mm, dy=7.5mm, dz=5mm

Reference Value = 1.75 V/m

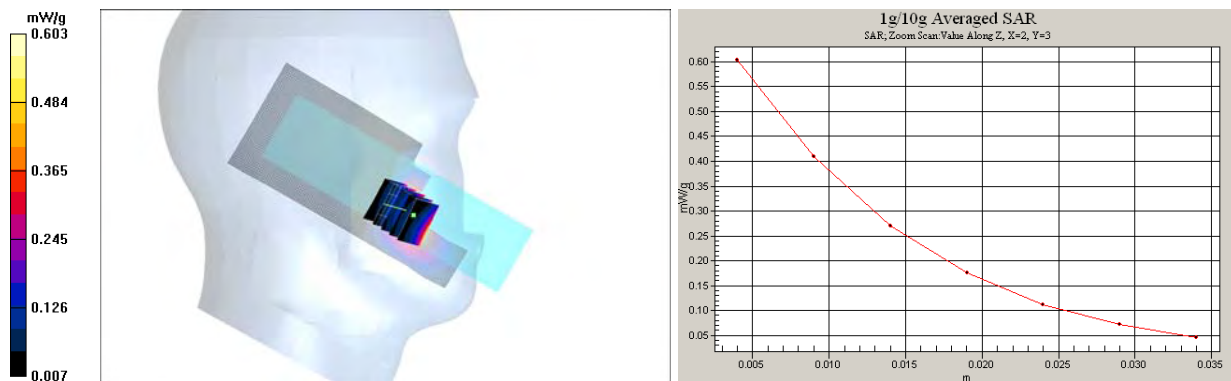
Peak SAR (extrapolated) = 0.873 W/kg

SAR(1 g) = 0.568 mW/g

SAR(10 g) = 0.339 mW/g

Power Drift = 0.373 dB

Maximum value of SAR (measured) = 0.603 mW/g



Date/Time: 2009-06-18 11:51:27

Test Laboratory: TCC Nokia

Type: RM-497; Serial: 004401/10/595985/8

Communication System: GSM 1900

Frequency: 1880 MHz; Duty Cycle: 1:8.3

Medium: Head 1900; Medium Notes: Medium Temperature: 21.3 C

Medium parameters used: $f = 1880$ MHz; $\sigma = 1.44$ mho/m; $\epsilon_r = 40$; $\rho = 1000$ kg/m³

Phantom section: Left Section

DASY4 Configuration:

- Probe: ES3DV3 - SN3116; Probe Notes:
- ConvF(4.88, 4.88, 4.88); Calibrated: 2009-03-16
- Sensor-Surface: 4mm (Mechanical Surface Detection (Locations From Previous Scan Used))Sensor-Surface: 4mm (Mechanical Surface Detection)
- Electronics: DAE3 Sn501; Calibrated: 2009-03-12
- Phantom: SAM 2; Type: Twin Phantom; Serial: TP-1037
- Measurement SW: DASY4, V4.7 Build 71; Postprocessing SW: SEMCAD, V1.8 Build 184

Tilt position - Middle - Flip open – Sony battery/Area Scan (51x131x1): Measurement grid: dx=15mm, dy=15mm

Maximum value of SAR (interpolated) = 0.087 mW/g

Tilt position - Middle - Flip open – Sony battery/Zoom Scan (5x5x7)/Cube 0: Measurement grid: dx=7.5mm, dy=7.5mm, dz=5mm

Reference Value = 5.85 V/m

Peak SAR (extrapolated) = 0.114 W/kg

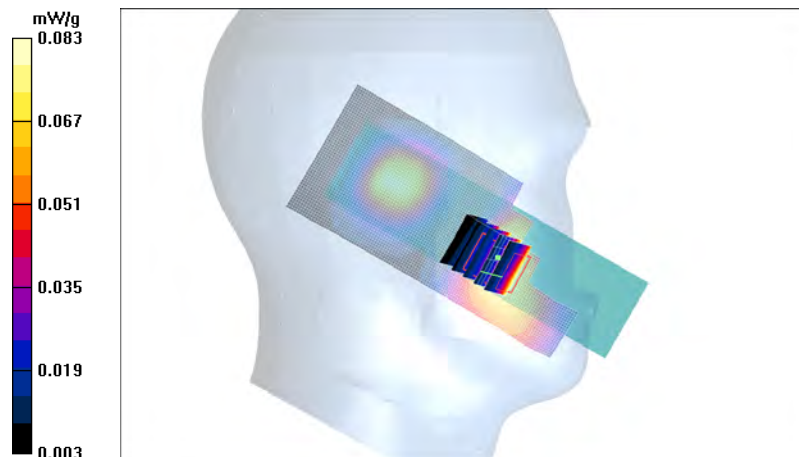
SAR(1 g) = 0.079 mW/g

SAR(10 g) = 0.052 mW/g

Power Drift = -0.020 dB

Warning: Maximum averaged SAR over 10 g is located on the boundary of the measurement cube. This cube might not incorporate the absolute averaged SAR. Please consider a refinement of the Area Scan measurement.

Maximum value of SAR (measured) = 0.083 mW/g



Date/Time: 2009-06-18 12:09:45

Test Laboratory: TCC Nokia

Type: RM-497; Serial: 004401/10/595985/8

Communication System: GSM 1900

Frequency: 1880 MHz; Duty Cycle: 1:8.3

Medium: Head 1900; Medium Notes: Medium Temperature: 21.3 C

Medium parameters used: $f = 1880$ MHz; $\sigma = 1.44$ mho/m; $\epsilon_r = 40$; $\rho = 1000$ kg/m³

Phantom section: Right Section

DASY4 Configuration:

- Probe: ES3DV3 - SN3116; Probe Notes:
- ConvF(4.88, 4.88, 4.88); Calibrated: 2009-03-16
- Sensor-Surface: 4mm (Mechanical Surface Detection)
- Electronics: DAE3 Sn501; Calibrated: 2009-03-12
- Phantom: SAM 2; Type: Twin Phantom; Serial: TP-1037
- Measurement SW: DASY4, V4.7 Build 71; Postprocessing SW: SEMCAD, V1.8 Build 184

Cheek position - Middle - Flip open – Sony battery/Area Scan (51x131x1): Measurement grid: dx=15mm, dy=15mm

Maximum value of SAR (interpolated) = 0.628 mW/g

Cheek position - Middle - Flip open – Sony battery/Zoom Scan (5x5x7)/Cube 0: Measurement grid: dx=7.5mm, dy=7.5mm, dz=5mm

Reference Value = 1.88 V/m

Peak SAR (extrapolated) = 0.795 W/kg

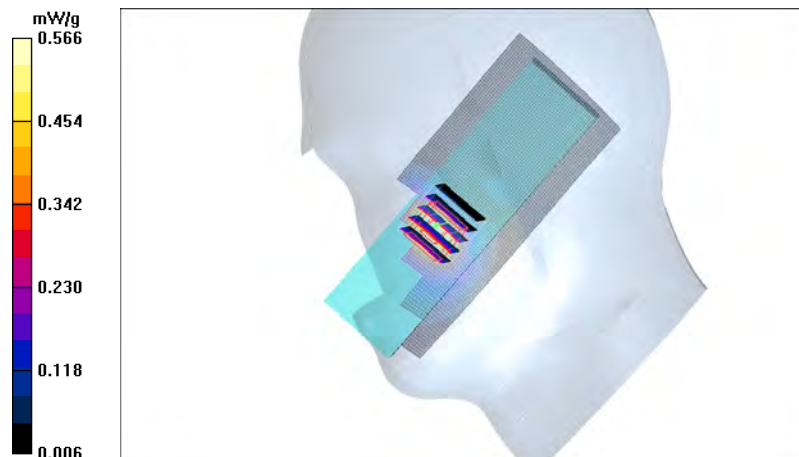
SAR(1 g) = 0.526 mW/g

SAR(10 g) = 0.315 mW/g

Power Drift = -0.102 dB

Warning: Maximum averaged SAR over 10 g is located on the boundary of the measurement cube. This cube might not incorporate the absolute averaged SAR. Please consider a refinement of the Area Scan measurement.

Maximum value of SAR (measured) = 0.566 mW/g



Date/Time: 2009-06-18 12:24:13

Test Laboratory: TCC Nokia

Type: RM-497; Serial: 004401/10/595985/8

Communication System: GSM 1900

Frequency: 1880 MHz; Duty Cycle: 1:8.3

Medium: Head 1900; Medium Notes: Medium Temperature: 21.3 C

Medium parameters used: $f = 1880$ MHz; $\sigma = 1.44$ mho/m; $\epsilon_r = 40$; $\rho = 1000$ kg/m³

Phantom section: Right Section

DASY4 Configuration:

- Probe: ES3DV3 - SN3116; Probe Notes:
- ConvF(4.88, 4.88, 4.88); Calibrated: 2009-03-16
- Sensor-Surface: 4mm (Mechanical Surface Detection (Locations From Previous Scan Used))Sensor-Surface: 4mm (Mechanical Surface Detection)
- Electronics: DAE3 Sn501; Calibrated: 2009-03-12
- Phantom: SAM 2; Type: Twin Phantom; Serial: TP-1037
- Measurement SW: DASY4, V4.7 Build 71; Postprocessing SW: SEMCAD, V1.8 Build 184

Tilt position - Middle - Flip open – Sony battery/Area Scan (51x131x1): Measurement grid: dx=15mm, dy=15mm

Maximum value of SAR (interpolated) = 0.112 mW/g

Tilt position - Middle - Flip open – Sony battery/Zoom Scan (5x5x7)/Cube 0: Measurement grid: dx=7.5mm, dy=7.5mm, dz=5mm

Reference Value = 6.00 V/m

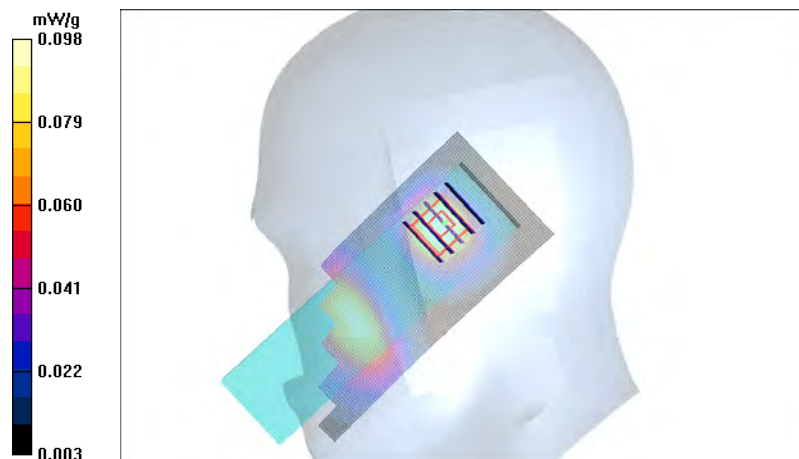
Peak SAR (extrapolated) = 0.137 W/kg

SAR(1 g) = 0.091 mW/g

SAR(10 g) = 0.056 mW/g

Power Drift = 0.028 dB

Maximum value of SAR (measured) = 0.098 mW/g



Date/Time: 2009-06-18 11:06:03

Test Laboratory: TCC Nokia

Type: RM-497; Serial: 004401/10/595985/8

Communication System: 2-slot GPRS1900

Frequency: 1880 MHz; Duty Cycle: 1:4.2

Medium: Head 1900; Medium Notes: Medium Temperature: 21.3 C

Medium parameters used: $f = 1880$ MHz; $\sigma = 1.44$ mho/m; $\epsilon_r = 40$; $\rho = 1000$ kg/m³

Phantom section: Left Section

DASY4 Configuration:

- Probe: ES3DV3 - SN3116; Probe Notes:
- ConvF(4.88, 4.88, 4.88); Calibrated: 2009-03-16
- Sensor-Surface: 4mm (Mechanical Surface Detection)
- Electronics: DAE3 Sn501; Calibrated: 2009-03-12
- Phantom: SAM 2; Type: Twin Phantom; Serial: TP-1037
- Measurement SW: DASY4, V4.7 Build 71; Postprocessing SW: SEMCAD, V1.8 Build 184

Cheek position - Middle - Flip open – Sony battery/Area Scan (51x131x1): Measurement grid: dx=15mm, dy=15mm

Maximum value of SAR (interpolated) = 0.618 mW/g

Cheek position - Middle - Flip open – Sony battery/Zoom Scan (5x5x7)/Cube 0: Measurement grid: dx=7.5mm, dy=7.5mm, dz=5mm

Reference Value = 1.88 V/m

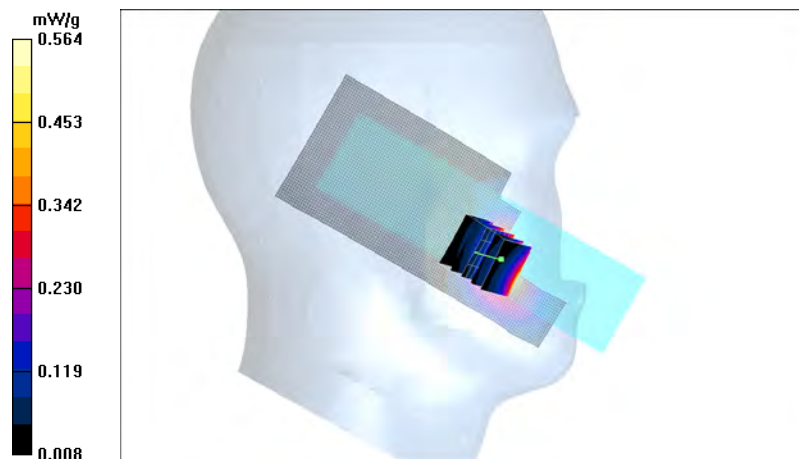
Peak SAR (extrapolated) = 0.803 W/kg

SAR(1 g) = 0.525 mW/g

SAR(10 g) = 0.316 mW/g

Power Drift = -0.124 dB

Maximum value of SAR (measured) = 0.564 mW/g



Date/Time: 2009-06-18 11:21:22

Test Laboratory: TCC Nokia

Type: RM-497; Serial: 004401/10/595985/8

Communication System: 3-slot GPRS1900

Frequency: 1880 MHz; Duty Cycle: 1:2.8

Medium: Head 1900; Medium Notes: Medium Temperature: 21.3 C

Medium parameters used: $f = 1880$ MHz; $\sigma = 1.44$ mho/m; $\epsilon_r = 40$; $\rho = 1000$ kg/m³

Phantom section: Left Section

DASY4 Configuration:

- Probe: ES3DV3 - SN3116; Probe Notes:
- ConvF(4.88, 4.88, 4.88); Calibrated: 2009-03-16
- Sensor-Surface: 4mm (Mechanical Surface Detection)
- Electronics: DAE3 Sn501; Calibrated: 2009-03-12
- Phantom: SAM 2; Type: Twin Phantom; Serial: TP-1037
- Measurement SW: DASY4, V4.7 Build 71; Postprocessing SW: SEMCAD, V1.8 Build 184

Cheek position - Middle - Flip open – Sony battery/Area Scan (51x131x1): Measurement grid: dx=15mm, dy=15mm

Maximum value of SAR (interpolated) = 0.609 mW/g

Cheek position - Middle - Flip open – Sony battery/Zoom Scan (5x5x7)/Cube 0: Measurement grid: dx=7.5mm, dy=7.5mm, dz=5mm

Reference Value = 1.82 V/m

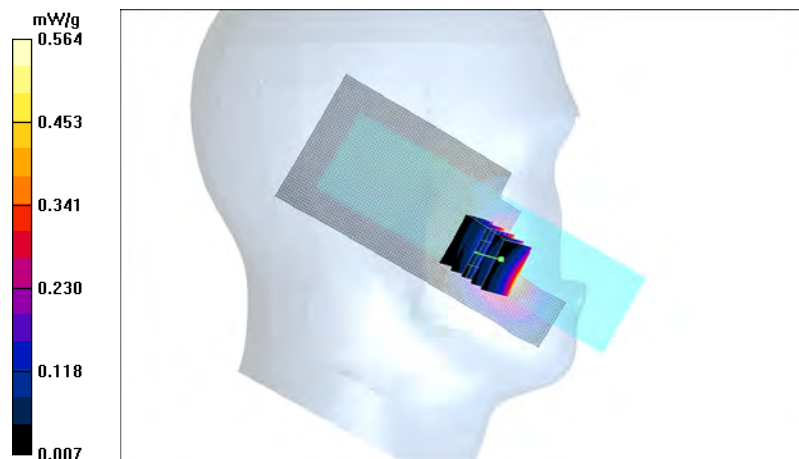
Peak SAR (extrapolated) = 0.802 W/kg

SAR(1 g) = 0.523 mW/g

SAR(10 g) = 0.316 mW/g

Power Drift = 0.179 dB

Maximum value of SAR (measured) = 0.564 mW/g



Date/Time: 2009-06-18 14:50:03

Test Laboratory: TCC Nokia

Type: RM-497; Serial: 004401/10/595985/8

Communication System: 1-slot 8PSK EGPRS 1900

Frequency: 1909.8 MHz; Duty Cycle: 1:8.3

Medium: Head 1900; Medium Notes: Medium Temperature: 21.3 C

Medium parameters used: $f = 1910$ MHz; $\sigma = 1.47$ mho/m; $\epsilon_r = 39.9$; $\rho = 1000$ kg/m³

Phantom section: Left Section

DASY4 Configuration:

- Probe: ES3DV3 - SN3116; Probe Notes:
- ConvF(4.88, 4.88, 4.88); Calibrated: 2009-03-16
- Sensor-Surface: 4mm (Mechanical Surface Detection (Locations From Previous Scan Used))Sensor-Surface: 4mm (Mechanical Surface Detection)
- Electronics: DAE3 Sn501; Calibrated: 2009-03-12
- Phantom: SAM 2; Type: Twin Phantom; Serial: TP-1037
- Measurement SW: DASY4, V4.7 Build 71; Postprocessing SW: SEMCAD, V1.8 Build 184

Cheek position - High – Flip open - Sony battery/Area Scan (51x131x1): Measurement grid: dx=15mm, dy=15mm

Maximum value of SAR (interpolated) = 0.215 mW/g

Cheek position - High – Flip open - Sony battery/Zoom Scan (5x5x7)/Cube 0: Measurement grid: dx=7.5mm, dy=7.5mm, dz=5mm

Reference Value = 1.20 V/m

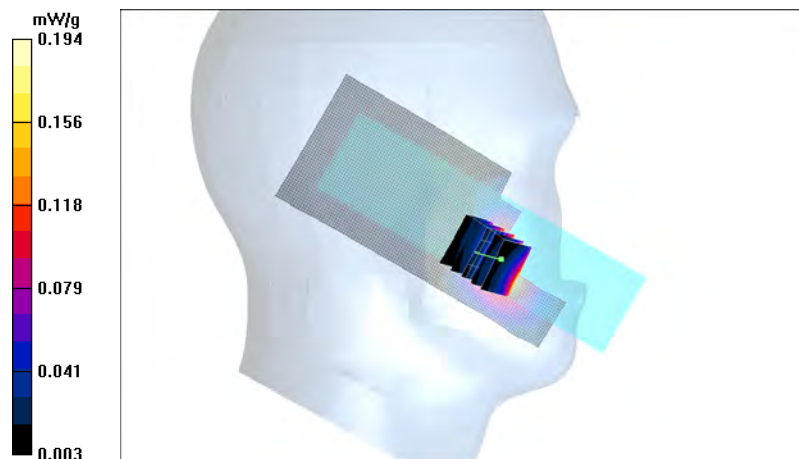
Peak SAR (extrapolated) = 0.275 W/kg

SAR(1 g) = 0.174 mW/g

SAR(10 g) = 0.105 mW/g

Power Drift = -0.385 dB

Maximum value of SAR (measured) = 0.194 mW/g



Date/Time: 2009-06-18 13:08:34

Test Laboratory: TCC Nokia

Type: RM-497; Serial: 004401/10/595985/8

Communication System: GSM 1900

Frequency: 1850.2 MHz; Duty Cycle: 1:8.3

Medium: Head 1900; Medium Notes: Medium Temperature: 21.3 C

Medium parameters used (interpolated): $f = 1850.2$ MHz; $\sigma = 1.41$ mho/m; $\epsilon_r = 40.1$; $\rho = 1000$ kg/m³

Phantom section: Left Section

DASY4 Configuration:

- Probe: ES3DV3 - SN3116; Probe Notes:
- ConvF(4.88, 4.88, 4.88); Calibrated: 2009-03-16
- Sensor-Surface: 4mm (Mechanical Surface Detection (Locations From Previous Scan Used))Sensor-Surface: 4mm (Mechanical Surface Detection)
- Electronics: DAE3 Sn501; Calibrated: 2009-03-12
- Phantom: SAM 2; Type: Twin Phantom; Serial: TP-1037
- Measurement SW: DASY4, V4.7 Build 71; Postprocessing SW: SEMCAD, V1.8 Build 184

Cheek position - Low - Flip open - Sanyo Battery/Area Scan (51x131x1): Measurement grid: dx=15mm, dy=15mm

Maximum value of SAR (interpolated) = 0.550 mW/g

Cheek position - Low - Flip open - Sanyo Battery/Zoom Scan (5x5x7)/Cube 0: Measurement grid: dx=7.5mm, dy=7.5mm, dz=5mm

Reference Value = 1.76 V/m

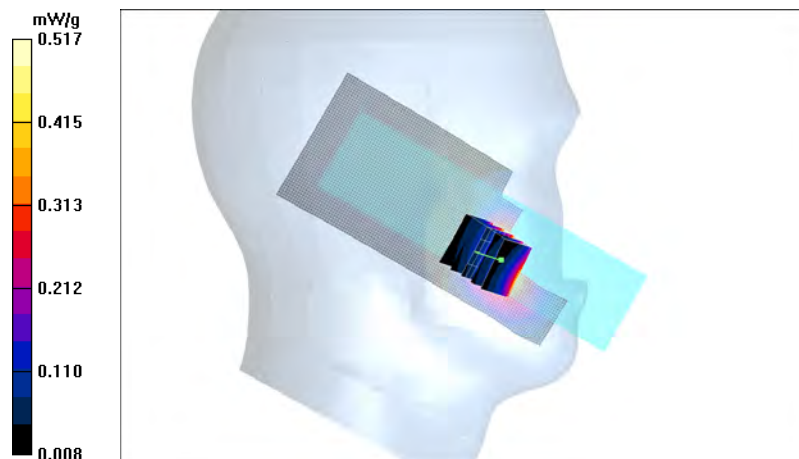
Peak SAR (extrapolated) = 0.732 W/kg

SAR(1 g) = 0.482 mW/g

SAR(10 g) = 0.293 mW/g

Power Drift = 0.396 dB

Maximum value of SAR (measured) = 0.517 mW/g



Date/Time: 2009-06-23 18:49:30

Test Laboratory: TCC Nokia

Type: RM-497; Serial: 004401/10/595985/8

Communication System: 2-slot GPRS850

Frequency: 824.2 MHz; Duty Cycle: 1:4.2

Medium: Body 850; Medium Notes: Medium Temperature: 22.2 C

Medium parameters used (interpolated): $f = 824.2$ MHz; $\sigma = 0.972$ mho/m; $\epsilon_r = 53.1$; $\rho = 1000$ kg/m³

Phantom section: Flat Section

DASY4 Configuration:

- Probe: ES3DV3 - SN3116; Probe Notes:
- ConvF(5.79, 5.79, 5.79); Calibrated: 2009-03-16
- Sensor-Surface: 4mm (Mechanical Surface Detection)
- Electronics: DAE3 Sn501; Calibrated: 2009-03-12
- Phantom: SAM 5; Type: Twin Phantom; Serial: TP-1412
- Measurement SW: DASY4, V4.7 Build 71; Postprocessing SW: SEMCAD, V1.8 Build 184

Body - Low - No Accessory - Flip closed - Back facing phantom - Sony battery/Area Scan (51x101x1):

Measurement grid: dx=15mm, dy=15mm

Maximum value of SAR (interpolated) = 0.683 mW/g

Body - Low - No Accessory - Flip closed - Back facing phantom - Sony battery/Zoom Scan (5x5x7)/Cube 0:

Measurement grid: dx=7.5mm, dy=7.5mm, dz=5mm

Reference Value = 21.7 V/m

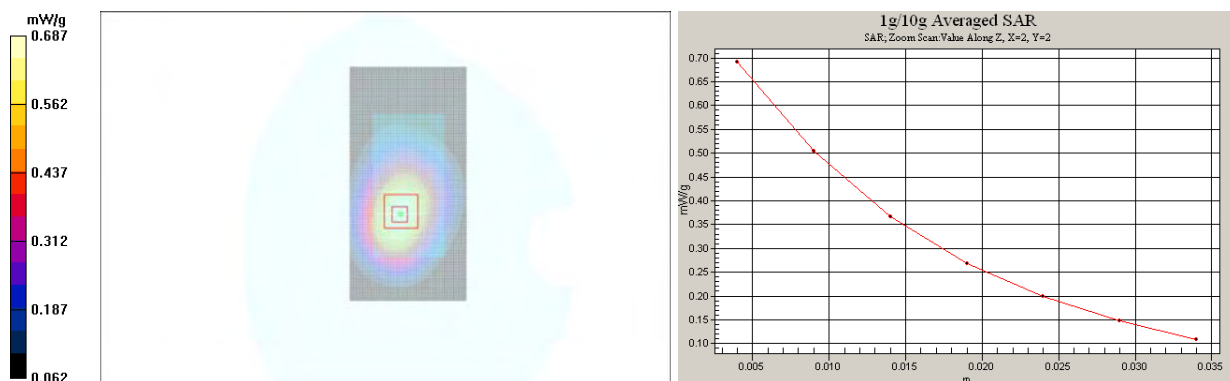
Peak SAR (extrapolated) = 0.891 W/kg

SAR(1 g) = 0.643 mW/g

SAR(10 g) = 0.445 mW/g

Power Drift = -0.108 dB

Maximum value of SAR (measured) = 0.687 mW/g



Date/Time: 2009-06-23 19:12:49

Test Laboratory: TCC Nokia

Type: RM-497; Serial: 004401/10/595985/8

Communication System: 2-slot GPRS850

Frequency: 836.6 MHz; Duty Cycle: 1:4.2

Medium: Body 850; Medium Notes: Medium Temperature: 22.2 C

Medium parameters used: $f = 837$ MHz; $\sigma = 0.986$ mho/m; $\epsilon_r = 53$; $\rho = 1000$ kg/m³

Phantom section: Flat Section

DASY4 Configuration:

- Probe: ES3DV3 - SN3116; Probe Notes:
- ConvF(5.79, 5.79, 5.79); Calibrated: 2009-03-16
- Sensor-Surface: 4mm (Mechanical Surface Detection (Locations From Previous Scan Used))Sensor-Surface: 4mm (Mechanical Surface Detection)
- Electronics: DAE3 Sn501; Calibrated: 2009-03-12
- Phantom: SAM 5; Type: Twin Phantom; Serial: TP-1412
- Measurement SW: DASY4, V4.7 Build 71; Postprocessing SW: SEMCAD, V1.8 Build 184

Body - Middle - HS-105 – Flip closed - Back facing phantom – Sony battery/Area Scan (51x101x1): Measurement grid: dx=15mm, dy=15mm

Maximum value of SAR (interpolated) = 0.505 mW/g

Body - Middle - HS-105 – Flip closed - Back facing phantom – Sony battery/Zoom Scan (5x5x7)/Cube 0:

Measurement grid: dx=7.5mm, dy=7.5mm, dz=5mm

Reference Value = 18.7 V/m

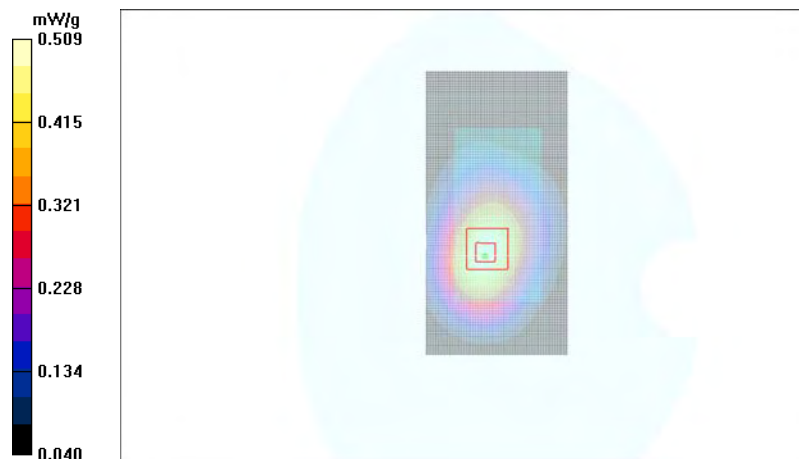
Peak SAR (extrapolated) = 0.659 W/kg

SAR(1 g) = 0.475 mW/g

SAR(10 g) = 0.326 mW/g

Power Drift = 0.006 dB

Maximum value of SAR (measured) = 0.509 mW/g



Date/Time: 2009-06-23 19:35:14

Test Laboratory: TCC Nokia

Type: RM-497; Serial: 004401/10/595985/8

Communication System: 2-slot GPRS850

Frequency: 824.2 MHz; Duty Cycle: 1:4.2

Medium: Body 850; Medium Notes: Medium Temperature: 22.2 C

Medium parameters used (interpolated): $f = 824.2$ MHz; $\sigma = 0.972$ mho/m; $\epsilon_r = 53.1$; $\rho = 1000$ kg/m³

Phantom section: Flat Section

DASY4 Configuration:

- Probe: ES3DV3 - SN3116; Probe Notes:
- ConvF(5.79, 5.79, 5.79); Calibrated: 2009-03-16
- Sensor-Surface: 4mm (Mechanical Surface Detection (Locations From Previous Scan Used))Sensor-Surface: 4mm (Mechanical Surface Detection)
- Electronics: DAE3 Sn501; Calibrated: 2009-03-12
- Phantom: SAM 5; Type: Twin Phantom; Serial: TP-1412
- Measurement SW: DASY4, V4.7 Build 71; Postprocessing SW: SEMCAD, V1.8 Build 184

Body - Low - No Accessory – Flip closed - Back facing phantom - Sanyo battery/Area Scan (51x101x1):

Measurement grid: dx=15mm, dy=15mm

Maximum value of SAR (interpolated) = 0.675 mW/g

Body - Low - No Accessory – Flip closed - Back facing phantom - Sanyo battery/Zoom Scan (5x5x7)/Cube 0:

Measurement grid: dx=7.5mm, dy=7.5mm, dz=5mm

Reference Value = 20.7 V/m

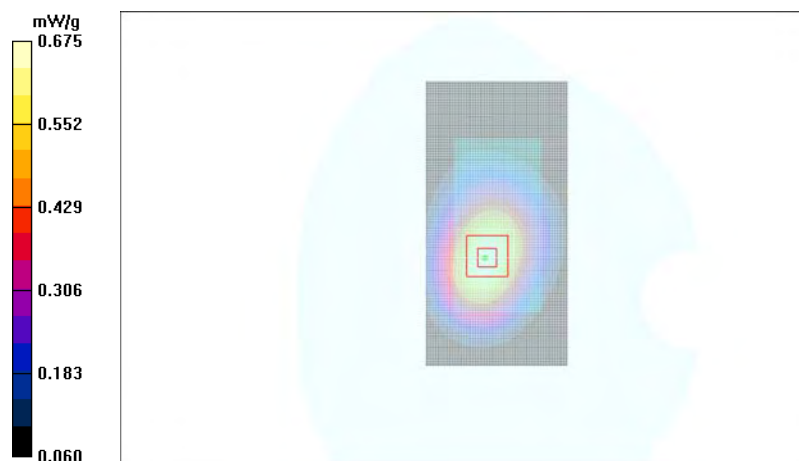
Peak SAR (extrapolated) = 0.862 W/kg

SAR(1 g) = 0.631 mW/g

SAR(10 g) = 0.438 mW/g

Power Drift = -0.003 dB

Maximum value of SAR (measured) = 0.675 mW/g



Date/Time: 2009-06-22 20:15:30

Test Laboratory: TCC Nokia

Type: RM-497; Serial: 004401/10/595985/8

Communication System: GSM 1900

Frequency: 1880 MHz; Duty Cycle: 1:8.3

Medium: Body 1900; Medium Notes: Medium Temperature: 22.0 C

Medium parameters used: $f = 1880$ MHz; $\sigma = 1.46$ mho/m; $\epsilon_r = 52.9$; $\rho = 1000$ kg/m³

Phantom section: Flat Section

DASY4 Configuration:

- Probe: ES3DV3 - SN3116; Probe Notes:
- ConvF(4.55, 4.55, 4.55); Calibrated: 2009-03-16
- Sensor-Surface: 4mm (Mechanical Surface Detection (Locations From Previous Scan Used))Sensor-Surface: 4mm (Mechanical Surface Detection)
- Electronics: DAE3 Sn501; Calibrated: 2009-03-12
- Phantom: SAM 3; Type: Twin Phantom; Serial: TP-1302
- Measurement SW: DASY4, V4.7 Build 71; Postprocessing SW: SEMCAD, V1.8 Build 184

Body - Middle - No Accessory - Flip closed - Back facing phantom – Sony battery/Area Scan (51x101x1):

Measurement grid: dx=15mm, dy=15mm

Maximum value of SAR (interpolated) = 0.346 mW/g

Body - Middle - No Accessory - Flip closed - Back facing phantom – Sony battery/Zoom Scan (5x5x7)/Cube 0:

Measurement grid: dx=7.5mm, dy=7.5mm, dz=5mm

Reference Value = 11.6 V/m

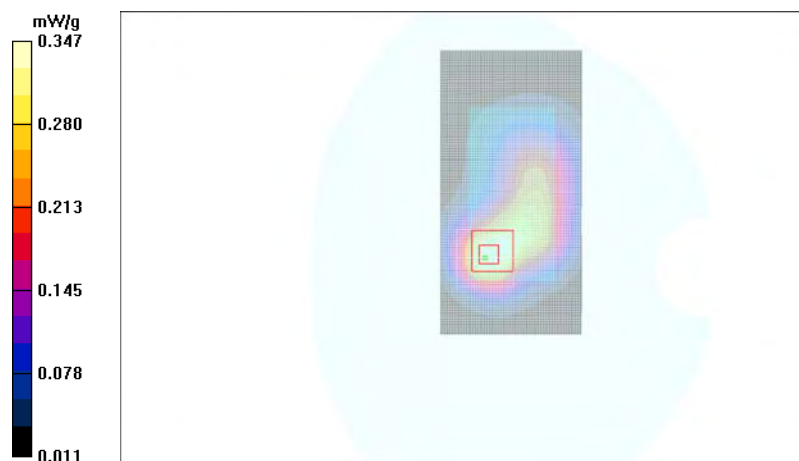
Peak SAR (extrapolated) = 0.549 W/kg

SAR(1 g) = 0.318 mW/g

SAR(10 g) = 0.188 mW/g

Power Drift = 0.010 dB

Maximum value of SAR (measured) = 0.347 mW/g



Date/Time: 2009-06-22 20:27:27

Test Laboratory: TCC Nokia

Type: RM-497; Serial: 004401/10/595985/8

Communication System: GSM 1900

Frequency: 1880 MHz; Duty Cycle: 1:8.3

Medium: Body 1900; Medium Notes: Medium Temperature: 22.0 C

Medium parameters used: $f = 1880$ MHz; $\sigma = 1.46$ mho/m; $\epsilon_r = 52.9$; $\rho = 1000$ kg/m³

Phantom section: Flat Section

DASY4 Configuration:

- Probe: ES3DV3 - SN3116; Probe Notes:
- ConvF(4.55, 4.55, 4.55); Calibrated: 2009-03-16
- Sensor-Surface: 4mm (Mechanical Surface Detection (Locations From Previous Scan Used))Sensor-Surface: 4mm (Mechanical Surface Detection)
- Electronics: DAE3 Sn501; Calibrated: 2009-03-12
- Phantom: SAM 3; Type: Twin Phantom; Serial: TP-1302
- Measurement SW: DASY4, V4.7 Build 71; Postprocessing SW: SEMCAD, V1.8 Build 184

Body - Middle - HS-105 - Flip closed - Back facing phantom – Sony battery/Area Scan (51x101x1): Measurement grid: dx=15mm, dy=15mm

Maximum value of SAR (interpolated) = 0.360 mW/g

Body - Middle - HS-105 - Flip closed - Back facing phantom – Sony battery/Zoom Scan (5x5x7)/Cube 0:

Measurement grid: dx=7.5mm, dy=7.5mm, dz=5mm

Reference Value = 12.0 V/m

Peak SAR (extrapolated) = 0.541 W/kg

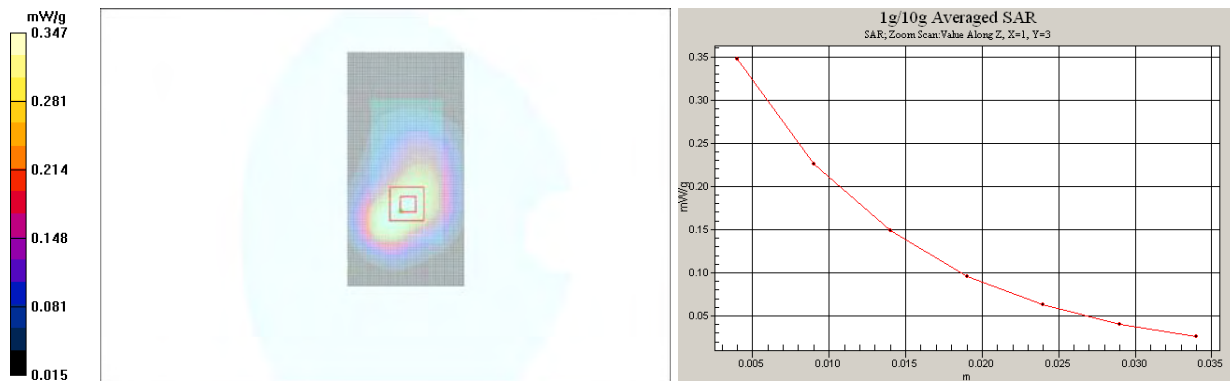
SAR(1 g) = 0.331 mW/g

SAR(10 g) = 0.205 mW/g

Power Drift = 0.027 dB

Warning: Maximum averaged SAR over 10 g is located on the boundary of the measurement cube. This cube might not incorporate the absolute averaged SAR. Please consider a refinement of the Area Scan measurement.

Maximum value of SAR (measured) = 0.347 mW/g



Date/Time: 2009-06-22 21:21:44

Test Laboratory: TCC Nokia

Type: RM-497; Serial: 004401/10/595985/8

Communication System: GSM 1900

Frequency: 1880 MHz; Duty Cycle: 1:8.3

Medium: Body 1900; Medium Notes: Medium Temperature: 22.0 C

Medium parameters used: $f = 1880$ MHz; $\sigma = 1.46$ mho/m; $\epsilon_r = 52.9$; $\rho = 1000$ kg/m³

Phantom section: Flat Section

DASY4 Configuration:

- Probe: ES3DV3 - SN3116; Probe Notes:
- ConvF(4.55, 4.55, 4.55); Calibrated: 2009-03-16
- Sensor-Surface: 4mm (Mechanical Surface Detection (Locations From Previous Scan Used))Sensor-Surface: 4mm (Mechanical Surface Detection)
- Electronics: DAE3 Sn501; Calibrated: 2009-03-12
- Phantom: SAM 3; Type: Twin Phantom; Serial: TP-1302
- Measurement SW: DASY4, V4.7 Build 71; Postprocessing SW: SEMCAD, V1.8 Build 184

Body - Middle - HS-105 - Flip closed - Back facing phantom - Sanyo battery/Area Scan (51x101x1):

Measurement grid: dx=15mm, dy=15mm

Maximum value of SAR (interpolated) = 0.357 mW/g

Body - Middle - HS-105 - Flip closed - Back facing phantom - Sanyo battery/Zoom Scan (5x5x7)/Cube 0:

Measurement grid: dx=7.5mm, dy=7.5mm, dz=5mm

Reference Value = 11.4 V/m

Peak SAR (extrapolated) = 0.559 W/kg

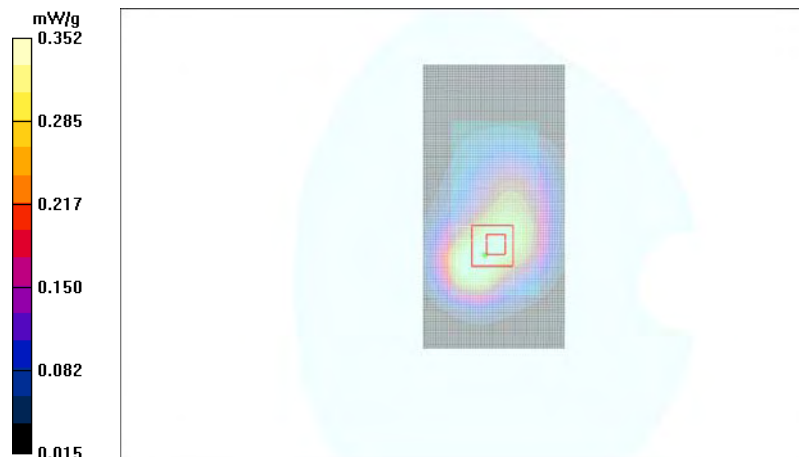
SAR(1 g) = 0.330 mW/g

SAR(10 g) = 0.204 mW/g

Power Drift = 0.042 dB

Warning: Maximum averaged SAR over 10 g is located on the boundary of the measurement cube. This cube might not incorporate the absolute averaged SAR. Please consider a refinement of the Area Scan measurement.

Maximum value of SAR (measured) = 0.352 mW/g



APPENDIX C: RELEVANT PAGES FROM PROBE CALIBRATION REPORT(S)

See the following pages



Accredited by the Swiss Accreditation Service (SAS)
 The Swiss Accreditation Service is one of the signatories to the EA
 Multilateral Agreement for the recognition of calibration certificates

Accreditation No.: **SCS 108**

Client **Nokia Denmark A/S**

Certificate No: **ES3-3116_Mar09**

CALIBRATION CERTIFICATE

Object **ES3DV3 - SN:3116**

Calibration procedure(s) **QA CAL-01.v6 and QA CAL-23.v3
 Calibration procedure for dosimetric E-field probes**

Calibration date: **March 16, 2009**

Condition of the calibrated item **In Tolerance**

This calibration certificate documents the traceability to national standards, which realize the physical units of measurements (SI).
 The measurements and the uncertainties with confidence probability are given on the following pages and are part of the certificate.

All calibrations have been conducted in the closed laboratory facility: environment temperature $(22 \pm 3)^\circ\text{C}$ and humidity $< 70\%$.

Calibration Equipment used (M&TE critical for calibration)

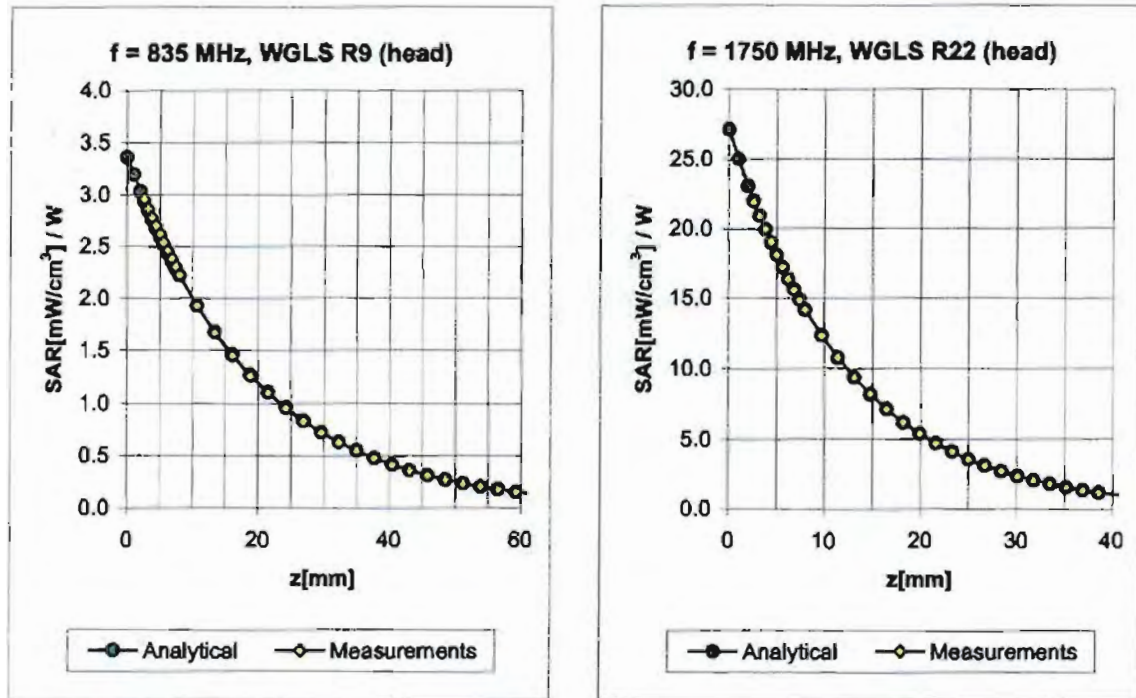
Primary Standards	ID #	Cal Date (Certificate No.)	Scheduled Calibration
Power meter E4419B	GB41293874	1-Apr-08 (No. 217-00788)	Apr-09
Power sensor E4412A	MY41495277	1-Apr-08 (No. 217-00788)	Apr-09
Power sensor E4412A	MY41498087	1-Apr-08 (No. 217-00788)	Apr-09
Reference 3 dB Attenuator	SN: S5054 (3c)	1-Jul-08 (No. 217-00865)	Jul-09
Reference 20 dB Attenuator	SN: S5086 (20b)	31-Mar-08 (No. 217-00787)	Apr-09
Reference 30 dB Attenuator	SN: S5129 (30b)	1-Jul-08 (No. 217-00866)	Jul-09
Reference Probe ES3DV2	SN: 3013	2-Jan-09 (No. ES3-3013_Jan09)	Jan-10
DAE4	SN: 660	9-Sep-08 (No. DAE4-660_Sep08)	Sep-09
Secondary Standards	ID #	Check Date (in house)	Scheduled Check
RF generator HP 8648C	US3642U01700	4-Aug-99 (in house check Oct-07)	In house check: Oct-09
Network Analyzer HP 8753E	US37390585	18-Oct-01 (in house check Oct-08)	In house check: Oct-09

	Name	Function	Signature
Calibrated by:	Katja Pokovic	Technical Manager	
Approved by:	Fin Bomholt	R&D Director	

Issued: March 16, 2009

This calibration certificate shall not be reproduced except in full without written approval of the laboratory.

Conversion Factor Assessment



f [MHz]	Validity [MHz] ^c	TSL	Permittivity	Conductivity	Alpha	Depth	ConvF Uncertainty
835	± 50 / ± 100	Head	41.5 ± 5%	0.90 ± 5%	0.80	1.11	5.90 ± 11.0% (k=2)
1750	± 50 / ± 100	Head	40.1 ± 5%	1.37 ± 5%	0.47	1.50	5.06 ± 11.0% (k=2)
1900	± 50 / ± 100	Head	40.0 ± 5%	1.40 ± 5%	0.43	1.58	4.88 ± 11.0% (k=2)
2450	± 50 / ± 100	Head	39.2 ± 5%	1.80 ± 5%	0.48	1.56	4.43 ± 11.0% (k=2)
835	± 50 / ± 100	Body	55.2 ± 5%	0.97 ± 5%	0.63	1.29	5.79 ± 11.0% (k=2)
1750	± 50 / ± 100	Body	53.4 ± 5%	1.49 ± 5%	0.59	1.29	4.78 ± 11.0% (k=2)
1900	± 50 / ± 100	Body	53.3 ± 5%	1.52 ± 5%	0.83	1.11	4.55 ± 11.0% (k=2)
2450	± 50 / ± 100	Body	52.7 ± 5%	1.95 ± 5%	0.99	0.91	4.04 ± 11.0% (k=2)

^c The validity of ± 100 MHz only applies for DASY v4.4 and higher (see Page 2). The uncertainty is the RSS of the ConvF uncertainty at calibration frequency and the uncertainty for the indicated frequency band.

APPENDIX D: RELEVANT PAGES FROM DIPOLE VALIDATION KIT REPORT(S)

See the following pages



Accredited by the Swiss Accreditation Service (SAS)
 The Swiss Accreditation Service is one of the signatories to the EA
 Multilateral Agreement for the recognition of calibration certificates

Accreditation No.: **SCS 108**

Client **Nokia Denmark A/S**

Certificate No: **D835V2-4d042_Sep08**

CALIBRATION CERTIFICATE

Object **D835V2 - SN: 4d042**

Calibration procedure(s) **QA CAL-05.v7**
Calibration procedure for dipole validation kits

Calibration date: **September 22, 2008**

Condition of the calibrated item **In Tolerance**

This calibration certificate documents the traceability to national standards, which realize the physical units of measurements (SI).
 The measurements and the uncertainties with confidence probability are given on the following pages and are part of the certificate.

All calibrations have been conducted in the closed laboratory facility: environment temperature (22 ± 3)°C and humidity < 70%.

Calibration Equipment used (M&TE critical for calibration)

Primary Standards	ID #	Cal Date (Certificate No.)	Scheduled Calibration
Power meter EPM-442A	GB37480704	04-Oct-07 (No. 217-00736)	Oct-08
Power sensor HP 8481A	US37292783	04-Oct-07 (No. 217-00736)	Oct-08
Reference 20 dB Attenuator	SN: 5086 (20g)	01-Jul-08 (No. 217-00864)	Jul-09
Type-N mismatch combination	SN: 5047.2 / 06327	01-Jul-08 (No. 217-00867)	Jul-09
Reference Probe ES3DV2	SN: 3025	28-Apr-08 (No. ES3-3025_Apr08)	Apr-09
DAE4	SN: 601	14-Mar-08 (No. DAE4-601_Mar08)	Mar-09

Secondary Standards	ID #	Check Date (in house)	Scheduled Check
Power sensor HP 8481A	MY41092317	18-Oct-02 (in house check Oct-07)	In house check: Oct-09
RF generator R&S SMT-06	100005	4-Aug-99 (in house check Oct-07)	In house check: Oct-09
Network Analyzer HP 8753E	US37390585 S4206	18-Oct-01 (in house check Oct-07)	In house check: Oct-08

Calibrated by:	Name Jeton Kasirati	Function Laboratory Technician	Signature
Approved by:	Name Katja Pokovic	Function Technical Manager	Signature

Issued: September 22, 2008

This calibration certificate shall not be reproduced except in full without written approval of the laboratory.

DASY5 Validation Report for Head TSL

Date/Time: 22.09.2008 10:40:16

Test Laboratory: SPEAG, Zurich, Switzerland

DUT: Dipole 835 MHz; Type: D835V2; Serial: D835V2 - SN:4d042

Communication System: CW-835; Frequency: 835 MHz; Duty Cycle: 1:1

Medium: HSL 900 MHz

Medium parameters used: $f = 835 \text{ MHz}$; $\sigma = 0.901 \text{ mho/m}$; $\epsilon_r = 41.4$; $\rho = 1000 \text{ kg/m}^3$

Phantom section: Flat Section

Measurement Standard: DASY5 (IEEE/IEC)

DASY5 Configuration:

- Probe: ES3DV2 - SN3025; ConvF(5.97, 5.97, 5.97); Calibrated: 28.04.2008
- Sensor-Surface: 3.4mm (Mechanical Surface Detection)
- Electronics: DAE4 Sn601; Calibrated: 14.03.2008
- Phantom: Flat Phantom 4.9L; Type: QD000P49AA; Serial: 1001
- Measurement SW: DASY5, V5.0 Build 119; SEMCAD X Version 13.2 Build 87

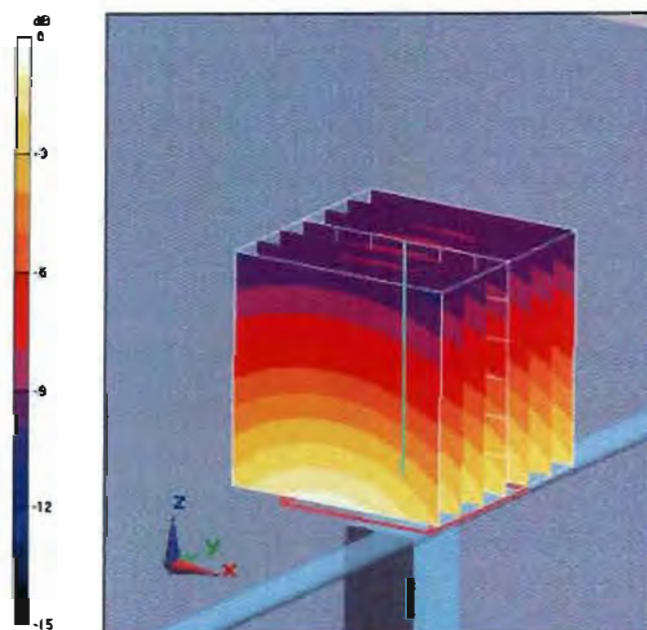
$P_{in}=250\text{mW}$; $dip=15\text{mm}$; $dist=3.4\text{mm}$ /Zoom Scan (7x7x7)/Cube 0: Measurement grid: $dx=5\text{mm}$, $dy=5\text{mm}$, $dz=5\text{mm}$

Reference Value $\approx 55.9 \text{ V/m}$; Power Drift = 0.013 dB

Peak SAR (extrapolated) = 3.48 W/kg

SAR(1 g) = 2.38 mW/g; SAR(10 g) = 1.57 mW/g

Maximum value of SAR (measured) = 2.69 mW/g



0 dB = 2.69mW/g

DASY5 Validation Report for Body TSL

Date/Time: 16.09.2008 10:46:36

Test Laboratory: SPEAG, Zurich, Switzerland

DUT: Dipole 835 MHz; Type: D835V2; Serial: D835V2 - SN:4d042

Communication System: CW; Frequency: 835 MHz; Duty Cycle: 1:1

Medium: MSL900

Medium parameters used: $f = 835 \text{ MHz}$; $\sigma = 1.01 \text{ mho/m}$; $\epsilon_r = 53.3$; $\rho = 1000 \text{ kg/m}^3$

Phantom section: Flat Section

Measurement Standard: DASY5 (IEEE/IEC)

DASY5 Configuration:

- Probe: ES3DV2 - SN3025; ConvF(5.9, 5.9, 5.9); Calibrated: 28.04.2008
- Sensor-Surface: 3.4mm (Mechanical Surface Detection)
- Electronics: DAE4 Sn601; Calibrated: 14.03.2008
- Phantom: Flat Phantom 4.9L; Type: QD000P49AA; Serial: 1001
- Measurement SW: DASY5, V5.0 Build 119; SEMCAD X Version 13.2 Build 87

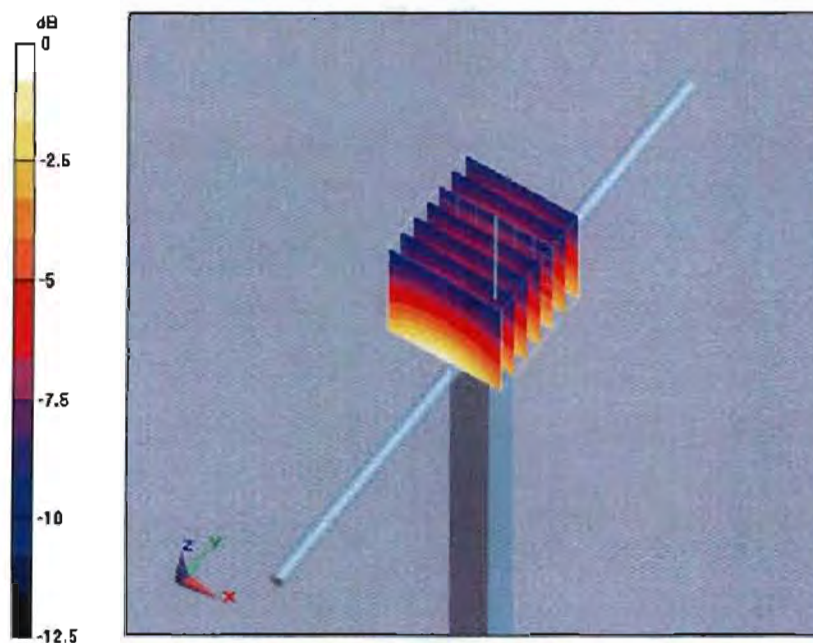
Pin = 250mW, d = 15mm/Zoom Scan (7x7x7)/Cube 0: Measurement grid: dx=5mm, dy=5mm, dz=5mm

Reference Value = 54 V/m; Power Drift = 0.024 dB

Peak SAR (extrapolated) = 3.63 W/kg

SAR(1 g) = 2.51 mW/g; SAR(10 g) = 1.65 mW/g

Maximum value of SAR (measured) = 2.81 mW/g



0 dB = 2.81 mW/g

18307

Calibration Laboratory of
Schmid & Partner
Engineering AG
 Zeughausstrasse 43, 8004 Zurich, Switzerland



S Schweizerischer Kalibrierdienst
C Service suisse d'étalonnage
S Servizio svizzero di taratura
S Swiss Calibration Service

Accredited by the Swiss Federal Office of Metrology and Accreditation
 The Swiss Accreditation Service is one of the signatories to the EA
 Multilateral Agreement for the recognition of calibration certificates

Accreditation No.: **SCS 108**

Client **Nokia Denmark A/S**

Certificate No: **D1900V2-5d026_Mar08**

CALIBRATION CERTIFICATE

Object **D1900V2 - SN: 5d026**

Calibration procedure(s) **QA-CAL-05.v7**
Calibration procedure for dipole validation kits

Calibration date: **March 18, 2008**

Condition of the calibrated item **In Tolerance**

This calibration certificate documents the traceability to national standards, which realize the physical units of measurements (SI).
 The measurements and the uncertainties with confidence probability are given on the following pages and are part of the certificate.

All calibrations have been conducted in the closed laboratory facility: environment temperature $(22 \pm 3)^{\circ}\text{C}$ and humidity $< 70\%$.

Calibration Equipment used (M&TE critical for calibration)

Primary Standards	ID #	Cal Date (Calibrated by, Certificate No.)	Scheduled Calibration
Power meter EPM-442A	GB37480704	04-Oct-07 (METAS, No. 217-00736)	Oct-08
Power sensor HP 8481A	US37292783	04-Oct-07 (METAS, No. 217-00736)	Oct-08
Reference 20 dB Attenuator	SN: 5086 (20g)	07-Aug-07 (METAS, No 217-00718)	Aug-08
Reference 10 dB Attenuator	SN: 5047.2 (10r)	07-Aug-07 (METAS, No 217-00718)	Aug-08
Reference Probe ES3DV2	SN: 3025	01-Mar-08 (SPEAG, No. ES3-3025_Mar08)	Mar-09
DAE4	SN 909	3-Sep-08 (SPEAG, No. DAE4-909_Sep07)	Sep-07
Secondary Standards	ID #	Check Date (in house)	Scheduled Check
Power sensor HP 8481A	MY41092317	18-Oct-02 (SPEAG, in house check Oct-07)	In house check: Oct-08
RF generator R&S SMT-06	100005	4-Aug-99 (SPEAG, in house check Oct-07)	In house check: Oct-09
Network Analyzer HP 8753E	US37390585 S4206	18-Oct-01 (SPEAG, in house check Oct-07)	In house check: Oct-08
Power meter EPM-442A	GB37480704	04-Oct-07 (METAS, No. 217-00736)	Oct-08

	Name	Function	Signature
Calibrated by:	Marcel Fehr	Laboratory Technician	
Approved by:	Katja Pokovic	Technical Manager	

Issued: March 18, 2008

This calibration certificate shall not be reproduced except in full without written approval of the laboratory.

DASY4 Validation Report for Head TSL

Date/Time: 18.03.2008 11:48:54

Test Laboratory: SPEAG, Zurich, Switzerland

DUT: Dipole 1900 MHz; Type: D1900V2; Serial: D1900V2 - SN:5d026

Communication System: CW; Frequency: 1900 MHz; Duty Cycle: 1:1

Medium: HSL U10 BB;

Medium parameters used: $f = 1900$ MHz; $\sigma = 1.47$ mho/m; $\epsilon_r = 40.2$; $\rho = 1000$ kg/m³

Phantom section: Flat Section

Measurement Standard: DASY4 (High Precision Assessment)

DASY4 Configuration:

- Probe: ES3DV2 - SN3025; ConvF(4.9, 4.9, 4.9); Calibrated: 01.03.2008
- Sensor-Surface: 3.4mm (Mechanical Surface Detection)
- Electronics: DAE4 Sn909; Calibrated: 03.09.2007
- Phantom: Flat Phantom 5.0 (front); Type: QD000P50AA; ;
- Measurement SW: DASY4, V4.7 Build 55; Postprocessing SW: SEMCAD, V1.8 Build 172

Pin = 250 mW; d = 10 mm/Zoom Scan (7x7x7)/Cube 0:

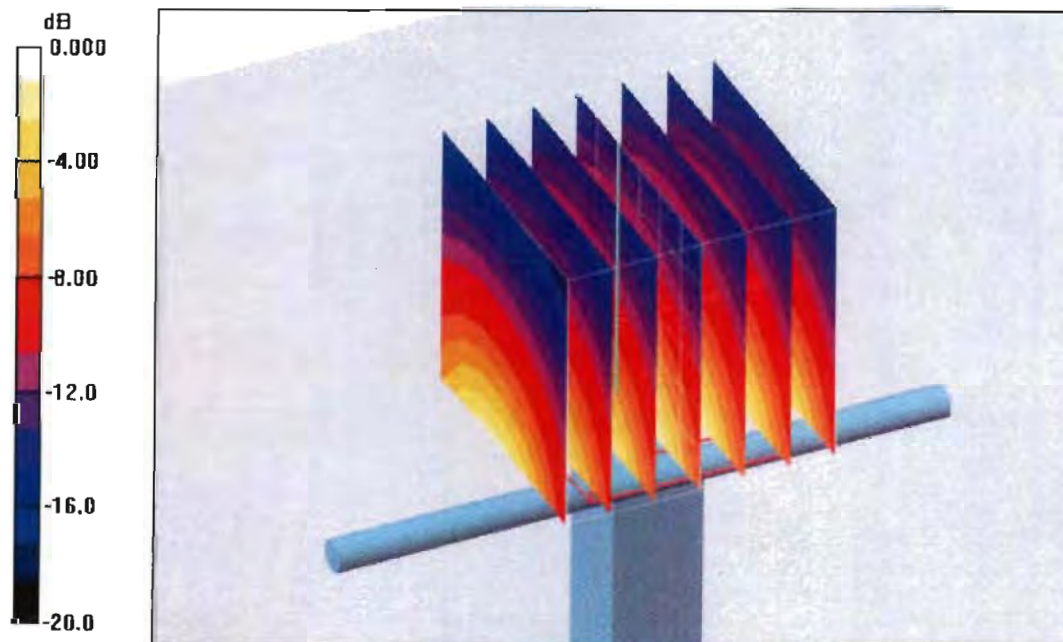
Measurement grid: dx=5mm, dy=5mm, dz=5mm

Reference Value = 90.7 V/m; Power Drift = 0.071 dB

Peak SAR (extrapolated) = 19.3 W/kg

SAR(1 g) = 10.3 mW/g; SAR(10 g) = 5.27 mW/g

Maximum value of SAR (measured) = 12.0 mW/g



0 dB = 12.0mW/g

DASY4 Validation Report for Body TSL

Date/Time: 14.03.2008 12:53:13

Test Laboratory: SPEAG, Zurich, Switzerland

DUT: Dipole 1900 MHz; Type: D1900V2; Serial: D1900V2 - SN:5d026

Communication System: CW; Frequency: 1900 MHz; Duty Cycle: 1:1

Medium: MSL U10 BB;

Medium parameters used: $f = 1900$ MHz; $\sigma = 1.57$ mho/m; $\epsilon_r = 51.7$; $\rho = 1000$ kg/m³

Phantom section: Flat Section

Measurement Standard: DASY4 (High Precision Assessment)

DASY4 Configuration:

- Probe: ES3DV2 - SN3025; ConvF(4.5, 4.5, 4.5); Calibrated: 01.03.2008
- Sensor-Surface: 3.4mm (Mechanical Surface Detection)
- Electronics: DAE4 Sn909; Calibrated: 03.09.2007
- Phantom: Flat Phantom 5.0 (front); Type: QD000P50AA; ;
- Measurement SW: DASY4, V4.7 Build 55; Postprocessing SW: SEMCAD, V1.8 Build 172

Pin = 250 mW; d = 10 mm/Zoom Scan (7x7x7)/Cube 0:

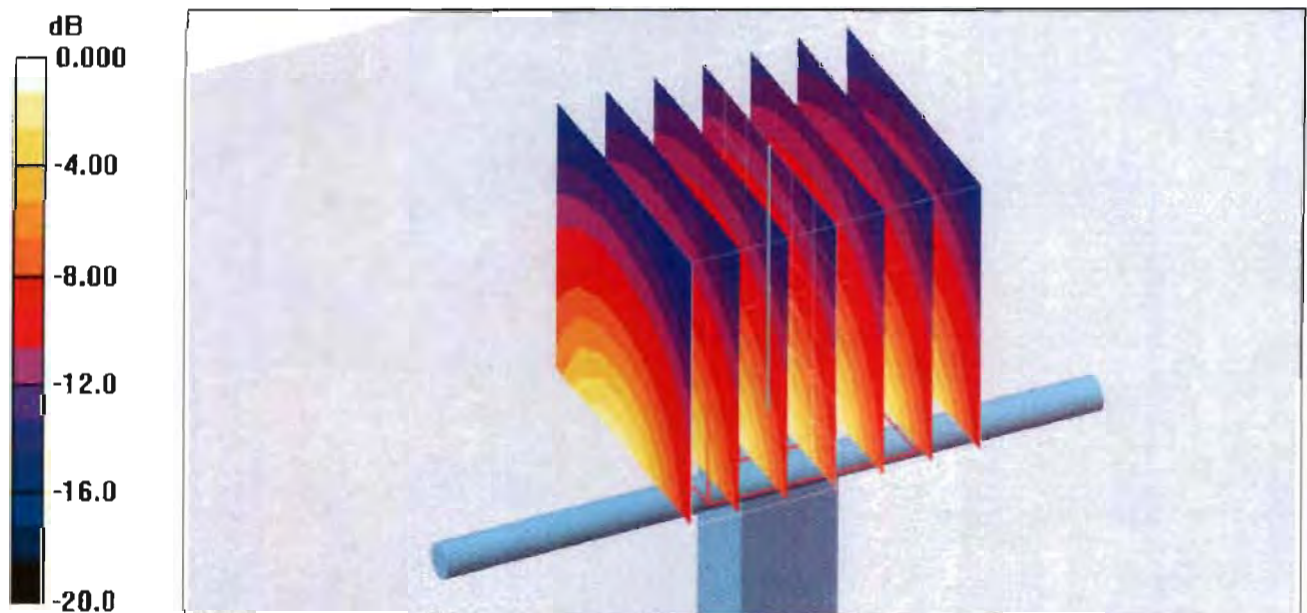
Measurement grid: dx=5mm, dy=5mm, dz=5mm

Reference Value = 89.8 V/m; Power Drift = 0.050 dB

Peak SAR (extrapolated) = 18.7 W/kg

SAR(1 g) = 10.5 mW/g; SAR(10 g) = 5.5 mW/g

Maximum value of SAR (measured) = 12.1 mW/g



0 dB = 12.1mW/g