

ON

PR APPD 262 TC

NYLON COATED

9

8

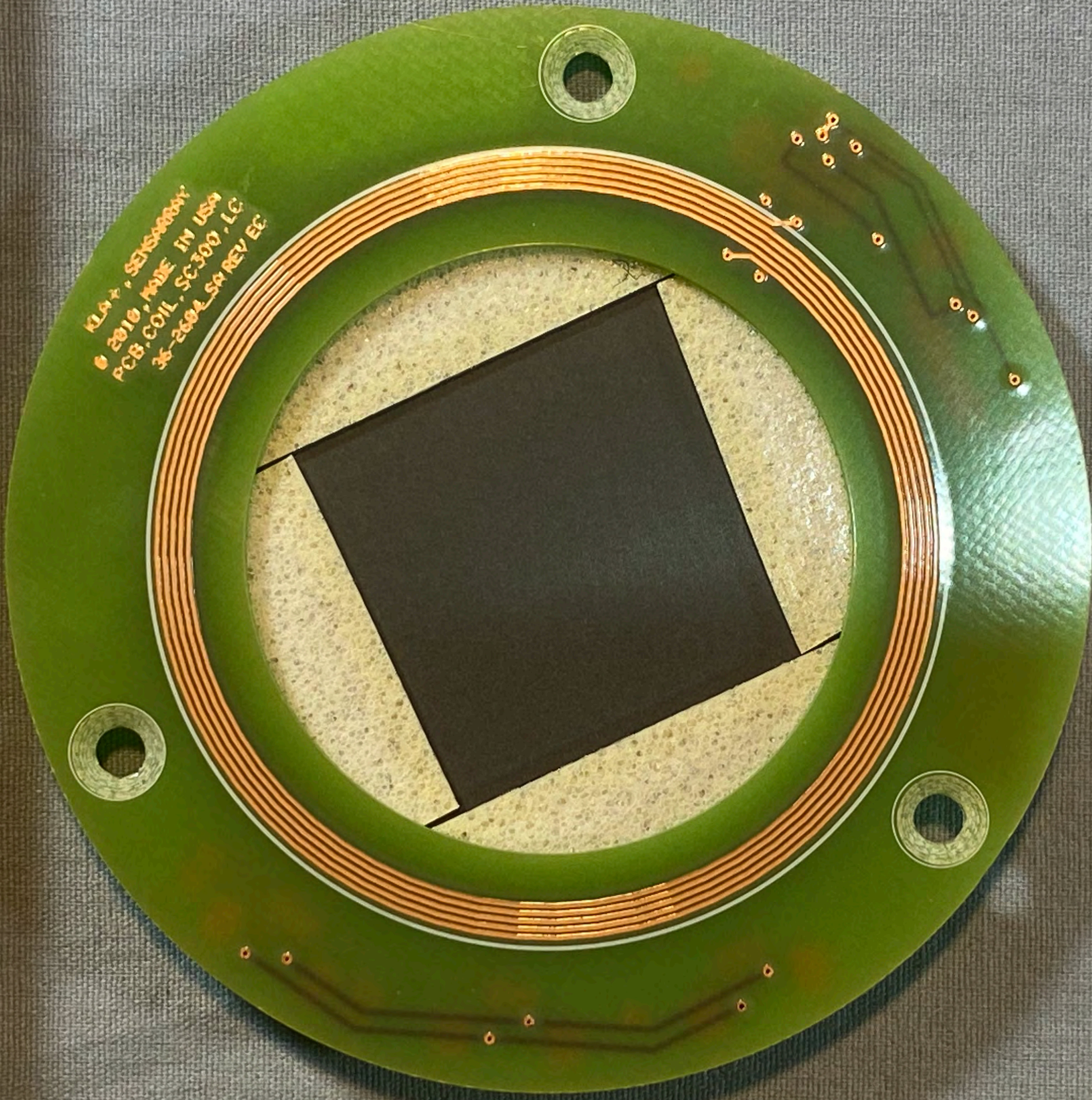
7

6

17361422

17 18 19 20 21 22 23 24 25

90 89 88 87 86 85 84 83 82 81 80

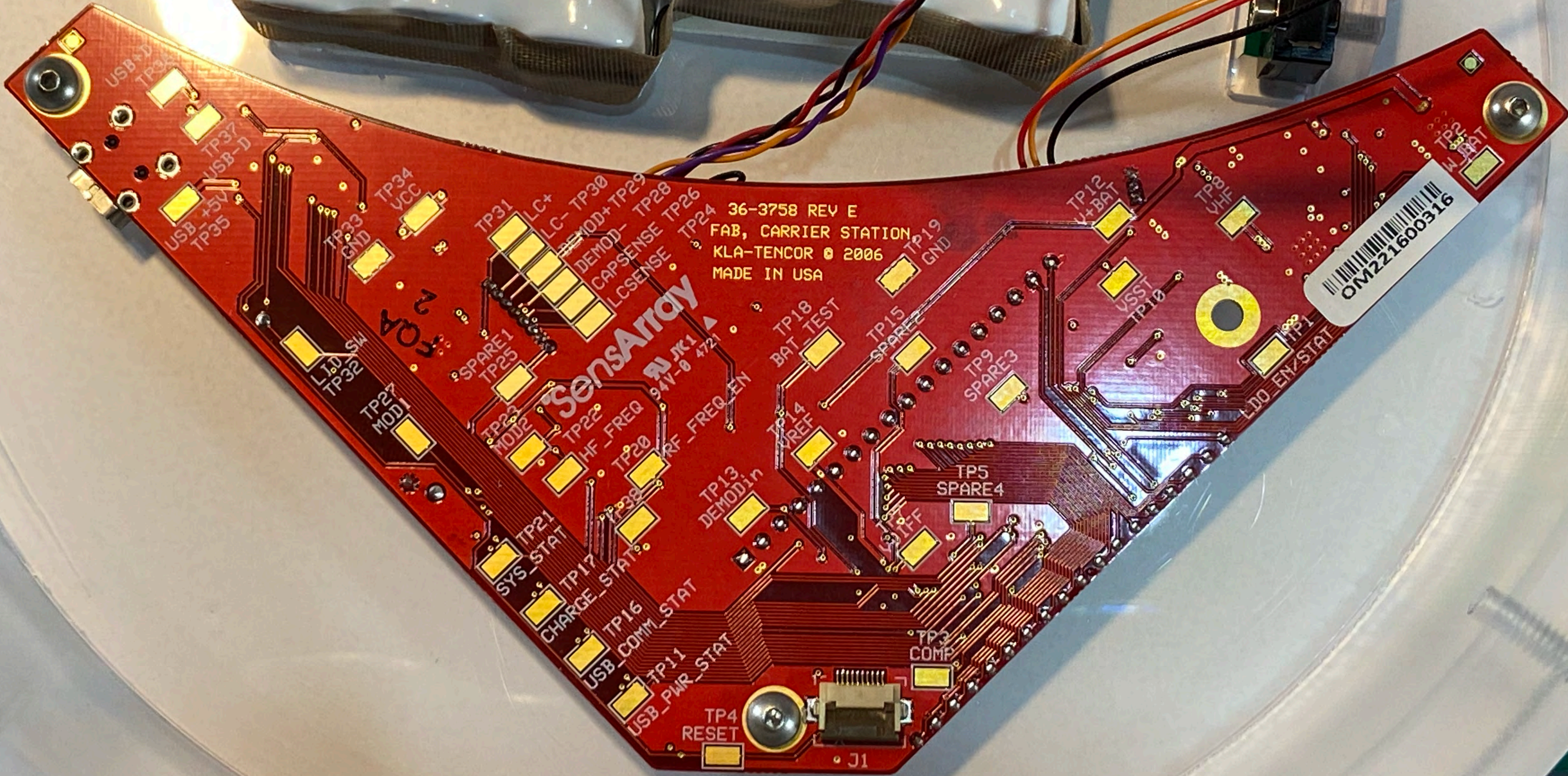


KLA+ SENSORS  
© 2010, MADE IN USA  
PCB COIL, SC300, LC  
36-2682 SA REV EC

N107-F031-ND  
ALKALINE 4.5V AA  
#71141120  
GIKEY 800-344-4539  
ESTED: 04-05-2022

N107-F031-ND  
ALKALINE 4.5V AA  
#71141120  
GIKEY 800-344-4539  
TESTED: 04-05-2022

ALKALINE 4.5V AA #71141120  
DIGIKEY 800-344-4539  
TESTED: 04-05-2022



36-3758 REV E  
FAB, CARRIER STATION  
KLA-TENCOR © 2006  
MADE IN USA

SensArray

OM221600316

USB-D  
TP37  
USB-D  
TP35

FOA 2

TP4  
RESET

J1

TP3  
COMP

TP16  
USB\_COMM\_STAT

TP17  
CHARGE\_STAT

TP21  
SYS\_STAT

TP20  
RF\_FREQ

TP22  
HF\_FREQ

TP23  
MODJ2

TP27  
MODJ1

TP32  
LID SW

TP34  
VCC

TP31  
LC+

TP30  
MOD+

TP29  
CAPSENSE

TP28  
LCSENSE

TP24  
RF\_FREQ\_EN

TP18  
BAT\_TEST

TP15  
SPARE1

TP14  
VREF

TP13  
DEMOD1in

TP9  
SPARE3

TP5  
SPARE4

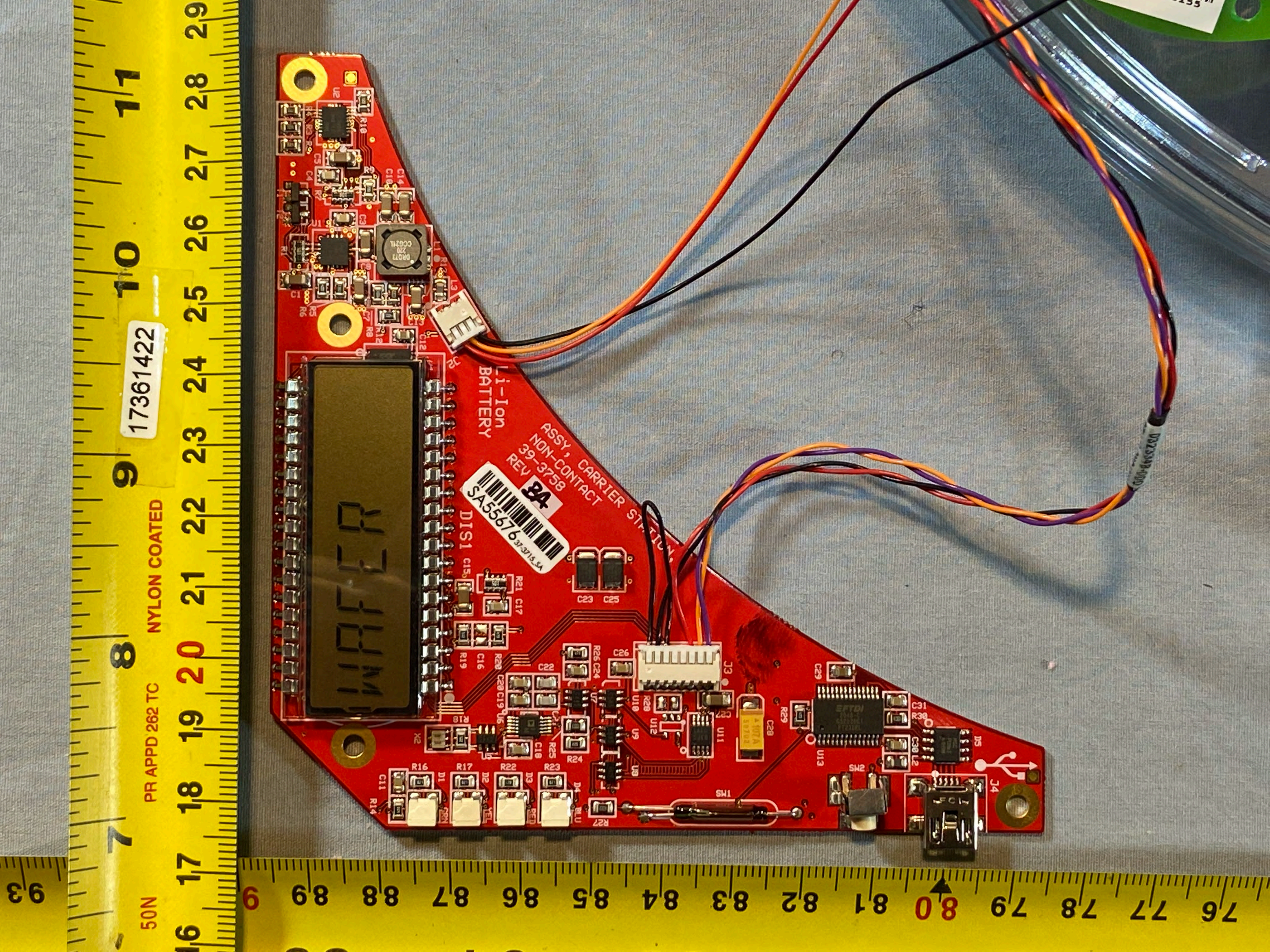
TP12  
V+BAT

TP10  
VSST

TP11  
LDD\_ENZSTAT

TP2  
V+BAT

TP1  
LDD\_ENZSTAT



50N

PR APPD 262 TC

NYLON COATED

17361422

16 17 18 19 20 21 22 23 24 25 26 27 28 29

7 8 9 10 11

93 89 88 87 86 85 84 83 82 81 80 79 78 77 76

Li-Ion BATTERY

ASSY, CARRIER STATION  
NON-CONTACT  
REV 39-3758

SA55676-37-3715-34

DIS1 C15

WFFER

J3

J4

U10 U9 U8 U7 U6 U5 U4 U3 U2 U1

R21 C17 R20 C16 R19 C15 R18 C14 R17 C13 R16 C12 R15 C11 R14 C10 R13 C9 R12 C8 R11 C7 R10 C6 R9 C5 R8 C4 R7 C3 R6 C2 R5 C1

C23 C25 C22 C21 C20 C19 C18 C17 C16 C15 C14 C13 C12 C11 C10 C9 C8 C7 C6 C5 C4 C3 C2 C1

SM2

SM1

U13

U12

U11

U10

U9

U8

U7

U6

U5

U4

U3

U2

U1

R26 C24 R25 C23 R24 C22 R23 C21 R22 C20 R21 C19 R20 C18 R19 C17 R18 C16 R17 C15 R16 C14 R15 C13 R14 C12 R13 C11 R12 C10 R11 C9 R10 C8 R9 C7 R8 C6 R7 C5 R6 C4 R5 C3 R4 C2 R3 C1

C29

C28

C27

C26

C25

C24

C23

C22

C21

C20

C19

C18

C17

C16

C15

C14

C13

C12

C11

C10

C9

C8

C7

C6

C5

C4

C3

C2

C1

SM2

SM1

U13

U12

U11

U10

U9

U8

U7

U6

U5

U4

U3

U2

U1

R26 C24 R25 C23 R24 C22 R23 C21 R22 C20 R21 C19 R20 C18 R19 C17 R18 C16 R17 C15 R16 C14 R15 C13 R14 C12 R13 C11 R12 C10 R11 C9 R10 C8 R9 C7 R8 C6 R7 C5 R6 C4 R5 C3 R4 C2 R3 C1

C29

C28

C27

C26

C25

C24

C23

C22

C21

C20

C19

C18

C17

C16

C15

C14

C13

C12

C11

C10

C9

C8

C7

C6

C5

C4

C3

C2

C1

SM2

SM1

U13

U12

U11

U10

U9

U8

U7

U6

U5

U4

U3

U2

U1