



BLACKWEB FAST DUAL WIRELESS CHARGING PAD

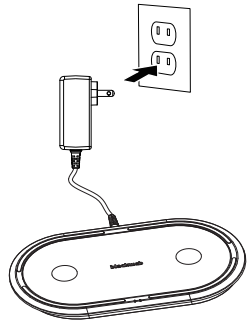
Model: BWB18WI703

## PRODUCT GUIDE

Ver.00 Rev.06/26/18

### How to Charge Your Devices:

#### 1. Stand by status



The actual operating condition of device will be displayed by the status LED. The LED will turn green when the charge procedure starts. If the green LED is switched off, the charge procedure is concluded. If the LED is red, there is no Qi-compatible terminal to be charged on the inductive charge station and is standby status. If the LED flashes red, there is an error, for example because the device has become warm, a foreign body is between the devices or a non-compatible adapter is used.

#### 2. Charging status

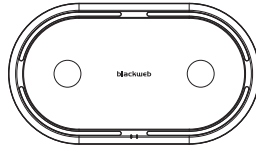
### Welcome Guide

#### Blackweb Fast Dual Wireless Charging Pad

##### Contents:

Before getting started, ensure the package contains the following components:

Wireless Charger



Adapter fixed 3ft cable



### Specifications

#### • Wireless Charger Pad

Model	BWB18WI703
Input	12V/3A
Wireless Output1	5W, Apple 7.5W, Samsung 10W
Wireless Output2	5W, Apple 7.5W, Samsung 10W
Dimensions (L x W x D)	7.72 x 4.33 x 0.56 in. (196x110x14.2mm)
Weight	7.76 oz (220g)
Working temperature	32~78.8 °F (0~26 °C)
Qi-version:	Version 1.2
Status display:	LED lamp, see LEDs
Protection: Foreign body detection:	Temperature protection, short circuit protection, Over Current protection, Over Output Power Protection, FOD, Stray Metal Parts Detection
Cover-friendly:	Yes (depending from cover material and thickness. Maximum 5mm and no metal.)

#### • Adaptor

Model	WA-36A12FU
Input	100~240V~50-60Hz 09A Max
Output	12V/3A
Dimensions (L x W x D)	2.99 x 1.97 x 2.19 in. (76x50x55.6mm) cable fixed on adapter, L=36 in. (914.4mm)
FOD or abnormal occurrence	the red LED blinks
Weight	5.04 oz (143g)

#### LED Indicator/Status

Status	Your device:
Starting up devices	the LED green is on and retention time 1s, then turns off
Standby	the red LED is on
Charging	the green LED is on
Your Qi-compatible device is fully charged	All LEDs are off
<b>FOD or abnormal occurrence</b>	<b>the red LED blinks</b>

the wireless charge. In case, you must change position.

#### Step 3: Complete charge procedure

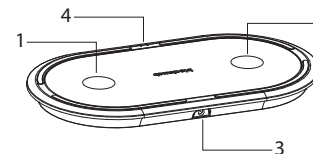
To complete the charge procedure, simply remove your device from the inductive charge station.

#### Exclusion of liability

Changes to the firmware and / or hardware can be made at any time without prior notification. For this reason it is possible that parts of the manual, technical data and images in this documentation may deviate slightly from the product in your hand. All products described in this manual are only for the purpose of clarification and must Operation not necessarily match any certain situation. No claims can be made based on this manual.

#### Compatibility

- Your device has 2 output ends.
  - Wireless Output1: 5W, Apple 7.5W, Samsung 10W
  - Wireless Output2: 5W, Apple 7.5W, Samsung 10W



1. Wireless Output end1
2. Wireless Output end2
3. DC jack input Port
4. LEDs

#### Step 1: Preparation

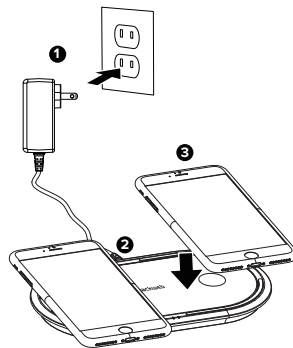
Connect the supplied DC jack cable fixed adapter with the DC jack connection (IN) of the inductive charge station. Then connect the adapter with a socket (by complying with the safety instructions mentioned above).

#### Step 2: Start charge procedure

Position your Qi-compatible device in the middle on the inductive charge station. The charge procedure starts automatically and the status LED turns green.

If this is not the case, please check (if):

- There is a foreign body between the devices.
- You have selected a compatible adapter.
- Your device is Qi-compatible.
- The cable ends and the adapter are connected correctly.
- Where there is the correct position on your device for



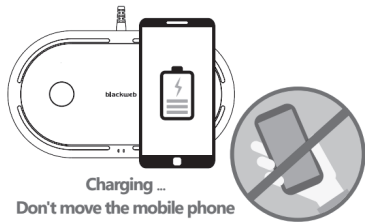
#### Note:

To charge your device we recommend that you use the original adapter with cable that came with your device or the charging cable of your device (included). Using other cables may significantly reduce the supply speed (or prevent the supply altogether). To stop the charging process, disconnect the cable from your device. The product output power is just what your product is able to deliver, but the actual charging power depends on your devices. Your charger adapter is very matter to your device input power as well.

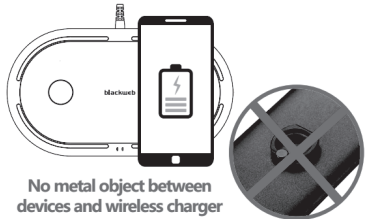
- If this equipment does cause harmful interference to radio or television reception, which can be determined by turning the equipment off and on, the user is encouraged to try to correct the interference by one or more of the following measures:
- Reorient or relocate the receiving antenna
  - Increase the separation between the equipment and receiver.
  - Connect the equipment into an outlet on a circuit different from that to which the receiver is connected.
  - Consult the dealer or an experienced technician for help.

## Caution

Charging status: Don't move your phone



No metal object between devices and wireless charger



## Safety and Compliance

Read all the instructions before using the product.

- To reduce the risk of injury, close supervision is necessary when the product is used near children.
- Don't put finger or hand into product.
- Do not expose device to rain or snow.
- Use of an adapter not recommended or sold by power pack manufacturer may result in a risk of fire or injury to persons.
- Do not use the device in excess of its output rating. Overload outputs above rating may result in a risk of fire or injury to persons.
- Do not use the device that is damaged or modified. Damaged or modified batteries may exhibit unpredictable behavior resulting in fire, explosion or risk of injury.
- Do not disassemble the device. Take it to a qualified service person when service or repair is required. Incorrect reassembly may result in a risk of fire or injury to persons.
- Do not expose or store the device and include adapter in high-temperature environment, including heat caused by intense sunlight or other forms of heat.
- Do not place device in fire or other excessively hot environments.
- Do not store or transport the device with metal objects. Clean only with dry cloth, avoid cleaning the device with rough, wet or chemical objects.

- The device is not a toy. Keep it out of the reach of children and pets.
- Protect the device from extreme temperatures, direct sunlight, strong jolts, flammable gases, vapors and solvents.
- Protect the device against high humidity and wet conditions.
- Prevent the device from undergoing any mechanical stress.
- If it is no longer possible to operate the device safely, stop using it and prevent further or accidental use.
- Safe operation can no longer be guaranteed if the product:
  - is visibly damaged,
  - is no longer working properly,
  - has been stored for extended periods in poor conditions,
  - has been subjected to any serious transport-related stress.
- Please handle the product carefully. Jolts and impacts can damage the product.
- Also observe the safety and operating instructions of any other devices connected to the product.
- Never use the device immediately after it has been brought from a cold room into a warm one. Condensation could destroy the device.
- Allow the device to warm up to room temperature before connecting and using it. This may take a few hours.

can damage the product.

- Also observe the safety and operating instructions of any other devices connected to the product.
- Never use the product immediately after it has been brought from a cold room into a warm one. Condensation could destroy the product.
- Allow the device to warm up to room temperature before connecting and using it. This may take a few hours.
- Never leave the product unattended during use.
- Make sure not to squeeze, bend or in any way damage the adapter fixed cable.
- If this device is intended by Purchaser to be used by a minor, purchasing adult agrees to provide detailed instructions and warnings to any minor prior to use.
- Failure to do so is sole responsibility of purchaser, who agrees to indemnify Manufacturer for any unintended use/misuse by a minor.
- If you find that our device is excessively hot, is emitting odor, is deformed, abraded, cut or is experiencing or demonstrating an abnormal phenomenon, immediately stop all product use and contact Manufacturer.
- To comply with FCC RF exposure compliance requirements, the wireless charging base must be used with a separation distance of at least 10cm from all persons.
- Do not disassemble the device into its parts and do not try to change or repair it by yourself. It does not contain

serviceable parts and in this case the guarantee expires.

- Do not insert objects intended for use into the product opening. There is short circuit danger.
- Do not operate the device with wet hands.
- Please do not use water or chemical substances to clean the device. Please only use a dry cloth.
- It is normal that during the use the device produces heat.
- Do not cover the product during use.
- Do not use the device if it has visible damages or has become wet.
- If you have a pacemaker or another technical implant, consult your physician or the constructor of the implant, before you use the inductive charge station.
- The socket must be next to the device and easily accessible.
- When you position the device, pay attention that nobody steps on the cable or trips over it. Do not put objects on the cable.
- Do not open the adapter box. With the open box there may be a danger of life threatening electric shock. It does not contain serviceable parts.
- Operate the adapter only on earthed sockets with AC 100-240V~, 50/60 Hz. If the power supply is not safe at the installation site, ask the competent power supplier. To interrupt the power supply of your device, disconnect the power supply from the power socket. When disconnecting, always hold the adapter. Never pull the cable.

## SAVE THESE INSTRUCTIONS

### FCC Information

This device complies with Part 15 of the FCC Rules. Operation of this product is subject to the following two conditions: (1) this device may not cause harmful interference, and (2) this device must accept any interference received, including interference that may cause undesired operation.

**Warning: Changes or modifications not expressly approved by the party responsible for compliance with the FCC Rules could void the user's authority to operate the equipment.**

NOTE: This equipment has been tested and found to comply with the limits for a class B digital device, pursuant to Part 15 of the FCC Rules. These limits are designed to provide reasonable protection against harmful interference in a residential installation. This equipment generates, uses and can radiate radio frequency energy and, if not installed and used in accordance with the instructions, may cause harmful interference to radio communications. However, there is no guarantee that interference will not occur in a particular installation. If this equipment does cause harmful interference to radio or television reception,

**which can be determined by turning the equipment off and on, the user is encouraged to try to correct the interference by one or more of the following measures:**

- **Reorient or relocate the receiving antenna.**
- Increase the separation between the equipment and receiver.
- Connect the equipment into an outlet on a circuit different from that to which the receiver is connected.
- Consult the dealer or an experienced technician for help. Shielded cables must be used with this unit to ensure compliance with the Class B FCC limits

### Disposal



- Electronic devices are recyclable waste and must not be disposed of in the household waste.
- At the end of its service life, dispose of the product according to the relevant statutory regulations. The built-in rechargeable battery must be disposed of by a specialist.



Wal-Mart Stores, Inc., Bentonville, AR 72716  
Hotline: 1-800-925-6278

MADE IN CHINA