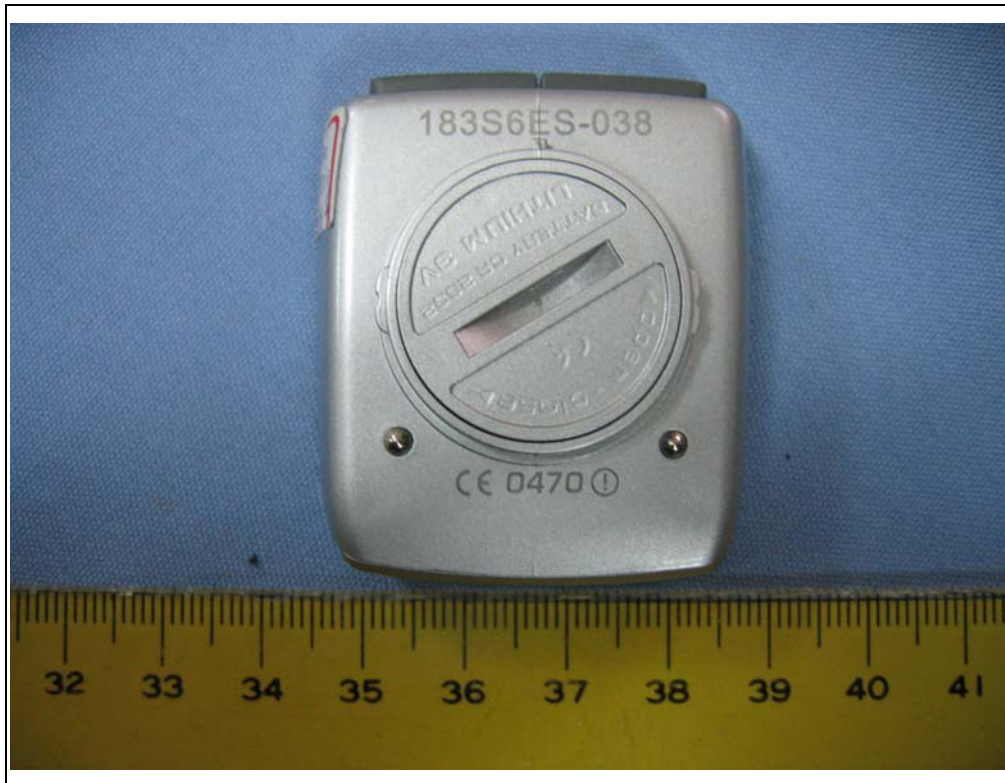




Spectrum Research & Testing Lab., Inc.
No. 101-10, Ling 8, Shan-Tong Li,
Chung-Li City, Taoyuan,
Taiwan, R.O.C.

Photo Page: 6 of 17

PART II : RECEIVER PART
PHOTOS OF EUT-BC 1106 DTS





PHOTOS OF EUT- BC 1106 DTS-CASE





Spectrum Research & Testing Lab., Inc.
No. 101-10, Ling 8, Shan-Tong Li,
Chung-Li City, Taoyuan,
Taiwan, R.O.C.

Photo Page: 8 of 17

PHOTOS OF EUT- BC 1106 DTS-Monitor

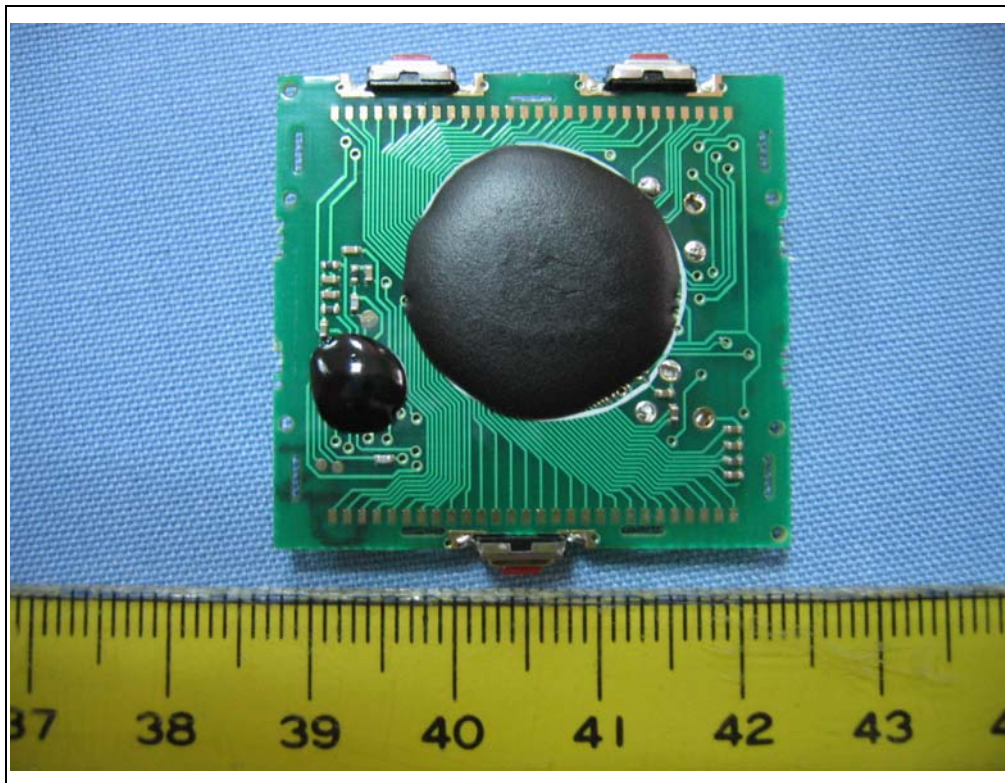
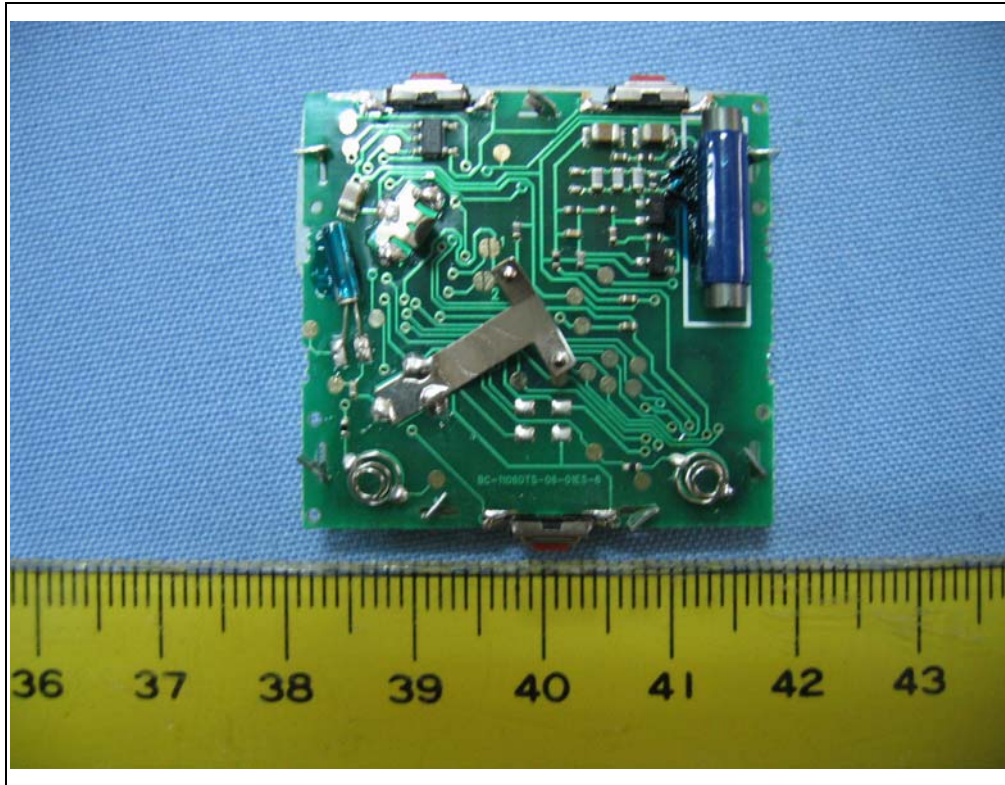




Spectrum Research & Testing Lab., Inc.
No. 101-10, Ling 8, Shan-Tong Li,
Chung-Li City, Taoyuan,
Taiwan, R.O.C.

Photo Page: 9 of 17

PHOTOS OF EUT - BC 1106 DTS -PCB





Spectrum Research & Testing Lab., Inc.
No. 101-10, Ling 8, Shan-Tong Li,
Chung-Li City, Taoyuan,
Taiwan, R.O.C.

Photo Page: 10 of 17

PHOTOS OF EUT – BC 1706 HR DTS





Spectrum Research & Testing Lab., Inc.
No. 101-10, Ling 8, Shan-Tong Li,
Chung-Li City, Taoyuan,
Taiwan, R.O.C.

Photo Page: 11 of 17

PHOTOS OF EUT- BC 1706 HR DTS -CASE

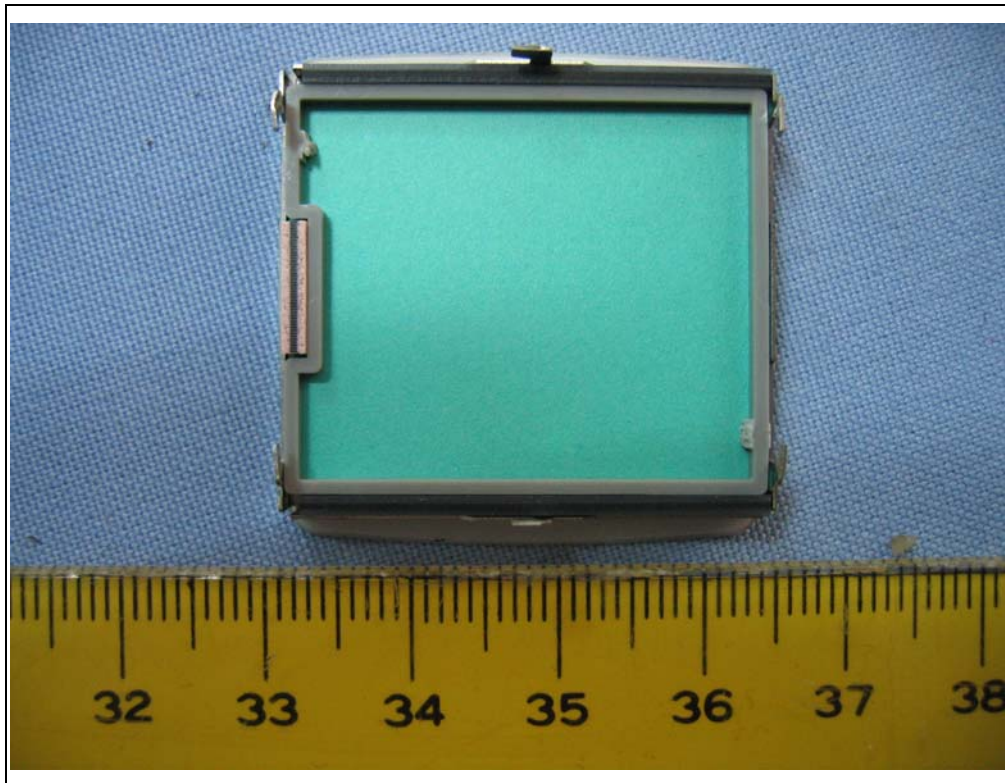




Spectrum Research & Testing Lab., Inc.
No. 101-10, Ling 8, Shan-Tong Li,
Chung-Li City, Taoyuan,
Taiwan, R.O.C.

Photo Page: 12 of 17

PHOTOS OF EUT- BC 1706 HR DTS -Monitor

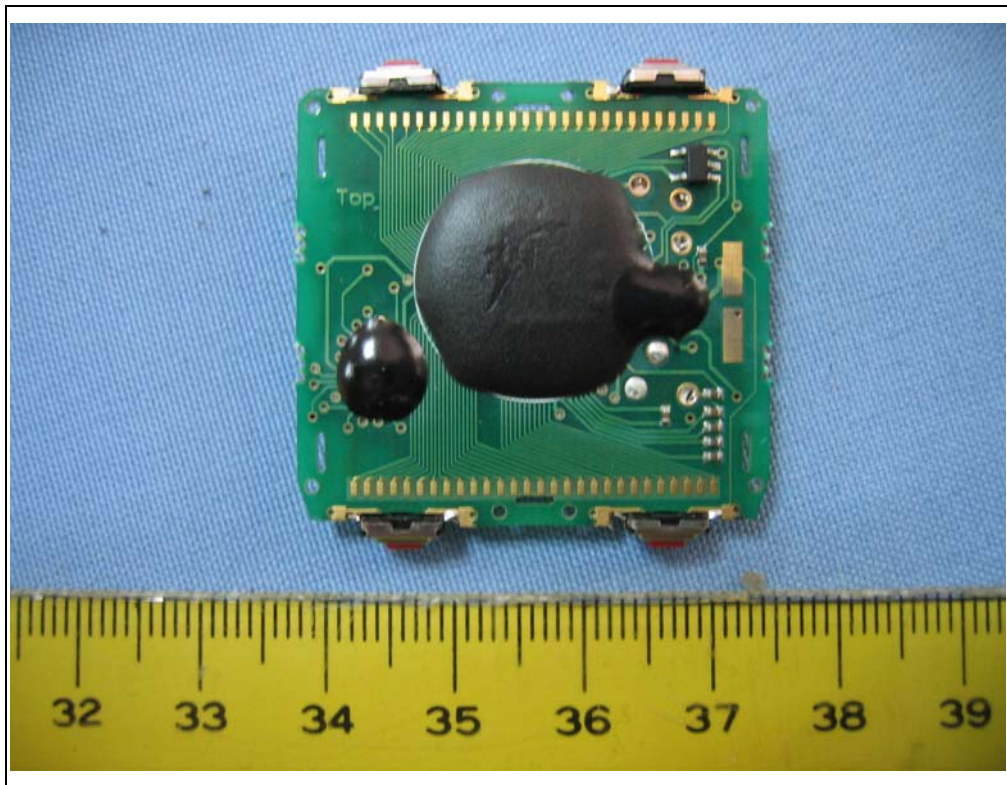
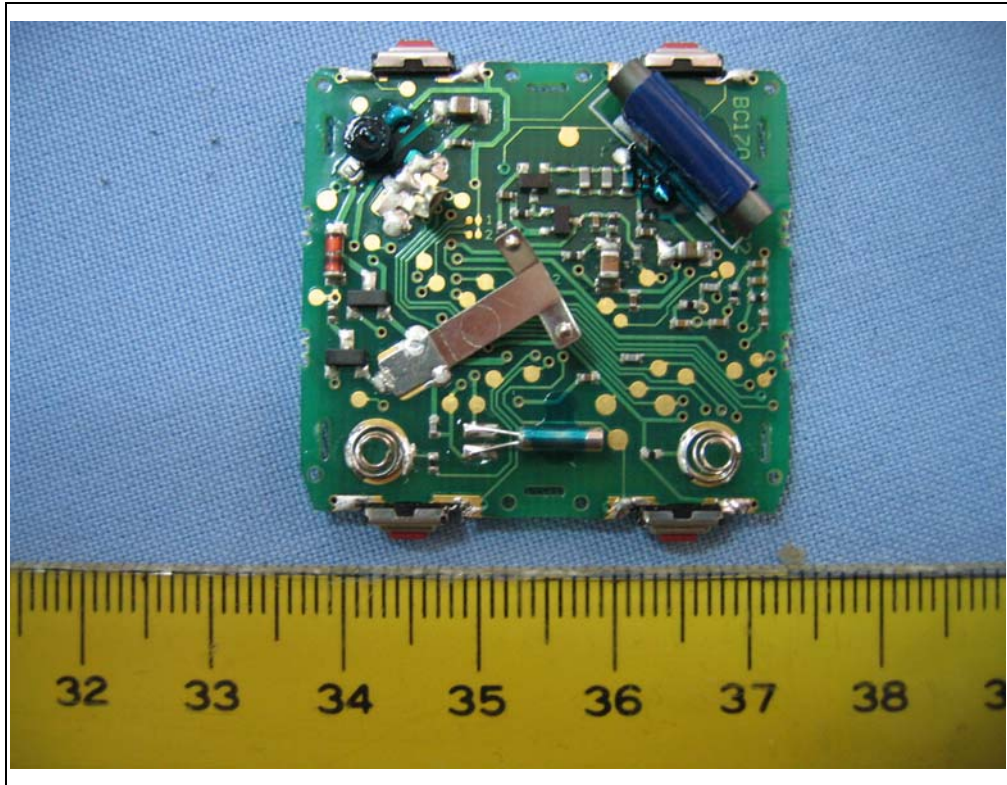




Spectrum Research & Testing Lab., Inc.
No. 101-10, Ling 8, Shan-Tong Li,
Chung-Li City, Taoyuan,
Taiwan, R.O.C.

Photo Page: 13 of 17

PHOTOS OF EUT- BC 1706 HR DTS-PCB





Spectrum Research & Testing Lab., Inc.
No. 101-10, Ling 8, Shan-Tong Li,
Chung-Li City, Taoyuan,
Taiwan, R.O.C.

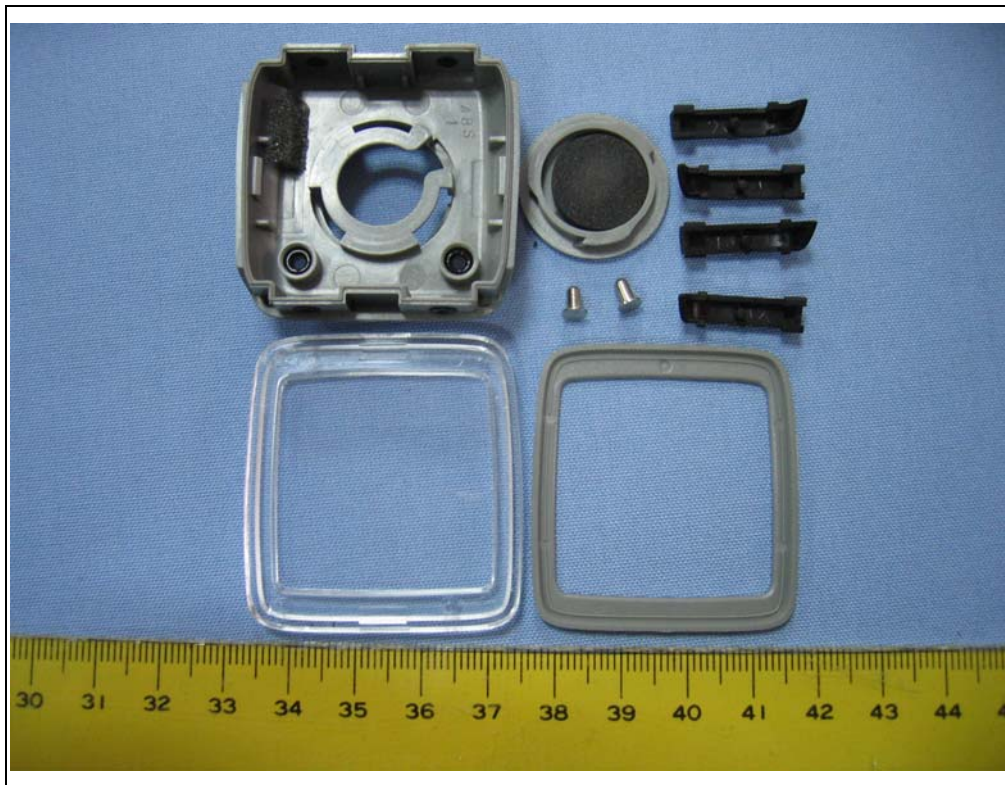
Photo Page: 14 of 17

PHOTOS OF EUT- BC 1606L DTS





PHOTOS OF EUT- BC 1606L DTS - CASE-

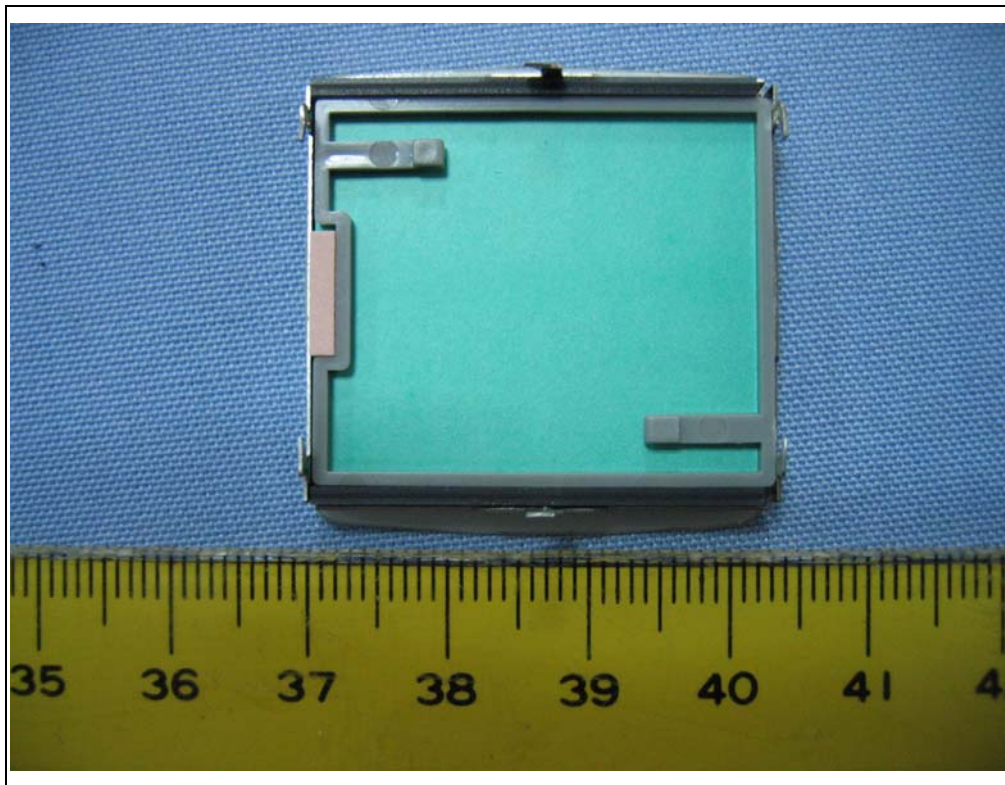




Spectrum Research & Testing Lab., Inc.
No. 101-10, Ling 8, Shan-Tong Li,
Chung-Li City, Taoyuan,
Taiwan, R.O.C.

Photo Page: 16 of 17

PHOTOS OF EUT- BC 1606L DTS -Monitor





Spectrum Research & Testing Lab., Inc.
No. 101-10, Ling 8, Shan-Tong Li,
Chung-Li City, Taoyuan,
Taiwan, R.O.C.

Photo Page: 17 of 17

PHOTOS OF EUT- BC 1606L DTS -PCB

