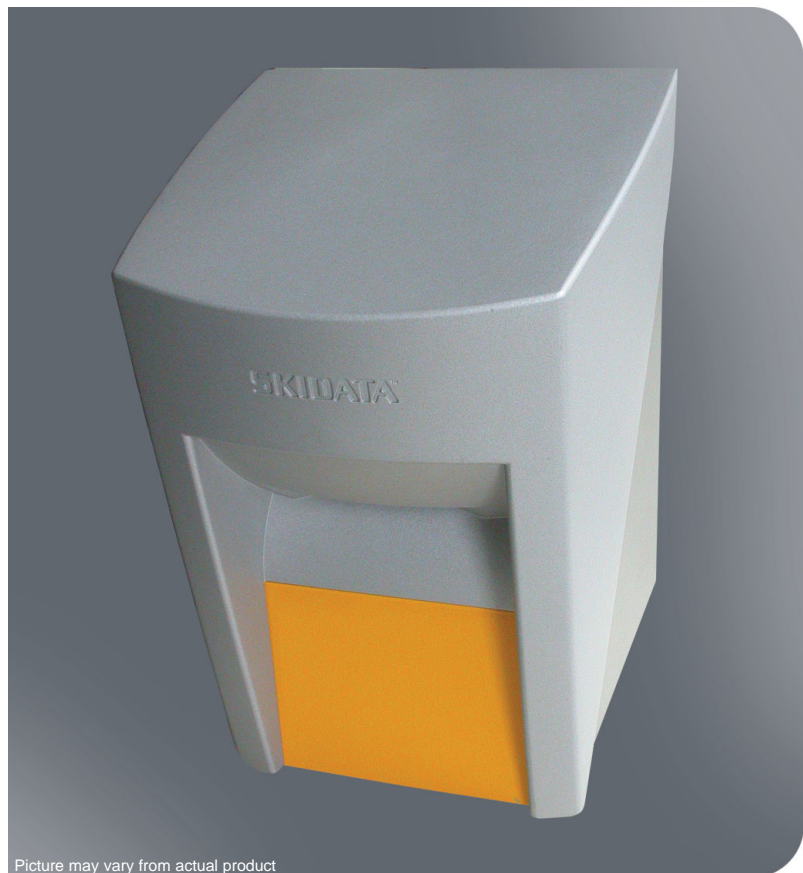


The MC BASIC 400 is designed for issuing receipts and labeling barcode tickets by thermal direct printing. Contactless data carriers (keycards) are processed by way of a built-in contactless antenna. Fanfold ticket stock is drawn in automatically through a supply slot at the rear for printing. The issuing speed per ticket is approx. 2 seconds. Tickets are read through a front-mounted insert slot.



Picture may vary from actual product

Features

- Insert-type ticket reader and barcode scanner for reading barcode-based data carriers in one orientation
- Integrated thermal ticket and/or receipt printer
- Tickets, receipts and invoices are printed on fanfold stock by thermal direct printing
- Automated feed and cutter for fanfold stock
- Transport mechanism for withdrawal of invalid or invalidated tickets
- 2 barcode scanners for reading barcode scanners in any of two orientations
- Contactless scanner for reading contactless 125-kHz and 13 MHz keycards; integrated in front panel of device such as the Parking Column
- Insert-type reader for mag stripe cards and/or smartcards
- Motorised reader for mag stripe cards and smartcards
- Manufactured in accordance with ISO 9001 standards

Technical Specifications

Supported data carriers	SKIDATA™ TK400
Ticket format	ISO-compliant; 54 mm x 86 mm
Ticket issuing speed	up to 700 tickets/hour
Dimensions in mm	290 mm x 200 mm x 210 mm
Weight	4,1 kg
Operating temperature	10 °C – 40 °C, ambient
Power supply	24 VDC
Power consumption	100 W
Interface	RS 485 (Arcnet protocol); 9-pin D-Sub connector
Standard compliance	R&TTE Directive 1999/5/EC
Carrier frequency for processing of contactless media	122,88 kHz; 13,56 MHz

Coding unit

