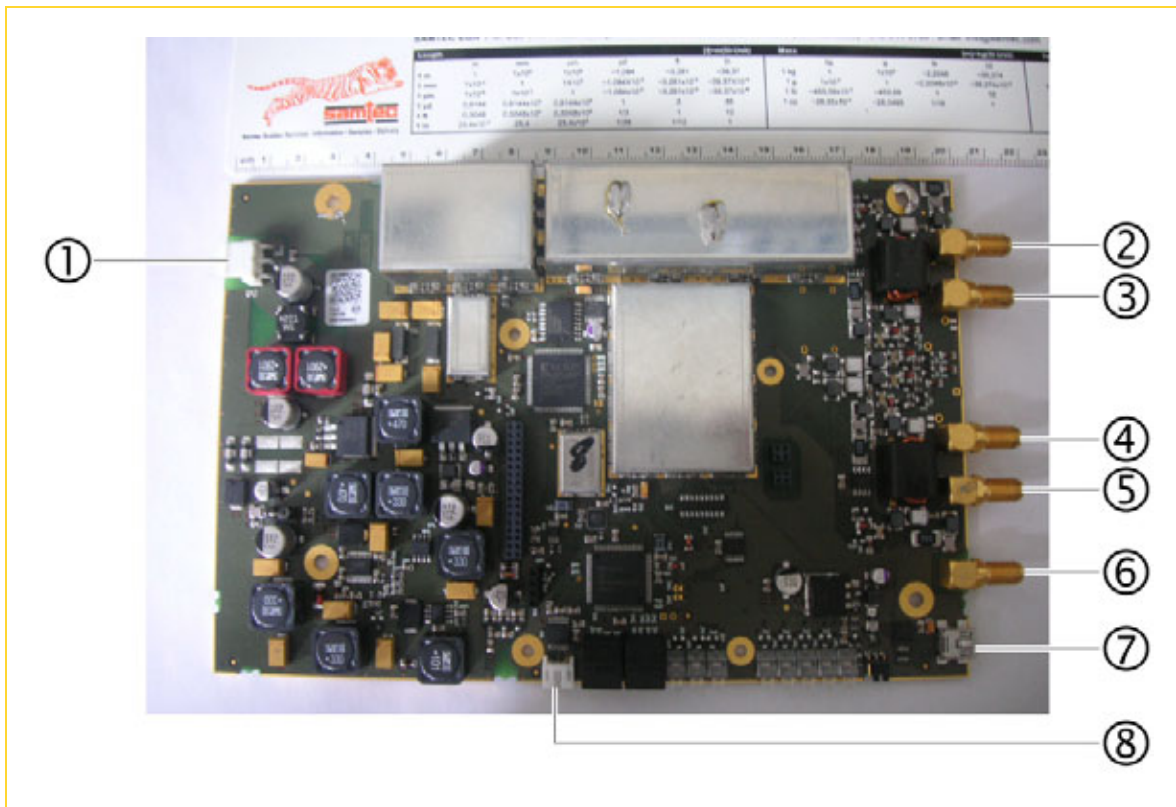


## 2 sd787

### 2.1 Front view

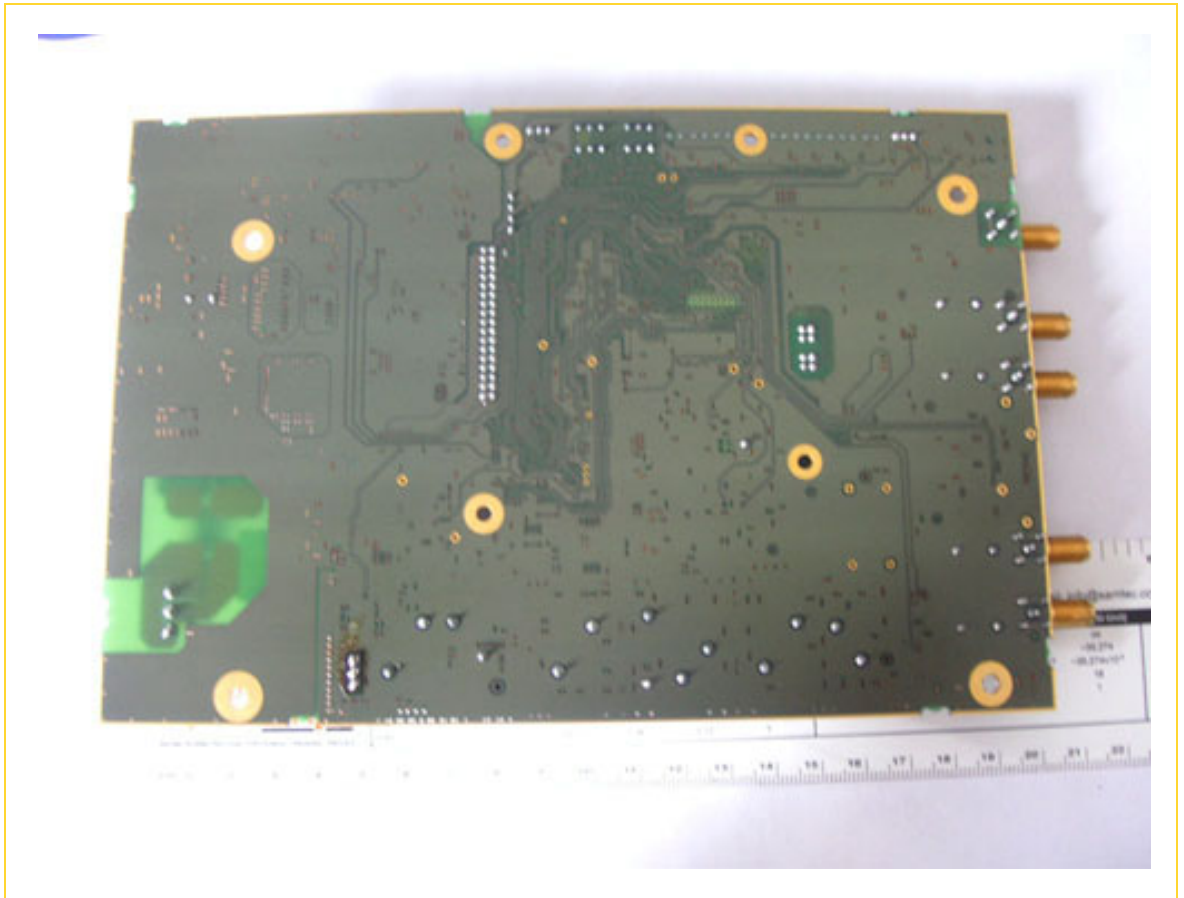
Fig. 1: Front view - sd787



- |                                       |                                      |
|---------------------------------------|--------------------------------------|
| ① +24 V DC Power supply               | ⑤ Open.Gate back antenna (13,56 MHz) |
| ② Standard rear antenna (13,56 MHz)   | ⑥ Midrange antenna sd697 (122 kHz)   |
| ③ Standard front antenna (13,56 MHz)  | ⑦ USB                                |
| ④ Open.Gate front antenna (13,56 MHz) | ⑧ RS 232 Interface                   |

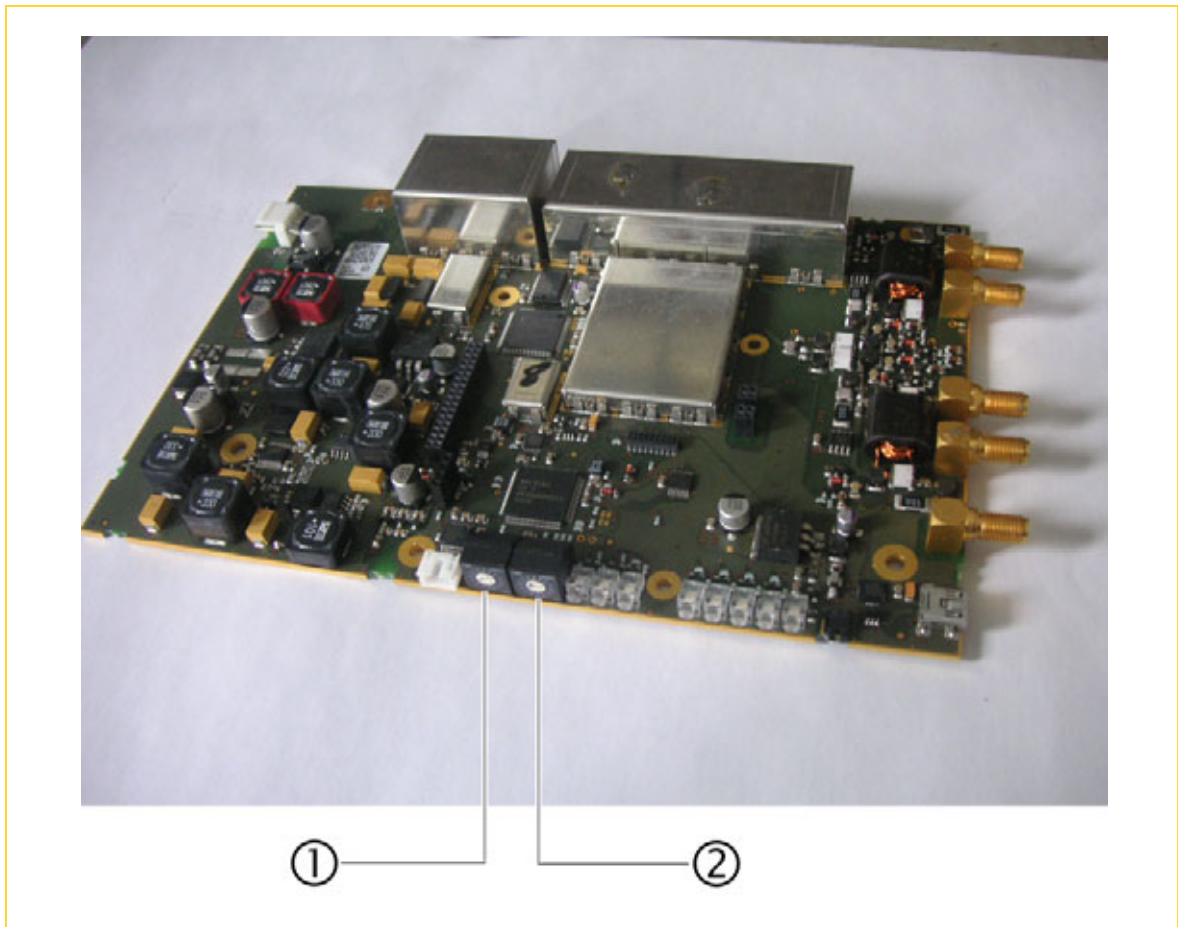
## 2.2 Rear view

Fig. 2: Rear view - sd787



## 2.3 3D view

Fig. 3: 3D view - sd787



① Power adjustment

② Operating mode